

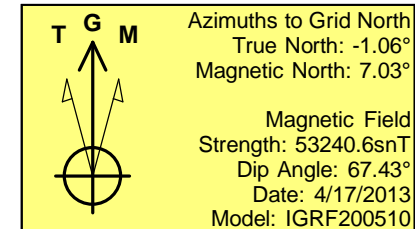
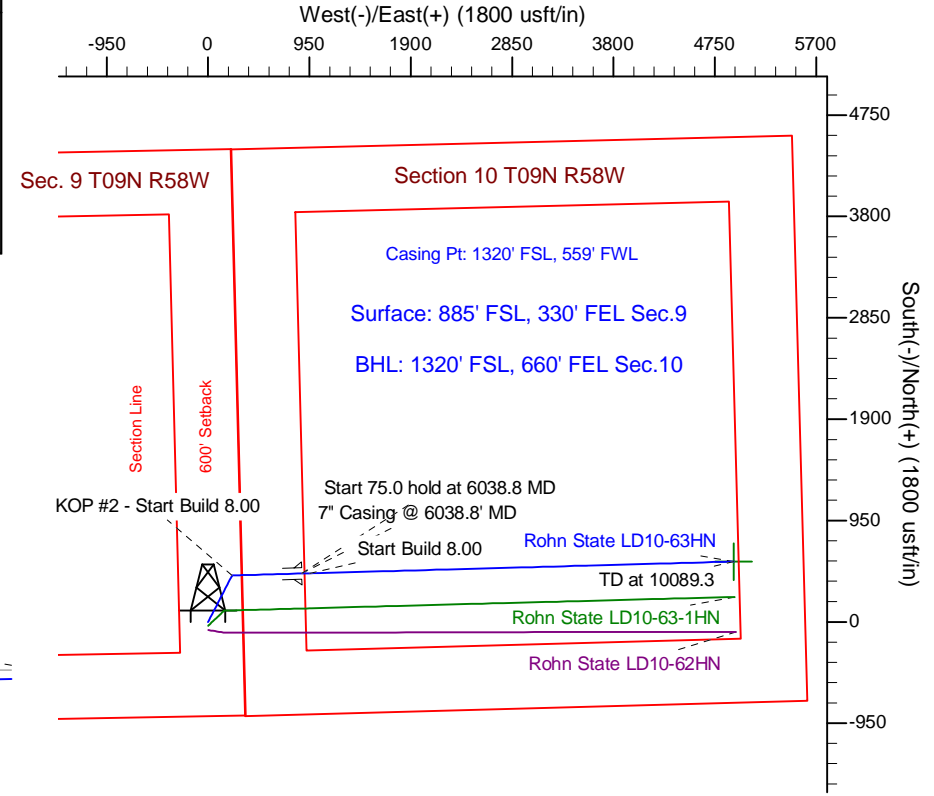
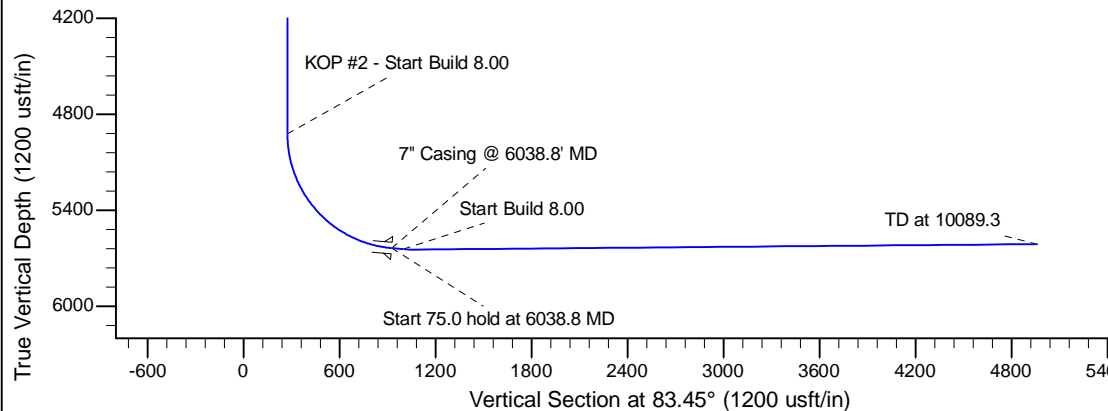
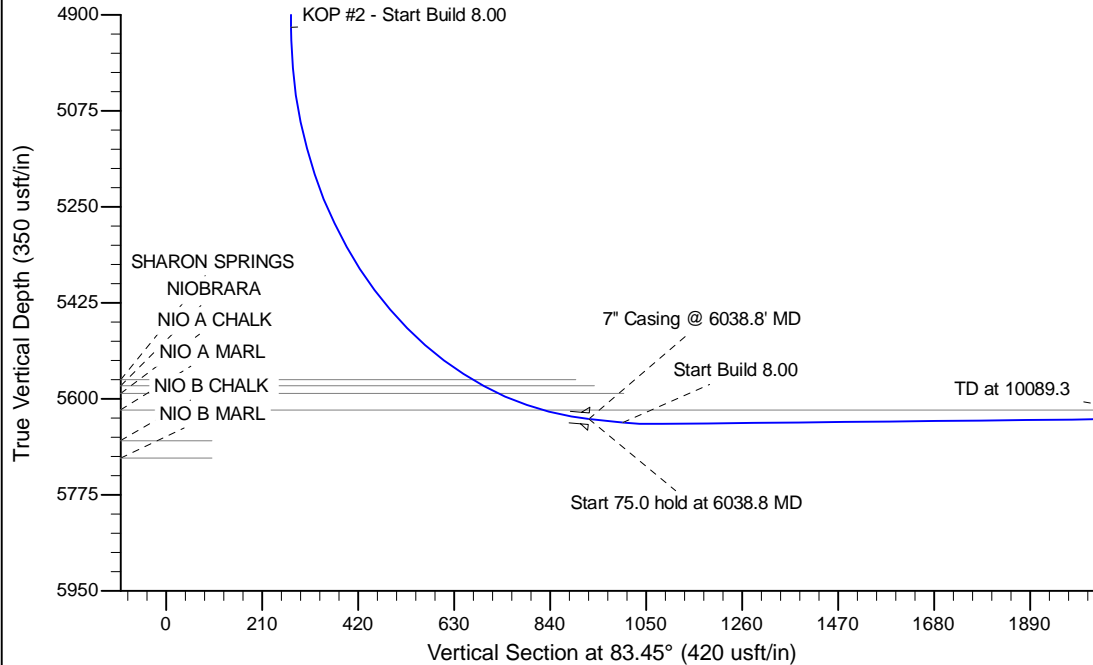
Project: Wattenberg Field  
Site: LD (Sec.9-T09N-R58W) Weld County, CO  
Well: Rohn State LD10-63HN  
Wellbore: Original Drilling  
Design: APD - Rev 0

# Northern Region Drilling

Geodetic System: US State Plane 1983  
Datum: North American Datum 1983  
Ellipsoid: GRS 1980  
Zone: Colorado Northern Zone  
System Datum: Mean Sea Level

## SECTION DETAILS

Sec	MD	Inc	Azi	TVD	+N/-S	+E/-W	Dleg	TFace	VSec	Target
1	0.0	0.00	0.00	0.0	0.0	0.0	0.00	0.00	0.0	
2	1200.0	0.00	0.00	1200.0	0.0	0.0	0.00	0.00	0.0	
3	1901.5	14.03	27.35	1894.5	75.9	39.3	2.00	27.35	47.7	
4	3216.8	14.03	27.35	3170.5	359.1	185.7	0.00	0.00	225.5	
5	3918.2	0.00	0.00	3865.0	435.0	225.0	2.00	180.00	273.1	
6	4976.3	0.00	0.00	4923.1	435.0	225.0	0.00	0.00	273.1	
7	6038.8	85.00	88.41	5636.6	453.1	878.5	8.00	88.41	924.4	
8	6113.8	85.00	88.41	5643.1	455.2	953.2	0.00	0.00	998.9	
9	6182.5	90.50	88.41	5645.8	457.1	1021.9	8.00	0.00	1067.3	
10	10089.3	90.50	88.41	5611.7	565.3	4926.9	0.00	0.00	4959.3	Rohn State LD10-63HN BHL 1320' FSL, 660' FEL



WELL DETAILS: Rohn State LD10-63HN					
Ground Level: 4717.0		Latitude		Longitude	
0.0	0.0	1524276.94	3454002.30	40° 45' 39.636 N	103° 51' 39.852 W
Plan: APD - Rev 0 (Rohn State LD10-63HN/Original Drilling)					
Created By: Shailey Jewell		Date: 16:41, April 18 2013			
Checked: _____		Date: _____			
Reviewed: _____		Date: _____			
Approved: _____		Date: _____			

# **Northern Region Drilling**

**Wattenberg Field**

**LD (09N-58W)**

**Rohn State LD10-63HN**

**Original Drilling**

**Plan: APD - Rev 0**

## **Standard Planning Report**

**18 April, 2013**

# Noble Energy Inc

## Planning Report

<b>Database:</b>	EDM Production	<b>Local Co-ordinate Reference:</b>	Well Rohn State LD10-63HN
<b>Company:</b>	Northern Region Drilling	<b>TVD Reference:</b>	WELL @ 4747.0usft (Original Well Elev)
<b>Project:</b>	Wattenberg Field	<b>MD Reference:</b>	WELL @ 4747.0usft (Original Well Elev)
<b>Site:</b>	LD (09N-58W)	<b>North Reference:</b>	Grid
<b>Well:</b>	Rohn State LD10-63HN	<b>Survey Calculation Method:</b>	Minimum Curvature
<b>Wellbore:</b>	Original Drilling		
<b>Design:</b>	APD - Rev 0		

<b>Project</b>	Wattenberg Field, Weld County CO		
<b>Map System:</b>	US State Plane 1983	<b>System Datum:</b>	Mean Sea Level
<b>Geo Datum:</b>	North American Datum 1983		
<b>Map Zone:</b>	Colorado Northern Zone		Using geodetic scale factor

<b>Site</b>	LD (09N-58W)		
<b>Site Position:</b>		<b>Northing:</b>	1,523,557.18 usft
<b>From:</b>	Lat/Long	<b>Easting:</b>	3,449,341.23 usft
<b>Position Uncertainty:</b>	0.0 usft	<b>Slot Radius:</b>	13-3/16 "
		<b>Latitude:</b>	40° 45' 33.372 N
		<b>Longitude:</b>	103° 52' 40.584 W
		<b>Grid Convergence:</b>	1.05 °

<b>Well</b>	Rohn State LD10-63HN		
<b>Well Position</b>	<b>+N/-S</b>	719.8 usft	<b>Northing:</b>
	<b>+E/-W</b>	4,661.1 usft	<b>Easting:</b>
<b>Position Uncertainty</b>	0.0 usft		<b>Wellhead Elevation:</b>
			<b>Latitude:</b>
			<b>Longitude:</b>
			<b>Ground Level:</b>

<b>Wellbore</b>	Original Drilling				
<b>Magnetics</b>	<b>Model Name</b>	<b>Sample Date</b>	<b>Declination (°)</b>	<b>Dip Angle (°)</b>	<b>Field Strength (nT)</b>
	IGRF200510	4/17/2013	8.09	67.43	53,241

<b>Design</b>	APD - Rev 0			
<b>Audit Notes:</b>				
<b>Version:</b>	<b>Phase:</b>	PROTOTYPE	<b>Tie On Depth:</b>	0.0
<b>Vertical Section:</b>	<b>Depth From (TVD) (usft)</b>	<b>+N/-S (usft)</b>	<b>+E/-W (usft)</b>	<b>Direction (°)</b>
	0.0	0.0	0.0	83.45

<b>Plan Sections</b>										
Measured Depth (usft)	Inclination (°)	Azimuth (°)	Vertical Depth (usft)	+N/-S (usft)	+E/-W (usft)	Dogleg Rate (°/100usft)	Build Rate (°/100usft)	Turn Rate (°/100usft)	TFO (°)	Target
0.0	0.00	0.00	0.0	0.0	0.0	0.00	0.00	0.00	0.00	
1,200.0	0.00	0.00	1,200.0	0.0	0.0	0.00	0.00	0.00	0.00	
1,901.5	14.03	27.35	1,894.5	75.9	39.3	2.00	2.00	0.00	27.35	
3,216.8	14.03	27.35	3,170.5	359.1	185.7	0.00	0.00	0.00	0.00	
3,918.2	0.00	0.00	3,865.0	435.0	225.0	2.00	-2.00	0.00	180.00	
4,976.3	0.00	0.00	4,923.1	435.0	225.0	0.00	0.00	0.00	0.00	
6,038.8	85.00	88.41	5,636.6	453.1	878.5	8.00	8.00	0.00	88.41	
6,113.8	85.00	88.41	5,643.1	455.2	953.2	0.00	0.00	0.00	0.00	
6,182.5	90.50	88.41	5,645.8	457.1	1,021.9	8.00	8.00	0.00	0.00	
10,089.3	90.50	88.41	5,611.7	565.3	4,926.9	0.00	0.00	0.00	0.00	Rohn State LD10-63H-

# Noble Energy Inc

## Planning Report

<b>Database:</b>	EDM Production	<b>Local Co-ordinate Reference:</b>	Well Rohn State LD10-63HN
<b>Company:</b>	Northern Region Drilling	<b>TVD Reference:</b>	WELL @ 4747.0usft (Original Well Elev)
<b>Project:</b>	Wattenberg Field	<b>MD Reference:</b>	WELL @ 4747.0usft (Original Well Elev)
<b>Site:</b>	LD (09N-58W)	<b>North Reference:</b>	Grid
<b>Well:</b>	Rohn State LD10-63HN	<b>Survey Calculation Method:</b>	Minimum Curvature
<b>Wellbore:</b>	Original Drilling		
<b>Design:</b>	APD - Rev 0		

Planned Survey									
Measured Depth (usft)	Inclination (°)	Azimuth (°)	Vertical Depth (usft)	+N/-S (usft)	+E/-W (usft)	Vertical Section (usft)	Dogleg Rate (°/100usft)	Build Rate (°/100usft)	Turn Rate (°/100usft)
0.0	0.00	0.00	0.0	0.0	0.0	0.0	0.00	0.00	0.00
50.0	0.00	0.00	50.0	0.0	0.0	0.0	0.00	0.00	0.00
100.0	0.00	0.00	100.0	0.0	0.0	0.0	0.00	0.00	0.00
150.0	0.00	0.00	150.0	0.0	0.0	0.0	0.00	0.00	0.00
200.0	0.00	0.00	200.0	0.0	0.0	0.0	0.00	0.00	0.00
250.0	0.00	0.00	250.0	0.0	0.0	0.0	0.00	0.00	0.00
300.0	0.00	0.00	300.0	0.0	0.0	0.0	0.00	0.00	0.00
350.0	0.00	0.00	350.0	0.0	0.0	0.0	0.00	0.00	0.00
400.0	0.00	0.00	400.0	0.0	0.0	0.0	0.00	0.00	0.00
450.0	0.00	0.00	450.0	0.0	0.0	0.0	0.00	0.00	0.00
500.0	0.00	0.00	500.0	0.0	0.0	0.0	0.00	0.00	0.00
550.0	0.00	0.00	550.0	0.0	0.0	0.0	0.00	0.00	0.00
600.0	0.00	0.00	600.0	0.0	0.0	0.0	0.00	0.00	0.00
650.0	0.00	0.00	650.0	0.0	0.0	0.0	0.00	0.00	0.00
700.0	0.00	0.00	700.0	0.0	0.0	0.0	0.00	0.00	0.00
750.0	0.00	0.00	750.0	0.0	0.0	0.0	0.00	0.00	0.00
800.0	0.00	0.00	800.0	0.0	0.0	0.0	0.00	0.00	0.00
850.0	0.00	0.00	850.0	0.0	0.0	0.0	0.00	0.00	0.00
900.0	0.00	0.00	900.0	0.0	0.0	0.0	0.00	0.00	0.00
950.0	0.00	0.00	950.0	0.0	0.0	0.0	0.00	0.00	0.00
1,000.0	0.00	0.00	1,000.0	0.0	0.0	0.0	0.00	0.00	0.00
1,050.0	0.00	0.00	1,050.0	0.0	0.0	0.0	0.00	0.00	0.00
1,100.0	0.00	0.00	1,100.0	0.0	0.0	0.0	0.00	0.00	0.00
1,150.0	0.00	0.00	1,150.0	0.0	0.0	0.0	0.00	0.00	0.00
1,200.0	0.00	0.00	1,200.0	0.0	0.0	0.0	0.00	0.00	0.00
KOP - Start Build 2.00									
1,250.0	1.00	27.35	1,250.0	0.4	0.2	0.2	2.00	2.00	0.00
1,300.0	2.00	27.35	1,300.0	1.6	0.8	1.0	2.00	2.00	0.00
1,350.0	3.00	27.35	1,349.9	3.5	1.8	2.2	2.00	2.00	0.00
1,400.0	4.00	27.35	1,399.8	6.2	3.2	3.9	2.00	2.00	0.00
1,450.0	5.00	27.35	1,449.7	9.7	5.0	6.1	2.00	2.00	0.00
1,500.0	6.00	27.35	1,499.5	13.9	7.2	8.8	2.00	2.00	0.00
1,550.0	7.00	27.35	1,549.1	19.0	9.8	11.9	2.00	2.00	0.00
1,600.0	8.00	27.35	1,598.7	24.8	12.8	15.5	2.00	2.00	0.00
1,650.0	9.00	27.35	1,648.2	31.3	16.2	19.7	2.00	2.00	0.00
1,700.0	10.00	27.35	1,697.5	38.7	20.0	24.3	2.00	2.00	0.00
1,750.0	11.00	27.35	1,746.6	46.8	24.2	29.4	2.00	2.00	0.00
1,800.0	12.00	27.35	1,795.6	55.6	28.8	34.9	2.00	2.00	0.00
1,850.0	13.00	27.35	1,844.4	65.2	33.7	40.9	2.00	2.00	0.00
1,900.0	14.00	27.35	1,893.1	75.6	39.1	47.5	2.00	2.00	0.00
1,901.5	14.03	27.35	1,894.5	75.9	39.3	47.7	2.00	2.00	0.00
1,950.0	14.03	27.35	1,941.6	86.3	44.7	54.2	0.00	0.00	0.00
2,000.0	14.03	27.35	1,990.1	97.1	50.2	61.0	0.00	0.00	0.00
2,050.0	14.03	27.35	2,038.6	107.9	55.8	67.7	0.00	0.00	0.00
2,100.0	14.03	27.35	2,087.1	118.6	61.4	74.5	0.00	0.00	0.00
2,150.0	14.03	27.35	2,135.6	129.4	66.9	81.3	0.00	0.00	0.00
2,200.0	14.03	27.35	2,184.1	140.2	72.5	88.0	0.00	0.00	0.00
2,250.0	14.03	27.35	2,232.6	150.9	78.1	94.8	0.00	0.00	0.00
2,300.0	14.03	27.35	2,281.1	161.7	83.6	101.5	0.00	0.00	0.00
2,350.0	14.03	27.35	2,329.6	172.5	89.2	108.3	0.00	0.00	0.00
2,388.5	14.03	27.35	2,367.0	180.8	93.5	113.5	0.00	0.00	0.00
PIERRE									
2,400.0	14.03	27.35	2,378.1	183.2	94.8	115.0	0.00	0.00	0.00
2,450.0	14.03	27.35	2,426.7	194.0	100.3	121.8	0.00	0.00	0.00

# Noble Energy Inc

## Planning Report

<b>Database:</b>	EDM Production	<b>Local Co-ordinate Reference:</b>	Well Rohn State LD10-63HN
<b>Company:</b>	Northern Region Drilling	<b>TVD Reference:</b>	WELL @ 4747.0usft (Original Well Elev)
<b>Project:</b>	Wattenberg Field	<b>MD Reference:</b>	WELL @ 4747.0usft (Original Well Elev)
<b>Site:</b>	LD (09N-58W)	<b>North Reference:</b>	Grid
<b>Well:</b>	Rohn State LD10-63HN	<b>Survey Calculation Method:</b>	Minimum Curvature
<b>Wellbore:</b>	Original Drilling		
<b>Design:</b>	APD - Rev 0		

Planned Survey									
Measured Depth (usft)	Inclination (°)	Azimuth (°)	Vertical Depth (usft)	+N/-S (usft)	+E/-W (usft)	Vertical Section (usft)	Dogleg Rate (°/100usft)	Build Rate (°/100usft)	Turn Rate (°/100usft)
2,500.0	14.03	27.35	2,475.2	204.8	105.9	128.6	0.00	0.00	0.00
2,550.0	14.03	27.35	2,523.7	215.5	111.5	135.3	0.00	0.00	0.00
2,600.0	14.03	27.35	2,572.2	226.3	117.1	142.1	0.00	0.00	0.00
2,650.0	14.03	27.35	2,620.7	237.1	122.6	148.8	0.00	0.00	0.00
2,700.0	14.03	27.35	2,669.2	247.8	128.2	155.6	0.00	0.00	0.00
2,750.0	14.03	27.35	2,717.7	258.6	133.8	162.4	0.00	0.00	0.00
2,800.0	14.03	27.35	2,766.2	269.4	139.3	169.1	0.00	0.00	0.00
2,850.0	14.03	27.35	2,814.7	280.1	144.9	175.9	0.00	0.00	0.00
2,900.0	14.03	27.35	2,863.2	290.9	150.5	182.6	0.00	0.00	0.00
2,950.0	14.03	27.35	2,911.7	301.7	156.0	189.4	0.00	0.00	0.00
3,000.0	14.03	27.35	2,960.2	312.4	161.6	196.2	0.00	0.00	0.00
3,050.0	14.03	27.35	3,008.8	323.2	167.2	202.9	0.00	0.00	0.00
3,100.0	14.03	27.35	3,057.3	334.0	172.7	209.7	0.00	0.00	0.00
3,150.0	14.03	27.35	3,105.8	344.7	178.3	216.4	0.00	0.00	0.00
3,200.0	14.03	27.35	3,154.3	355.5	183.9	223.2	0.00	0.00	0.00
3,216.8	14.03	27.35	3,170.6	359.1	185.7	225.5	0.00	0.00	0.00
<b>Start Drop -2.00</b>									
3,250.0	13.36	27.35	3,202.8	366.1	189.4	229.9	2.00	-2.00	0.00
3,287.1	12.62	27.35	3,239.0	373.5	193.2	234.5	2.00	-2.00	0.00
<b>PARKMAN</b>									
3,300.0	12.36	27.35	3,251.6	376.0	194.5	236.1	2.00	-2.00	0.00
3,350.0	11.36	27.35	3,300.5	385.1	199.2	241.8	2.00	-2.00	0.00
3,400.0	10.36	27.35	3,349.6	393.5	203.5	247.1	2.00	-2.00	0.00
3,450.0	9.36	27.35	3,398.9	401.1	207.5	251.8	2.00	-2.00	0.00
3,500.0	8.36	27.35	3,448.3	407.9	211.0	256.1	2.00	-2.00	0.00
3,550.0	7.36	27.35	3,497.8	414.0	214.1	259.9	2.00	-2.00	0.00
3,600.0	6.36	27.35	3,547.4	419.3	216.9	263.3	2.00	-2.00	0.00
3,650.0	5.36	27.35	3,597.2	423.9	219.2	266.1	2.00	-2.00	0.00
3,700.0	4.36	27.35	3,647.0	427.6	221.2	268.5	2.00	-2.00	0.00
3,750.0	3.36	27.35	3,696.9	430.6	222.7	270.4	2.00	-2.00	0.00
3,800.0	2.36	27.35	3,746.8	432.8	223.9	271.8	2.00	-2.00	0.00
3,850.0	1.36	27.35	3,796.8	434.3	224.6	272.7	2.00	-2.00	0.00
3,900.0	0.36	27.35	3,846.8	434.9	225.0	273.1	2.00	-2.00	0.00
3,918.2	0.00	0.00	3,865.0	435.0	225.0	273.1	2.00	-2.00	0.00
3,919.2	0.00	0.00	3,866.0	435.0	225.0	273.1	0.00	0.00	0.00
<b>SUSSEX</b>									
3,950.0	0.00	0.00	3,896.8	435.0	225.0	273.1	0.00	0.00	0.00
4,000.0	0.00	0.00	3,946.8	435.0	225.0	273.1	0.00	0.00	0.00
4,050.0	0.00	0.00	3,996.8	435.0	225.0	273.1	0.00	0.00	0.00
4,100.0	0.00	0.00	4,046.8	435.0	225.0	273.1	0.00	0.00	0.00
4,150.0	0.00	0.00	4,096.8	435.0	225.0	273.1	0.00	0.00	0.00
4,200.0	0.00	0.00	4,146.8	435.0	225.0	273.1	0.00	0.00	0.00
4,250.0	0.00	0.00	4,196.8	435.0	225.0	273.1	0.00	0.00	0.00
4,300.0	0.00	0.00	4,246.8	435.0	225.0	273.1	0.00	0.00	0.00
4,350.0	0.00	0.00	4,296.8	435.0	225.0	273.1	0.00	0.00	0.00
4,356.2	0.00	0.00	4,303.0	435.0	225.0	273.1	0.00	0.00	0.00
<b>SHANNON</b>									
4,400.0	0.00	0.00	4,346.8	435.0	225.0	273.1	0.00	0.00	0.00
4,450.0	0.00	0.00	4,396.8	435.0	225.0	273.1	0.00	0.00	0.00
4,500.0	0.00	0.00	4,446.8	435.0	225.0	273.1	0.00	0.00	0.00
4,550.0	0.00	0.00	4,496.8	435.0	225.0	273.1	0.00	0.00	0.00
4,600.0	0.00	0.00	4,546.8	435.0	225.0	273.1	0.00	0.00	0.00
4,650.0	0.00	0.00	4,596.8	435.0	225.0	273.1	0.00	0.00	0.00

# Noble Energy Inc

## Planning Report

<b>Database:</b>	EDM Production	<b>Local Co-ordinate Reference:</b>	Well Rohn State LD10-63HN
<b>Company:</b>	Northern Region Drilling	<b>TVD Reference:</b>	WELL @ 4747.0usft (Original Well Elev)
<b>Project:</b>	Wattenberg Field	<b>MD Reference:</b>	WELL @ 4747.0usft (Original Well Elev)
<b>Site:</b>	LD (09N-58W)	<b>North Reference:</b>	Grid
<b>Well:</b>	Rohn State LD10-63HN	<b>Survey Calculation Method:</b>	Minimum Curvature
<b>Wellbore:</b>	Original Drilling		
<b>Design:</b>	APD - Rev 0		

Planned Survey									
Measured Depth (usft)	Inclination (°)	Azimuth (°)	Vertical Depth (usft)	+N/-S (usft)	+E/-W (usft)	Vertical Section (usft)	Dogleg Rate (°/100usft)	Build Rate (°/100usft)	Turn Rate (°/100usft)
4,700.0	0.00	0.00	4,646.8	435.0	225.0	273.1	0.00	0.00	0.00
4,750.0	0.00	0.00	4,696.8	435.0	225.0	273.1	0.00	0.00	0.00
4,800.0	0.00	0.00	4,746.8	435.0	225.0	273.1	0.00	0.00	0.00
4,850.0	0.00	0.00	4,796.8	435.0	225.0	273.1	0.00	0.00	0.00
4,900.0	0.00	0.00	4,846.8	435.0	225.0	273.1	0.00	0.00	0.00
4,922.2	0.00	0.00	4,869.0	435.0	225.0	273.1	0.00	0.00	0.00
TEEPEE BUTTES									
4,950.0	0.00	0.00	4,896.8	435.0	225.0	273.1	0.00	0.00	0.00
4,976.3	0.00	0.00	4,923.1	435.0	225.0	273.1	0.00	0.00	0.00
KOP #2 - Start Build 8.00									
5,000.0	1.90	88.41	4,946.8	435.0	225.4	273.5	8.00	8.00	0.00
5,050.0	5.90	88.41	4,996.7	435.1	228.8	276.9	8.00	8.00	0.00
5,100.0	9.90	88.41	5,046.2	435.3	235.7	283.7	8.00	8.00	0.00
5,150.0	13.90	88.41	5,095.1	435.6	246.0	294.0	8.00	8.00	0.00
5,200.0	17.90	88.41	5,143.2	436.0	259.6	307.6	8.00	8.00	0.00
5,250.0	21.90	88.41	5,190.2	436.4	276.6	324.6	8.00	8.00	0.00
5,300.0	25.90	88.41	5,235.9	437.0	296.9	344.8	8.00	8.00	0.00
5,350.0	29.90	88.41	5,280.1	437.6	320.3	368.1	8.00	8.00	0.00
5,400.0	33.90	88.41	5,322.5	438.4	346.7	394.4	8.00	8.00	0.00
5,450.0	37.90	88.41	5,363.0	439.2	376.0	423.6	8.00	8.00	0.00
5,500.0	41.90	88.41	5,401.4	440.1	408.0	455.5	8.00	8.00	0.00
5,550.0	45.90	88.41	5,437.4	441.0	442.7	490.1	8.00	8.00	0.00
5,600.0	49.90	88.41	5,470.9	442.1	479.7	527.0	8.00	8.00	0.00
5,650.0	53.90	88.41	5,501.7	443.1	519.1	566.2	8.00	8.00	0.00
5,700.0	57.90	88.41	5,529.8	444.3	560.4	607.4	8.00	8.00	0.00
5,750.0	61.90	88.41	5,554.8	445.5	603.7	650.5	8.00	8.00	0.00
5,772.2	63.67	88.41	5,565.0	446.0	623.4	670.2	8.00	8.00	0.00
SHARON SPRINGS									
5,798.0	65.73	88.41	5,576.0	446.7	646.7	693.4	8.00	8.00	0.00
NIOBRARA									
5,800.0	65.90	88.41	5,576.8	446.7	648.5	695.2	8.00	8.00	0.00
5,834.1	68.62	88.41	5,590.0	447.6	679.9	726.5	8.00	8.00	0.00
NIO A CHALK									
5,850.0	69.90	88.41	5,595.6	448.0	694.8	741.4	8.00	8.00	0.00
5,900.0	73.90	88.41	5,611.2	449.3	742.3	788.7	8.00	8.00	0.00
5,934.7	76.67	88.41	5,620.0	450.3	775.9	822.2	8.00	8.00	0.00
NIO A MARL									
5,950.0	77.90	88.41	5,623.4	450.7	790.8	837.0	8.00	8.00	0.00
6,000.0	81.90	88.41	5,632.1	452.0	840.0	886.1	8.00	8.00	0.00
6,038.8	85.00	88.41	5,636.6	453.1	878.5	924.5	8.00	8.00	0.00
Start 75.0 hold at 6038.8 MD - 7" Casing @ 6038.8' MD									
6,050.0	85.00	88.41	5,637.5	453.4	889.7	935.6	0.00	0.00	0.00
6,100.0	85.00	88.41	5,641.9	454.8	939.5	985.2	0.00	0.00	0.00
6,113.8	85.00	88.41	5,643.1	455.2	953.2	998.9	0.00	0.00	0.00
Start Build 8.00									
6,150.0	87.90	88.41	5,645.3	456.2	989.3	1,034.9	8.00	8.00	0.00
6,182.5	90.50	88.41	5,645.8	457.1	1,021.9	1,067.3	8.00	8.00	0.00
6,200.0	90.50	88.41	5,645.6	457.6	1,039.3	1,084.7	0.00	0.00	0.00
6,250.0	90.50	88.41	5,645.2	458.9	1,089.3	1,134.5	0.00	0.00	0.00
6,300.0	90.50	88.41	5,644.8	460.3	1,139.3	1,184.3	0.00	0.00	0.00
6,350.0	90.50	88.41	5,644.3	461.7	1,189.2	1,234.1	0.00	0.00	0.00
6,400.0	90.50	88.41	5,643.9	463.1	1,239.2	1,283.9	0.00	0.00	0.00
6,450.0	90.50	88.41	5,643.5	464.5	1,289.2	1,333.7	0.00	0.00	0.00

# Noble Energy Inc

## Planning Report

<b>Database:</b>	EDM Production	<b>Local Co-ordinate Reference:</b>	Well Rohn State LD10-63HN
<b>Company:</b>	Northern Region Drilling	<b>TVD Reference:</b>	WELL @ 4747.0usft (Original Well Elev)
<b>Project:</b>	Wattenberg Field	<b>MD Reference:</b>	WELL @ 4747.0usft (Original Well Elev)
<b>Site:</b>	LD (09N-58W)	<b>North Reference:</b>	Grid
<b>Well:</b>	Rohn State LD10-63HN	<b>Survey Calculation Method:</b>	Minimum Curvature
<b>Wellbore:</b>	Original Drilling		
<b>Design:</b>	APD - Rev 0		

Planned Survey									
Measured Depth (usft)	Inclination (°)	Azimuth (°)	Vertical Depth (usft)	+N/-S (usft)	+E/-W (usft)	Vertical Section (usft)	Dogleg Rate (°/100usft)	Build Rate (°/100usft)	Turn Rate (°/100usft)
6,500.0	90.50	88.41	5,643.0	465.9	1,339.2	1,383.6	0.00	0.00	0.00
6,550.0	90.50	88.41	5,642.6	467.3	1,389.2	1,433.4	0.00	0.00	0.00
6,600.0	90.50	88.41	5,642.1	468.6	1,439.1	1,483.2	0.00	0.00	0.00
6,650.0	90.50	88.41	5,641.7	470.0	1,489.1	1,533.0	0.00	0.00	0.00
6,700.0	90.50	88.41	5,641.3	471.4	1,539.1	1,582.8	0.00	0.00	0.00
6,750.0	90.50	88.41	5,640.8	472.8	1,589.1	1,632.6	0.00	0.00	0.00
6,800.0	90.50	88.41	5,640.4	474.2	1,639.1	1,682.4	0.00	0.00	0.00
6,850.0	90.50	88.41	5,640.0	475.6	1,689.0	1,732.2	0.00	0.00	0.00
6,900.0	90.50	88.41	5,639.5	477.0	1,739.0	1,782.0	0.00	0.00	0.00
6,950.0	90.50	88.41	5,639.1	478.3	1,789.0	1,831.9	0.00	0.00	0.00
7,000.0	90.50	88.41	5,638.7	479.7	1,839.0	1,881.7	0.00	0.00	0.00
7,050.0	90.50	88.41	5,638.2	481.1	1,888.9	1,931.5	0.00	0.00	0.00
7,100.0	90.50	88.41	5,637.8	482.5	1,938.9	1,981.3	0.00	0.00	0.00
7,150.0	90.50	88.41	5,637.3	483.9	1,988.9	2,031.1	0.00	0.00	0.00
7,200.0	90.50	88.41	5,636.9	485.3	2,038.9	2,080.9	0.00	0.00	0.00
7,250.0	90.50	88.41	5,636.5	486.6	2,088.9	2,130.7	0.00	0.00	0.00
7,300.0	90.50	88.41	5,636.0	488.0	2,138.8	2,180.5	0.00	0.00	0.00
7,350.0	90.50	88.41	5,635.6	489.4	2,188.8	2,230.3	0.00	0.00	0.00
7,400.0	90.50	88.41	5,635.2	490.8	2,238.8	2,280.2	0.00	0.00	0.00
7,450.0	90.50	88.41	5,634.7	492.2	2,288.8	2,330.0	0.00	0.00	0.00
7,500.0	90.50	88.41	5,634.3	493.6	2,338.8	2,379.8	0.00	0.00	0.00
7,550.0	90.50	88.41	5,633.9	495.0	2,388.7	2,429.6	0.00	0.00	0.00
7,600.0	90.50	88.41	5,633.4	496.3	2,438.7	2,479.4	0.00	0.00	0.00
7,650.0	90.50	88.41	5,633.0	497.7	2,488.7	2,529.2	0.00	0.00	0.00
7,700.0	90.50	88.41	5,632.6	499.1	2,538.7	2,579.0	0.00	0.00	0.00
7,750.0	90.50	88.41	5,632.1	500.5	2,588.7	2,628.8	0.00	0.00	0.00
7,800.0	90.50	88.41	5,631.7	501.9	2,638.6	2,678.6	0.00	0.00	0.00
7,850.0	90.50	88.41	5,631.2	503.3	2,688.6	2,728.5	0.00	0.00	0.00
7,900.0	90.50	88.41	5,630.8	504.7	2,738.6	2,778.3	0.00	0.00	0.00
7,950.0	90.50	88.41	5,630.4	506.0	2,788.6	2,828.1	0.00	0.00	0.00
8,000.0	90.50	88.41	5,629.9	507.4	2,838.5	2,877.9	0.00	0.00	0.00
8,050.0	90.50	88.41	5,629.5	508.8	2,888.5	2,927.7	0.00	0.00	0.00
8,100.0	90.50	88.41	5,629.1	510.2	2,938.5	2,977.5	0.00	0.00	0.00
8,150.0	90.50	88.41	5,628.6	511.6	2,988.5	3,027.3	0.00	0.00	0.00
8,200.0	90.50	88.41	5,628.2	513.0	3,038.5	3,077.1	0.00	0.00	0.00
8,250.0	90.50	88.41	5,627.8	514.3	3,088.4	3,126.9	0.00	0.00	0.00
8,300.0	90.50	88.41	5,627.3	515.7	3,138.4	3,176.8	0.00	0.00	0.00
8,350.0	90.50	88.41	5,626.9	517.1	3,188.4	3,226.6	0.00	0.00	0.00
8,400.0	90.50	88.41	5,626.4	518.5	3,238.4	3,276.4	0.00	0.00	0.00
8,450.0	90.50	88.41	5,626.0	519.9	3,288.4	3,326.2	0.00	0.00	0.00
8,500.0	90.50	88.41	5,625.6	521.3	3,338.3	3,376.0	0.00	0.00	0.00
8,550.0	90.50	88.41	5,625.1	522.7	3,388.3	3,425.8	0.00	0.00	0.00
8,600.0	90.50	88.41	5,624.7	524.0	3,438.3	3,475.6	0.00	0.00	0.00
8,650.0	90.50	88.41	5,624.3	525.4	3,488.3	3,525.4	0.00	0.00	0.00
8,700.0	90.50	88.41	5,623.8	526.8	3,538.3	3,575.2	0.00	0.00	0.00
8,750.0	90.50	88.41	5,623.4	528.2	3,588.2	3,625.0	0.00	0.00	0.00
8,800.0	90.50	88.41	5,623.0	529.6	3,638.2	3,674.9	0.00	0.00	0.00
8,850.0	90.50	88.41	5,622.5	531.0	3,688.2	3,724.7	0.00	0.00	0.00
8,900.0	90.50	88.41	5,622.1	532.3	3,738.2	3,774.5	0.00	0.00	0.00
8,950.0	90.50	88.41	5,621.6	533.7	3,788.1	3,824.3	0.00	0.00	0.00
9,000.0	90.50	88.41	5,621.2	535.1	3,838.1	3,874.1	0.00	0.00	0.00
9,050.0	90.50	88.41	5,620.8	536.5	3,888.1	3,923.9	0.00	0.00	0.00
9,100.0	90.50	88.41	5,620.3	537.9	3,938.1	3,973.7	0.00	0.00	0.00
9,150.0	90.50	88.41	5,619.9	539.3	3,988.1	4,023.5	0.00	0.00	0.00

# Noble Energy Inc

## Planning Report

<b>Database:</b>	EDM Production	<b>Local Co-ordinate Reference:</b>	Well Rohn State LD10-63HN
<b>Company:</b>	Northern Region Drilling	<b>TVD Reference:</b>	WELL @ 4747.0usft (Original Well Elev)
<b>Project:</b>	Wattenberg Field	<b>MD Reference:</b>	WELL @ 4747.0usft (Original Well Elev)
<b>Site:</b>	LD (09N-58W)	<b>North Reference:</b>	Grid
<b>Well:</b>	Rohn State LD10-63HN	<b>Survey Calculation Method:</b>	Minimum Curvature
<b>Wellbore:</b>	Original Drilling		
<b>Design:</b>	APD - Rev 0		

Planned Survey										
Measured Depth (usft)	Inclination (°)	Azimuth (°)	Vertical Depth (usft)	+N/-S (usft)	+E/-W (usft)	Vertical Section (usft)	Dogleg Rate (°/100usft)	Build Rate (°/100usft)	Turn Rate (°/100usft)	
9,200.0	90.50	88.41	5,619.5	540.7	4,038.0	4,073.3	0.00	0.00	0.00	
9,250.0	90.50	88.41	5,619.0	542.0	4,088.0	4,123.2	0.00	0.00	0.00	
9,300.0	90.50	88.41	5,618.6	543.4	4,138.0	4,173.0	0.00	0.00	0.00	
9,350.0	90.50	88.41	5,618.2	544.8	4,188.0	4,222.8	0.00	0.00	0.00	
9,400.0	90.50	88.41	5,617.7	546.2	4,238.0	4,272.6	0.00	0.00	0.00	
9,450.0	90.50	88.41	5,617.3	547.6	4,287.9	4,322.4	0.00	0.00	0.00	
9,500.0	90.50	88.41	5,616.8	549.0	4,337.9	4,372.2	0.00	0.00	0.00	
9,550.0	90.50	88.41	5,616.4	550.4	4,387.9	4,422.0	0.00	0.00	0.00	
9,600.0	90.50	88.41	5,616.0	551.7	4,437.9	4,471.8	0.00	0.00	0.00	
9,650.0	90.50	88.41	5,615.5	553.1	4,487.8	4,521.6	0.00	0.00	0.00	
9,700.0	90.50	88.41	5,615.1	554.5	4,537.8	4,571.5	0.00	0.00	0.00	
9,750.0	90.50	88.41	5,614.7	555.9	4,587.8	4,621.3	0.00	0.00	0.00	
9,800.0	90.50	88.41	5,614.2	557.3	4,637.8	4,671.1	0.00	0.00	0.00	
9,850.0	90.50	88.41	5,613.8	558.7	4,687.8	4,720.9	0.00	0.00	0.00	
9,900.0	90.50	88.41	5,613.4	560.0	4,737.7	4,770.7	0.00	0.00	0.00	
9,950.0	90.50	88.41	5,612.9	561.4	4,787.7	4,820.5	0.00	0.00	0.00	
10,000.0	90.50	88.41	5,612.5	562.8	4,837.7	4,870.3	0.00	0.00	0.00	
10,050.0	90.50	88.41	5,612.0	564.2	4,887.7	4,920.1	0.00	0.00	0.00	
10,089.3	90.50	88.41	5,611.7	565.3	4,926.9	4,959.3	0.00	0.00	0.00	
TD at 10089.3 - Rohn State LD10-63HN BHL 1320'FSL, 660'FEL										

Design Targets										
Target Name	Dip Angle (°)	Dip Dir. (°)	TVD (usft)	+N/-S (usft)	+E/-W (usft)	Northing (usft)	Easting (usft)	Latitude	Longitude	
- hit/miss target										
- Shape										
Rohn State LD10-63HN	0.00	0.00	5,611.7	565.3	4,926.9	1,524,842.23	3,458,929.22	40° 45' 44.316 N	103° 50' 35.700 W	
- plan hits target center										
- Point										

Casing Points					
Measured Depth (usft)	Vertical Depth (usft)	Name	Casing Diameter (")	Hole Diameter (")	
6,038.8	5,636.6	7" Casing @ 6038.8' MD	7	8-3/4	



# Noble Energy Inc

## Planning Report

<b>Database:</b>	EDM Production	<b>Local Co-ordinate Reference:</b>	Well Rohn State LD10-63HN
<b>Company:</b>	Northern Region Drilling	<b>TVD Reference:</b>	WELL @ 4747.0usft (Original Well Elev)
<b>Project:</b>	Wattenberg Field	<b>MD Reference:</b>	WELL @ 4747.0usft (Original Well Elev)
<b>Site:</b>	LD (09N-58W)	<b>North Reference:</b>	Grid
<b>Well:</b>	Rohn State LD10-63HN	<b>Survey Calculation Method:</b>	Minimum Curvature
<b>Wellbore:</b>	Original Drilling		
<b>Design:</b>	APD - Rev 0		

Formations					
Measured Depth (usft)	Vertical Depth (usft)	Name	Lithology	Dip (°)	Dip Direction (°)
2,388.5	2,367.0	PIERRE		0.00	
3,287.1	3,239.0	PARKMAN		0.00	
3,919.2	3,866.0	SUSSEX		0.00	
4,356.2	4,303.0	SHANNON		0.00	
4,922.2	4,869.0	TEEPEE BUTTES		0.00	
5,772.2	5,565.0	SHARON SPRINGS		0.00	
5,798.0	5,576.0	NIOBRARA		0.00	
5,834.1	5,590.0	NIO A CHALK		0.00	
5,934.7	5,620.0	NIO A MARL		0.00	

Plan Annotations				
Measured Depth (usft)	Vertical Depth (usft)	Local Coordinates		Comment
		+N/-S (usft)	+E/-W (usft)	
1,200.0	1,200.0	0.0	0.0	KOP - Start Build 2.00
3,216.8	3,170.5	75.9	39.3	Start Drop -2.00
4,976.3	4,923.1	359.1	185.7	KOP #2 - Start Build 8.00
6,038.8	5,636.6	435.0	225.0	Start 75.0 hold at 6038.8 MD
6,113.8	5,643.1	435.0	225.0	Start Build 8.00
10,089.3	5,611.7	453.1	878.5	TD at 10089.3

# **Northern Region Drilling**

**Wattenberg Field**

**LD (09N-58W)**

**Rohn State LD10-63HN**

**Original Drilling**

**APD - Rev 0**

## **Anticollision Summary Report**

**18 April, 2013**

**Noble Energy Inc**  
Anticollision Summary Report

<b>Company:</b>	Northern Region Drilling	<b>Local Co-ordinate Reference:</b>	Well Rohn State LD10-63HN
<b>Project:</b>	Wattenberg Field	<b>TVD Reference:</b>	WELL @ 4747.0usft (Original Well Elev)
<b>Reference Site:</b>	LD (09N-58W)	<b>MD Reference:</b>	WELL @ 4747.0usft (Original Well Elev)
<b>Site Error:</b>	0.0 usft	<b>North Reference:</b>	Grid
<b>Reference Well:</b>	Rohn State LD10-63HN	<b>Survey Calculation Method:</b>	Minimum Curvature
<b>Well Error:</b>	0.0 usft	<b>Output errors are at</b>	2.54 sigma
<b>Reference Wellbore</b>	Original Drilling	<b>Database:</b>	EDM Production
<b>Reference Design:</b>	APD - Rev 0	<b>Offset TVD Reference:</b>	Offset Datum

<b>Reference</b>	APD - Rev 0		
<b>Filter type:</b>	NO GLOBAL FILTER: Using user defined selection & filtering criteria		
<b>Interpolation Method:</b>	Stations	<b>Error Model:</b>	ISCWSA
<b>Depth Range:</b>	Unlimited	<b>Scan Method:</b>	Closest Approach 3D
<b>Results Limited by:</b>	Maximum center-center distance of 10,000.0 usft	<b>Error Surface:</b>	Elliptical Conic
<b>Warning Levels Evaluated at:</b>	2.00 Sigma	<b>Casing Method:</b>	Not applied

<b>Survey Tool Program</b>	<b>Date</b>	4/18/2013		
<b>From (usft)</b>	<b>To (usft)</b>	<b>Survey (Wellbore)</b>	<b>Tool Name</b>	<b>Description</b>
0.0	10,089.3	APD - Rev 0 (Original Drilling)	MWD	MWD - Standard

<b>Summary</b>						
<b>Site Name</b>	<b>Reference Measured Depth (usft)</b>	<b>Offset Measured Depth (usft)</b>	<b>Distance Between Centres (usft)</b>	<b>Distance Between Ellipses (usft)</b>	<b>Separation Factor</b>	<b>Warning</b>
<b>Offset Well - Wellbore - Design</b>						
LD (09N-58W)						
Rohn State LD10-62HN - Original Drilling - APD - Rev 0	1,200.0	1,202.0	76.5	71.4	14.982	CC, ES
Rohn State LD10-62HN - Original Drilling - APD - Rev 0	10,089.3	10,068.9	661.4	394.2	2.476	SF
Rohn State LD10-63-1HN - Original Drilling - APD - Rev	1,200.0	1,202.0	36.4	31.3	7.134	CC, ES
Rohn State LD10-63-1HN - Original Drilling - APD - Rev	10,089.3	10,168.4	332.8	65.4	1.245	Level 2, SF

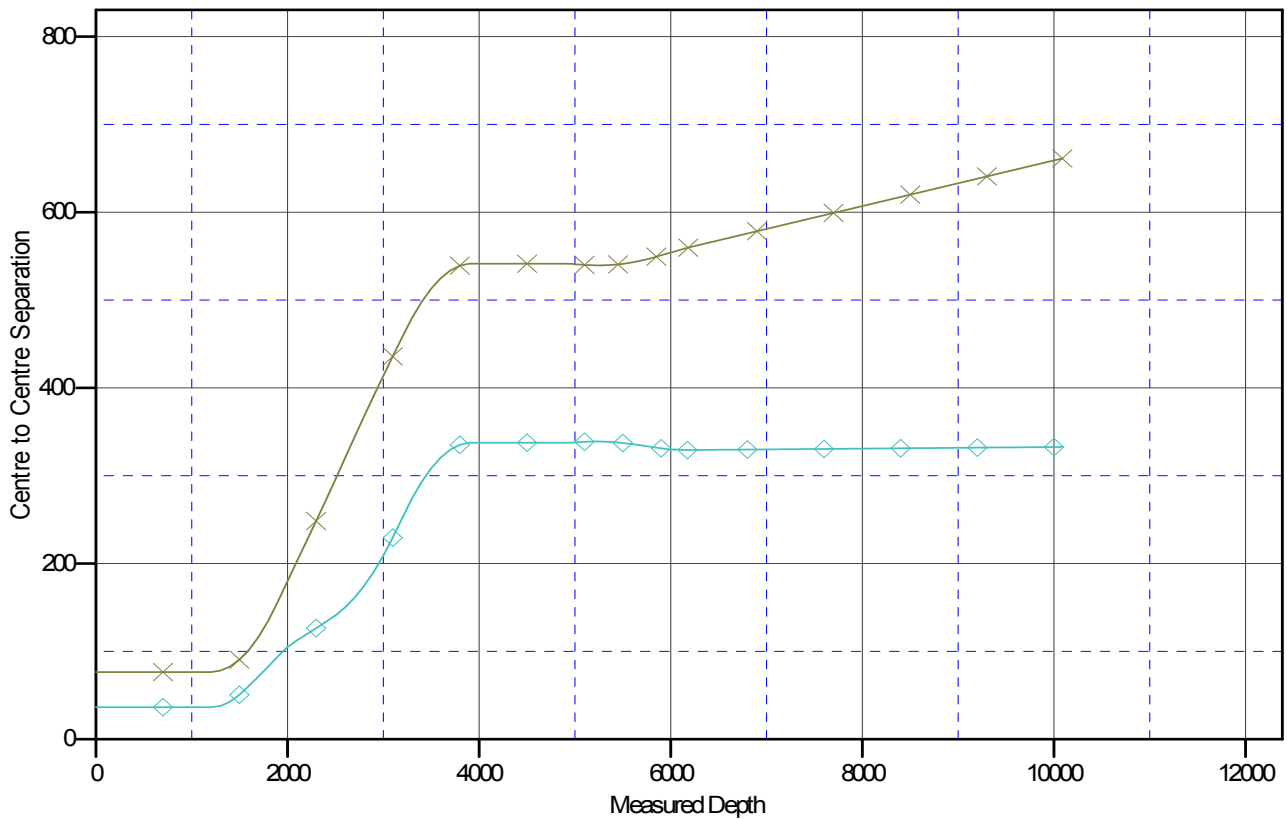
**Noble Energy Inc**  
Anticollision Summary Report

<b>Company:</b>	Northern Region Drilling	<b>Local Co-ordinate Reference:</b>	Well Rohn State LD10-63HN
<b>Project:</b>	Wattenberg Field	<b>TVD Reference:</b>	WELL @ 4747.0usft (Original Well Elev)
<b>Reference Site:</b>	LD (09N-58W)	<b>MD Reference:</b>	WELL @ 4747.0usft (Original Well Elev)
<b>Site Error:</b>	0.0 usft	<b>North Reference:</b>	Grid
<b>Reference Well:</b>	Rohn State LD10-63HN	<b>Survey Calculation Method:</b>	Minimum Curvature
<b>Well Error:</b>	0.0 usft	<b>Output errors are at</b>	2.54 sigma
<b>Reference Wellbore</b>	Original Drilling	<b>Database:</b>	EDM Production
<b>Reference Design:</b>	APD - Rev 0	<b>Offset TVD Reference:</b>	Offset Datum

Reference Depths are relative to WELL @ 4747.0usft (Original Well Ele  
Offset Depths are relative to Offset Datum  
Central Meridian is 105° 30' 0.000 W

Coordinates are relative to: Rohn State LD10-63HN  
Coordinate System is US State Plane 1983, Colorado Northern Zone  
Grid Convergence at Surface is: 1.06°

## Ladder Plot



### LEGEND

te LD10-63-1HN, Original Drilling, APD - Rev0 V0    x Rohn State LD10-62HN, Original Drilling, APD - Rev0 V0

**Noble Energy Inc**  
**Anticollision Summary Report**

<b>Company:</b>	Northern Region Drilling	<b>Local Co-ordinate Reference:</b>	Well Rohn State LD10-63HN
<b>Project:</b>	Wattenberg Field	<b>TVD Reference:</b>	WELL @ 4747.0usft (Original Well Elev)
<b>Reference Site:</b>	LD (09N-58W)	<b>MD Reference:</b>	WELL @ 4747.0usft (Original Well Elev)
<b>Site Error:</b>	0.0 usft	<b>North Reference:</b>	Grid
<b>Reference Well:</b>	Rohn State LD10-63HN	<b>Survey Calculation Method:</b>	Minimum Curvature
<b>Well Error:</b>	0.0 usft	<b>Output errors are at</b>	2.54 sigma
<b>Reference Wellbore</b>	Original Drilling	<b>Database:</b>	EDM Production
<b>Reference Design:</b>	APD - Rev 0	<b>Offset TVD Reference:</b>	Offset Datum

Reference Depths are relative to WELL @ 4747.0usft (Original Well Ele  
Offset Depths are relative to Offset Datum  
Central Meridian is 105° 30' 0.000 W

Coordinates are relative to: Rohn State LD10-63HN  
Coordinate System is US State Plane 1983, Colorado Northern Zone  
Grid Convergence at Surface is: 1.06°

