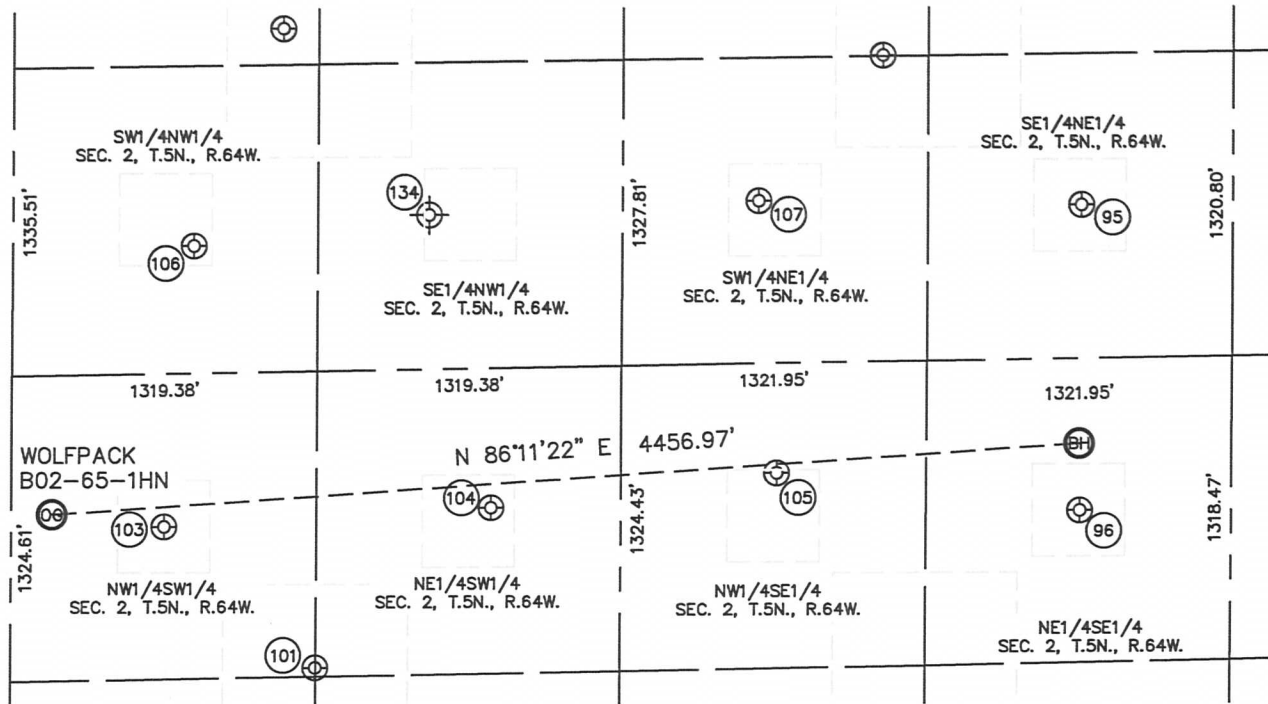


Lat40°, Inc. 1635 Foxtrail Drive, Suite 325 Loveland, CO 970-776-3321

SITE SKETCH

WOLFPACK B02-65-1HN

SECTION: 2
TOWNSHIP: 5N
RANGE: 64W



95

MEYER B2-8
SE1/4NE1/4
1983' FNL
656' FEL
LAT-40.43021'N
LONG-104.51026'W
PDOP: 2.3
ELEV: 4607'

96

MEYER B2-9
NE1/4SE1/4
1981' FSL
656' FEL
LAT-40.42658'N
LONG-104.51033'W
PDOP: 1.6
ELEV: 4603'

101

BUCKMUR B2-25
NW1/4SW1/4
1363' FSL
1317' FWL
LAT-40.42483'N
LONG-104.52224'W
PDOP: 2.5
ELEV: 4620'

103

BUCKLEN B2-12
NW1/4SW1/4
1987' FSL
660' FWL
LAT-40.42654'N
LONG-104.52457'W
PDOP: 1.6
ELEV: 4625'

104

PPERSON 2-2
NE1/4SW1/4
2045' FSL
2075' FWL
LAT-40.42671'N
LONG-104.51948'W
PDOP: 1.3
ELEV: 4626'

105

TREBOR B2-10
NW1/4SE1/4
2169' FSL
1968' FEL
LAT-40.42707'N
LONG-104.51503'W
PDOP: 1.9
ELEV: 4612'

106

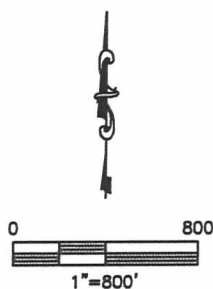
BAKER B2-5
SW1/4NW1/4
2097' FNL
781' FWL
LAT-40.42987'N
LONG-104.52407'W
PDOP: 1.9
ELEV: 4639'

107

FOE B2-7
SW1/4NE1/4
1942' FNL
2053' FEL
LAT-40.43031'N
LONG-104.51528'W
PDOP: 1.9
ELEV: 4611'

134

FRITZLER B2-6
(Plugged & Abandoned)
SE1/4NW1/4
1980' FNL (COGCC)
1800' FWL (COGCC)
LAT-40.430175'N (COGCC)
LONG-104.520544'W (COGCC)
PDOP: N/A
ELEV: 4617' (COGCC)



DATE: 12/4/2012
PROJECT#: 2012029