

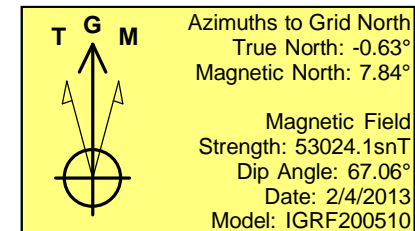
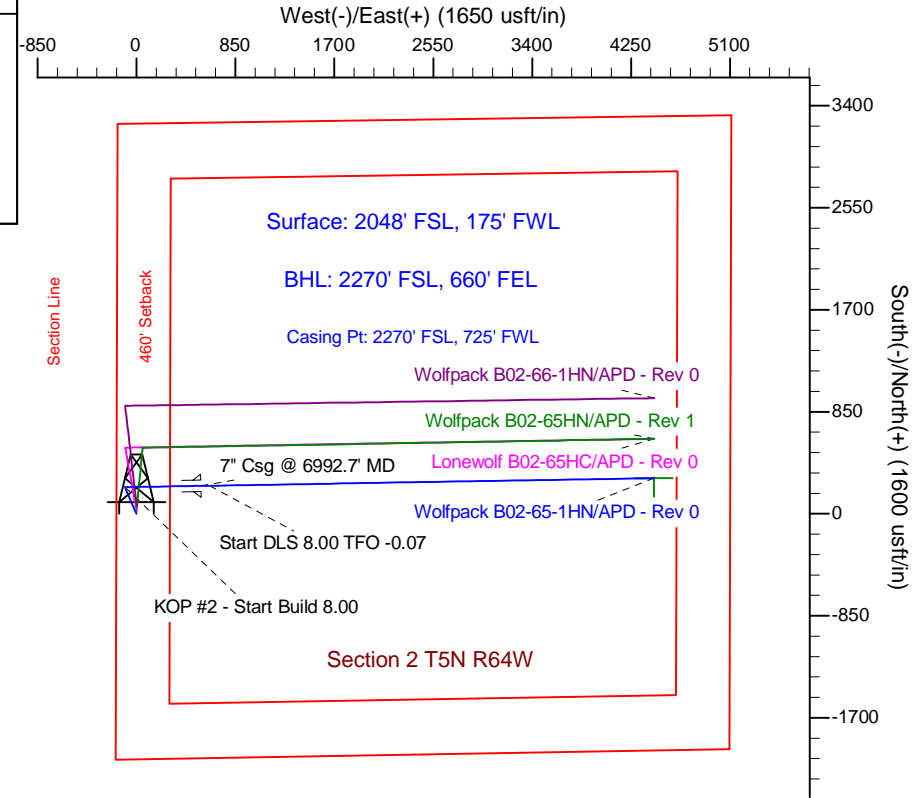
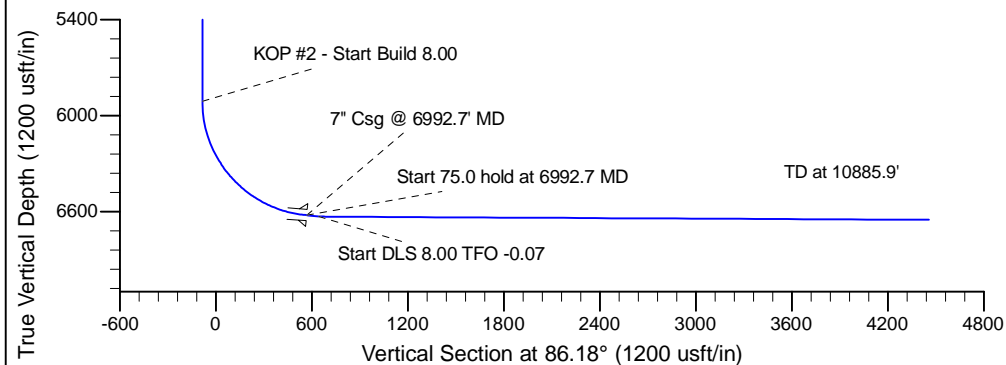
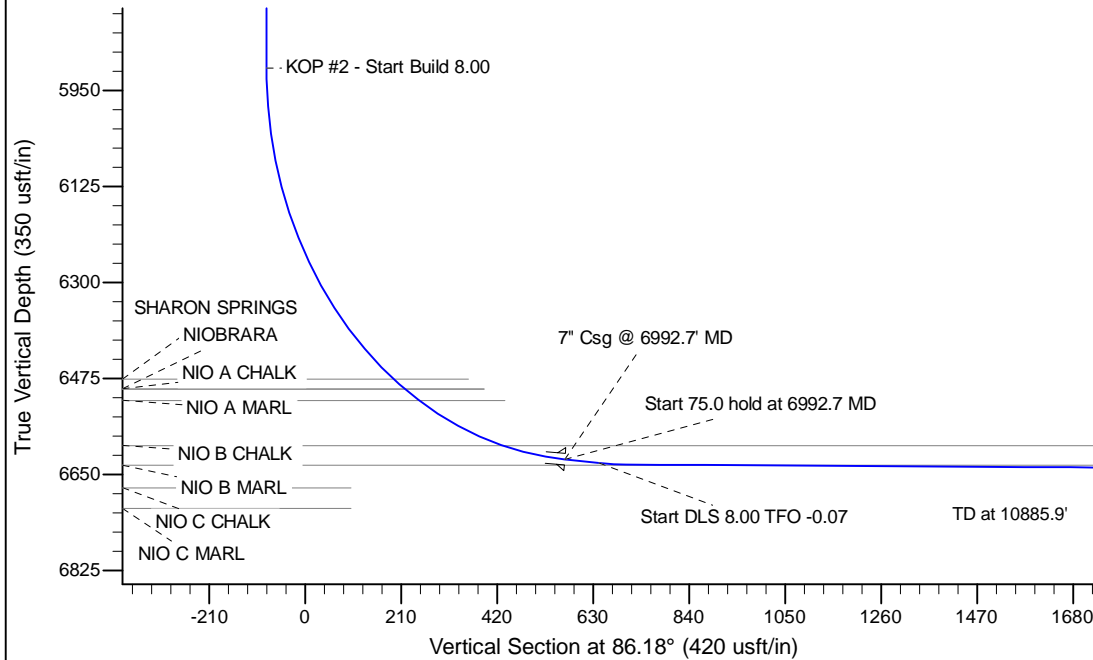
Project: Wattenberg Field
Site: B (Sec.2-T05N-R64W) Weld County, CO
Well: Wolfpack B02-65-1HN
Wellbore: Original Drilling
Design: APD - Rev 0

Northern Region Drilling

Geodetic System: US State Plane 1983
Datum: North American Datum 1983
Ellipsoid: GRS 1980
Zone: Colorado Northern Zone
System Datum: Mean Sea Level

SECTION DETAILS

Sec	MD	Inc	Azi	TVD	+N/-S	+E/-W	Dleg	TFace	V Sect	Target
1	0.0	0.00	0.00	0.0	0.0	0.0	0.00	0.00	0.0	
2	2200.0	0.00	0.00	2200.0	0.0	0.0	0.00	0.00	0.0	
3	2800.7	12.01	335.75	2796.3	57.2	-25.8	2.00	335.75	-21.9	
4	3367.5	12.01	335.75	3350.7	164.8	-74.2	0.00	0.00	-63.1	
5	3968.2	0.00	0.00	3947.0	222.0	-100.0	2.00	180.00	-85.0	
6	5930.2	0.00	0.00	5909.0	222.0	-100.0	0.00	0.00	-85.0	
7	6992.7	85.00	89.06	6622.5	232.7	553.7	8.00	89.06	568.0	
8	7067.7	85.00	89.06	6629.0	234.0	628.4	0.00	0.00	642.6	
9	7126.5	89.70	89.05	6631.7	234.9	687.1	8.00	-0.07	701.2	
10	10885.9	89.70	89.05	6651.3	297.0	4446.0	0.00	0.00	4455.9	Wolfpack B02-65-1HN BHL 2270'FSL, 660'FSL



WELL DETAILS: Wolfpack B02-65-1HN			
Ground Level:	4625.0	Latitude	40.426700
Northing	1399775.39	Easting	3271070.50
		Longitude	-104.526310
Plan: APD - Rev 0 (Wolfpack B02-65-1HN/Original Drilling)			
Created By:	Carrie Wilers	Date:	18:45, February 07 2013
Checked:		Date:	
Reviewed:		Date:	
Approved:		Date:	