



Lat40°, Inc. 1635 Foxtrail Drive, Suite 325 Loveland, CO 970-776-3321

WELL LOCATION CERTIFICATE

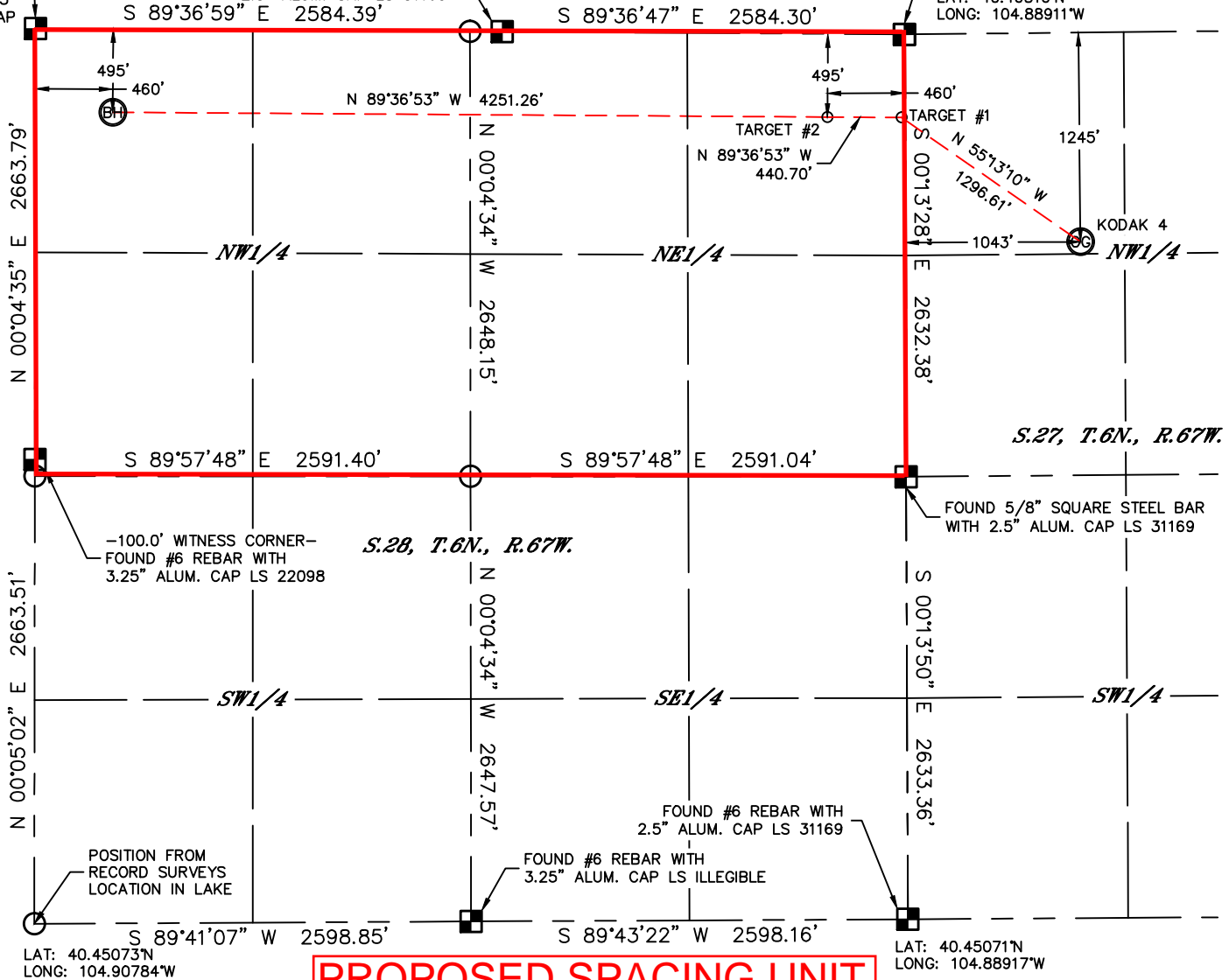
SECTION: 27
TOWNSHIP: 6N
RANGE: 67W

LAT: 40.46535°N
LONG: 104.90768°W

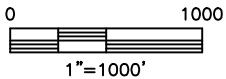
THIS MAP DOES NOT REPRESENT A BOUNDARY SURVEY

FOUND #6 REBAR WITH
3.25" ALUM. CAP LS 20685
LAT: 40.46516°N
LONG: 104.88911°W

FOUND
#6 REBAR
WITH 3.25"
BRASS CAP



PROPOSED SPACING UNIT



NOTE

According to Colorado law, you must commence any legal action based upon any defect in this W.L.C. within three years after you discover such defect. In no event, may any action based upon any defect in this survey be commenced more than ten years after the date of the certificate shown hereon. (13-80-105 C.R.S.)

LEGEND

- = ALIQUOT MONUMENT AS DESCRIBED
- = CALCULATED POSITION

SHEET 2 OF 2

Brian T. Brinkman—On behalf of Lat40°, Inc.
Colorado Licensed Professional Land Surveyor No. 38175
DATE: 3/5/2013
PROJECT#: 2012167

