

Lat40°, Inc. 1635 Foxtrail Drive, Suite 325 Loveland, CO 970-776-3321

# WELL LOCATION CERTIFICATE

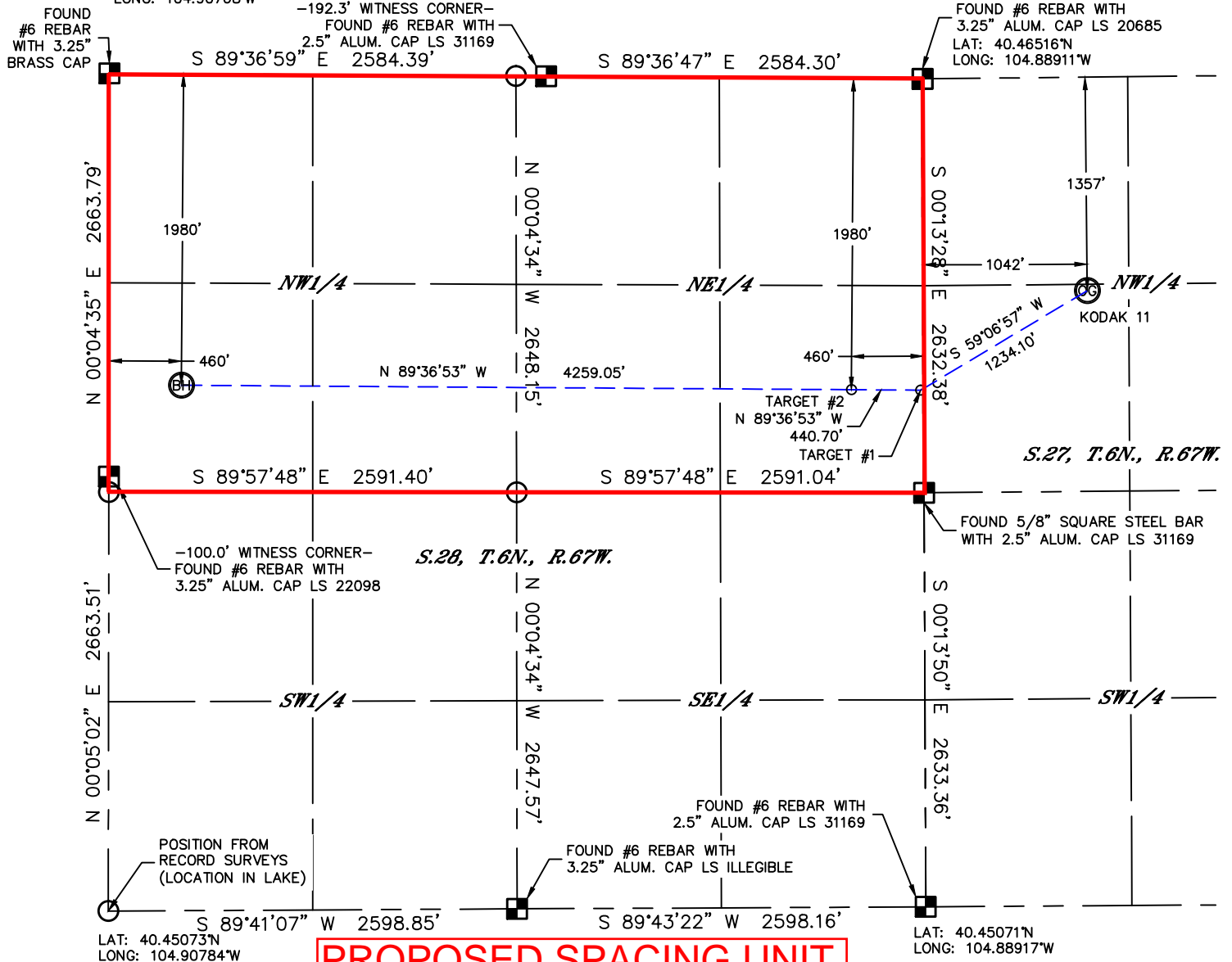
SECTION: 27  
TOWNSHIP: 6N  
RANGE: 67W

LAT: 40.46535°N  
LONG: 104.90768°W

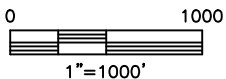
THIS MAP DOES NOT REPRESENT A BOUNDARY SURVEY

FOUND #6 REBAR WITH  
2.5" ALUM. CAP LS 31169

FOUND #6 REBAR WITH  
3.25" ALUM. CAP LS 20685  
LAT: 40.46516°N  
LONG: 104.88911°W





## PROPOSED SPACING UNIT



NOTE

NOTE According to Colorado law, you must commence any legal action based upon any defect in this W.L.C. within three years after you discover such defect. In no event, may any action based upon any defect in this survey be commenced more than ten years after the date of the certificate shown hereon. (13-80-105 C.R.S.)

### LEGEND

-  = ALIQUOT MONUMENT AS DESCRIBED  
 = CALCULATED POSITION

**SHEET 2 OF 2**

Brian T. Brinkman—On behalf of WALLAND, Inc.  
Colorado Licensed Professional Land Surveyor No. 38175  
DATE: 3/5/2013  
PROJECT#: 2012167

