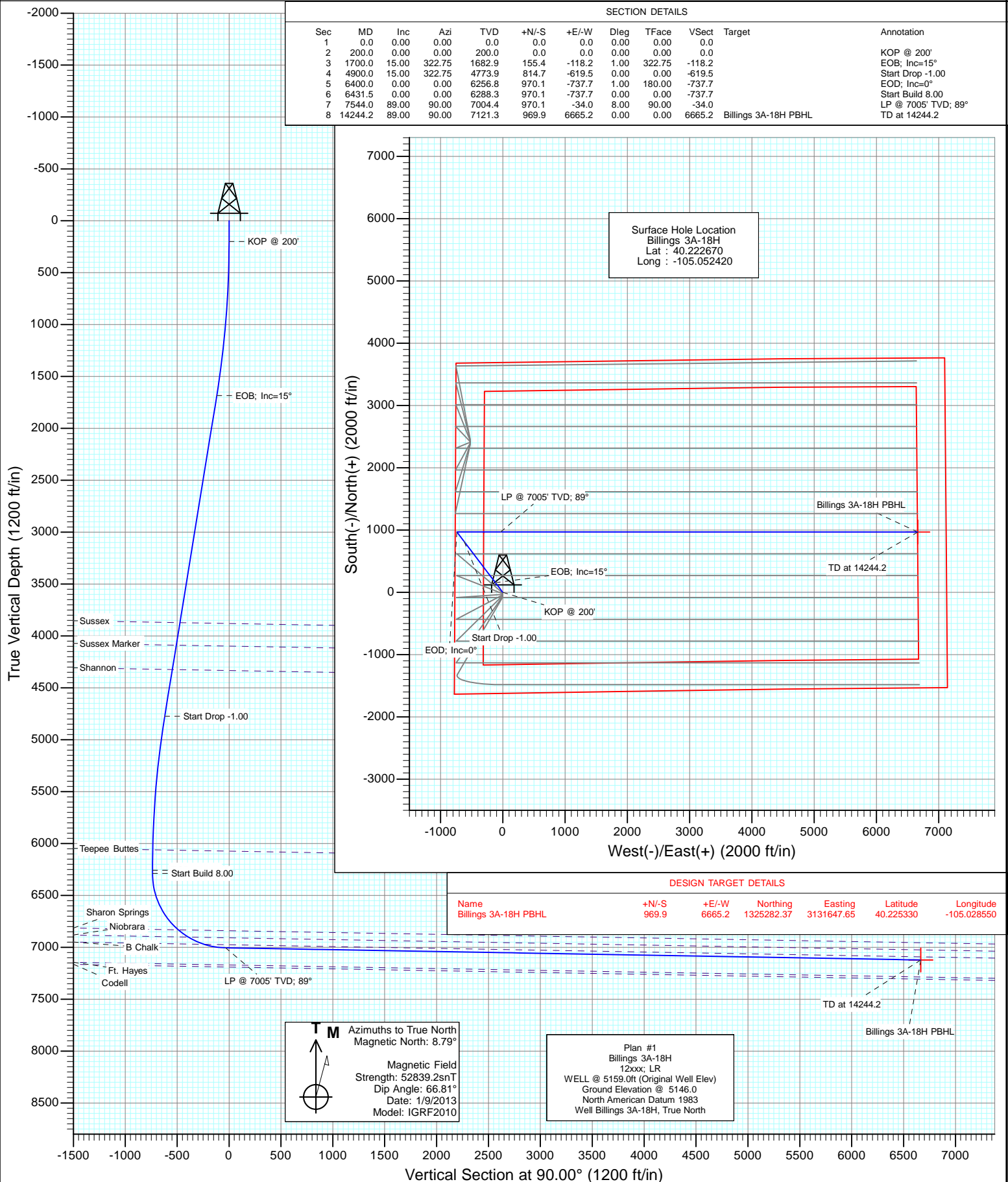




Project: DJ Wattenberg  
Site: S18-T3N-R68W (Billings)  
Well: Billings 3A-18H  
Wellbore: Hz  
Design: Plan #1



## Planning Report

<b>Database:</b>	USA EDM 5000 Multi Users DB	<b>Local Co-ordinate Reference:</b>	Well Billings 3A-18H
<b>Company:</b>	EnCana Oil & Gas (USA) Inc	<b>TVD Reference:</b>	WELL @ 5159.0ft (Original Well Elev)
<b>Project:</b>	DJ Wattenberg	<b>MD Reference:</b>	WELL @ 5159.0ft (Original Well Elev)
<b>Site:</b>	S18-T3N-R68W (Billings)	<b>North Reference:</b>	True
<b>Well:</b>	Billings 3A-18H	<b>Survey Calculation Method:</b>	Minimum Curvature
<b>Wellbore:</b>	Hz		
<b>Design:</b>	Plan #1		

<b>Project</b>	DJ Wattenberg		
<b>Map System:</b>	US State Plane 1983	<b>System Datum:</b>	Mean Sea Level
<b>Geo Datum:</b>	North American Datum 1983		
<b>Map Zone:</b>	Colorado Northern Zone		

Site		S18-T3N-R68W (Billings)			
Site Position:		Northing:	1,326,724.18 ft	Latitude:	40.229390
From:	Lat/Long	Easting:	3,124,452.97 ft	Longitude:	-105.054290
Position Uncertainty:	0.0 ft	Slot Radius:	13.200 in	Grid Convergence:	0.29 °

Well	Billings 3A-18H					
Well Position	+N/-S	0.0 ft	Northing:	1,324,278.83 ft	Latitude:	40.222670
	+E/-W	0.0 ft	Easting:	3,124,987.45 ft	Longitude:	-105.052420
Position Uncertainty		0.0 ft	Wellhead Elevation:	ft	Ground Level:	5,146.0 ft

<b>Wellbore</b>	Hz				
<b>Magnetics</b>	<b>Model Name</b>	<b>Sample Date</b>	<b>Declination (°)</b>	<b>Dip Angle (°)</b>	<b>Field Strength (nT)</b>
	IGRF2010	1/9/2013	8.79	66.81	52,839

<b>Design</b>	Plan #1				
<b>Audit Notes:</b>					
<b>Version:</b>	<b>Phase:</b>	PLAN	<b>Tie On Depth:</b>	0.0	
<b>Vertical Section:</b>	<b>Depth From (TVD) (ft)</b>	<b>+N/-S (ft)</b>	<b>+E/-W (ft)</b>	<b>Direction (°)</b>	
	0.0	0.0	0.0	90.00	

<b>Plan Sections</b>										
Measured Depth (ft)	Inclination (°)	Azimuth (°)	Vertical Depth (ft)	+N/-S (ft)	+E/-W (ft)	Dogleg Rate (°/100ft)	Build Rate (°/100ft)	Turn Rate (°/100ft)	TFO (°)	Target
0.0	0.00	0.00	0.0	0.0	0.0	0.00	0.00	0.00	0.00	
200.0	0.00	0.00	200.0	0.0	0.0	0.00	0.00	0.00	0.00	
1,700.0	15.00	322.75	1,682.9	155.4	-118.2	1.00	1.00	0.00	322.75	
4,900.0	15.00	322.75	4,773.9	814.7	-619.5	0.00	0.00	0.00	0.00	
6,400.0	0.00	0.00	6,256.8	970.1	-737.7	1.00	-1.00	0.00	180.00	
6,431.5	0.00	0.00	6,288.3	970.1	-737.7	0.00	0.00	0.00	0.00	
7,544.0	89.00	90.00	7,004.4	970.1	-34.0	8.00	8.00	0.00	90.00	
14,244.2	89.00	90.00	7,121.3	969.9	6,665.2	0.00	0.00	0.00	0.00	Billings 3A-18H PBHL

# Planning Report

<b>Database:</b>	USA EDM 5000 Multi Users DB	<b>Local Co-ordinate Reference:</b>	Well Billings 3A-18H
<b>Company:</b>	EnCana Oil & Gas (USA) Inc	<b>TVD Reference:</b>	WELL @ 5159.0ft (Original Well Elev)
<b>Project:</b>	DJ Wattenberg	<b>MD Reference:</b>	WELL @ 5159.0ft (Original Well Elev)
<b>Site:</b>	S18-T3N-R68W (Billings)	<b>North Reference:</b>	True
<b>Well:</b>	Billings 3A-18H	<b>Survey Calculation Method:</b>	Minimum Curvature
<b>Wellbore:</b>	Hz		
<b>Design:</b>	Plan #1		

Planned Survey									
Measured Depth (ft)	Inclination (°)	Azimuth (°)	Vertical Depth (ft)	+N/-S (ft)	+E/-W (ft)	Vertical Section (ft)	Dogleg Rate (°/100ft)	Build Rate (°/100ft)	Comments / Formations
0.0	0.00	0.00	0.0	0.0	0.0	0.0	0.00	0.00	
100.0	0.00	0.00	100.0	0.0	0.0	0.0	0.00	0.00	
200.0	0.00	0.00	200.0	0.0	0.0	0.0	0.00	0.00	KOP @ 200'
300.0	1.00	322.75	300.0	0.7	-0.5	-0.5	1.00	1.00	
400.0	2.00	322.75	400.0	2.8	-2.1	-2.1	1.00	1.00	
500.0	3.00	322.75	499.9	6.3	-4.8	-4.8	1.00	1.00	
600.0	4.00	322.75	599.7	11.1	-8.4	-8.4	1.00	1.00	
700.0	5.00	322.75	699.4	17.4	-13.2	-13.2	1.00	1.00	
800.0	6.00	322.75	798.9	25.0	-19.0	-19.0	1.00	1.00	
900.0	7.00	322.75	898.3	34.0	-25.9	-25.9	1.00	1.00	
1,000.0	8.00	322.75	997.4	44.4	-33.8	-33.8	1.00	1.00	
1,100.0	9.00	322.75	1,096.3	56.2	-42.7	-42.7	1.00	1.00	
1,200.0	10.00	322.75	1,194.9	69.3	-52.7	-52.7	1.00	1.00	
1,300.0	11.00	322.75	1,293.3	83.8	-63.7	-63.7	1.00	1.00	
1,400.0	12.00	322.75	1,391.2	99.7	-75.8	-75.8	1.00	1.00	
1,500.0	13.00	322.75	1,488.9	116.9	-88.9	-88.9	1.00	1.00	
1,600.0	14.00	322.75	1,586.1	135.5	-103.0	-103.0	1.00	1.00	
1,700.0	15.00	322.75	1,682.9	155.4	-118.2	-118.2	1.00	1.00	EOB; Inc=15°
1,800.0	15.00	322.75	1,779.5	176.0	-133.8	-133.8	0.00	0.00	
1,900.0	15.00	322.75	1,876.1	196.6	-149.5	-149.5	0.00	0.00	
2,000.0	15.00	322.75	1,972.7	217.2	-165.2	-165.2	0.00	0.00	
2,100.0	15.00	322.75	2,069.3	237.8	-180.8	-180.8	0.00	0.00	
2,200.0	15.00	322.75	2,165.9	258.4	-196.5	-196.5	0.00	0.00	
2,300.0	15.00	322.75	2,262.5	279.0	-212.2	-212.2	0.00	0.00	
2,400.0	15.00	322.75	2,359.1	299.6	-227.8	-227.8	0.00	0.00	
2,500.0	15.00	322.75	2,455.7	320.2	-243.5	-243.5	0.00	0.00	
2,600.0	15.00	322.75	2,552.3	340.8	-259.2	-259.2	0.00	0.00	
2,700.0	15.00	322.75	2,648.8	361.4	-274.8	-274.8	0.00	0.00	
2,800.0	15.00	322.75	2,745.4	382.0	-290.5	-290.5	0.00	0.00	
2,900.0	15.00	322.75	2,842.0	402.6	-306.2	-306.2	0.00	0.00	
3,000.0	15.00	322.75	2,938.6	423.2	-321.8	-321.8	0.00	0.00	
3,100.0	15.00	322.75	3,035.2	443.8	-337.5	-337.5	0.00	0.00	
3,200.0	15.00	322.75	3,131.8	464.4	-353.2	-353.2	0.00	0.00	
3,300.0	15.00	322.75	3,228.4	485.0	-368.8	-368.8	0.00	0.00	
3,400.0	15.00	322.75	3,325.0	505.6	-384.5	-384.5	0.00	0.00	
3,500.0	15.00	322.75	3,421.6	526.2	-400.2	-400.2	0.00	0.00	
3,600.0	15.00	322.75	3,518.2	546.8	-415.8	-415.8	0.00	0.00	
3,700.0	15.00	322.75	3,614.8	567.4	-431.5	-431.5	0.00	0.00	
3,800.0	15.00	322.75	3,711.4	588.0	-447.2	-447.2	0.00	0.00	
3,900.0	15.00	322.75	3,808.0	608.6	-462.8	-462.8	0.00	0.00	
3,966.0	15.00	322.75	3,871.7	622.3	-473.2	-473.2	0.00	0.00	Sussex
4,000.0	15.00	322.75	3,904.6	629.3	-478.5	-478.5	0.00	0.00	
4,100.0	15.00	322.75	4,001.1	649.9	-494.2	-494.2	0.00	0.00	
4,190.1	15.00	322.75	4,088.1	668.4	-508.3	-508.3	0.00	0.00	Sussex Marker
4,200.0	15.00	322.75	4,097.7	670.5	-509.8	-509.8	0.00	0.00	
4,300.0	15.00	322.75	4,194.3	691.1	-525.5	-525.5	0.00	0.00	
4,400.0	15.00	322.75	4,290.9	711.7	-541.2	-541.2	0.00	0.00	
4,433.7	15.00	322.75	4,323.5	718.6	-546.4	-546.4	0.00	0.00	Shannon
4,500.0	15.00	322.75	4,387.5	732.3	-556.8	-556.8	0.00	0.00	
4,600.0	15.00	322.75	4,484.1	752.9	-572.5	-572.5	0.00	0.00	
4,700.0	15.00	322.75	4,580.7	773.5	-588.2	-588.2	0.00	0.00	
4,800.0	15.00	322.75	4,677.3	794.1	-603.8	-603.8	0.00	0.00	

# Planning Report

<b>Database:</b>	USA EDM 5000 Multi Users DB	<b>Local Co-ordinate Reference:</b>	Well Billings 3A-18H
<b>Company:</b>	EnCana Oil & Gas (USA) Inc	<b>TVD Reference:</b>	WELL @ 5159.0ft (Original Well Elev)
<b>Project:</b>	DJ Wattenberg	<b>MD Reference:</b>	WELL @ 5159.0ft (Original Well Elev)
<b>Site:</b>	S18-T3N-R68W (Billings)	<b>North Reference:</b>	True
<b>Well:</b>	Billings 3A-18H	<b>Survey Calculation Method:</b>	Minimum Curvature
<b>Wellbore:</b>	Hz		
<b>Design:</b>	Plan #1		

Planned Survey									
Measured Depth (ft)	Inclination (°)	Azimuth (°)	Vertical Depth (ft)	+N/-S (ft)	+E/-W (ft)	Vertical Section (ft)	Dogleg Rate (°/100ft)	Build Rate (°/100ft)	Comments / Formations
4,900.0	15.00	322.75	4,773.9	814.7	-619.5	-619.5	0.00	0.00	Start Drop -1.00
5,000.0	14.00	322.75	4,870.7	834.6	-634.6	-634.6	1.00	-1.00	
5,100.0	13.00	322.75	4,967.9	853.2	-648.8	-648.8	1.00	-1.00	
5,200.0	12.00	322.75	5,065.6	870.4	-661.9	-661.9	1.00	-1.00	
5,300.0	11.00	322.75	5,163.6	886.3	-673.9	-673.9	1.00	-1.00	
5,400.0	10.00	322.75	5,261.9	900.8	-685.0	-685.0	1.00	-1.00	
5,500.0	9.00	322.75	5,360.5	913.9	-695.0	-695.0	1.00	-1.00	
5,600.0	8.00	322.75	5,459.4	925.7	-703.9	-703.9	1.00	-1.00	
5,700.0	7.00	322.75	5,558.6	936.1	-711.8	-711.8	1.00	-1.00	
5,800.0	6.00	322.75	5,657.9	945.1	-718.7	-718.7	1.00	-1.00	
5,900.0	5.00	322.75	5,757.4	952.7	-724.5	-724.5	1.00	-1.00	
6,000.0	4.00	322.75	5,857.1	959.0	-729.2	-729.2	1.00	-1.00	
6,100.0	3.00	322.75	5,956.9	963.8	-732.9	-732.9	1.00	-1.00	
6,200.0	2.00	322.75	6,056.9	967.3	-735.5	-735.5	1.00	-1.00	
6,203.3	1.97	322.75	6,060.2	967.4	-735.6	-735.6	1.00	-1.00	Teepee Buttes
6,300.0	1.00	322.75	6,156.8	969.4	-737.1	-737.1	1.00	-1.00	
6,400.0	0.00	0.00	6,256.8	970.1	-737.7	-737.7	1.00	-1.00	EOD; Inc=0°
6,431.5	0.00	0.00	6,288.3	970.1	-737.7	-737.7	0.00	0.00	Start Build 8.00
6,500.0	5.48	90.00	6,356.7	970.1	-734.4	-734.4	8.00	8.00	
6,600.0	13.48	90.00	6,455.3	970.1	-717.9	-717.9	8.00	8.00	
6,700.0	21.48	90.00	6,550.6	970.1	-687.9	-687.9	8.00	8.00	
6,800.0	29.48	90.00	6,640.8	970.1	-644.9	-644.9	8.00	8.00	
6,900.0	37.48	90.00	6,724.1	970.1	-589.8	-589.8	8.00	8.00	
7,000.0	45.48	90.00	6,799.0	970.1	-523.6	-523.6	8.00	8.00	
7,046.5	49.20	90.00	6,830.5	970.1	-489.5	-489.5	8.00	8.00	Sharon Springs
7,100.0	53.48	90.00	6,863.9	970.1	-447.7	-447.7	8.00	8.00	
7,166.9	58.84	90.00	6,901.2	970.1	-392.1	-392.1	8.00	8.00	Niobrara
7,200.0	61.48	90.00	6,917.6	970.1	-363.4	-363.4	8.00	8.00	
7,300.0	69.48	90.00	6,959.1	970.1	-272.5	-272.5	8.00	8.00	
7,336.0	72.36	90.00	6,970.8	970.1	-238.5	-238.5	8.00	8.00	B Chalk
7,400.0	77.48	90.00	6,987.5	970.1	-176.7	-176.7	8.00	8.00	
7,500.0	85.48	90.00	7,002.3	970.1	-77.9	-77.9	8.00	8.00	
7,544.0	89.00	90.00	7,004.4	970.1	-34.0	-34.0	8.00	8.00	LP @ 7005' TVD; 89°
7,600.0	89.00	90.00	7,005.4	970.1	22.0	22.0	0.00	0.00	
7,700.0	89.00	90.00	7,007.1	970.1	122.0	122.0	0.00	0.00	
7,800.0	89.00	90.00	7,008.9	970.1	222.0	222.0	0.00	0.00	
7,900.0	89.00	90.00	7,010.6	970.0	322.0	322.0	0.00	0.00	
8,000.0	89.00	90.00	7,012.4	970.0	422.0	422.0	0.00	0.00	
8,100.0	89.00	90.00	7,014.1	970.0	521.9	521.9	0.00	0.00	
8,200.0	89.00	90.00	7,015.9	970.0	621.9	621.9	0.00	0.00	
8,300.0	89.00	90.00	7,017.6	970.0	721.9	721.9	0.00	0.00	
8,400.0	89.00	90.00	7,019.3	970.0	821.9	821.9	0.00	0.00	
8,500.0	89.00	90.00	7,021.1	970.0	921.9	921.9	0.00	0.00	
8,600.0	89.00	90.00	7,022.8	970.0	1,021.9	1,021.9	0.00	0.00	
8,700.0	89.00	90.00	7,024.6	970.0	1,121.9	1,121.9	0.00	0.00	
8,800.0	89.00	90.00	7,026.3	970.0	1,221.8	1,221.8	0.00	0.00	
8,900.0	89.00	90.00	7,028.1	970.0	1,321.8	1,321.8	0.00	0.00	
9,000.0	89.00	90.00	7,029.8	970.0	1,421.8	1,421.8	0.00	0.00	
9,100.0	89.00	90.00	7,031.6	970.0	1,521.8	1,521.8	0.00	0.00	
9,200.0	89.00	90.00	7,033.3	970.0	1,621.8	1,621.8	0.00	0.00	
9,300.0	89.00	90.00	7,035.1	970.0	1,721.8	1,721.8	0.00	0.00	
9,400.0	89.00	90.00	7,036.8	970.0	1,821.7	1,821.7	0.00	0.00	

# Planning Report

<b>Database:</b>	USA EDM 5000 Multi Users DB	<b>Local Co-ordinate Reference:</b>	Well Billings 3A-18H
<b>Company:</b>	EnCana Oil & Gas (USA) Inc	<b>TVD Reference:</b>	WELL @ 5159.0ft (Original Well Elev)
<b>Project:</b>	DJ Wattenberg	<b>MD Reference:</b>	WELL @ 5159.0ft (Original Well Elev)
<b>Site:</b>	S18-T3N-R68W (Billings)	<b>North Reference:</b>	True
<b>Well:</b>	Billings 3A-18H	<b>Survey Calculation Method:</b>	Minimum Curvature
<b>Wellbore:</b>	Hz		
<b>Design:</b>	Plan #1		

Planned Survey									
Measured Depth (ft)	Inclination (°)	Azimuth (°)	Vertical Depth (ft)	+N/-S (ft)	+E/-W (ft)	Vertical Section (ft)	Dogleg Rate (°/100ft)	Build Rate (°/100ft)	Comments / Formations
9,500.0	89.00	90.00	7,038.5	970.0	1,921.7	1,921.7	0.00	0.00	
9,600.0	89.00	90.00	7,040.3	970.0	2,021.7	2,021.7	0.00	0.00	
9,700.0	89.00	90.00	7,042.0	970.0	2,121.7	2,121.7	0.00	0.00	
9,800.0	89.00	90.00	7,043.8	970.0	2,221.7	2,221.7	0.00	0.00	
9,900.0	89.00	90.00	7,045.5	970.0	2,321.7	2,321.7	0.00	0.00	
10,000.0	89.00	90.00	7,047.3	970.0	2,421.7	2,421.7	0.00	0.00	
10,100.0	89.00	90.00	7,049.0	970.0	2,521.6	2,521.6	0.00	0.00	
10,200.0	89.00	90.00	7,050.8	970.0	2,621.6	2,621.6	0.00	0.00	
10,300.0	89.00	90.00	7,052.5	970.0	2,721.6	2,721.6	0.00	0.00	
10,400.0	89.00	90.00	7,054.2	970.0	2,821.6	2,821.6	0.00	0.00	
10,500.0	89.00	90.00	7,056.0	970.0	2,921.6	2,921.6	0.00	0.00	
10,600.0	89.00	90.00	7,057.7	970.0	3,021.6	3,021.6	0.00	0.00	
10,700.0	89.00	90.00	7,059.5	970.0	3,121.5	3,121.5	0.00	0.00	
10,800.0	89.00	90.00	7,061.2	970.0	3,221.5	3,221.5	0.00	0.00	
10,900.0	89.00	90.00	7,063.0	970.0	3,321.5	3,321.5	0.00	0.00	
11,000.0	89.00	90.00	7,064.7	970.0	3,421.5	3,421.5	0.00	0.00	
11,100.0	89.00	90.00	7,066.5	970.0	3,521.5	3,521.5	0.00	0.00	
11,200.0	89.00	90.00	7,068.2	970.0	3,621.5	3,621.5	0.00	0.00	
11,300.0	89.00	90.00	7,070.0	970.0	3,721.5	3,721.5	0.00	0.00	
11,400.0	89.00	90.00	7,071.7	970.0	3,821.4	3,821.4	0.00	0.00	
11,500.0	89.00	90.00	7,073.4	970.0	3,921.4	3,921.4	0.00	0.00	
11,600.0	89.00	90.00	7,075.2	970.0	4,021.4	4,021.4	0.00	0.00	
11,700.0	89.00	90.00	7,076.9	970.0	4,121.4	4,121.4	0.00	0.00	
11,800.0	89.00	90.00	7,078.7	970.0	4,221.4	4,221.4	0.00	0.00	
11,900.0	89.00	90.00	7,080.4	970.0	4,321.4	4,321.4	0.00	0.00	
12,000.0	89.00	90.00	7,082.2	970.0	4,421.4	4,421.4	0.00	0.00	
12,100.0	89.00	90.00	7,083.9	970.0	4,521.3	4,521.3	0.00	0.00	
12,200.0	89.00	90.00	7,085.7	970.0	4,621.3	4,621.3	0.00	0.00	
12,300.0	89.00	90.00	7,087.4	969.9	4,721.3	4,721.3	0.00	0.00	
12,400.0	89.00	90.00	7,089.2	969.9	4,821.3	4,821.3	0.00	0.00	
12,500.0	89.00	90.00	7,090.9	969.9	4,921.3	4,921.3	0.00	0.00	
12,600.0	89.00	90.00	7,092.6	969.9	5,021.3	5,021.3	0.00	0.00	
12,700.0	89.00	90.00	7,094.4	969.9	5,121.2	5,121.2	0.00	0.00	
12,800.0	89.00	90.00	7,096.1	969.9	5,221.2	5,221.2	0.00	0.00	
12,900.0	89.00	90.00	7,097.9	969.9	5,321.2	5,321.2	0.00	0.00	
13,000.0	89.00	90.00	7,099.6	969.9	5,421.2	5,421.2	0.00	0.00	
13,100.0	89.00	90.00	7,101.4	969.9	5,521.2	5,521.2	0.00	0.00	
13,200.0	89.00	90.00	7,103.1	969.9	5,621.2	5,621.2	0.00	0.00	
13,300.0	89.00	90.00	7,104.9	969.9	5,721.2	5,721.2	0.00	0.00	
13,400.0	89.00	90.00	7,106.6	969.9	5,821.1	5,821.1	0.00	0.00	
13,500.0	89.00	90.00	7,108.4	969.9	5,921.1	5,921.1	0.00	0.00	
13,600.0	89.00	90.00	7,110.1	969.9	6,021.1	6,021.1	0.00	0.00	
13,700.0	89.00	90.00	7,111.8	969.9	6,121.1	6,121.1	0.00	0.00	
13,800.0	89.00	90.00	7,113.6	969.9	6,221.1	6,221.1	0.00	0.00	
13,900.0	89.00	90.00	7,115.3	969.9	6,321.1	6,321.1	0.00	0.00	
14,000.0	89.00	90.00	7,117.1	969.9	6,421.0	6,421.0	0.00	0.00	
14,100.0	89.00	90.00	7,118.8	969.9	6,521.0	6,521.0	0.00	0.00	
14,200.0	89.00	90.00	7,120.6	969.9	6,621.0	6,621.0	0.00	0.00	
14,244.2	89.00	90.00	7,121.3	969.9	6,665.2	6,665.2	0.00	0.00	TD at 14244.2 - Billings 3A-18H PBHL

## Planning Report

<b>Database:</b>	USA EDM 5000 Multi Users DB	<b>Local Co-ordinate Reference:</b>	Well Billings 3A-18H
<b>Company:</b>	EnCana Oil & Gas (USA) Inc	<b>TVD Reference:</b>	WELL @ 5159.0ft (Original Well Elev)
<b>Project:</b>	DJ Wattenberg	<b>MD Reference:</b>	WELL @ 5159.0ft (Original Well Elev)
<b>Site:</b>	S18-T3N-R68W (Billings)	<b>North Reference:</b>	True
<b>Well:</b>	Billings 3A-18H	<b>Survey Calculation Method:</b>	Minimum Curvature
<b>Wellbore:</b>	Hz		
<b>Design:</b>	Plan #1		

Targets									
Target Name									
- hit/miss target	Dip Angle	Dip Dir.	TVD	+N/-S	+E/-W	Northing	Easting	Latitude	Longitude
- Shape	(°)	(°)	(ft)	(ft)	(ft)	(ft)	(ft)		
Billings 3A-18H PBHL	0.00	0.00	7,121.3	969.9	6,665.2	1,325,282.37	3,131,647.65	40.225330	-105.028550
- plan hits target center									
- Point									

Formations						
Measured Depth	Vertical Depth	Name	Lithology	Dip	Dip Direction	
(ft)	(ft)			(°)	(°)	
3,966.0	3,880.0	Sussex		1.00	90.00	
4,190.1	4,097.0	Sussex Marker		1.00	90.00	
4,433.7	4,333.0	Shannon		1.00	90.00	
6,203.3	6,073.0	Teepee Buttes		1.00	90.00	
7,046.5	6,839.0	Sharon Springs		1.00	90.00	
7,166.9	6,908.0	Niobrara		1.00	90.00	
7,336.0	6,975.0	B Chalk		1.00	90.00	

Plan Annotations					
Measured Depth	Vertical Depth	Local Coordinates			
(ft)	(ft)	+N/-S	+E/-W	Comment	
(ft)	(ft)	(ft)	(ft)		
200.0	200.0	0.0	0.0	KOP @ 200'	
1,700.0	1,682.9	155.4	-118.2	EOB; Inc=15°	
4,900.0	4,773.9	814.7	-619.5	Start Drop -1.00	
6,400.0	6,256.8	970.1	-737.7	EOD; Inc=0°	
6,431.5	6,288.3	970.1	-737.7	Start Build 8.00	
7,544.0	7,004.4	970.1	-34.0	LP @ 7005' TVD; 89°	
14,244.2	7,121.3	969.9	6,665.2	TD at 14244.2	

# **EnCana Oil & Gas (USA) Inc**

**DJ Wattenberg**

**S18-T3N-R68W (Billings)**

**Billings 3A-18H**

**Hz**

**Plan #1**

## **Anticollision Report**

**09 January, 2013**

# Anticollision Report

<b>Company:</b>	EnCana Oil & Gas (USA) Inc	<b>Local Co-ordinate Reference:</b>	Well Billings 3A-18H
<b>Project:</b>	DJ Wattenberg	<b>TVD Reference:</b>	WELL @ 5159.0ft (Original Well Elev)
<b>Reference Site:</b>	S18-T3N-R68W (Billings)	<b>MD Reference:</b>	WELL @ 5159.0ft (Original Well Elev)
<b>Site Error:</b>	0.0ft	<b>North Reference:</b>	True
<b>Reference Well:</b>	Billings 3A-18H	<b>Survey Calculation Method:</b>	Minimum Curvature
<b>Well Error:</b>	0.0ft	<b>Output errors are at</b>	2.00 sigma
<b>Reference Wellbore</b>	Hz	<b>Database:</b>	USA EDM 5000 Multi Users DB
<b>Reference Design:</b>	Plan #1	<b>Offset TVD Reference:</b>	Offset Datum

<b>Reference</b>	Plan #1		
<b>Filter type:</b>	NO GLOBAL FILTER: Using user defined selection & filtering criteria		
<b>Interpolation Method:</b>	MD Interval 100.0ft	<b>Error Model:</b>	Systematic Ellipse
<b>Depth Range:</b>	Unlimited	<b>Scan Method:</b>	Closest Approach 3D
<b>Results Limited by:</b>	Maximum center-center distance of 500.0ft	<b>Error Surface:</b>	Elliptical Conic
<b>Warning Levels Evaluated at:</b>	2.00 Sigma		

<b>Survey Tool Program</b>	<b>Date</b>	1/9/2013		
<b>From (ft)</b>	<b>To (ft)</b>	<b>Survey (Wellbore)</b>	<b>Tool Name</b>	<b>Description</b>
0.0	14,244.2	Plan #1 (Hz)	MWD	Geolink MWD

<b>Summary</b>						
<b>Site Name</b>	<b>Reference Measured Depth (ft)</b>	<b>Offset Measured Depth (ft)</b>	<b>Distance Between Centres (ft)</b>	<b>Distance Between Ellipses (ft)</b>	<b>Separation Factor</b>	<b>Warning</b>
<b>Offset Well - Wellbore - Design</b>						
S18-T3N-R68W (Billings)						
Billings 2A-18H - Hz - Plan #1						Out of range
Billings 2B-18H - HZ - Plan #1						Out of range
Billings 2C-18H - HZ - Plan #1						Out of range
Billings 2D-18H - Hz - Plan #1						Out of range
Billings 2E-18H - HZ - Plan #1						Out of range
Billings 2F-18H - HZ - Plan #1						Out of range
Billings 2G-18H - Hz - Plan #1						Out of range
Billings 2H-18H - Hz - Plan #1	6,400.0	6,445.3	295.7	252.4	6.819	CC
Billings 2H-18H - Hz - Plan #1	14,244.7	14,384.5	304.1	-39.1	0.886	Level 1, ES, SF
Billings 3B-18H - Hz - Plan #1	200.0	199.0	10.9	10.3	16.787	CC, ES
Billings 3B-18H - Hz - Plan #1	14,244.7	14,381.6	398.3	93.9	1.308	Level 3, SF
Billings 3C-18H - Hz - Plan #1	200.0	199.0	21.9	21.2	33.574	CC, ES
Billings 3C-18H - Hz - Plan #1	800.0	799.7	42.2	39.4	15.059	SF
Billings 3D-18H - Hz - Plan #1	200.0	199.0	32.8	32.1	50.368	CC, ES
Billings 3D-18H - Hz - Plan #1	700.0	698.6	51.3	48.9	21.269	SF
Billings 3E-18H - Hz - Plan #1	200.0	199.0	40.1	39.4	61.553	CC, ES
Billings 3E-18H - Hz - Plan #1	700.0	697.3	61.4	58.9	25.298	SF
Billings 3F-18H - Hz - Plan #1	200.0	199.0	51.0	50.3	78.340	CC, ES
Billings 3F-18H - Hz - Plan #1	700.0	693.4	79.1	76.6	32.406	SF
Billings 3G-18H - Hz - Plan #1	200.0	200.0	61.9	61.3	94.873	CC, ES
Billings 3G-18H - Hz - Plan #1	600.0	591.4	86.0	83.9	41.530	SF
Billings 3H-18H - Hz - Plan #1	200.0	199.0	72.9	72.2	111.914	CC, ES
Billings 3H-18H - Hz - Plan #1	700.0	681.7	126.7	124.2	51.526	SF



# Anticollision Report

<b>Company:</b>	EnCana Oil & Gas (USA) Inc	<b>Local Co-ordinate Reference:</b>	Well Billings 3A-18H
<b>Project:</b>	DJ Wattenberg	<b>TVD Reference:</b>	WELL @ 5159.0ft (Original Well Elev)
<b>Reference Site:</b>	S18-T3N-R68W (Billings)	<b>MD Reference:</b>	WELL @ 5159.0ft (Original Well Elev)
<b>Site Error:</b>	0.0ft	<b>North Reference:</b>	True
<b>Reference Well:</b>	Billings 3A-18H	<b>Survey Calculation Method:</b>	Minimum Curvature
<b>Well Error:</b>	0.0ft	<b>Output errors are at</b>	2.00 sigma
<b>Reference Wellbore</b>	Hz	<b>Database:</b>	USA EDM 5000 Multi Users DB
<b>Reference Design:</b>	Plan #1	<b>Offset TVD Reference:</b>	Offset Datum

Offset Design S18-T3N-R68W (Billings) - Billings 2H-18H - Hz - Plan #1												Offset Site Error:	0.0 ft
Survey Program: O-MWD												Offset Well Error:	0.0 ft
Reference		Offset		Semi Major Axis		Distance							
Measured Depth (ft)	Vertical Depth (ft)	Measured Depth (ft)	Vertical Depth (ft)	Reference (ft)	Offset (ft)	Highside Toolface (°)	Offset Wellbore Centre +N/-S (ft)	+E/-W (ft)	Between Centres (ft)	Between Ellipses (ft)	Total Uncertainty Axis	Separation Factor	Warning
5,100.0	4,967.9	5,225.6	5,090.4	21.1	21.4	25.61	1,304.6	-753.6	469.0	445.4	23.60	19.875	
5,200.0	5,065.6	5,308.1	5,171.9	21.5	21.6	25.79	1,292.2	-756.3	435.8	411.8	24.05	18.121	
5,300.0	5,163.6	5,392.4	5,255.6	21.9	21.8	26.09	1,281.9	-758.5	406.7	382.2	24.48	16.609	
5,400.0	5,261.9	5,478.4	5,341.1	22.2	22.0	26.52	1,273.9	-760.3	381.7	356.8	24.90	15.327	
5,500.0	5,360.5	5,565.7	5,428.2	22.5	22.1	27.10	1,268.3	-761.5	361.0	335.7	25.31	14.264	
5,600.0	5,459.4	5,654.1	5,516.6	22.8	22.2	27.82	1,265.3	-762.1	344.6	318.9	25.70	13.411	
5,700.0	5,558.6	5,747.1	5,609.6	23.1	22.3	28.71	1,264.8	-762.2	332.6	306.5	26.09	12.746	
5,800.0	5,657.9	5,846.4	5,708.9	23.3	22.4	29.63	1,264.8	-762.2	322.7	296.2	26.49	12.179	
5,900.0	5,757.4	5,946.0	5,808.4	23.5	22.4	30.45	1,264.8	-762.2	314.4	287.5	26.88	11.693	
6,000.0	5,857.1	6,045.6	5,908.1	23.7	22.5	31.15	1,264.8	-762.2	307.6	280.3	27.26	11.283	
6,100.0	5,956.9	6,145.5	6,007.9	23.9	22.6	31.72	1,264.8	-762.2	302.4	274.8	27.63	10.946	
6,200.0	6,056.9	6,245.4	6,107.9	24.0	22.7	32.14	1,264.8	-762.2	298.7	270.7	27.97	10.681	
6,300.0	6,156.8	6,345.3	6,207.8	24.1	22.8	32.40	1,264.8	-762.2	296.5	268.2	28.28	10.483	
6,400.0	6,256.8	6,445.3	6,307.8	24.2	22.9	-4.76	1,264.8	-762.2	295.7	252.4	43.37	6.819 CC	
6,400.4	6,257.2	6,445.8	6,308.2	24.2	22.9	-94.76	1,264.8	-762.2	295.7	267.2	28.57	10.351	
6,500.0	6,356.7	6,545.2	6,407.7	24.2	23.0	-95.37	1,264.8	-762.2	296.0	267.3	28.74	10.299	
6,600.0	6,455.3	6,649.3	6,511.5	24.1	23.0	-97.27	1,264.8	-755.4	297.1	268.5	28.59	10.394	
6,700.0	6,550.6	6,755.2	6,614.9	23.9	23.0	-99.04	1,264.8	-733.1	298.5	270.3	28.18	10.590	
6,800.0	6,640.8	6,862.5	6,715.2	23.6	23.0	-100.62	1,264.8	-695.2	299.9	272.3	27.57	10.876	
6,900.0	6,724.1	6,971.2	6,809.9	23.2	23.0	-101.98	1,264.8	-641.9	301.3	274.4	26.86	11.216	
7,000.0	6,799.0	7,081.1	6,896.3	22.7	23.1	-103.08	1,264.8	-574.2	302.6	276.4	26.22	11.539	
7,100.0	6,863.9	7,192.0	6,971.9	22.3	23.2	-103.91	1,264.8	-493.3	303.7	277.7	25.93	11.711	
7,200.0	6,917.6	7,303.6	7,034.6	21.9	23.4	-104.45	1,264.8	-401.1	304.4	278.1	26.23	11.605	
7,300.0	6,959.1	7,415.6	7,082.3	21.7	23.8	-104.68	1,264.8	-299.9	304.7	277.3	27.38	11.126	
7,400.0	6,987.5	7,527.7	7,113.7	21.5	24.5	-104.61	1,264.8	-192.4	304.6	275.1	29.44	10.345	
7,500.0	7,002.3	7,639.5	7,127.9	21.5	25.4	-104.22	1,264.8	-81.6	304.1	271.8	32.29	9.416	
7,599.9	7,007.1	7,741.7	7,130.1	21.8	26.5	-103.72	1,264.8	20.6	303.4	268.0	35.39	8.574	
7,600.0	7,005.4	7,741.9	7,130.1	21.8	26.5	-104.04	1,264.8	20.7	303.8	268.5	35.36	8.594	
7,700.0	7,007.1	7,841.9	7,131.8	22.3	27.8	-104.04	1,264.8	120.7	303.8	265.2	38.61	7.869	
7,800.0	7,008.9	7,941.9	7,133.6	23.2	29.2	-104.04	1,264.8	220.7	303.8	261.7	42.17	7.205	
7,900.0	7,010.6	8,041.9	7,135.3	24.4	30.9	-104.04	1,264.8	320.7	303.8	257.9	45.97	6.610	
8,000.0	7,012.4	8,141.9	7,137.1	25.9	32.6	-104.04	1,264.8	420.7	303.8	253.9	49.94	6.084	
8,100.0	7,014.1	8,241.9	7,138.8	27.6	34.5	-104.04	1,264.8	520.7	303.9	249.8	54.06	5.621	
8,200.0	7,015.9	8,341.9	7,140.5	29.5	36.5	-104.04	1,264.8	620.6	303.9	245.6	58.28	5.214	
8,300.0	7,017.6	8,441.9	7,142.3	31.4	38.5	-104.04	1,264.8	720.6	303.9	241.3	62.59	4.855	
8,400.0	7,019.3	8,541.9	7,144.0	33.5	40.6	-104.04	1,264.8	820.6	303.9	236.9	66.97	4.537	
8,500.0	7,021.1	8,641.9	7,145.8	35.6	42.8	-104.04	1,264.8	920.6	303.9	232.5	71.40	4.256	
8,600.0	7,022.8	8,741.9	7,147.5	37.7	45.0	-104.04	1,264.8	1,020.6	303.9	228.0	75.89	4.004	
8,700.0	7,024.6	8,841.9	7,149.3	39.9	47.2	-104.04	1,264.8	1,120.6	303.9	223.5	80.40	3.779	
8,800.0	7,026.3	8,941.9	7,151.0	42.1	49.5	-104.04	1,264.8	1,220.5	303.9	218.9	84.95	3.577	
8,900.0	7,028.1	9,041.9	7,152.8	44.3	51.7	-104.04	1,264.8	1,320.5	303.9	214.4	89.53	3.394	
9,000.0	7,029.8	9,141.9	7,154.5	46.6	54.0	-104.04	1,264.8	1,420.5	303.9	209.8	94.13	3.228	
9,100.0	7,031.6	9,241.9	7,156.2	48.9	56.3	-104.03	1,264.8	1,520.5	303.9	205.1	98.75	3.077	
9,200.0	7,033.3	9,341.9	7,158.0	51.2	58.7	-104.03	1,264.9	1,620.5	303.9	200.5	103.39	2.939	
9,300.0	7,035.1	9,441.9	7,159.7	53.5	61.0	-104.03	1,264.9	1,720.5	303.9	195.9	108.04	2.813	
9,400.0	7,036.8	9,541.9	7,161.5	55.8	63.3	-104.03	1,264.9	1,820.5	303.9	191.2	112.70	2.697	
9,500.0	7,038.5	9,641.9	7,163.2	58.2	65.7	-104.03	1,264.9	1,920.4	303.9	186.5	117.38	2.589	
9,600.0	7,040.3	9,741.9	7,165.0	60.5	68.1	-104.03	1,264.9	2,020.4	303.9	181.9	122.06	2.490	
9,700.0	7,042.0	9,841.9	7,166.7	62.9	70.4	-104.03	1,264.9	2,120.4	303.9	177.2	126.76	2.398	
9,800.0	7,043.8	9,941.9	7,168.5	65.3	72.8	-104.03	1,264.9	2,220.4	303.9	172.5	131.46	2.312	
9,900.0	7,045.5	10,041.9	7,170.2	67.6	75.2	-104.03	1,264.9	2,320.4	303.9	167.8	136.17	2.232	
10,000.0	7,047.3	10,141.9	7,172.0	70.0	77.6	-104.03	1,264.9	2,420.4	303.9	163.1	140.88	2.157	

CC - Min centre to center distance or convergent point, SF - min separation factor, ES - min ellipse separation

# Anticollision Report

<b>Company:</b>	EnCana Oil & Gas (USA) Inc	<b>Local Co-ordinate Reference:</b>	Well Billings 3A-18H
<b>Project:</b>	DJ Wattenberg	<b>TVD Reference:</b>	WELL @ 5159.0ft (Original Well Elev)
<b>Reference Site:</b>	S18-T3N-R68W (Billings)	<b>MD Reference:</b>	WELL @ 5159.0ft (Original Well Elev)
<b>Site Error:</b>	0.0ft	<b>North Reference:</b>	True
<b>Reference Well:</b>	Billings 3A-18H	<b>Survey Calculation Method:</b>	Minimum Curvature
<b>Well Error:</b>	0.0ft	<b>Output errors are at</b>	2.00 sigma
<b>Reference Wellbore</b>	Hz	<b>Database:</b>	USA EDM 5000 Multi Users DB
<b>Reference Design:</b>	Plan #1	<b>Offset TVD Reference:</b>	Offset Datum

Offset Design S18-T3N-R68W (Billings) - Billings 2H-18H - Hz - Plan #1													Offset Site Error:	0.0 ft
Survey Program: 0-MWD													Offset Well Error:	0.0 ft
Reference		Offset		Semi Major Axis			Distance				Total		Warning	
Measured Depth (ft)	Vertical Depth (ft)	Measured Depth (ft)	Vertical Depth (ft)	Reference (ft)	Offset (ft)	Highside Toolface (°)	Offset Wellbore Centre +N/-S (ft)	+E/-W (ft)	Between Centres (ft)	Between Ellipses (ft)	Uncertainty Axis	Separation Factor		
10,100.0	7,049.0	10,241.9	7,173.7	72.4	80.0	-104.03	1,264.9	2,520.3	303.9	158.3	145.60	2.087		
10,200.0	7,050.8	10,341.9	7,175.4	74.8	82.4	-104.03	1,264.9	2,620.3	304.0	153.6	150.33	2.022		
10,300.0	7,052.5	10,441.9	7,177.2	77.2	84.8	-104.03	1,264.9	2,720.3	304.0	148.9	155.06	1.960		
10,400.0	7,054.2	10,541.9	7,178.9	79.6	87.2	-104.03	1,264.9	2,820.3	304.0	144.2	159.80	1.902		
10,500.0	7,056.0	10,641.9	7,180.7	82.0	89.6	-104.03	1,264.9	2,920.3	304.0	139.4	164.53	1.847		
10,600.0	7,057.7	10,741.9	7,182.4	84.4	92.1	-104.03	1,264.9	3,020.3	304.0	134.7	169.28	1.796		
10,700.0	7,059.5	10,841.9	7,184.2	86.8	94.5	-104.03	1,264.9	3,120.3	304.0	130.0	174.02	1.747		
10,800.0	7,061.2	10,941.9	7,185.9	89.2	96.9	-104.03	1,264.9	3,220.2	304.0	125.2	178.77	1.700		
10,900.0	7,063.0	11,041.9	7,187.7	91.7	99.3	-104.03	1,264.9	3,320.2	304.0	120.5	183.52	1.656		
11,000.0	7,064.7	11,141.9	7,189.4	94.1	101.8	-104.03	1,264.9	3,420.2	304.0	115.7	188.28	1.615		
11,100.0	7,066.5	11,241.9	7,191.2	96.5	104.2	-104.03	1,264.9	3,520.2	304.0	111.0	193.03	1.575		
11,200.0	7,068.2	11,341.9	7,192.9	98.9	106.6	-104.03	1,264.9	3,620.2	304.0	106.2	197.79	1.537		
11,300.0	7,070.0	11,441.9	7,194.6	101.4	109.1	-104.03	1,264.9	3,720.2	304.0	101.4	202.55	1.501		
11,400.0	7,071.7	11,541.9	7,196.4	103.8	111.5	-104.03	1,264.9	3,820.1	304.0	96.7	207.31	1.466	Level 3	
11,500.0	7,073.4	11,641.9	7,198.1	106.2	113.9	-104.03	1,264.9	3,920.1	304.0	91.9	212.08	1.433	Level 3	
11,600.0	7,075.2	11,741.9	7,199.9	108.7	116.4	-104.03	1,264.9	4,020.1	304.0	87.2	216.84	1.402	Level 3	
11,700.0	7,076.9	11,841.9	7,201.6	111.1	118.8	-104.03	1,264.9	4,120.1	304.0	82.4	221.61	1.372	Level 3	
11,800.0	7,078.7	11,941.9	7,203.4	113.5	121.3	-104.03	1,264.9	4,220.1	304.0	77.6	226.38	1.343	Level 3	
11,900.0	7,080.4	12,041.9	7,205.1	116.0	123.7	-104.03	1,264.9	4,320.1	304.0	72.9	231.15	1.315	Level 3	
12,000.0	7,082.2	12,141.9	7,206.9	118.4	126.1	-104.03	1,264.9	4,420.1	304.0	68.1	235.92	1.289	Level 3	
12,100.0	7,083.9	12,241.9	7,208.6	120.9	128.6	-104.03	1,264.9	4,520.0	304.0	63.3	240.69	1.263	Level 3	
12,200.0	7,085.7	12,341.9	7,210.4	123.3	131.0	-104.03	1,264.9	4,620.0	304.0	58.6	245.47	1.239	Level 2	
12,300.0	7,087.4	12,441.9	7,212.1	125.8	133.5	-104.03	1,264.9	4,720.0	304.0	53.8	250.24	1.215	Level 2	
12,400.0	7,089.2	12,541.9	7,213.8	128.2	135.9	-104.03	1,264.9	4,820.0	304.1	49.0	255.02	1.192	Level 2	
12,500.0	7,090.9	12,641.9	7,215.6	130.6	138.4	-104.03	1,264.9	4,920.0	304.1	44.3	259.80	1.170	Level 2	
12,600.0	7,092.6	12,741.9	7,217.3	133.1	140.8	-104.03	1,264.9	5,020.0	304.1	39.5	264.57	1.149	Level 2	
12,700.0	7,094.4	12,841.9	7,219.1	135.5	143.3	-104.03	1,264.9	5,120.0	304.1	34.7	269.35	1.129	Level 2	
12,800.0	7,096.1	12,941.9	7,220.8	138.0	145.7	-104.03	1,264.9	5,219.9	304.1	29.9	274.13	1.109	Level 2	
12,900.0	7,097.9	13,041.9	7,222.6	140.4	148.2	-104.03	1,264.9	5,319.9	304.1	25.2	278.91	1.090	Level 2	
13,000.0	7,099.6	13,141.9	7,224.3	142.9	150.6	-104.03	1,264.9	5,419.9	304.1	20.4	283.69	1.072	Level 2	
13,100.0	7,101.4	13,241.9	7,226.1	145.3	153.1	-104.03	1,264.9	5,519.9	304.1	15.6	288.47	1.054	Level 2	
13,200.0	7,103.1	13,341.9	7,227.8	147.8	155.6	-104.03	1,264.9	5,619.9	304.1	10.8	293.26	1.037	Level 2	
13,300.0	7,104.9	13,441.9	7,229.5	150.3	158.0	-104.03	1,265.0	5,719.9	304.1	6.1	298.04	1.020	Level 2	
13,400.0	7,106.6	13,541.9	7,231.3	152.7	160.5	-104.03	1,265.0	5,819.8	304.1	1.3	302.82	1.004	Level 2	
13,500.0	7,108.4	13,641.9	7,233.0	155.2	162.9	-104.03	1,265.0	5,919.8	304.1	-3.5	307.61	0.989	Level 1	
13,600.0	7,110.1	13,741.9	7,234.8	157.6	165.4	-104.03	1,265.0	6,019.8	304.1	-8.3	312.39	0.973	Level 1	
13,700.0	7,111.8	13,841.9	7,236.5	160.1	167.8	-104.02	1,265.0	6,119.8	304.1	-13.1	317.18	0.959	Level 1	
13,800.0	7,113.6	13,941.9	7,238.3	162.5	170.3	-104.02	1,265.0	6,219.8	304.1	-17.8	321.96	0.945	Level 1	
13,900.0	7,115.3	14,041.9	7,240.0	165.0	172.8	-104.02	1,265.0	6,319.8	304.1	-22.6	326.75	0.931	Level 1	
14,000.0	7,117.1	14,141.9	7,241.8	167.4	175.2	-104.02	1,265.0	6,419.8	304.1	-27.4	331.53	0.917	Level 1	
14,100.0	7,118.8	14,241.9	7,243.5	169.9	177.7	-104.02	1,265.0	6,519.7	304.1	-32.2	336.32	0.904	Level 1	
14,200.0	7,120.6	14,341.9	7,245.3	172.4	180.1	-104.02	1,265.0	6,619.7	304.1	-37.0	341.11	0.892	Level 1	
14,223.4	7,121.0	14,365.2	7,245.7	172.9	180.7	-104.02	1,265.0	6,643.1	304.1	-38.1	342.23	0.889	Level 1	
14,244.7	7,121.3	14,384.5	7,246.0	173.5	181.2	-104.02	1,265.0	6,662.3	304.1	-39.1	343.20	0.886	Level 1, ES, SF	

# Anticollision Report

<b>Company:</b>	EnCana Oil & Gas (USA) Inc	<b>Local Co-ordinate Reference:</b>	Well Billings 3A-18H
<b>Project:</b>	DJ Wattenberg	<b>TVD Reference:</b>	WELL @ 5159.0ft (Original Well Elev)
<b>Reference Site:</b>	S18-T3N-R68W (Billings)	<b>MD Reference:</b>	WELL @ 5159.0ft (Original Well Elev)
<b>Site Error:</b>	0.0ft	<b>North Reference:</b>	True
<b>Reference Well:</b>	Billings 3A-18H	<b>Survey Calculation Method:</b>	Minimum Curvature
<b>Well Error:</b>	0.0ft	<b>Output errors are at</b>	2.00 sigma
<b>Reference Wellbore</b>	Hz	<b>Database:</b>	USA EDM 5000 Multi Users DB
<b>Reference Design:</b>	Plan #1	<b>Offset TVD Reference:</b>	Offset Datum

Offset Design S18-T3N-R68W (Billings) - Billings 3B-18H - Hz - Plan #1													Offset Site Error:	0.0 ft
Survey Program: 0-MWD													Offset Well Error:	0.0 ft
Reference		Offset		Semi Major Axis		Distance		Total		Separation		Warning		
Measured Depth (ft)	Vertical Depth (ft)	Measured Depth (ft)	Vertical Depth (ft)	Reference (ft)	Offset (ft)	Highside Toolface (°)	Offset Wellbore Centre +N/-S (ft)	+E/-W (ft)	Between Centres (ft)	Between Ellipses (ft)	Uncertainty Axis			
0.0	0.0	0.0	0.0	0.0	0.0	-180.00	-10.9	0.0	11.0					
100.0	100.0	99.0	99.0	0.2	0.2	-180.00	-10.9	0.0	10.9	10.6	0.30	36.167		
200.0	200.0	199.0	199.0	0.3	0.3	-180.00	-10.9	0.0	10.9	10.3	0.65	16.787 CC, ES		
300.0	300.0	299.0	299.0	0.5	0.5	-145.35	-10.9	0.0	11.6	10.6	1.00	11.632		
400.0	400.0	399.1	399.1	0.7	0.7	-149.09	-10.4	-0.7	13.2	11.9	1.35	9.794		
500.0	499.9	499.3	499.3	0.9	0.9	-150.83	-8.7	-2.6	15.1	13.4	1.70	8.847		
600.0	599.7	599.5	599.4	1.1	1.0	-151.15	-5.8	-6.0	17.2	15.1	2.06	8.310		
700.0	699.4	699.7	699.4	1.3	1.2	-150.48	-1.9	-10.6	19.4	17.0	2.43	7.987		
800.0	798.9	799.9	799.3	1.5	1.4	-149.16	3.2	-16.6	21.9	19.1	2.82	7.787		
900.0	898.3	900.2	899.1	1.8	1.7	-147.43	9.5	-23.9	24.7	21.5	3.22	7.656		
1,000.0	997.4	1,000.5	998.7	2.0	1.9	-145.43	16.8	-32.5	27.7	24.0	3.66	7.564		
1,100.0	1,096.3	1,100.7	1,098.1	2.3	2.2	-143.31	25.4	-42.5	30.9	26.8	4.13	7.490		
1,200.0	1,194.9	1,201.0	1,197.3	2.7	2.5	-141.15	35.0	-53.8	34.5	29.8	4.65	7.422		
1,300.0	1,293.3	1,301.4	1,296.3	3.0	2.8	-139.00	45.8	-66.4	38.3	33.1	5.21	7.354		
1,400.0	1,391.2	1,401.7	1,394.9	3.4	3.2	-136.91	57.6	-80.3	42.5	36.7	5.84	7.283		
1,500.0	1,488.9	1,502.0	1,493.2	3.8	3.5	-134.89	70.7	-95.5	47.0	40.5	6.52	7.209		
1,600.0	1,586.1	1,601.8	1,590.9	4.2	3.9	-133.84	84.1	-111.3	52.3	45.1	7.21	7.252		
1,700.0	1,682.9	1,701.6	1,688.5	4.7	4.3	-134.20	97.6	-127.1	58.8	51.0	7.88	7.472		
1,800.0	1,779.5	1,801.4	1,786.0	5.2	4.7	-135.07	111.1	-142.9	66.0	57.5	8.51	7.750		
1,900.0	1,876.1	1,901.1	1,883.6	5.6	5.1	-135.78	124.5	-158.6	73.1	64.0	9.15	7.988		
2,000.0	1,972.7	2,000.8	1,981.1	6.1	5.5	-136.35	138.0	-174.4	80.3	70.5	9.80	8.194		
2,100.0	2,069.3	2,100.6	2,078.7	6.6	5.9	-136.83	151.5	-190.2	87.5	77.0	10.44	8.374		
2,200.0	2,165.9	2,200.3	2,176.3	7.1	6.3	-137.24	164.9	-205.9	94.6	83.5	11.09	8.532		
2,300.0	2,262.5	2,300.1	2,273.8	7.5	6.6	-137.59	178.4	-221.7	101.8	90.1	11.74	8.672		
2,400.0	2,359.1	2,399.8	2,371.4	8.0	7.0	-137.90	191.9	-237.5	109.0	96.6	12.39	8.797		
2,500.0	2,455.7	2,499.5	2,468.9	8.5	7.4	-138.17	205.4	-253.2	116.2	103.1	13.04	8.909		
2,600.0	2,552.3	2,599.3	2,566.5	9.0	7.8	-138.40	218.8	-269.0	123.3	109.7	13.69	9.010		
2,700.0	2,648.8	2,699.0	2,664.1	9.5	8.2	-138.61	232.3	-284.8	130.5	116.2	14.34	9.101		
2,800.0	2,745.4	2,798.8	2,761.6	10.0	8.6	-138.80	245.8	-300.5	137.7	122.7	14.99	9.184		
2,900.0	2,842.0	2,898.5	2,859.2	10.4	9.0	-138.97	259.2	-316.3	144.9	129.3	15.65	9.260		
3,000.0	2,938.6	2,998.2	2,956.8	10.9	9.4	-139.13	272.7	-332.1	152.1	135.8	16.30	9.330		
3,100.0	3,035.2	3,098.0	3,054.3	11.4	9.9	-139.27	286.2	-347.8	159.3	142.3	16.96	9.394		
3,200.0	3,131.8	3,197.7	3,151.9	11.9	10.3	-139.39	299.6	-363.6	166.5	148.9	17.61	9.453		
3,300.0	3,228.4	3,297.5	3,249.4	12.4	10.7	-139.51	313.1	-379.4	173.7	155.4	18.27	9.508		
3,400.0	3,325.0	3,397.2	3,347.0	12.9	11.1	-139.62	326.6	-395.2	180.9	161.9	18.92	9.559		
3,500.0	3,421.6	3,496.9	3,444.6	13.3	11.5	-139.72	340.0	-410.9	188.1	168.5	19.58	9.607		
3,600.0	3,518.2	3,596.7	3,542.1	13.8	11.9	-139.81	353.5	-426.7	195.2	175.0	20.23	9.651		
3,700.0	3,614.8	3,696.4	3,639.7	14.3	12.3	-139.89	367.0	-442.5	202.4	181.6	20.89	9.692		
3,800.0	3,711.4	3,796.2	3,737.2	14.8	12.7	-139.97	380.4	-458.2	209.6	188.1	21.54	9.731		
3,900.0	3,808.0	3,895.9	3,834.8	15.3	13.1	-140.05	393.9	-474.0	216.8	194.6	22.20	9.767		
4,000.0	3,904.6	3,995.7	3,932.4	15.8	13.5	-140.12	407.4	-489.8	224.0	201.2	22.86	9.802		
4,100.0	4,001.1	4,095.4	4,029.9	16.3	13.9	-140.18	420.8	-505.5	231.2	207.7	23.51	9.834		
4,200.0	4,097.7	4,195.1	4,127.5	16.8	14.3	-140.25	434.3	-521.3	238.4	214.3	24.17	9.865		
4,300.0	4,194.3	4,294.9	4,225.0	17.2	14.7	-140.30	447.8	-537.1	245.6	220.8	24.83	9.893		
4,400.0	4,290.9	4,394.6	4,322.6	17.7	15.1	-140.36	461.2	-552.8	252.8	227.3	25.48	9.921		
4,500.0	4,387.5	4,494.4	4,420.2	18.2	15.5	-140.41	474.7	-568.6	260.0	233.9	26.14	9.947		
4,600.0	4,484.1	4,594.1	4,517.7	18.7	15.9	-140.46	488.2	-584.4	267.2	240.4	26.80	9.971		
4,700.0	4,580.7	4,693.8	4,615.3	19.2	16.3	-140.50	501.6	-600.1	274.4	246.9	27.45	9.995		
4,800.0	4,677.3	4,793.6	4,712.8	19.7	16.7	-140.55	515.1	-615.9	281.6	253.5	28.11	10.017		
4,900.0	4,773.9	4,893.3	4,810.4	20.2	17.1	-140.59	528.6	-631.7	288.8	260.0	28.77	10.038		
5,000.0	4,870.7	4,992.2	4,907.2	20.6	17.5	-140.57	541.9	-647.3	295.4	265.9	29.44	10.033		
5,100.0	4,967.9	5,088.9	5,002.0	21.1	17.9	-140.53	554.1	-661.6	301.4	271.3	30.07	10.022		

CC - Min centre to center distance or convergent point, SF - min separation factor, ES - min ellipse separation

# Anticollision Report

<b>Company:</b>	EnCana Oil & Gas (USA) Inc	<b>Local Co-ordinate Reference:</b>	Well Billings 3A-18H
<b>Project:</b>	DJ Wattenberg	<b>TVD Reference:</b>	WELL @ 5159.0ft (Original Well Elev)
<b>Reference Site:</b>	S18-T3N-R68W (Billings)	<b>MD Reference:</b>	WELL @ 5159.0ft (Original Well Elev)
<b>Site Error:</b>	0.0ft	<b>North Reference:</b>	True
<b>Reference Well:</b>	Billings 3A-18H	<b>Survey Calculation Method:</b>	Minimum Curvature
<b>Well Error:</b>	0.0ft	<b>Output errors are at</b>	2.00 sigma
<b>Reference Wellbore</b>	Hz	<b>Database:</b>	USA EDM 5000 Multi Users DB
<b>Reference Design:</b>	Plan #1	<b>Offset TVD Reference:</b>	Offset Datum

Offset Design S18-T3N-R68W (Billings) - Billings 3B-18H - Hz - Plan #1													Offset Site Error:	0.0 ft
Survey Program: O-MWD													Offset Well Error:	0.0 ft
Reference		Offset		Semi Major Axis			Distance				Total Uncertainty Axis	Separation Factor	Warning	
Measured Depth (ft)	Vertical Depth (ft)	Measured Depth (ft)	Vertical Depth (ft)	Reference (ft)	Offset (ft)	Highside Toolface (°)	Offset Wellbore Centre +N/-S (ft)	+E/-W (ft)	Between Centres (ft)	Between Ellipses (ft)				
5,200.0	5,065.6	5,185.5	5,097.1	21.5	18.2	-140.53	565.3	-674.7	307.1	276.4	30.66	10.017		
5,300.0	5,163.6	5,282.1	5,192.4	21.9	18.5	-140.57	575.5	-686.6	312.5	281.3	31.19	10.018		
5,400.0	5,261.9	5,378.7	5,287.9	22.2	18.8	-140.64	584.6	-697.3	317.6	285.9	31.68	10.026		
5,500.0	5,360.5	5,475.2	5,383.7	22.5	19.1	-140.74	592.6	-706.7	322.4	290.3	32.12	10.038		
5,600.0	5,459.4	5,571.7	5,479.5	22.8	19.3	-140.88	599.6	-714.9	326.9	294.4	32.51	10.057		
5,700.0	5,558.6	5,668.1	5,575.5	23.1	19.5	-141.04	605.6	-721.8	331.1	298.3	32.85	10.079		
5,800.0	5,657.9	5,764.5	5,671.6	23.3	19.7	-141.23	610.5	-727.6	335.0	301.9	33.15	10.107		
5,900.0	5,757.4	5,860.9	5,767.8	23.5	19.9	-141.46	614.3	-732.1	338.7	305.3	33.40	10.139		
6,000.0	5,857.1	5,957.2	5,864.0	23.7	20.0	-141.71	617.1	-735.4	342.0	308.4	33.61	10.175		
6,100.0	5,956.9	6,053.5	5,960.2	23.9	20.1	-141.99	618.9	-737.4	345.0	311.2	33.77	10.216		
6,200.0	6,056.9	6,149.7	6,056.4	24.0	20.2	-142.30	619.6	-738.2	347.7	313.9	33.90	10.259		
6,300.0	6,156.8	6,249.0	6,155.8	24.1	20.3	-142.57	619.6	-738.2	349.8	315.8	34.02	10.283		
6,400.0	6,256.8	6,349.0	6,255.8	24.2	20.4	-179.91	619.6	-738.2	350.5	314.5	36.02	9.730		
6,439.6	6,296.4	6,388.6	6,295.4	24.2	20.4	90.21	619.6	-738.2	350.5	316.2	34.30	10.218		
6,500.0	6,356.7	6,448.9	6,355.7	24.2	20.5	90.62	619.6	-738.2	350.5	316.0	34.55	10.145		
6,600.0	6,455.3	6,547.5	6,454.3	24.1	20.6	93.22	619.6	-738.2	351.1	315.7	35.44	9.908		
6,700.0	6,550.6	6,647.9	6,554.5	23.9	20.6	97.28	619.6	-734.1	353.6	317.2	36.39	9.716		
6,800.0	6,640.8	6,753.2	6,658.0	23.6	20.5	101.32	619.6	-715.2	357.9	321.3	36.63	9.772		
6,900.0	6,724.1	6,863.1	6,761.9	23.2	20.1	105.13	619.6	-679.5	363.9	327.8	36.05	10.093		
7,000.0	6,799.0	6,977.9	6,863.2	22.7	19.7	108.62	619.6	-625.8	370.8	336.1	34.70	10.686		
7,100.0	6,863.9	7,097.7	6,958.3	22.3	19.1	111.70	619.6	-553.2	378.3	345.5	32.77	11.543		
7,200.0	6,917.6	7,222.5	7,043.1	21.9	18.4	114.29	619.6	-461.9	385.4	354.8	30.59	12.597		
7,300.0	6,959.1	7,351.8	7,112.9	21.7	17.9	116.31	619.6	-353.3	391.6	362.8	28.72	13.635		
7,400.0	6,987.5	7,484.7	7,163.1	21.5	17.4	117.71	619.6	-230.4	396.1	368.3	27.81	14.241		
7,500.0	7,002.3	7,620.0	7,190.1	21.5	17.3	118.44	619.6	-98.0	398.6	370.1	28.42	14.025		
7,600.0	7,005.4	7,736.9	7,194.9	21.8	17.8	118.54	619.6	18.7	398.9	368.6	30.31	13.158		
7,700.0	7,007.1	7,836.9	7,196.7	22.3	18.8	118.54	619.6	118.7	398.9	366.3	32.59	12.240		
7,800.0	7,008.9	7,936.9	7,198.4	23.2	20.3	118.54	619.7	218.7	398.9	363.6	35.25	11.314		
7,900.0	7,010.6	8,036.9	7,200.2	24.4	22.0	118.54	619.7	318.7	398.9	360.6	38.23	10.433		
8,000.0	7,012.4	8,136.9	7,201.9	25.9	23.9	118.54	619.7	418.7	398.9	357.4	41.45	9.622		
8,100.0	7,014.1	8,236.9	7,203.7	27.6	25.8	118.54	619.7	518.6	398.8	354.0	44.86	8.890		
8,200.0	7,015.9	8,336.9	7,205.4	29.5	27.8	118.54	619.7	618.6	398.8	350.4	48.43	8.236		
8,300.0	7,017.6	8,436.9	7,207.2	31.4	29.9	118.55	619.7	718.6	398.8	346.7	52.11	7.654		
8,400.0	7,019.3	8,536.9	7,208.9	33.5	32.1	118.55	619.7	818.6	398.8	342.9	55.89	7.136		
8,500.0	7,021.1	8,636.9	7,210.6	35.6	34.2	118.55	619.7	918.6	398.8	339.1	59.74	6.675		
8,600.0	7,022.8	8,736.9	7,212.4	37.7	36.4	118.55	619.7	1,018.6	398.8	335.1	63.66	6.264		
8,700.0	7,024.6	8,836.9	7,214.1	39.9	38.7	118.55	619.7	1,118.6	398.8	331.2	67.64	5.896		
8,800.0	7,026.3	8,936.9	7,215.9	42.1	41.0	118.55	619.7	1,218.5	398.8	327.1	71.65	5.565		
8,900.0	7,028.1	9,036.9	7,217.6	44.3	43.3	118.55	619.7	1,318.5	398.8	323.1	75.71	5.267		
9,000.0	7,029.8	9,136.9	7,219.4	46.6	45.6	118.55	619.8	1,418.5	398.8	319.0	79.79	4.998		
9,100.0	7,031.6	9,236.9	7,221.1	48.9	47.9	118.55	619.8	1,518.5	398.8	314.9	83.90	4.753		
9,200.0	7,033.3	9,336.9	7,222.9	51.2	50.2	118.55	619.8	1,618.5	398.7	310.7	88.04	4.529		
9,300.0	7,035.1	9,436.9	7,224.6	53.5	52.6	118.55	619.8	1,718.5	398.7	306.5	92.19	4.325		
9,400.0	7,036.8	9,536.9	7,226.3	55.8	54.9	118.55	619.8	1,818.5	398.7	302.4	96.36	4.138		
9,500.0	7,038.5	9,636.9	7,228.1	58.2	57.3	118.55	619.8	1,918.4	398.7	298.2	100.55	3.965		
9,600.0	7,040.3	9,736.9	7,229.8	60.5	59.7	118.55	619.8	2,018.4	398.7	294.0	104.75	3.806		
9,700.0	7,042.0	9,836.9	7,231.6	62.9	62.1	118.56	619.8	2,118.4	398.7	289.7	108.96	3.659		
9,800.0	7,043.8	9,936.9	7,233.3	65.3	64.5	118.56	619.8	2,218.4	398.7	285.5	113.18	3.523		
9,900.0	7,045.5	10,036.9	7,235.1	67.6	66.9	118.56	619.8	2,318.4	398.7	281.3	117.41	3.396		
10,000.0	7,047.3	10,136.9	7,236.8	70.0	69.3	118.56	619.8	2,418.4	398.7	277.0	121.65	3.277		
10,100.0	7,049.0	10,236.9	7,238.6	72.4	71.7	118.56	619.8	2,518.3	398.7	272.8	125.89	3.167		
10,200.0	7,050.8	10,336.9	7,240.3	74.8	74.1	118.56	619.9	2,618.3	398.7	268.5	130.15	3.063		

CC - Min centre to center distance or convergent point, SF - min separation factor, ES - min ellipse separation

# Anticollision Report

<b>Company:</b>	EnCana Oil & Gas (USA) Inc	<b>Local Co-ordinate Reference:</b>	Well Billings 3A-18H
<b>Project:</b>	DJ Wattenberg	<b>TVD Reference:</b>	WELL @ 5159.0ft (Original Well Elev)
<b>Reference Site:</b>	S18-T3N-R68W (Billings)	<b>MD Reference:</b>	WELL @ 5159.0ft (Original Well Elev)
<b>Site Error:</b>	0.0ft	<b>North Reference:</b>	True
<b>Reference Well:</b>	Billings 3A-18H	<b>Survey Calculation Method:</b>	Minimum Curvature
<b>Well Error:</b>	0.0ft	<b>Output errors are at</b>	2.00 sigma
<b>Reference Wellbore</b>	Hz	<b>Database:</b>	USA EDM 5000 Multi Users DB
<b>Reference Design:</b>	Plan #1	<b>Offset TVD Reference:</b>	Offset Datum

Offset Design S18-T3N-R68W (Billings) - Billings 3B-18H - Hz - Plan #1													Offset Site Error:	0.0 ft
Survey Program: 0-MWD													Offset Well Error:	0.0 ft
Reference		Offset		Semi Major Axis			Distance				Total		Warning	
Measured Depth (ft)	Vertical Depth (ft)	Measured Depth (ft)	Vertical Depth (ft)	Reference (ft)	Offset (ft)	Highside Toolface (°)	Offset Wellbore Centre +N/-S (ft)	+E/-W (ft)	Between Centres (ft)	Between Ellipses (ft)	Uncertainty Axis	Separation Factor		
10,300.0	7,052.5	10,436.9	7,242.1	77.2	76.5	118.56	619.9	2,718.3	398.6	264.2	134.41	2.966		
10,400.0	7,054.2	10,536.9	7,243.8	79.6	78.9	118.56	619.9	2,818.3	398.6	260.0	138.67	2.875		
10,500.0	7,056.0	10,636.9	7,245.5	82.0	81.3	118.56	619.9	2,918.3	398.6	255.7	142.94	2.789		
10,600.0	7,057.7	10,736.9	7,247.3	84.4	83.8	118.56	619.9	3,018.3	398.6	251.4	147.22	2.708		
10,700.0	7,059.5	10,836.9	7,249.0	86.8	86.2	118.56	619.9	3,118.3	398.6	247.1	151.49	2.631		
10,800.0	7,061.2	10,936.9	7,250.8	89.2	88.6	118.56	619.9	3,218.2	398.6	242.8	155.78	2.559		
10,900.0	7,063.0	11,036.9	7,252.5	91.7	91.1	118.56	619.9	3,318.2	398.6	238.5	160.06	2.490		
11,000.0	7,064.7	11,136.9	7,254.3	94.1	93.5	118.56	619.9	3,418.2	398.6	234.2	164.35	2.425		
11,100.0	7,066.5	11,236.9	7,256.0	96.5	95.9	118.57	619.9	3,518.2	398.6	229.9	168.64	2.363		
11,200.0	7,068.2	11,336.9	7,257.8	98.9	98.4	118.57	619.9	3,618.2	398.6	225.6	172.94	2.305		
11,300.0	7,070.0	11,436.9	7,259.5	101.4	100.8	118.57	619.9	3,718.2	398.5	221.3	177.24	2.249		
11,400.0	7,071.7	11,536.9	7,261.3	103.8	103.2	118.57	620.0	3,818.1	398.5	217.0	181.54	2.195		
11,500.0	7,073.4	11,636.9	7,263.0	106.2	105.7	118.57	620.0	3,918.1	398.5	212.7	185.84	2.145		
11,600.0	7,075.2	11,736.9	7,264.7	108.7	108.1	118.57	620.0	4,018.1	398.5	208.4	190.14	2.096		
11,700.0	7,076.9	11,836.9	7,266.5	111.1	110.6	118.57	620.0	4,118.1	398.5	204.1	194.45	2.049		
11,800.0	7,078.7	11,936.9	7,268.2	113.5	113.0	118.57	620.0	4,218.1	398.5	199.7	198.75	2.005		
11,900.0	7,080.4	12,036.9	7,270.0	116.0	115.5	118.57	620.0	4,318.1	398.5	195.4	203.06	1.962		
12,000.0	7,082.2	12,136.9	7,271.7	118.4	117.9	118.57	620.0	4,418.1	398.5	191.1	207.37	1.922		
12,100.0	7,083.9	12,236.9	7,273.5	120.9	120.4	118.57	620.0	4,518.0	398.5	186.8	211.69	1.882		
12,200.0	7,085.7	12,336.9	7,275.2	123.3	122.8	118.57	620.0	4,618.0	398.5	182.5	216.00	1.845		
12,300.0	7,087.4	12,436.9	7,277.0	125.8	125.3	118.57	620.0	4,718.0	398.5	178.1	220.32	1.809		
12,400.0	7,089.2	12,536.9	7,278.7	128.2	127.7	118.58	620.0	4,818.0	398.4	173.8	224.63	1.774		
12,500.0	7,090.9	12,636.9	7,280.5	130.6	130.2	118.58	620.0	4,918.0	398.4	169.5	228.95	1.740		
12,600.0	7,092.6	12,736.9	7,282.2	133.1	132.6	118.58	620.1	5,018.0	398.4	165.2	233.27	1.708		
12,700.0	7,094.4	12,836.9	7,283.9	135.5	135.1	118.58	620.1	5,117.9	398.4	160.8	237.59	1.677		
12,800.0	7,096.1	12,936.9	7,285.7	138.0	137.5	118.58	620.1	5,217.9	398.4	156.5	241.91	1.647		
12,900.0	7,097.9	13,036.9	7,287.4	140.4	140.0	118.58	620.1	5,317.9	398.4	152.2	246.23	1.618		
13,000.0	7,099.6	13,136.9	7,289.2	142.9	142.5	118.58	620.1	5,417.9	398.4	147.8	250.55	1.590		
13,100.0	7,101.4	13,236.9	7,290.9	145.3	144.9	118.58	620.1	5,517.9	398.4	143.5	254.87	1.563		
13,200.0	7,103.1	13,336.9	7,292.7	147.8	147.4	118.58	620.1	5,617.9	398.4	139.2	259.20	1.537		
13,300.0	7,104.9	13,436.9	7,294.4	150.3	149.8	118.58	620.1	5,717.9	398.4	134.8	263.52	1.512		
13,400.0	7,106.6	13,536.9	7,296.2	152.7	152.3	118.58	620.1	5,817.8	398.4	130.5	267.85	1.487 Level 3		
13,500.0	7,108.4	13,636.9	7,297.9	155.2	154.8	118.58	620.1	5,917.8	398.3	126.2	272.17	1.464 Level 3		
13,600.0	7,110.1	13,736.9	7,299.6	157.6	157.2	118.58	620.1	6,017.8	398.3	121.8	276.50	1.441 Level 3		
13,700.0	7,111.8	13,836.9	7,301.4	160.1	159.7	118.58	620.1	6,117.8	398.3	117.5	280.82	1.418 Level 3		
13,800.0	7,113.6	13,936.9	7,303.1	162.5	162.1	118.59	620.2	6,217.8	398.3	113.2	285.15	1.397 Level 3		
13,900.0	7,115.3	14,036.9	7,304.9	165.0	164.6	118.59	620.2	6,317.8	398.3	108.8	289.48	1.376 Level 3		
14,000.0	7,117.1	14,136.9	7,306.6	167.4	167.1	118.59	620.2	6,417.7	398.3	104.5	293.81	1.356 Level 3		
14,100.0	7,118.8	14,236.9	7,308.4	169.9	169.5	118.59	620.2	6,517.7	398.3	100.1	298.14	1.336 Level 3		
14,200.0	7,120.6	14,336.9	7,310.1	172.4	172.0	118.59	620.2	6,617.7	398.3	95.8	302.47	1.317 Level 3		
14,244.7	7,121.3	14,381.6	7,310.9	173.5	173.1	118.59	620.2	6,662.5	398.3	93.9	304.40	1.308 Level 3, SF		

# Anticollision Report

<b>Company:</b>	EnCana Oil & Gas (USA) Inc	<b>Local Co-ordinate Reference:</b>	Well Billings 3A-18H
<b>Project:</b>	DJ Wattenberg	<b>TVD Reference:</b>	WELL @ 5159.0ft (Original Well Elev)
<b>Reference Site:</b>	S18-T3N-R68W (Billings)	<b>MD Reference:</b>	WELL @ 5159.0ft (Original Well Elev)
<b>Site Error:</b>	0.0ft	<b>North Reference:</b>	True
<b>Reference Well:</b>	Billings 3A-18H	<b>Survey Calculation Method:</b>	Minimum Curvature
<b>Well Error:</b>	0.0ft	<b>Output errors are at</b>	2.00 sigma
<b>Reference Wellbore</b>	Hz	<b>Database:</b>	USA EDM 5000 Multi Users DB
<b>Reference Design:</b>	Plan #1	<b>Offset TVD Reference:</b>	Offset Datum

Offset Design S18-T3N-R68W (Billings) - Billings 3C-18H - Hz - Plan #1													Offset Site Error:	0.0 ft
Survey Program: 0-MWD													Offset Well Error:	0.0 ft
Reference		Offset		Semi Major Axis		Highside Toolface (°)	Offset Wellbore Centre		Distance		Total Uncertainty Axis	Separation Factor	Warning	
Measured Depth (ft)	Vertical Depth (ft)	Measured Depth (ft)	Vertical Depth (ft)	Reference (ft)	Offset (ft)		+N/-S (ft)	+E/-W (ft)	Between Centres (ft)	Between Ellipses (ft)				
0.0	0.0	0.0	0.0	0.0	0.0	-180.00	-21.9	0.0	21.9					
100.0	100.0	99.0	99.0	0.2	0.2	-180.00	-21.9	0.0	21.9	21.6	0.30	72.334		
200.0	200.0	199.0	199.0	0.3	0.3	-180.00	-21.9	0.0	21.9	21.2	0.65	33.574 CC, ES		
300.0	300.0	299.0	299.0	0.5	0.5	-144.09	-21.9	0.0	22.6	21.6	1.00	22.551		
400.0	400.0	399.0	399.0	0.7	0.7	-147.64	-21.9	0.0	24.7	23.4	1.35	18.308		
500.0	499.9	499.1	499.1	0.9	0.8	-150.83	-21.5	-0.8	28.1	26.4	1.70	16.489		
600.0	599.7	599.3	599.2	1.1	1.0	-152.08	-20.6	-3.2	32.1	30.1	2.06	15.605		
700.0	699.4	699.5	699.4	1.3	1.2	-151.97	-19.0	-7.3	36.8	34.4	2.42	15.199		
800.0	798.9	799.7	799.4	1.5	1.4	-150.94	-16.7	-13.0	42.2	39.4	2.80	15.059 SF		
900.0	898.3	899.9	899.2	1.8	1.6	-149.35	-13.9	-20.3	48.2	45.0	3.20	15.067		
1,000.0	997.4	1,000.1	999.0	2.0	1.8	-147.44	-10.4	-29.2	55.0	51.4	3.63	15.156		
1,100.0	1,096.3	1,100.2	1,098.4	2.3	2.1	-145.38	-6.2	-39.8	62.5	58.4	4.09	15.279		
1,200.0	1,194.9	1,200.3	1,197.7	2.7	2.3	-143.27	-1.4	-51.9	70.8	66.2	4.59	15.408		
1,300.0	1,293.3	1,300.3	1,296.6	3.0	2.6	-141.20	4.0	-65.7	79.9	74.8	5.15	15.527		
1,400.0	1,391.2	1,400.2	1,395.2	3.4	2.9	-139.21	10.1	-81.0	89.9	84.1	5.75	15.627		
1,500.0	1,488.9	1,499.6	1,493.0	3.8	3.3	-137.80	16.4	-97.1	101.0	94.6	6.38	15.824		
1,600.0	1,586.1	1,598.8	1,590.7	4.2	3.6	-137.25	22.7	-113.1	113.4	106.3	7.02	16.157		
1,700.0	1,682.9	1,697.9	1,688.3	4.7	3.9	-137.33	29.0	-129.1	127.0	119.4	7.65	16.598		
1,800.0	1,779.5	1,796.9	1,785.8	5.2	4.3	-137.70	35.3	-145.1	141.3	133.0	8.29	17.048		
1,900.0	1,876.1	1,895.8	1,883.2	5.6	4.6	-138.01	41.6	-161.1	155.7	146.7	8.93	17.427		
2,000.0	1,972.7	1,994.8	1,980.7	6.1	4.9	-138.27	47.9	-177.1	170.0	160.4	9.58	17.749		
2,100.0	2,069.3	2,093.8	2,078.2	6.6	5.3	-138.49	54.2	-193.1	184.3	174.1	10.22	18.025		
2,200.0	2,165.9	2,192.7	2,175.6	7.1	5.6	-138.67	60.5	-209.1	198.6	187.7	10.87	18.265		
2,300.0	2,262.5	2,291.7	2,273.1	7.5	5.9	-138.83	66.8	-225.1	212.9	201.4	11.53	18.474		
2,400.0	2,359.1	2,390.7	2,370.5	8.0	6.3	-138.97	73.1	-241.0	227.3	215.1	12.18	18.659		
2,500.0	2,455.7	2,489.6	2,468.0	8.5	6.6	-139.10	79.4	-257.0	241.6	228.7	12.83	18.824		
2,600.0	2,552.3	2,588.6	2,565.5	9.0	7.0	-139.21	85.7	-273.0	255.9	242.4	13.49	18.970		
2,700.0	2,648.8	2,687.6	2,662.9	9.5	7.3	-139.31	92.0	-289.0	270.2	256.1	14.15	19.102		
2,800.0	2,745.4	2,786.5	2,760.4	10.0	7.7	-139.39	98.3	-305.0	284.6	269.8	14.80	19.221		
2,900.0	2,842.0	2,885.5	2,857.9	10.4	8.0	-139.47	104.6	-321.0	298.9	283.4	15.46	19.329		
3,000.0	2,938.6	2,984.5	2,955.3	10.9	8.4	-139.55	110.9	-337.0	313.2	297.1	16.12	19.428		
3,100.0	3,035.2	3,083.4	3,052.8	11.4	8.7	-139.61	117.2	-353.0	327.5	310.8	16.78	19.518		
3,200.0	3,131.8	3,182.4	3,150.3	11.9	9.0	-139.67	123.5	-369.0	341.9	324.4	17.44	19.601		
3,300.0	3,228.4	3,281.4	3,247.7	12.4	9.4	-139.73	129.8	-385.0	356.2	338.1	18.10	19.677		
3,400.0	3,325.0	3,380.3	3,345.2	12.9	9.7	-139.78	136.1	-400.9	370.5	351.8	18.76	19.747		
3,500.0	3,421.6	3,479.3	3,442.6	13.3	10.1	-139.83	142.4	-416.9	384.9	365.4	19.43	19.813		
3,600.0	3,518.2	3,578.3	3,540.1	13.8	10.4	-139.87	148.7	-432.9	399.2	379.1	20.09	19.873		
3,700.0	3,614.8	3,677.2	3,637.6	14.3	10.8	-139.91	155.0	-448.9	413.5	392.8	20.75	19.930		
3,800.0	3,711.4	3,776.2	3,735.0	14.8	11.1	-139.95	161.3	-464.9	427.9	406.4	21.41	19.982		
3,900.0	3,808.0	3,875.2	3,832.5	15.3	11.5	-139.99	167.6	-480.9	442.2	420.1	22.07	20.032		
4,000.0	3,904.6	3,974.1	3,930.0	15.8	11.8	-140.02	173.9	-496.9	456.5	433.8	22.74	20.078		
4,100.0	4,001.1	4,073.1	4,027.4	16.3	12.2	-140.05	180.2	-512.9	470.8	447.4	23.40	20.122		
4,200.0	4,097.7	4,172.1	4,124.9	16.8	12.5	-140.08	186.5	-528.9	485.2	461.1	24.06	20.163		
4,300.0	4,194.3	4,271.0	4,222.4	17.2	12.9	-140.11	192.8	-544.8	499.5	474.8	24.73	20.201		

# Anticollision Report

<b>Company:</b>	EnCana Oil & Gas (USA) Inc	<b>Local Co-ordinate Reference:</b>	Well Billings 3A-18H
<b>Project:</b>	DJ Wattenberg	<b>TVD Reference:</b>	WELL @ 5159.0ft (Original Well Elev)
<b>Reference Site:</b>	S18-T3N-R68W (Billings)	<b>MD Reference:</b>	WELL @ 5159.0ft (Original Well Elev)
<b>Site Error:</b>	0.0ft	<b>North Reference:</b>	True
<b>Reference Well:</b>	Billings 3A-18H	<b>Survey Calculation Method:</b>	Minimum Curvature
<b>Well Error:</b>	0.0ft	<b>Output errors are at</b>	2.00 sigma
<b>Reference Wellbore</b>	Hz	<b>Database:</b>	USA EDM 5000 Multi Users DB
<b>Reference Design:</b>	Plan #1	<b>Offset TVD Reference:</b>	Offset Datum

Offset Design S18-T3N-R68W (Billings) - Billings 3D-18H - Hz - Plan #1													Offset Site Error:	0.0 ft
Survey Program: 0-MWD													Offset Well Error:	0.0 ft
Reference		Offset		Semi Major Axis		Distance		Total		Separation		Warning		
Measured Depth (ft)	Vertical Depth (ft)	Measured Depth (ft)	Vertical Depth (ft)	Reference (ft)	Offset (ft)	Highside Toolface (°)	Offset Wellbore Centre +N/-S (ft)	+E/-W (ft)	Between Centres (ft)	Between Ellipses (ft)	Uncertainty Axis			
0.0	0.0	0.0	0.0	0.0	0.0	-180.00	-32.8	0.0	32.8					
100.0	100.0	99.0	99.0	0.2	0.2	-180.00	-32.8	0.0	32.8	32.5	0.30	108.515		
200.0	200.0	199.0	199.0	0.3	0.3	-180.00	-32.8	0.0	32.8	32.1	0.65	50.368 CC, ES		
300.0	300.0	299.0	299.0	0.5	0.5	-143.65	-32.8	0.0	33.5	32.5	1.00	33.477		
400.0	400.0	399.0	399.0	0.7	0.7	-146.13	-32.8	0.0	35.6	34.3	1.35	26.380		
500.0	499.9	498.9	498.9	0.9	0.8	-149.66	-32.8	0.0	39.3	37.6	1.70	23.106		
600.0	599.7	598.8	598.8	1.1	1.0	-152.50	-32.8	-0.8	44.6	42.6	2.06	21.707		
700.0	699.4	698.6	698.6	1.3	1.2	-153.64	-33.0	-3.4	51.3	48.9	2.41	21.269 SF		
800.0	798.9	798.4	798.3	1.5	1.4	-153.56	-33.3	-7.8	59.4	56.6	2.78	21.359		
900.0	898.3	898.1	897.8	1.8	1.6	-152.70	-33.7	-13.8	68.8	65.6	3.16	21.752		
1,000.0	997.4	997.6	997.0	2.0	1.8	-151.37	-34.3	-21.5	79.6	76.0	3.57	22.314		
1,100.0	1,096.3	1,097.0	1,095.9	2.3	2.0	-149.79	-34.9	-31.0	91.8	87.8	4.00	22.961		
1,200.0	1,194.9	1,196.1	1,194.3	2.7	2.2	-148.12	-35.7	-42.1	105.5	101.0	4.46	23.634		
1,300.0	1,293.3	1,294.9	1,292.3	3.0	2.5	-146.45	-36.5	-54.9	120.6	115.7	4.97	24.296		
1,400.0	1,391.2	1,393.4	1,389.8	3.4	2.8	-144.82	-37.5	-69.4	137.3	131.8	5.51	24.923		
1,500.0	1,488.9	1,491.6	1,486.6	3.8	3.1	-143.27	-38.6	-85.4	155.5	149.4	6.10	25.504		
1,600.0	1,586.1	1,589.6	1,583.1	4.2	3.4	-142.03	-39.8	-102.4	175.3	168.5	6.71	26.106		
1,700.0	1,682.9	1,687.3	1,679.4	4.7	3.7	-141.34	-40.9	-119.3	196.3	189.0	7.34	26.747		
1,800.0	1,779.5	1,784.9	1,775.5	5.2	4.0	-141.03	-42.1	-136.2	218.1	210.1	7.98	27.333		
1,900.0	1,876.1	1,882.5	1,871.6	5.6	4.3	-140.78	-43.2	-153.1	239.9	231.3	8.63	27.810		
2,000.0	1,972.7	1,980.1	1,967.7	6.1	4.7	-140.57	-44.4	-170.0	261.7	252.4	9.28	28.203		
2,100.0	2,069.3	2,077.7	2,063.8	6.6	5.0	-140.40	-45.5	-186.9	283.4	273.5	9.93	28.531		
2,200.0	2,165.9	2,175.3	2,159.9	7.1	5.3	-140.24	-46.7	-203.8	305.2	294.6	10.59	28.809		
2,300.0	2,262.5	2,272.9	2,256.1	7.5	5.7	-140.11	-47.8	-220.7	327.0	315.8	11.26	29.046		
2,400.0	2,359.1	2,370.5	2,352.2	8.0	6.0	-140.00	-49.0	-237.6	348.8	336.9	11.92	29.250		
2,500.0	2,455.7	2,468.1	2,448.3	8.5	6.3	-139.90	-50.1	-254.6	370.6	358.0	12.59	29.428		
2,600.0	2,552.3	2,565.7	2,544.4	9.0	6.7	-139.81	-51.3	-271.5	392.4	379.1	13.26	29.583		
2,700.0	2,648.8	2,663.2	2,640.5	9.5	7.0	-139.73	-52.4	-288.4	414.2	400.2	13.94	29.721		
2,800.0	2,745.4	2,760.8	2,736.6	10.0	7.3	-139.65	-53.6	-305.3	435.9	421.3	14.61	29.843		
2,900.0	2,842.0	2,858.4	2,832.7	10.4	7.7	-139.59	-54.8	-322.2	457.7	442.5	15.28	29.951		
3,000.0	2,938.6	2,956.0	2,928.8	10.9	8.0	-139.53	-55.9	-339.1	479.5	463.6	15.96	30.049		

# Anticollision Report

<b>Company:</b>	EnCana Oil & Gas (USA) Inc	<b>Local Co-ordinate Reference:</b>	Well Billings 3A-18H
<b>Project:</b>	DJ Wattenberg	<b>TVD Reference:</b>	WELL @ 5159.0ft (Original Well Elev)
<b>Reference Site:</b>	S18-T3N-R68W (Billings)	<b>MD Reference:</b>	WELL @ 5159.0ft (Original Well Elev)
<b>Site Error:</b>	0.0ft	<b>North Reference:</b>	True
<b>Reference Well:</b>	Billings 3A-18H	<b>Survey Calculation Method:</b>	Minimum Curvature
<b>Well Error:</b>	0.0ft	<b>Output errors are at</b>	2.00 sigma
<b>Reference Wellbore</b>	Hz	<b>Database:</b>	USA EDM 5000 Multi Users DB
<b>Reference Design:</b>	Plan #1	<b>Offset TVD Reference:</b>	Offset Datum

Offset Design S18-T3N-R68W (Billings) - Billings 3E-18H - Hz - Plan #1													Offset Site Error: 0.0 ft	
Survey Program: 0-MWD													Offset Well Error: 0.0 ft	
Reference		Offset		Semi Major Axis			Distance						Warning	
Measured Depth (ft)	Vertical Depth (ft)	Measured Depth (ft)	Vertical Depth (ft)	Reference (ft)	Offset (ft)	Highside Toolface (°)	Offset Wellbore Centre +N/-S (ft)	+E/-W (ft)	Between Centres (ft)	Between Ellipses (ft)	Total Uncertainty Axis	Separation Factor		
0.0	0.0	0.0	0.0	0.0	0.0	-180.00	-40.1	0.0	40.1					
100.0	100.0	99.0	99.0	0.2	0.2	-180.00	-40.1	0.0	40.1	39.8	0.30	132.612		
200.0	200.0	199.0	199.0	0.3	0.3	-180.00	-40.1	0.0	40.1	39.4	0.65	61.553 CC, ES		
300.0	300.0	299.0	299.0	0.5	0.5	-143.49	-40.1	0.0	40.8	39.8	1.00	40.756		
400.0	400.0	399.0	399.0	0.7	0.7	-145.56	-40.1	0.0	42.9	41.6	1.35	31.761		
500.0	499.9	498.6	498.6	0.9	0.8	-147.60	-40.5	-0.8	46.9	45.2	1.70	27.538		
600.0	599.7	598.0	598.0	1.1	1.0	-148.52	-41.7	-3.0	53.1	51.0	2.06	25.760		
700.0	699.4	697.3	697.2	1.3	1.2	-148.56	-43.7	-6.8	61.4	58.9	2.43	25.298 SF		
800.0	798.9	796.3	796.0	1.5	1.4	-148.02	-46.4	-12.1	71.8	69.0	2.80	25.595		
900.0	898.3	895.0	894.4	1.8	1.6	-147.14	-50.0	-18.9	84.3	81.1	3.20	26.344		
1,000.0	997.4	993.3	992.2	2.0	1.8	-146.12	-54.3	-27.2	99.0	95.4	3.62	27.359		
1,100.0	1,096.3	1,091.1	1,089.4	2.3	2.1	-145.05	-59.4	-36.9	115.9	111.8	4.06	28.519		
1,200.0	1,194.9	1,188.3	1,185.9	2.7	2.3	-144.00	-65.2	-47.9	134.9	130.3	4.53	29.746		
1,300.0	1,293.3	1,285.0	1,281.5	3.0	2.6	-143.01	-71.8	-60.4	156.0	150.9	5.03	30.987		
1,400.0	1,391.2	1,380.9	1,376.1	3.4	2.9	-142.08	-79.0	-74.2	179.2	173.7	5.56	32.208		
1,500.0	1,488.9	1,477.4	1,471.2	3.8	3.2	-141.34	-86.8	-89.0	204.4	198.2	6.12	33.396		
1,600.0	1,586.1	1,573.8	1,566.1	4.2	3.5	-140.98	-94.6	-103.8	230.8	224.1	6.69	34.510		
1,700.0	1,682.9	1,669.9	1,660.7	4.7	3.8	-140.91	-102.3	-118.6	258.6	251.3	7.27	35.568		
1,800.0	1,779.5	1,765.8	1,755.2	5.2	4.1	-141.12	-110.1	-133.3	287.0	279.2	7.86	36.498		
1,900.0	1,876.1	1,861.6	1,849.6	5.6	4.5	-141.29	-117.8	-148.0	315.4	307.0	8.46	37.276		
2,000.0	1,972.7	1,957.5	1,944.0	6.1	4.8	-141.43	-125.5	-162.8	343.9	334.8	9.06	37.935		
2,100.0	2,069.3	2,053.4	2,038.4	6.6	5.1	-141.54	-133.3	-177.5	372.3	362.6	9.67	38.500		
2,200.0	2,165.9	2,149.3	2,132.8	7.1	5.5	-141.65	-141.0	-192.3	400.7	390.5	10.28	38.988		
2,300.0	2,262.5	2,245.1	2,227.2	7.5	5.8	-141.73	-148.8	-207.0	429.2	418.3	10.89	39.414		
2,400.0	2,359.1	2,341.0	2,321.6	8.0	6.1	-141.81	-156.5	-221.7	457.6	446.1	11.50	39.788		
2,500.0	2,455.7	2,436.9	2,416.1	8.5	6.4	-141.88	-164.2	-236.5	486.0	473.9	12.11	40.119		



# Anticollision Report

<b>Company:</b>	EnCana Oil & Gas (USA) Inc	<b>Local Co-ordinate Reference:</b>	Well Billings 3A-18H
<b>Project:</b>	DJ Wattenberg	<b>TVD Reference:</b>	WELL @ 5159.0ft (Original Well Elev)
<b>Reference Site:</b>	S18-T3N-R68W (Billings)	<b>MD Reference:</b>	WELL @ 5159.0ft (Original Well Elev)
<b>Site Error:</b>	0.0ft	<b>North Reference:</b>	True
<b>Reference Well:</b>	Billings 3A-18H	<b>Survey Calculation Method:</b>	Minimum Curvature
<b>Well Error:</b>	0.0ft	<b>Output errors are at</b>	2.00 sigma
<b>Reference Wellbore</b>	Hz	<b>Database:</b>	USA EDM 5000 Multi Users DB
<b>Reference Design:</b>	Plan #1	<b>Offset TVD Reference:</b>	Offset Datum

Offset Design S18-T3N-R68W (Billings) - Billings 3F-18H - Hz - Plan #1													Offset Site Error:	0.0 ft
Survey Program: 0-MWD													Offset Well Error:	0.0 ft
Reference		Offset		Semi Major Axis			Distance						Warning	
Measured Depth (ft)	Vertical Depth (ft)	Measured Depth (ft)	Vertical Depth (ft)	Reference (ft)	Offset (ft)	Highside Toolface (°)	Offset Wellbore Centre +N/-S (ft)	+E/-W (ft)	Between Centres (ft)	Between Ellipses (ft)	Total Uncertainty Axis	Separation Factor		
0.0	0.0	0.0	0.0	0.0	0.0	-180.00	-51.0	0.0	51.0					
100.0	100.0	99.0	99.0	0.2	0.2	-180.00	-51.0	0.0	51.0	50.7	0.30	168.779		
200.0	200.0	199.0	199.0	0.3	0.3	-180.00	-51.0	0.0	51.0	50.3	0.65	78.340 CC, ES		
300.0	300.0	299.0	299.0	0.5	0.5	-143.33	-51.0	0.0	51.7	50.7	1.00	51.680		
400.0	400.0	399.0	399.0	0.7	0.7	-144.98	-51.0	0.0	53.8	52.5	1.35	39.843		
500.0	499.9	497.6	497.6	0.9	0.8	-146.17	-52.2	-1.2	58.5	56.8	1.70	34.389		
600.0	599.7	595.8	595.7	1.1	1.0	-145.73	-55.7	-4.8	67.0	64.9	2.06	32.459		
700.0	699.4	693.4	692.9	1.3	1.2	-144.24	-61.5	-10.7	79.1	76.6	2.44	32.406 SF		
800.0	798.9	790.1	788.8	1.5	1.5	-142.28	-69.5	-18.9	95.0	92.1	2.84	33.431		
900.0	898.3	885.5	883.2	1.8	1.8	-140.24	-79.7	-29.3	114.6	111.4	3.27	35.090		
1,000.0	997.4	979.6	975.7	2.0	2.1	-138.30	-91.9	-41.8	138.1	134.3	3.72	37.109		
1,100.0	1,096.3	1,073.0	1,066.9	2.3	2.4	-136.57	-106.0	-56.2	165.2	161.0	4.20	39.349		
1,200.0	1,194.9	1,168.7	1,160.1	2.7	2.8	-135.41	-121.1	-71.5	194.2	189.5	4.70	41.313		
1,300.0	1,293.3	1,264.0	1,252.9	3.0	3.2	-134.82	-136.0	-86.9	224.5	219.3	5.22	42.984		
1,400.0	1,391.2	1,358.9	1,345.4	3.4	3.6	-134.60	-151.0	-102.1	256.0	250.2	5.76	44.415		
1,500.0	1,488.9	1,453.4	1,437.5	3.8	4.0	-134.62	-165.9	-117.3	288.6	282.3	6.32	45.657		
1,600.0	1,586.1	1,547.5	1,529.2	4.2	4.4	-134.81	-180.7	-132.4	322.4	315.5	6.90	46.754		
1,700.0	1,682.9	1,641.1	1,620.4	4.7	4.8	-135.12	-195.4	-147.5	357.4	349.9	7.49	47.738		
1,800.0	1,779.5	1,734.5	1,711.4	5.2	5.2	-135.69	-210.1	-162.5	392.9	384.9	8.09	48.549		
1,900.0	1,876.1	1,827.9	1,802.4	5.6	5.6	-136.16	-224.8	-177.5	428.6	419.9	8.70	49.232		
2,000.0	1,972.7	1,921.3	1,893.4	6.1	6.0	-136.56	-239.5	-192.5	464.2	454.9	9.32	49.814		
2,100.0	2,069.3	2,014.7	1,984.4	6.6	6.4	-136.90	-254.2	-207.5	499.8	489.9	9.93	50.316		

# Anticollision Report

<b>Company:</b>	EnCana Oil & Gas (USA) Inc	<b>Local Co-ordinate Reference:</b>	Well Billings 3A-18H
<b>Project:</b>	DJ Wattenberg	<b>TVD Reference:</b>	WELL @ 5159.0ft (Original Well Elev)
<b>Reference Site:</b>	S18-T3N-R68W (Billings)	<b>MD Reference:</b>	WELL @ 5159.0ft (Original Well Elev)
<b>Site Error:</b>	0.0ft	<b>North Reference:</b>	True
<b>Reference Well:</b>	Billings 3A-18H	<b>Survey Calculation Method:</b>	Minimum Curvature
<b>Well Error:</b>	0.0ft	<b>Output errors are at</b>	2.00 sigma
<b>Reference Wellbore</b>	Hz	<b>Database:</b>	USA EDM 5000 Multi Users DB
<b>Reference Design:</b>	Plan #1	<b>Offset TVD Reference:</b>	Offset Datum

Offset Design S18-T3N-R68W (Billings) - Billings 3G-18H - Hz - Plan #1													Offset Site Error:	0.0 ft
Survey Program: 0-MWD													Offset Well Error:	0.0 ft
Reference		Offset		Semi Major Axis		Distance		Total		Separation		Warning		
Measured Depth (ft)	Vertical Depth (ft)	Measured Depth (ft)	Vertical Depth (ft)	Reference (ft)	Offset (ft)	Highside Toolface (°)	Offset Wellbore Centre +N/-S (ft)	+E/-W (ft)	Between Centres (ft)	Between Ellipses (ft)	Uncertainty Axis	Factor		
0.0	0.0	0.0	0.0	0.0	0.0	-180.00	-61.9	0.0	61.9					
100.0	100.0	100.0	100.0	0.2	0.2	-180.00	-61.9	0.0	61.9	61.6	0.30	203.922		
200.0	200.0	200.0	200.0	0.3	0.3	-180.00	-61.9	0.0	61.9	61.3	0.65	94.873 CC, ES		
300.0	300.0	300.0	300.0	0.5	0.5	-143.23	-61.9	0.0	62.6	61.6	1.00	62.495		
400.0	400.0	398.6	398.6	0.7	0.7	-144.25	-62.4	-0.4	65.3	63.9	1.35	48.319		
500.0	499.9	495.5	495.4	0.9	0.9	-143.84	-66.5	-3.2	72.9	71.2	1.70	42.791		
600.0	599.7	591.4	590.8	1.1	1.1	-142.23	-74.4	-8.7	86.0	83.9	2.07	41.530 SF		
700.0	699.4	685.7	684.0	1.3	1.3	-140.13	-86.0	-16.9	104.6	102.1	2.46	42.570		
800.0	798.9	777.9	774.3	1.5	1.7	-138.01	-101.0	-27.4	128.7	125.8	2.86	44.929		
900.0	898.3	871.2	864.9	1.8	2.1	-136.17	-119.2	-40.1	157.4	154.1	3.29	47.887		
1,000.0	997.4	966.4	957.3	2.0	2.5	-135.11	-138.1	-53.3	187.8	184.1	3.73	50.330		
1,100.0	1,096.3	1,061.3	1,049.4	2.3	2.9	-134.62	-156.9	-66.5	219.4	215.2	4.19	52.339		
1,200.0	1,194.9	1,155.8	1,141.1	2.7	3.3	-134.48	-175.6	-79.6	252.2	247.5	4.67	54.005		
1,300.0	1,293.3	1,249.8	1,232.3	3.0	3.7	-134.57	-194.2	-92.6	286.1	280.9	5.16	55.402		
1,400.0	1,391.2	1,343.4	1,323.2	3.4	4.1	-134.81	-212.8	-105.6	321.2	315.5	5.68	56.593		
1,500.0	1,488.9	1,436.6	1,413.5	3.8	4.6	-135.15	-231.2	-118.6	357.4	351.2	6.20	57.627		
1,600.0	1,586.1	1,529.2	1,503.4	4.2	5.0	-135.56	-249.6	-131.4	394.9	388.1	6.75	58.542		
1,700.0	1,682.9	1,621.3	1,592.8	4.7	5.4	-136.01	-267.9	-144.2	433.5	426.2	7.30	59.368		
1,800.0	1,779.5	1,713.1	1,681.8	5.2	5.8	-136.72	-286.0	-156.9	472.8	464.9	7.88	59.998		

# Anticollision Report

<b>Company:</b>	EnCana Oil & Gas (USA) Inc	<b>Local Co-ordinate Reference:</b>	Well Billings 3A-18H
<b>Project:</b>	DJ Wattenberg	<b>TVD Reference:</b>	WELL @ 5159.0ft (Original Well Elev)
<b>Reference Site:</b>	S18-T3N-R68W (Billings)	<b>MD Reference:</b>	WELL @ 5159.0ft (Original Well Elev)
<b>Site Error:</b>	0.0ft	<b>North Reference:</b>	True
<b>Reference Well:</b>	Billings 3A-18H	<b>Survey Calculation Method:</b>	Minimum Curvature
<b>Well Error:</b>	0.0ft	<b>Output errors are at</b>	2.00 sigma
<b>Reference Wellbore</b>	Hz	<b>Database:</b>	USA EDM 5000 Multi Users DB
<b>Reference Design:</b>	Plan #1	<b>Offset TVD Reference:</b>	Offset Datum

Offset Design S18-T3N-R68W (Billings) - Billings 3H-18H - Hz - Plan #1													Offset Site Error:	0.0 ft
Survey Program: 0-MWD													Offset Well Error:	0.0 ft
Reference		Offset		Semi Major Axis		Distance		Total		Separation		Warning		
Measured Depth (ft)	Vertical Depth (ft)	Measured Depth (ft)	Vertical Depth (ft)	Reference (ft)	Offset (ft)	Highside Toolface (°)	Offset Wellbore Centre +N/-S (ft)	+E/-W (ft)	Between Centres (ft)	Between Ellipses (ft)	Uncertainty Axis	Factor		
0.0	0.0	0.0	0.0	0.0	0.0	-180.00	-72.9	0.0	72.9					
100.0	100.0	99.0	99.0	0.2	0.2	-180.00	-72.9	0.0	72.9	72.6	0.30	241.113		
200.0	200.0	199.0	199.0	0.3	0.3	-180.00	-72.9	0.0	72.9	72.2	0.65	111.914 CC, ES		
300.0	300.0	296.8	296.8	0.5	0.5	-142.50	-74.3	-0.8	75.0	74.0	1.00	75.187		
400.0	400.0	394.3	394.2	0.7	0.7	-141.80	-78.5	-3.3	81.5	80.1	1.35	60.412		
500.0	499.9	491.1	490.6	0.9	0.9	-140.85	-85.6	-7.5	92.3	90.6	1.71	54.033		
600.0	599.7	587.0	585.9	1.1	1.2	-139.82	-95.4	-13.2	107.4	105.3	2.08	51.688		
700.0	699.4	681.7	679.4	1.3	1.4	-138.84	-107.7	-20.4	126.7	124.2	2.46	51.526 SF		
800.0	798.9	774.8	771.0	1.5	1.8	-137.96	-122.5	-29.1	150.2	147.4	2.85	52.621		
900.0	898.3	866.2	860.3	1.8	2.2	-137.19	-139.4	-39.0	177.8	174.5	3.26	54.471		
1,000.0	997.4	960.0	951.4	2.0	2.6	-136.61	-158.6	-50.2	208.6	204.9	3.69	56.478		
1,100.0	1,096.3	1,054.7	1,043.3	2.3	3.0	-136.40	-178.1	-61.6	240.7	236.5	4.14	58.138		
1,200.0	1,194.9	1,149.0	1,134.9	2.7	3.4	-136.43	-197.5	-73.0	274.0	269.4	4.60	59.539		
1,300.0	1,293.3	1,242.9	1,226.0	3.0	3.8	-136.64	-216.8	-84.3	308.5	303.4	5.08	60.738		
1,400.0	1,391.2	1,336.2	1,316.7	3.4	4.2	-136.95	-236.0	-95.6	344.2	338.6	5.57	61.783		
1,500.0	1,488.9	1,429.1	1,406.9	3.8	4.6	-137.34	-255.1	-106.7	381.1	375.0	6.08	62.711		
1,600.0	1,586.1	1,521.4	1,496.5	4.2	5.0	-137.77	-274.1	-117.9	419.3	412.7	6.60	63.551		
1,700.0	1,682.9	1,613.1	1,585.6	4.7	5.5	-138.24	-292.9	-128.9	458.7	451.6	7.13	64.328		
1,800.0	1,779.5	1,704.6	1,674.5	5.2	5.9	-138.94	-311.8	-139.9	498.8	491.1	7.68	64.908		

## Anticollision Report

<b>Company:</b>	EnCana Oil & Gas (USA) Inc	<b>Local Co-ordinate Reference:</b>	Well Billings 3A-18H
<b>Project:</b>	DJ Wattenberg	<b>TVD Reference:</b>	WELL @ 5159.0ft (Original Well Elev)
<b>Reference Site:</b>	S18-T3N-R68W (Billings)	<b>MD Reference:</b>	WELL @ 5159.0ft (Original Well Elev)
<b>Site Error:</b>	0.0ft	<b>North Reference:</b>	True
<b>Reference Well:</b>	Billings 3A-18H	<b>Survey Calculation Method:</b>	Minimum Curvature
<b>Well Error:</b>	0.0ft	<b>Output errors are at</b>	2.00 sigma
<b>Reference Wellbore</b>	Hz	<b>Database:</b>	USA EDM 5000 Multi Users DB
<b>Reference Design:</b>	Plan #1	<b>Offset TVD Reference:</b>	Offset Datum

Reference Depths are relative to WELL @ 5159.0ft (Original Well Elev)

Offset Depths are relative to Offset Datum

Central Meridian is -105.500000 °

Coordinates are relative to: Billings 3A-18H

Coordinate System is US State Plane 1983, Colorado Northern Zone

Grid Convergence at Surface is: 0.29°

