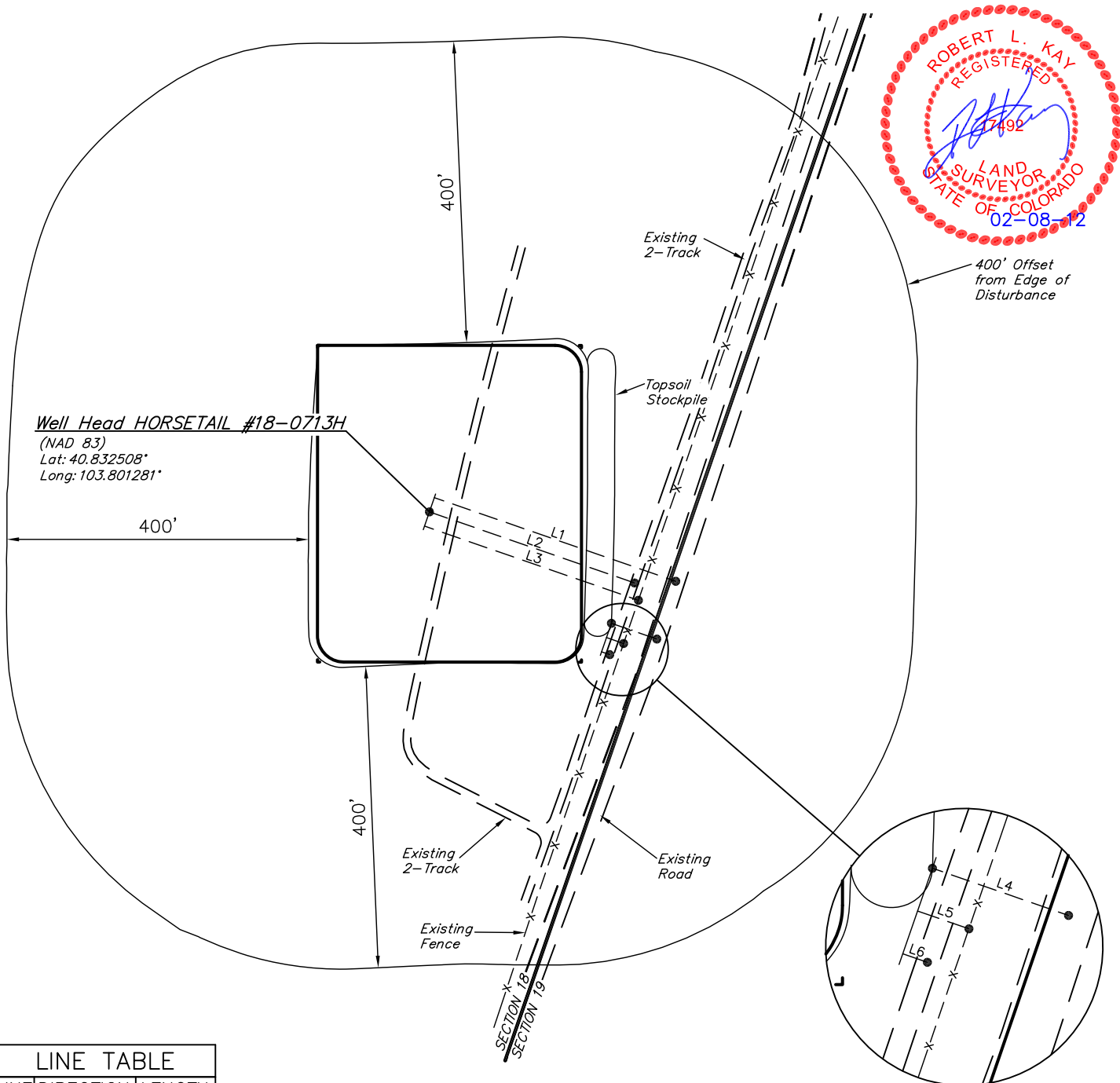
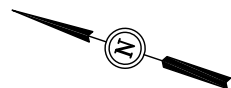


**WHITING OIL & GAS CORP.**  
**ADDENDUM TO LEGAL PLAT FOR**  
**HORSETAIL #18-0713H**  
**SECTION 18, T10N, R57W, 6th P.M.**  
**330' FSL 660' FWL**

SCALE: 1" = 200'  
 DATE: 02-08-12  
 DRAWN BY: B.L.B.



**LINE TABLE**

LINE	DIRECTION	LENGTH
L1	SOUTH	339'
L2	SOUTH	288'
L3	SOUTH	300'
L4	SOUTH	64'
L5	SOUTH	24'
L6	SOUTH	12'