

T5N, R90W, 5th. P.M.

SWEPI LP

1914 Brass Cap,  
2.0' High, Pile of  
Stones, S/E/W  
Fence  
Lat: 40.349025°  
Long: 107.509222°

1914 Brass Cap,  
2.3' High, Pile of  
Stones  
Lat: 40.349286°  
Long: 107.489947°

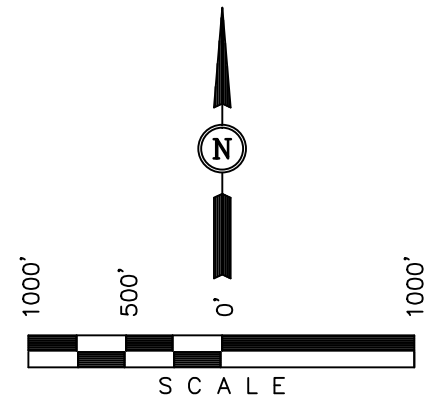
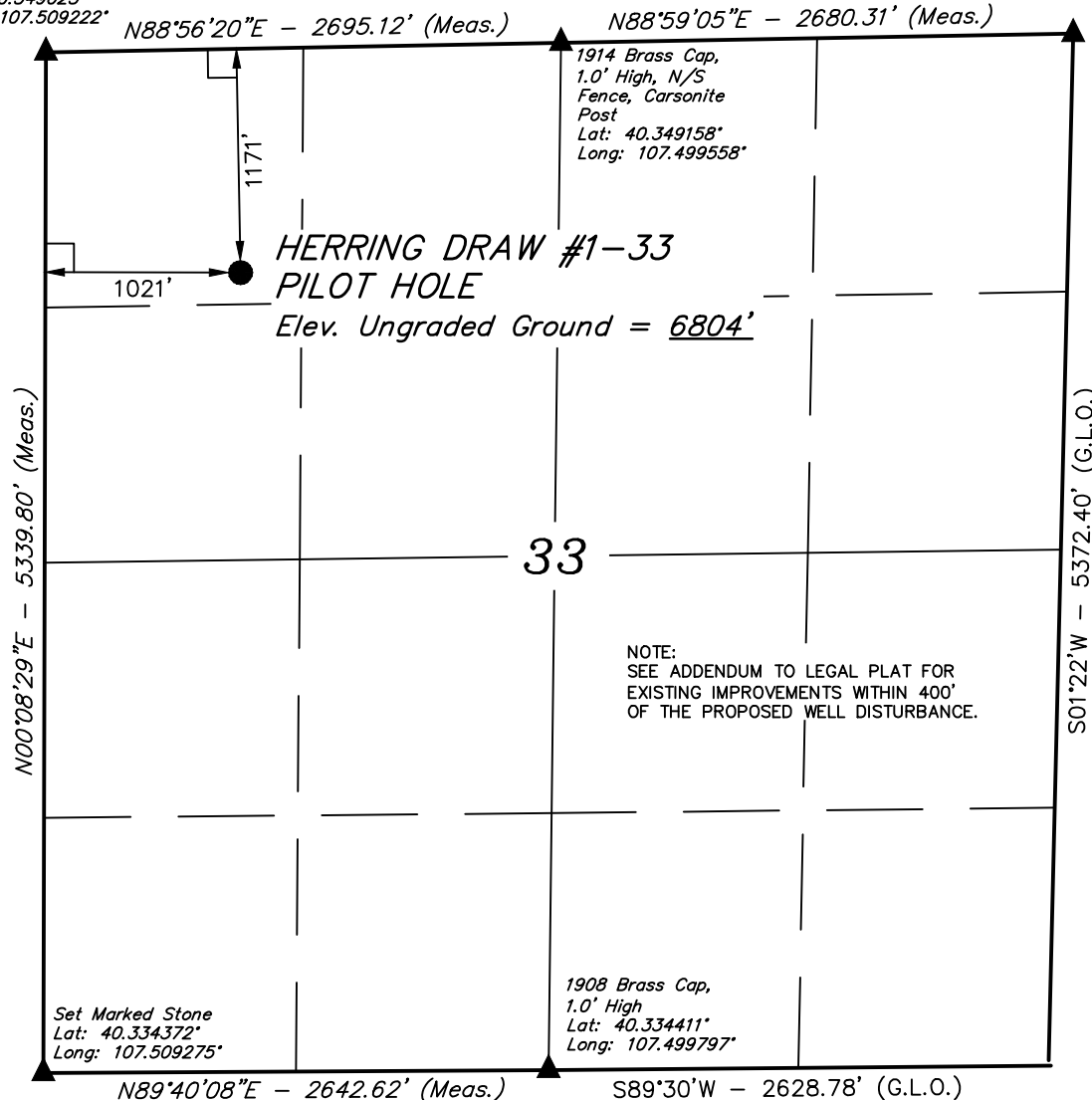
Well location, HERRING DRAW #1-33 PILOT HOLE,  
located as shown in the NW 1/4 NW 1/4 of  
Section 33, T5N, R90W, 6th. P.M., Moffat County,  
Colorado.

### BASIS OF ELEVATION

SPOT ELEVATION AT THE NORTHEAST CORNER OF SECTION 31,  
T5N, R90W, 6th P.M. TAKEN FROM THE HAMILTON  
QUADRANGLE, COLORADO, MOFFAT COUNTY, 7.5 MINUTE QUAD  
(TOPOGRAPHIC MAP) PUBLISHED BY THE UNITED STATES  
DEPARTMENT OF THE INTERIOR, GEOLOGICAL SURVEY. SAID  
ELEVATION IS MARKED AS BEING 6664 FEET.

### BASIS OF BEARINGS

BASIS OF BEARINGS IS A G.P.S. OBSERVATION.



### CERTIFICATE

THIS IS TO CERTIFY THAT THE ABOVE PLAT WAS PREPARED FROM  
FIELD NOTES OF ACTUAL SURVEYS MADE BY ME OR UNDER MY  
SUPERVISION AND THAT THE SAME ARE TRUE AND CORRECT TO THE  
BEST OF MY KNOWLEDGE AND BELIEF.

REGISTERED LAND SURVEYOR  
REGISTRATION NO. 17492  
STATE OF COLORADO

### LEGEND:

- └─┘ = 90° SYMBOL
- = PROPOSED WELL HEAD.
- ▲ = SECTION CORNERS LOCATED.

PDOP = 1.3

NAD 83 (SURFACE LOCATION)
LATITUDE = 40°20'45.10" (40.345861)
LONGITUDE = 107°30'20.06" (107.505572)
NAD 27 (SURFACE LOCATION)
LATITUDE = 40°20'45.19" (40.345886)
LONGITUDE = 107°30'17.84" (107.504956)

UINTAH ENGINEERING & LAND SURVEYING  
85 SOUTH 200 EAST - VERNAL, UTAH 84078  
(435) 789-1017

SCALE 1" = 1000'	DATE SURVEYED: 06-28-11	DATE DRAWN: 12-10-12
PARTY D.N. C.Z. M.D.	REFERENCES G.L.O. PLAT	
WEATHER WARM	FILE SWEPI LP	