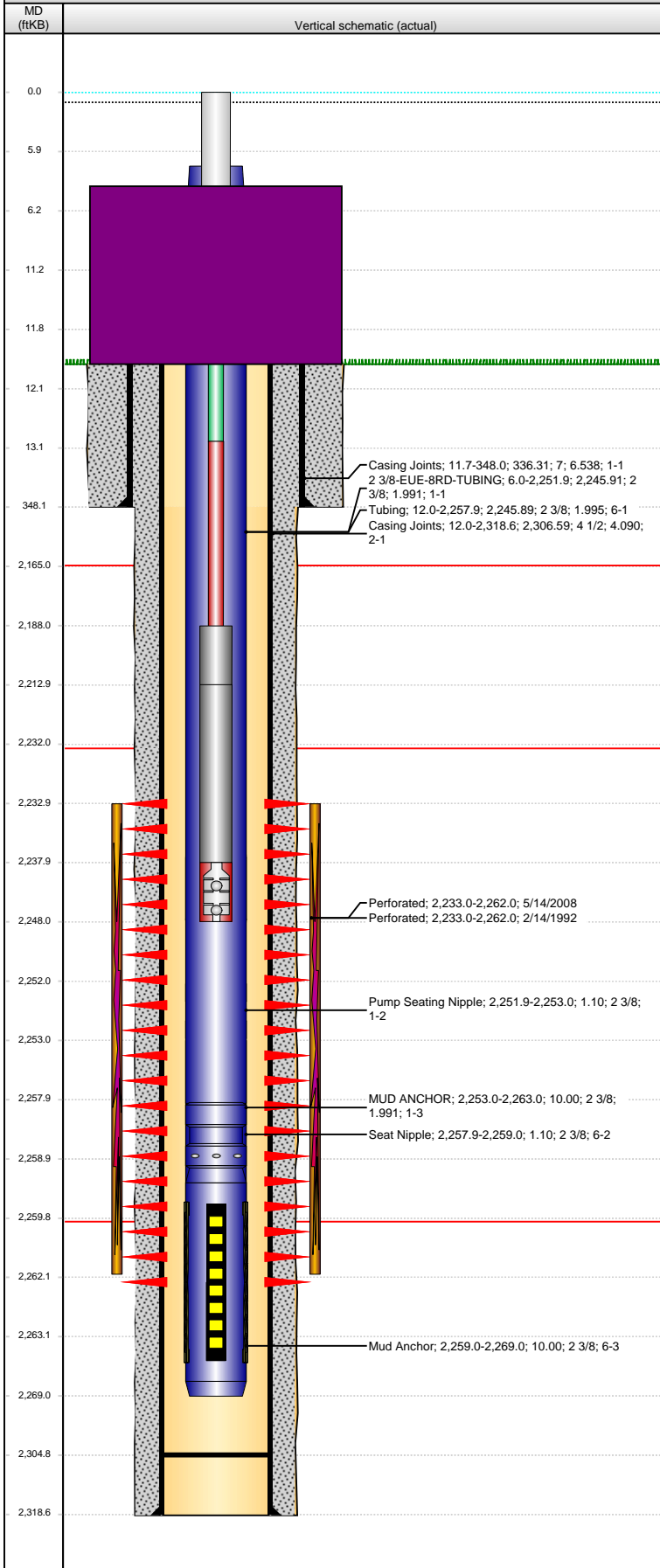


Well Name: **STONE 02-23**

VERTICAL - Original Hole, 12/20/2012 1:11:40 PM



Well Header													
API 05-125-07353		Business Unit ROCKIES		District 12		Well Config VERTICAL							
Original KB Elevation (ft) 3,788.00		KB - GL / MSL (ftKB) 12.00		Spud Date 1/25/1992		P & A Date							
Comment													
Directions To Well CO.RD 32.5 & Z 1/2 EAST AND SOUTH INTO													
Current PBTD (ftKB)													
Original Hole - 2,304.9													
Surface Location (Congressional)													
Quarter 1	Quarter 2	Quarter 3 NE	Quarter 4 SW	Section 23	Township 1 N	Twntshp N...	Range 45 W						
Rng E/W Dir													
Bottom Hole Location													
North-South Distance (ft)		From N or S Line		East-West Distance (ft)		From E or W Line							
Plug Back Total Depths													
Date		Depth (ftKB)		Method		Com							
1/28/1992		2,304.9		CASING TALLY									
Wellbore Sections													
Section Des			Size (in)		Act Top (ftKB)		Act Btm (ftKB)						
SURFACE			9 7/8		12.0		348.0						
PRODUCTION			6 1/4		348.0		2,318.6						
Zone Statuses													
Zone Name		Status Date		Status		Job							
NIOBRARA		2/16/1992		Testing									
Casing Strings													
Csg Des		Run Date		OD (in)		Wt/Len (lb/ft)		Grade		Top (ftKB)		Set Depth (ftKB)	
Surface Casing		1/26/1992		7		17.00		H-40		11.7		348.0	
Production		1/28/1992		4 1/2		9.50		J-55		12.0		2,318.6	
Cement													
Des						Top (ftKB)		Btm (ftKB)					
Surface Casing Cement						12.0		348.0					
Production Casing Cement						12.0		2,318.6					
Tubing Components													
Item Des			OD (in)		Wt (lb/ft)		Grade		Jts		Len (ft)		
2 3/8-EUE-8RD-TUBING			2 3/8		4.70		J55		72		2,245.91		
Pump Seating Nipple			2 3/8		4.70		J55		1		1.10		
MUD ANCHOR			2 3/8		4.70		J55		1		10.00		
Tubing			2 3/8		4.60		J-55		72		2,245.89		
Seat Nipple			2 3/8				J55				1.10		
Mud Anchor			2 3/8						1		10.00		
Rods & Pumps													
Rod Description					Run Date			Set Depth (ftKB)					
Rod					8/6/2008			2,248.0					
Comment													
Item Description					OD Nominal (in)		Joints		Length (ft)				
Polished Rod					1 1/8		1		11.00				
Item Description					OD Nominal (in)		Joints		Length (ft)				
Pony Rod					5/8		1		2.00				
Item Description					OD Nominal (in)		Joints		Length (ft)				
SUCKER RODS					5/8		87		2,175.00				
Item Description					OD Nominal (in)		Joints		Length (ft)				
Sinker Bar					1 1/4		1		25.00				
Item Description					OD Nominal (in)		Joints		Length (ft)				
Sinker Bar					1 1/4		1		25.00				
Item Description					OD Nominal (in)		Joints		Length (ft)				
Rod Insert Pump					1 1/4		1		10.00				
Perforation Data													
Zone		Bnch/St g		Entered Shot Total		Top (ftKB)		Btm (ftKB)		Date			
NIOBRARA, Original Hole		1		43		2,233.00		2,262.00		2/14/1992			
NIOBRARA, Original Hole		1		58		2,233.00		2,262.00		5/14/2008			

Well Name: **STONE 02-23**

VERTICAL - Original Hole, 12/20/2012 1:11:40 PM

Stimulations & Treatments

Bnch/Stg	Date	Zone	Primary Job Type
	5/19/2008	NIOBRARA, Original Hole	RE-FRAC
Comment REFRAC'D NIOBRARA W/ 500 GAL 7.5% HCL ACID BREAKDOWN, 15000 GALS 25% CO2 GEL PAD, 45227 GALS 25% CO2 FOAM GEL, 100,180 LBS 16/30 SAND, ATP: 885 PSI, ATR: 13.7 BPM. OLD PERFS- 43 HOLES FROM 2232-2262'. TOTAL NUMBER OF HOLES- 101.			
Total Add Amount		Total Clean Volume...	Vol Slurry Tot (gal)
Avg Treat Pressure (psi)		Max Treat Pressure (psi)	Avg Treat Rate (bbl/min)
885.0		1,459.0	13.70
			Max Treat Rate (bbl/min)
			18.90

Other In Hole

Run Date	Des	OD (in)	Top (ftKB)	Btm (ftKB)

Logs

Date	Type	Top (ftKB)	Btm (ftKB)
1/26/1992	DUAL INDUCTION	348.0	2,126.0
1/27/1992	COMPENSATED NEUTRON	1,875.0	2,318.0

