

R. 102 W.

R. 101 W.

00606541

DRAGON TRAIL UNIT

DRAGON TRAIL

EAST FIELD

PROPOSED LOCATION

T. 2 S.

T. 3 S.

CONOCO INC.
Cause No. 1
Docket No. 5-4
Exhibit No. 1

- LEGEND**
- Location
 - ⊗ Gas Well
 - ⊗ Gas Well—Shut-In
 - ⊗ Gas Well—Abandoned
 - Dry Hole

DOUGLAS CREEK UNIT



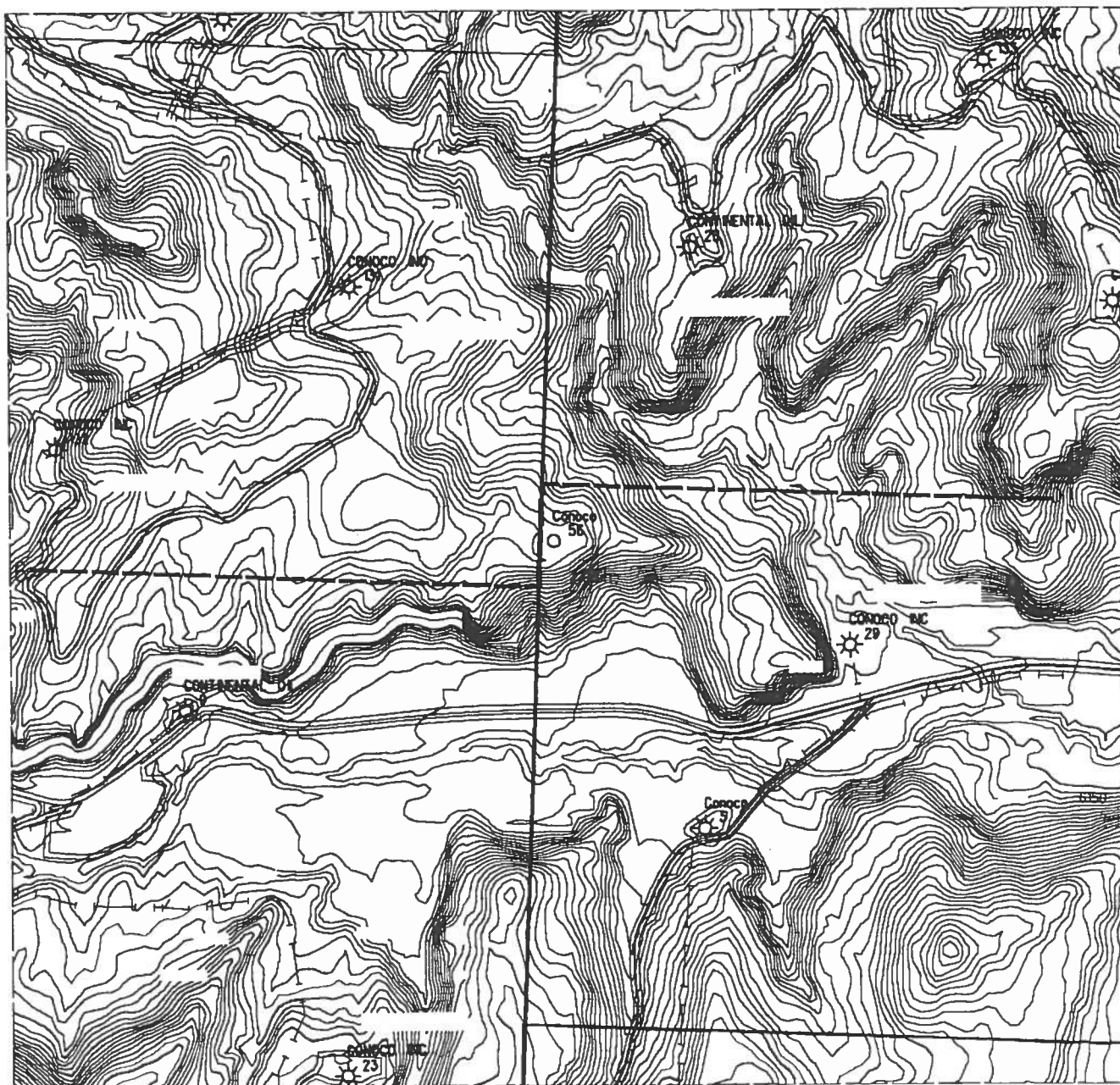
Casper Division

North American E & P

DOUGLAS CREEK UNIT

Rio Blanco Colorado

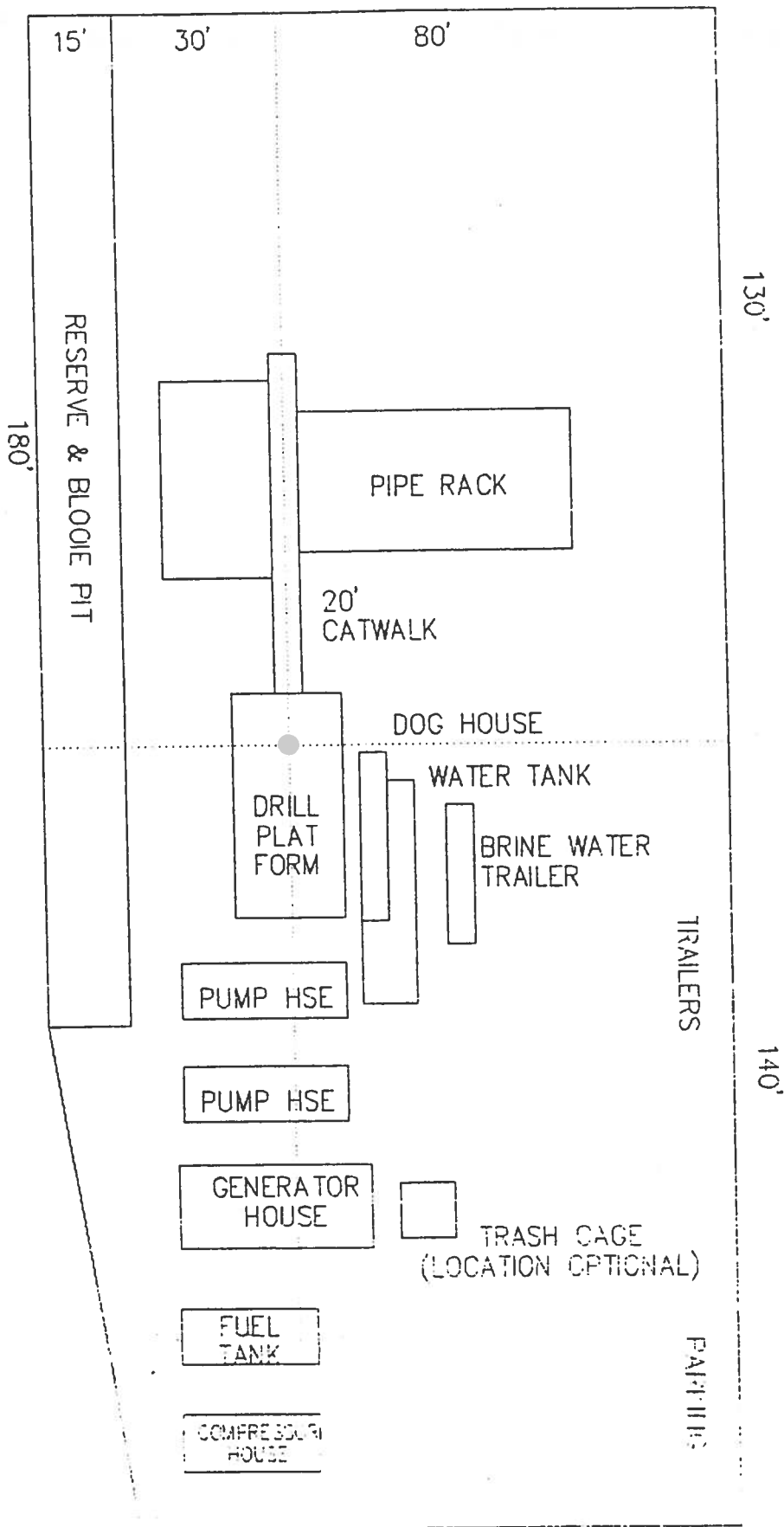
Wellb To: 5-12-92



DOUGLAS CREEK UNIT

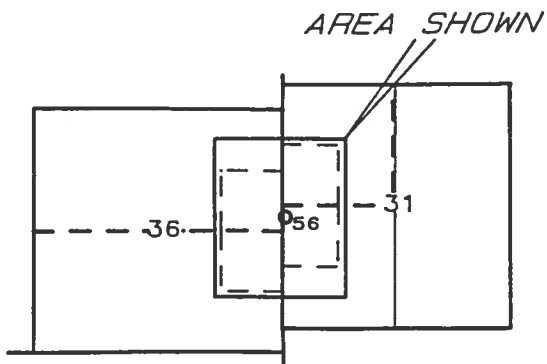
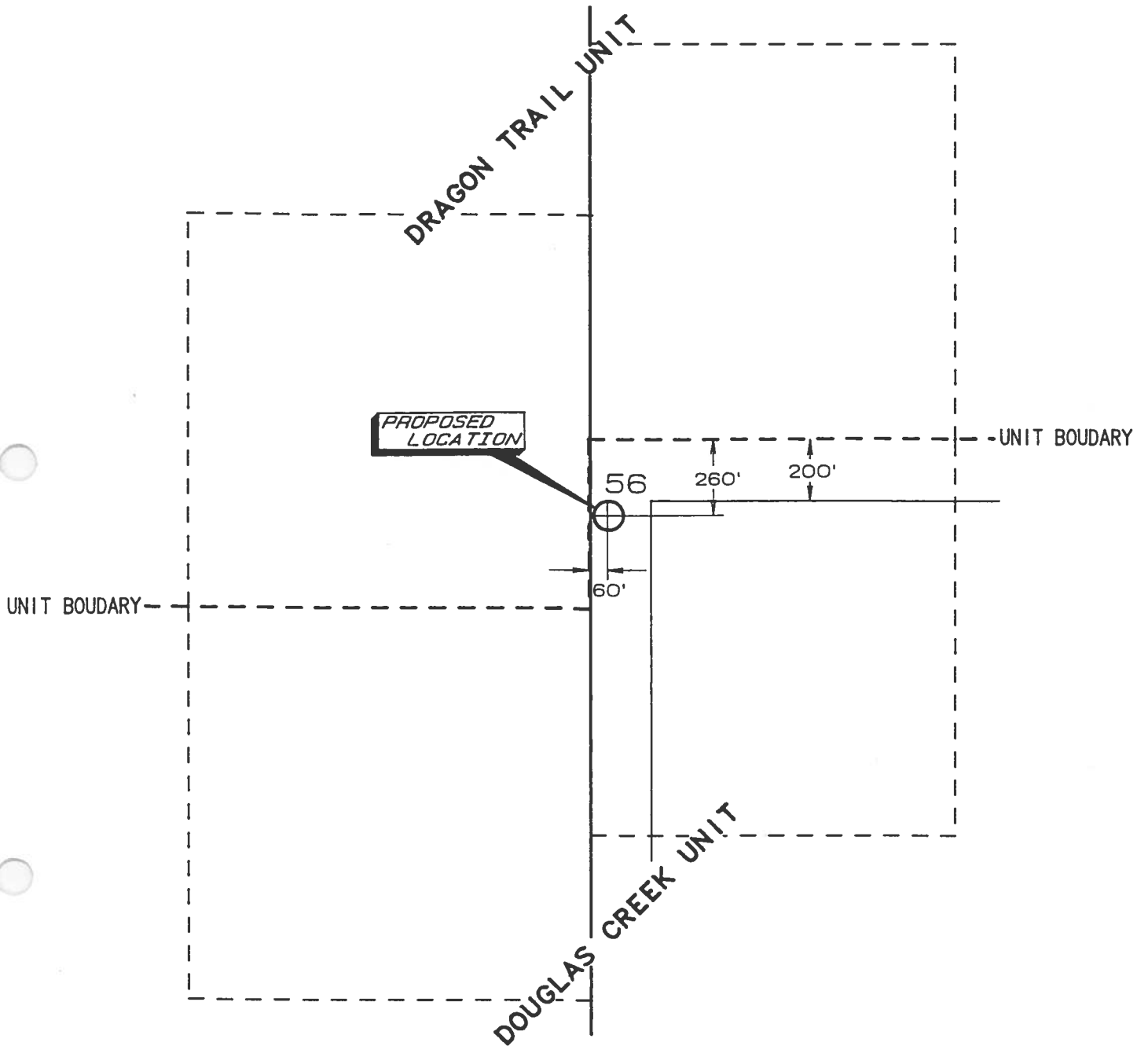
**CONOCO INC.
Cause No. 1
Docket No. 5-4
Exhibit No. 2**

00606543

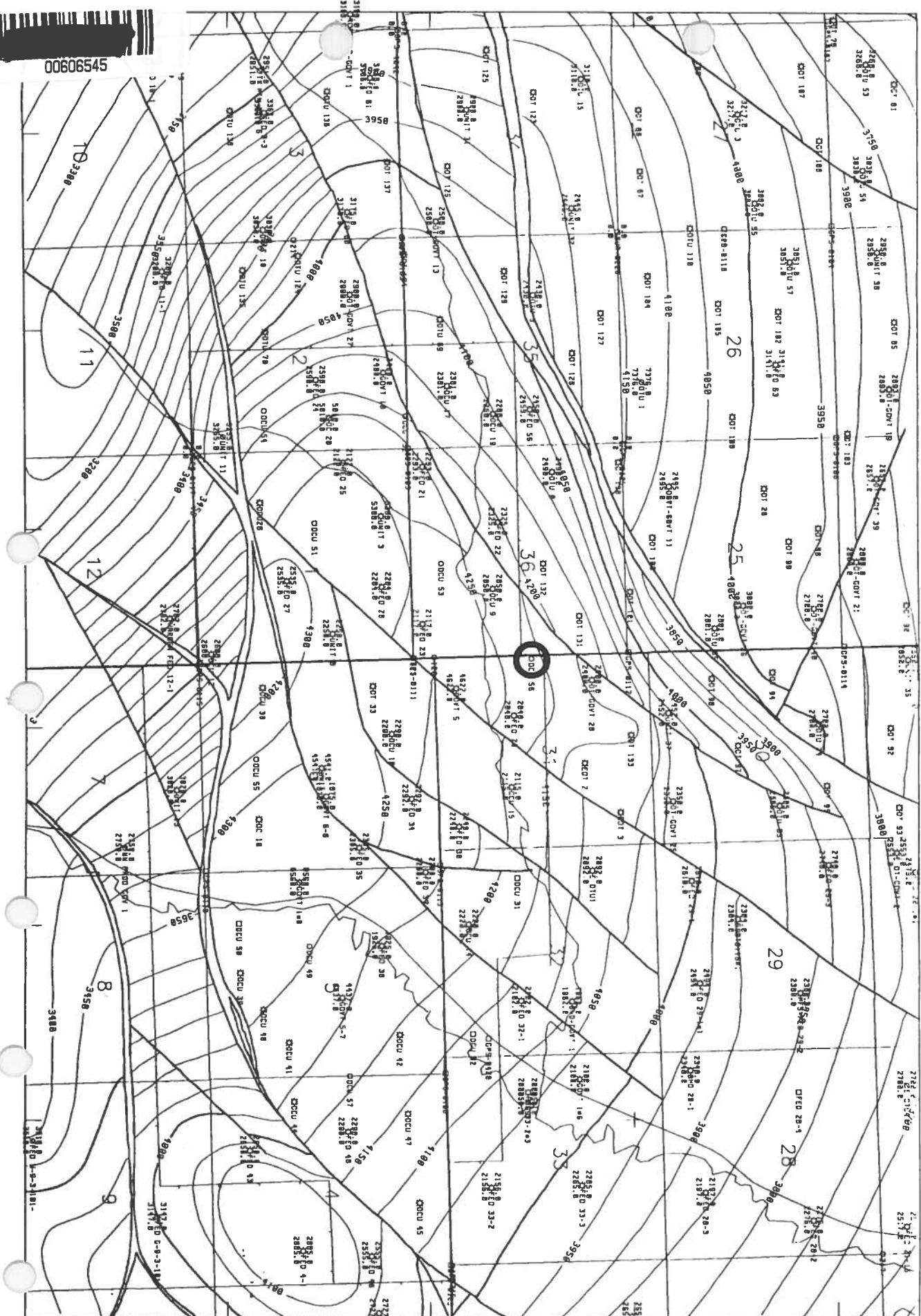


CONOCO INC.
Cause No. 1
Docket No. 5-4
Exhibit No. 2-A

PLAT #
RIG 1A 1111



conoco	
Casper Division	North American E & P
DOUGLAS CREEK UNIT	
Proposed Location Detail	
Rio Blanco Colorado	
CONOCO INC	
Cause No. 1	
Docket No. 5-4	
Exhibit No. 12	
DATE : 5-12-92	



00606545

PROJECT: DRAGON TRAIL FIELD
AREA / PROJECTION: HEMISPHERIC
MAP TYPE: BASEMAP PLOT

EPNG - NORTH AMERICAN
CASPER WYOMING

DOUGLAS CREEK UNIT
Structure Map Base Of Mancos B
CONOCO INC.
Cause No. 1
Docket No. 5-4
Exhibit No. 13

PROJECTION: UTM SPHEROID: CLAS ZONE: 12
CENTRAL MERIDIAN: 111.00 HEMISPHERE: N

SCALE: 1:150000



00606540

CONOCO INC.

Cause No. 1
Docket No. 5-4

EXHIBITS