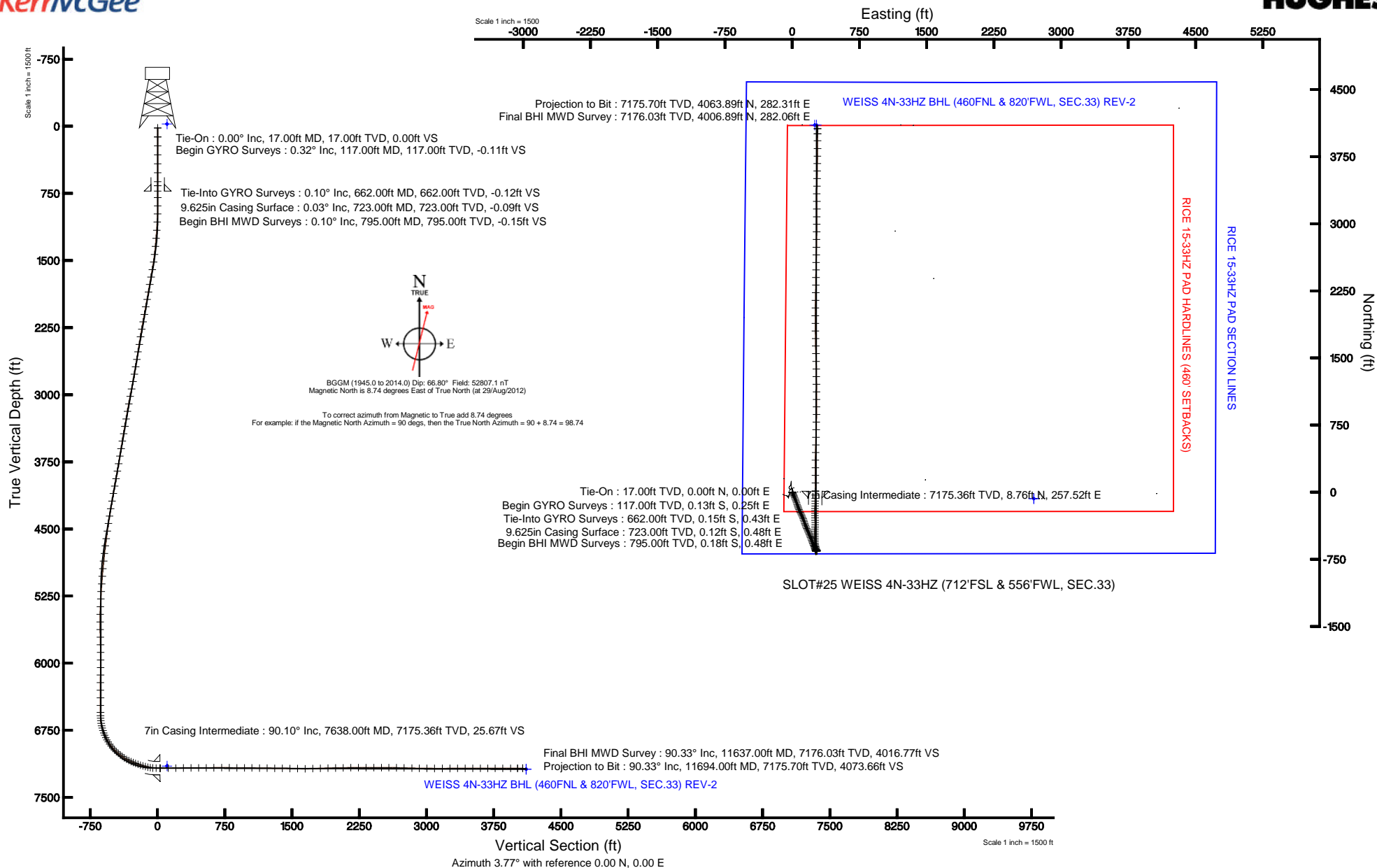


KERR-MCGEE OIL & GAS ONSHORE LP

Location: COLORADO Slot: SLOT#25 WEISS 4N-33HZ (712'FSL & 556'FWL, SEC.33)
Field: WELD COUNTY (KERR MCGEE) Well: WEISS 4N-33HZ
Facility: SEC.33-T3N-R66W Wellbore: WEISS 4N-33HZ PWB

Plot reference wellpath is WEISS 4N-33HZ (REV-B.0) PWP

True vertical depths are referenced to XTREME 6 (RKB)	Grid System: NAD83 / Lambert Colorado SP, Northern Zone (501), US feet
Measured depths are referenced to XTREME 6 (RKB)	North Reference: True north
XTREME 6 (RKB) to Mean Sea Level: 4931 feet	Scale: True distance
Mean Sea Level to Mud line (At Slot: SLOT#25 WEISS 4N-33HZ (712'FSL & 556'FWL, SEC.33)): 0 feet	Depths are in feet
Coordinates are in feet referenced to Slot	Created by: augunora on 16/Nov/2012





Actual Wellpath Report

WEISS 4N-33HZ AWP

Page 1 of 7



REFERENCE WELLPATH IDENTIFICATION

Operator	KERR-MCGEE OIL & GAS ONSHORE LP	Slot	SLOT#25 WEISS 4N-33HZ (712'FSL & 556'FWL, SEC.33)
Area	COLORADO	Well	WEISS 4N-33HZ
Field	WELD COUNTY (KERR MCGEE)	Wellbore	WEISS 4N-33HZ AWB
Facility	SEC.33-T3N-R66W		

REPORT SETUP INFORMATION

Projection System	NAD83 / Lambert Colorado SP, Northern Zone (501), US feet	Software System	WellArchitect® 3.0.0
North Reference	True	User	Augunora
Scale	0.999958	Report Generated	16/Nov/2012 at 11:23
Convergence at slot	0.46° East	Database/Source file	WA_ANADARKO/WEISS_4N-33HZ_AWB.xml

WELLPATH LOCATION

	Local coordinates		Grid coordinates		Geographic coordinates	
	North[ft]	East[ft]	Easting[US ft]	Northing[US ft]	Latitude	Longitude
Slot Location	73.82	-2695.76	3198493.73	1307811.60	40°10'34.162"N	104°47'22.704"W
Facility Reference Pt			3201189.88	1307759.68	40°10'33.434"N	104°46'47.975"W
Field Reference Pt			3197771.84	1268891.29	40°04'09.600"N	104°47'36.000"W

WELLPATH DATUM

Calculation method	Minimum curvature	XTREME 6 (RKB) to Facility Vertical Datum
Horizontal Reference Pt	Slot	XTREME 6 (RKB) to Mean Sea Level
Vertical Reference Pt	XTREME 6 (RKB)	XTREME 6 (RKB) to Mud Line at Slot (SLOT#25 WEISS 4N-33HZ (712'FSL & 556'FWL, S
MD Reference Pt	XTREME 6 (RKB)	Section Origin
Field Vertical Reference	Mean Sea Level	Section Azimuth



Actual Wellpath Report

WEISS 4N-33HZ AWP

Page 2 of 7



REFERENCE WELLPATH IDENTIFICATION

Operator	KERR-MCGEE OIL & GAS ONSHORE LP	Slot	SLOT#25 WEISS 4N-33HZ (712'FSL & 556'FWL, SEC.33)
Area	COLORADO	Well	WEISS 4N-33HZ
Field	WELD COUNTY (KERR MCGEE)	Wellbore	WEISS 4N-33HZ AWP
Facility	SEC.33-T3N-R66W		

WELLPATH DATA (162 stations) † = interpolated/extrapolated station

MD [ft]	Inclination [°]	Azimuth [°]	TVD [ft]	Vert Sect [ft]	North [ft]	East [ft]	Latitude	Longitude	DLS [°/100ft]	Comments
0.00†	0.000	117.820	0.00	0.00	0.00	0.00	40°10'34.162"N	104°47'22.704"W	0.00	
17.00	0.000	117.820	17.00	0.00	0.00	0.00	40°10'34.162"N	104°47'22.704"W	0.00	Tie-On
117.00	0.320	117.820	117.00	-0.11	-0.13	0.25	40°10'34.161"N	104°47'22.701"W	0.32	Begin GYRO Surveys
217.00	0.190	186.380	217.00	-0.39	-0.43	0.48	40°10'34.158"N	104°47'22.698"W	0.31	
317.00	0.040	253.850	317.00	-0.57	-0.60	0.42	40°10'34.156"N	104°47'22.699"W	0.18	
417.00	0.060	325.690	417.00	-0.54	-0.57	0.36	40°10'34.156"N	104°47'22.699"W	0.06	
517.00	0.150	18.990	517.00	-0.37	-0.40	0.37	40°10'34.158"N	104°47'22.699"W	0.12	
617.00	0.080	348.830	617.00	-0.18	-0.21	0.40	40°10'34.160"N	104°47'22.699"W	0.09	
662.00	0.100	48.650	662.00	-0.12	-0.15	0.43	40°10'34.161"N	104°47'22.699"W	0.20	Tie-Into GYRO Surveys
795.00	0.100	198.260	795.00	-0.15	-0.18	0.48	40°10'34.160"N	104°47'22.698"W	0.15	Begin BHI MWD Surveys
887.00	0.220	1.320	887.00	-0.05	-0.08	0.46	40°10'34.161"N	104°47'22.698"W	0.34	
978.00	2.020	158.510	977.98	-1.33	-1.40	1.05	40°10'34.148"N	104°47'22.691"W	2.44	
1069.00	3.090	161.670	1068.89	-5.04	-5.22	2.41	40°10'34.110"N	104°47'22.673"W	1.19	
1161.00	4.090	157.600	1160.71	-10.28	-10.61	4.44	40°10'34.057"N	104°47'22.647"W	1.12	
1251.00	5.240	160.050	1250.41	-16.91	-17.44	7.06	40°10'33.990"N	104°47'22.613"W	1.30	
1342.00	6.130	151.360	1340.96	-24.80	-25.61	10.81	40°10'33.909"N	104°47'22.565"W	1.36	
1433.00	7.920	153.250	1431.27	-34.28	-35.47	15.96	40°10'33.811"N	104°47'22.498"W	1.98	
1518.00	9.660	157.040	1515.27	-45.68	-47.27	21.38	40°10'33.695"N	104°47'22.429"W	2.16	
1604.00	10.550	161.960	1599.94	-59.41	-61.40	26.63	40°10'33.555"N	104°47'22.361"W	1.44	
1689.00	11.130	158.540	1683.42	-74.03	-76.44	32.04	40°10'33.407"N	104°47'22.291"W	1.02	
1774.00	10.640	160.660	1766.89	-88.65	-91.48	37.64	40°10'33.258"N	104°47'22.219"W	0.74	
1859.00	10.700	161.350	1850.43	-103.14	-106.36	42.76	40°10'33.111"N	104°47'22.153"W	0.17	
1944.00	11.570	159.660	1933.82	-118.19	-121.83	48.25	40°10'32.958"N	104°47'22.082"W	1.09	
2029.00	11.170	160.130	2017.16	-133.49	-137.56	54.01	40°10'32.803"N	104°47'22.008"W	0.48	
2114.00	10.990	160.370	2100.57	-148.44	-152.94	59.53	40°10'32.651"N	104°47'21.937"W	0.22	
2199.00	10.730	160.380	2184.05	-163.12	-168.02	64.91	40°10'32.502"N	104°47'21.868"W	0.31	
2284.00	10.200	160.900	2267.64	-177.29	-182.59	70.03	40°10'32.358"N	104°47'21.802"W	0.63	
2369.00	10.790	157.060	2351.21	-191.31	-197.02	75.59	40°10'32.215"N	104°47'21.730"W	1.08	
2455.00	10.240	158.740	2435.77	-205.41	-211.56	81.50	40°10'32.071"N	104°47'21.654"W	0.73	
2540.00	10.340	152.950	2519.40	-218.78	-225.40	87.71	40°10'31.935"N	104°47'21.574"W	1.22	
2626.00	11.010	153.150	2603.92	-232.44	-239.60	94.93	40°10'31.794"N	104°47'21.481"W	0.78	
2710.00	10.710	152.010	2686.41	-245.95	-253.65	102.22	40°10'31.655"N	104°47'21.387"W	0.44	
2796.00	11.410	156.180	2770.81	-260.26	-268.49	109.40	40°10'31.509"N	104°47'21.295"W	1.24	
2879.00	11.700	155.840	2852.13	-274.94	-283.67	116.16	40°10'31.359"N	104°47'21.207"W	0.36	
2964.00	11.620	161.230	2935.38	-290.44	-299.64	122.45	40°10'31.201"N	104°47'21.127"W	1.28	
3049.00	11.290	163.970	3018.69	-306.15	-315.75	127.50	40°10'31.042"N	104°47'21.061"W	0.75	
3135.00	11.650	161.420	3102.97	-322.08	-332.07	132.59	40°10'30.880"N	104°47'20.996"W	0.72	
3220.00	10.690	161.080	3186.36	-337.27	-347.66	137.88	40°10'30.726"N	104°47'20.928"W	1.13	
3305.00	10.280	161.650	3269.94	-351.55	-362.32	142.82	40°10'30.582"N	104°47'20.864"W	0.50	
3390.00	10.700	157.320	3353.52	-365.62	-376.80	148.26	40°10'30.438"N	104°47'20.794"W	1.05	
3473.00	11.010	156.600	3435.04	-379.54	-391.18	154.37	40°10'30.296"N	104°47'20.715"W	0.41	
3558.00	10.340	156.160	3518.56	-393.50	-405.61	160.68	40°10'30.154"N	104°47'20.634"W	0.79	
3644.00	11.140	154.860	3603.06	-407.58	-420.19	167.33	40°10'30.010"N	104°47'20.548"W	0.97	
3729.00	10.050	157.790	3686.61	-421.41	-434.49	173.62	40°10'29.868"N	104°47'20.467"W	1.43	
3814.00	10.800	158.340	3770.20	-435.25	-448.76	179.36	40°10'29.727"N	104°47'20.393"W	0.89	



Actual Wellpath Report

WEISS 4N-33HZ AWP

Page 3 of 7



REFERENCE WELLPATH IDENTIFICATION

Operator	KERR-MCGEE OIL & GAS ONSHORE LP	Slot	SLOT#25 WEISS 4N-33HZ (712'FSL & 556'FWL, SEC.33)
Area	COLORADO	Well	WEISS 4N-33HZ
Field	WELD COUNTY (KERR MCGEE)	Wellbore	WEISS 4N-33HZ AWP
Facility	SEC.33-T3N-R66W		

WELLPATH DATA (162 stations)

MD [ft]	Inclination [°]	Azimuth [°]	TVD [ft]	Vert Sect [ft]	North [ft]	East [ft]	Latitude	Longitude	DLS [°/100ft]	Comments
3899.00	11.530	155.600	3853.60	-449.90	-463.89	185.81	40°10'29.578"N	104°47'20.310"W	1.06	
3985.00	10.280	158.070	3938.04	-464.37	-478.84	192.23	40°10'29.430"N	104°47'20.228"W	1.55	
4070.00	11.540	157.820	4021.50	-478.82	-493.75	198.27	40°10'29.283"N	104°47'20.150"W	1.48	
4155.00	11.300	159.280	4104.82	-494.02	-509.41	204.43	40°10'29.128"N	104°47'20.070"W	0.44	
4241.00	10.650	159.440	4189.25	-508.90	-524.73	210.20	40°10'28.977"N	104°47'19.996"W	0.76	
4326.00	10.860	157.580	4272.75	-523.22	-539.49	216.01	40°10'28.831"N	104°47'19.921"W	0.48	
4411.00	9.340	159.380	4356.43	-536.67	-553.35	221.50	40°10'28.694"N	104°47'19.851"W	1.83	
4496.00	9.970	156.790	4440.23	-549.48	-566.57	226.83	40°10'28.563"N	104°47'19.782"W	0.90	
4582.00	8.960	157.970	4525.06	-562.13	-579.62	232.27	40°10'28.434"N	104°47'19.712"W	1.20	
4666.00	7.940	156.040	4608.15	-573.13	-590.98	237.08	40°10'28.322"N	104°47'19.650"W	1.26	
4749.00	7.680	157.060	4690.38	-583.14	-601.33	241.57	40°10'28.220"N	104°47'19.592"W	0.35	
4834.00	7.130	158.730	4774.67	-592.98	-611.47	245.70	40°10'28.119"N	104°47'19.539"W	0.69	
4919.00	6.410	160.130	4859.07	-602.09	-620.85	249.23	40°10'28.027"N	104°47'19.493"W	0.87	
5005.00	5.570	162.200	4944.60	-610.36	-629.34	252.13	40°10'27.943"N	104°47'19.456"W	1.01	
5090.00	4.950	165.790	5029.25	-617.67	-636.82	254.29	40°10'27.869"N	104°47'19.428"W	0.83	
5175.00	4.610	164.300	5113.95	-624.37	-643.67	256.12	40°10'27.801"N	104°47'19.405"W	0.43	
5260.00	3.450	155.580	5198.74	-629.84	-649.29	258.10	40°10'27.746"N	104°47'19.379"W	1.54	
5345.00	2.840	158.310	5283.61	-633.99	-653.57	259.94	40°10'27.703"N	104°47'19.355"W	0.74	
5431.00	2.530	179.720	5369.52	-637.80	-657.45	260.73	40°10'27.665"N	104°47'19.345"W	1.21	
5516.00	1.670	148.410	5454.46	-640.68	-660.38	261.39	40°10'27.636"N	104°47'19.337"W	1.65	
5602.00	0.890	95.260	5540.44	-641.71	-661.51	262.71	40°10'27.625"N	104°47'19.320"W	1.56	
5687.00	1.440	28.280	5625.43	-640.75	-660.63	263.88	40°10'27.634"N	104°47'19.305"W	1.61	
5772.00	1.520	31.880	5710.40	-638.78	-658.73	264.98	40°10'27.652"N	104°47'19.290"W	0.14	
5857.00	0.860	46.600	5795.38	-637.32	-657.34	266.04	40°10'27.666"N	104°47'19.277"W	0.85	
5942.00	1.230	66.920	5880.37	-636.43	-656.54	267.34	40°10'27.674"N	104°47'19.260"W	0.61	
6027.00	0.680	130.150	5965.36	-636.32	-656.51	268.56	40°10'27.674"N	104°47'19.244"W	1.30	
6112.00	0.670	108.050	6050.35	-636.74	-656.99	269.42	40°10'27.670"N	104°47'19.233"W	0.30	
6195.00	0.990	121.510	6133.34	-637.19	-657.51	270.49	40°10'27.664"N	104°47'19.219"W	0.45	
6279.00	1.110	101.370	6217.33	-637.63	-658.05	271.91	40°10'27.659"N	104°47'19.201"W	0.46	
6365.00	0.690	80.190	6303.32	-637.61	-658.13	273.24	40°10'27.658"N	104°47'19.184"W	0.62	
6450.00	0.660	105.070	6388.31	-637.58	-658.17	274.21	40°10'27.658"N	104°47'19.171"W	0.34	
6535.00	0.310	104.610	6473.31	-637.72	-658.35	274.91	40°10'27.656"N	104°47'19.162"W	0.41	
6613.00	0.430	37.760	6551.31	-637.51	-658.17	275.29	40°10'27.658"N	104°47'19.158"W	0.54	
6650.00	0.690	24.280	6588.31	-637.19	-657.86	275.47	40°10'27.661"N	104°47'19.155"W	0.78	
6678.00	3.010	346.640	6616.29	-636.33	-656.99	275.37	40°10'27.670"N	104°47'19.157"W	8.93	
6706.00	6.650	345.440	6644.19	-634.09	-654.71	274.79	40°10'27.692"N	104°47'19.164"W	13.00	
6735.00	10.470	343.340	6672.86	-630.03	-650.56	273.61	40°10'27.733"N	104°47'19.179"W	13.21	
6763.00	13.870	341.180	6700.23	-624.55	-644.94	271.80	40°10'27.789"N	104°47'19.203"W	12.25	
6791.00	16.440	337.650	6727.25	-617.91	-638.10	269.21	40°10'27.856"N	104°47'19.236"W	9.75	
6820.00	19.420	338.530	6754.84	-609.87	-629.81	265.89	40°10'27.938"N	104°47'19.279"W	10.32	
6848.00	21.700	341.120	6781.05	-600.90	-620.58	262.51	40°10'28.029"N	104°47'19.322"W	8.77	
6876.00	23.890	345.460	6806.87	-590.75	-610.19	259.41	40°10'28.132"N	104°47'19.362"W	9.86	
6905.00	26.270	350.280	6833.13	-578.94	-598.18	256.85	40°10'28.251"N	104°47'19.395"W	10.81	
6933.00	29.540	354.210	6857.88	-566.12	-585.20	255.11	40°10'28.379"N	104°47'19.418"W	13.39	
6961.00	32.760	356.200	6881.84	-551.80	-570.77	253.91	40°10'28.522"N	104°47'19.433"W	12.07	



Actual Wellpath Report

WEISS 4N-33HZ AWP

Page 4 of 7



REFERENCE WELLPATH IDENTIFICATION

Operator	KERR-MCGEE OIL & GAS ONSHORE LP	Slot	SLOT#25 WEISS 4N-33HZ (712'FSL & 556'FWL, SEC.33)
Area	COLORADO	Well	WEISS 4N-33HZ
Field	WELD COUNTY (KERR MCGEE)	Wellbore	WEISS 4N-33HZ AWP
Facility	SEC.33-T3N-R66W		

WELLPATH DATA (162 stations) † = interpolated/extrapolated station

MD [ft]	Inclination [°]	Azimuth [°]	TVD [ft]	Vert Sect [ft]	North [ft]	East [ft]	Latitude	Longitude	DLS [°/100ft]	Comments
6991.00	35.700	357.730	6906.64	-535.06	-553.92	253.02	40°10'28.688"N	104°47'19.444"W	10.21	
7019.00	38.330	359.180	6928.99	-518.28	-537.07	252.57	40°10'28.855"N	104°47'19.450"W	9.90	
7047.00	41.110	0.320	6950.53	-500.44	-519.18	252.50	40°10'29.031"N	104°47'19.451"W	10.26	
7076.00	44.130	0.180	6971.87	-480.84	-499.55	252.59	40°10'29.225"N	104°47'19.450"W	10.42	
7104.00	47.340	0.160	6991.41	-460.84	-479.50	252.65	40°10'29.424"N	104°47'19.449"W	11.46	
7132.00	50.150	1.090	7009.87	-439.83	-458.46	252.88	40°10'29.632"N	104°47'19.446"W	10.34	
7161.00	52.590	1.670	7027.97	-417.20	-435.81	253.43	40°10'29.855"N	104°47'19.439"W	8.56	
7189.00	53.970	1.550	7044.71	-394.77	-413.37	254.06	40°10'30.077"N	104°47'19.431"W	4.94	
7217.00	56.590	1.320	7060.66	-371.78	-390.37	254.63	40°10'30.304"N	104°47'19.424"W	9.38	
7246.00	59.940	0.940	7075.91	-347.15	-365.71	255.12	40°10'30.548"N	104°47'19.417"W	11.61	
7274.00	63.120	359.630	7089.26	-322.60	-341.10	255.24	40°10'30.791"N	104°47'19.416"W	12.08	
7302.00	65.800	358.900	7101.33	-297.42	-315.84	254.91	40°10'31.041"N	104°47'19.420"W	9.86	
7330.00	68.090	359.220	7112.29	-271.75	-290.09	254.49	40°10'31.295"N	104°47'19.426"W	8.25	
7358.00	69.160	358.920	7122.50	-245.77	-264.02	254.06	40°10'31.553"N	104°47'19.431"W	3.95	
7386.00	70.410	358.190	7132.17	-219.62	-237.75	253.40	40°10'31.813"N	104°47'19.440"W	5.09	
7416.00	72.000	0.550	7141.84	-191.31	-209.35	253.09	40°10'32.093"N	104°47'19.444"W	9.14	
7444.00	74.430	2.660	7149.93	-164.53	-182.56	253.85	40°10'32.358"N	104°47'19.434"W	11.29	
7472.00	75.490	2.710	7157.19	-137.50	-155.55	255.11	40°10'32.625"N	104°47'19.417"W	3.79	
7501.00	77.220	1.420	7164.03	-109.33	-127.39	256.13	40°10'32.903"N	104°47'19.404"W	7.37	
7529.00	80.580	0.880	7169.42	-81.89	-99.92	256.68	40°10'33.175"N	104°47'19.397"W	12.15	
7557.00	84.320	0.050	7173.10	-54.19	-72.17	256.90	40°10'33.449"N	104°47'19.394"W	13.68	
7595.00	89.410	0.560	7175.18	-16.34	-34.24	257.10	40°10'33.824"N	104°47'19.392"W	13.46	
7638.00†	90.102	0.560	7175.36	26.58	8.76	257.52	40°10'34.249"N	104°47'19.386"W	1.61	7" Casing Point
7641.00	90.150	0.560	7175.36	29.58	11.76	257.55	40°10'34.278"N	104°47'19.386"W	1.61	
7730.00	90.430	0.290	7174.91	118.40	100.75	258.21	40°10'35.158"N	104°47'19.377"W	0.44	
7815.00	90.550	359.730	7174.18	203.20	185.75	258.23	40°10'35.998"N	104°47'19.377"W	0.67	
7901.00	91.100	0.060	7172.94	288.97	271.74	258.07	40°10'36.847"N	104°47'19.379"W	0.75	
7986.00	90.700	0.370	7171.61	373.78	356.73	258.39	40°10'37.687"N	104°47'19.375"W	0.60	
8071.00	89.900	1.890	7171.16	458.67	441.71	260.07	40°10'38.527"N	104°47'19.354"W	2.02	
8156.00	90.150	1.470	7171.12	543.60	526.67	262.56	40°10'39.367"N	104°47'19.321"W	0.58	
8241.00	90.640	1.440	7170.54	628.51	611.64	264.72	40°10'40.206"N	104°47'19.294"W	0.58	
8327.00	90.060	1.610	7170.01	714.43	697.61	267.00	40°10'41.056"N	104°47'19.264"W	0.70	
8412.00	89.130	0.880	7170.61	799.33	782.58	268.85	40°10'41.895"N	104°47'19.240"W	1.39	
8497.00	89.660	1.490	7171.51	884.23	867.56	270.61	40°10'42.735"N	104°47'19.218"W	0.95	
8582.00	89.470	359.670	7172.16	969.07	952.55	271.47	40°10'43.575"N	104°47'19.207"W	2.15	
8665.00	89.690	359.460	7172.76	1051.82	1035.55	270.84	40°10'44.395"N	104°47'19.215"W	0.37	
8750.00	89.130	359.880	7173.64	1136.58	1120.54	270.35	40°10'45.235"N	104°47'19.221"W	0.82	
8835.00	89.100	359.280	7174.95	1221.32	1205.53	269.73	40°10'46.075"N	104°47'19.229"W	0.71	
8921.00	89.220	359.500	7176.21	1307.04	1291.51	268.81	40°10'46.925"N	104°47'19.241"W	0.29	
9006.00	89.260	358.990	7177.34	1391.74	1376.50	267.69	40°10'47.765"N	104°47'19.255"W	0.60	
9091.00	89.160	359.000	7178.51	1476.41	1461.48	266.20	40°10'48.604"N	104°47'19.274"W	0.12	
9177.00	88.670	358.560	7180.14	1562.04	1547.44	264.37	40°10'49.454"N	104°47'19.298"W	0.77	
9262.00	90.060	358.070	7181.08	1646.62	1632.40	261.87	40°10'50.293"N	104°47'19.330"W	1.73	
9347.00	91.660	359.580	7179.81	1731.26	1717.36	260.13	40°10'51.133"N	104°47'19.353"W	2.59	
9432.00	91.940	359.150	7177.14	1815.94	1802.32	259.19	40°10'51.972"N	104°47'19.365"W	0.60	



Actual Wellpath Report

WEISS 4N-33HZ AWP

Page 5 of 7



REFERENCE WELLPATH IDENTIFICATION

Operator	KERR-MCGEE OIL & GAS ONSHORE LP	Slot	SLOT#25 WEISS 4N-33HZ (712'FSL & 556'FWL, SEC.33)
Area	COLORADO	Well	WEISS 4N-33HZ
Field	WELD COUNTY (KERR MCGEE)	Wellbore	WEISS 4N-33HZ AWB
Facility	SEC.33-T3N-R66W		

WELLPATH DATA (162 stations)

MD [ft]	Inclination [°]	Azimuth [°]	TVD [ft]	Vert Sect [ft]	North [ft]	East [ft]	Latitude	Longitude	DLS [°/100ft]	Comments
9517.00	91.320	359.520	7174.72	1900.63	1887.27	258.20	40°10'52.812"N	104°47'19.377"W	0.85	
9602.00	90.980	359.410	7173.01	1985.35	1972.25	257.41	40°10'53.652"N	104°47'19.388"W	0.42	
9688.00	91.320	1.020	7171.29	2071.15	2058.23	257.73	40°10'54.501"N	104°47'19.383"W	1.91	
9773.00	90.270	1.800	7170.11	2156.05	2143.20	259.82	40°10'55.341"N	104°47'19.356"W	1.54	
9858.00	90.520	1.260	7169.52	2240.97	2228.16	262.09	40°10'56.181"N	104°47'19.327"W	0.70	
9943.00	89.560	0.740	7169.46	2325.85	2313.15	263.57	40°10'57.021"N	104°47'19.308"W	1.28	
10029.00	89.960	0.340	7169.82	2411.70	2399.15	264.38	40°10'57.870"N	104°47'19.298"W	0.66	
10114.00	90.490	0.680	7169.49	2496.54	2484.14	265.14	40°10'58.710"N	104°47'19.288"W	0.74	
10198.00	89.780	0.990	7169.29	2580.42	2568.13	266.36	40°10'59.540"N	104°47'19.272"W	0.92	
10283.00	88.450	1.170	7170.60	2665.30	2653.10	267.97	40°11'00.380"N	104°47'19.251"W	1.58	
10368.00	88.580	1.070	7172.81	2750.16	2738.06	269.63	40°11'01.220"N	104°47'19.230"W	0.19	
10454.00	88.670	0.780	7174.87	2836.02	2824.02	271.02	40°11'02.069"N	104°47'19.212"W	0.35	
10539.00	88.980	0.760	7176.61	2920.86	2909.00	272.16	40°11'02.909"N	104°47'19.197"W	0.37	
10624.00	89.500	0.670	7177.74	3005.72	2993.98	273.22	40°11'03.749"N	104°47'19.184"W	0.62	
10709.00	89.780	0.410	7178.27	3090.56	3078.98	274.02	40°11'04.588"N	104°47'19.173"W	0.45	
10795.00	90.120	0.150	7178.35	3176.39	3164.98	274.44	40°11'05.438"N	104°47'19.168"W	0.50	
10880.00	90.300	359.710	7178.04	3261.17	3249.98	274.34	40°11'06.278"N	104°47'19.169"W	0.56	
10965.00	90.950	0.070	7177.11	3345.95	3334.97	274.17	40°11'07.118"N	104°47'19.171"W	0.87	
11050.00	89.470	1.250	7176.80	3430.81	3419.96	275.15	40°11'07.958"N	104°47'19.159"W	2.23	
11135.00	89.750	0.960	7177.38	3515.70	3504.94	276.79	40°11'08.798"N	104°47'19.138"W	0.47	
11220.00	89.900	0.770	7177.64	3600.57	3589.93	278.07	40°11'09.638"N	104°47'19.121"W	0.28	
11303.00	90.180	1.080	7177.58	3683.45	3672.92	279.41	40°11'10.458"N	104°47'19.104"W	0.50	
11387.00	90.360	1.240	7177.18	3767.35	3756.90	281.11	40°11'11.288"N	104°47'19.082"W	0.29	
11472.00	90.180	359.950	7176.78	3852.20	3841.89	282.00	40°11'12.128"N	104°47'19.071"W	1.53	
11558.00	90.270	359.950	7176.45	3937.99	3927.89	281.92	40°11'12.977"N	104°47'19.071"W	0.10	
11637.00	90.330	0.250	7176.03	4016.81	4006.89	282.06	40°11'13.758"N	104°47'19.070"W	0.39	Final BHI MWD Survey
11694.00	90.330	0.250	7175.70	4073.69	4063.89	282.31	40°11'14.321"N	104°47'19.066"W	0.00	Projection to Bit

HOLE & CASING SECTIONS - Ref Wellbore: WEISS 4N-33HZ AWB Ref Wellpath: WEISS 4N-33HZ AWP

String/Diameter	Start MD [ft]	End MD [ft]	Interval [ft]	Start TVD [ft]	End TVD [ft]	Start N/S [ft]	Start E/W [ft]	End N/S [ft]	End E/W [ft]
13.5in Open Hole	17.00	723.00	706.00	17.00	723.00	0.00	0.00	-0.12	0.48
9.625in Casing Surface	17.00	723.00	706.00	17.00	723.00	0.00	0.00	-0.12	0.48
8.75in Open Hole	723.00	7641.00	6918.00	723.00	7175.36	-0.12	0.48	11.76	257.55
7in Casing Intermediate	17.00	7638.00	7621.00	17.00	7175.36	0.00	0.00	8.76	257.52
6.125in Open Hole	7638.00	11694.00	4056.00	7175.36	7175.70	8.76	257.52	4063.89	282.31



Actual Wellpath Report

WEISS 4N-33HZ AWP

Page 6 of 7



REFERENCE WELLPATH IDENTIFICATION

Operator	KERR-MCGEE OIL & GAS ONSHORE LP	Slot	SLOT#25 WEISS 4N-33HZ (712'FSL & 556'FWL, SEC.33)
Area	COLORADO	Well	WEISS 4N-33HZ
Field	WELD COUNTY (KERR MCGEE)	Wellbore	WEISS 4N-33HZ AWB
Facility	SEC.33-T3N-R66W		

TARGETS

Name	MD [ft]	TVD [ft]	North [ft]	East [ft]	Grid East [US ft]	Grid North [US ft]	Latitude	Longitude	Shape
RICE 15-33HZ PAD SECTION LINES		-27.00	-73.52	2695.77	3201189.88	1307759.68	40°10'33.434"N	104°46'47.975"W	polygon
RICE 15-33HZ PAD HARDLINES (460' SETBACKS)		7151.00	-73.52	2695.77	3201189.88	1307759.68	40°10'33.434"N	104°46'47.975"W	polygon
WEISS 4N-33HZ BHL (460FNL & 820'FWL, SEC.33) REV-2		7187.00	4104.12	270.37	3198731.20	1311917.58	40°11'14.719"N	104°47'19.220"W	point
WEISS 4N-33HZ BHL ON PLAT (460LFNL & 800'FWL, SEC.33) REV-1		7187.00	4104.12	250.37	3198711.20	1311917.42	40°11'14.719"N	104°47'19.478"W	point

WELLPATH COMPOSITION - Ref Wellbore: WEISS 4N-33HZ AWB Ref Wellpath: WEISS 4N-33HZ AWP

Start MD [ft]	End MD [ft]	Positional Uncertainty Model	Log Name/Comment	Wellbore
17.00	662.00	Generic gyro - continuous (Standard)	GYRODATA SURVEYS <117-662>	WEISS 4N-33HZ AWB
662.00	7641.00	NaviTrak (MagCorr)	BHI MWD SURVEYS 8 3/4" HOLE <795-7641>	WEISS 4N-33HZ AWB
7641.00	11637.00	OnTrak (MagCorr)	BHI MWD SURVEYS 6 1/8" HOLE <7730-11637>	WEISS 4N-33HZ AWB
11637.00	11694.00	Blind Drilling (std)	Projection to bit	WEISS 4N-33HZ AWB



Actual Wellpath Report

WEISS 4N-33HZ AWP

Page 7 of 7



REFERENCE WELLPATH IDENTIFICATION

Operator	KERR-MCGEE OIL & GAS ONSHORE LP	Slot	SLOT#25 WEISS 4N-33HZ (712'FSL & 556'FWL, SEC.33)
Area	COLORADO	Well	WEISS 4N-33HZ
Field	WELD COUNTY (KERR MCGEE)	Wellbore	WEISS 4N-33HZ AWB
Facility	SEC.33-T3N-R66W		

WELLPATH COMMENTS

MD [ft]	Inclination [°]	Azimuth [°]	TVD [ft]	Comment
17.00	0.000	117.820	17.00	Tie-On
117.00	0.320	117.820	117.00	Begin GYRO Surveys
662.00	0.100	48.650	662.00	Tie-Into GYRO Surveys
795.00	0.100	198.260	795.00	Begin BHI MWD Surveys
7638.00	90.102	0.560	7175.36	7" Casing Point
11637.00	90.330	0.250	7176.03	Final BHI MWD Survey
11694.00	90.330	0.250	7175.70	Projection to Bit