

HALLIBURTON

BOREHOLE VOLUME  
PLOT

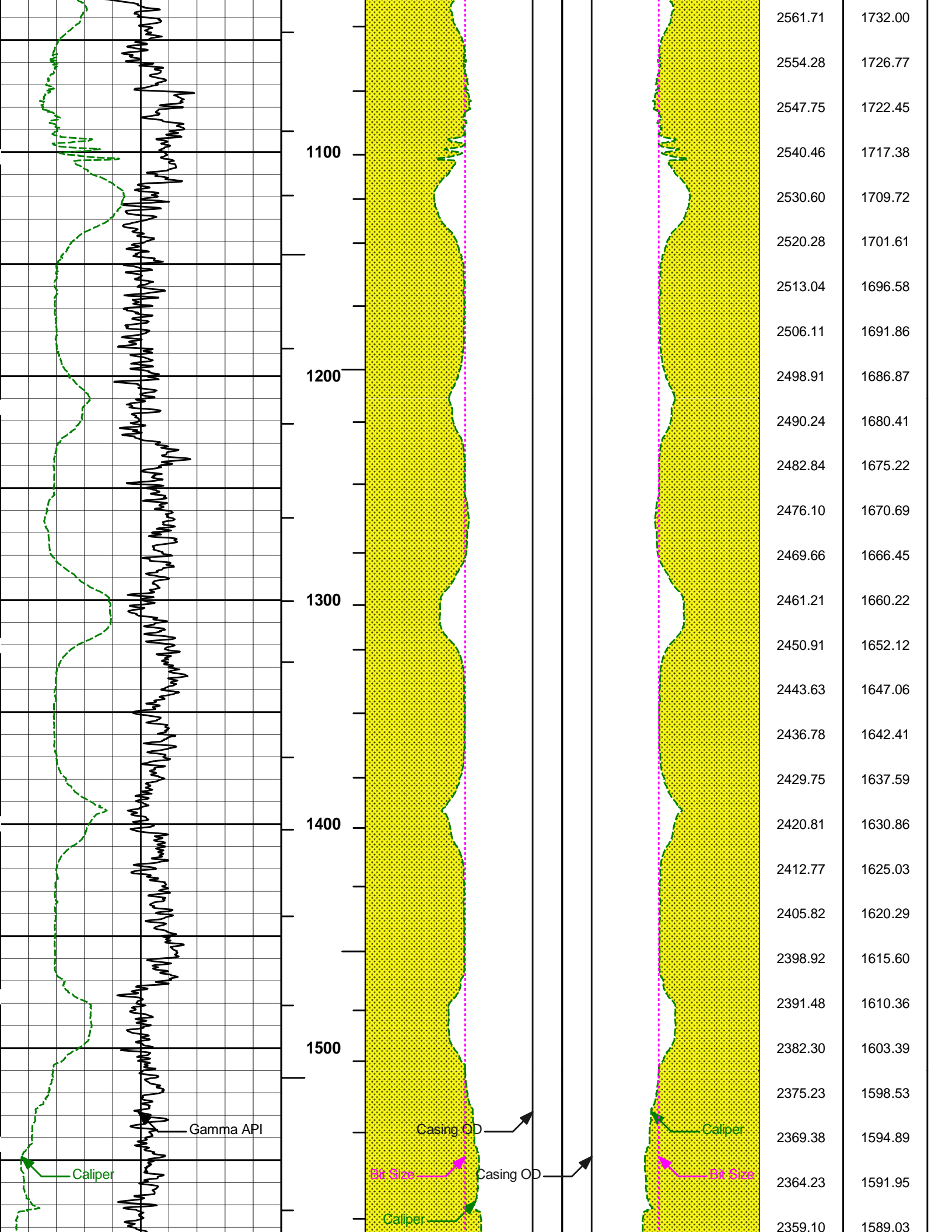
COMPANY		KERR-MCGEE OIL & GAS ONSHORE LP	
WELL		CAMENISCH 36-2	
FIELD		WATTENBERG	
COUNTY		WELD	
STATE		COLORADO	
Permanent Datum Log measured from		GL	Elev. 5031.0 ft
Drilling measured from		KB	15.0 ft above perm. Datum
		KB	Elev.: K.B. 5046.0 ft
			D.F. 5045.0 ft
			GL. 5031.0 ft
Date		06-Oct-12	
Run No.		ONE	
Depth - Driller		8587.00 ft	
Depth - Logger		8542.0 ft	
Bottom - Logged Interval		8513.0 ft	
Top - Logged Interval		910.0 ft	
Casing - Driller		8625.000 in @ 928.0 ft	
Casing - Logger		928.0 ft	
Bit Size		7.875 in	
Type Fluid in Hole		WBM	
Density		8.3 ppq	26.00 s/qt
PH		7.50 pH	
Source of Sample		MUD TANK	
Rm @ Meas. Temperature		1.640 ohmm @ 70.20 degF	@
Rmf @ Meas. Temperature		1.72 ohmm @ 68.40 degF	@
Rmc @ Meas. Temperature		2.400 ohmm @ 68.40 degF	@
Source Rmf		MEASURED	
Rm @ BHT		0.52 ohmm @ 237.0 degF	@
Time Since Circulation		11.1 hr	
Time on Bottom		06-Oct-12 06:34	
Max. Rec. Temperature		237.0 degF @ N/A	@
Equipment		11170614	ROCK SPRING
Recorded By		V. CREWS	
Witnessed By		T. GEDAMU	

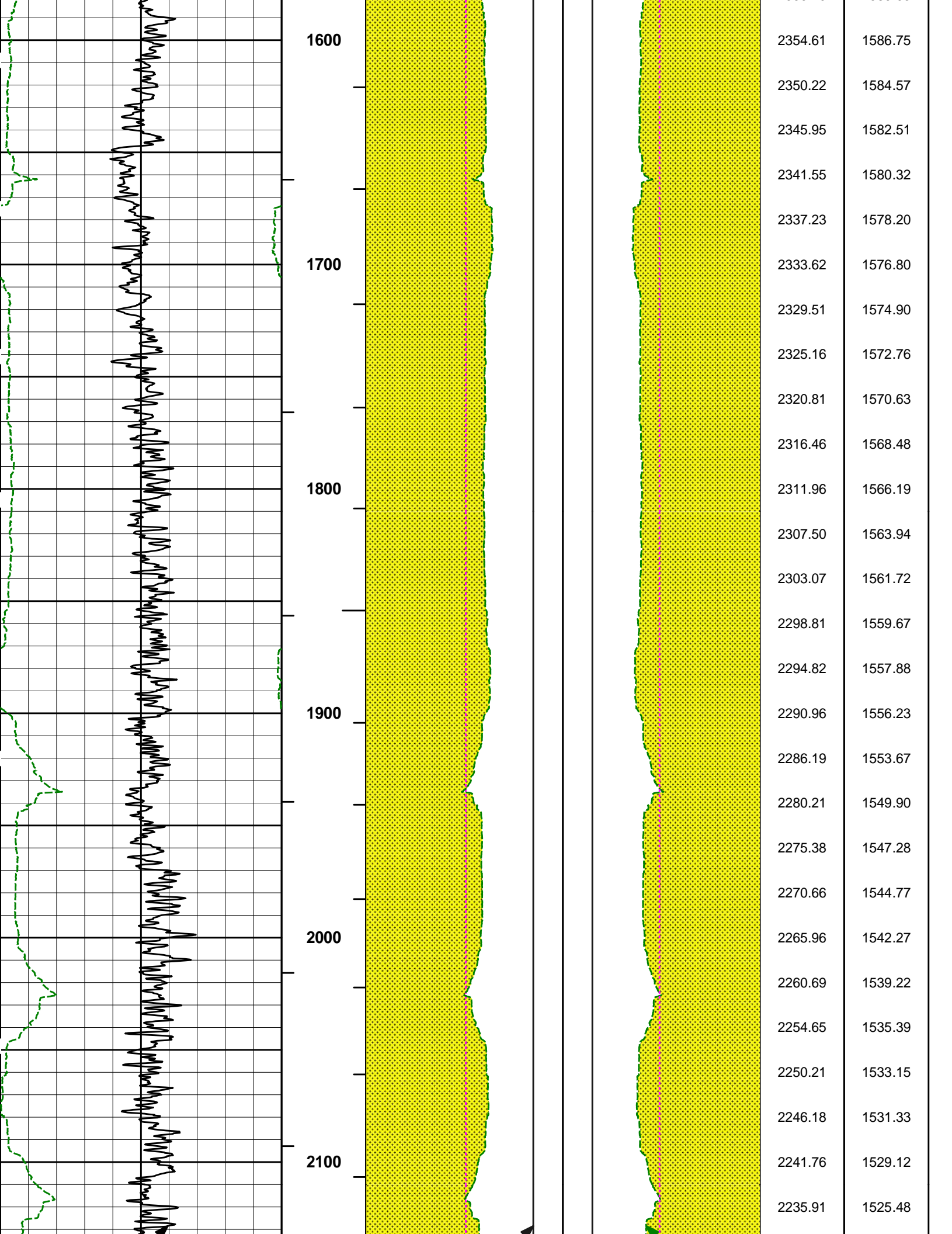
COMPANY	KERR-MCGEE OIL & GAS ONSHORE LP
WELL	CAMENISCH 36-2
FIELD	WATTENBERG
COUNTY	WELD
STATE	COLORADO
API No.	05123346020000
Location	SURFACE HOLE LOCATION: 973' FSL & 1050' FWL / SWSW  BOTTOM HOLE LOCATION: 55' FSL & 2539' FEL / SWSE
Other Services:	RWCH DSNT/SDLT MEL ACRT

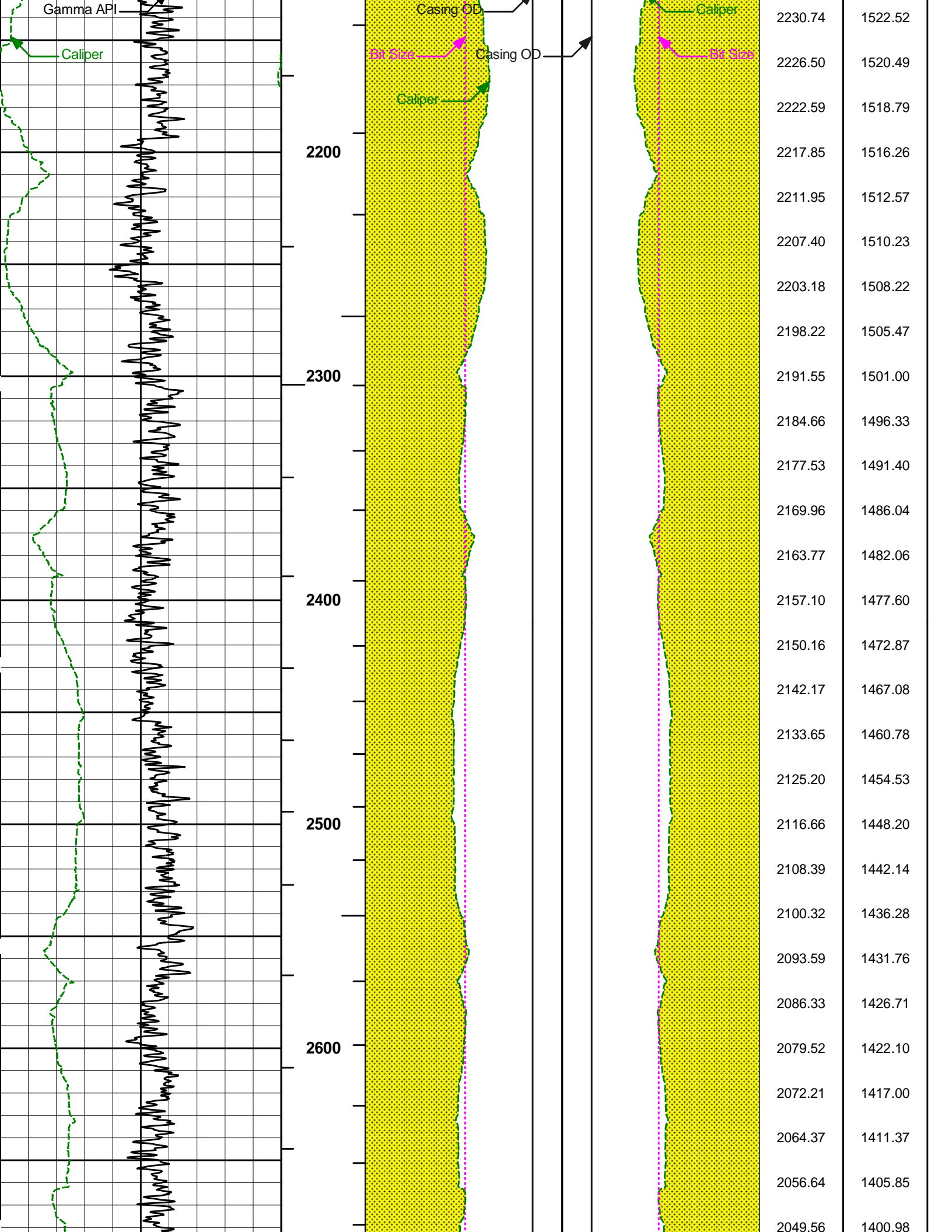
Fold here

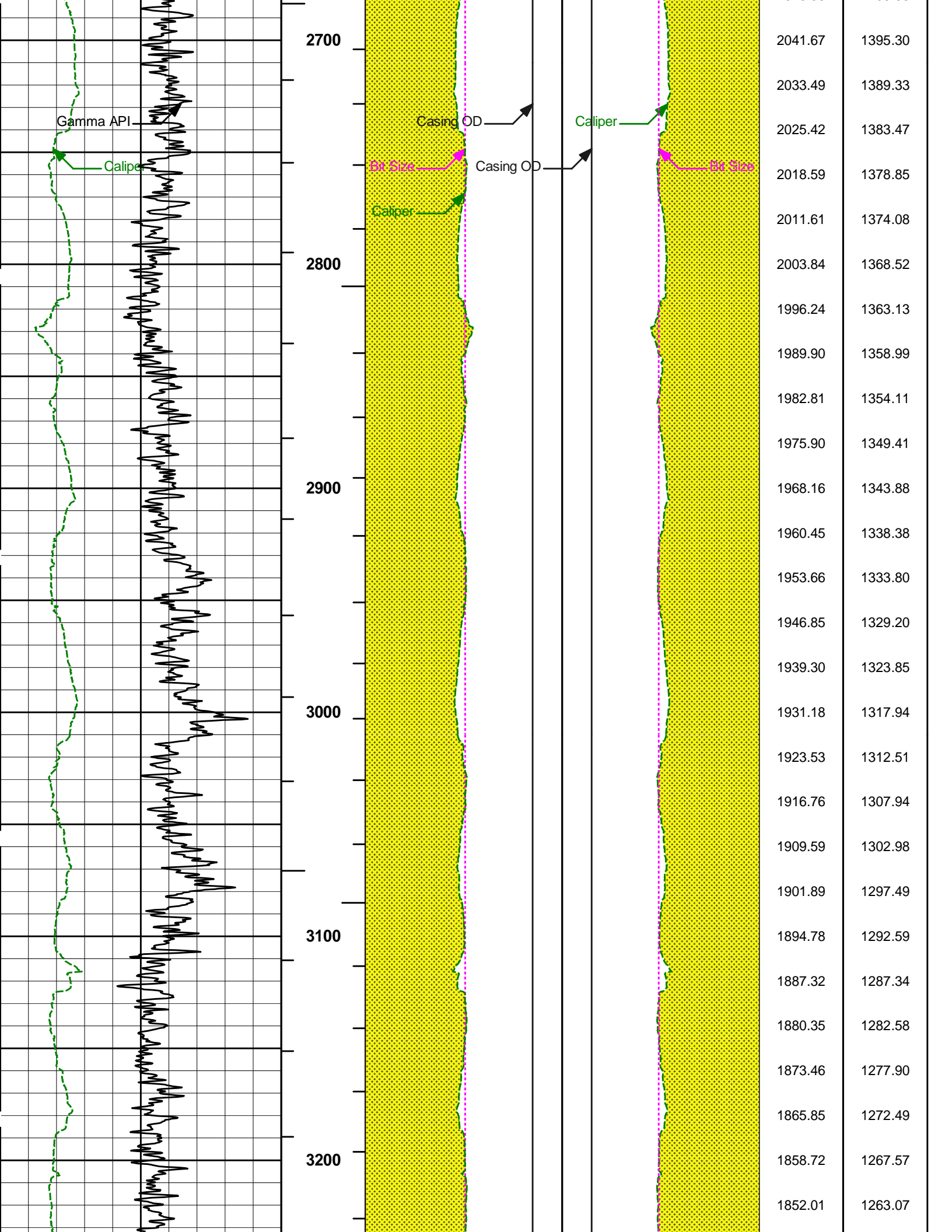
Service Ticket No.: 9869926				API Serial No.: 05123346020000				PGM Version: WL INSITE R3.6.0 (Build 3)							
CHANGE IN MUD TYPE OR ADDITIONAL SAMPLE								RESISTIVITY SCALE CHANGES							
Date		Sample No.						Type Log		Depth		Scale Up Hole		Scale Down Hole	
Depth-Driller															
Type Fluid in Hole															
Density		Viscosity													
Ph		Fluid Loss													
Source of Sample								RESISTIVITY EQUIPMENT DATA							
Rm @ Meas. Temp		@		@				Run No.		Tool Type & No.		Pad Type		Tool Pos.	
Rmf @ Meas. Temp.		@		@				ONE		ACRT -		N/A		FREE	
Rmc @ Meas. Temp.		@		@						E6988-S8481					
Source Rmf		Rmc						ONE		MEL -		MEL		ECCENTERED	
Rm @ BHT		@		@						10947725					
Rmf @ BHT		@		@											
Rmc @ BHT		@		@											
EQUIPMENT DATA															
GAMMA				ACOUSTIC				DENSITY				NEUTRON			
Run No.		ONE		Run No.				Run No.		ONE		Run No.		ONE	
Serial No.		11602914		Serial No.				Serial No.		10947725		Serial No.		11020488	
Model No.		GTET		Model No.				Model No.		SDLT-I		Model No.		DSNT-I	
Diameter		3.625"		No. of Cent.				Diameter		4.5"		Diameter		3.625"	
Detector Model No.		102-A		Spacing				Log Type		GAM-GAM		Log Type		THERM-THERM	
Type		SCINT						Source Type		Cs137		Source Type		Am241Be	
Length		8"		LSA [Y/N]				Serial No.		5235GW		Serial No.		08-018	
Distance to Source		10'		FWDA [Y/N ]				Strength		1.78 Ci		Strength		15.0 Ci	
LOGGING DATA															
GENERAL				GAMMA				ACOUSTIC				DENSITY			



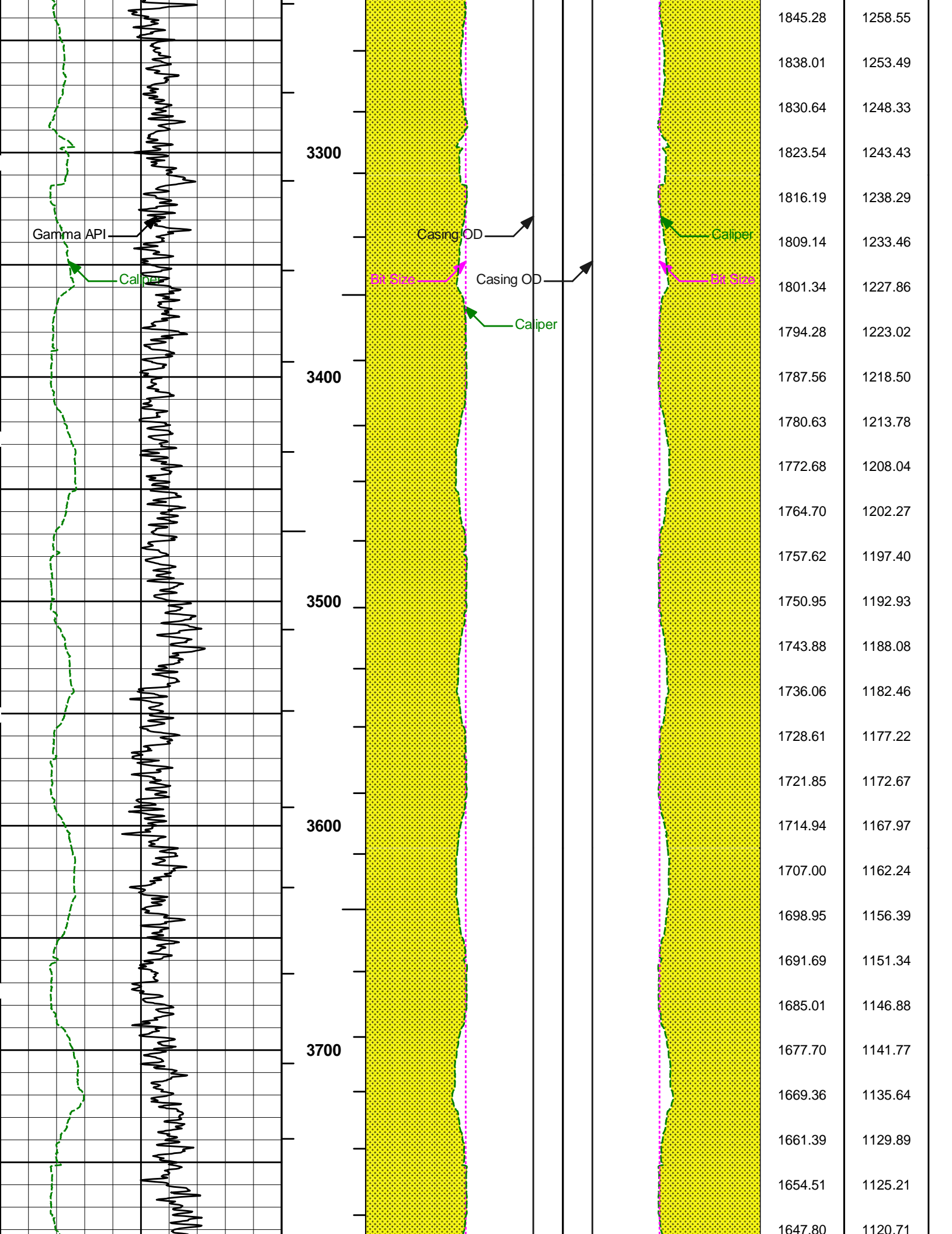


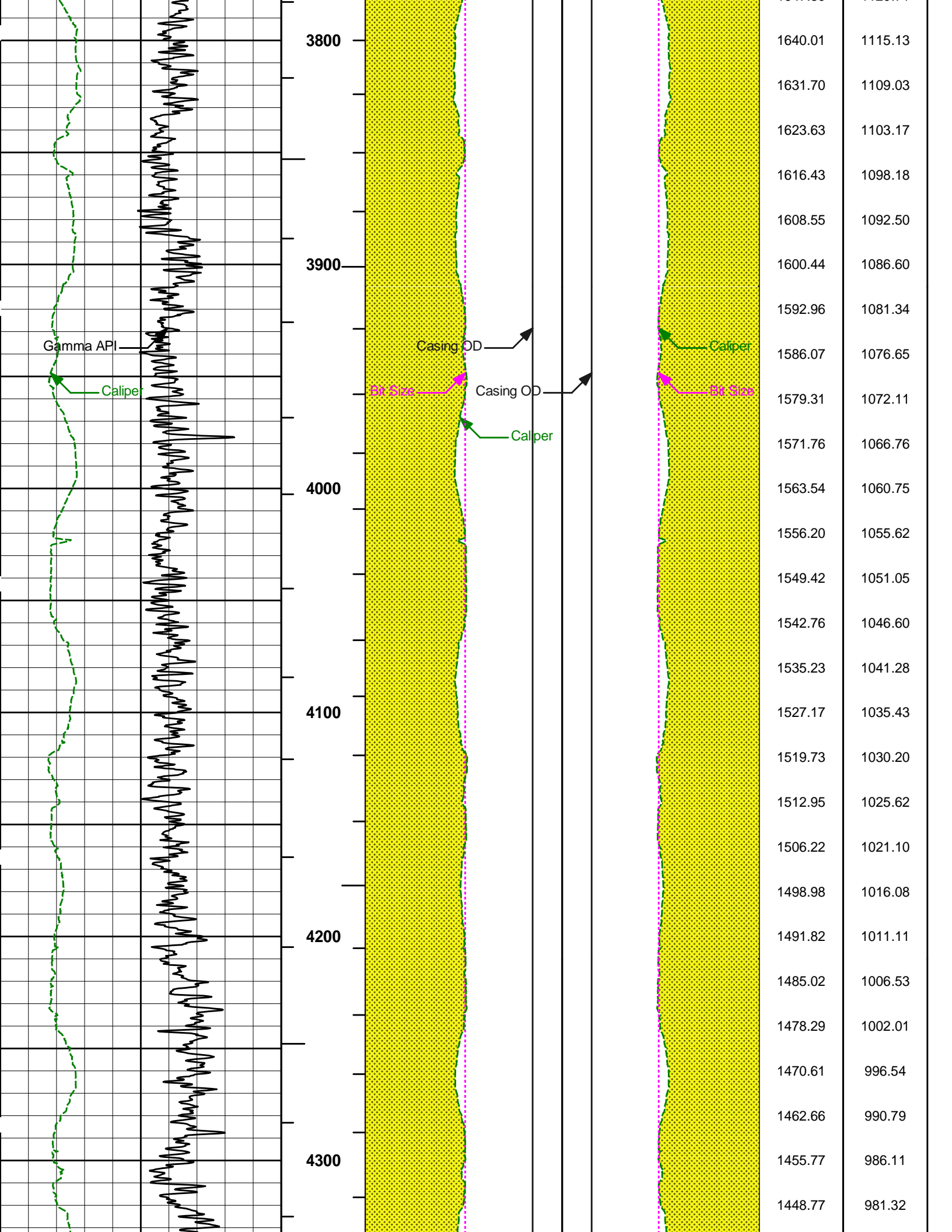




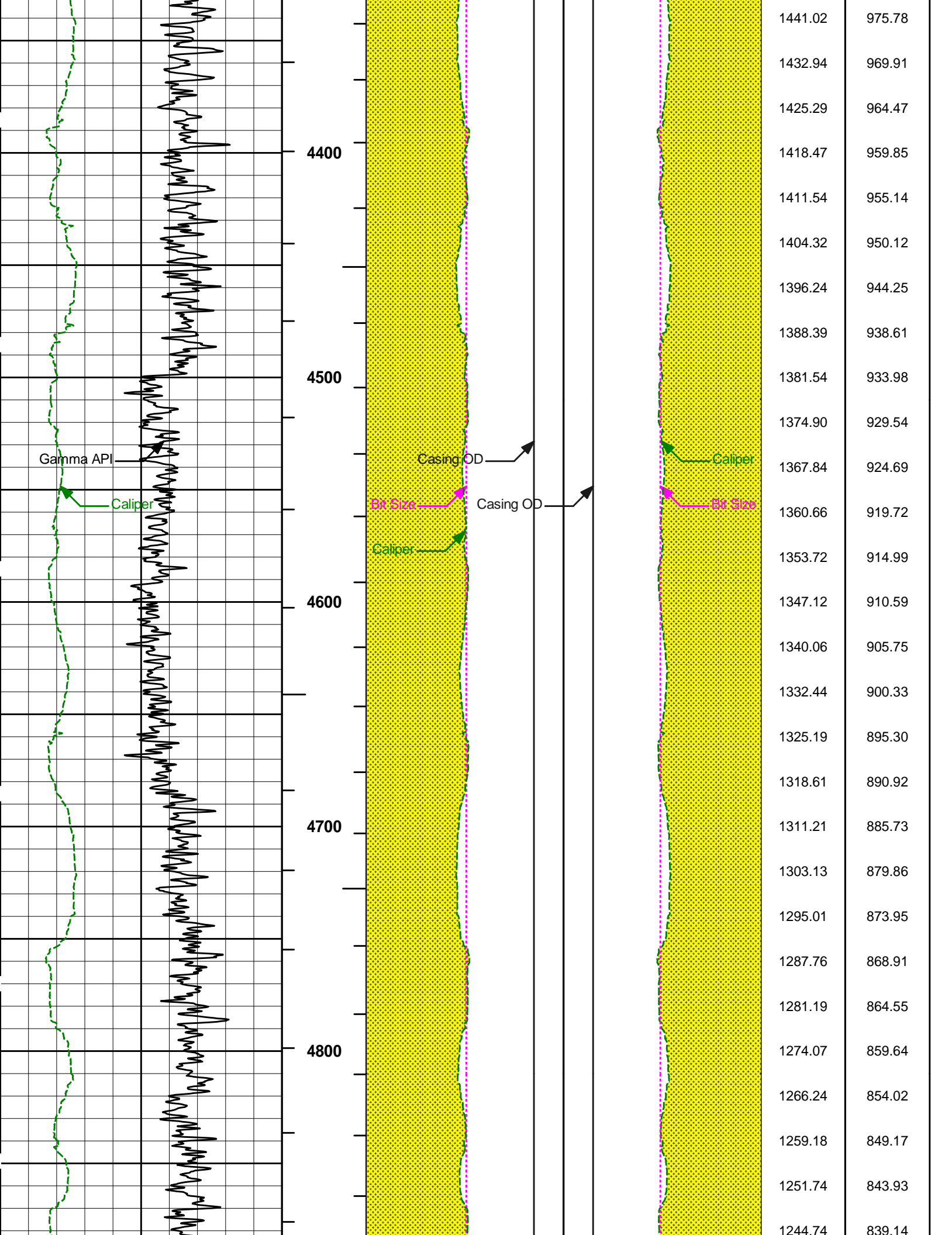


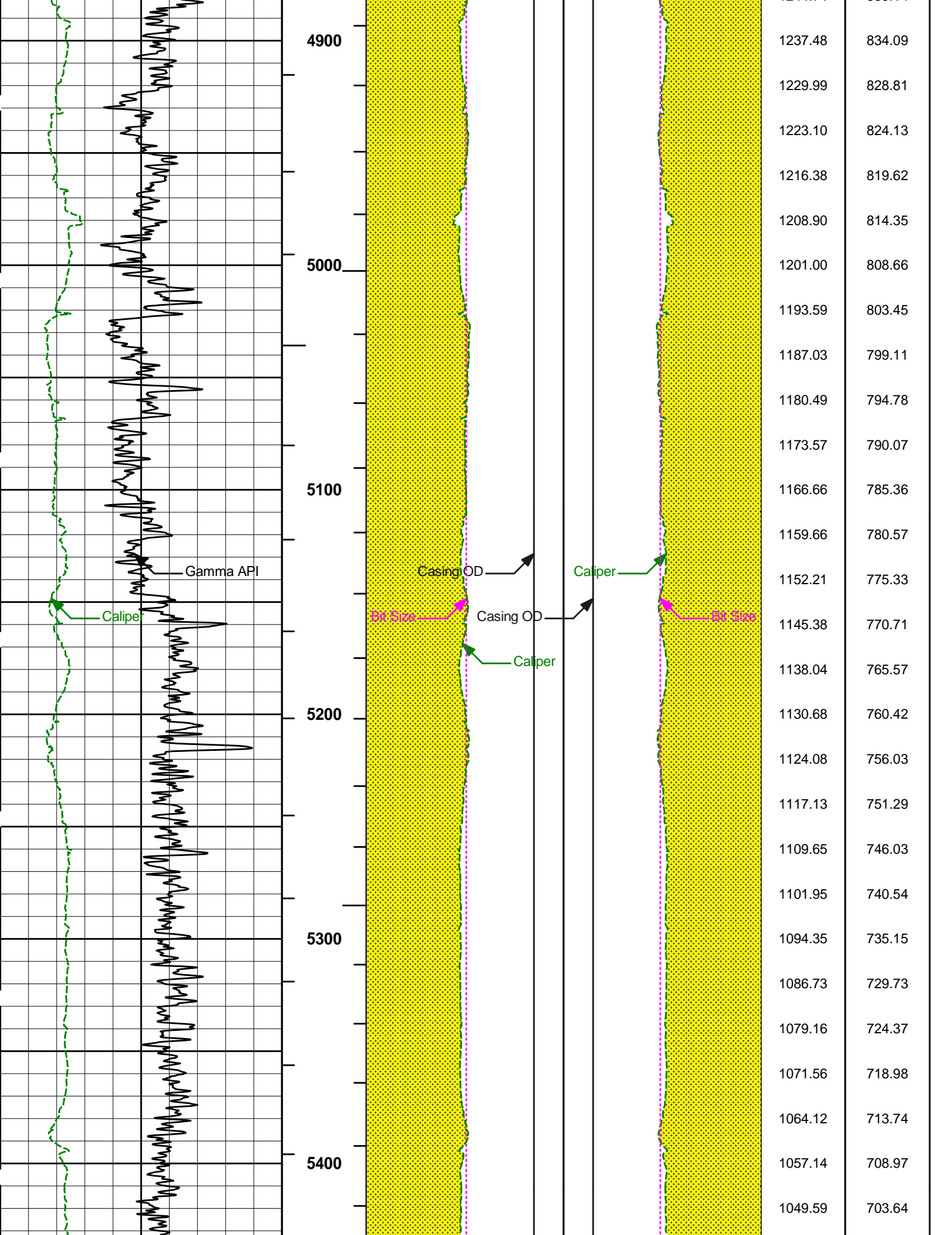


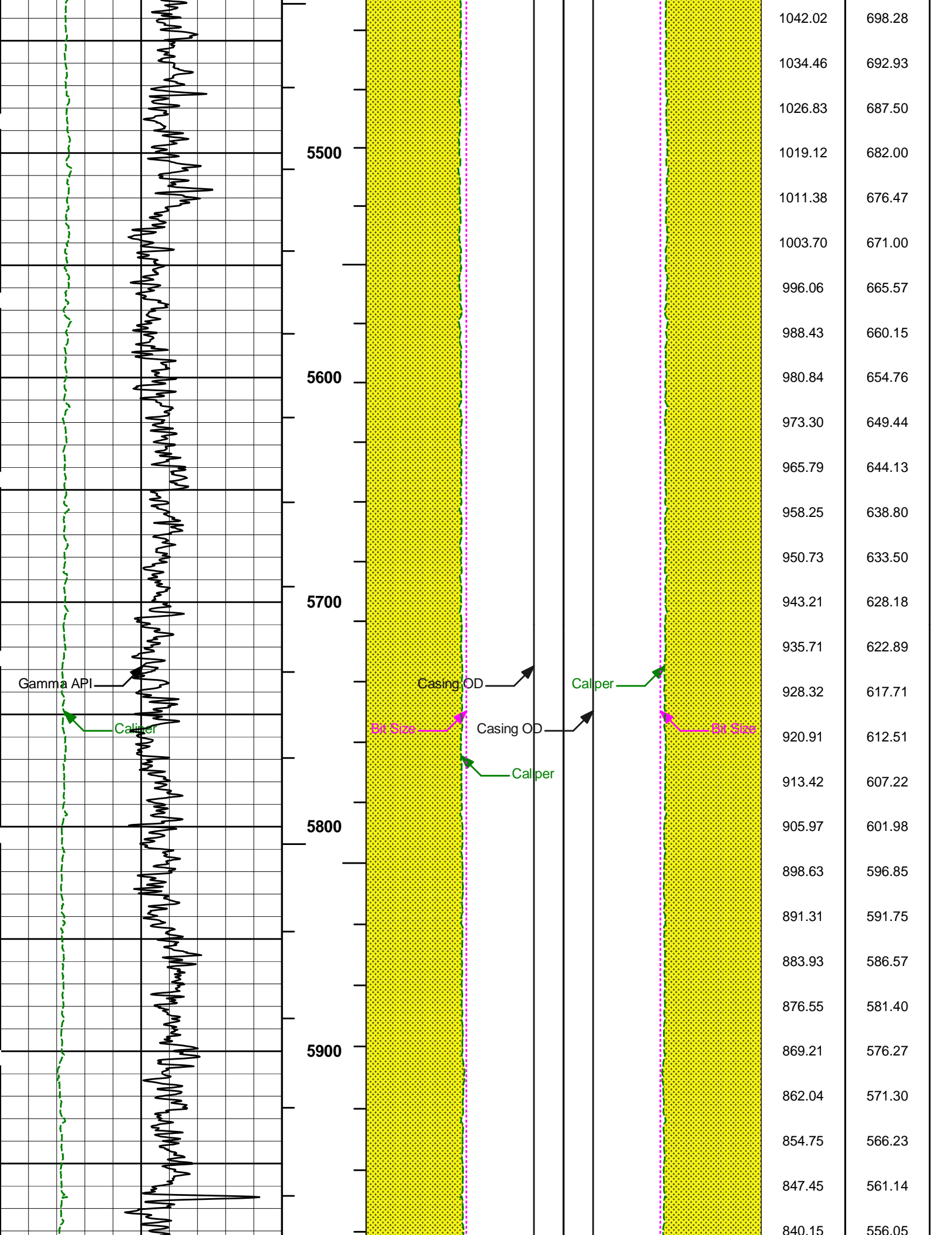


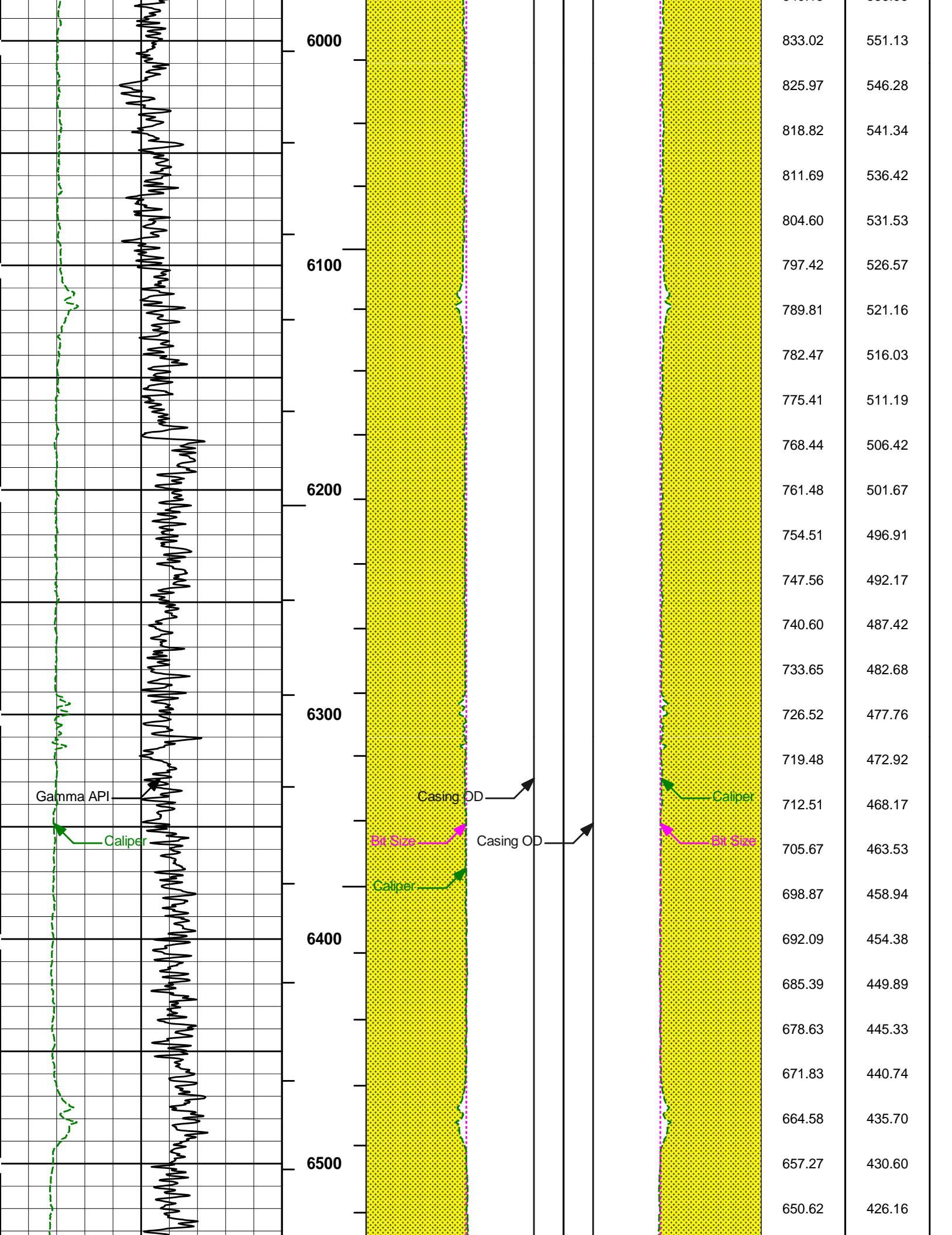


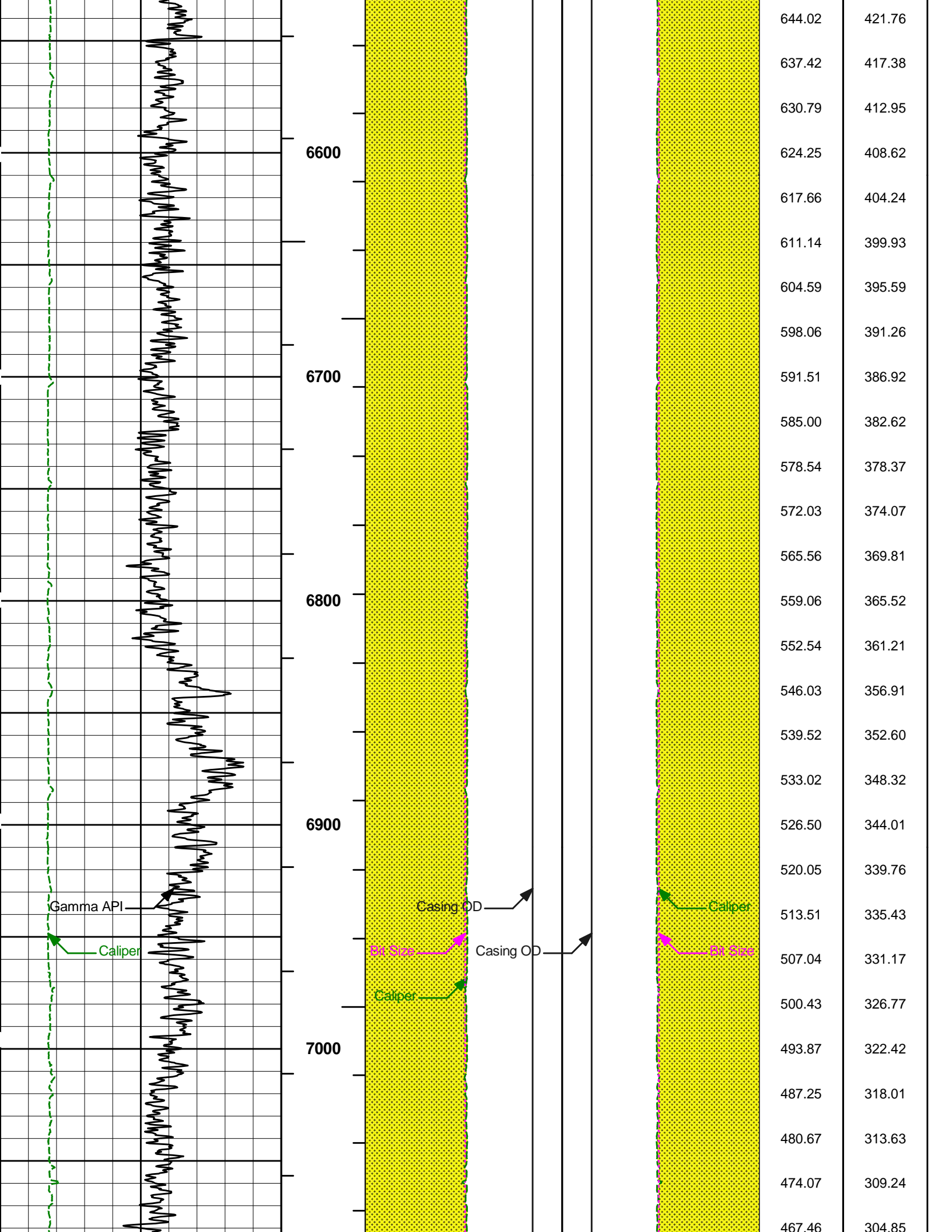




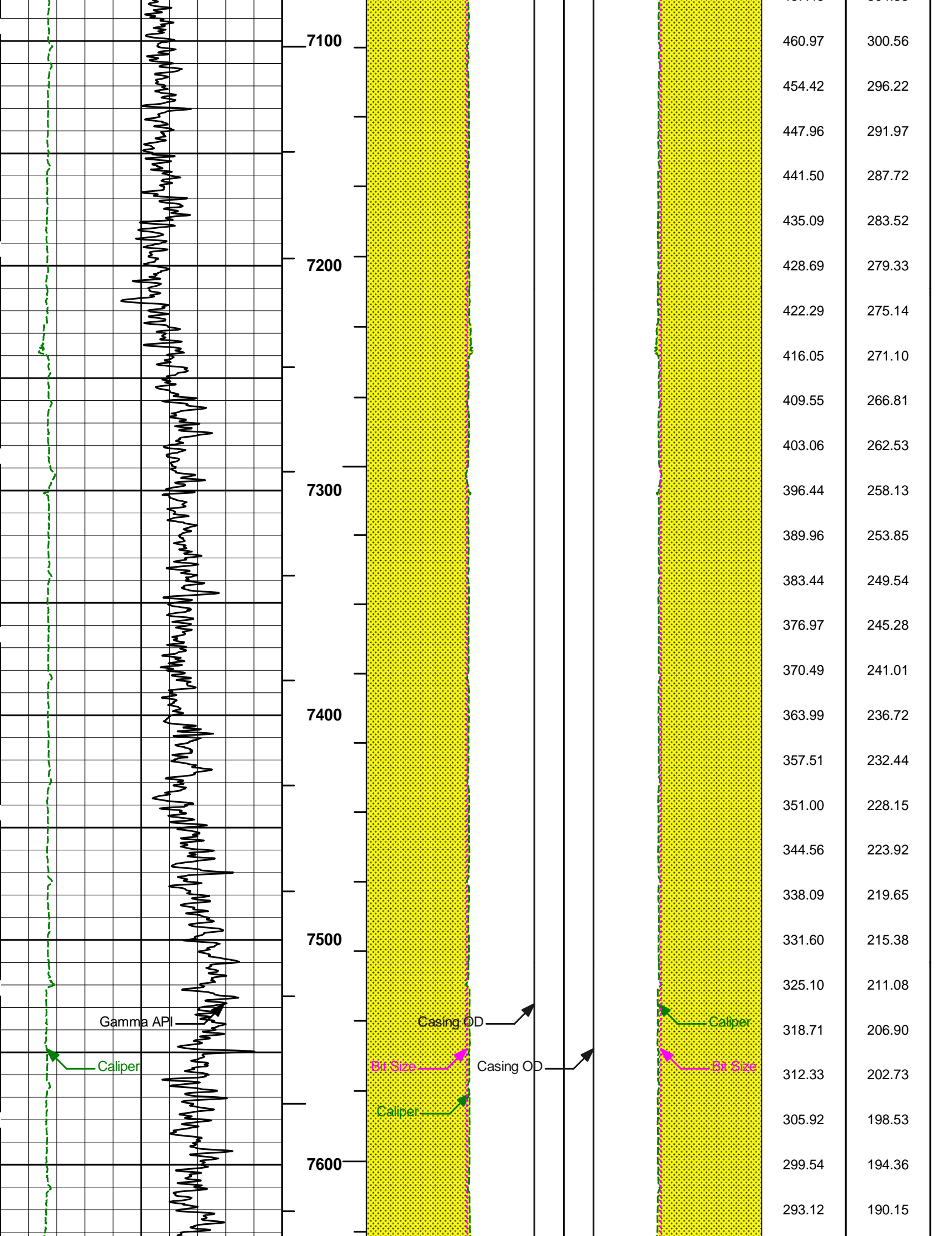




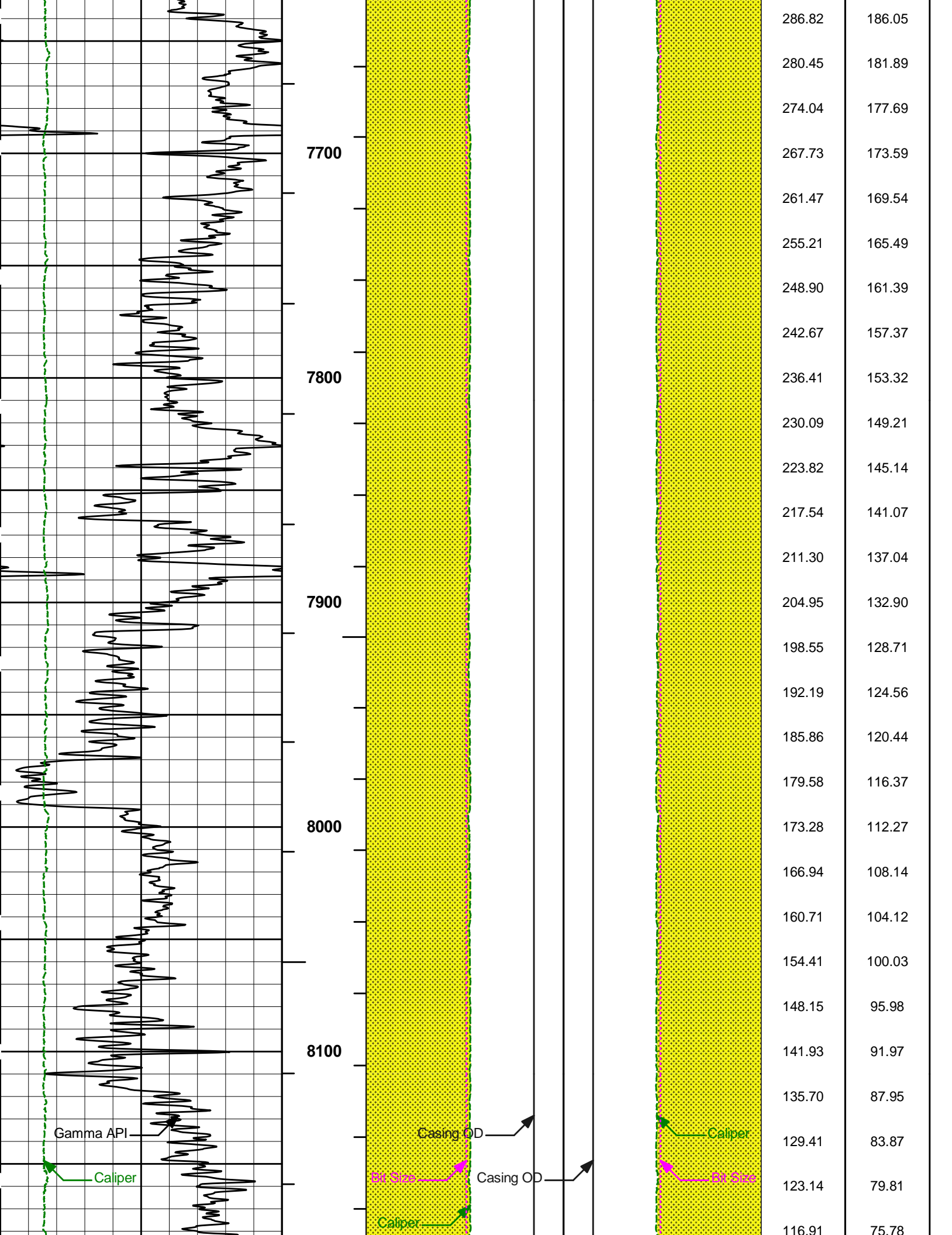


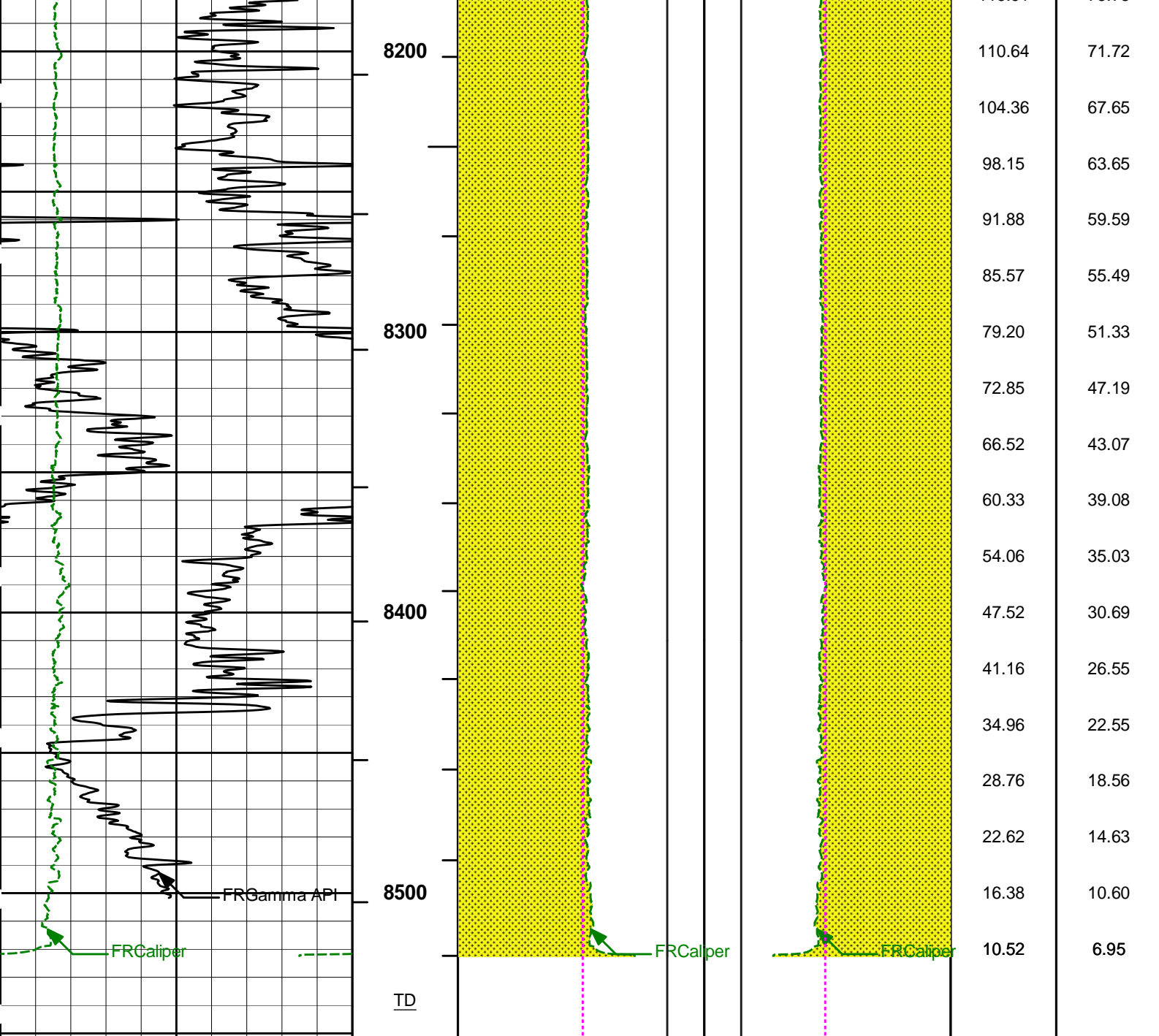












0	Gamma API	200	1 : 600	16	Caliper	0 0	Caliper	16	BHVT	AHVT
	api				inches		inches			
6	Caliper	16	BHVT		Casing OD		Casing OD			
	inches		AHVT	16	Bit Size	0 0	Bit Size	16		
					inches		inches			

**HALLIBURTON**

Plot Time: 06-Oct-12 08:21:18  
 Plot Range: 910 ft to 8551.92 ft  
 Data: ANA\_CAMNCH\_36\_2Well Based\MAIN\*  
 Plot File: \\BHV\IQ\_BHV\_SDL\_RM

**AHV USES 4.5" CASING**

COMPANY	KERR-MCGEE OIL & GAS ONSHORE LP		
WELL	CAMENISCH 36-2		
FIELD	WATTENBERG		
COUNTY	WELD	STATE	COLORADO
HALLIBURTON		BOREHOLE VOLUME PLOT	