

LOCATION DRAWING

VEGETATION:
PASTURE

SURFACE USE:
GRAZING

REFERENCE POINT

LATITUDE: 40.61080

LONGITUDE: -104.08326

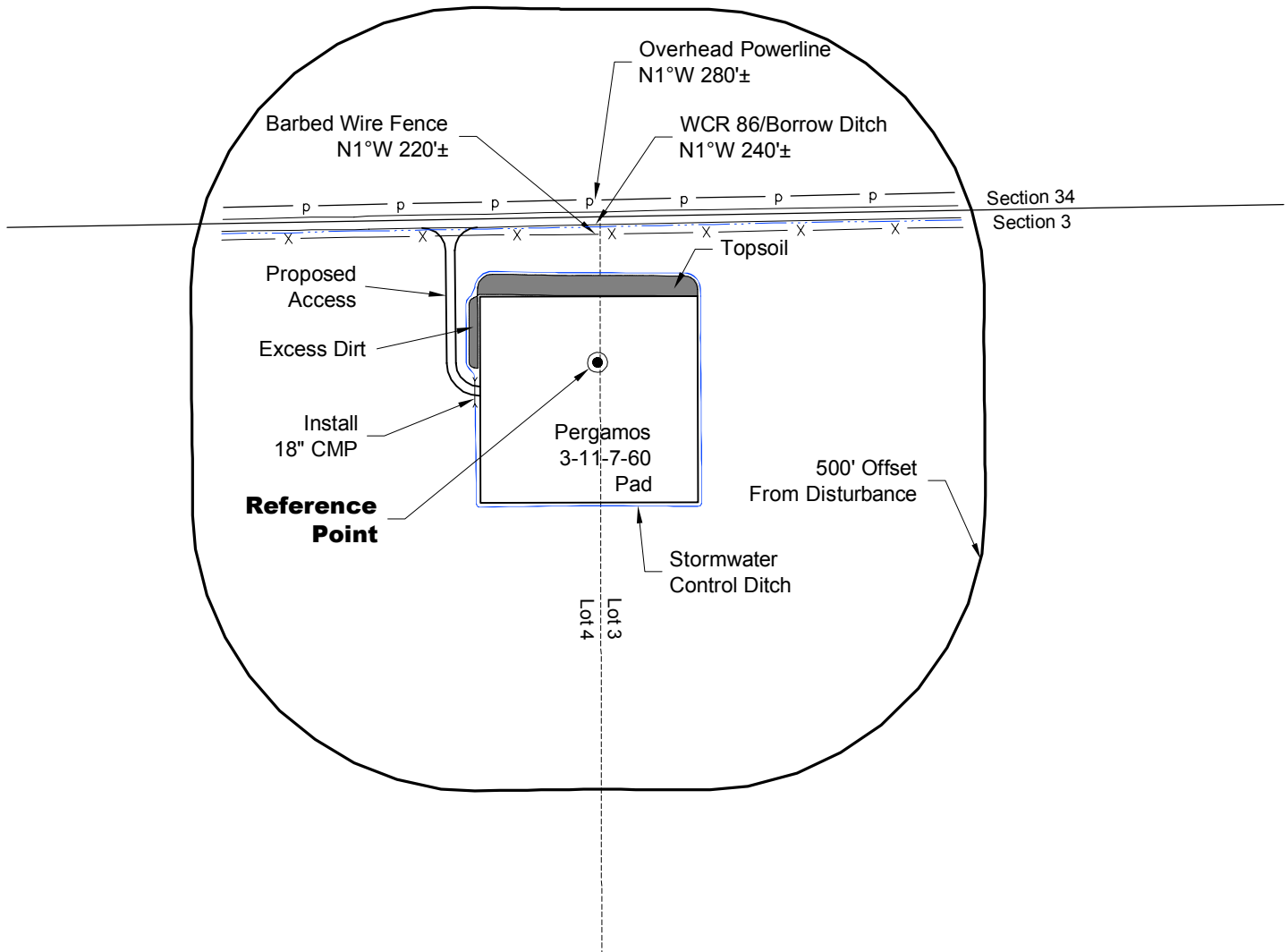
FOOTAGE: 254 FNL 1321 FWL

GROUND ELEVATION: 4921.7

PDOP: 1.8 DATE: 3/19/2012

INSTRUMENT OPERATOR:

MARC WOODARD



NOTE:

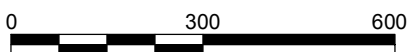
ALL PRODUCTION FACILITIES WILL BE ON PAD.

DISTURBANCE ACREAGE:
4.1± DRILLING OPERATIONS
2.3± FRESHWATER PIT
1.0± INTERIM RECLAIM

10/4/12



North



Graphic Scale in Feet
1" = 300'



LAND SURVEYING AND MAPPING
LAFAYETTE - WINTER PARK
Ph 303 666 0379 Fx 303 665 6320

CARRIZO OIL & GAS, INC
PERGAMOS 3-11-7-60 PAD

LOT 4 SECTION 3 T7N R60W
6th PM WELD COUNTY COLORADO