

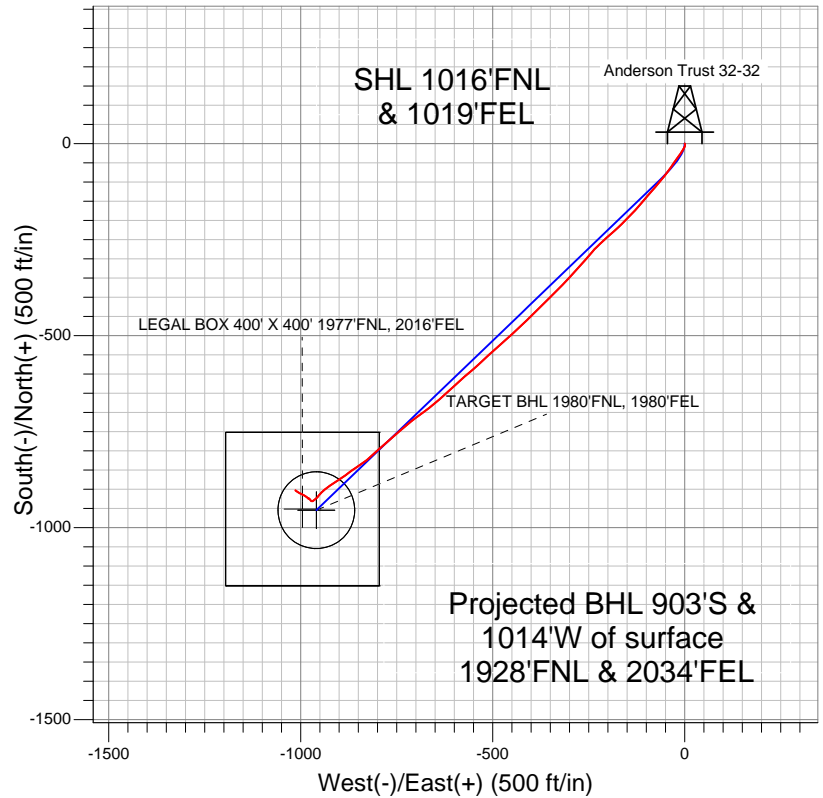


Well Name: Anderson Trust 32-32

Surface Location: Anderson 6-4-32 Pad Sec.32-T2N-R68W
North American Datum 1983 US State Plane 1983Colorado Northern Zone
Ground Elevation: 4950.0

+N/-S	+E/-W	Northing	Easting	Latitude	Longitude	Slot
0.0	0.0	1279460.92	3133896.38	40.099520	-105.021360	
Original Well Elev		WELL @ 4963.0ft (Original Well Elev)				

EnCana Oil & Gas Weld County CO



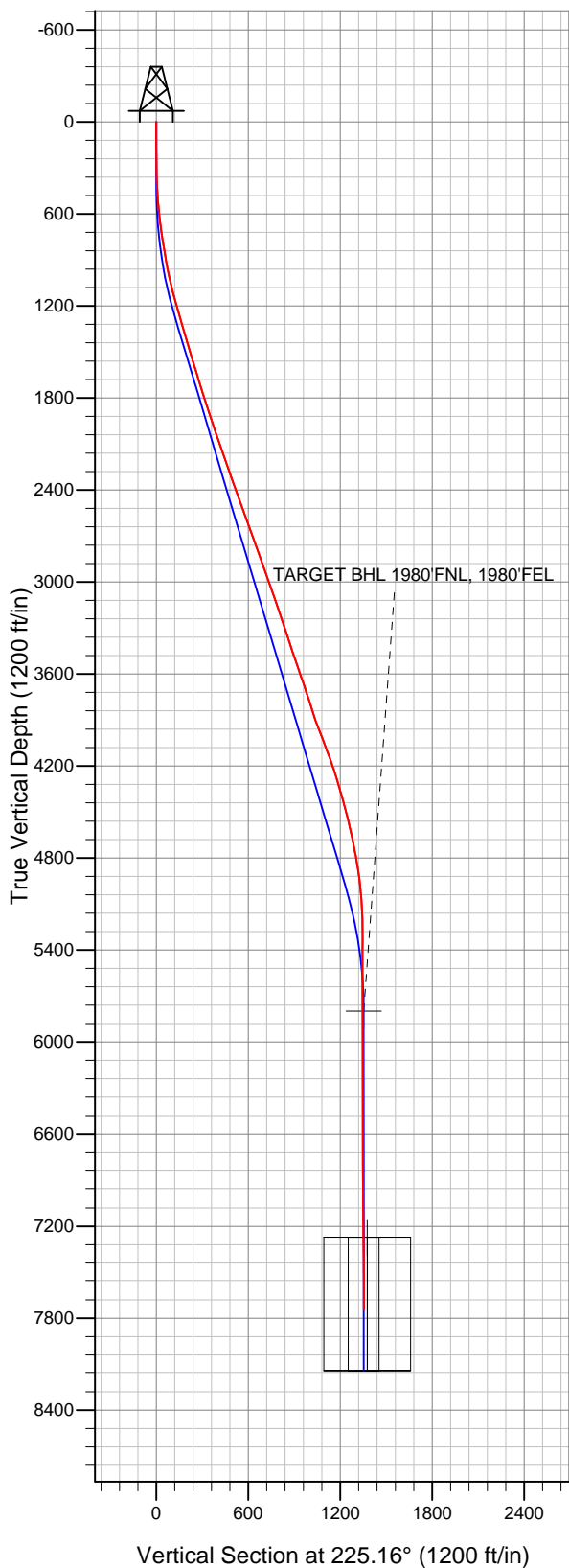
LEGEND

- Wellbore #1
- Anderson Trust 32-32, Wellbore #1, Plan #1 (5-14-12) R V0
- Survey #1

Final Survey Plot

Projected Final Survey -
7950'MD & 7745'TVD @ 1356'VS
1.90 deg Inc 305.90 deg AZ

Project: SEC.32-T2N-R68W
Site: Anderson 6-4-32 Pad Sec.32-T2N-R68W
Well: Anderson Trust 32-32
Plan: Wellbore #1





EnCana Oil & Gas Weld County CO

SEC.32-T2N-R68W

Anderson 6-4-32 Pad Sec.32-T2N-R68W

Anderson Trust 32-32

Wellbore #1

Survey: Survey #1

Standard Survey Report

21 May, 2012

Company:	EnCana Oil & Gas Weld County CO	Local Co-ordinate Reference:	Well Anderson Trust 32-32
Project:	SEC.32-T2N-R68W	TVD Reference:	WELL @ 4963.0ft (Original Well Elev)
Site:	Anderson 6-4-32 Pad Sec.32-T2N-R68W	MD Reference:	WELL @ 4963.0ft (Original Well Elev)
Well:	Anderson Trust 32-32	North Reference:	True
Wellbore:	Wellbore #1	Survey Calculation Method:	Minimum Curvature
Design:	Wellbore #1	Database:	Landmark

Project	SEC.32-T2N-R68W, Weld County, Colorado		
Map System:	US State Plane 1983	System Datum:	Mean Sea Level
Geo Datum:	North American Datum 1983		Using Well Reference Point
Map Zone:	Colorado Northern Zone		Using geodetic scale factor

Site		Anderson 6-4-32 Pad Sec.32-T2N-R68W			
Site Position:		Northing:	1,279,457.34ft	Latitude:	40.099510
From:	Lat/Long	Easting:	3,133,907.59ft	Longitude:	-105.021320
Position Uncertainty:	0.0 ft	Slot Radius:	"	Grid Convergence:	0.31 °

Well	Anderson Trust 32-32				
Well Position	+N/-S	0.0 ft	Northing:	1,279,460.92 ft	Latitude: 40.099520
	+E/-W	0.0 ft	Easting:	3,133,896.38 ft	Longitude: -105.021360
Position Uncertainty	0.0 ft	Wellhead Elevation:	ft	Ground Level:	4,950.0 ft

Wellbore	Wellbore #1				
Magnetics	Model Name	Sample Date	Declination (°)	Dip Angle (°)	Field Strength (nT)
	IGRF2010	5/14/2012	8.85	66.73	52,848

Design	Wellbore #1				
Audit Notes:					
Version:	1.0	Phase:	ACTUAL	Tie On Depth:	0.0
Vertical Section:	Depth From (TVD) (ft)	+N/-S (ft)	+E/-W (ft)	Direction (°)	
	5,800.0	0.0	0.0	225.16	

Survey Program		Date	5/21/2012		
From (ft)	To (ft)	Survey (Wellbore)	Tool Name	Description	
71.0	7,950.0	Survey #1 (Wellbore #1)	MWD	MWD - Standard	

Survey	Wellbore Data									
	Measured Depth (ft)	Inclination (°)	Azimuth (°)	Vertical Depth (ft)	+N/-S (ft)	+E/-W (ft)	Vertical Section (ft)	Dogleg Rate (°/100ft)	Build Rate (°/100ft)	Turn Rate (°/100ft)
Main Survey	0.0	0.00	0.00	0.0	0.0	0.0	0.0	0.00	0.00	0.00
	71.0	0.40	169.90	71.0	-0.2	0.0	0.1	0.56	0.56	0.00
	162.0	0.60	166.70	162.0	-1.0	0.2	0.6	0.22	0.22	-3.52
	254.0	1.00	169.30	254.0	-2.3	0.5	1.3	0.44	0.43	2.83
	345.0	1.60	181.50	345.0	-4.3	0.6	2.6	0.72	0.66	13.41
	437.0	3.10	204.70	436.9	-7.9	-0.5	5.9	1.90	1.63	25.22
	529.0	4.80	209.60	528.7	-13.5	-3.4	11.9	1.88	1.85	5.33
	621.0	6.90	211.70	620.2	-21.5	-8.2	21.0	2.29	2.28	2.28
	712.0	8.30	214.70	710.4	-31.6	-14.8	32.8	1.60	1.54	3.30
	786.0	9.10	216.30	783.5	-40.7	-21.4	43.8	1.13	1.08	2.16
	850.0	9.50	216.00	846.7	-49.0	-27.5	54.0	0.63	0.63	-0.47
	889.0	9.70	216.60	885.1	-54.3	-31.3	60.5	0.57	0.51	1.54
	976.0	11.50	213.50	970.7	-67.4	-40.5	76.2	2.17	2.07	-3.56

Company:	EnCana Oil & Gas Weld County CO	Local Co-ordinate Reference:	Well Anderson Trust 32-32
Project:	SEC.32-T2N-R68W	TVD Reference:	WELL @ 4963.0ft (Original Well Elev)
Site:	Anderson 6-4-32 Pad Sec.32-T2N-R68W	MD Reference:	WELL @ 4963.0ft (Original Well Elev)
Well:	Anderson Trust 32-32	North Reference:	True
Wellbore:	Wellbore #1	Survey Calculation Method:	Minimum Curvature
Design:	Wellbore #1	Database:	Landmark

Survey

Measured Depth (ft)	Inclination (°)	Azimuth (°)	Vertical Depth (ft)	+N/-S (ft)	+E/-W (ft)	Vertical Section (ft)	Dogleg Rate (°/100ft)	Build Rate (°/100ft)	Turn Rate (°/100ft)
1,063.0	14.00	217.00	1,055.5	-83.0	-51.6	95.1	3.01	2.87	4.02
1,151.0	15.00	222.30	1,140.7	-100.0	-65.7	117.0	1.89	1.14	6.02
1,238.0	15.70	220.90	1,224.6	-117.2	-80.9	140.0	0.91	0.80	-1.61
1,325.0	16.40	219.80	1,308.2	-135.5	-96.5	164.0	0.88	0.80	-1.26
1,413.0	16.70	221.00	1,392.6	-154.6	-112.8	189.0	0.52	0.34	1.36
1,500.0	16.70	222.80	1,475.9	-173.2	-129.5	213.9	0.59	0.00	2.07
1,587.0	16.60	225.20	1,559.2	-191.1	-146.8	238.8	0.80	-0.11	2.76
1,674.0	16.50	224.00	1,642.6	-208.8	-164.2	263.6	0.41	-0.11	-1.38
1,762.0	17.80	228.40	1,726.7	-226.7	-182.9	289.6	2.09	1.48	5.00
1,849.0	17.90	228.60	1,809.5	-244.4	-202.9	316.2	0.13	0.11	0.23
1,936.0	17.20	226.50	1,892.5	-262.1	-222.2	342.4	1.08	-0.80	-2.41
2,024.0	19.20	220.50	1,976.1	-282.0	-241.1	369.8	3.11	2.27	-6.82
2,111.0	19.40	221.00	2,058.2	-303.8	-259.8	398.5	0.30	0.23	0.57
2,198.0	19.80	222.80	2,140.2	-325.5	-279.3	427.6	0.83	0.46	2.07
2,286.0	19.10	222.80	2,223.1	-347.0	-299.2	456.9	0.80	-0.80	0.00
2,373.0	19.30	223.10	2,305.3	-368.0	-318.7	485.5	0.26	0.23	0.34
2,460.0	20.00	224.50	2,387.2	-389.1	-339.0	514.7	0.97	0.80	1.61
2,547.0	20.10	227.70	2,469.0	-409.8	-360.5	544.5	1.27	0.11	3.68
2,635.0	20.00	224.70	2,551.6	-430.6	-382.2	574.7	1.17	-0.11	-3.41
2,722.0	19.70	225.40	2,633.5	-451.5	-403.2	604.2	0.44	-0.34	0.80
2,809.0	20.20	225.40	2,715.2	-472.4	-424.3	633.9	0.57	0.57	0.00
2,897.0	19.80	227.50	2,797.9	-493.1	-446.1	664.0	0.93	-0.45	2.39
2,984.0	18.90	229.50	2,880.0	-512.2	-467.7	692.8	1.28	-1.03	2.30
3,071.0	19.30	228.90	2,962.2	-530.8	-489.2	721.2	0.51	0.46	-0.69
3,159.0	19.20	226.30	3,045.3	-550.4	-510.6	750.2	0.98	-0.11	-2.95
3,246.0	19.30	227.00	3,127.4	-570.0	-531.5	778.8	0.29	0.11	0.80
3,333.0	18.60	230.20	3,209.7	-588.7	-552.7	807.0	1.44	-0.80	3.68
3,420.0	18.00	229.60	3,292.3	-606.3	-573.6	834.3	0.72	-0.69	-0.69
3,508.0	18.20	225.80	3,376.0	-624.7	-593.8	861.5	1.36	0.23	-4.32
3,595.0	19.50	228.10	3,458.3	-643.9	-614.3	889.6	1.72	1.49	2.64
3,682.0	19.10	229.30	3,540.4	-662.9	-635.9	918.3	0.65	-0.46	1.38
3,770.0	19.40	228.90	3,623.5	-681.9	-657.9	947.3	0.37	0.34	-0.45
3,857.0	18.20	235.30	3,705.9	-699.1	-679.9	975.1	2.74	-1.38	7.36
3,944.0	18.20	233.30	3,788.5	-715.0	-702.0	1,001.9	0.72	0.00	-2.30
4,032.0	17.90	230.00	3,872.2	-731.9	-723.4	1,029.0	1.21	-0.34	-3.75
4,119.0	21.30	228.60	3,954.1	-750.9	-745.5	1,058.1	3.94	3.91	-1.61
4,206.0	20.90	229.50	4,035.3	-771.4	-769.1	1,089.3	0.59	-0.46	1.03
4,293.0	20.90	227.90	4,116.6	-791.9	-792.4	1,120.3	0.66	0.00	-1.84
4,381.0	18.70	227.50	4,199.4	-812.0	-814.5	1,150.1	2.50	-2.50	-0.45
4,468.0	17.20	233.60	4,282.1	-829.0	-835.1	1,176.7	2.76	-1.72	7.01
4,555.0	16.70	236.50	4,365.4	-843.6	-855.9	1,201.7	1.13	-0.57	3.33
4,643.0	15.10	234.00	4,450.0	-857.3	-875.7	1,225.5	1.98	-1.82	-2.84
4,730.0	14.60	235.10	4,534.1	-870.2	-893.9	1,247.4	0.66	-0.57	1.26
4,817.0	12.80	236.70	4,618.6	-881.8	-910.9	1,267.7	2.11	-2.07	1.84
4,905.0	11.60	234.70	4,704.6	-892.3	-926.3	1,286.0	1.45	-1.36	-2.27
4,992.0	10.00	231.90	4,790.1	-902.0	-939.4	1,302.1	1.93	-1.84	-3.22
5,079.0	8.70	218.40	4,875.9	-911.8	-949.4	1,316.1	2.92	-1.49	-15.52
5,166.0	6.80	222.60	4,962.1	-920.7	-957.0	1,327.8	2.28	-2.18	4.83
5,254.0	5.20	231.60	5,049.7	-927.0	-963.6	1,337.0	2.10	-1.82	10.23
5,341.0	2.30	239.30	5,136.5	-930.4	-968.2	1,342.6	3.38	-3.33	8.85
5,428.0	2.20	280.60	5,223.4	-931.0	-971.4	1,345.2	1.83	-0.11	47.47
5,516.0	2.00	329.10	5,311.3	-929.3	-973.8	1,345.8	1.97	-0.23	55.11
5,603.0	1.90	317.10	5,398.3	-927.0	-975.6	1,345.4	0.48	-0.11	-13.79
5,690.0	1.90	317.00	5,485.2	-924.9	-977.6	1,345.3	0.00	0.00	-0.11

Company:	EnCana Oil & Gas Weld County CO	Local Co-ordinate Reference:	Well Anderson Trust 32-32
Project:	SEC.32-T2N-R68W	TVD Reference:	WELL @ 4963.0ft (Original Well Elev)
Site:	Anderson 6-4-32 Pad Sec.32-T2N-R68W	MD Reference:	WELL @ 4963.0ft (Original Well Elev)
Well:	Anderson Trust 32-32	North Reference:	True
Wellbore:	Wellbore #1	Survey Calculation Method:	Minimum Curvature
Design:	Wellbore #1	Database:	Landmark

Survey										
Measured Depth (ft)	Inclination (°)	Azimuth (°)	Vertical Depth (ft)	+N/-S (ft)	+E/-W (ft)	Vertical Section (ft)	Dogleg Rate (°/100ft)	Build Rate (°/100ft)	Turn Rate (°/100ft)	
5,865.0	0.60	200.50	5,660.2	-923.6	-979.9	1,346.1	1.28	-0.74	-66.57	
6,004.9	0.07	242.36	5,800.1	-924.3	-980.2	1,346.8	0.39	-0.38	29.93	
TARGET BHL 1980'FNL, 1980'FEL										
6,039.0	0.10	344.60	5,834.2	-924.3	-980.2	1,346.8	0.39	0.09	299.50	
6,214.0	0.60	302.40	6,009.2	-923.7	-981.0	1,346.9	0.30	0.29	-24.11	
6,389.0	1.00	316.10	6,184.2	-922.1	-982.9	1,347.1	0.25	0.23	7.83	
6,563.0	1.00	302.10	6,358.2	-920.2	-985.2	1,347.4	0.14	0.00	-8.05	
6,738.0	0.80	322.10	6,533.1	-918.4	-987.2	1,347.6	0.21	-0.11	11.43	
6,912.0	1.10	298.50	6,707.1	-916.7	-989.5	1,348.0	0.28	0.17	-13.56	
7,087.0	1.30	288.00	6,882.1	-915.2	-992.8	1,349.3	0.17	0.11	-6.00	
7,262.0	1.30	301.90	7,057.0	-913.6	-996.4	1,350.7	0.18	0.00	7.94	
7,436.0	1.50	297.30	7,231.0	-911.5	-1,000.1	1,351.9	0.13	0.11	-2.64	
7,480.3	1.60	298.62	7,275.3	-910.9	-1,001.2	1,352.2	0.24	0.23	2.98	
TARGET CIRCLE 1980'FNL & 1980'FEL										
7,481.3	1.60	298.65	7,276.2	-910.9	-1,001.2	1,352.2	0.24	0.23	2.79	
LEGAL BOX 400' X 400' 1977'FNL, 2016'FEL										
7,611.0	1.90	301.70	7,405.9	-908.9	-1,004.6	1,353.2	0.24	0.23	2.35	
7,785.0	1.80	301.40	7,579.8	-906.0	-1,009.4	1,354.6	0.06	-0.06	-0.17	
7,900.0	1.90	305.90	7,694.8	-903.9	-1,012.5	1,355.3	0.15	0.09	3.91	
7,950.0	1.90	305.90	7,744.7	-902.9	-1,013.8	1,355.6	0.00	0.00	0.00	

Checked By: _____	Approved By: _____	Date: _____
-------------------	--------------------	-------------