

The Road to Excellence Starts with Safety

Sold To #: 300721	Ship To #: 300721	Quote #:	Sales Order #: 9438902
Customer: WPX ENERGY ROCKY MOUNTAIN LLC-EBUS	Customer Rep: Hartl, Al		
Well Name: RWF	Well #: 21-36	API/UWI #: 05-045-20752	
Field: Rulison	City (SAP): TULSA	County/Parish: Garfield	State: Colorado
Lat: N 39.485 deg. OR N 39 deg. 29 min. 6.684 secs.	Long: W 107.84 deg. OR W -108 deg. 9 min. 36.968 secs.		
Contractor: NABORS 576	Rig/Platform Name/Num: NABORS 576		
Job Purpose: Cement Surface Casing			
Well Type: Development Well	Job Type: Cement Surface Casing		
Sales Person: MAYO, MARK	Srv Supervisor: CHASTAIN, DERICK	MBU ID Emp #: 455848	

Job Personnel

HES Emp Name	Exp Hrs	Emp #	HES Emp Name	Exp Hrs	Emp #	HES Emp Name	Exp Hrs	Emp #
CHASTAIN, DERICK Allan	6	455848	HARDRICK, RAYMOND Frank	6	391324	TRIPLETT, MICHEAL Anthony	6	447908
WEAVER, CARLTON Russell	6	457698						

Equipment

HES Unit #	Distance-1 way	HES Unit #	Distance-1 way	HES Unit #	Distance-1 way	HES Unit #	Distance-1 way
10744648C	60 mile	10784080	60 mile	11360883	60 mile	11583932	60 mile
11808845	60 mile						

Job Hours

Date	On Location Hours	Operating Hours	Date	On Location Hours	Operating Hours	Date	On Location Hours	Operating Hours
4/28/2012	6	2						
TOTAL			Total is the sum of each column separately					

Job

Formation Name	Top	Bottom	Called Out	Date	Time	Time Zone
Formation Depth (MD)			On Location	28 - Apr - 2012	07:00	MST
Form Type	BHST		Job Started	28 - Apr - 2012	10:56	MST
Job depth MD	1135. ft	Job Depth TVD	Job Completed	28 - Apr - 2012	11:49	GMT
Water Depth		Wk Ht Above Floor	Departed Loc	28 - Apr - 2012	01:00	MST
Perforation Depth (MD)	From	To				

Well Data

Description	New / Used	Max pressure psig	Size in	ID in	Weight lbm/ft	Thread	Grade	Top MD ft	Bottom MD ft	Top TVD ft	Bottom TVD ft
OPEN HOLE				13.5				.	1135.		
SURFACE CASING	Unknown		9.625	9.001	32.3		H-40	.	1127.		

Tools and Accessories

Type	Size	Qty	Make	Depth	Type	Size	Qty	Make	Depth	Type	Size	Qty	Make
Guide Shoe					Packer					Top Plug	9 5/8	1	HES
Float Shoe					Bridge Plug					Bottom Plug			
Float Collar					Retainer					SSR plug set			
Insert Float										Plug Container	9 5/8	1	HES
Stage Tool										Centralizers			

Miscellaneous Materials

Gelling Agt	Conc	Surfactant	Conc	Acid Type	Qty	Conc	%
Treatment Fld	Conc	Inhibitor	Conc	Sand Type	Size	Qty	

Fluid Data

Stage/Plug #: 1	Fluid #	Stage Type	Fluid Name	Qty	Qty uom	Mixing Density lbm/gal	Yield ft3/sk	Mix Fluid Gal/sk	Rate bbl/min	Total Mix Fluid Gal/sk
-----------------	---------	------------	------------	-----	---------	------------------------	--------------	------------------	--------------	------------------------

Stage/Plug #: 1									
Fluid #	Stage Type	Fluid Name	Qty	Qty uom	Mixing Density lbm/gal	Yield ft ³ /sk	Mix Fluid Gal/sk	Rate bbl/min	Total Mix Fluid Gal/sk
1	Water Spacer		20.00	bbl	8.33	.0	.0	4	
2	Lead Cement	VERSACEM (TM) SYSTEM (452010)	160.0	sacks	12.3	2.38	13.75	8	13.75
3	HalCem Lead	VERSACEM (TM) SYSTEM (452010)	160.0	sacks	12.8	2.11	11.75	8	11.75
11.75 Gal		FRESH WATER							
4	Displacement		86.00	bbl	8.33	.0	.0	10	
Calculated Values		Pressures		Volumes					
Displacement	85.2	Shut In: Instant		Lost Returns	0	Cement Slurry	127.9	Pad	
Top Of Cement	SURFACE	5 Min		Cement Returns	35	Actual Displacement	85.2	Treatment	
Frac Gradient		15 Min		Spacers	20	Load and Breakdown		Total Job	235
Rates									
Circulating	7	Mixing	8	Displacement	10	Avg. Job	8		
Cement Left In Pipe	Amount	44.3 ft	Reason	Shoe Joint					
Frac Ring # 1 @	ID	Frac ring # 2 @	ID	Frac Ring # 3 @	ID	Frac Ring # 4 @	ID		
The Information Stated Herein Is Correct				Customer Representative Signature					

The Road to Excellence Starts with Safety

Sold To #: 300721	Ship To #: 300721	Quote #:	Sales Order #: 9438902
Customer: WPX ENERGY ROCKY MOUNTAIN LLC-EBUS	Customer Rep: Harll, Al		
Well Name: RWF	Well #: 21-36	API/UWI #: 05-045-20752	
Field: Rulison	City (SAP): TULSA	County/Parish: Garfield	State: Colorado
Legal Description:			
Lat: N 39.485 deg. OR N 39 deg. 29 min. 6.684 secs.		Long: W 107.84 deg. OR W -108 deg. 9 min. 36.968 secs.	
Contractor: NABORS 576	Rig/Platform Name/Num: NABORS 576		
Job Purpose: Cement Surface Casing	Ticket Amount:		
Well Type: Development Well	Job Type: Cement Surface Casing		
Sales Person: MAYO, MARK	Srv Supervisor: CHASTAIN, DERICK	MBU ID Emp #: 455848	

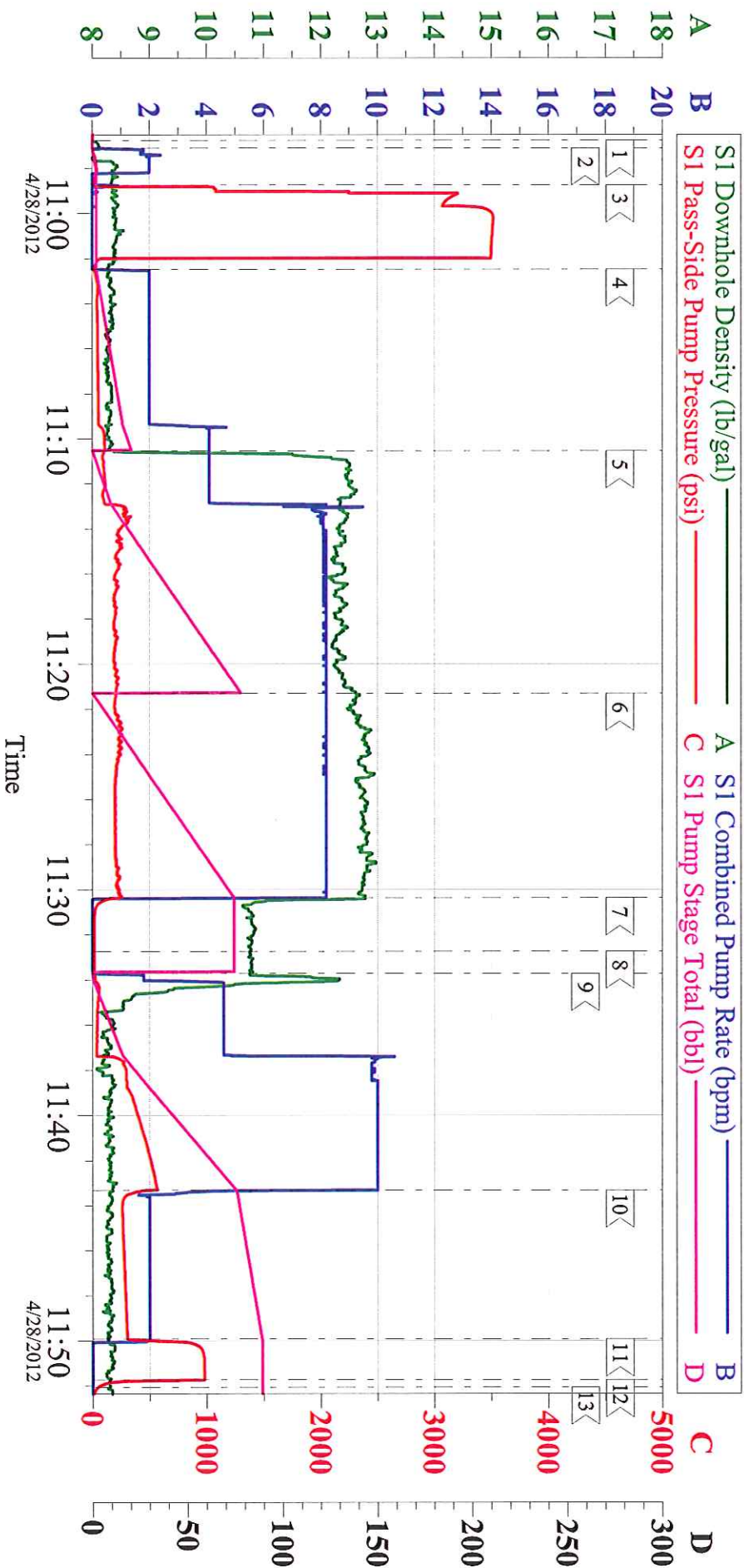
Activity Description	Date/Time	Cht #	Rate bbl/min	Volume bbl		Pressure psig		Comments
				Stage	Total	Tubing	Casing	
Call Out	04/28/2012 03:00							CREW WAITING IN DEBEQUE.
Pre-Convoy Safety Meeting	04/28/2012 05:00							WITH ALL HES PERSONNEL SAFE DRIVING PRACTICES AND TRAVEL ROUTE REVIEWED
Arrive at Location from Service Center	04/28/2012 07:00							RIG PULLING DRILL PIPE
Assessment Of Location Safety Meeting	04/28/2012 07:15							WITH ALL HES PERSONNEL
Pre-Rig Up Safety Meeting	04/28/2012 08:15							WITH ALL HES PERSONNEL
Rig-Up Equipment	04/28/2012 08:30							1 ELITE HT 400 PUMP, 1 660 BULK TRUCK, 1 F-450 PICK-UP, 1 PLUG CONTAINER, 2" IRON TO STAND PIPE
Circulate Well	04/28/2012 10:10							CASING ON BOTTOM, RIG CIRCULATES USING HES CMT HEAD, CIRC. 1/2 HR, 7 BPM, 130 PSI. MUD REPORT 9.7 PPG PV 28, YP 24, TEMP 86.
Pre-Job Safety Meeting	04/28/2012 10:30							WITH ALL HES PERSONNEL, RIG CREW AND CO REP
Start Job	04/28/2012 10:56							TD 1135', TP 1127', FC 1082.6', SJ 44.33', OH 13.5", SURFACE CASING 9.625" 32.3# H-40.
Pump Water	04/28/2012 10:57		2	2			34.0	FRESH H2O, TO PRIME LINES

Cementing Job Log

Activity Description	Date/Time	Cht #	Rate bbl/min	Volume bbl		Pressure psig		Comments
				Stage	Total	Tubing	Casing	
Test Lines	04/28/2012 10:58							PRESSURE TESTED TO 3510 PSI. HELD FOR 2 MIN.
Pump Spacer 1	04/28/2012 11:02		4	20			110.0	FRESH H2O
Pump Lead Cement	04/28/2012 11:10		8	67.8			320.0	160 SKS 12.3 PPG 2.38 FT3/SK 13.75 GAL/SK WEIGHED VERIFIED VIA MUD SCALES WET AND DRY SAMPLES SUBMITTED
Pump Tail Cement	04/28/2012 11:21		8	60.1			230.0	160 SKS 12.8 PPG 2.11 FT3/SK 11.75 GAL/SK WEIGHED VERIFIED VIA MUD SCALES WET AND DRY SAMPLES SUBMITTED
Shutdown	04/28/2012 11:30							WASH UP ON TOP OF PLUG
Drop Top Plug	04/28/2012 11:32							VERIFY PLUG LAUNCHED
Pump Displacement	04/28/2012 11:33		10	85.2			572.0	CMT RETURNS 50 BBLS INTO DIS, 35 BBLS TO SURFACE
Slow Rate	04/28/2012 11:43		2	75			300.0	SLOW RATE 10 BBLS PRIOR TO CALCULATED DISPLACEMENT
Bump Plug	04/28/2012 11:49		2	85.2			960.0	BUMP PLUG HOLD 2 MINS
Check Floats	04/28/2012 11:51							FLOATS HOLDING, GOOD RETURNS THROUGHOUT JOB
End Job	04/28/2012 11:52							NO ADD HOURS OR DERRICK CHARGE. 40 LBS SUGAR USED
Pre-Rig Down Safety Meeting	04/28/2012 11:55							WITH ALL HES PERSONNEL
Rig-Down Equipment	04/28/2012 12:00							AREA FREE FROM DEBRIS
Pre-Convoy Safety Meeting	04/28/2012 12:55							WITH ALL HES PERSONNEL
Crew Leave Location	04/28/2012 13:00							THANK YOU FOR CHOOSING HALLIBURTON. DERICK CHASTAIN AND CREW

WPX ENERGY

RWF 21-36 SURFACE

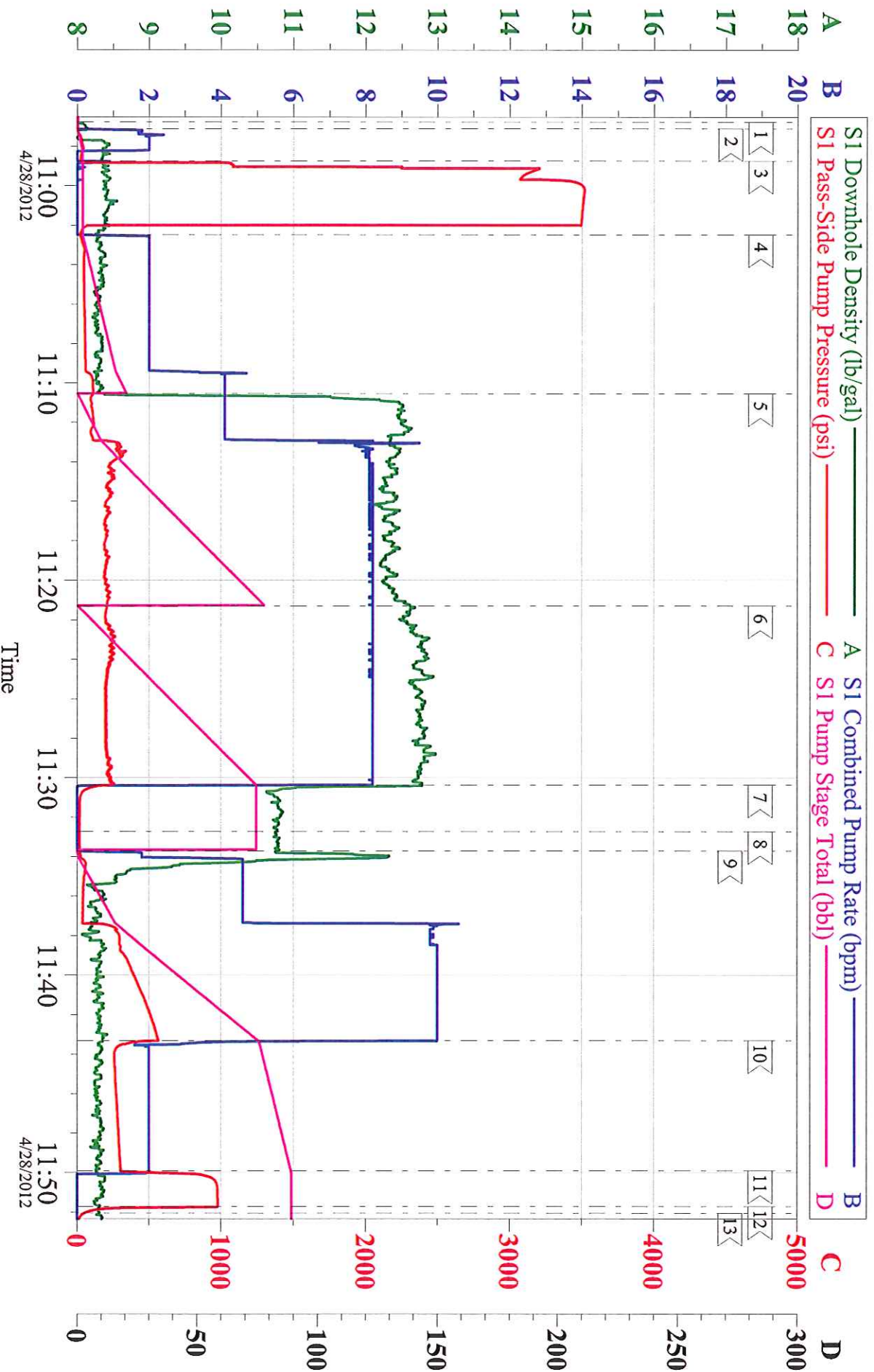


1 <	START JOB	10:56:45	2 <	FILL LINES	10:57:06	3 <	TEST LINES	10:58:44
4 <	PUMP H2O SPACER	11:02:29	5 <	PUMP LEAD CEMENT	11:10:32	6 <	PUMP TAIL CEMENT	11:21:17
7 <	SHUTDOWN	11:30:22	8 <	DROP TOP PLUG	11:32:43	9 <	PUMP DISPLACEMENT	11:33:42
10 <	SLOW RATE	11:43:19	11 <	BUMP PLUG	11:49:55	12 <	CHECK FLOATS	11:51:44
13 <	END JOB	11:52:03						

Customer: WPX ENERGY	Job Date: 28-Apr-2012	Sales Order #: 9438902
Well Description: RWF 21-36	Job Type: SURFACE	ADC Used: YES
Customer Rep: AL HARTL	Service Supervisor: DERICK CHASTAIN	Pump # 6 /Operator: MIKE TRIPLETT

WPX ENERGY

RWF 21-36 SURFACE



Customer: WPX ENERGY
Well Description: RWF 21-36
Customer Rep: AL HARLT

Job Date: 28-Apr-2012
Job Type: SURFACE
Service Supervisor: DERICK CHASTAIN

Sales Order #: 9438902
ADC Used: YES
Pump # 6 / Operator: MIKE TRIPLETT

OptiCem v6.4.10
28-Apr-12 11:59