

Well Name: WELD 02

VERTICAL - ORIGINAL HOLE, 8/15/2012 11:37:52 AM

## Well Header

API 05-123-10897	Business Unit WATTENBERG	District 15	Well Config VERTICAL
Original KB Elevation (ft) 4,708.00	KB - GL / MSL (ftKB) 10.00	Spud Date 2/15/1983	P & A Date

Comment

Directions To Well  
RD 55 & RD 48, E 0.2, N 0.2, NE 0.2 INTO

Current PBTD (ftKB)  
ORIGINAL HOLE - 6,992.0

## Surface Location (Congressional)

Quarter 1	Quarter 2	Quarter 3	Quarter 4	Section	Township	Twship N...	Range	Rng E/W Dir
		NE	SW	3	4	N	64	W

## Bottom Hole Location

North-South Distance (ft)	From N or S Line	East-West Distance (ft)	From E or W Line
---------------------------	------------------	-------------------------	------------------

## Plug Back Total Depths

Date	Depth (ftKB)	Method	Com
2/18/1983	6,992.0	CASING TALLY	LATCH DOWN COLLAR
4/7/2008	6,936.0	TAG	TAGGED FILL W/18.68" IN ON JT 215, 122.97" OF...

## Wellbore Sections

Section Des	Size (in)	Act Top (ftKB)	Act Btm (ftKB)
SURFACE	12 1/4	13.0	250.0
PRODUCTION	7 7/8	250.0	7,100.0

## Zone Statuses

Zone Name	Status Date	Status	Job
CODELL	3/3/1983	PR	DRILLING/COMPLETION - ORIGINAL, 2/15/1983 00:00
CODELL	5/8/2008	PR	CASING REPAIR, 4/4/2008 15:00
CODELL	2/2/2012	PR	RE-FRAC, 1/5/2012 06:00

## Casing Strings

Csg Des	Run Date	OD (in)	Wt/Len (lb/ft)	Grade	Top (ftKB)	Set Depth (ftKB)
Surface	2/15/1983	8 5/8	24.00	?	13.0	250.0
Production	4/11/2008	4 1/2	11.60	K-55	13.0	5,202.0
Production	2/18/1983	4 1/2	11.60	J-55	13.0	7,100.0

## Cement

Des	Top (ftKB)	Btm (ftKB)
Surface Casing Cement	13.0	250.0
PRODUCTION CASING CEMENT	5,950.0	7,100.0
CSG REPAIR ANNULAR CEMENT	13.0	400.0
CSG REPAIR ANNULAR CEMENT	2,260.0	3,210.0
CSG REPAIR ANNULAR CEMENT	5,100.0	5,238.0

## Tubing Components

Item Des	OD (in)	Wt (lb/ft)	Grade	Jts	Len (ft)
Tubing Pup Joint	2 3/8	4.70	J-55	2	20.00
EUE 8rd Tubing	2 3/8	4.70	J-55	219	6,748.95
Seating Nipple	2 3/8	5.40	J-55	1	1.20
Notched collar	2 3/8		J-55	1	0.45

## Perforation Data

Zone	Bnch/St g	Entered Shot Total	Top (ftKB)	Btm (ftKB)	Date
CODELL, ORIGINAL HOLE		30	6,803.0	6,813.0	2/21/1983
CODELL, ORIGINAL HOLE		40	6,803.0	6,813.0	1/9/2012

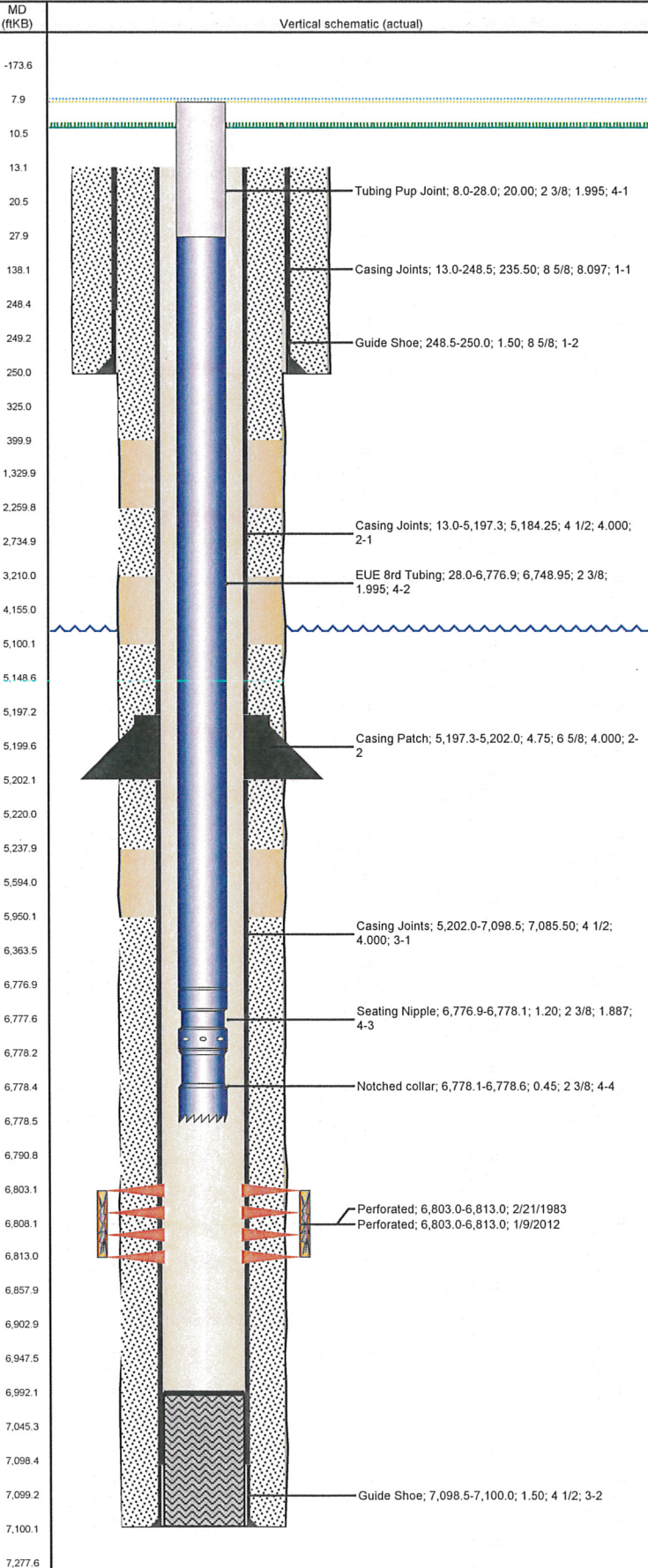
## Stimulations & Treatments

Bnch/Stg	Date	Zone	Primary Job Type
	2/23/1983	CODELL, ORIGINAL HOLE	DRILLING/COMPLETION - ORIGINAL

Comment

Total Add Amount Proppant 275000 lb; Proppant 100 MESH 9000 lb	Total Clean Volume...	Vol Slurry Tot (gal) 134013.61	Vol Gas Tot (MCF)
--	-----------------------	-----------------------------------	-------------------

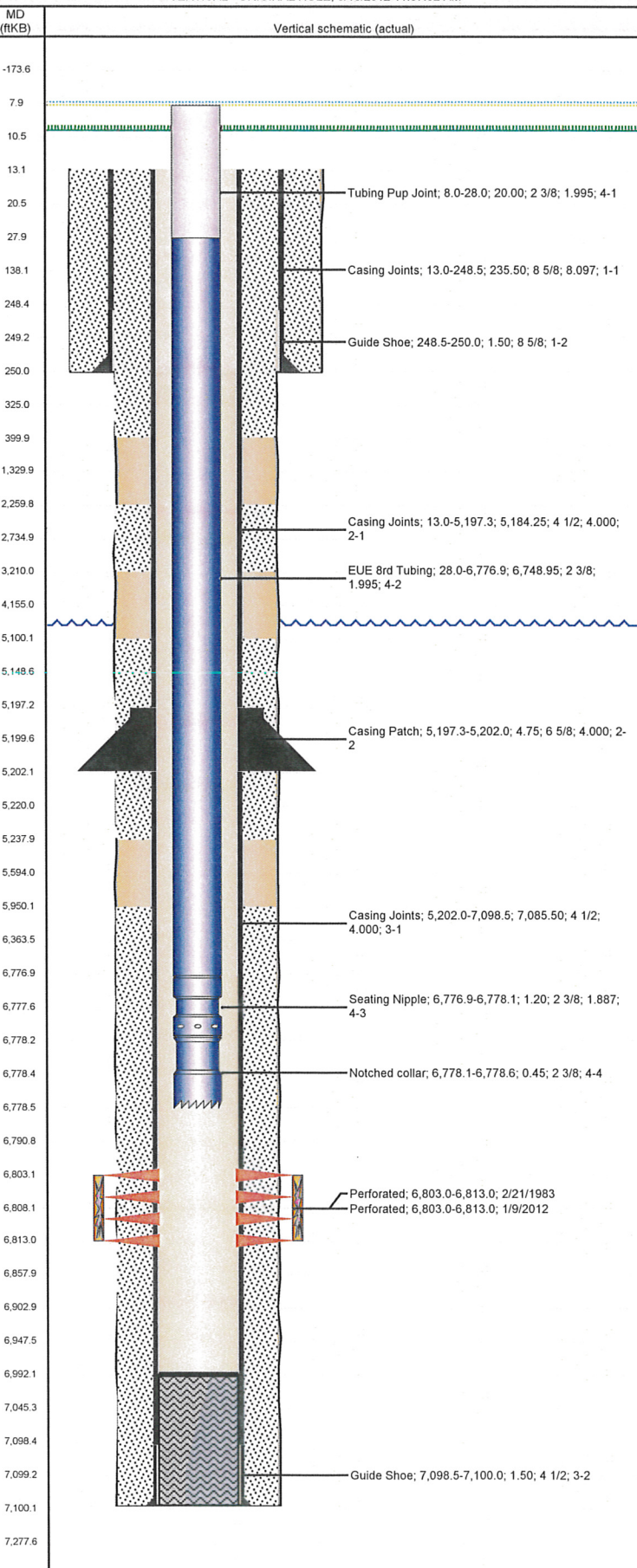
Avg Treat Pressure (psi) 5,800.0	Max Treat Pressure (psi) 6,800.0	Avg Treat Rate (bbl/min) 13.00	Max Treat Rate (bbl/min)
-------------------------------------	-------------------------------------	-----------------------------------	--------------------------





Well Name: WELD 02

VERTICAL - ORIGINAL HOLE, 8/15/2012 11:37:52 AM



## Stimulations & Treatments

Bnch/Stg	Date	Zone	Primary Job Type
	1/12/2012	CODELL, ORIGINAL HOLE	RE-FRAC
<p>Comment</p> <p>LOADED TUBING WITH 23BBL OF TREATED WATER PUMPED AN ADDITIONAL 8BBL AND PRESSURED UP TO 3800 PSI TO TEST PACKER. PACKER HELD. BREAKDOWN - 3816@3.9. PUMPED 105BBL OF LINEAR GEL BEFORE GETTING ISIP AND 5SIP. ISIP - 2502. 5SIP - 1172. 5SIP&lt;1500, RAISED RATE TO 18BPM. FINAL ISIP - 3289, FINAL 5SIP - 2590, AVG RATE - 18.8, AVG PRESS - 5036, AVG VISC - 23, AVG PH - 10.2, AVG TEMP - 71, MAX RATE - 18.9, MAX PRESS - 5544.</p>			
Total Add Amount		Total Clean Volume...	Vol Slurry Tot (gal)
Proppant Ottawa		128858.10	139980.96
244898.203 lb			
Avg Treat Pressure (psi)	Max Treat Pressure (psi)	Avg Treat Rate (bbl/min)	Max Treat Rate (bbl/min)
5,036.0	5,544.0	18.80	18.90

## Other In Hole

Run Date	Des	OD (in)	Top (ftKB)	Btm (ftKB)

## Logs

Date	Type	Top (ftKB)	Btm (ftKB)
4/8/2008	CBL/CCL/GR	5,780.0	6,728.0
4/10/2008	Collar Locator	0.0	260.0
4/16/2008	CBL/CCL/GR	0.0	6,106.0
1/9/2012	CBL/CCL/GR	4,950.0	6,932.0