

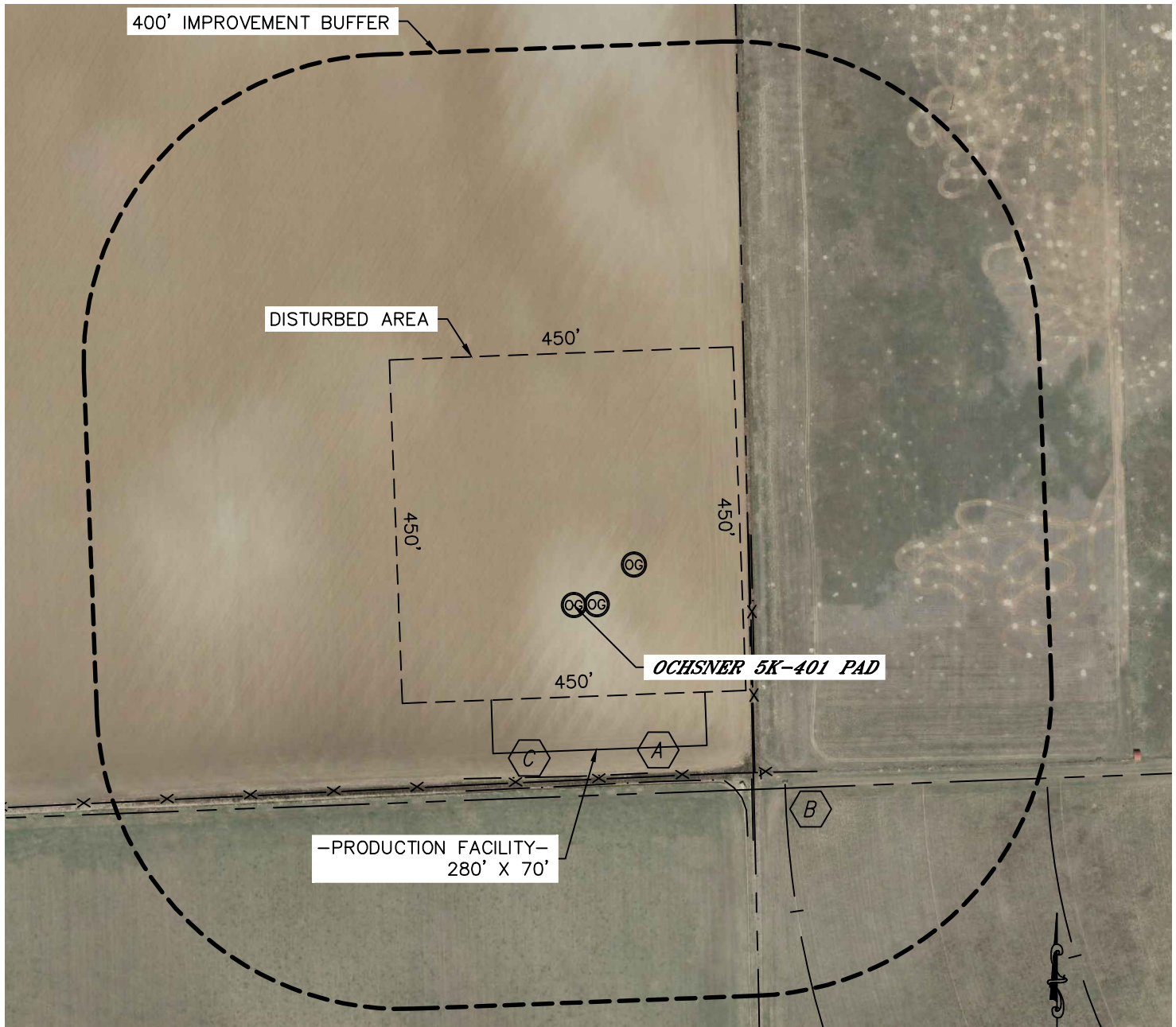


Lat40°, Inc. 1635 Foxtrail Drive, Suite 325 Loveland, CO 970-776-3321

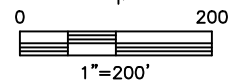
LOCATION DRAWING

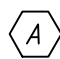
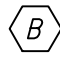

OCHSNER 5K-401 PAD

SECTION: 5
TOWNSHIP: 6N
RANGE: 67W



IMPROVEMENTS:
(MEASURED FROM PROPOSED OCHSNER 5K-401 WELL LOCATION)



-  FENCE 229' S, 232' E & 326' SE
-  IRRIGATION PIVOT TRACK 363' SE & 664' SE
-  DITCH 224' S, 236' S & 234' E

NEAREST: BUILDING 1400' SE, PUBLIC ROAD 1954' W (OLD CR 15),
ABOVE GROUND UTILITY 1985' W, RAILROAD 5280'+, PROPERTY LINE 230' E

DATE: 6/7/2012
PROJECT#: 2012002