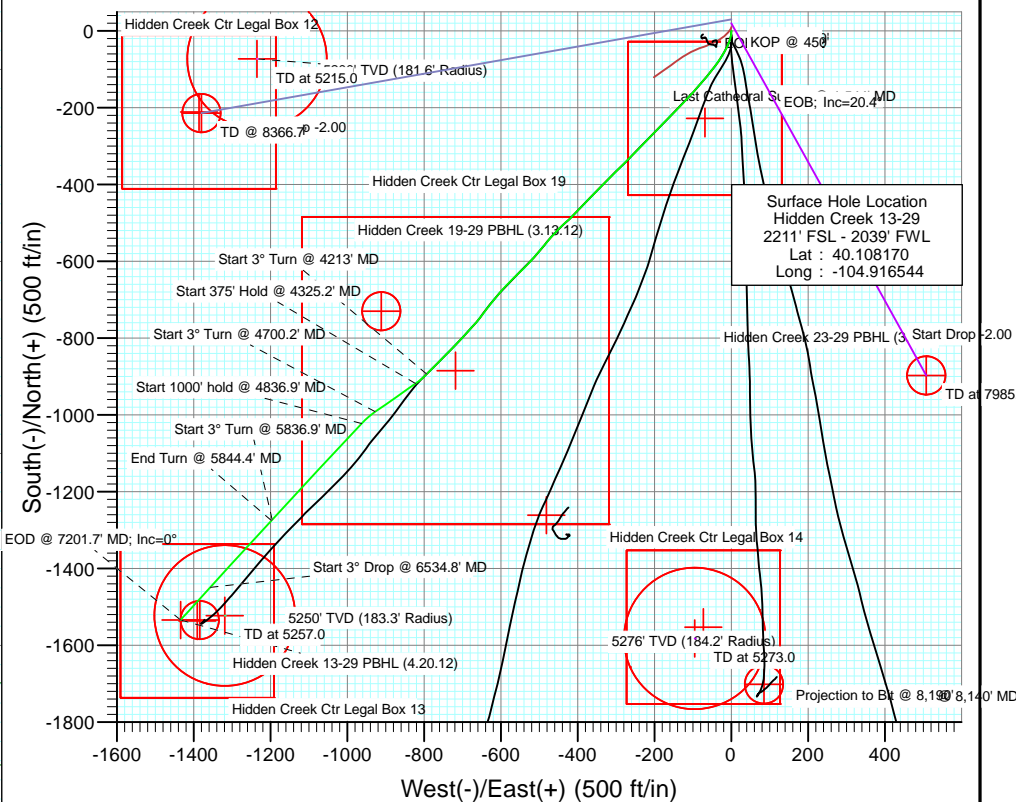


SECTION DETAILS										
Sec	MD	Inc	Azi	TVD	+N/-S	+E/-W	Dleg	TFace	V Sect	Target
1	4213.0	20.01	225.15	4007.3	-893.7	-793.0	0.00	0.00	1194.4	
2	4325.2	20.01	235.00	4112.8	-918.2	-822.4	0.00	94.70	1232.4	
3	4700.2	20.01	235.00	4465.2	-991.8	-927.5	0.00	0.00	1357.9	
4	4836.9	20.01	223.00	4593.7	-1022.4	-962.6	0.00	-95.64	1404.2	
5	5836.9	20.01	223.00	5533.3	-1272.6	-1196.0	0.00	0.00	1746.4	
6	5844.4	20.01	222.34	5540.4	-1274.5	-1197.7	3.00	-91.54	1749.0	
7	6534.8	20.01	222.34	6189.1	-1449.1	-1356.8	0.00	0.00	1985.1	
8	7201.7	0.00	0.00	6842.5	-1534.3	-1434.4	3.00	180.00	2100.4	
9	8596.2	0.00	0.00	8237.0	-1524.2	-1424.4	0.00	0.00	2109.4	Hidden Creek 13.20 BRH1 (4.20-12)



CASING DETAILS

No casing data is available

FORMATION TOP DETAILS

TVDPATH	MDPATH	FORMATION
4195.0	4412.7	PK Depth
4623.0	4868.1	SX Depth
7377.0	7736.2	NIO Depth
7679.0	8038.2	CD Depth
7759.0	8118.2	GH Depth
8097.0	8456.2	J Depth



Azimuths to True North
Magnetic North: 8.80°

Magnetic Field
Strength: 52870.3snT
Dip Angle: 66.76°
Date: 4/20/2012
Model: IGRF2010

Plan #1
Hidden Creek 13-29
KB=15' @ 5045.0ft (Xtreme 14)
North American Datum 1983
Well Hidden Creek 13-29, True North

Type TD	Target No Target (Freehand)	Azimuth 223.07	Origin Type Slot	N/S 0.0	E/W 0.0	From TVD 0.0
Name	TVD	+N/-S	+E/-W	Latitude		Longitude
Hidden Creek 13-29 PBHL (3.13.12)	237.0	-1534.3	-1384.4	40.103958		-104.921493
Hidden Creek 13-29 PBHL (4.20.12)	237.0	-1534.3	-1434.4	40.103958		-104.921672

Planning Report

Database:	USA EDM 5000 Multi Users DB	Local Co-ordinate Reference:	Well Hidden Creek 13-29
Company:	Anadarko Petroleum Corporation	TVD Reference:	KB=15' @ 5045.0ft (Xtreme 14)
Project:	DJ Wattenberg	MD Reference:	KB=15' @ 5045.0ft (Xtreme 14)
Site:	NESW Sec29-T2N-R67W (Hidden Creek)	North Reference:	True
Well:	Hidden Creek 13-29	Survey Calculation Method:	Minimum Curvature
Wellbore:	Stk #1		
Design:	Plan #1		

Project	DJ Wattenberg		
Map System:	US State Plane 1983	System Datum:	Mean Sea Level
Geo Datum:	North American Datum 1983		
Map Zone:	Colorado Northern Zone		

Site		NESW Sec29-T2N-R67W (Hidden Creek)			
Site Position:		Northing:	1,282,820.26 ft	Latitude:	40.108253
From:	Lat/Long	Easting:	3,163,202.98 ft	Longitude:	-104.916544
Position Uncertainty:	0.0 ft	Slot Radius:	13.200 in	Grid Convergence:	0.38 °

Well	Hidden Creek 13-29					
Well Position	+N/-S	0.0 ft	Northing:	1,282,790.02 ft	Latitude:	40.108170
	+E/-W	0.0 ft	Easting:	3,163,203.18 ft	Longitude:	-104.916544
Position Uncertainty		0.0 ft	Wellhead Elevation:	ft	Ground Level:	5,030.0 ft

Wellbore	Stk #1				
Magnetics	Model Name	Sample Date	Declination (°)	Dip Angle (°)	Field Strength (nT)
	IGRF2010	4/20/2012	8.81	66.76	52,870

Design	Plan #1				
Audit Notes:					
Version:	Phase:	PLAN		Tie On Depth:	4,213.0
Vertical Section:	Depth From (TVD) (ft)	+N/-S (ft)	+E/-W (ft)	Direction (°)	
	0.0	0.0	0.0	223.07	

Plan Sections										
Measured Depth (ft)	Inclination (°)	Azimuth (°)	Vertical Depth (ft)	+N/-S (ft)	+E/-W (ft)	Dogleg Rate (°/100ft)	Build Rate (°/100ft)	Turn Rate (°/100ft)	TFO (°)	Target
4,213.0	20.01	225.15	4,007.3	-893.7	-793.0	0.00	0.00	0.00	0.00	
4,325.2	20.01	235.00	4,112.8	-918.2	-822.4	3.00	0.00	8.78	94.70	
4,700.2	20.01	235.00	4,465.2	-991.8	-927.5	0.00	0.00	0.00	0.00	
4,836.9	20.01	223.00	4,593.7	-1,022.4	-962.6	3.00	0.00	-8.78	-95.64	
5,836.9	20.01	223.00	5,533.3	-1,272.6	-1,196.0	0.00	0.00	0.00	0.00	
5,844.4	20.01	222.34	5,540.4	-1,274.5	-1,197.7	3.00	-0.06	-8.77	-91.54	
6,534.8	20.01	222.34	6,189.1	-1,449.1	-1,356.8	0.00	0.00	0.00	0.00	
7,201.7	0.00	0.00	6,842.5	-1,534.3	-1,434.4	3.00	-3.00	0.00	180.00	
8,596.2	0.00	0.00	8,237.0	-1,534.3	-1,434.4	0.00	0.00	0.00	0.00	Hidden Creek 13-29 F

Planning Report

Database:	USA EDM 5000 Multi Users DB	Local Co-ordinate Reference:	Well Hidden Creek 13-29
Company:	Anadarko Petroleum Corporation	TVD Reference:	KB=15' @ 5045.0ft (Xtreme 14)
Project:	DJ Wattenberg	MD Reference:	KB=15' @ 5045.0ft (Xtreme 14)
Site:	NESW Sec29-T2N-R67W (Hidden Creek)	North Reference:	True
Well:	Hidden Creek 13-29	Survey Calculation Method:	Minimum Curvature
Wellbore:	Stk #1		
Design:	Plan #1		

Planned Survey									
Measured Depth (ft)	Inclination (°)	Azimuth (°)	Vertical Depth (ft)	+N/-S (ft)	+E/-W (ft)	Vertical Section (ft)	Dogleg Rate (°/100ft)	Build Rate (°/100ft)	Comments / Formations
4,213.0	20.01	225.15	4,007.3	-893.7	-793.0	1,194.4	0.00	0.00	Start 3° Turn @ 4213' MD
4,300.0	19.96	232.79	4,089.1	-913.2	-815.4	1,223.9	3.00	-0.06	
4,325.2	20.01	235.00	4,112.8	-918.2	-822.4	1,232.4	3.00	0.18	Start 375' Hold @ 4325.2' MD
4,400.0	20.01	235.00	4,183.1	-932.9	-843.3	1,257.4	0.00	0.00	
4,412.7	20.01	235.00	4,195.0	-935.4	-846.9	1,261.7	0.00	0.00	PK Depth
4,500.0	20.01	235.00	4,277.0	-952.5	-871.4	1,290.9	0.00	0.00	
4,600.0	20.01	235.00	4,371.0	-972.2	-899.4	1,324.4	0.00	0.00	
4,700.0	20.01	235.00	4,465.0	-991.8	-927.4	1,357.9	0.00	0.00	
4,700.2	20.01	235.00	4,465.2	-991.8	-927.5	1,357.9	0.00	0.00	Start 3° Turn @ 4700.2' MD
4,800.0	19.93	226.23	4,559.0	-1,013.4	-953.7	1,391.6	3.00	-0.08	
4,836.9	20.01	223.00	4,593.7	-1,022.4	-962.6	1,404.2	3.00	0.22	Start 1000' hold @ 4836.9' MD
4,868.1	20.01	223.00	4,623.0	-1,030.2	-969.9	1,414.9	0.00	0.00	SX Depth
4,900.0	20.01	223.00	4,653.0	-1,038.2	-977.3	1,425.8	0.00	0.00	
5,000.0	20.01	223.00	4,746.9	-1,063.2	-1,000.7	1,460.0	0.00	0.00	
5,100.0	20.01	223.00	4,840.9	-1,088.2	-1,024.0	1,494.2	0.00	0.00	
5,200.0	20.01	223.00	4,934.8	-1,113.2	-1,047.3	1,528.5	0.00	0.00	
5,300.0	20.01	223.00	5,028.8	-1,138.3	-1,070.7	1,562.7	0.00	0.00	
5,400.0	20.01	223.00	5,122.8	-1,163.3	-1,094.0	1,596.9	0.00	0.00	
5,500.0	20.01	223.00	5,216.7	-1,188.3	-1,117.3	1,631.1	0.00	0.00	
5,600.0	20.01	223.00	5,310.7	-1,213.3	-1,140.7	1,665.3	0.00	0.00	
5,700.0	20.01	223.00	5,404.7	-1,238.4	-1,164.0	1,699.6	0.00	0.00	
5,800.0	20.01	223.00	5,498.6	-1,263.4	-1,187.4	1,733.8	0.00	0.00	
5,836.9	20.01	223.00	5,533.3	-1,272.6	-1,196.0	1,746.4	0.00	0.00	Start 3° Turn @ 5836.9' MD
5,844.4	20.01	222.34	5,540.4	-1,274.5	-1,197.7	1,749.0	3.00	-0.06	End Turn @ 5844.4' MD
5,900.0	20.01	222.34	5,592.6	-1,288.6	-1,210.5	1,768.0	0.00	0.00	
6,000.0	20.01	222.34	5,686.6	-1,313.9	-1,233.6	1,802.2	0.00	0.00	
6,100.0	20.01	222.34	5,780.5	-1,339.2	-1,256.6	1,836.4	0.00	0.00	
6,200.0	20.01	222.34	5,874.5	-1,364.4	-1,279.6	1,870.6	0.00	0.00	
6,300.0	20.01	222.34	5,968.5	-1,389.7	-1,302.7	1,904.8	0.00	0.00	
6,400.0	20.01	222.34	6,062.4	-1,415.0	-1,325.7	1,939.0	0.00	0.00	
6,500.0	20.01	222.34	6,156.4	-1,440.3	-1,348.8	1,973.2	0.00	0.00	
6,534.8	20.01	222.34	6,189.1	-1,449.1	-1,356.8	1,985.1	0.00	0.00	Start 3° Drop @ 6534.8' MD
6,600.0	18.05	222.34	6,250.7	-1,464.8	-1,371.1	2,006.4	3.00	-3.00	
6,700.0	15.05	222.34	6,346.6	-1,485.9	-1,390.3	2,034.9	3.00	-3.00	
6,800.0	12.05	222.34	6,443.8	-1,503.2	-1,406.1	2,058.3	3.00	-3.00	
6,900.0	9.05	222.34	6,542.1	-1,516.7	-1,418.4	2,076.6	3.00	-3.00	
7,000.0	6.05	222.34	6,641.2	-1,526.4	-1,427.2	2,089.7	3.00	-3.00	
7,100.0	3.05	222.34	6,740.9	-1,532.3	-1,432.6	2,097.7	3.00	-3.00	
7,200.0	0.05	222.34	6,840.8	-1,534.3	-1,434.4	2,100.4	3.00	-3.00	
7,201.7	0.00	0.00	6,842.5	-1,534.3	-1,434.4	2,100.4	3.00	-3.00	EOD @ 7201.7' MD; Inc=0°
7,300.0	0.00	0.00	6,940.8	-1,534.3	-1,434.4	2,100.4	0.00	0.00	
7,400.0	0.00	0.00	7,040.8	-1,534.3	-1,434.4	2,100.4	0.00	0.00	
7,500.0	0.00	0.00	7,140.8	-1,534.3	-1,434.4	2,100.4	0.00	0.00	
7,600.0	0.00	0.00	7,240.8	-1,534.3	-1,434.4	2,100.4	0.00	0.00	
7,700.0	0.00	0.00	7,340.8	-1,534.3	-1,434.4	2,100.4	0.00	0.00	
7,736.2	0.00	0.00	7,377.0	-1,534.3	-1,434.4	2,100.4	0.00	0.00	NIO Depth
7,800.0	0.00	0.00	7,440.8	-1,534.3	-1,434.4	2,100.4	0.00	0.00	
7,900.0	0.00	0.00	7,540.8	-1,534.3	-1,434.4	2,100.4	0.00	0.00	
8,000.0	0.00	0.00	7,640.8	-1,534.3	-1,434.4	2,100.4	0.00	0.00	
8,038.2	0.00	0.00	7,679.0	-1,534.3	-1,434.4	2,100.4	0.00	0.00	CD Depth
8,100.0	0.00	0.00	7,740.8	-1,534.3	-1,434.4	2,100.4	0.00	0.00	
8,118.2	0.00	0.00	7,759.0	-1,534.3	-1,434.4	2,100.4	0.00	0.00	GH Depth

Planning Report

Database:	USA EDM 5000 Multi Users DB	Local Co-ordinate Reference:	Well Hidden Creek 13-29
Company:	Anadarko Petroleum Corporation	TVD Reference:	KB=15' @ 5045.0ft (Xtreme 14)
Project:	DJ Wattenberg	MD Reference:	KB=15' @ 5045.0ft (Xtreme 14)
Site:	NESW Sec29-T2N-R67W (Hidden Creek)	North Reference:	True
Well:	Hidden Creek 13-29	Survey Calculation Method:	Minimum Curvature
Wellbore:	Stk #1		
Design:	Plan #1		

Planned Survey

Measured Depth (ft)	Inclination (°)	Azimuth (°)	Vertical Depth (ft)	+N/-S (ft)	+E/-W (ft)	Vertical Section (ft)	Dogleg Rate (°/100ft)	Build Rate (°/100ft)	Comments / Formations
8,200.0	0.00	0.00	7,840.8	-1,534.3	-1,434.4	2,100.4	0.00	0.00	
8,300.0	0.00	0.00	7,940.8	-1,534.3	-1,434.4	2,100.4	0.00	0.00	
8,400.0	0.00	0.00	8,040.8	-1,534.3	-1,434.4	2,100.4	0.00	0.00	
8,456.2	0.00	0.00	8,097.0	-1,534.3	-1,434.4	2,100.4	0.00	0.00	J Depth
8,500.0	0.00	0.00	8,140.8	-1,534.3	-1,434.4	2,100.4	0.00	0.00	
8,596.2	0.00	0.00	8,237.0	-1,534.3	-1,434.4	2,100.4	0.00	0.00	TD @ 8596.2' MD

Targets

Target Name	Dip Angle (°)	Dip Dir. (°)	TVD (ft)	+N/-S (ft)	+E/-W (ft)	Northing (ft)	Easting (ft)	Latitude	Longitude
- hit/miss target									
- Shape									
Hidden Creek 13-29 PBI	0.00	0.00	8,237.0	-1,534.3	-1,384.4	1,281,246.65	3,161,828.93	40.103958	-104.921493
- plan misses target center by 50.0ft at 8596.2ft MD (8237.0 TVD, -1534.3 N, -1434.4 E)									
- Circle (radius 50.0)									
Hidden Creek 13-29 PBI	0.00	0.00	8,237.0	-1,534.3	-1,434.4	1,281,246.32	3,161,778.90	40.103958	-104.921672
- plan hits target center									
- Circle (radius 50.0)									

Formations

Measured Depth (ft)	Vertical Depth (ft)	Name	Lithology	Dip (°)	Dip Direction (°)
4,412.7	4,195.0	PK Depth		0.00	
4,868.1	4,623.0	SX Depth		0.00	
7,736.2	7,377.0	NIO Depth		0.00	
8,038.2	7,679.0	CD Depth		0.00	
8,118.2	7,759.0	GH Depth		0.00	
8,456.2	8,097.0	J Depth		0.00	

Plan Annotations

	Measured	Vertical	Local Coordinates		Comment
	Depth (ft)	Depth (ft)	+N/-S (ft)	+E/-W (ft)	
	4,213.0	4,007.3	-893.7	-793.0	Start 3° Turn @ 4213' MD
	4,325.2	4,112.8	-918.2	-822.4	Start 375' Hold @ 4325.2' MD
	4,700.2	4,465.2	-991.8	-927.5	Start 3° Turn @ 4700.2' MD
	4,836.9	4,593.7	-1,022.4	-962.6	Start 1000' hold @ 4836.9' MD
	5,836.9	5,533.3	-1,272.6	-1,196.0	Start 3° Turn @ 5836.9' MD
	5,844.4	5,540.4	-1,274.5	-1,197.7	End Turn @ 5844.4' MD
	6,534.8	6,189.1	-1,449.1	-1,356.8	Start 3° Drop @ 6534.8' MD
	7,201.7	6,842.5	-1,534.3	-1,434.4	EOD @ 7201.7' MD; Inc=0°
	8,596.2	8,237.0	-1,534.3	-1,434.4	TD @ 8596.2' MD