
WILLIAMS PRODUCTION RMT INC - EBUS

**PA 512-7
PARACHUTE
Garfield County , Colorado**

Cement Surface Casing
29-Aug-2011

Job Site Documents

The Road to Excellence Starts with Safety

Sold To #: 300721	Ship To #: 2873078	Quote #:	Sales Order #: 8407649
Customer: WILLIAMS PRODUCTION RMT INC - EBUS	Customer Rep: TOWERS, RON		
Well Name: PA	Well #: 512-7	API/UWI #: 05-045-20162	
Field: PARACHUTE	City (SAP): PARACHUTE	County/Parish: Garfield	State: Colorado
Lat: N 39.456 deg. OR N 39 deg. 27 min. 23.216 secs.	Long: W 108.044 deg. OR W -109 deg. 57 min. 22.129 secs.		
Contractor: NABORS 574	Rig/Platform Name/Num: Nabors 574		
Job Purpose: Cement Surface Casing			
Well Type: Development Well	Job Type: Cement Surface Casing		
Sales Person: KOHL, KYLE	Srvc Supervisor: PONDER, THOMAS	MBU ID Emp #: 427112	

Job Personnel

HES Emp Name	Exp Hrs	Emp #	HES Emp Name	Exp Hrs	Emp #	HES Emp Name	Exp Hrs	Emp #
MAGERS, MICHAEL Gerard	7	339439	PONDER, THOMAS Lynn	7	427112	SINCLAIR, DAN J	7	338784

Equipment

HES Unit #	Distance-1 way	HES Unit #	Distance-1 way	HES Unit #	Distance-1 way	HES Unit #	Distance-1 way
10565341	60 mile	10804567	60 mile	10872429	60 mile	11259886	60 mile
11360883	60 mile						

Job Hours

Date	On Location Hours	Operating Hours	Date	On Location Hours	Operating Hours	Date	On Location Hours	Operating Hours
08/29/2011	7	2						

TOTAL Total is the sum of each column separately

Job

Formation Name					Date				Time		Time Zone					
Formation Depth (MD)		Top		Bottom		Called Out			28 - Aug - 2011		21:30		MST			
Form Type				BHST		On Location			29 - Aug - 2011		01:00		MST			
Job depth MD		1150. ft		Job Depth TVD		1150. ft		Job Started			29 - Aug - 2011		06:10		MST	
Water Depth				Wk Ht Above Floor		4. ft		Job Completed			29 - Aug - 2011		07:08		MST	
Perforation Depth (MD)		From				To		Departed Loc			29 - Aug - 2011		08:00		MST	

Well Data

Description	New / Used	Max pressure psig	Size in	ID in	Weight lbm/ft	Thread	Grade	Top MD ft	Bottom MD ft	Top TVD ft	Bottom TVD ft
OPEN HOLE				13.5					1180.		
SURFACE CASING	Unknown		9.625	9.001	32.3		H-40		1164.		

Sales/Rental/3rd Party (HES)

Description	Qty	Qty uom	Depth	Supplier
PLUG,CMTG,TOP,9 5/8,HWE,8.16 MIN/9.06 MA	1	EA		

Tools and Accessories

Type	Size	Qty	Make	Depth	Type	Size	Qty	Make	Depth	Type	Size	Qty	Make
Guide Shoe					Packer					Top Plug	9 5/8	1	HES
Float Shoe					Bridge Plug					Bottom Plug			
Float Collar					Retainer					SSR plug set			
Insert Float										Plug Container	9 5/8	1	HES
Stage Tool										Centralizers			

Miscellaneous Materials

Gelling Agt	Conc	Surfactant	Conc	Acid Type	Qty	Conc	%
Treatment Fld	Conc	Inhibitor	Conc	Sand Type	Size	Qty	

Fluid Data

Stage/Plug #: 1									
Fluid #	Stage Type	Fluid Name	Qty	Qty uom	Mixing Density lbm/gal	Yield ft3/sk	Mix Fluid Gal/sk	Rate bbl/min	Total Mix Fluid Gal/sk

1	Water Spacer		20.00	bbl	8.34	.0	.0	.0	
2	Lead Cement	VERSACEM (TM) SYSTEM (452010)	160.0	sacks	12.3	2.38	13.75		13.75
	13.75 Gal	FRESH WATER							
3	Tail Cement	VERSACEM (TM) SYSTEM (452010)	160.0	sacks	12.8	2.11	11.75		11.75
	11.75 Gal	FRESH WATER							
4	Displacement Fluid		89.00	bbl	8.34	.0	.0	10.0	
Calculated Values		Pressures		Volumes					
Displacement	88.6	Shut In: Instant		Lost Returns		Cement Slurry	127.9	Pad	
Top Of Cement	SURFACE	5 Min		Cement Returns	16	Actual Displacement	88.6	Treatment	
Frac Gradient		15 Min		Spacers	20	Load and Breakdown		Total Job	236
Rates									
Circulating	10	Mixing	8	Displacement	10	Avg. Job		8	
Cement Left In Pipe	Amount	38 ft	Reason	Shoe Joint					
Frac Ring # 1 @	ID	Frac ring # 2 @	ID	Frac Ring # 3 @	ID	Frac Ring # 4 @	ID		
The Information Stated Herein Is Correct				Customer Representative Signature					

The Road to Excellence Starts with Safety

Sold To #: 300721	Ship To #: 2873078	Quote #:	Sales Order #: 8407649
Customer: WILLIAMS PRODUCTION RMT INC - EBUS		Customer Rep: TOWERS, RON	
Well Name: PA	Well #: 512-7	API/UWI #: 05-045-20162	
Field: PARACHUTE	City (SAP): PARACHUTE	County/Parish: Garfield	State: Colorado
Legal Description:			
Lat: N 39.456 deg. OR N 39 deg. 27 min. 23.216 secs.		Long: W 108.044 deg. OR W -109 deg. 57 min. 22.129 secs.	
Contractor: NABORS 574		Rig/Platform Name/Num: Nabors 574	
Job Purpose: Cement Surface Casing			Ticket Amount:
Well Type: Development Well		Job Type: Cement Surface Casing	
Sales Person: KOHL, KYLE		Srv Supervisor: PONDER, THOMAS	MBU ID Emp #: 427112

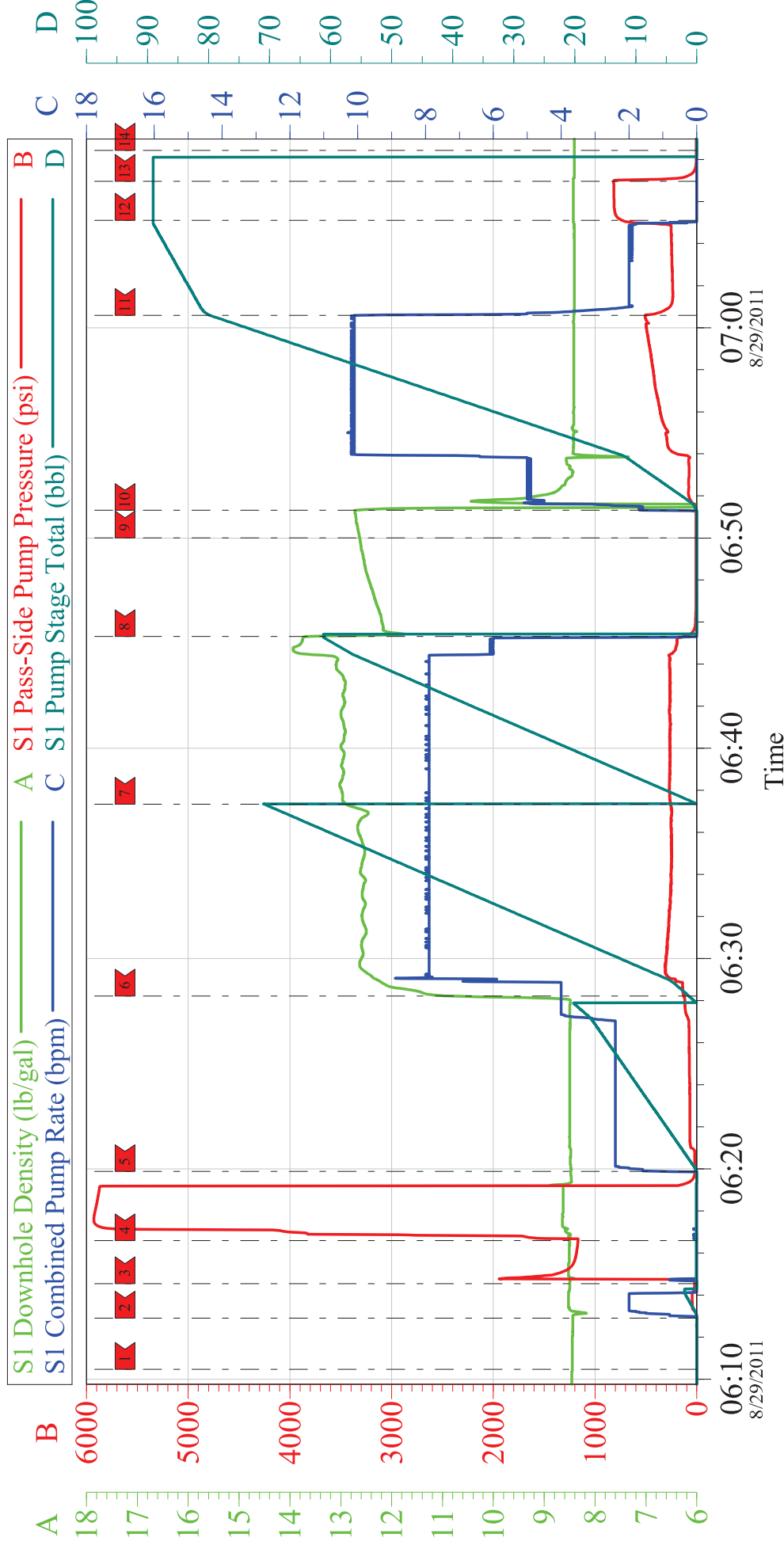
Activity Description	Date/Time	Cht #	Rate bbl/min	Volume bbl		Pressure psig		Comments
				Stage	Total	Tubing	Casing	
Call Out	08/28/2011 21:30							
Crew Leave Yard	08/28/2011 23:30							ALL HES PRESENT FOR PRE-CONVOY SAFETY HUDDLE
Arrive At Loc	08/29/2011 01:00							RIG WAS PULLING DRILL PIPE WHEN CREW ARRIVED ON LOCATION
Assessment Of Location Safety Meeting	08/29/2011 05:00							TD- 1180', TP- 1164', SJ- 38', MUD- 10.4 PPG, HOLE- 13 1/2", SURFACE CASING- 9 5/8" 32.3# H-40
Rig-Up Equipment	08/29/2011 05:15							RIG STARTED CIRCULATION ON BOTTOM @ 0500
Safety Meeting	08/29/2011 06:00							ALL HES PRESENT, RIG CREW PRESENT
Start Job	08/29/2011 06:10							
Other	08/29/2011 06:12		2	2			45.0	FILL LINES
Test Lines	08/29/2011 06:14		0.1	0.1			5929.0	
Pump Spacer 1	08/29/2011 06:19		6	20			128.0	FRESH WATER
Pump Lead Cement	08/29/2011 06:28		8	67.8			312.0	160 SKS 12.3 PPG 2.38 FT3/SK 13.75 GAL/SK
Pump Tail Cement	08/29/2011 06:37		8	60.1			273.0	160 SKS 12.8 PPG 2.11 FT3/SK 11.75 GAL/SK
Shutdown	08/29/2011 06:45							

Activity Description	Date/Time	Cht #	Rate bbl/ min	Volume bbl		Pressure psig		Comments
				Stage	Total	Tubing	Casing	
Drop Plug	08/29/2011 06:50							PLUG DROP VERIFIED VIA TATTLE TELL BY CUSTOMER REP
Pump Displacement	08/29/2011 06:51		10	88.6			511.0	FRESH WATER, WASHED UP ON TOP OF THE PLUG AS [ER CUSTOMER REQUEST
Slow Rate	08/29/2011 07:00		2	78.6			236.0	GOOD RETURNS THROUGH OUT THE JOB, CIRCULATED 16 BBL CEMENT TO SURFACE
Bump Plug	08/29/2011 07:05		2	88.6			299.0	PLUG BUMPED
Check Floats	08/29/2011 07:06						818.0	FLOATS HELD, .5 BBL BACK TO THE DISPLACEMENT TANKS
End Job	08/29/2011 07:08							THANK YOU FOR CHOOSING HALLIBURTON, THOMAS PONDER AND CREW

WILLIAMS PA 512-7, 9 5/8" SURFACE

EVENT #	EVENT	VOLUME	SACKS	WEIGHT	YIELD	GAL/ SK	BBLs H2O REQ
1	Start Job		1120		Max Psi		
6	Test Lines	5000.0					
9	H2O Spacer	20.0					
14	LEAD	67.8	160	12.3	2.38	13.75	52.4
	TAIL	60.1	160	12.8	2.11	11.75	44.8
32	Drop Plug	0.0					
23	Displacement	88.6					
26	Bump Plug	244.0					
511	Check Floats	744.0					
2	End Job	0.0					
TOTAL PIPE	1164	OH ANN CAPACITY	101.27		BBL/FT	H2O REQ.	
SHOE JOINT	38.00	SJ CAPACITY	2.99	CSG CAP	0.0787	235.8	
FLOAT COLLAR	1126.00	Displacement	88.62	CSG & OH	0.0870		
CALCULATED DIFFERENTIAL PSI			244.0	XS CMT	23.7		
Collapse	1400	Burst	2270		SO#	8407649	
CALCULATED PSI LIFT PIPE OUT OF HOLE			84.5		Total Fluid	236.6	

WILLIAMS
PA 512-7, 9.625 IN SURFACE



Customer: WILLIAMS	Job Date: 29-Aug-2011	Sales Order #: 8407649
Well Description: PA 512-7	Job Type: SURFACE	ADC Used: YES
Company Rep: RON TOWERS	Cement Supervisor: THOMAS PONDER	Elite #/Operator: ELITE #7 / DAN SINCLAIR