



April 17, 2012

Colorado Oil and Gas Conservation Commission
The Chancery Building
1120 Lincoln Street, Suite 801
Denver, CO 80203

Attn: Mr. David Neslin, Director

RE: Well: 70 Ranch 5-63-22-58H
Niobrara New Drill
Township 5 North, Range 63 West, 6th P.M.
Section 22: E/2E/2
SHL: NE/4NE/4
Weld County, Colorado

Mr. Neslin

Bill Barrett Corporation ("BBC") is planning to drill the captioned boundary well in accordance with the provisions of COGCC 318A.e.

BBC's proposed wellbore spacing units consists of the E/2E/2 of Section 22, T5N, R63W, creating the above referenced spacing units per well in which we will target the Niobrara formation. In accordance with COGCC Rule 318A.e.(6), Bill Barrett Corporation owns one hundred percent (100%) of the Proposed Spacing Unit, therefore, we did not need to notify any other owners.

Enclosed are copies of the following documents to assist you in your review and approval of BBC's proposed APD for the captioned well.

- Plat illustrating the proposed wellbore spacing unit on existing location plat.

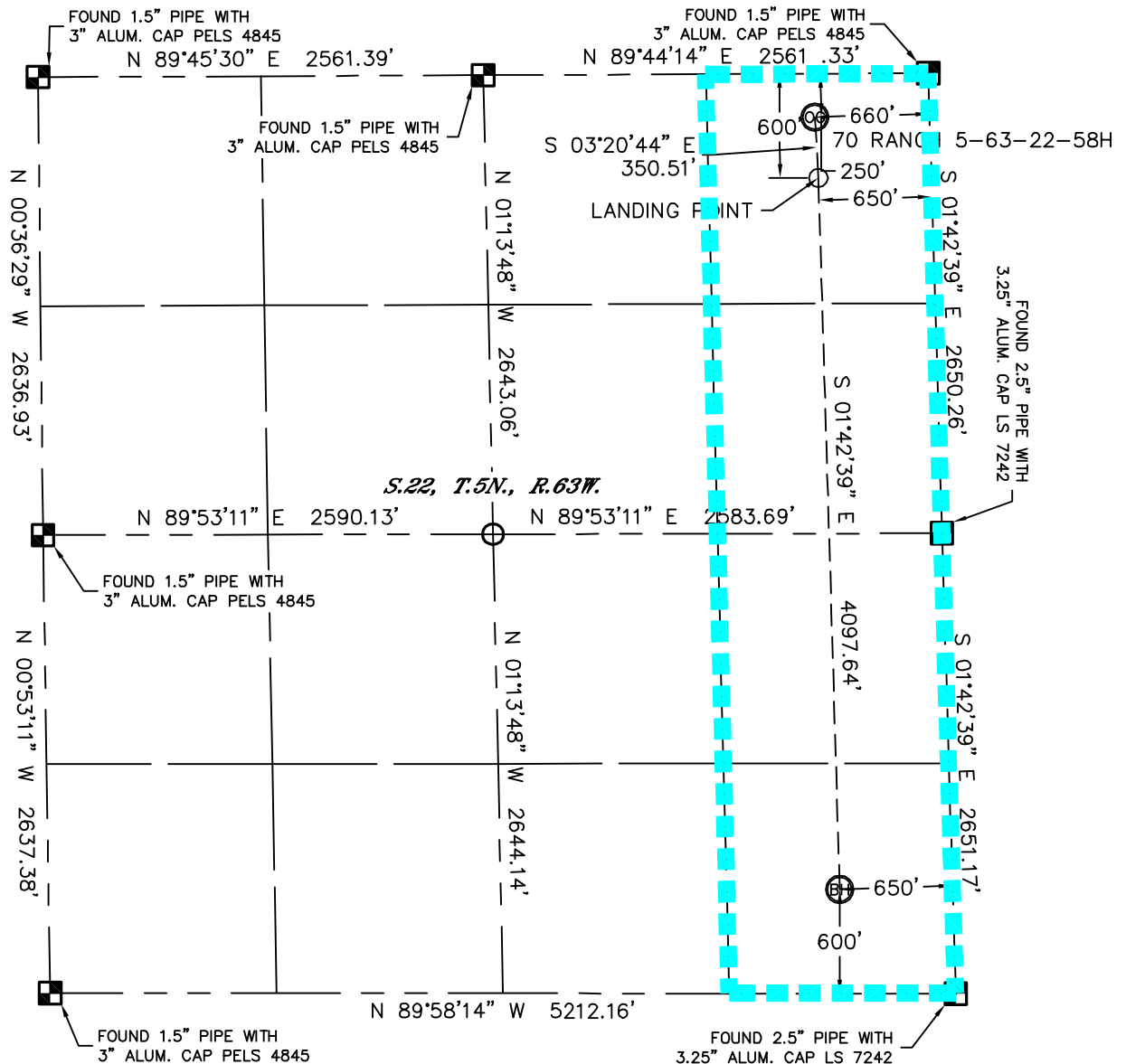
Thank you for your attention to the enclosed. BBC respectfully requests that the COGCC review the enclosed information and approve the Application for Permit to Drill the captioned well.

Sincerely,


Wes DiGrappa
Land Assistant

PROPOSED SPACING UNIT

SECTION: 22
TOWNSHIP: 5N
RANGE: 63W



In accordance with a request from Glenn Berglund with BILL BARRETT CORPORATION, Lat40', Inc. has determined, and staked on the ground as shown, the surface location of the 70 RANCH 5-63-22-58H to be 250' from the NORTH line and 660' from the EAST line and the bottom hole to be 600' from the SOUTH line and 650' from the EAST line as measured at right angles from the section lines of Section 22, Township 5 North, Range 63 West of the Sixth Principal Meridian, County of Weld, State of Colorado.

I hereby state that this Well Location Certificate was prepared by me, or under my direct supervision, that the fieldwork was completed on 3/22/11, for and on behalf of BILL BARRETT CORPORATION. That this is not a Land Survey Plat or an Improvement Survey Plat, and that it is not to be relied upon for establishment of fence, building, or other future improvement lines.

NOTE:

- 1) Bearings shown are Grid Bearings of the Colorado State Plane Coordinate System, North Zone, North American Datum 1983/2007. The lineal dimensions as contained herein are based upon the "U.S. Survey Foot."
- 2) Ground elevations are based on an observed GPS elevation (NAVD 1988 DATUM).
- 3) IMPROVEMENTS: See LOCATION DRAWING exhibit for all visible improvements within 400' of disturbed area.
- 4) SURFACE USE: RANGELAND
- 5) INSTRUMENT OPERATOR: BRIAN BRINKMAN

SURFACE LOCATION

LAT: 40.39139°N (40°23'29.0"N) LAT: 40.37918°N (40°22'45.1"N)
LONG: 104.41511°W (104°24'54.4"W) LONG: 104.41479°W (104°24'53.3"N)
PDOP: 1.2
ELEV: 4637'
1/4,1/4: NE1/4NE1/4
NEAREST PROPERTY LINE: 250' NORTH

BOTTOM HOLE

LAT: 40.37918°N (40°22'45.1"N)
LONG: 104.41479°W (104°24'53.3"W)

LANDING POINT

LAT: 40.39043°N (40°23'25.5"N)
LONG: 104.41505°W (104°24'54.2"W)

NOTE

NOTE
According to Colorado law, you must commence any legal action based upon any defect in this W.L.C. within three years after you discover such defect. In no event, may any action based upon any defect in this survey be commenced more than ten years after the date of the certificate shown hereon. (13-80-105 C.R.S.)

LEGEND



= ALIQUOT MONUMENT AS DESCRIBED



= CALCULATED POSITION

DATE: 3/7/12
PROJECT#: 2010044