

**CHEVRON - MID-CONTINENT EBIZ  
11111 S WILCREST DR - DO NOT MAIL  
HOUSTON, Texas**

SKR  
SKR 598-36-BV-10

**CHEVRON/H&P/316**

## **Post Job Summary**

# **Cement Production Casing**

Prepared for:  
Date Prepared:  
Version: 1

*Service Supervisor: FEUERBORN, JOHN*

Submitted by:

**HALLIBURTON**

## The Road to Excellence Starts with Safety

Sold To #: 338668	Ship To #: 2695484	Quote #:	Sales Order #: 6514484
Customer: CHEVRON - MID-CONTINENT EBIZ		Customer Rep: DOHERTY, ED	
Well Name: SKR		Well #: 598-36-BV-10	API/UWI #:
Field: PICEANCE	City (SAP): PARACHUTE	County/Parish: Garfield	State: Colorado
Contractor: CHEVRON		Rig/Platform Name/Num: H&P 316	
Job Purpose: Cement Production Casing			
Well Type: Development Well		Job Type: Cement Production Casing	
Sales Person: DUNNING, DUSTIN		Srv Supervisor: FEUERBORN, JOHN	MBU ID Emp #: 381677

## Job Personnel

HES Emp Name	Exp Hrs	Emp #	HES Emp Name	Exp Hrs	Emp #	HES Emp Name	Exp Hrs	Emp #
ANDERSON, ADAM	5	456683	CHRISTOFFERSON, JUSTIN Wayne	5	435308	FEUERBORN, JOHN William	5	381677
HONE, AARON D	5	381285	MAYO, MARK Eaton	5	314204	SALAZAR, PAUL Omar	5	445614
SAUTER, MARK A	5	410526	WILKINSON, JAMES	5	459794			

## Equipment

HES Unit #	Distance-1 way	HES Unit #	Distance-1 way	HES Unit #	Distance-1 way	HES Unit #	Distance-1 way
10025012C	120 mile	10025121	120 mile	10243540C	120 mile	10719771	120 mile
10857016	120 mile	10872113	120 mile				

## Job Hours

Date	On Location Hours	Operating Hours	Date	On Location Hours	Operating Hours	Date	On Location Hours	Operating Hours

TOTAL	Total is the sum of each column separately							
-------	--	--	--	--	--	--	--	--

## Job

Formation Name	Job Times			
Formation Depth (MD)	Top	Bottom	Called Out	Date
Form Type	BHST		On Location	13 - Mar - 2009
Job depth MD	7510. ft	Job Depth TVD	5986. ft	Job Started
Water Depth		Wk Ht Above Floor	4. ft	Job Completed
Perforation Depth (MD)	From	To	Departed Loc	

## Well Data

Description	New / Used	Max pressure psig	Size in	ID in	Weight lbm/ft	Thread	Grade	Top MD ft	Bottom MD ft	Top TVD ft	Bottom TVD ft
-------------	------------	-------------------	---------	-------	---------------	--------	-------	-----------	--------------	------------	---------------

Sales/Rental/3<sup>rd</sup> Party (HES)

Description	Qty	Qty uom	Depth	Supplier
PLUG, CMTG, TOP, 4 1/2, HW, 3.65 MIN/4.14 MA	1	EA		
PORT. DAS W/CEMWIN, ACQUIRE W/HES, ZI	1	JOB		
ADC (AUTO DENSITY CTRL) SYS, /JOB, ZI	1	JOB		

## Tools and Accessories

Type	Size	Qty	Make	Depth	Type	Size	Qty	Make	Depth	Type	Size	Qty	Make
Guide Shoe					Packer					Top Plug			
Float Shoe					Bridge Plug					Bottom Plug			
Float Collar					Retainer					SSR plug set			
Insert Float										Plug Container			
Stage Tool										Centralizers			

## Miscellaneous Materials

Gelling Agt	Conc	Surfactant	Conc	Acid Type	Qty	Conc	%
Treatment Fld	Conc	Inhibitor	Conc	Sand Type	Size	Qty	



Fluid Data									
Stage/Plug #: 1									
Fluid #	Stage Type	Fluid Name	Qty	Qty uom	Mixing Density lbm/gal	Yield ft <sup>3</sup> /sk	Mix Fluid Gal/sk	Rate bbl/min	Total Mix Fluid Gal/sk
1	TUNED SPACER III	TUNED SPACER III - SBM (483826)	50	bbl	11.6	.0	.0	.0	
		35.94 gal/bbl							
		154.82 lbm/bbl							
		0.03 lbm/bbl							
		FRESH WATER							
		BARITE, BULK (100003681)							
		D-AIR 3000 (101007446)							
2	Lead Cement	VARICEM (TM) CEMENT (452009)	113.9	sacks	12.8	1.6	7.31		
3	Tail Cement	VARICEM (TM) CEMENT (452009)	193.7	sacks	13.2	1.47	6.32		
4	KCL DISPLACEMENT		115.1	bbl	8.4	.0	.0	.0	
Calculated Values		Pressures		Volumes					
Displacement	115.1	Shut In: Instant		Lost Returns		Cement Slurry	307.6	Pad	
Top Of Cement	76	5 Min		Cement Returns	0	Actual Displacement	115.1	Treatment	
Frac Gradient		15 Min		Spacers		Load and Breakdown		Total Job	
Rates									
Circulating	7	Mixing	7	Displacement	9	Avg. Job	7.5		
Cement Left In Pipe	Amount	0 ft	Reason	Shoe Joint					
Frac Ring # 1 @	ID	Frac ring # 2 @	ID	Frac Ring # 3 @	ID	Frac Ring # 4 @	ID		
The Information Stated Herein Is Correct				Customer Representative Signature					

*The Road to Excellence Starts with Safety*

Sold To #: 338668	Ship To #: 2695484	Quote #:	Sales Order #: 6514484
Customer: CHEVRON - MID-CONTINENT EBIZ	Customer Rep: DOHERTY, ED		
Well Name: SKR	Well #: 598-36-BV-10	API/UWI #:	
Field: PICEANCE	City (SAP): PARACHUTE	County/Parish: Garfield	State: Colorado
Legal Description:			
Lat: N 0 deg. OR N 0 deg. 0 min. 0 secs.		Long: E 0 deg. OR E 0 deg. 0 min. 0 secs.	
Contractor: CHEVRON	Rig/Platform Name/Num: H&P 316		
Job Purpose: Cement Production Casing		Ticket Amount:	
Well Type: Development Well	Job Type: Cement Production Casing		
Sales Person: DUNNING, DUSTIN	Srv Supervisor: FEUERBORN, JOHN	MBU ID Emp #: 381677	

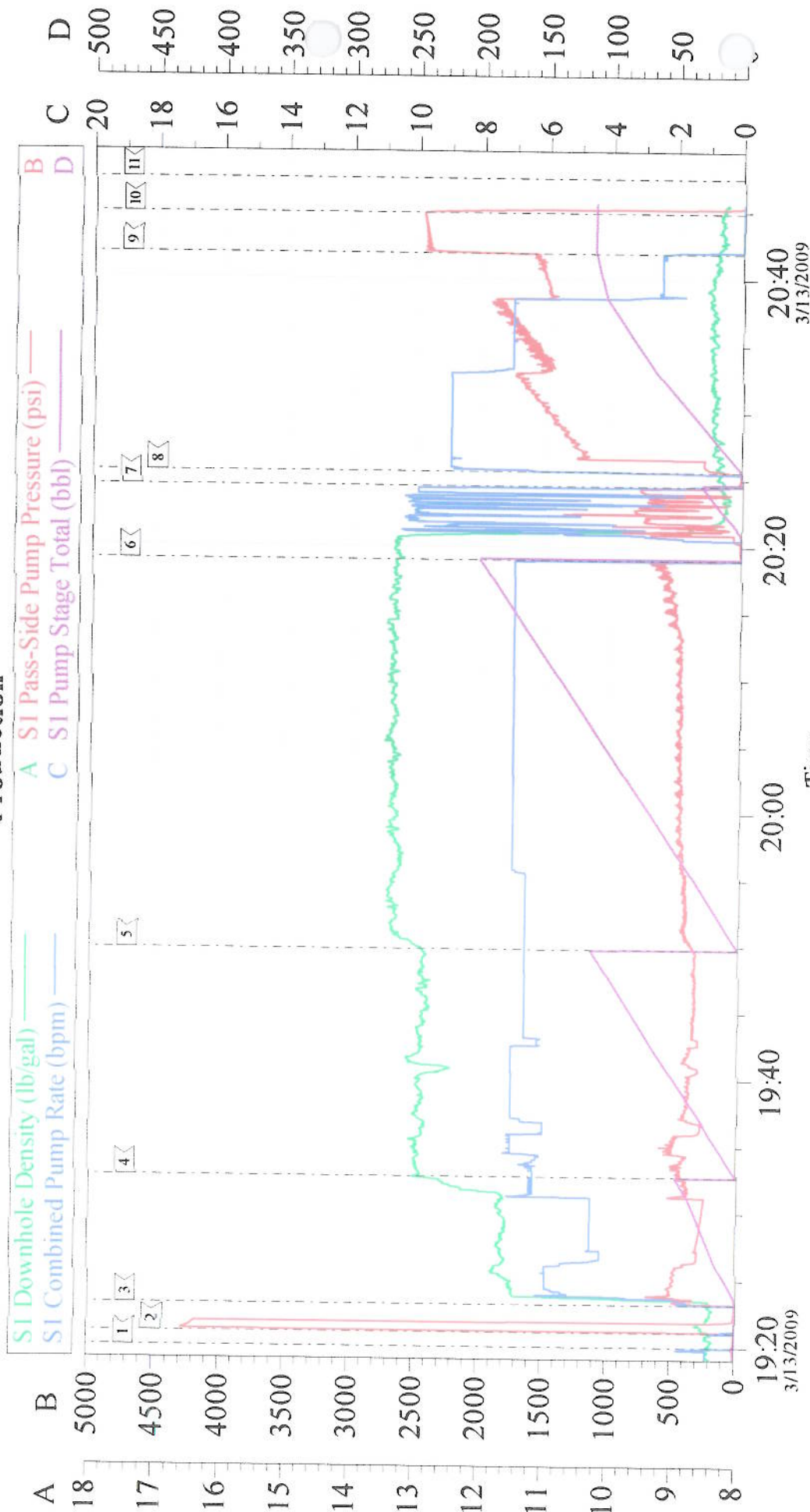
Activity Description	Date/Time	Cht #	Rate bbl/min	Volume bbl		Pressure psig		Comments
				Stage	Total	Tubing	Casing	
Depart Yard Safety Meeting	03/13/2009 12:30							
Crew Leave Yard	03/13/2009 12:45							
Arrive At Loc	03/13/2009 14:30							
Safety Meeting - Assessment of Location	03/13/2009 14:35							
Other	03/13/2009 14:50							SPOT EQUIPMENT
Pre-Rig Up Safety Meeting	03/13/2009 15:00							
Rig-Up Equipment	03/13/2009 15:10							USED TARP UNDER PUMP TRUCK
Other	03/13/2009 17:30							RIG CIRCULATING ON BOTTOM
Pre-Job Safety Meeting	03/13/2009 18:50							
Start Job	03/13/2009 19:19							7474.28 TOTAL PIPE 46.43 SHOE JOINT 10.1 MUD PREV CASING 1405 8.625 24#
Test Lines	03/13/2009 19:23							4000psi ON TRUCK AND LINES
Pump Spacer 1	03/13/2009 19:25		7	50			480.0	TUNED SPACER 11.6ppg BP 17
Pump Lead Cement	03/13/2009 19:35		7	113.9			575.0	400skts PUMPED AT 12.8ppg 1.6y 7.31wr TOP OF LEAD 76' BP 20
Pump Tail Cement	03/13/2009 19:52		7	193.7			470.0	740skts PUMPED AT 13.2ppg 1.47y 6.32wr TOP OF TAIL 2721' BP 20

## Cementing Job Log

Activity Description	Date/Time	Cht #	Rate bbl/min	Volume bbl		Pressure psig		Comments
				Stage	Total	Tubing	Casing	
Clean Lines	03/13/2009 20:21							
Drop Top Plug	03/13/2009 20:27							PLUG AWAY
Pump Displacement	03/13/2009 20:28		9				1913.0	H2O 850# KCL SLOWED TO 7 BBLS AT 65 AWAY RIG HAD 3 SHAKERS GOING AND WE WHERE OVER FLOWING THEM
Other	03/13/2009 20:41		2.5	105			1600.0	SLOW RATE
Bump Plug	03/13/2009 20:44		2.5	115.1			2500.0	
Check Floats	03/13/2009 20:47							HOLDING
End Job	03/13/2009 20:48							GOOD RETURNS PIPE LEFT STATIC 35BBLS TUNDESPACER TO SURFACE
Post-Job Safety Meeting (Pre Rig-Down)	03/13/2009 20:55							
Safety Meeting - Departing Location	03/13/2009 23:00							
Crew Leave Location	03/13/2009 23:15							



# Chevron Production



Customer: CHEVRON - MID-CONTINENT	Job Date: 13-Mar-2009	Sales Order #: 6514484
Well Description: Skinner Ridge 598-36-BV-10	Job Type: Production	ADC Used: Yes
Company Rep: Ed Doherty	Cement Supervisor: John Feuerborn	Elite #: 10