
CHEVRON - MID-CONTINENT EBIZ

**SKR 598-36-BV-10
PICEANCE
Garfield County , Colorado**

Cement Surface Casing
07-Mar-2009

Job Site Documents

The Road to Excellence Starts with Safety

Sold To #: 338668	Ship To #: 2695484	Quote #:	Sales Order #: 6547748
Customer: CHEVRON - MID-CONTINENT EBIZ	Customer Rep:		
Well Name: SKR	Well #: 598-36-BV-10	API/UWI #:	
Field: PICEANCE	City (SAP): PARACHUTE	County/Parish: Garfield	State: Colorado
Contractor: H&P 316	Rig/Platform Name/Num: H&P 316		
Job Purpose: Cement Surface Casing			
Well Type: Development Well	Job Type: Cement Surface Casing		
Sales Person: DUNNING, DUSTIN	Srvc Supervisor: BROST, ROBERT	MBU ID Emp #:	394382

Job Personnel

HES Emp Name	Exp Hrs	Emp #	HES Emp Name	Exp Hrs	Emp #	HES Emp Name	Exp Hrs	Emp #
BROST, ROBERT W	13	394382	BROWN, TRAVIS A	13	396848	CREECH, STEVEN Michael	13	420183
lunceford, steven	13	457512	ross, chuck	13	453128			

Equipment

HES Unit #	Distance-1 way	HES Unit #	Distance-1 way	HES Unit #	Distance-1 way	HES Unit #	Distance-1 way
10025014	120 mile	10025121	120 mile	10243540C	120 mile	10296148C	120 mile
10829469	120 mile	10988978	120 mile				

Job Hours

Date	On Location Hours	Operating Hours	Date	On Location Hours	Operating Hours	Date	On Location Hours	Operating Hours
3/7/09	9	4						
TOTAL			Total is the sum of each column separately					

Job

Formation Name	Top	Bottom	Called Out	Date	Time	Time Zone
Formation Depth (MD)			On Location	07 - Mar - 2009	09:00	MST
Form Type		BHST	Job Started	07 - Mar - 2009	13:00	MST
Job depth MD	1425. ft	Job Depth TVD	Job Completed	07 - Mar - 2009	18:22	MST
Water Depth		Wk Ht Above Floor	Departed Loc	07 - Mar - 2009	20:30	MST
Perforation Depth (MD)	From	To			22:00	MST

Well Data

Description	New / Used	Max pressure psig	Size in	ID in	Weight lbm/ft	Thread	Grade	Top MD ft	Bottom MD ft	Top TVD ft	Bottom TVD ft
-------------	------------	-------------------	---------	-------	---------------	--------	-------	-----------	--------------	------------	---------------

Sales/Rental/3rd Party (HES)

Description	Qty	Qty uom	Depth	Supplier
PLUG,CMTG, TOP, 8 5/8, HWE, 7.20 MIN/8.09 MA	1	EA		
ADC (AUTO DENSITY CTRL) SYS, /JOB, ZI	1	JOB		
PORT. DAS W/CEMWIN; ACQUIRE W/HES, ZI	1	JOB		

Tools and Accessories

Type	Size	Qty	Make	Depth	Type	Size	Qty	Make	Depth	Type	Size	Qty	Make
Guide Shoe					Packer					Top Plug	8.625	1	
Float Shoe					Bridge Plug					Bottom Plug			
Float Collar					Retainer					SSR plug set			
Insert Float										Plug Container	8.625	1	
Stage Tool										Centralizers			

Miscellaneous Materials

Gelling Agt	Conc	Surfactant	Conc	Acid Type	Qty	Conc %
Treatment Fld	Conc	Inhibitor	Conc	Sand Type	Size	Qty

Fluid Data									
Stage/Plug #: 1									
Fluid #	Stage Type	Fluid Name	Qty	Qty uom	Mixing Density lbm/gal	Yield ft ³ /sk	Mix Fluid Gal/sk	Rate bbl/min	Total Mix Fluid Gal/sk
1	DYE SPACER		30.00	bbl	.	.0	.0	4	
2	Lead Cement	VERSACEM (TM) SYSTEM (452010)	210.0	sacks	12.3	2.38	13.75	6	
	2 %	CAL-SEAL 60, 50 LB BAG (101217146)							
	2 %	ECONOLITE (100001580)							
	0.3 %	VERSASET, 55 LB SK (101376573)							
	5.64 lbm	SALT, 100 LB BAG (100003652)							
	0.125 lbm	POLY-E-FLAKE (101216940)							
	0.25 %	D-AIR 3000 (101007446)							
	13.75 Gal	FRESH WATER							
3	Tail Cement	VERSACEM (TM) SYSTEM (452010)	130.0	sacks	12.8	2.11	11.75	6	
	2 %	CAL-SEAL 60, 50 LB BAG (101217146)							
	2 %	ECONOLITE (100001580)							
	0.3 %	VERSASET, 55 LB SK (101376573)							
	5.64 lbm	SALT, 100 LB BAG (100003652)							
	11.75 Gal	FRESH WATER							
4	DISPLACEMENT		87	bbl	8.33	.0	.0	8	
Calculated Values		Pressures		Volumes					
Displacement	87	Shut In: Instant		Lost Returns	no	Cement Slurry	138	Pad	
Top Of Cement	surface	5 Min		Cement Returns	27	Actual Displacement	87	Treatment	
Frac Gradient		15 Min		Spacers	30	Load and Breakdown		Total Job	
Rates									
Circulating	rig	Mixing	6	Displacement	8	Avg. Job	6		
Cement Left In Pipe	Amount	46.5 ft	Reason	Shoe Joint					
Frac Ring # 1 @	ID	Frac ring # 2 @	ID	Frac Ring # 3 @	ID	Frac Ring # 4 @	ID		
The Information Stated Herein Is Correct				Customer Representative Signature					

The Road to Excellence Starts with Safety

Sold To #: 338668	Ship To #: 2695484	Quote #:	Sales Order #: 6547748
Customer: CHEVRON - MID-CONTINENT EBIZ		Customer Rep:	
Well Name: SKR	Well #: 598-36-BV-10	API/UWI #:	
Field: PICEANCE	City (SAP): PARACHUTE	County/Parish: Garfield	State: Colorado
Legal Description:			
Lat:		Long:	
Contractor: H&P 316		Rig/Platform Name/Num: H&P 316	
Job Purpose: Cement Surface Casing		Ticket Amount:	
Well Type: Development Well		Job Type: Cement Surface Casing	
Sales Person: DUNNING, DUSTIN		Srvc Supervisor: BROST, ROBERT	
		MBU ID Emp #: 394382	

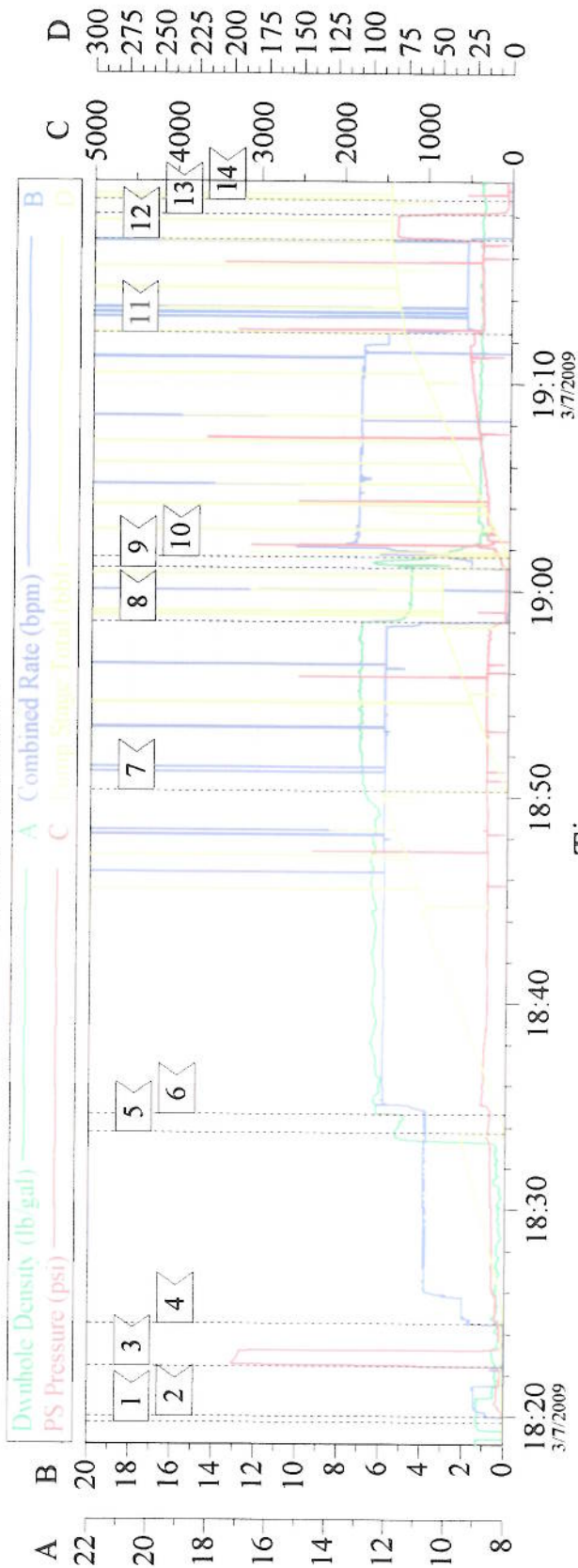
Activity Description	Date/Time	Cht #	Rate bbl/ min	Volume bbl		Pressure psig		Comments
				Stage	Total	Tubing	Casing	
Call Out	03/07/2009 09:00							elite#1 surface 1425td 1408tp 46.5shoe 9ppg mud 12 1/4"hole
Safety Huddle	03/07/2009 10:00							no cell phones use seatbelts watch following distance
Arrive At Loc	03/07/2009 13:00							
Assessment Of Location Safety Meeting	03/07/2009 15:00							walk threw rig up looking for haz
Rig-Up Equipment	03/07/2009 15:20							
Rig-Up Completed	03/07/2009 16:15							rig td at 1730 start ciculation
Safety Meeting - Pre Job	03/07/2009 18:10							attn by rig crew pump crew comp rep
Start Job	03/07/2009 18:22		2	2			65.0	fill lines fresh water
Pressure Test	03/07/2009 18:25						3275. 0	good test no leaks
Pump Spacer 1	03/07/2009 18:27		4	50			159.0	red dye pollyflake
Pump Lead Cement	03/07/2009 18:34		6	89			364.0	210sks 12.3ppg 2.38yield 13.75h2o down hole denso wouldnt hold dens had to recalibrate on the fly
Pump Tail Cement	03/07/2009 18:53		6	49			305.0	160sks 12.8ppg 2.11yield 11.75h2o
Shutdown	03/07/2009 19:01							
Drop Top Plug	03/07/2009 19:03							plug left container
Pump Displacement	03/07/2009 19:04		8	87			505.0	fresh water slow to 2 bls min last 10 bls

Cementing Job Log

Activity Description	Date/Time	Cht #	Rate bbl/ min	Volume bbl		Pressure psig		Comments
				Stage	Total	Tubing	Casing	
Bump Plug	03/07/2009 19:19		2				374.0	took 500 over
Check Floats	03/07/2009 19:21						1395. 0	floats held
End Job	03/07/2009 19:22							cmt to suface 27bls
Pump Cement	03/07/2009 20:05		1	12				top out 30sks 12.8ppg 2.11yield 11.75h2o well #14
Safety Meeting - Pre Rig- Down	03/07/2009 21:00							good circulation during job
Safety Meeting - Departing Location	03/07/2009 22:00							thank you Robert Brost and crew

Chevron

8 5/8" surface



Event Log

1	start job	18:19:43	2	fill lines	18:20:01	3	test lines	18:22:25
4	pump spcr	18:24:28	5	pump lead cmt	18:33:44	6	recalibrate down hole	18:34:38
7	pump tail cmt	18:50:17	8	shut down	18:58:27	9	drop plug	19:01:05
10	pump disp	19:01:37	11	slow rate	19:12:25	12	bump plug	19:16:53
13	check floats	19:18:05	14	end job	19:18:48			

Customer: chevron
Well Description: surface
LEASE SKR

Job Date: 3/7/09
CEMENTER Robert Brost
WELL # 598-36-pov-10

Ticket #: 6547748
ADC USED YES
CO REP Ronald M.

CemWin v1.7.2
07-Mar-09 20:46