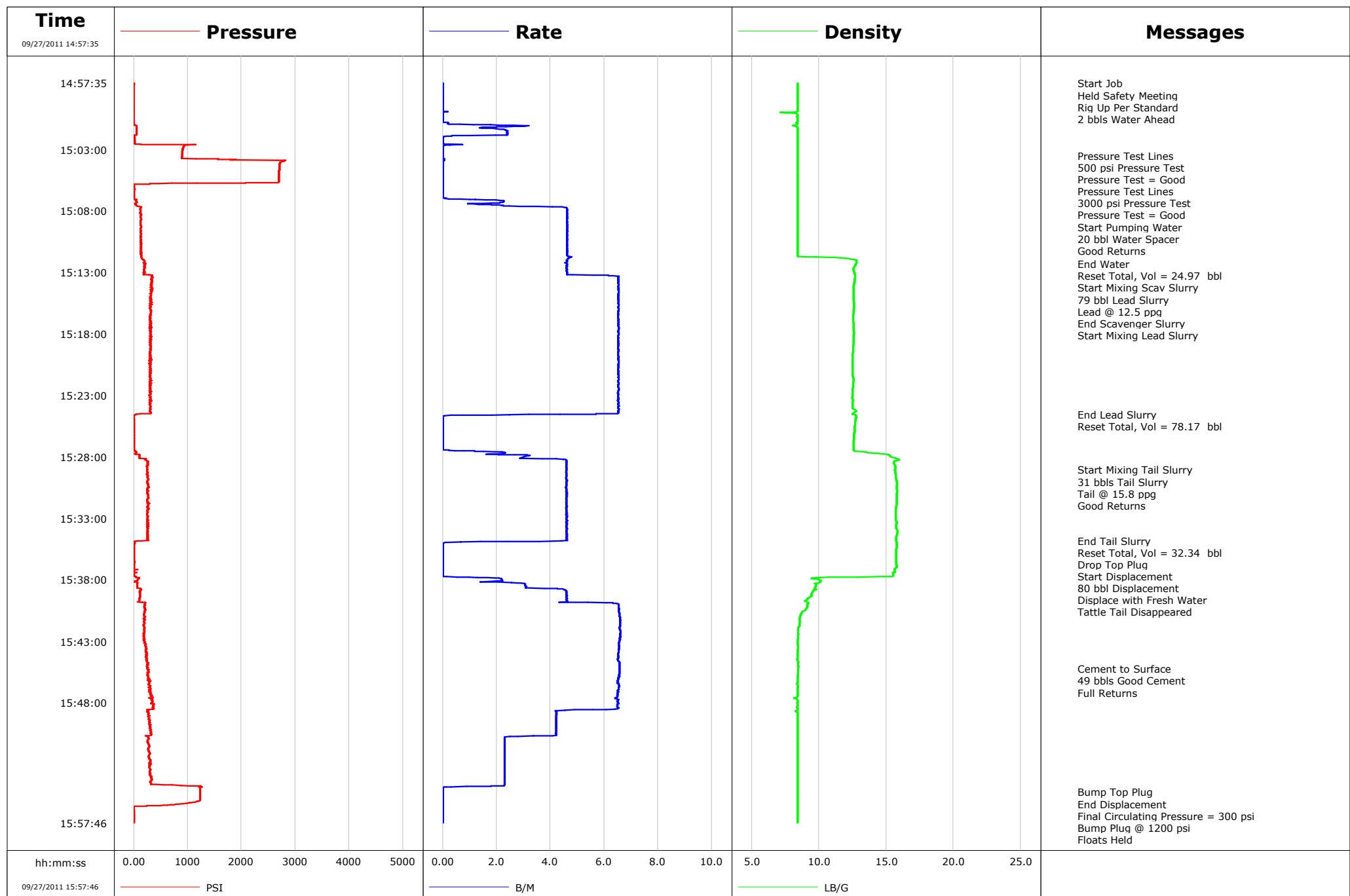


**Well** Federal 29-4C  
**Field** Parachute  
**Engineer** Ryan Bowditch  
**Country** United States

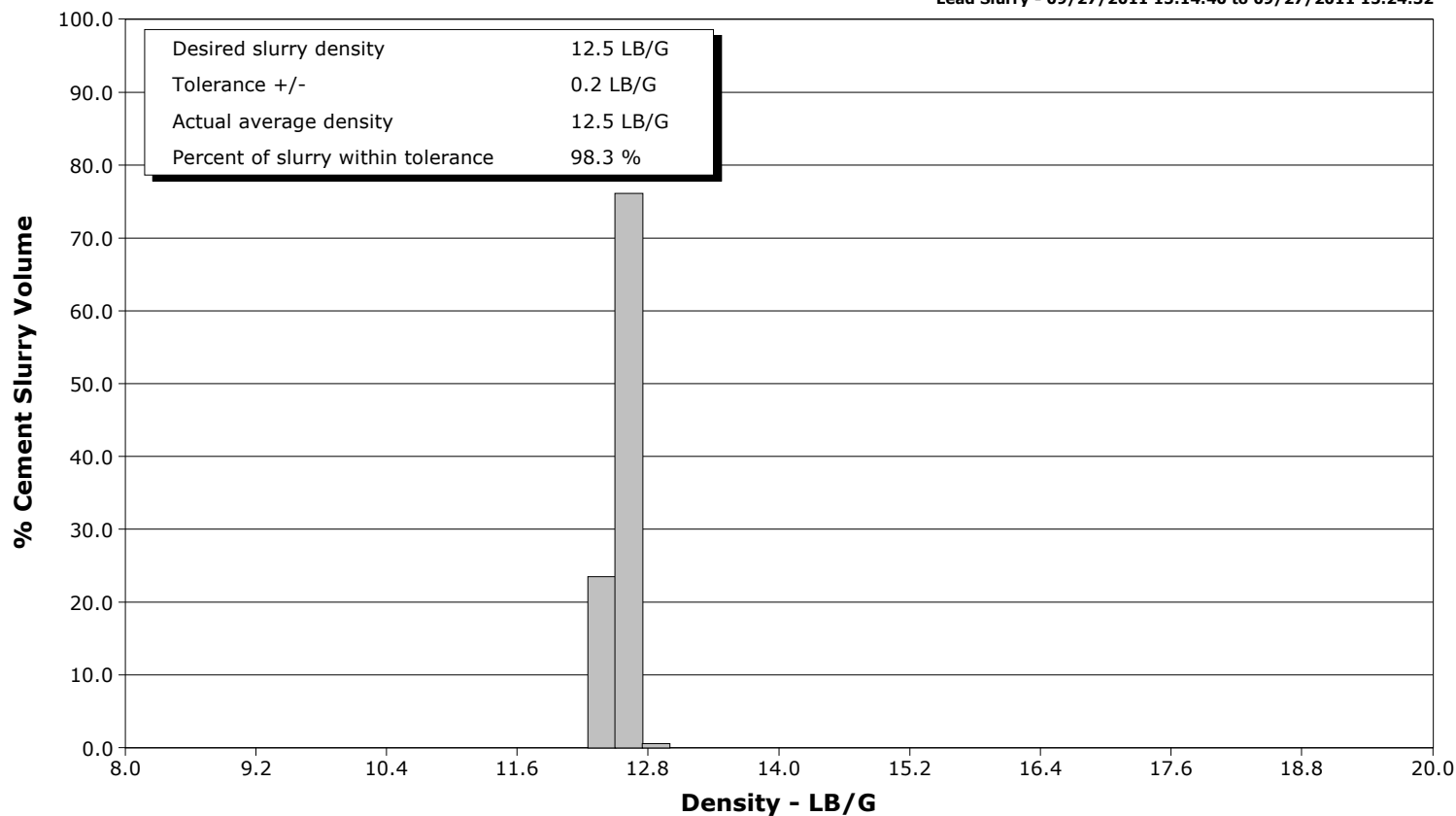
**Client** EnCana  
**SIR No.** BUNM-00194  
**Job Type** 9 5/8" Surface Casing  
**Job Date** 09-27-2011



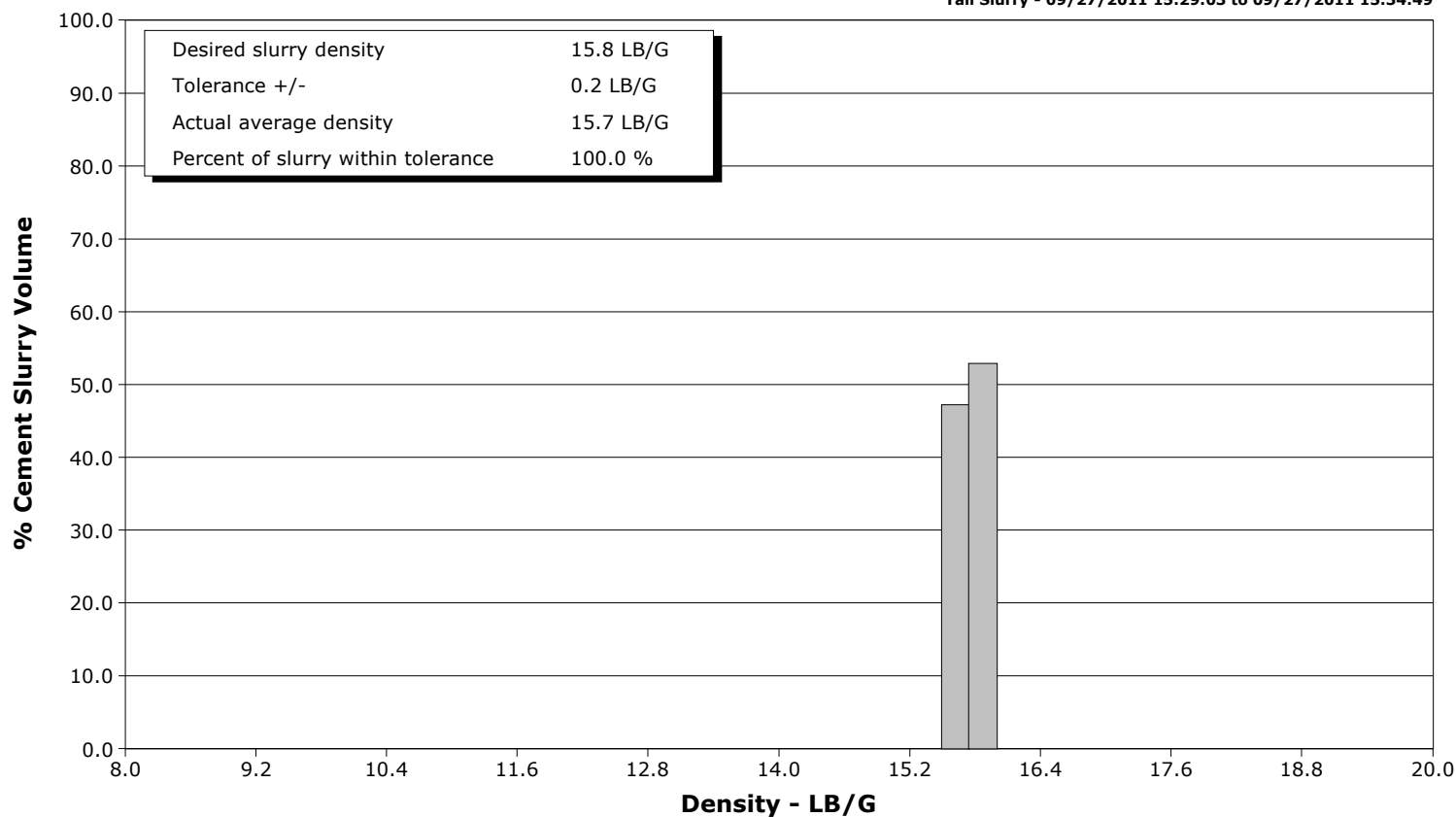
**Well** Federal 29-4C  
**Field** Parachute  
**Engineer** Ryan Bowditch  
**Country** United States

**Client** EnCana  
**SIR No.** BUNM-00194  
**Job Type** 9 5/8" Surface Casing  
**Job Date** 09-27-2011

**Lead Slurry - 09/27/2011 15:14:40 to 09/27/2011 15:24:32**



**Tail Slurry - 09/27/2011 15:29:03 to 09/27/2011 15:34:49**



# Cementing Service Report

					Customer EnCana			Job Number BUNM-00194	
Well Federal 29-4C			Location (legal) PA30		Schlumberger Location Grand Junction, CO			Job Start Sep/27/2011	
Field Parachute		Formation Name/Type Shale		Deviation 0 deg	Bit Size 12.8 in		Well MD 1083.0 ft		Well TVD 1083.0 ft
County Garfield		State/Province Colorado		BHP psi	BHST 90 degF		BHCT 81 degF		Pore Press. Gradient lb/gal
Well Master 0631289089		API/UWI 05045207840000							
Rig Name Nabors M13	Drilled For Gas		Service Via Land		Casing/Liner				
					Depth, ft	Size, in	Weight, lb/ft	Grade	Thread
Offshore Zone	Well Class New		Well Type Development		40.0	16.0	65.0		
					1083.0	9.6	36.0	K-55	8RD
Drilling Fluid Type		Max. Density lb/gal	Plastic Viscosity cP		Tubing/Drill Pipe				
					T/D	Depth, ft	Size, in	Weight, lb/ft	Grade
Service Line Cementing	Job Type 9 5/8" Surface Casing								
Max. Allowed Tub. Press 1500 psi	Max. Allowed Ann. Press 500 psi		WH Connection Single Cement head		Perforations/Open Hole				
					Top, ft	Bottom, ft	shot/ft	No. of Shots	Total Interval ft
					ft	ft			
					ft	ft			Diameter in
					ft	ft			
					Treat Down Casing	Displacement 80.1 bbl	Packer Type		Packer Depth ft
					Tubing Vol. bbl	Casing Vol. 83.7 bbl	Annular Vol. 64.0 bbl		Openhole Vol. 151.0 bbl
Casing/Tubing Secured <input checked="" type="checkbox"/>	1 Hole Vol. Circulated prior to Cement <input checked="" type="checkbox"/>				Casing Tools			Squeeze Job	
Lift Pressure 300 psi					Shoe Type Float			Squeeze Type	
Pipe Rotated <input type="checkbox"/>	Pipe Reciprocated <input type="checkbox"/>				Shoe Depth 1083.0 ft			Tool Type	
No. Centralizers	Top Plugs 1	Bottom Plugs			Stage Tool Type			Tool Depth ft	
Cement Head Type Single					Stage Tool Depth ft			Tail Pipe Size in	
Job Scheduled For Sep/27/2011	Arrived on Location Sep/27/2011		Leave Location Sep/27/2011		Collar Type Float			Tail Pipe Depth ft	
					Collar Depth 1037.0 ft			Sqz. Total Vol. bbl	
Date	Time 24-hr clock	Treating Pressure PSI	Flow Rate B/M	Density LB/G	Volume BBL	Solid Fraction NULL	Message		
09/27/2011	14:57:35	1	0.0	8.40	0.9	0	Started Acquisition		
09/27/2011	14:57:36	1	0.0	8.40	0.9	0	Held Safety Meeting		
09/27/2011	14:59:15	-2	0.0	8.40	0.9	0			
09/27/2011	15:00:55	-0	0.2	8.39	0.0	0			
09/27/2011	15:02:35	134	0.7	8.40	2.1	0			
09/27/2011	15:03:30	894	0.0	8.40	2.2	0	Pressure Test Lines		
09/27/2011	15:04:15	2705	0.0	8.40	2.2	0			
09/27/2011	15:04:30	2700	0.0	8.40	2.2	0	Pressure Test Lines		
09/27/2011	15:05:55	1	0.0	8.40	2.2	0			
09/27/2011	15:07:09	38	2.3	8.40	2.4	0	Start Pumping Water		
09/27/2011	15:07:10	41	2.3	8.40	2.4	0	20 bbl Water Spacer		
09/27/2011	15:07:35	63	2.2	8.40	3.2	0			
09/27/2011	15:09:15	131	4.6	8.40	10.7	0			
09/27/2011	15:10:32	124	4.6	8.40	16.7	0	Good Returns		
09/27/2011	15:10:55	131	4.6	8.40	18.4	0			
09/27/2011	15:12:17	214	4.6	12.76	24.8	29	End Water		
09/27/2011	15:12:19	191	4.6	12.74	24.9	29	Reset Total, Vol = 24.97 bbl		
09/27/2011	15:12:29	193	4.6	12.66	25.7	29	Start Mixing Scav Slurry		
09/27/2011	15:12:30	190	4.6	12.66	25.8	29	79 bbl Lead Slurry		
09/27/2011	15:12:35	196	4.6	12.60	26.2	29			
09/27/2011	15:14:15	335	6.5	12.56	35.8	29			

Well Federal 29-4C			Field Parachute		Job Start Sep/27/2011		Customer EnCana		Job Number BUNM-00194
Date	Time 24-hr clock	Treating Pressure PSI	Flow Rate B/M	Density LB/G	Volume BBL	Solid Fraction NULL	Message		
09/27/2011	15:14:40	323	6.5	12.56	38.5	29	Start Mixing Lead Slurry		
09/27/2011	15:15:55	303	6.5	12.59	46.6	30			
09/27/2011	15:17:35	290	6.5	12.59	57.5	27			
09/27/2011	15:19:15	316	6.5	12.53	68.4	29			
09/27/2011	15:20:55	290	6.5	12.49	79.2	30			
09/27/2011	15:22:35	298	6.5	12.50	90.1	32			
09/27/2011	15:24:15	307	6.5	12.75	101.0	26			
09/27/2011	15:24:32	45	4.4	12.52	102.8	26	End Lead Slurry		
09/27/2011	15:24:43	-2	0.0	12.76	103.1	0	Reset Total, Vol = 78.17 bbl		
09/27/2011	15:25:55	1	0.0	12.63	103.1	0			
09/27/2011	15:27:35	43	1.9	13.33	103.2	0			
09/27/2011	15:29:03	252	4.6	15.64	108.8	0	Start Mixing Tail Slurry		
09/27/2011	15:29:05	242	4.6	15.64	108.9	0	31 bbls Tail Slurry		
09/27/2011	15:29:15	263	4.6	15.65	109.7	0			
09/27/2011	15:29:20	256	4.6	15.67	110.1	0	Good Returns		
09/27/2011	15:30:55	248	4.6	15.81	117.3	0			
09/27/2011	15:32:35	249	4.6	15.70	125.0	0			
09/27/2011	15:34:15	249	4.6	15.80	132.7	38			
09/27/2011	15:34:49	256	4.6	15.73	135.3	72	End Tail Slurry		
09/27/2011	15:34:51	58	4.4	15.73	135.4	72	Reset Total, Vol = 32.34 bbl		
09/27/2011	15:34:52	18	3.6	15.72	135.5	73	Drop Top Plug		
09/27/2011	15:34:53	18	2.4	15.73	135.6	73	Start Displacement		
09/27/2011	15:34:55	9	0.7	15.76	135.7	74	80 bbl Displacement		
09/27/2011	15:35:55	8	0.0	15.74	135.7	0			
09/27/2011	15:37:35	5	0.0	15.52	135.7	0			
09/27/2011	15:39:15	114	4.6	9.43	140.5	74			
09/27/2011	15:40:33	200	6.5	8.86	147.7	10	Tattle Tail Disappeared		
09/27/2011	15:40:55	190	6.6	8.62	150.1	10			
09/27/2011	15:42:35	187	6.6	8.44	161.1	2			
09/27/2011	15:44:15	225	6.5	8.41	172.0	24			
09/27/2011	15:45:13	243	6.6	8.46	178.4	24	Cement to Surface		
09/27/2011	15:45:30	281	6.6	8.45	180.2	24	Full Returns		
09/27/2011	15:45:55	276	6.6	8.40	182.9	24			
09/27/2011	15:47:35	350	6.4	8.22	193.8	0			
09/27/2011	15:49:15	298	4.2	8.40	203.1	0			
09/27/2011	15:50:55	282	2.3	8.40	209.8	0			
09/27/2011	15:52:35	299	2.3	8.40	213.6	0			
09/27/2011	15:54:15	329	2.3	8.40	217.4	0			
09/27/2011	15:55:15	1229	0.0	8.40	218.8	0	Bump Top Plug		
09/27/2011	15:55:17	1228	0.0	8.40	218.8	0	Final Circulating Pressure = 300 psi		
09/27/2011	15:55:55	1227	0.0	8.40	218.8	0			
09/27/2011	15:56:31	-3	0.0	8.40	218.8	0	Floats Held		

<b>Well</b> Federal 29-4C	<b>Field</b> Parachute	<b>Job Start</b> Sep/27/2011	<b>Customer</b> EnCana	<b>Job Number</b> BUNM-00194
------------------------------	---------------------------	---------------------------------	---------------------------	---------------------------------

**Post Job Summary**

Average Pump Rates, bbl/min					Volume of Fluid Injected, bbl			
Slurry 4.0	N2	Mud	Maximum Rate 6.6	Total Slurry 110.0	Mud 0.0	Spacer 20.0	N2	
Treating Pressure Summary, psi					Breakdown Fluid			
Maximum 2814	Final 2	Average 330	Bump Plug to 1250	Breakdown	Type	Volume bbl	Density lb/gal	
Avg. N2 Percent %	Designed Slurry Volume 110.0 bbl	Displacement 81.0 bbl	Mix Water Temp 65 degF	Cement Circulated to Surface? <input checked="" type="checkbox"/>		Volume 49.0 bbl		
				Washed Thru Perfs <input type="checkbox"/>		To ft		
Customer or Authorized Representative			Schlumberger Supervisor		Circulation Lost <input type="checkbox"/>	Job Completed <input checked="" type="checkbox"/>		
Charlie Brown			Ryan Bowditch		-		-	