

ANADARKO E&P COMPANY LP

Location: COLORADO Slot: SLOT#06 CAMP 24N-30HZ (460'FSL & 1319'FEL, SEC.31)
Field: WELD COUNTY (KERR MCGEE) Well: CAMP 24N-30HZ
Facility: SEC.31-T3N-R65W Wellbore: CAMP 24N-30HZ PWB

Plot reference wellpath is CAMP 24N-30HZ (PERMIT) PWP

True vertical depths are referenced to XTREME 6 (RKB)	Grid System: NAD83 / Lambert Colorado SP, Northern Zone (501), US feet
Measured depths are referenced to XTREME 6 (RKB)	North Reference: True north
XTREME 6 (RKB) to Mean Sea Level: 4974 feet	Scale: True distance
Mean Sea Level to Mud line (At Slot: SLOT#06 CAMP 24N-30HZ (460'FSL & 1319'FEL, SEC.31)): 0 feet	Depths are in feet
Coordinates are in feet referenced to Slot	Created by: wilsje02 on 1/31/2012

Location Information

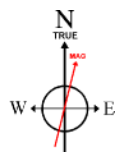
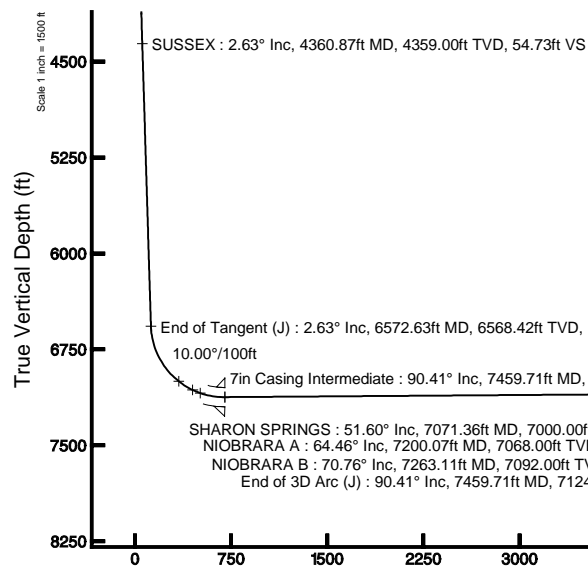
Facility Name				Grid East (US ft)	Grid North (US ft)	Latitude	Longitude
SEC.31-T3N-R65W				3220398.633	1307925.729	40°10'33.460"N	104°42'40.493"W
Slot	Local N (ft)	Local E (ft)	Grid East (US ft)	Grid North (US ft)	Latitude	Longitude	
SLOT#06 CAMP 24N-30HZ (460'FSL & 1319'FEL, SEC.31)	-6.13	2703.92	3223102.384	1307943.653	40°10'33.398"N	104°42'05.659"W	
XTREME 6 (RKB) to Mud line (At Slot: SLOT#06 CAMP 24N-30HZ (460'FSL & 1319'FEL, SEC.31))							4974ft
Mean Sea Level to Mud line (At Slot: SLOT#06 CAMP 24N-30HZ (460'FSL & 1319'FEL, SEC.31))							0ft
XTREME 6 (RKB) to Mean Sea Level							4974ft

Well Profile Data

Design Comment	MD (ft)	Inc (°)	Az (°)	TVD (ft)	Local N (ft)	Local E (ft)	DLS (°/100ft)	VS (ft)
Tie On	25.00	0.000	50.000	25.00	0.00	0.00	0.00	0.00
End of Tangent	2500.00	0.000	50.000	2500.00	0.00	0.00	0.00	0.00
End of Build (J)	2631.75	2.635	50.000	2631.70	1.95	2.32	2.00	2.01
End of Tangent (J)	6572.63	2.635	50.000	6568.42	118.40	141.11	0.00	122.17
End of 3D Arc (J)	7459.71	90.410	0.232	7124.00	695.12	163.10	10.00	699.27
End of Tangent (J)	13749.54	90.410	0.232	7079.00	6984.74	188.57	0.00	6987.28

Targets

Name	MD (ft)	TVD (ft)	Local N (ft)	Local E (ft)	Grid East (US ft)	Grid North (US ft)	Latitude	Longitude
CAMP 5 PAD SECTION 30		0.00	0.00	0.00	3223102.38	1307943.65	40°10'33.398"N	104°42'05.659"W
CAMP 5 PAD SECTION 31		0.00	0.00	0.00	3223102.38	1307943.65	40°10'33.398"N	104°42'05.659"W
CAMP 24N-30HZ BHL ON PLAT (2159'FSL & 1160'FEL, SEC.30) REV-1	13749.54	7079.00	6984.74	188.57	3223228.05	1314929.49	40°11'42.421"N	104°42'03.229"W
CAMP 5 PAD SEC. 30 HARDLINES (460' SETBACKS)	7400.00	0.00	0.00	0.00	3223102.38	1307943.65	40°10'33.398"N	104°42'05.659"W
CAMP 5 PAD SEC. 31 HARDLINES (460' SETBACKS)	7400.00	0.00	0.00	0.00	3223102.38	1307943.65	40°10'33.398"N	104°42'05.659"W

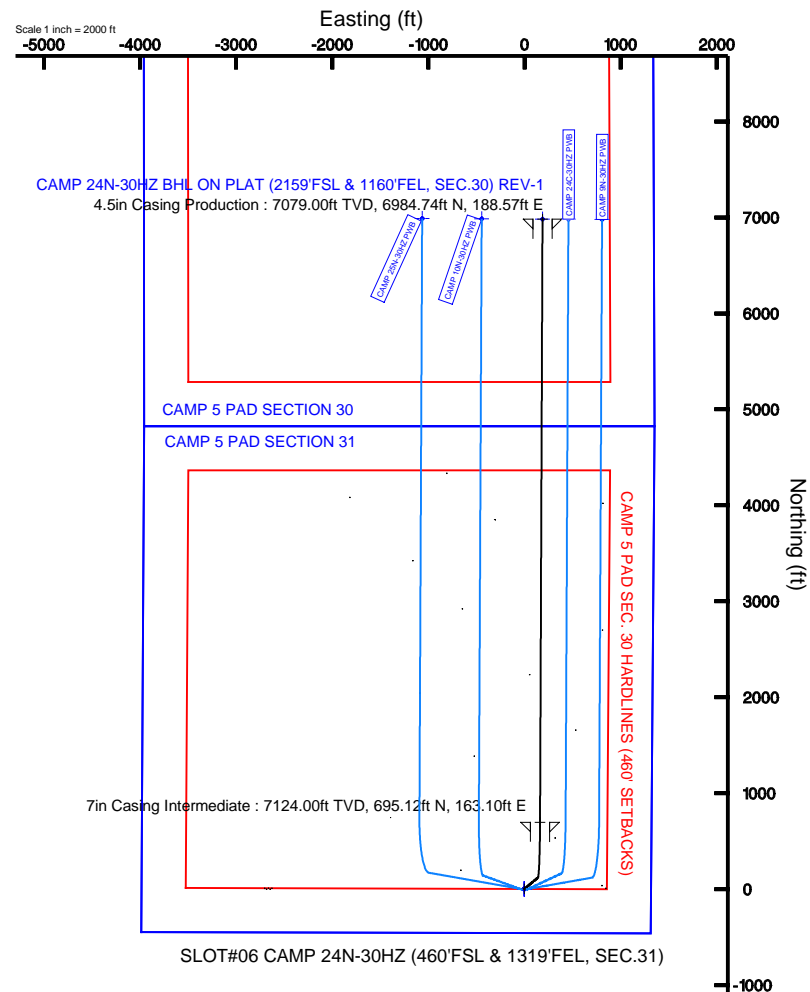


BGGM (1945.0 to 2013.0) Dip: 66.84° Field: 52948.3 nT
Magnetic North is 8.72 degrees East of True North (at 1/30/2012)

To correct azimuth from Magnetic to True add 8.72 degrees
For example: if the Magnetic North Azimuth = 90 degs, then the True North Azimuth = 90 + 8.72 = 98.72

Vertical Section (ft)

Azimuth 1.55° with reference 0.00 N, 0.00 E





Planned Wellpath Report

CAMP 24N-30HZ (PERMIT) PWP

Page 1 of 6



REFERENCE WELLPATH IDENTIFICATION

Operator	ANADARKO E&P COMPANY LP	Slot	SLOT#06 CAMP 24N-30HZ (460'FSL & 1319'FEL, SEC.31)
Area	COLORADO	Well	CAMP 24N-30HZ
Field	WELD COUNTY (KERR MCGEE)	Wellbore	CAMP 24N-30HZ PWB
Facility	SEC.31-T3N-R65W		

REPORT SETUP INFORMATION

Projection System	NAD83 / Lambert Colorado SP, Northern Zone (501), US feet	Software System	WellArchitect® 3.0.2
North Reference	True	User	Wilsjef02
Scale	0.999958	Report Generated	1/31/2012 at 1:34:51 PM
Convergence at slot	0.52° East	Database/Source file	WellArchitectDB/CAMP_24N-30HZ_PWB.xml

WELLPATH LOCATION

	Local coordinates		Grid coordinates		Geographic coordinates	
	North[ft]	East[ft]	Easting[US ft]	Northing[US ft]	Latitude	Longitude
Slot Location	-6.13	2703.92	3223102.38	1307943.65	40°10'33.398"N	104°42'05.659"W
Facility Reference Pt			3220398.63	1307925.73	40°10'33.460"N	104°42'40.493"W
Field Reference Pt			3197771.84	1268891.29	40°04'09.600"N	104°47'36.000"W

WELLPATH DATUM

Calculation method	Minimum curvature	XTREME 6 (RKB) to Facility Vertical Datum	4974.00ft
Horizontal Reference Pt	Slot	XTREME 6 (RKB) to Mean Sea Level	4974.00ft
Vertical Reference Pt	XTREME 6 (RKB)	XTREME 6 (RKB) to Mud Line at Slot (SLOT#06 CAMP 24N-30HZ (460'FSL & 1319'FEL, SEC.31))	4974.00ft
MD Reference Pt	XTREME 6 (RKB)	Section Origin	N 0.00, E 0.00 ft
Field Vertical Reference	Mean Sea Level	Section Azimuth	1.55°



Planned Wellpath Report

CAMP 24N-30HZ (PERMIT) PWP

Page 2 of 6



REFERENCE WELLPATH IDENTIFICATION			
Operator	ANADARKO E&P COMPANY LP	Slot	SLOT#06 CAMP 24N-30HZ (460'FSL & 1319'FEL, SEC.31)
Area	COLORADO	Well	CAMP 24N-30HZ
Field	WELD COUNTY (KERR MCGEE)	Wellbore	CAMP 24N-30HZ PWB
Facility	SEC.31-T3N-R65W		

WELLPATH DATA (149 stations) † = interpolated/extrapolated station										
MD [ft]	Inclination [°]	Azimuth [°]	TVD [ft]	Vert Sect [ft]	North [ft]	East [ft]	Latitude	Longitude	DLS [°/100ft]	Comments
0.00†	0.000	50.000	0.00	0.00	0.00	0.00	40°10'33.398"N	104°42'05.659"W	0.00	Tie On
25.00	0.000	50.000	25.00	0.00	0.00	0.00	40°10'33.398"N	104°42'05.659"W	0.00	
125.00†	0.000	50.000	125.00	0.00	0.00	0.00	40°10'33.398"N	104°42'05.659"W	0.00	
225.00†	0.000	50.000	225.00	0.00	0.00	0.00	40°10'33.398"N	104°42'05.659"W	0.00	
325.00†	0.000	50.000	325.00	0.00	0.00	0.00	40°10'33.398"N	104°42'05.659"W	0.00	
425.00†	0.000	50.000	425.00	0.00	0.00	0.00	40°10'33.398"N	104°42'05.659"W	0.00	
525.00†	0.000	50.000	525.00	0.00	0.00	0.00	40°10'33.398"N	104°42'05.659"W	0.00	
625.00†	0.000	50.000	625.00	0.00	0.00	0.00	40°10'33.398"N	104°42'05.659"W	0.00	
725.00†	0.000	50.000	725.00	0.00	0.00	0.00	40°10'33.398"N	104°42'05.659"W	0.00	
825.00†	0.000	50.000	825.00	0.00	0.00	0.00	40°10'33.398"N	104°42'05.659"W	0.00	
925.00†	0.000	50.000	925.00	0.00	0.00	0.00	40°10'33.398"N	104°42'05.659"W	0.00	
1025.00†	0.000	50.000	1025.00	0.00	0.00	0.00	40°10'33.398"N	104°42'05.659"W	0.00	
1125.00†	0.000	50.000	1125.00	0.00	0.00	0.00	40°10'33.398"N	104°42'05.659"W	0.00	
1225.00†	0.000	50.000	1225.00	0.00	0.00	0.00	40°10'33.398"N	104°42'05.659"W	0.00	
1325.00†	0.000	50.000	1325.00	0.00	0.00	0.00	40°10'33.398"N	104°42'05.659"W	0.00	
1425.00†	0.000	50.000	1425.00	0.00	0.00	0.00	40°10'33.398"N	104°42'05.659"W	0.00	
1525.00†	0.000	50.000	1525.00	0.00	0.00	0.00	40°10'33.398"N	104°42'05.659"W	0.00	
1625.00†	0.000	50.000	1625.00	0.00	0.00	0.00	40°10'33.398"N	104°42'05.659"W	0.00	
1725.00†	0.000	50.000	1725.00	0.00	0.00	0.00	40°10'33.398"N	104°42'05.659"W	0.00	
1825.00†	0.000	50.000	1825.00	0.00	0.00	0.00	40°10'33.398"N	104°42'05.659"W	0.00	
1925.00†	0.000	50.000	1925.00	0.00	0.00	0.00	40°10'33.398"N	104°42'05.659"W	0.00	
2025.00†	0.000	50.000	2025.00	0.00	0.00	0.00	40°10'33.398"N	104°42'05.659"W	0.00	
2125.00†	0.000	50.000	2125.00	0.00	0.00	0.00	40°10'33.398"N	104°42'05.659"W	0.00	
2225.00†	0.000	50.000	2225.00	0.00	0.00	0.00	40°10'33.398"N	104°42'05.659"W	0.00	
2325.00†	0.000	50.000	2325.00	0.00	0.00	0.00	40°10'33.398"N	104°42'05.659"W	0.00	
2425.00†	0.000	50.000	2425.00	0.00	0.00	0.00	40°10'33.398"N	104°42'05.659"W	0.00	
2500.00	0.000	50.000	2500.00	0.00	0.00	0.00	40°10'33.398"N	104°42'05.659"W	0.00	
2525.00†	0.500	50.000	2525.00	0.07	0.07	0.08	40°10'33.399"N	104°42'05.658"W	2.00	
2625.00†	2.500	50.000	2624.96	1.81	1.75	2.09	40°10'33.415"N	104°42'05.632"W	2.00	
2631.75	2.635	50.000	2631.70	2.01	1.95	2.32	40°10'33.417"N	104°42'05.629"W	2.00	
2725.00†	2.635	50.000	2724.85	4.85	4.70	5.60	40°10'33.444"N	104°42'05.587"W	0.00	End of Build (J)
2825.00†	2.635	50.000	2824.75	7.90	7.66	9.13	40°10'33.474"N	104°42'05.541"W	0.00	
2925.00†	2.635	50.000	2924.64	10.95	10.61	12.65	40°10'33.503"N	104°42'05.496"W	0.00	
3025.00†	2.635	50.000	3024.54	14.00	13.57	16.17	40°10'33.532"N	104°42'05.451"W	0.00	
3125.00†	2.635	50.000	3124.43	17.05	16.52	19.69	40°10'33.561"N	104°42'05.405"W	0.00	
3225.00†	2.635	50.000	3224.33	20.10	19.48	23.21	40°10'33.590"N	104°42'05.360"W	0.00	
3325.00†	2.635	50.000	3324.22	23.15	22.43	26.73	40°10'33.620"N	104°42'05.315"W	0.00	
3425.00†	2.635	50.000	3424.11	26.20	25.39	30.26	40°10'33.649"N	104°42'05.269"W	0.00	
3525.00†	2.635	50.000	3524.01	29.24	28.34	33.78	40°10'33.678"N	104°42'05.224"W	0.00	
3625.00†	2.635	50.000	3623.90	32.29	31.30	37.30	40°10'33.707"N	104°42'05.178"W	0.00	
3725.00†	2.635	50.000	3723.80	35.34	34.25	40.82	40°10'33.736"N	104°42'05.133"W	0.00	
3825.00†	2.635	50.000	3823.69	38.39	37.21	44.34	40°10'33.766"N	104°42'05.088"W	0.00	
3925.00†	2.635	50.000	3923.59	41.44	40.16	47.87	40°10'33.795"N	104°42'05.042"W	0.00	
3962.45†	2.635	50.000	3961.00	42.58	41.27	49.18	40°10'33.806"N	104°42'05.025"W	0.00	
4025.00†	2.635	50.000	4023.48	44.49	43.12	51.39	40°10'33.824"N	104°42'04.997"W	0.00	
4125.00†	2.635	50.000	4123.37	47.54	46.07	54.91	40°10'33.853"N	104°42'04.952"W	0.00	
4225.00†	2.635	50.000	4223.27	50.59	49.03	58.43	40°10'33.883"N	104°42'04.906"W	0.00	
4325.00†	2.635	50.000	4323.16	53.64	51.98	61.95	40°10'33.912"N	104°42'04.861"W	0.00	
4360.87†	2.635	50.000	4359.00	54.73	53.04	63.22	40°10'33.922"N	104°42'04.845"W	0.00	
4425.00†	2.635	50.000	4423.06	56.69	54.94	65.47	40°10'33.941"N	104°42'04.816"W	0.00	
4525.00†	2.635	50.000	4522.95	59.74	57.89	69.00	40°10'33.970"N	104°42'04.770"W	0.00	
4625.00†	2.635	50.000	4622.85	62.78	60.85	72.52	40°10'33.999"N	104°42'04.725"W	0.00	
4725.00†	2.635	50.000	4722.74	65.83	63.80	76.04	40°10'34.029"N	104°42'04.679"W	0.00	
4825.00†	2.635	50.000	4822.63	68.88	66.76	79.56	40°10'34.058"N	104°42'04.634"W	0.00	
4925.00†	2.635	50.000	4922.53	71.93	69.71	83.08	40°10'34.087"N	104°42'04.589"W	0.00	
5025.00†	2.635	50.000	5022.42	74.98	72.67	86.60	40°10'34.116"N	104°42'04.543"W	0.00	
5125.00†	2.635	50.000	5122.32	78.03	75.63	90.13	40°10'34.145"N	104°42'04.498"W	0.00	
5225.00†	2.635	50.000	5222.21	81.08	78.58	93.65	40°10'34.175"N	104°42'04.453"W	0.00	
5325.00†	2.635	50.000	5322.11	84.13	81.54	97.17	40°10'34.204"N	104°42'04.407"W	0.00	
5425.00†	2.635	50.000	5422.00	87.18	84.49	100.69	40°10'34.233"N	104°42'04.362"W	0.00	



Planned Wellpath Report

CAMP 24N-30HZ (PERMIT) PWP

Page 3 of 6



REFERENCE WELLPATH IDENTIFICATION

Operator	ANADARKO E&P COMPANY LP	Slot	SLOT#06 CAMP 24N-30HZ (460'FSL & 1319'FEL, SEC.31)
Area	COLORADO	Well	CAMP 24N-30HZ
Field	WELD COUNTY (KERR MCGEE)	Wellbore	CAMP 24N-30HZ PWB
Facility	SEC.31-T3N-R65W		

WELLPATH DATA (149 stations) † = interpolated/extrapolated station

MD [ft]	Inclination [°]	Azimuth [°]	TVD [ft]	Vert Sect [ft]	North [ft]	East [ft]	Latitude	Longitude	DLS [°/100ft]	Comments
5525.00†	2.635	50.000	5521.89	90.23	87.45	104.21	40°10'34.262"N	104°42'04.316"W	0.00	
5625.00†	2.635	50.000	5621.79	93.28	90.40	107.74	40°10'34.291"N	104°42'04.271"W	0.00	
5725.00†	2.635	50.000	5721.68	96.32	93.36	111.26	40°10'34.321"N	104°42'04.226"W	0.00	
5825.00†	2.635	50.000	5821.58	99.37	96.31	114.78	40°10'34.350"N	104°42'04.180"W	0.00	
5925.00†	2.635	50.000	5921.47	102.42	99.27	118.30	40°10'34.379"N	104°42'04.135"W	0.00	
6025.00†	2.635	50.000	6021.37	105.47	102.22	121.82	40°10'34.408"N	104°42'04.090"W	0.00	
6125.00†	2.635	50.000	6121.26	108.52	105.18	125.34	40°10'34.437"N	104°42'04.044"W	0.00	
6225.00†	2.635	50.000	6221.15	111.57	108.13	128.87	40°10'34.467"N	104°42'03.999"W	0.00	
6325.00†	2.635	50.000	6321.05	114.62	111.09	132.39	40°10'34.496"N	104°42'03.953"W	0.00	
6425.00†	2.635	50.000	6420.94	117.67	114.04	135.91	40°10'34.525"N	104°42'03.908"W	0.00	
6525.00†	2.635	50.000	6520.84	120.72	117.00	139.43	40°10'34.554"N	104°42'03.863"W	0.00	
6572.63	2.635	50.000	6568.42	122.17	118.40	141.11	40°10'34.568"N	104°42'03.841"W	0.00	End of Tangent (J)
6625.00†	7.223	16.337	6620.59	126.15	122.34	142.96	40°10'34.607"N	104°42'03.817"W	10.00	
6725.00†	17.055	6.821	6718.24	146.89	142.99	146.48	40°10'34.811"N	104°42'03.772"W	10.00	
6825.00†	27.008	4.198	6810.82	184.27	180.29	149.89	40°10'35.180"N	104°42'03.728"W	10.00	
6925.00†	36.986	2.920	6895.52	237.15	233.11	153.09	40°10'35.702"N	104°42'03.687"W	10.00	
7025.00†	46.972	2.125	6969.77	303.95	299.84	155.99	40°10'36.361"N	104°42'03.649"W	10.00	
7071.36†	51.603	1.842	7000.00	339.07	334.95	157.20	40°10'36.708"N	104°42'03.634"W	10.00	SHARON SPRINGS
7125.00†	56.962	1.555	7031.30	382.61	378.47	158.49	40°10'37.138"N	104°42'03.617"W	10.00	
7200.07†	64.463	1.208	7068.00	448.03	443.88	160.06	40°10'37.784"N	104°42'03.597"W	10.00	NIOBRARA A
7225.00†	66.954	1.103	7078.26	470.76	466.60	160.52	40°10'38.009"N	104°42'03.591"W	10.00	
7263.11†	70.762	0.949	7092.00	506.29	502.13	161.15	40°10'38.360"N	104°42'03.583"W	10.00	NIOBRARA B
7325.00†	76.947	0.713	7109.20	565.71	561.54	162.01	40°10'38.947"N	104°42'03.572"W	10.00	
7425.00†	86.941	0.354	7123.20	664.58	660.43	162.93	40°10'39.924"N	104°42'03.560"W	10.00	
7459.71	90.410	0.232	7124.00	699.27	695.12	163.10	40°10'40.267"N	104°42'03.558"W	10.00	End of 3D Arc (J)
7525.00†	90.410	0.232	7123.53	764.54	760.41	163.37	40°10'40.912"N	104°42'03.554"W	0.00	
7625.00†	90.410	0.232	7122.82	864.51	860.40	163.77	40°10'41.901"N	104°42'03.549"W	0.00	
7725.00†	90.410	0.232	7122.10	964.48	960.40	164.18	40°10'42.889"N	104°42'03.544"W	0.00	
7825.00†	90.410	0.232	7121.39	1064.45	1060.40	164.58	40°10'43.877"N	104°42'03.539"W	0.00	
7925.00†	90.410	0.232	7120.67	1164.42	1160.39	164.99	40°10'44.865"N	104°42'03.533"W	0.00	
8025.00†	90.410	0.232	7119.95	1264.40	1260.39	165.39	40°10'45.853"N	104°42'03.528"W	0.00	
8125.00†	90.410	0.232	7119.24	1364.37	1360.39	165.80	40°10'46.841"N	104°42'03.523"W	0.00	
8225.00†	90.410	0.232	7118.52	1464.34	1460.38	166.20	40°10'47.830"N	104°42'03.518"W	0.00	
8325.00†	90.410	0.232	7117.81	1564.31	1560.38	166.61	40°10'48.818"N	104°42'03.512"W	0.00	
8425.00†	90.410	0.232	7117.09	1664.28	1660.38	167.01	40°10'49.806"N	104°42'03.507"W	0.00	
8525.00†	90.410	0.232	7116.38	1764.25	1760.37	167.42	40°10'50.794"N	104°42'03.502"W	0.00	
8625.00†	90.410	0.232	7115.66	1864.22	1860.37	167.82	40°10'51.782"N	104°42'03.497"W	0.00	
8725.00†	90.410	0.232	7114.95	1964.19	1960.37	168.23	40°10'52.770"N	104°42'03.492"W	0.00	
8825.00†	90.410	0.232	7114.23	2064.16	2060.36	168.63	40°10'53.759"N	104°42'03.486"W	0.00	
8925.00†	90.410	0.232	7113.52	2164.14	2160.36	169.04	40°10'54.747"N	104°42'03.481"W	0.00	
9025.00†	90.410	0.232	7112.80	2264.11	2260.36	169.44	40°10'55.735"N	104°42'03.476"W	0.00	
9125.00†	90.410	0.232	7112.09	2364.08	2360.35	169.85	40°10'56.723"N	104°42'03.471"W	0.00	
9225.00†	90.410	0.232	7111.37	2464.05	2460.35	170.25	40°10'57.711"N	104°42'03.465"W	0.00	
9325.00†	90.410	0.232	7110.65	2564.02	2560.35	170.66	40°10'58.699"N	104°42'03.460"W	0.00	
9425.00†	90.410	0.232	7109.94	2663.99	2660.34	171.06	40°10'59.688"N	104°42'03.455"W	0.00	
9525.00†	90.410	0.232	7109.22	2763.96	2760.34	171.47	40°11'00.676"N	104°42'03.450"W	0.00	
9625.00†	90.410	0.232	7108.51	2863.93	2860.34	171.87	40°11'01.664"N	104°42'03.445"W	0.00	
9725.00†	90.410	0.232	7107.79	2963.90	2960.33	172.28	40°11'02.652"N	104°42'03.439"W	0.00	
9825.00†	90.410	0.232	7107.08	3063.88	3060.33	172.68	40°11'03.640"N	104°42'03.434"W	0.00	
9925.00†	90.410	0.232	7106.36	3163.85	3160.33	173.09	40°11'04.628"N	104°42'03.429"W	0.00	
10025.00†	90.410	0.232	7105.65	3263.82	3260.32	173.49	40°11'05.617"N	104°42'03.424"W	0.00	
10125.00†	90.410	0.232	7104.93	3363.79	3360.32	173.90	40°11'06.605"N	104°42'03.418"W	0.00	
10225.00†	90.410	0.232	7104.22	3463.76	3460.32	174.30	40°11'07.593"N	104°42'03.413"W	0.00	
10325.00†	90.410	0.232	7103.50	3563.73	3560.31	174.71	40°11'08.581"N	104°42'03.408"W	0.00	
10425.00†	90.410	0.232	7102.78	3663.70	3660.31	175.11	40°11'09.569"N	104°42'03.403"W	0.00	
10525.00†	90.410	0.232	7102.07	3763.67	3760.31	175.52	40°11'10.557"N	104°42'03.398"W	0.00	
10625.00†	90.410	0.232	7101.35	3863.65	3860.30	175.92	40°11'11.546"N	104°42'03.392"W	0.00	
10725.00†	90.410	0.232	7100.64	3963.62	3960.30	176.33	40°11'12.534"N	104°42'03.387"W	0.00	
10825.00†	90.410	0.232	7099.92	4063.59	4060.30	176.73	40°11'13.522"N	104°42'03.382"W	0.00	
10925.00†	90.410	0.232	7099.21	4163.56	4160.29	177.14	40°11'14.510"N	104°42'03.377"W	0.00	



Planned Wellpath Report

CAMP 24N-30HZ (PERMIT) PWP

Page 4 of 6



REFERENCE WELLPATH IDENTIFICATION

Operator	ANADARKO E&P COMPANY LP	Slot	SLOT#06 CAMP 24N-30HZ (460'FSL & 1319'FEL, SEC.31)
Area	COLORADO	Well	CAMP 24N-30HZ
Field	WELD COUNTY (KERR MCGEE)	Wellbore	CAMP 24N-30HZ PWB
Facility	SEC.31-T3N-R65W		

WELLPATH DATA (149 stations) † = interpolated/extrapolated station

MD [ft]	Inclination [°]	Azimuth [°]	TVD [ft]	Vert Sect [ft]	North [ft]	East [ft]	Latitude	Longitude	DLS [°/100ft]	Comments
11025.00†	90.410	0.232	7098.49	4263.53	4260.29	177.54	40°11'15.498"N	104°42'03.371"W	0.00	
11125.00†	90.410	0.232	7097.78	4363.50	4360.29	177.94	40°11'16.486"N	104°42'03.366"W	0.00	
11225.00†	90.410	0.232	7097.06	4463.47	4460.28	178.35	40°11'17.475"N	104°42'03.361"W	0.00	
11325.00†	90.410	0.232	7096.35	4563.44	4560.28	178.75	40°11'18.463"N	104°42'03.356"W	0.00	
11425.00†	90.410	0.232	7095.63	4663.41	4660.28	179.16	40°11'19.451"N	104°42'03.350"W	0.00	
11525.00†	90.410	0.232	7094.91	4763.39	4760.27	179.56	40°11'20.439"N	104°42'03.345"W	0.00	
11625.00†	90.410	0.232	7094.20	4863.36	4860.27	179.97	40°11'21.427"N	104°42'03.340"W	0.00	
11725.00†	90.410	0.232	7093.48	4963.33	4960.27	180.37	40°11'22.415"N	104°42'03.335"W	0.00	
11825.00†	90.410	0.232	7092.77	5063.30	5060.26	180.78	40°11'23.404"N	104°42'03.330"W	0.00	
11925.00†	90.410	0.232	7092.05	5163.27	5160.26	181.18	40°11'24.392"N	104°42'03.324"W	0.00	
12025.00†	90.410	0.232	7091.34	5263.24	5260.26	181.59	40°11'25.380"N	104°42'03.319"W	0.00	
12125.00†	90.410	0.232	7090.62	5363.21	5360.25	181.99	40°11'26.368"N	104°42'03.314"W	0.00	
12225.00†	90.410	0.232	7089.91	5463.18	5460.25	182.40	40°11'27.356"N	104°42'03.309"W	0.00	
12325.00†	90.410	0.232	7089.19	5563.15	5560.25	182.80	40°11'28.344"N	104°42'03.303"W	0.00	
12425.00†	90.410	0.232	7088.48	5663.13	5660.24	183.21	40°11'29.333"N	104°42'03.298"W	0.00	
12525.00†	90.410	0.232	7087.76	5763.10	5760.24	183.61	40°11'30.321"N	104°42'03.293"W	0.00	
12625.00†	90.410	0.232	7087.05	5863.07	5860.24	184.02	40°11'31.309"N	104°42'03.288"W	0.00	
12725.00†	90.410	0.232	7086.33	5963.04	5960.23	184.42	40°11'32.297"N	104°42'03.283"W	0.00	
12825.00†	90.410	0.232	7085.61	6063.01	6060.23	184.83	40°11'33.285"N	104°42'03.277"W	0.00	
12925.00†	90.410	0.232	7084.90	6162.98	6160.23	185.23	40°11'34.273"N	104°42'03.272"W	0.00	
13025.00†	90.410	0.232	7084.18	6262.95	6260.22	185.64	40°11'35.262"N	104°42'03.267"W	0.00	
13125.00†	90.410	0.232	7083.47	6362.92	6360.22	186.04	40°11'36.250"N	104°42'03.262"W	0.00	
13225.00†	90.410	0.232	7082.75	6462.89	6460.22	186.45	40°11'37.238"N	104°42'03.256"W	0.00	
13325.00†	90.410	0.232	7082.04	6562.87	6560.21	186.85	40°11'38.226"N	104°42'03.251"W	0.00	
13425.00†	90.410	0.232	7081.32	6662.84	6660.21	187.26	40°11'39.214"N	104°42'03.246"W	0.00	
13525.00†	90.410	0.232	7080.61	6762.81	6760.21	187.66	40°11'40.202"N	104°42'03.241"W	0.00	
13625.00†	90.410	0.232	7079.89	6862.78	6860.20	188.07	40°11'41.191"N	104°42'03.236"W	0.00	
13725.00†	90.410	0.232	7079.18	6962.75	6960.20	188.47	40°11'42.179"N	104°42'03.230"W	0.00	
13749.54	90.410	0.232	7079.00 ¹	6987.28	6984.74	188.57	40°11'42.421"N	104°42'03.229"W	0.00	End of Tangent (J)

HOLE & CASING SECTIONS - Ref Wellbore: CAMP 24N-30HZ PWB Ref Wellpath: CAMP 24N-30HZ (PERMIT) PWP

String/Diameter	Start MD [ft]	End MD [ft]	Interval [ft]	Start TVD [ft]	End TVD [ft]	Start N/S [ft]	Start E/W [ft]	End N/S [ft]	End E/W [ft]
13.5in Open Hole	25.00	800.00	775.00	25.00	800.00	0.00	0.00	0.00	0.00
9.625in Casing Surface	25.00	800.00	775.00	25.00	800.00	0.00	0.00	0.00	0.00
8.75in Open Hole	800.00	7459.71	6659.71	800.00	7124.00	0.00	0.00	695.12	163.10
7in Casing Intermediate	25.00	7459.71	7434.71	25.00	7124.00	0.00	0.00	695.12	163.10
6.125in Open Hole	7459.71	13749.54	6289.83	7124.00	7079.00	695.12	163.10	6984.74	188.57
4.5in Casing Production	25.00	13749.54	13724.54	25.00	7079.00	0.00	0.00	6984.74	188.57



Planned Wellpath Report

CAMP 24N-30HZ (PERMIT) PWP

Page 5 of 6



REFERENCE WELLPATH IDENTIFICATION

Operator	ANADARKO E&P COMPANY LP	Slot	SLOT#06 CAMP 24N-30HZ (460'FSL & 1319'FEL, SEC.31)
Area	COLORADO	Well	CAMP 24N-30HZ
Field	WELD COUNTY (KERR MCGEE)	Wellbore	CAMP 24N-30HZ PWB
Facility	SEC.31-T3N-R65W		

TARGETS

Name	MD [ft]	TVD [ft]	North [ft]	East [ft]	Grid East [US ft]	Grid North [US ft]	Latitude	Longitude	Shape
CAMP 5 PAD SECTION 30		0.00	0.00	0.00	3223102.38	1307943.65	40°10'33.398"N	104°42'05.659"W	polygon
CAMP 5 PAD SECTION 31		0.00	0.00	0.00	3223102.38	1307943.65	40°10'33.398"N	104°42'05.659"W	polygon
1) CAMP 24N-30HZ BHL ON PLAT (2159'FSL & 1160'FEL, SEC.30) REV- 1	13749.54	7079.00	6984.74	188.57	3223228.05	1314929.49	40°11'42.421"N	104°42'03.229"W	point
CAMP 5 PAD SEC. 30 HARDLINES (460' SETBACKS)		7400.00	0.00	0.00	3223102.38	1307943.65	40°10'33.398"N	104°42'05.659"W	polygon
CAMP 5 PAD SEC. 31 HARDLINES (460' SETBACKS)		7400.00	0.00	0.00	3223102.38	1307943.65	40°10'33.398"N	104°42'05.659"W	polygon

SURVEY PROGRAM - Ref Wellbore: CAMP 24N-30HZ PWB Ref Wellpath: CAMP 24N-30HZ (PERMIT) PWP

Start MD [ft]	End MD [ft]	Positional Uncertainty Model	Log Name/Comment	Wellbore
25.00	13749.54	NaviTrak (Standard)		CAMP 24N-30HZ PWB



Planned Wellpath Report

CAMP 24N-30HZ (PERMIT) PWP

Page 6 of 6



REFERENCE WELLPATH IDENTIFICATION

Operator	ANADARKO E&P COMPANY LP	Slot	SLOT#06 CAMP 24N-30HZ (460'FSL & 1319'FEL, SEC.31)
Area	COLORADO	Well	CAMP 24N-30HZ
Field	WELD COUNTY (KERR MCGEE)	Wellbore	CAMP 24N-30HZ PWB
Facility	SEC.31-T3N-R65W		

WELLPATH COMMENTS

MD [ft]	Inclination [°]	Azimuth [°]	TVD [ft]	Comment
3962.45	2.635	50.000	3961.00	PARKMAN
4360.87	2.635	50.000	4359.00	SUSSEX
7071.36	51.603	1.842	7000.00	SHARON SPRINGS
7200.07	64.463	1.208	7068.00	NIOBRARA A
7263.11	70.762	0.949	7092.00	NIOBRARA B