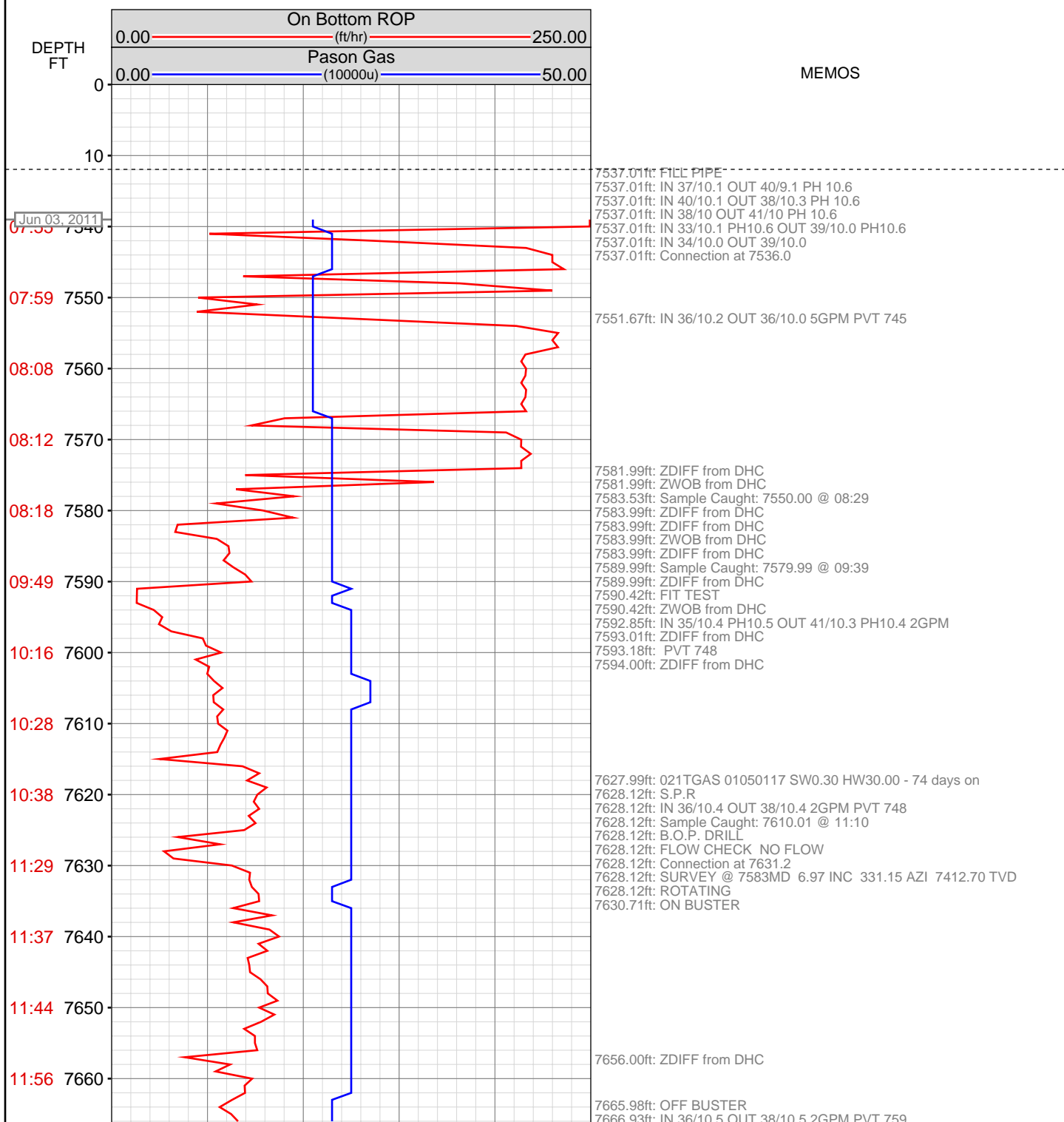
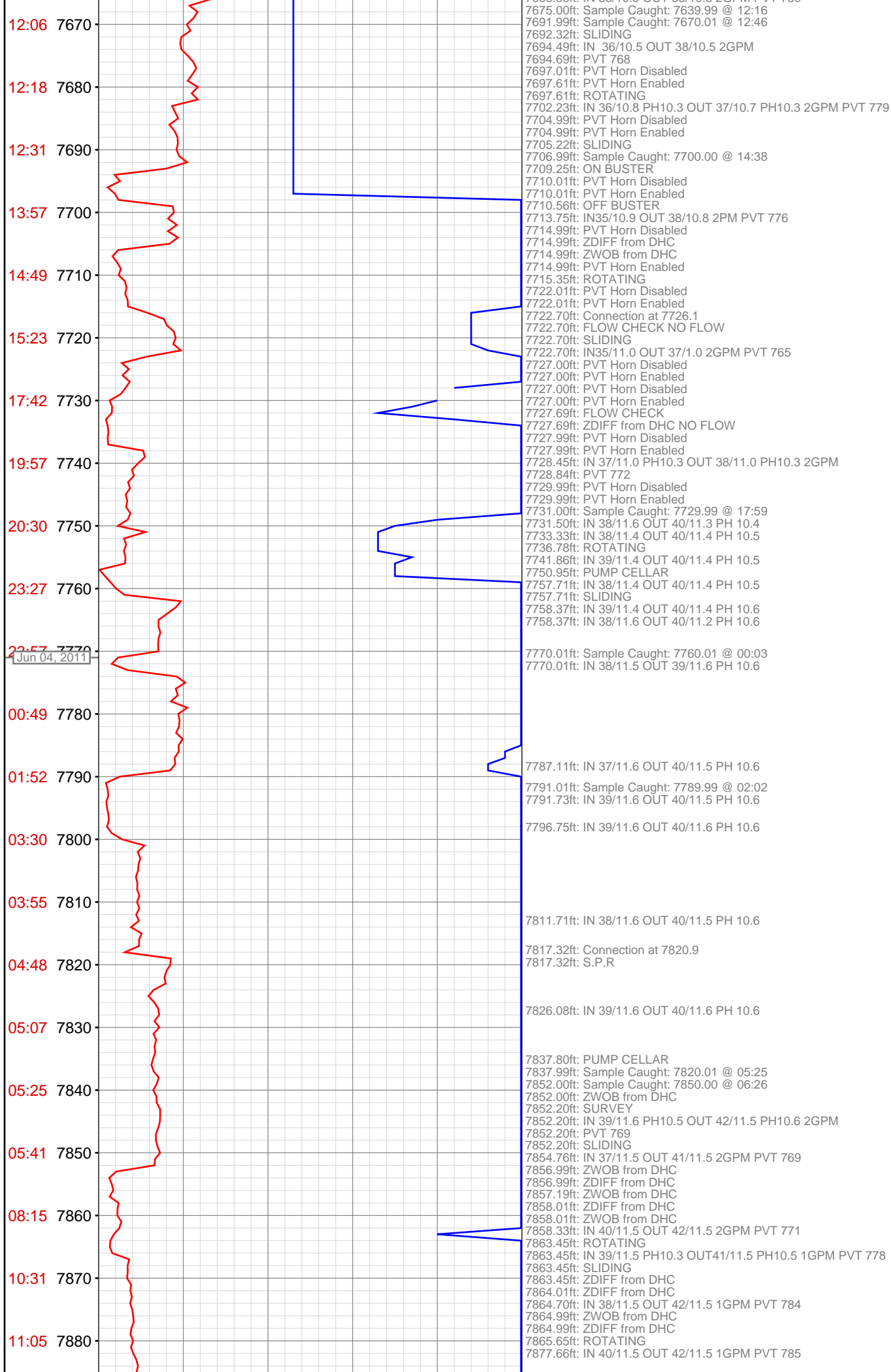
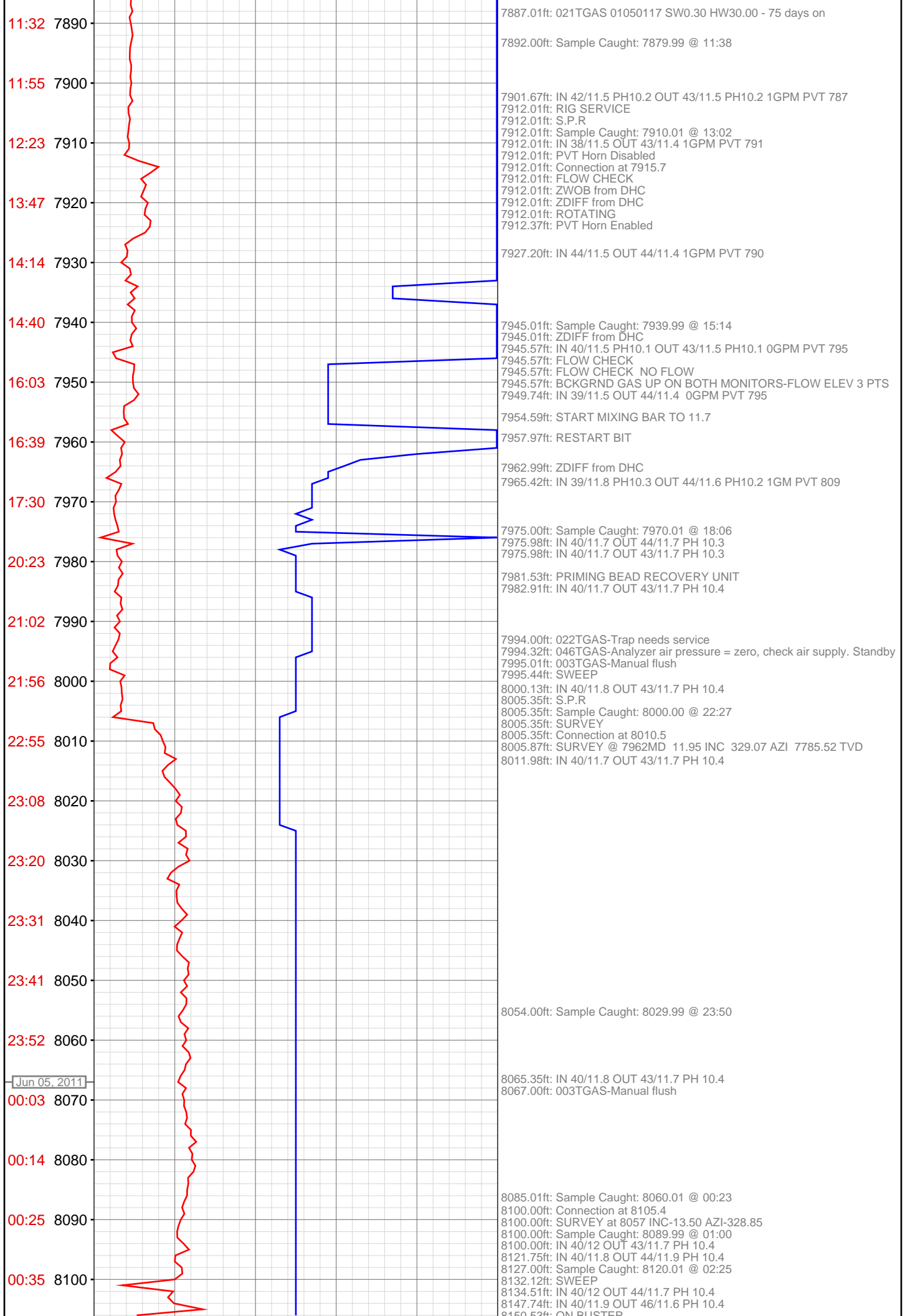


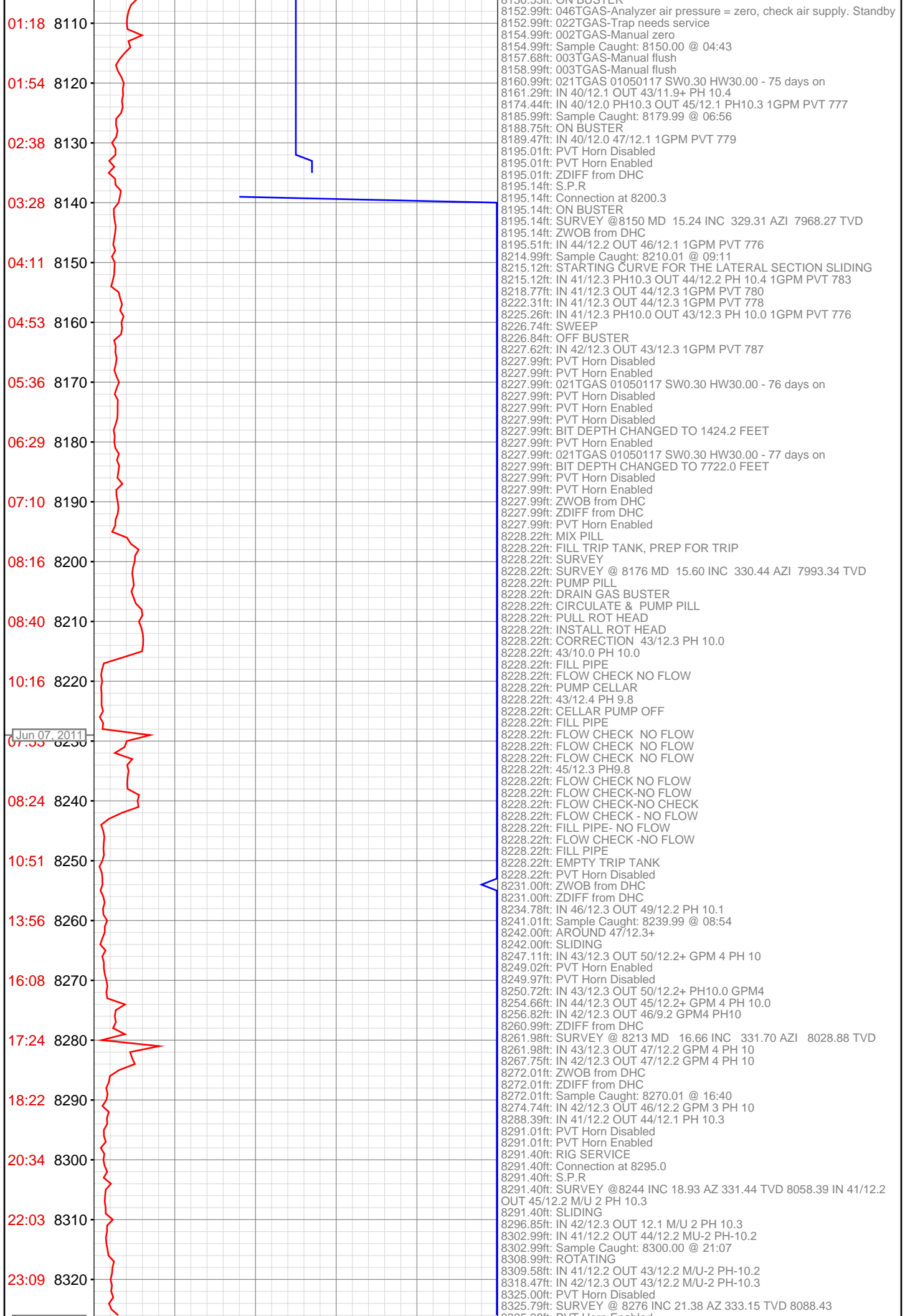
OPERATOR: EnCana Oil & Gas (USA), Inc.
WELL: ORCHARD UNIT 18-15H
FIELD:
LOCATION: SEC 20 T8S R96W
COUNTRY: USA
RIG: Ensign 119

CONTRACTOR: Ensign US Drilling
UNIQUE WELL ID: 05-077-10112-00
SPUD DATE: Jun 03, 2011 09:30
RELEASE DATE: Jul 03, 2011 12:00









Jun 08, 2011

00:34 8330

01:45 8340

03:41 8350

04:50 8360

06:07 8370

07:34 8380

08:22 8390

09:09 8400

10:36 8410

11:25 8420

13:00 8430

14:41 8440

15:43 8450

16:33 8460

18:07 8470

19:13 8480

20:55 8490

21:33 8500

22:16 8510

Jun 09, 2011

00:21 8520

02:09 8530

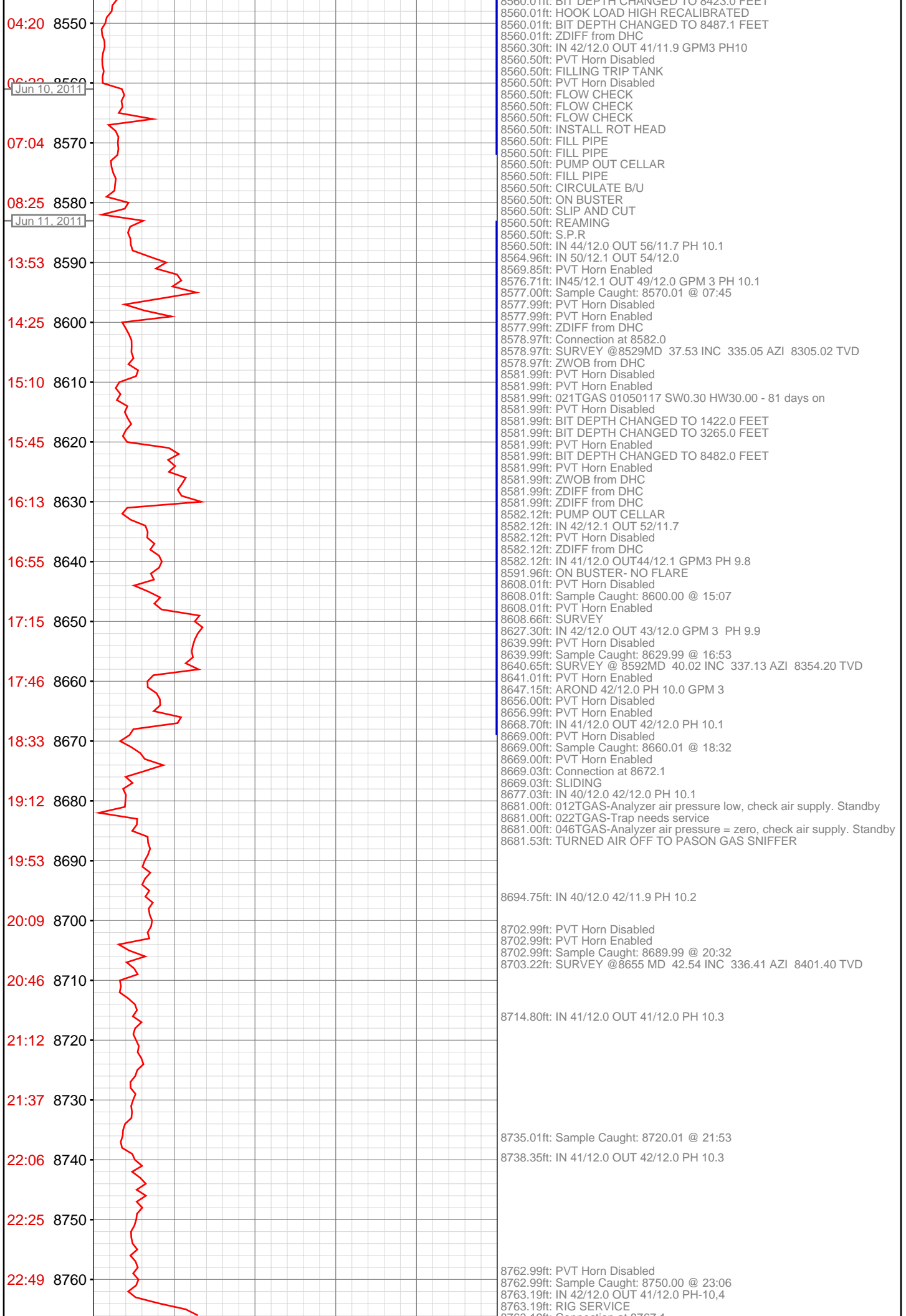
03:00 8540

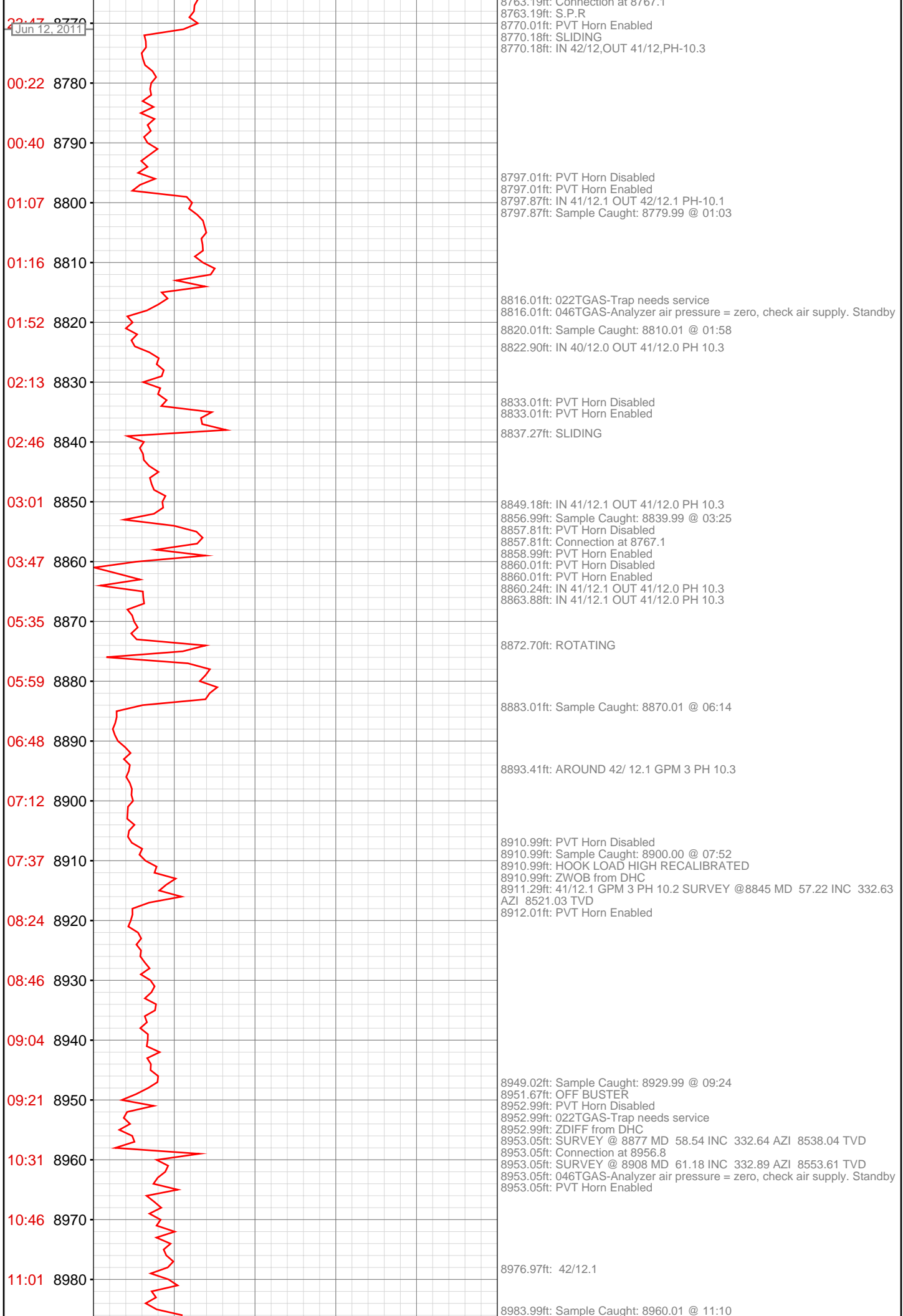
8325.98ft: PVT Horn Enabled
8326.28ft: SLIDING
8326.38ft: IN 41/12.2 OUT 43/12.2 M/U-2 PH-10.2
8333.99ft: Sample Caught: 8329.99 @ 01:00
8334.97ft: IN 41/12.2 OUT 43/12.2 M/U 2 PH 10.2
8341.01ft: PVT Horn Disabled
8341.01ft: PVT Horn Enabled
8341.37ft: IN 40/12.2 OUT 43/12.2 M/U 2 PH 10.2
8344.00ft: PVT Horn Disabled
8344.00ft: PVT Horn Enabled
8344.23ft: FLOW CHECK
8344.23ft: ON BUSTER NO FLOW
8344.23ft: NO FLAIR
8344.82ft: IN 40/12.2 OUT 42/12.2 M/U-2 PH-10.3
8350.95ft: ROTATING
8352.20ft: IN 40/12.2 OUT 42/12.2 M/U 2 PH 10.2
8356.00ft: PVT Horn Disabled
8356.00ft: SURVEY @ 8307 INC 23.17 AZ 334.82 TVD 8117.12
8356.00ft: PVT Horn Enabled
8356.00ft: SLIDING
8360.01ft: 021TGAS 01050117 SW0.30 HW30.00 - 78 days on
8361.35ft: IN 41/12.2 OUT 42/12.2 PH 10.3
8362.99ft: Sample Caught: 8360.01 @ 05:23
8364.01ft: PVT Horn Disabled
8364.01ft: PVT Horn Enabled
8367.82ft: PUMP CELLAR
8374.34ft: ALL AROUND 42/12.3 PH 10.3
8379.00ft: ZWOB from DHC
8379.00ft: ZDIFF from DHC
8381.17ft: IN41/12.3 OUT43 /12.3 PH 10.2 GPM 3
8382.84ft: IN 43/ 12.3
8385.01ft: ZWOB from DHC
8385.01ft: ZDIFF from DHC
8385.14ft: Connection at 8389.9
8389.99ft: IN TALLY: HOLE DEPTH SET TO 8389.9

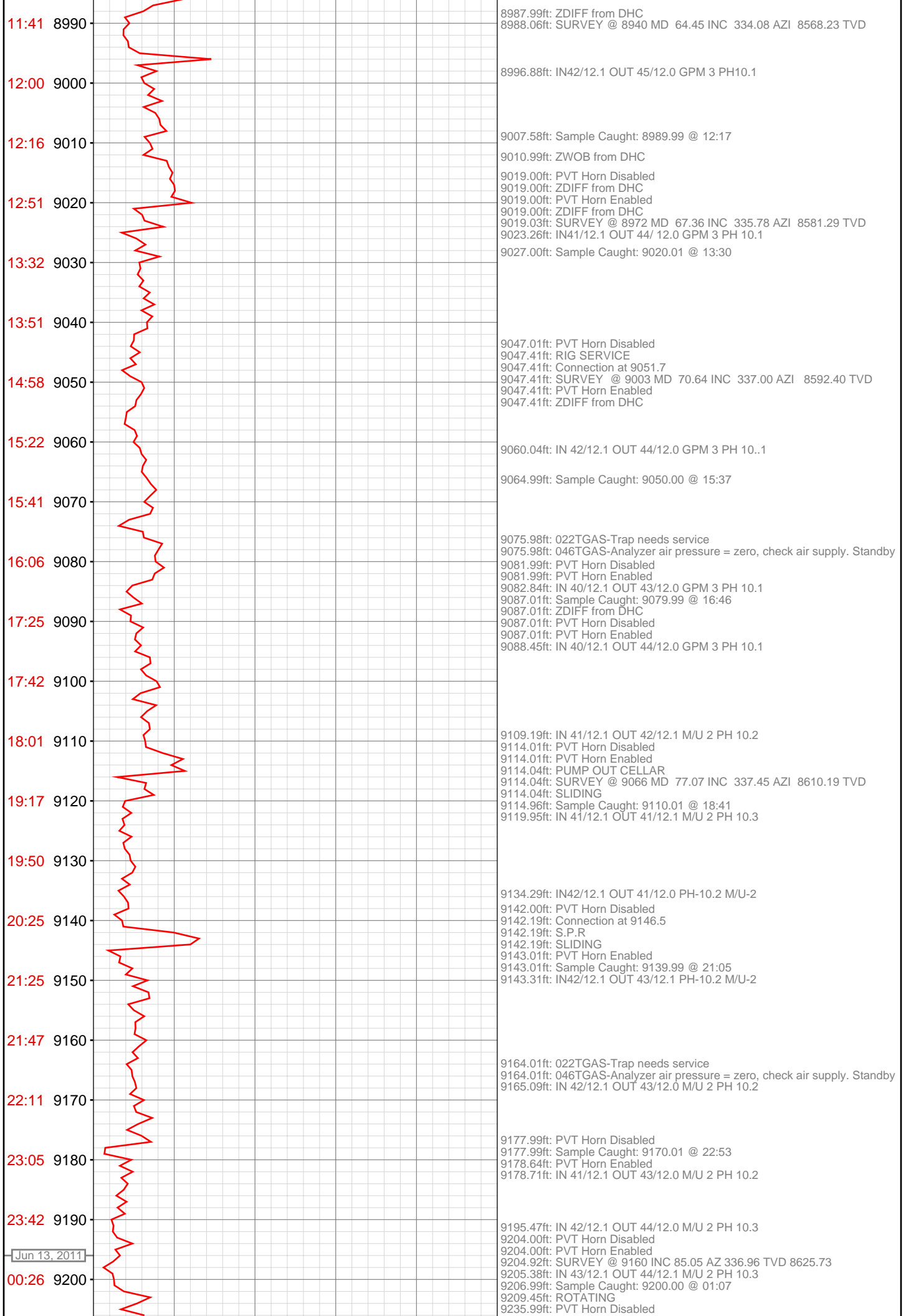
8397.01ft: Sample Caught: 8389.99 @ 08:51
8400.13ft: IN 43/12.3 OUT 42/12.3 GPM 3 PH 10.1

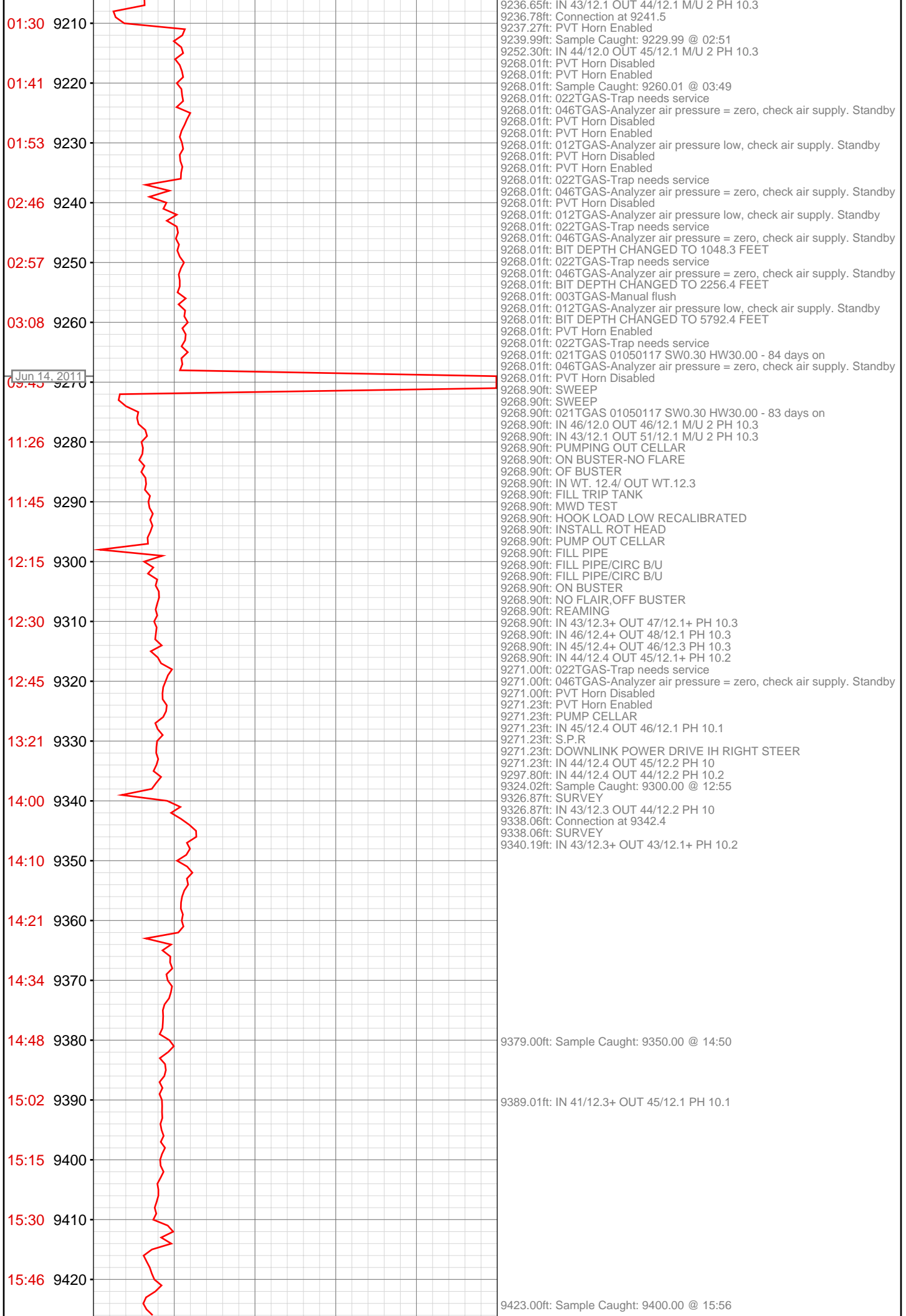
8406.40ft: IN 43 /12.3 OUT 42/12.3

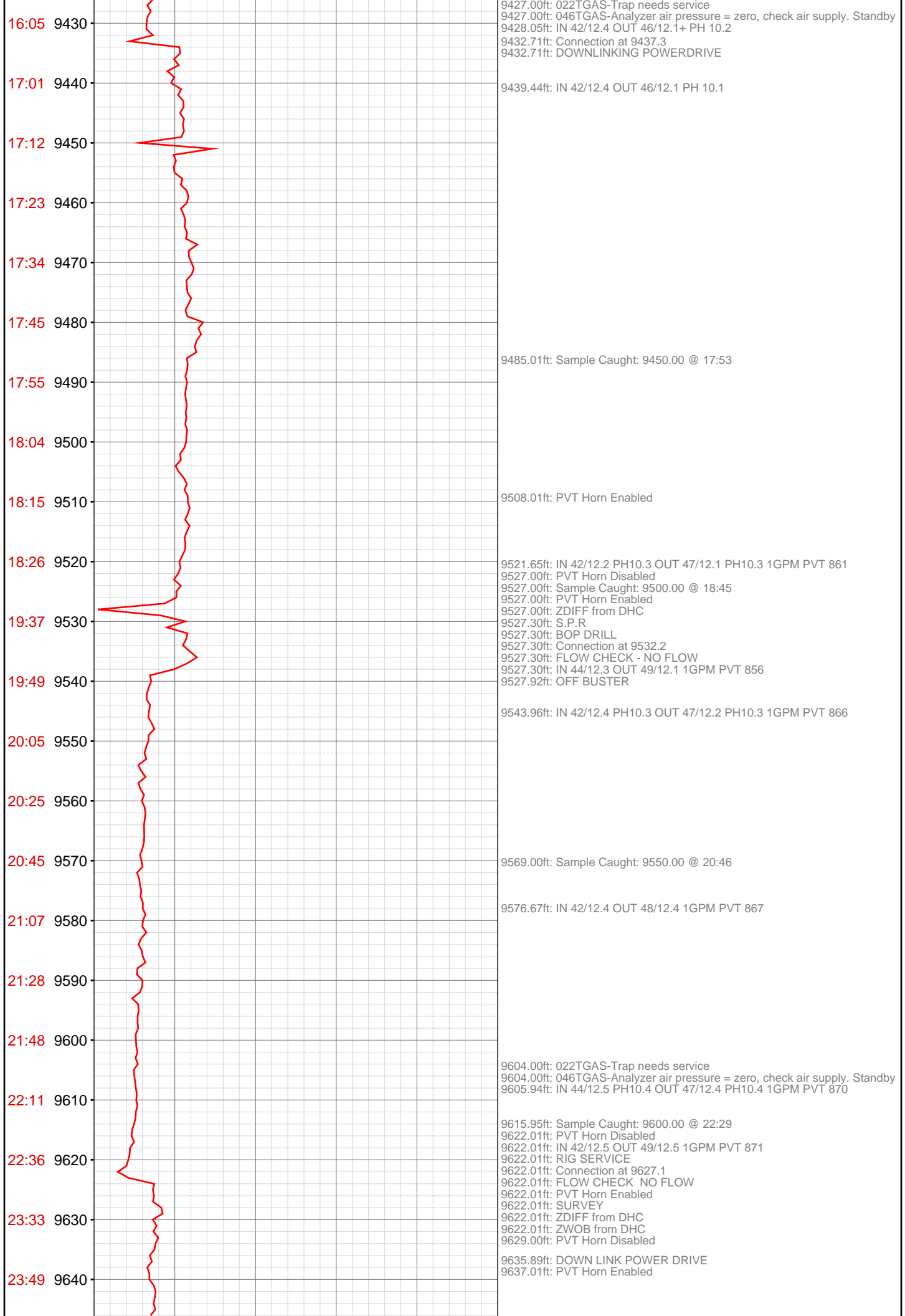
8421.00ft: PVT Horn Disabled
8421.00ft: PVT Horn Enabled
8421.00ft: ZDIFF from DHC
8421.00ft: Sample Caught: 8420.01 @ 11:59
8421.16ft: OFF BUSTER
8421.23ft: IN 12.2+/41 OUT 12.2+ / 43 GPM 10 PH 10.0
8424.02ft: ZWOB from DHC
8431.89ft: IN40/12.1+ OUT43/12.1 GPM 3 PH10
8440.91ft: IN 12.1+/40 OUT 12.1/43 GPM 3 PH 10
8445.37ft: TRANSFERING MUD
8452.99ft: PVT Horn Disabled
8452.99ft: PVT Horn Enabled
8453.94ft: SURVEY@8402 MD 31.64 INC 335.99 AZI 8201.30 TVD 620.22VSECT
8454.99ft: Sample Caught: 8450.00 @ 16:17
8455.64ft: IN 43/12.1 OUT 43/12.1 GPM 10 PH 10
8464.96ft: IN 41/11.9+ OUT 43/12.0 GPM 10 PH 10
8464.99ft: PVT Horn Disabled
8464.99ft: ZDIFF from DHC
8464.99ft: PVT Horn Enabled
8465.29ft: PVT Horn Enabled
8465.29ft: PVT Horn Disabled
8468.01ft: IN 40/11.9+ OUT 12.0/43
8469.03ft: IN 40/12.0 OUT 45/11.6 PH 10.1
8473.79ft: ON BUSTER
8474.90ft: NO FLAIR
8477.82ft: IN 41/12.0 OUT 42/12.0 PH 10.1
8481.00ft: Sample Caught: 8479.99 @ 19:49
8481.00ft: PVT Horn Enabled
8481.96ft: RIG SERVICE
8481.96ft: PVT Horn Disabled
8481.96ft: S.P.R
8481.96ft: SURVEY @ 8434 INC 33.61 AZ 334.44 TVD 8228.25 Connection at 8484.7
8481.96ft: IN 40/12.0 OUT 42/11.9 PH 10.1
8481.96ft: SLIDING
8484.38ft: ROTATING
8491.90ft: IN 40/12.0 OUT 42/12.0 PH 10.2
8506.59ft: IN 40/11.9 OUT 41/11.9 PH 10.1
8516.01ft: Sample Caught: 8510.01 @ 22:49
8516.01ft: PVT Horn Disabled
8516.01ft: PVT Horn Enabled
8516.11ft: SURVEY @ 8465 INC 35.80 AZ 334.82 TVD 8253.73 IN 41/12.0 OUT 41/12.0 PH 10.2
8518.14ft: PUMP OUT CELLAR
8518.14ft: IN 41/12.0 OUT 40/12.0 PH 10.2
8522.57ft: PUMP OUT CELLAR
8522.83ft: IN 40/12.0 OUT 41/12.0 PH 10.2
8525.95ft: ROTATING
8528.87ft: IN 40/12.0 OUT 42/12.0 PH 10.1
8540.85ft: IN 40/12.0 OUT 42/12.0 PH 10.1
8545.01ft: PVT Horn Disabled
8545.01ft: PVT Horn Enabled
8545.24ft: Sample Caught: 8539.99 @ 03:30
8545.24ft: SWITCH PUMPS
8548.00ft: PVT Horn Disabled
8548.00ft: PVT Horn Enabled
8548.36ft: SURVEY @ 8497 INC 36.80 AZ 335.21 TVD 8279.52
8548.36ft: IN 40/12.0 OUT 41/12.0 PH 10.1
8552.99ft: 021TGAS 01050117 SW0.30 HW30.00 - 79 days on
8554.00ft: IN 41/11.9 OUT 42/12.0 PH 10.3
8559.61ft: OFF BUSTER
8560.01ft: PVT Horn Disabled
8560.01ft: PVT Horn Enabled
8560.01ft: PVT Horn Enabled
8560.01ft: BIT DEPTH CHANGED TO 1426.7 FEET
8560.01ft: HOOK LOAD LOW RECALIBRATED
8560.01ft: HOOK LOAD HIGH RECALIBRATED
8560.01ft: 021TGAS 01050117 SW0.30 HW30.00 - 80 days on
8560.01ft: BIT DEPTH CHANGED TO 1422.0 FEET











Jun 15, 2011

00:05 9650

00:21 9660

00:38 9670

00:55 9680

01:13 9690

01:27 9700

01:43 9710

02:20 9720

02:37 9730

02:51 9740

03:05 9750

03:19 9760

03:34 9770

03:49 9780

04:04 9790

04:17 9800

04:33 9810

05:10 9820

05:24 9830

05:40 9840

05:53 9850

06:08 9860

9646.69ft: IN 43/12.6 PH10.3 OUT 49/12.5 PH10.3 1GPM PVT 863

9672.01ft: Sample Caught: 9650.00 @ 00:46

9678.38ft: IN 44/12.6 OUT 50/12.5 1GPM PVT 865

9716.01ft: PVT Horn Disabled
9716.01ft: Sample Caught: 9700.00 @ 02:17
9716.83ft: IN 45/12.6 PH10.3 OUT 51/12.6 PH10.3 1GPM PVT 866
9716.83ft: Connection at 9721.9
9722.01ft: PVT Horn Enabled

9725.79ft: OFF BUSTER

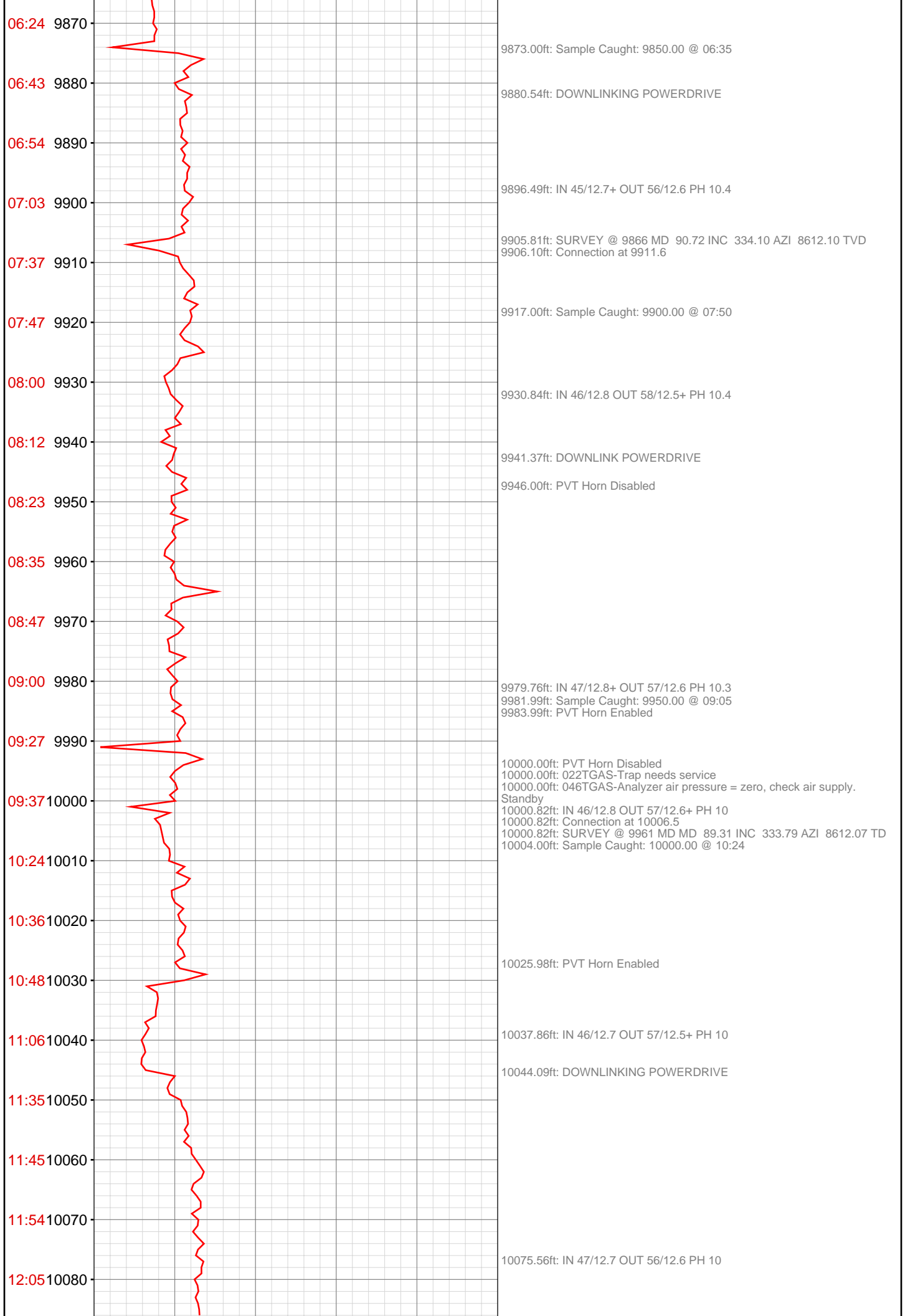
9741.73ft: IN 44/12.6 OUT 52/12.6 1GPM PVT 868

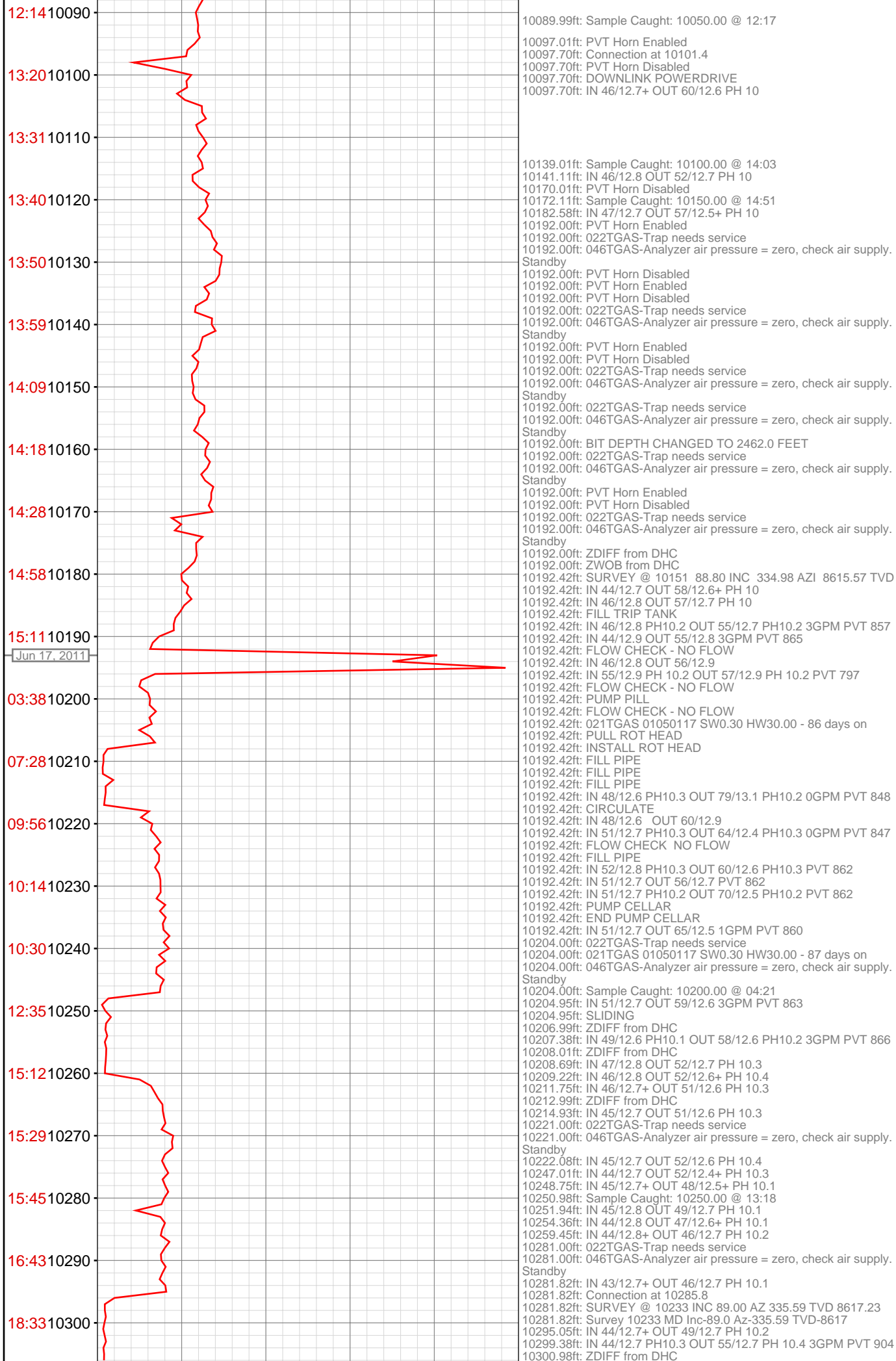
9776.51ft: Sample Caught: 9750.00 @ 03:47

9784.51ft: IN 45/12.6 PH10.4 OUT 53/12.6 PH10.4 1GPM PVT 867
9787.01ft: 022TGAS-Trap needs service
9787.01ft: 021TGAS 01050117 SW0.30 HW30.00 - 85 days on
9787.01ft: 046TGAS-Analyzer air pressure = zero, check air supply. Standby

9810.99ft: PVT Horn Disabled
9810.99ft: PVT Horn Enabled
9811.45ft: FLOW CHECK - NO FLOW
9811.45ft: Connection at 9816.8
9811.45ft: SURVEY
9812.40ft: IN 46/12.6 PH10.4 OUT 55/12.6 PH10.4 3GPM PVT 862
9814.99ft: Sample Caught: 9800.00 @ 05:08

9854.46ft: IN 45/12.7 OUT 57/12.5+ PH 10.5





10089.99ft: Sample Caught: 10050.00 @ 12:17

10097.01ft: PVT Horn Enabled
10097.70ft: Connection at 10101.4
10097.70ft: PVT Horn Disabled
10097.70ft: DOWNLINK POWERDRIVE
10097.70ft: IN 46/12.7+ OUT 60/12.6 PH 10

10139.01ft: Sample Caught: 10100.00 @ 14:03
10141.11ft: IN 46/12.8 OUT 52/12.7 PH 10
10170.01ft: PVT Horn Disabled
10172.11ft: Sample Caught: 10150.00 @ 14:51
10182.58ft: IN 47/12.7 OUT 57/12.5+ PH 10
10192.00ft: PVT Horn Enabled
10192.00ft: 022TGAS-Trap needs service
10192.00ft: 046TGAS-Analyzer air pressure = zero, check air supply.

Standby
10192.00ft: PVT Horn Disabled
10192.00ft: PVT Horn Enabled
10192.00ft: PVT Horn Disabled
10192.00ft: 022TGAS-Trap needs service
10192.00ft: 046TGAS-Analyzer air pressure = zero, check air supply.
Standby
10192.00ft: PVT Horn Enabled
10192.00ft: PVT Horn Disabled
10192.00ft: 022TGAS-Trap needs service
10192.00ft: 046TGAS-Analyzer air pressure = zero, check air supply.

Standby
10192.00ft: 022TGAS-Trap needs service
10192.00ft: 046TGAS-Analyzer air pressure = zero, check air supply.
Standby
10192.00ft: BIT DEPTH CHANGED TO 2462.0 FEET
10192.00ft: 022TGAS-Trap needs service
10192.00ft: 046TGAS-Analyzer air pressure = zero, check air supply.

Standby
10192.00ft: PVT Horn Enabled
10192.00ft: PVT Horn Disabled
10192.00ft: 022TGAS-Trap needs service
10192.00ft: 046TGAS-Analyzer air pressure = zero, check air supply.

Standby
10192.00ft: ZDIFF from DHC
10192.00ft: ZWOB from DHC
10192.42ft: SURVEY @ 10151 88.80 INC 334.98 AZI 8615.57 TVD
10192.42ft: IN 44/12.7 OUT 58/12.6+ PH 10
10192.42ft: IN 46/12.8 OUT 57/12.7 PH 10
10192.42ft: FILL TRIP TANK
10192.42ft: IN 46/12.8 PH10.2 OUT 55/12.7 PH10.2 3GPM PVT 857
10192.42ft: IN 44/12.9 OUT 55/12.8 3GPM PVT 865
10192.42ft: FLOW CHECK - NO FLOW
10192.42ft: IN 46/12.8 OUT 56/12.9

10192.42ft: IN 55/12.9 PH 10.2 OUT 57/12.9 PH 10.2 PVT 797
10192.42ft: FLOW CHECK - NO FLOW

10192.42ft: PUMP PILL
10192.42ft: FLOW CHECK - NO FLOW
10192.42ft: 021TGAS 01050117 SW0.30 HW30.00 - 86 days on
10192.42ft: PULL ROT HEAD
10192.42ft: INSTALL ROT HEAD

10192.42ft: FILL PIPE
10192.42ft: FILL PIPE
10192.42ft: FILL PIPE
10192.42ft: IN 48/12.6 PH10.3 OUT 79/13.1 PH10.2 0GPM PVT 848
10192.42ft: CIRCULATE

10192.42ft: IN 48/12.6 OUT 60/12.9
10192.42ft: IN 51/12.7 PH10.3 OUT 64/12.4 PH10.3 0GPM PVT 847
10192.42ft: FLOW CHECK NO FLOW
10192.42ft: FILL PIPE

10192.42ft: IN 52/12.8 PH10.3 OUT 60/12.6 PH10.3 PVT 862
10192.42ft: IN 51/12.7 OUT 56/12.7 PVT 862
10192.42ft: IN 51/12.7 PH10.2 OUT 70/12.5 PH10.2 PVT 862

10192.42ft: PUMP CELLAR
10192.42ft: END PUMP CELLAR
10192.42ft: IN 51/12.7 OUT 65/12.5 1GPM PVT 860

10204.00ft: 022TGAS-Trap needs service
10204.00ft: 021TGAS 01050117 SW0.30 HW30.00 - 87 days on
10204.00ft: 046TGAS-Analyzer air pressure = zero, check air supply.

Standby
10204.00ft: Sample Caught: 10200.00 @ 04:21
10204.95ft: IN 51/12.7 OUT 59/12.6 3GPM PVT 863
10204.95ft: SLIDING

10206.99ft: ZDIFF from DHC
10207.38ft: IN 49/12.6 PH10.1 OUT 58/12.6 PH10.2 3GPM PVT 866
10208.01ft: ZDIFF from DHC

10208.69ft: IN 47/12.8 OUT 52/12.7 PH 10.3
10209.22ft: IN 46/12.8 OUT 52/12.6+ PH 10.4
10211.75ft: IN 46/12.7+ OUT 51/12.6 PH 10.3

10212.99ft: ZDIFF from DHC
10214.93ft: IN 45/12.7 OUT 51/12.6 PH 10.3

10221.00ft: 022TGAS-Trap needs service
10221.00ft: 046TGAS-Analyzer air pressure = zero, check air supply.

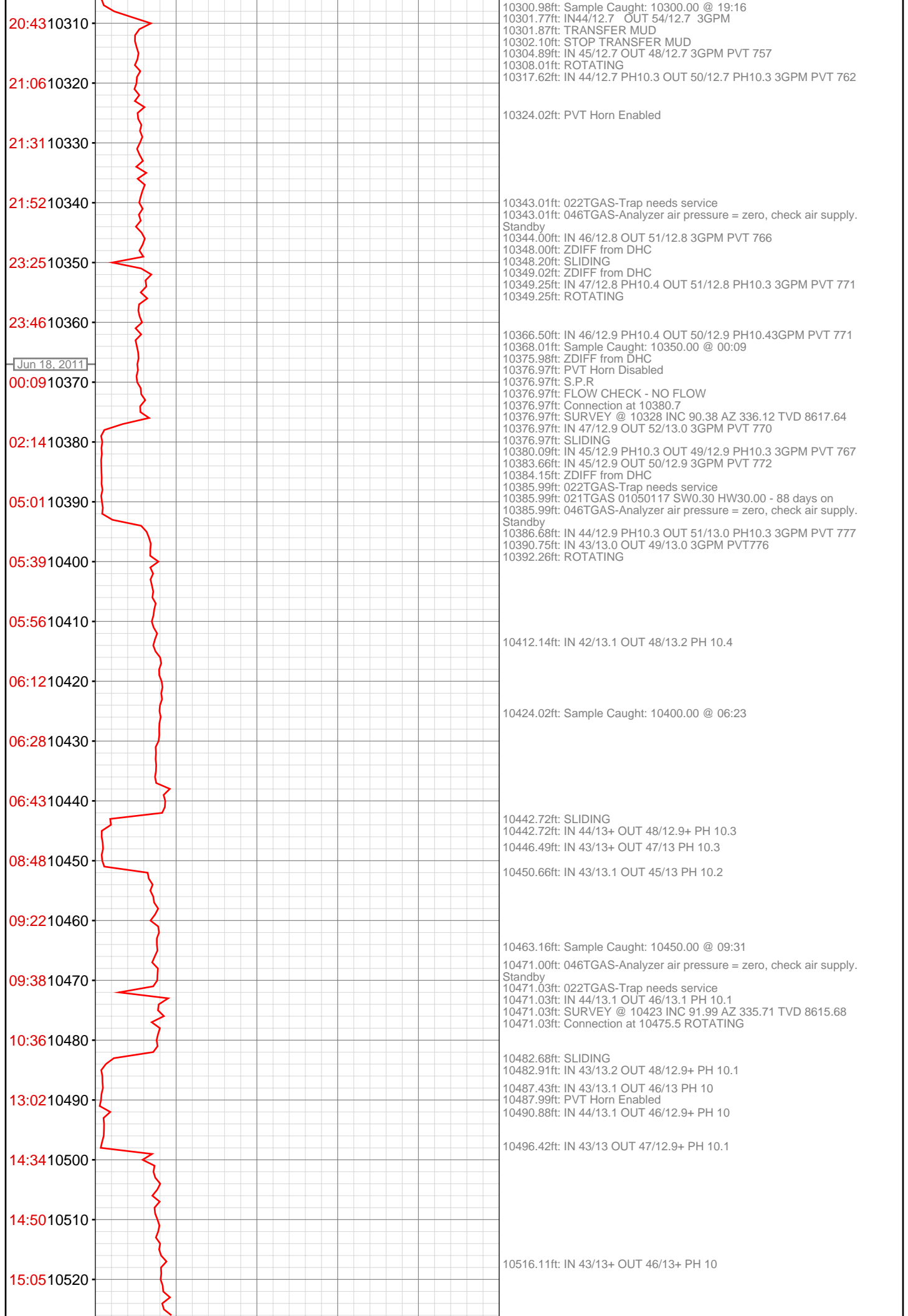
Standby
10222.08ft: IN 45/12.7 OUT 52/12.6 PH 10.4
10247.01ft: IN 44/12.7 OUT 52/12.4+ PH 10.3
10248.75ft: IN 45/12.7+ OUT 48/12.5+ PH 10.1

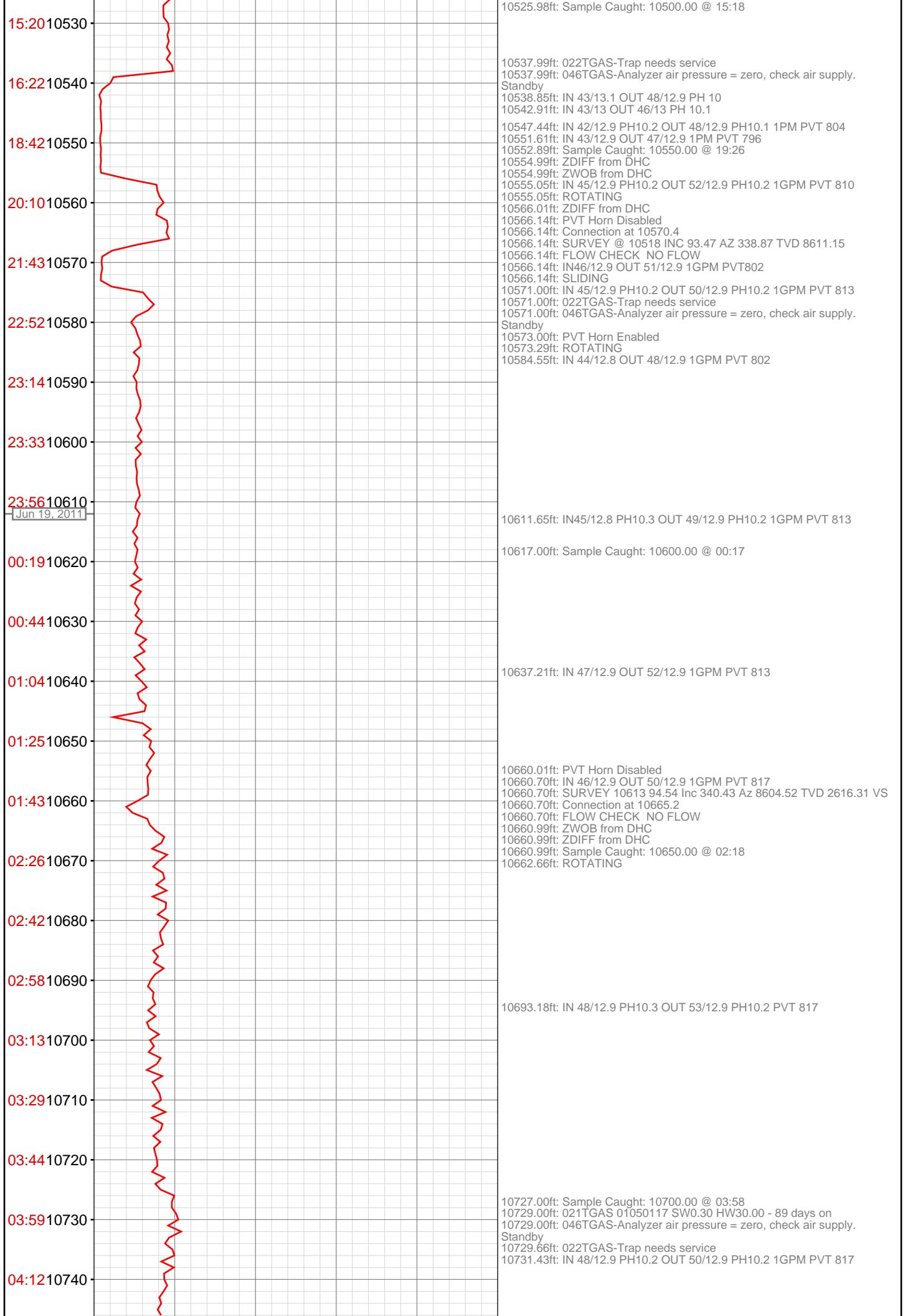
10250.98ft: Sample Caught: 10250.00 @ 13:18
10251.94ft: IN 45/12.8 OUT 49/12.7 PH 10.1
10254.36ft: IN 44/12.8 OUT 47/12.6+ PH 10.1
10259.45ft: IN 44/12.8+ OUT 46/12.7 PH 10.2

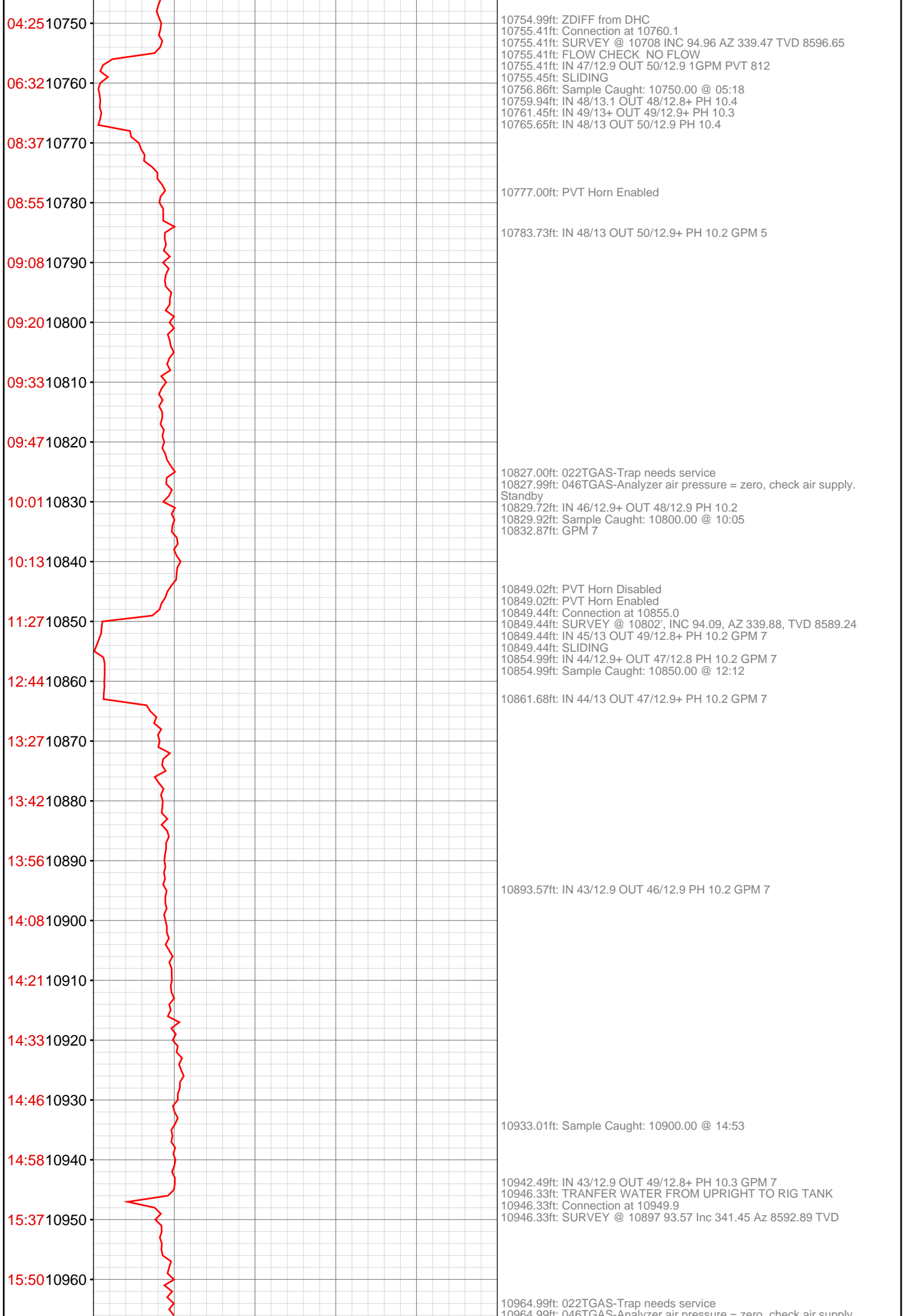
10281.00ft: 022TGAS-Trap needs service
10281.00ft: 046TGAS-Analyzer air pressure = zero, check air supply.

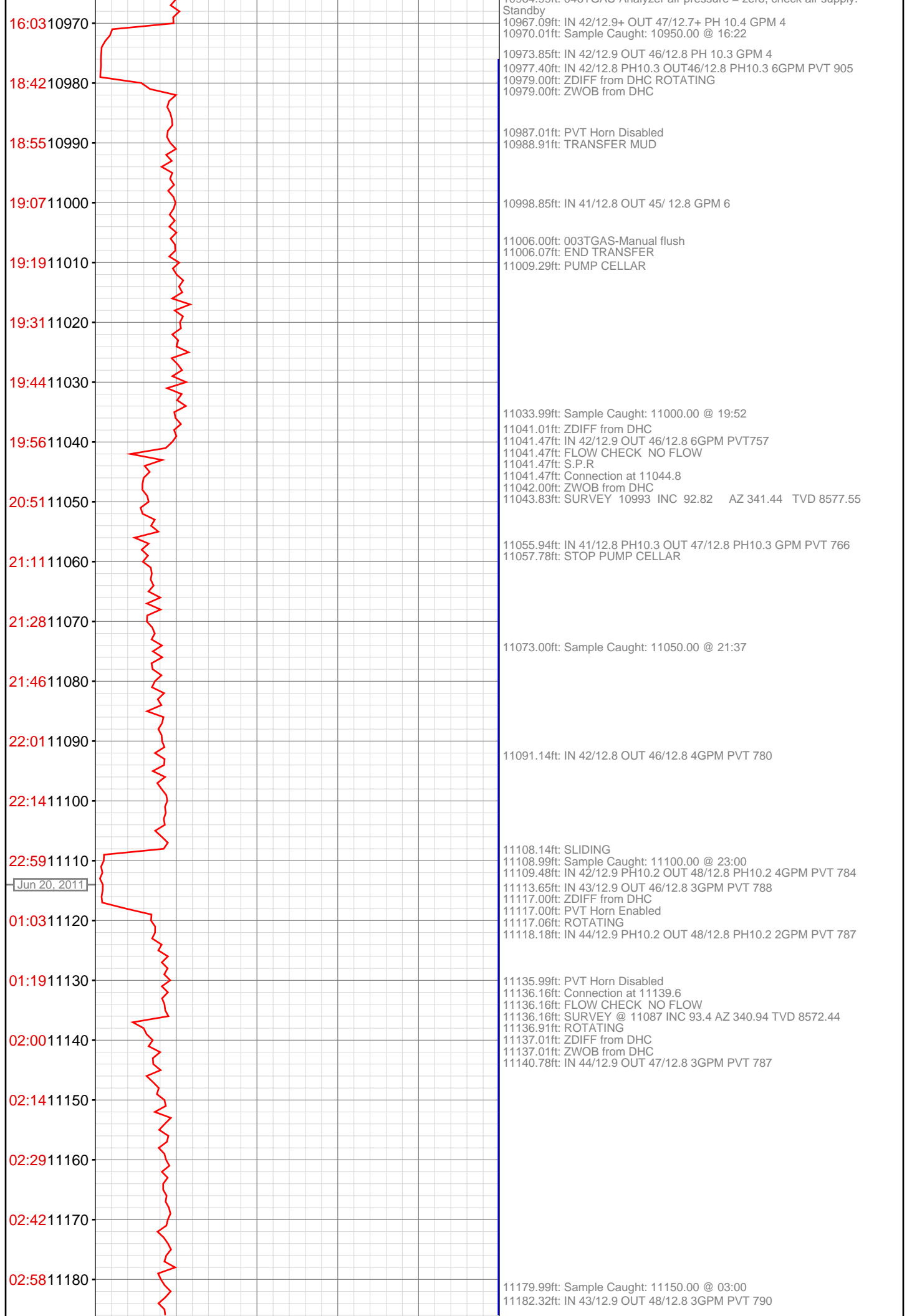
Standby
10281.82ft: IN 43/12.7+ OUT 46/12.7 PH 10.1
10281.82ft: Connection at 10285.8
10281.82ft: SURVEY @ 10233 INC 89.00 AZ 335.59 TVD 8617.23

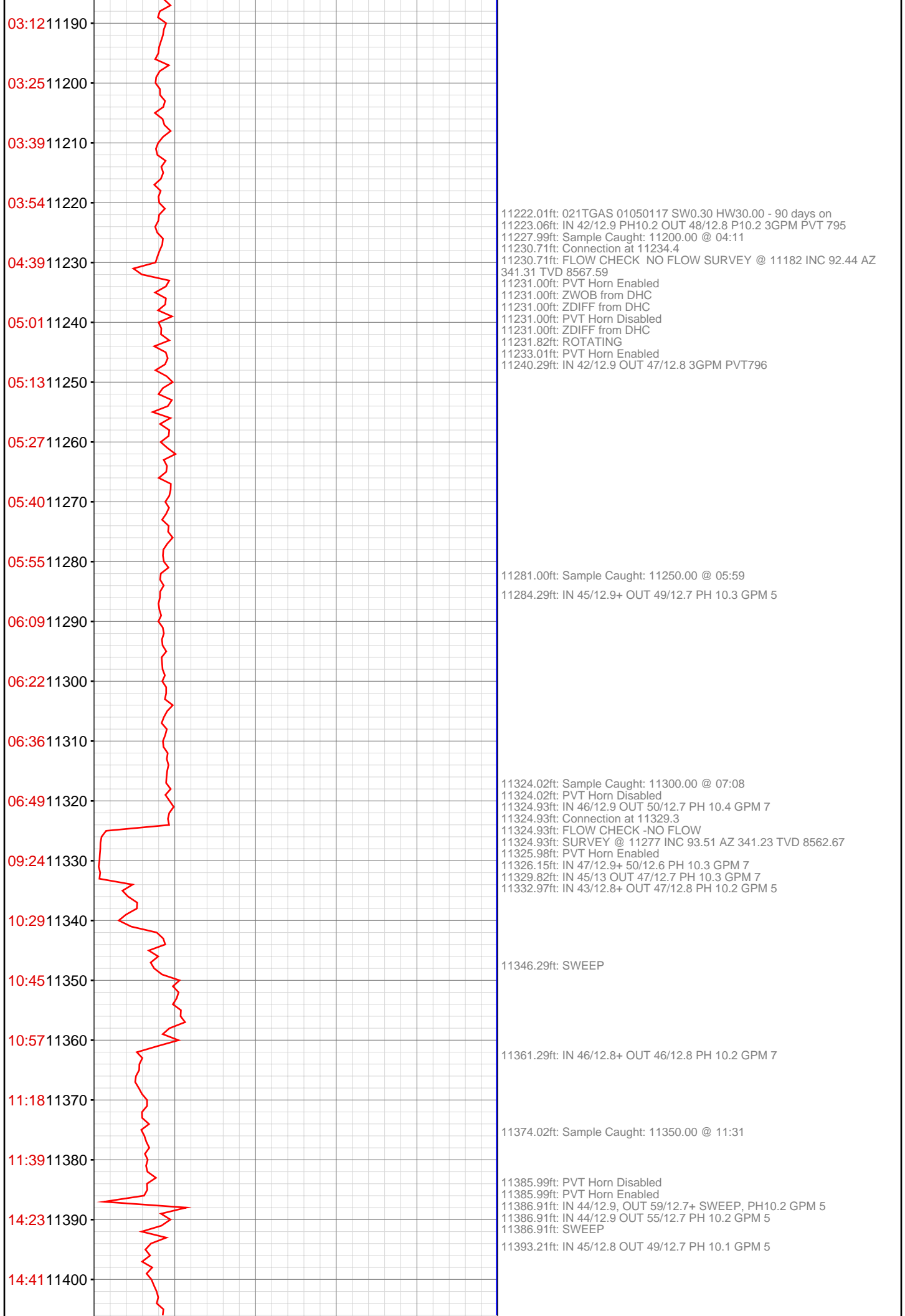
10281.82ft: Survey 10233 MD Inc-89.0 Az-335.59 TVD-8617
10295.05ft: IN 44/12.7+ OUT 49/12.7 PH 10.2
10299.38ft: IN 44/12.7 PH10.3 OUT 55/12.7 PH 10.4 3GPM PVT 904
10300.98ft: ZDIFF from DHC

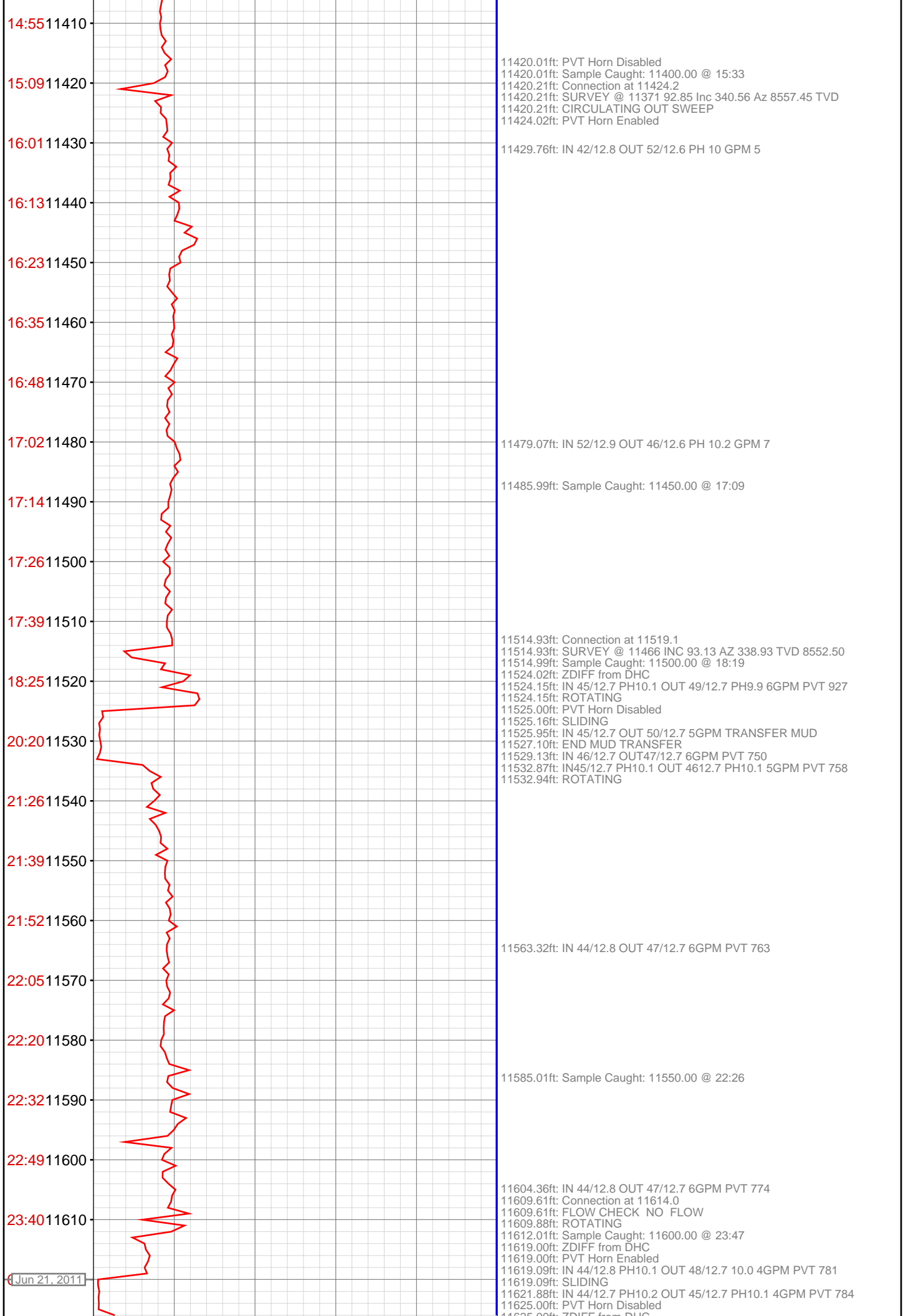


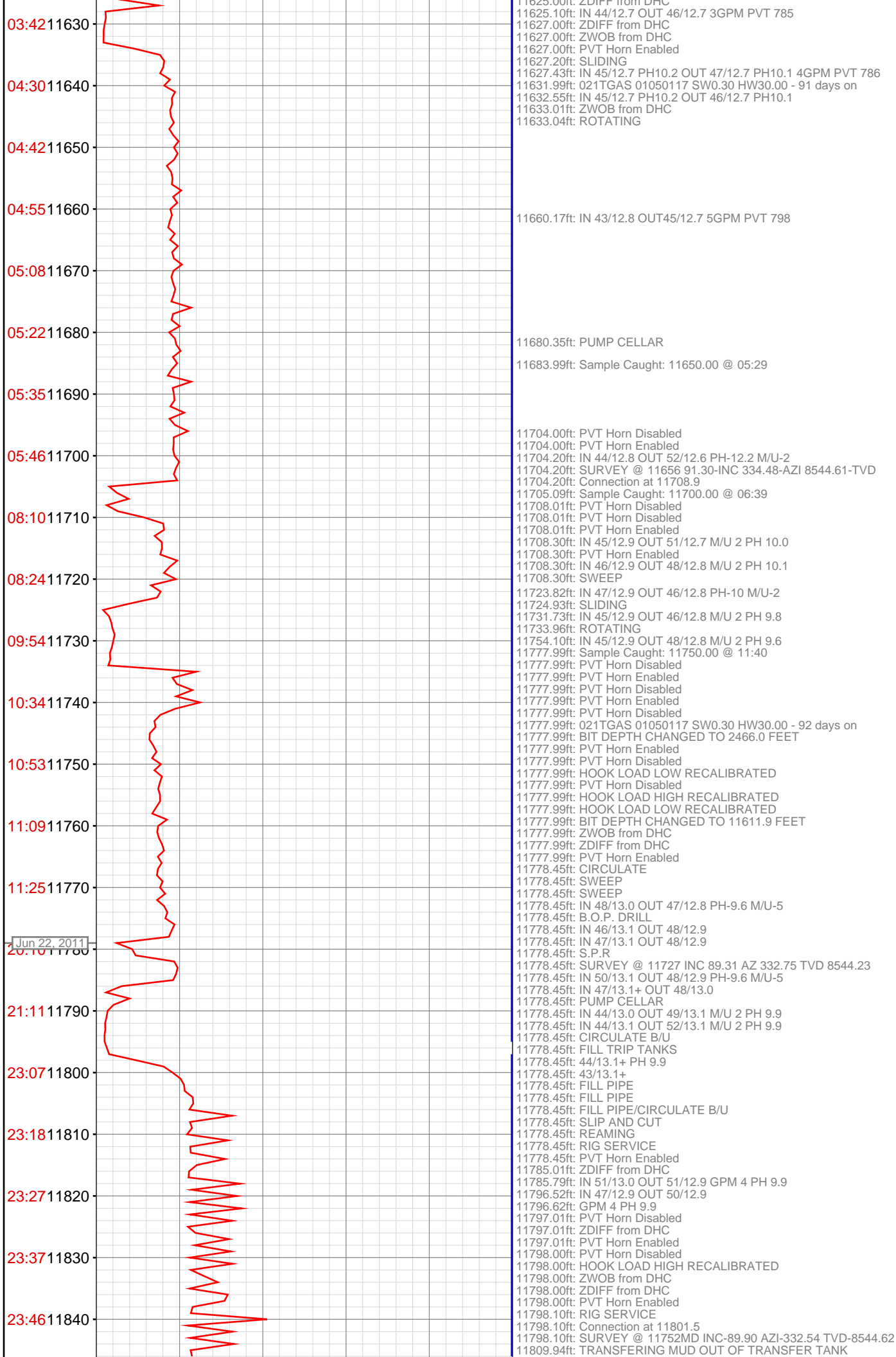












Jun 23, 2011

00:55 11850

02:56 11860

03:35 11870

03:48 11880

04:27 11890

04:36 11900

04:46 11910

06:00 11920

07:23 11930

07:34 11940

07:43 11950

07:53 11960

08:03 11970

08:14 11980

09:06 11990

10:16 12000

11:32 12010

11:44 12020

11:56 12030

12:07 12040

12:17 12050

12:59 12060

11829.30ft: IN 47/12.9 OUT 50/12.9 GPM 4 PH 9.9
11845.01ft: Sample Caught: 11800.00 @ 23:55
11848.00ft: PVT Horn Disabled
11848.00ft: PVT Horn Enabled
11848.95ft: TRANSFERING MUD
11848.95ft: ZDIFF from DHC
11848.95ft: ZDIFF from DHC
11850.69ft: IN 12.9+44 OUT 12.8/47 GPM 3 PH10.0
11852.99ft: Sample Caught: 11850.00 @ 01:37
11855.91ft: IN 48/12.9 OUT 47/12.8 GPM 4 PH 10
11862.73ft: IN 47/12.9 OUT 12.8/51 GPM 4 PH 10.1

11889.99ft: 021TGAS 01050117 SW0.30 HW30.00 - 93 days on
11889.99ft: PVT Horn Disabled
11889.99ft: HOOK LOAD LOW RECALIBRATED
11889.99ft: ZWOB from DHC
11889.99ft: ZDIFF from DHC
11889.99ft: PVT Horn Enabled
11890.16ft: Connection at 11896.4
11890.16ft: SURVEY @ 11847MD INC-88.97 AZI-333.58 TVD-8546.21

11912.99ft: IN 46/12.9 OUT 50/12.8 GPM 4 PH 10.1
11914.01ft: ZDIFF from DHC
11914.01ft: Sample Caught: 11900.00 @ 05:21
11917.49ft: IN12.9/46 OUT 52/12.6 GPM 4 PH 10.1
11919.85ft: IN 44/12.8 OUT 48/12.8 M/U 6 PH 10.1

11925.59ft: IN 44/12.8 OUT 47/12.8 M/U 6 PH 10.0
11928.02ft: ROTATING

11965.13ft: IN 47/12.9 OUT 44/12.7 M/U-6 PH-9.9

11987.99ft: PVT Horn Disabled
11987.99ft: PVT Horn Enabled
11988.32ft: Sample Caught: 11950.00 @ 08:28
11988.32ft: Connection at 11991.3
11988.32ft: SURVEY @ 11942 INC 89.31 AZ 334.24 TVD 8547.63
11988.32ft: SLIDING
11988.45ft: IN 46/12.9 OUT 48/12.6 M/U 6 PH 9.9

11997.97ft: IN 46/12.9 OUT 47/12.8 M/U 6 PH 9.8

12002.99ft: Sample Caught: 12000.00 @ 11:01
12004.00ft: IN 47/13.0 OUT 48/12.8 M/U 6 PH 9.7
12007.02ft: ROTATING

12034.48ft: IN 47/12.9 OUT 46/12.9 M/U 3 PH 9.6
12058.99ft: Sample Caught: 12050.00 @ 13:02
12060.14ft: IN 45/12.9 OUT 47/12.8 M/U 3 PH 9.6
12070.18ft: IN 44/12.9 OUT 47/12.8 M/U 3 PH 9.6
12074.67ft: ROTATING
12081.99ft: PVT Horn Disabled
12081.99ft: BIT DEPTH CHANGED TO 11033.0 FEET
12081.99ft: 021TGAS 01050117 SW0.30 HW30.00 - 94 days on
12081.99ft: BIT DEPTH CHANGED TO 1325.0 FEET
12081.99ft: PVT Horn Enabled
12081.99ft: PVT Horn Disabled
12081.99ft: PVT Horn Enabled
12081.99ft: BIT DEPTH CHANGED TO 11894.0 FEET
12081.99ft: PVT Horn Disabled
12081.99ft: ZWOB from DHC
12081.99ft: ZDIFF from DHC
12081.99ft: ZDIFF from DHC
12081.99ft: ZDIFF from DHC
12081.99ft: PVT Horn Enabled
12082.94ft: IN 44/12.9 OUT 47/12.8 M/U 3 PH 9.8
12082.94ft: RIG SERVICE
12082.94ft: S.P.R
12082.94ft: Connection at 12086.1

