

Steil Surveying Services, LLC

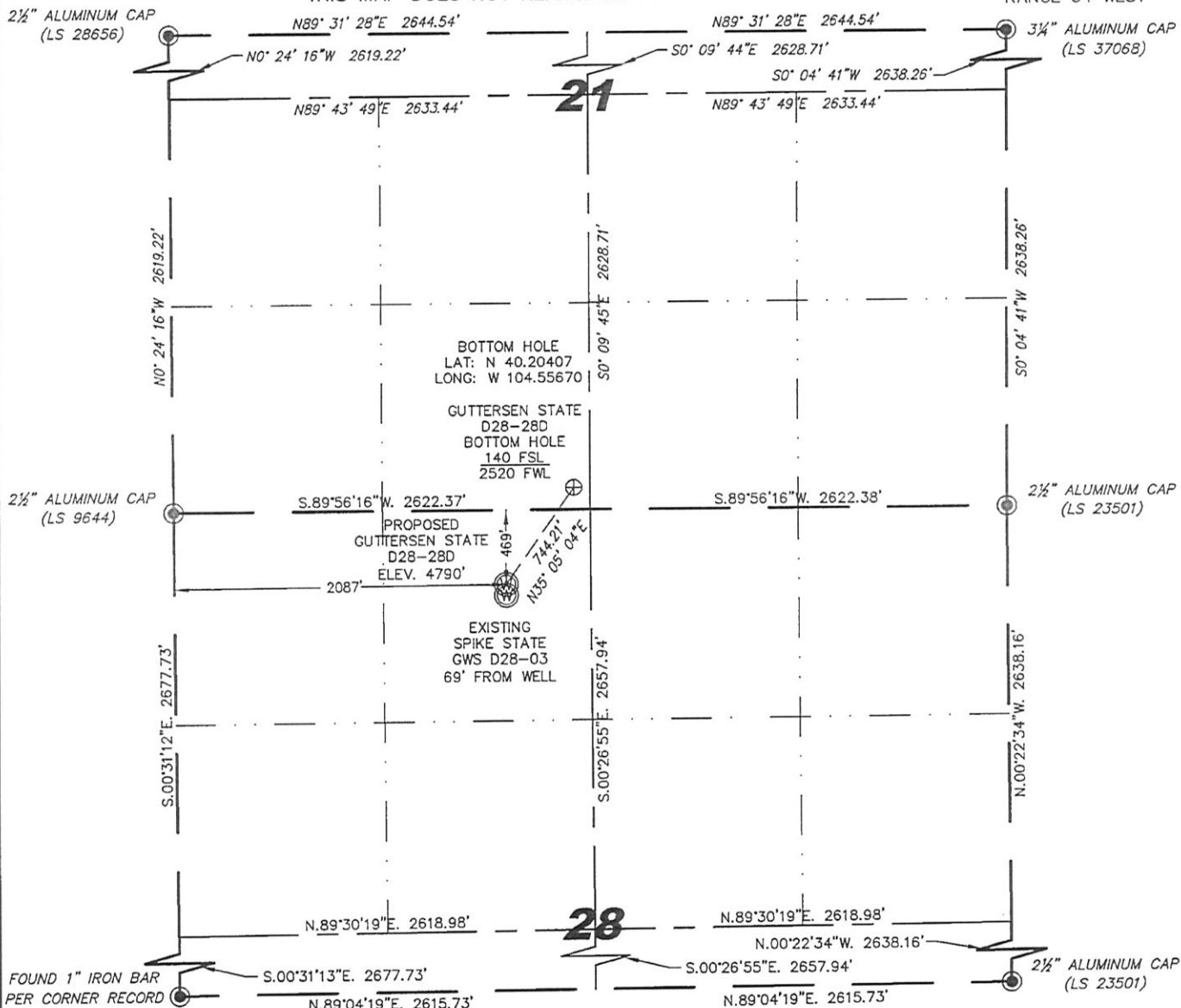
1102 West 19th Street P.O. BOX 2073

Cheyenne, Wyoming 82001

WELL LOCATION CERTIFICATE

THIS MAP DOES NOT REPRESENT A BOUNDARY SURVEY

SECTIONS 21 & 28
TOWNSHIP 3 NORTH
RANGE 64 WEST



IN ACCORDANCE WITH A REQUEST FROM BRIAN DEROSE - NOBLE ENERGY INC, STEIL SURVEYING SERVICES, LLC HAS DETERMINED THE LOCATION OF THE GUTTERSEN STATE D28-280 WELL TO BE 469' FNL, 2087' FWL, AS MEASURED AT NINETY (90) DEGREES FROM THE SECTION LINES, SECTION 28, TOWNSHIP 3 NORTH, RANGE 64 WEST, 6TH PRINCIPLE MERIDIAN, WELD COUNTY, COLORADO.

I HEREBY CERTIFY THAT THIS WELL LOCATION CERTIFICATE WAS PREPARED BY ME, OR UNDER MY DIRECT SUPERVISION, THAT THE FIELD WORK WAS COMPLETED ON 08/23/2011, FOR AND ON BEHALF OF NOBLE ENERGY INC, THAT IT IS NOT A LAND SURVEY PLAT OR AN IMPROVEMENT SURVEY PLAT, AND THAT IT IS NOT TO BE RELIED UPON FOR ESTABLISHMENT OF FENCE, BUILDING, OR OTHER FUTURE IMPROVEMENT LINES.

NOTES:

- 1) BASIS OF BEARINGS FOR THIS MAP ARE BASED UPON GPS OBSERVATIONS MADE ON 04/15/2011 BETWEEN MONUMENTS LOCATED AT THE SOUTHEAST SECTION CORNER AND THE NORTHEAST SECTION CORNER OF SAID SECTION AND WITH ALL BEARINGS SHOWN HEREON RELATIVE THERETO.
- 2) COORDINATES SHOWN ARE COLORADO STATE PLANE (NORTH ZONE) NAD 83.
- 3) ELEVATIONS ARE BASED UPON NGS OPUS SOLUTION NAVD 88 DATUM.
- 4) THE NEAREST EXISTING WELL IS: SPIKE STATE GWS D28-03, 69' SOUTH.
- 5) SEE LOCATION DRAWING FOR ALL IMPROVEMENTS WITHIN VISIBLE IMPROVEMENT LIMIT.
- 6) THE LOCATION FALLS IN PASTURE LAND.

NOTICE: According to Colorado law you MUST commence any legal action based upon any defect in this W.L.C. within three years after you first discover such defect. In no event may any action based upon any defect in this W.L.C. be commenced more than ten years from this sold date of the certification shown hereon.

LATITUDE & LONGITUDE (NAD 83 SURFACE HOLE):
LATITUDE: N 40.20241°
LONGITUDE: W 104.55825°
PDOP: 1.9
QUARTER-QUARTER: NE/4NW/4
NEAREST PROPERTY LINE: 469' NORTH

LEGEND

- FOUND SURVEY MONUMENT PER MONUMENT RECORD - EXCEPTIONS NOTED.
- (C) CALCULATED DIMENSION



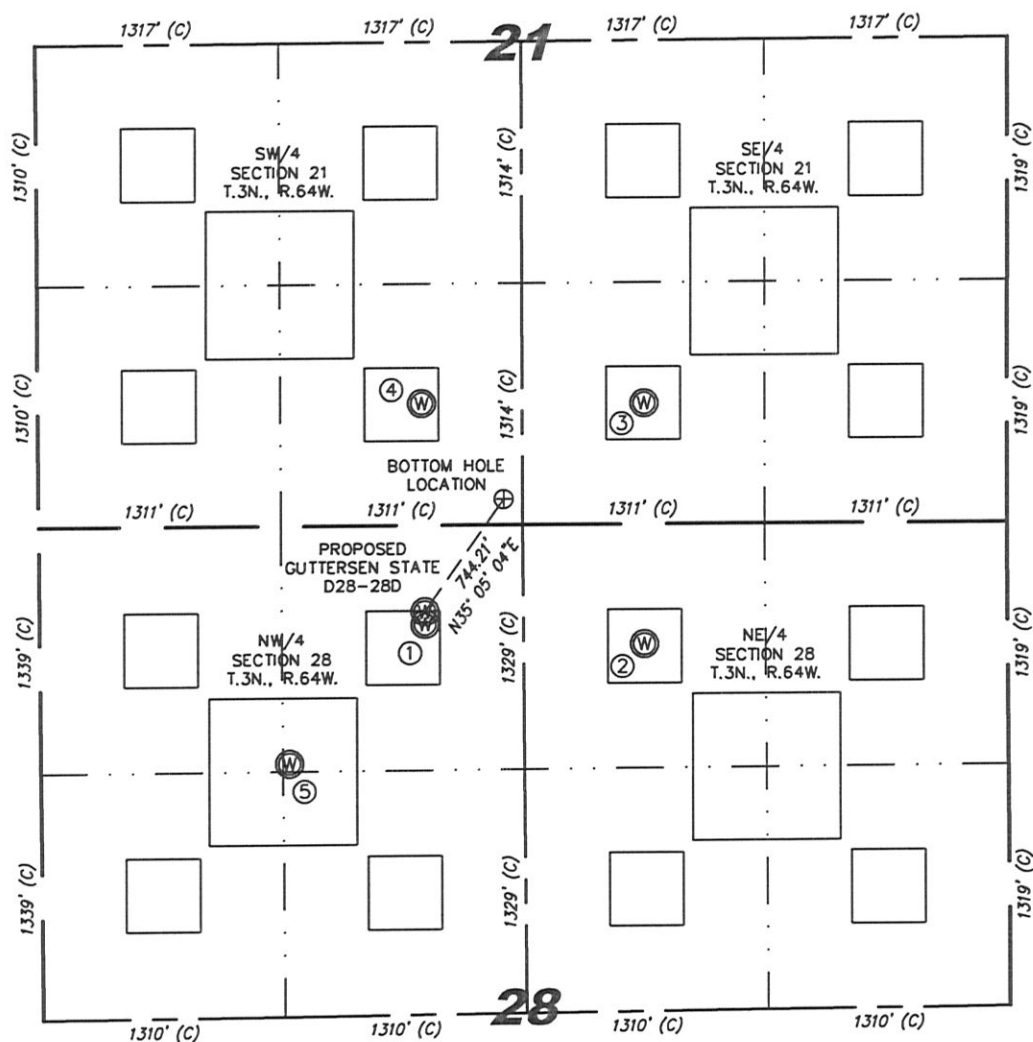
Completed 08/30/2011

David C. Holmes
Professional Land Surveyor Registration No. 32828
State of Colorado

JOB #: 11086

SKETCH - GUTTERSEN STATE D28-28D

SECTION 21 & 28
TOWNSHIP 3 NORTH
RANGE 64 WEST



①	②	③	④	⑤
SPIKE STATE GWS D28-03 NE/NW SEC. 28 537' FNL 2087' FWL EL 4791' N 40.20222 W 104.55825 PDOP 3.3	O'SH D28-2 NW/NE SEC. 28 652' FNL 1967' FEL EL 4814' N 40.20188 W 104.55400 PDOP 1.9	GUTTERSEN 34-21 SW/SE SEC. 21 657' FSL 1965' FEL EL 4828' N 40.20547 W 104.55395 PDOP 1.8	CASEY BLUE D21-14 SE/SW SEC. 21 662' FSL 2079' FWL EL 4818' N 40.20551 W 104.55827 PDOP 1.9	SPIKE STATE D28-19 NE/NW SEC. 28 1291' FNL 1346' FWL EL 4795' N 40.20017 W 104.56091 PDOP 1.9

NOTES:

- THIS SKETCH DOES NOT REPRESENT A BOUNDARY SURVEY.
- THE DATUM FOR THE LATITUDES AND LONGITUDES ON THIS SKETCH IS NAD83.



0 500

Scale: 1" = 500'