
BILL BARRETT CORPORATION E-BILL

**FEDERAL 14D-34-691
MAMM CREEK
Garfield County , Colorado**

Cement Surface Casing
30-Dec-2011

Post Job Summary

The Road to Excellence Starts with Safety

| | | | |
|--|--|-------------------------|------------------------|
| Sold To #: 343492 | Ship To #: 2896394 | Quote #: | Sales Order #: 9132786 |
| Customer: BILL BARRETT CORPORATION E-BILL | Customer Rep: Lauer, Casey | | |
| Well Name: FEDERAL | Well #: 14D-34-691 | API/UWI #: 05-045-20862 | |
| Field: MAMM CREEK | City (SAP): SILT | County/Parish: Garfield | State: Colorado |
| Lat: N 39.479 deg. OR N 39 deg. 28 min. 45.142 secs. | Long: W 107.553 deg. OR W -108 deg. 26 min. 48.318 secs. | | |
| Contractor: Pro Petro | Rig/Platform Name/Num: Pro Petro 1 | | |
| Job Purpose: Cement Surface Casing | | | |
| Well Type: Development Well | Job Type: Cement Surface Casing | | |
| Sales Person: FLING, MATTHEW | Srvc Supervisor: YOUNG, JEREMY | MBU ID Emp #: 418013 | |

Job Personnel

| HES Emp Name | Exp Hrs | Emp # | HES Emp Name | Exp Hrs | Emp # | HES Emp Name | Exp Hrs | Emp # |
|------------------------|---------|--------|-----------------|---------|--------|-----------------|---------|--------|
| KUKUS, CARLTON Dean | 10 | 458577 | PARKER, BRANDON | 10 | 503646 | YOUNG, JEREMY R | 10 | 418013 |

Equipment

| HES Unit # | Distance-1 way | HES Unit # | Distance-1 way | HES Unit # | Distance-1 way | HES Unit # | Distance-1 way |
|------------|----------------|------------|----------------|------------|----------------|------------|----------------|
| 10867423 | 60 mile | 10871245 | 60 mile | 10897887 | 60 mile | 11259881 | 60 mile |
| 11360881 | 60 mile | | | | | | |

Job Hours

| Date | On Location Hours | Operating Hours | Date | On Location Hours | Operating Hours | Date | On Location Hours | Operating Hours |
|------------|-------------------|-----------------|------------|-------------------|-----------------|------|-------------------|-----------------|
| 12/29/2011 | 7 | 0.5 | 12/30/2011 | 3 | 1.5 | | | |

TOTAL Total is the sum of each column separately

Job

| Formation Name | Job | Job Times | Date | Time | Time Zone |
|------------------------|-------------------|---------------|-----------------------|-------------|---------------------------|
| Formation Depth (MD) | Top | Bottom | Called Out | | |
| Form Type | BHST | On Location | 29 - Dec - 2011 | 17:00 | MST |
| Job depth MD | 867.9 ft | Job Depth TVD | 867.9 ft | Job Started | 30 - Dec - 2011 00:02 MST |
| Water Depth | Wk Ht Above Floor | Job Completed | 30 - Dec - 2011 01:06 | MST | |
| Perforation Depth (MD) | From | To | Departed Loc | | |

Well Data

| Description | New / Used | Max pressure psig | Size in | ID in | Weight lbm/ft | Thread | Grade | Top MD ft | Bottom MD ft | Top TVD ft | Bottom TVD ft |
|----------------|------------|-------------------|---------|-------|---------------|--------|-------|-----------|--------------|------------|---------------|
| OPEN HOLE | | | | 12.25 | | | | . | 890. | | |
| SURFACE CASING | Unknown | | 9.625 | 8.921 | 36. | | K-55 | . | 867.9 | | |

Sales/Rental/3rd Party (HES)

| Description | Qty | Qty uom | Depth | Supplier |
|---|-----|---------|-------|----------|
| R/A DENSOMETER W/CHART RECORDER, /JOB, ZI | 1 | JOB | | |
| ADC (AUTO DENSITY CTRL) SYS, /JOB, ZI | 1 | JOB | | |
| PORT. DATA ACQUIS. W/OPTICEM RT W/HES | 1 | EA | | |
| PLUG, CMTG, TOP, 9 5/8, HWE, 8.16 MIN/9.06 MA | 1 | EA | | |

Tools and Accessories

| Type | Size | Qty | Make | Depth | Type | Size | Qty | Make | Depth | Type | Size | Qty | Make |
|--------------|------|-----|------|-------|-------------|------|-----|------|-------|----------------|-------|-----|------|
| Guide Shoe | | | | | Packer | | | | | Top Plug | 9.625 | 1 | HES |
| Float Shoe | | | | | Bridge Plug | | | | | Bottom Plug | | | |
| Float Collar | | | | | Retainer | | | | | SSR plug set | | | |
| Insert Float | | | | | | | | | | Plug Container | 9.625 | 1 | HES |
| Stage Tool | | | | | | | | | | Centralizers | | | |

Miscellaneous Materials

| Gelling Agt | Conc | Surfactant | Conc | Acid Type | Qty | Conc | % |
|---------------|------|------------|------|-----------|------|------|---|
| Treatment Fld | Conc | Inhibitor | Conc | Sand Type | Size | Qty | |

Fluid Data

Stage/Plug #: 1

| Fluid # | Stage Type | Fluid Name | Qty | Qty uom | Mixing Density lbm/gal | Yield ft ³ /sk | Mix Fluid Gal/sk | Rate bbl/min | Total Mix Fluid Gal/sk |
|--|--------------|-------------------------------|-----------------|-----------------------------------|------------------------|---------------------------|------------------|--------------|------------------------|
| 1 | WATER SPACER | FRESH WATER | 20.00 | bbl | 8.34 | .0 | .0 | 4 | |
| 2 | VersaCem | VERSACEM (TM) SYSTEM (452010) | 125.0 | sacks | 12.3 | 2.38 | 13.77 | 5 | 13.77 |
| | 0.25 lbm | POLY-E-FLAKE (101216940) | | | | | | | |
| | 13.77 Gal | FRESH WATER | | | | | | | |
| 3 | SwiftCem | SWIFTCEM (TM) SYSTEM (452990) | 125.0 | sacks | 14.2 | 1.43 | 6.85 | 5 | 6.85 |
| | 0.25 lbm | POLY-E-FLAKE (101216940) | | | | | | | |
| | 6.85 Gal | FRESH WATER | | | | | | | |
| 4 | DISPLACEMENT | FRESH WATER | 63.70 | bbl | 8.33 | | | 5 | |
| Calculated Values | | Pressures | | Volumes | | | | | |
| Displacement | 63.7 | Shut In: Instant | | Lost Returns | NO | Cement Slurry | 84.8 | Pad | |
| Top Of Cement | SURFACE | 5 Min | | Cement Returns | 28 | Actual Displacement | 83.7 | Treatment | |
| Frac Gradient | | 15 Min | | Spacers | 20 | Load and Breakdown | | Total Job | 168.5 |
| Rates | | | | | | | | | |
| Circulating | | Mixing | 5 | Displacement | 5 | Avg. Job | 5 | | |
| Cement Left In Pipe | Amount | 43.4 ft | Reason | Shoe Joint | | | | | |
| Frac Ring # 1 @ | ID | | Frac ring # 2 @ | ID | | Frac Ring # 3 @ | ID | | Frac Ring # 4 @ |
| The Information Stated Herein Is Correct | | | | Customer Representative Signature | | | | | |

The Road to Excellence Starts with Safety

| | | | |
|---|---------------------------|---|-------------------------------|
| Sold To #: 343492 | Ship To #: 2896394 | Quote #: | Sales Order #: 9132786 |
| Customer: BILL BARRETT CORPORATION E-BILL | | Customer Rep: Lauer, Casey | |
| Well Name: FEDERAL | Well #: 14D-34-691 | API/UWI #: 05-045-20862 | |
| Field: MAMM CREEK | City (SAP): SILT | County/Parish: Garfield | State: Colorado |
| Legal Description: | | | |
| Lat: N 39.479 deg. OR N 39 deg. 28 min. 45.142 secs. | | Long: W 107.553 deg. OR W -108 deg. 26 min. 48.318 secs. | |
| Contractor: Pro Petro | | Rig/Platform Name/Num: Pro Petro 1 | |
| Job Purpose: Cement Surface Casing | | | Ticket Amount: |
| Well Type: Development Well | | Job Type: Cement Surface Casing | |
| Sales Person: FLING, MATTHEW | | Srvc Supervisor: YOUNG, JEREMY | MBU ID Emp #: 418013 |

| Activity Description | Date/Time | Cht # | Rate bbl/min | Volume bbl | | Pressure psig | | Comments |
|---------------------------------------|------------------|-------|--------------|------------|-------|---------------|--------|---|
| | | | | Stage | Total | Tubing | Casing | |
| Arrive At Loc | 12/29/2011 17:00 | | | | | | | CREW ALREADY ON LOCATION FROM PREVIOUS JOB. |
| Assessment Of Location Safety Meeting | 12/29/2011 23:10 | | | | | | | WITH ALL HES PERSONNEL |
| Other | 12/29/2011 23:15 | | | | | | | SPOT EQUIPMENT |
| Pre-Rig Up Safety Meeting | 12/29/2011 23:20 | | | | | | | WITH ALL HES PERSONNEL |
| Rig-Up Equipment | 12/29/2011 23:30 | | | | | | | |
| Pre-Job Safety Meeting | 12/29/2011 23:50 | | | | | | | WITH ALL PERSONNEL ON LOCATION |
| Start Job | 12/30/2011 00:02 | | | | | | | TD 890 FT, TP 867.88 FT, SHOE 43.39 FT, HOLE 12 1/4 IN, HOLE DRILLED WITH AIR, CSG 9 5/8 IN 36 LB/FT K-55 |
| Other | 12/30/2011 00:02 | | 2 | 2 | | | 12.0 | FILL LINES WITH FRESH WATER |
| Test Lines | 12/30/2011 00:04 | | | | | | | TEST LINES TO 2600 PSI. PRESSURE HOLDING |
| Pump Spacer 1 | 12/30/2011 00:14 | | 4 | 20 | | | 44.0 | FRESH WATER |
| Pump Lead Cement | 12/30/2011 00:19 | | 5 | 53 | | | 105.0 | 125 SKS AT 12.3 PPG, 2.38 FT3/SK, 13.77 GAL/SK |
| Pump Tail Cement | 12/30/2011 00:31 | | 5 | 31.8 | | | 166.0 | 125 SKS AT 14.2 PPG, 1.43 FT3/SK, 6.85 GAL/SK |
| Shutdown | 12/30/2011 00:37 | | | | | | | |
| Drop Top Plug | 12/30/2011 00:37 | | | | | | | PLUG LAUNCHED |

| Activity Description | Date/Time | Cht # | Rate bbl/min | Volume bbl | | Pressure psig | | Comments |
|-----------------------------|------------------|-------|--------------|------------|-------|---------------|--------|--|
| | | | | Stage | Total | Tubing | Casing | |
| Pump Displacement | 12/30/2011 00:38 | | 5 | 53.7 | | | 266.0 | FRESH WATER |
| Slow Rate | 12/30/2011 00:49 | | 2 | 10 | | | 230.0 | SLOW RATE 10 BBLS PRIOR TO CALCULATED DISPLACEMENT |
| Bump Plug | 12/30/2011 00:54 | | 2 | | 63.7 | | 810.0 | PLUG BUMPED |
| Check Floats | 12/30/2011 01:00 | | | | | | | FLOATS NOT HOLDING. RETURNED 1.75 BBL H2O TO PUMP |
| Bump Plug | 12/30/2011 01:03 | | 1 | 1.75 | 63.7 | | 1100.0 | REBUMP PLUG |
| Check Floats | 12/30/2011 01:05 | | | | | | | FLOATS HOLDING. RETURNED 0.5 BBL H2O TO PUMP. |
| End Job | 12/30/2011 01:06 | | | | | | | PIPE WAS STATIC DURING JOB. CIRCULATION CAME AT START OF DISPLACEMENT. HES RETURNED 28 BBL CEMENT TO SURFACE |
| Pre-Rig Down Safety Meeting | 12/30/2011 01:10 | | | | | | | WITH ALL HES PERSONNEL |
| Rig-Down Equipment | 12/30/2011 01:15 | | | | | | | |
| Comment | 12/30/2011 14:55 | | | | | | | CREW STAYED ON LOCATION FOR NEXT JOB |
| Comment | 12/30/2011 14:55 | | | | | | | THANK YOU FOR USING HALLIBURTON CEMENT DEPARTMENT. JEREMY YOUNG AND CREW. |

HALLIBURTON

Water Analysis Report

Company: BILL BARRETT

Submitted by: JEREMY YOUNG

Attention: LAB

Lease FEDERAL

Well # 14D-34-691

Date: 12/29/2011

Date Rec.:

S.O.# 9132786

Job Type: SURFACE

| | | |
|-----------------------------|--------------|-------------------------|
| Specific Gravity | <i>MAX</i> | 1 |
| pH | <i>8</i> | 7 |
| Potassium (K) | <i>5000</i> | 250 Mg / L |
| Calcium (Ca) | <i>500</i> | 120 Mg / L |
| Iron (FE2) | <i>300</i> | 0 Mg / L |
| Chlorides (Cl) | <i>3000</i> | 0 Mg / L |
| Sulfates (SO ₄) | <i>1500</i> | UNDER 200 Mg / L |
| Chlorine (Cl ₂) | | 0 Mg / L |
| Temp | <i>40-80</i> | 40 Deg |
| Total Dissolved Solids | | 420 Mg / L |

Respectfully: JEREMY YOUNG

Title: CEMENTING SUPERVISOR

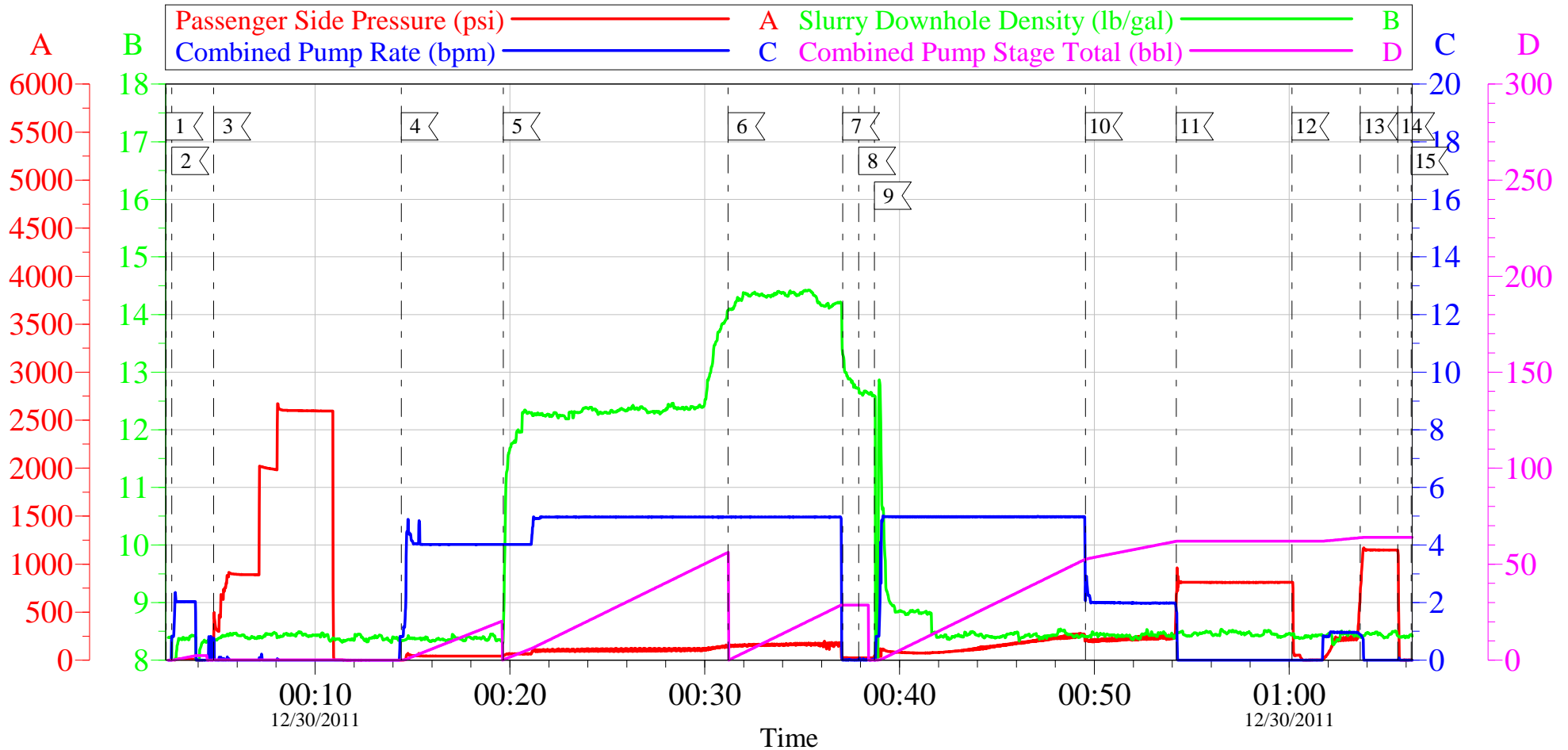
Location: Grand Junction, CO

NOTICE:

This report is limited to the described sample tested. Any person using or relying on this report agrees that Halliburton shall not be liable for any loss or damage whether due to act or omission resulting from such report or its use.

BILL BARRETT - FEDERAL 14D-34-691

9 5/8 SURFACE



Local Event Log

| | | | | | |
|-------------------|----------|--------------------|----------|---------------------|----------|
| 1 START JOB | 00:02:21 | 2 FILL LINES | 00:02:39 | 3 TEST LINES | 00:04:48 |
| 4 PUMP H2O SPACER | 00:14:25 | 5 PUMP LEAD CEMENT | 00:19:39 | 6 PUMP TAIL CEMENT | 00:31:12 |
| 7 SHUTDOWN | 00:37:05 | 8 DROP TOP PLUG | 00:37:54 | 9 PUMP DISPLACEMENT | 00:38:43 |
| 10 SLOW RATE | 00:49:33 | 11 BUMP PLUG | 00:54:13 | 12 CHECK FLOATS | 01:00:09 |
| 13 REBUMP PLUG | 01:03:39 | 14 CHECK FLOATS | 01:05:34 | 15 END JOB | 01:06:16 |

Customer: BILL BARRETT
Well Description: FEDERAL 14D-34-691
Company Rep: CASER LAUER

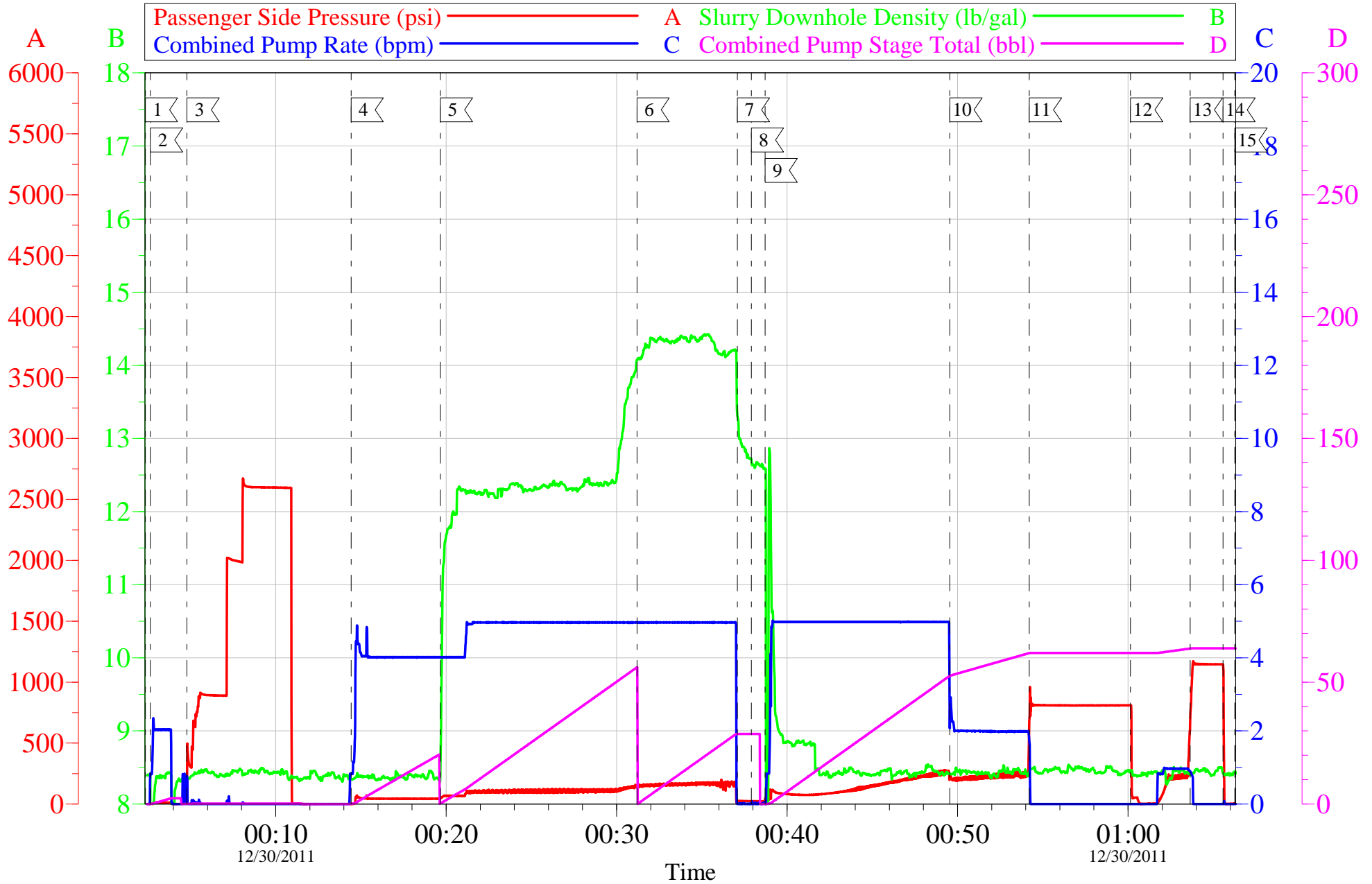
Job Date: 30-Dec-2011
Job Type: SURFACE
Cement Supervisor: JEREMY YOUNG

Sales Order #: 9132786
ADC Used: YES
Elite #8: CARL KUKUS

OptiCem v6.4.10
30-Dec-11 03:08

BILL BARRETT - FEDERAL 14D-34-691

9 5/8 SURFACE



| | | |
|--------------------------------------|---------------------------------|------------------------|
| Customer: BILL BARRETT | Job Date: 30-Dec-2011 | Sales Order #: 9132786 |
| Well Description: FEDERAL 14D-34-691 | Job Type: SURFACE | ADC Used: YES |
| Company Rep: CASER LAUER | Cement Supervisor: JEREMY YOUNG | Elite #8: CARL KUKUS |

OptiCem v6.4.10
30-Dec-11 03:09