

T2N, R103W, 6th P.M.

CHEVRON U.S.A., INC.

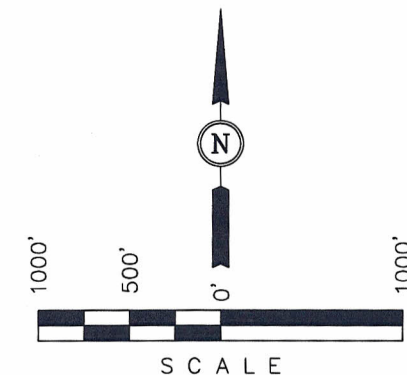
Well location, EMERALD #97X, located as shown in the SW 1/4 NE 1/4 of Section 26, T2N, R103W, 6th P.M., Rio Blanco County, Colorado.

### BASIS OF ELEVATION

GOLF TRIANGULATION STATION LOCATED IN THE SE 1/4 OF SECTION 30, T2N, R102W, 6th P.M., TAKEN FROM THE BANTY POINT QUADRANGLE, COLORADO, RIO BLANCO COUNTY, 7.5 MINUTE QUAD. (TOPOGRAPHIC MAP) PUBLISHED BY THE UNITED STATES DEPARTMENT OF THE INTERIOR, GEOLOGICAL SURVEY. SAID ELEVATION IS MARKED AS BEING 5311 FEET.

### BASIS OF BEARINGS

BASIS OF BEARINGS IS A G.P.S. OBSERVATION.



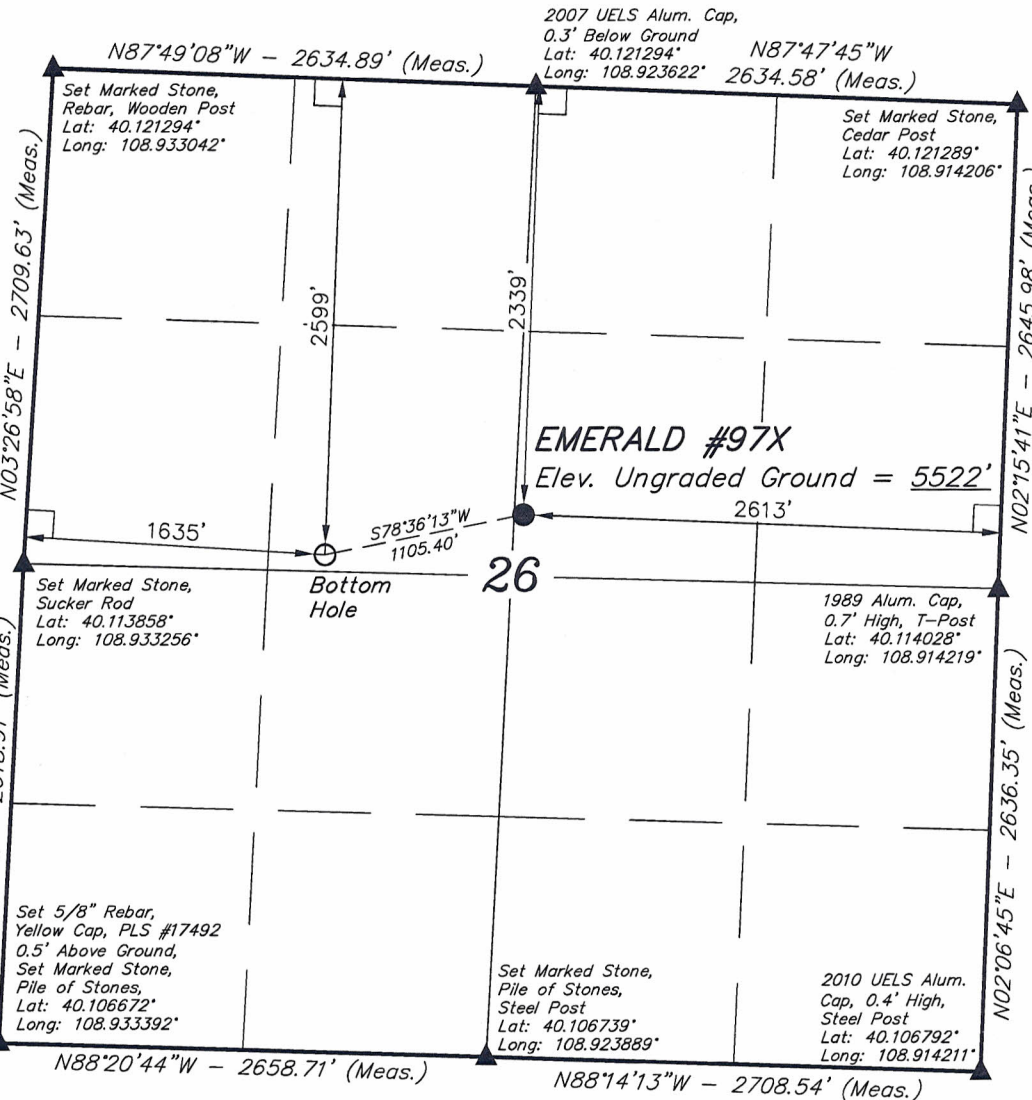
### CERTIFICATE

THIS IS TO CERTIFY THAT THE ABOVE PLAT WAS PREPARED FROM FIELD NOTES OF ACTUAL SURVEYS MADE BY ME OR UNDER MY SUPERVISION AND THAT THE SAME ARE TRUE AND CORRECT TO THE BEST OF MY KNOWLEDGE AND BELIEF.

REGISTERED LAND SURVEYOR  
REGISTRATION NO. 17492  
STATE OF COLORADO  
02-01-11

REVISED: 12-01-11

**UINTAH ENGINEERING & LAND SURVEYING**  
85 SOUTH 200 EAST - VERNAL, UTAH 84078  
(435) 789-1017



NOTE:  
SEE ADDENDUM TO LEGAL PLAT FOR  
EXISTING IMPROVEMENTS WITHIN 400'  
OF THE PROPOSED WELL DISTURBANCE.

### LEGEND:

- └─┘ = 90° SYMBOL
- = PROPOSED WELL HEAD.
- ▲ = SECTION CORNERS LOCATED.

PDOP = 1.2

NAD 83 (TARGET BOTTOM HOLE)	NAD 83 (SURFACE LOCATION)
LATITUDE = 40°06'50.98" (40.114161)	LATITUDE = 40°06'53.54" (40.114872)
LONGITUDE = 108°55'38.64" (108.927400)	LONGITUDE = 108°55'24.81" (108.923558)
NAD 27 (TARGET BOTTOM HOLE)	NAD 27 (SURFACE LOCATION)
LATITUDE = 40°06'51.08" (40.114189)	LATITUDE = 40°06'53.64" (40.114900)
LONGITUDE = 108°55'36.24" (108.926733)	LONGITUDE = 108°55'22.41" (108.922892)

SCALE 1" = 1000'	DATE SURVEYED: 09-30-11	DATE DRAWN: 11-10-11
PARTY J.F. K.P. S.B.	REFERENCES G.L.O. PLAT	
WEATHER COLD	FILE CHEVRON U.S.A., INC.	