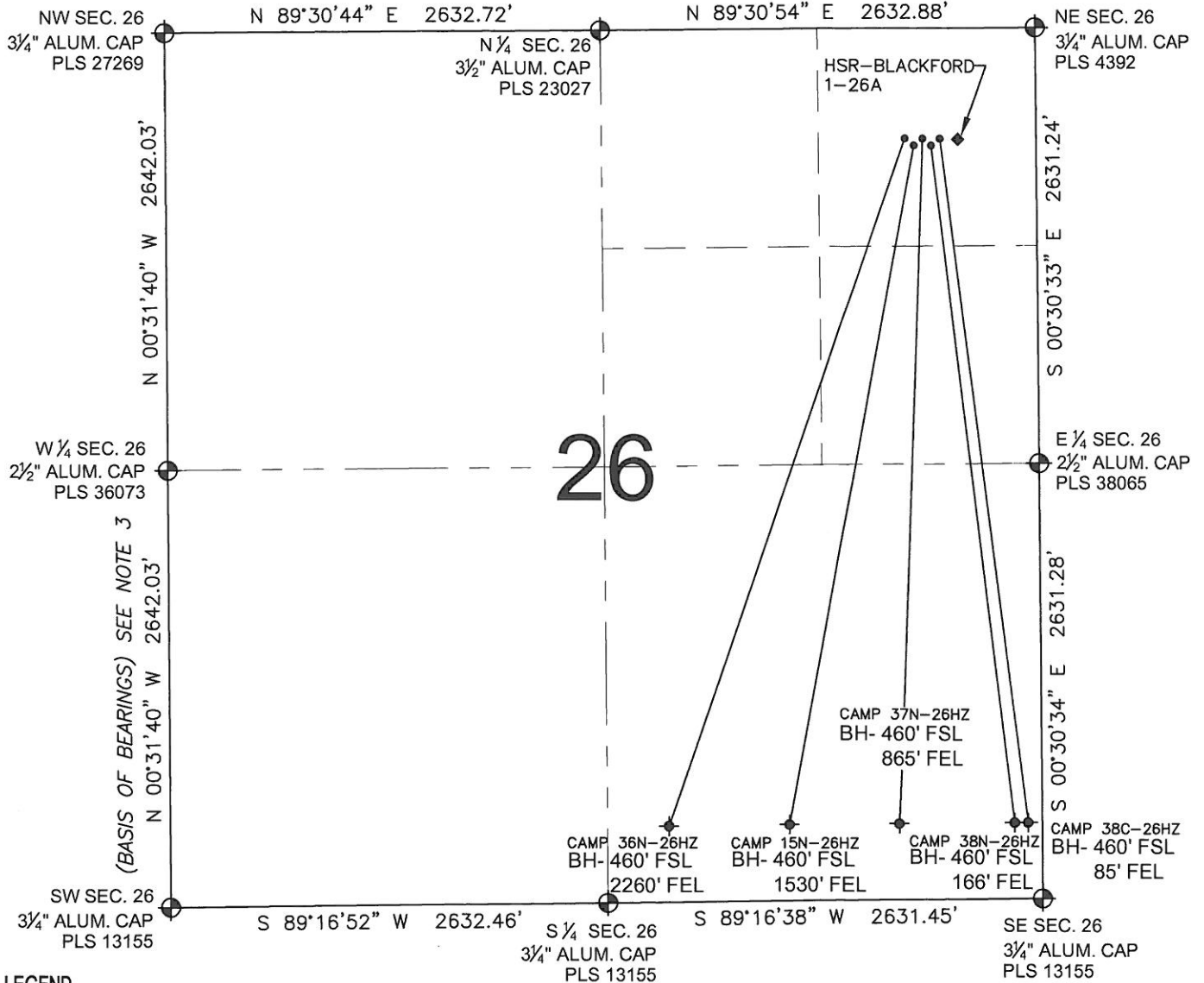


PAD DRAWING: CAMP 5 PAD

SECTION 26, TOWNSHIP 3 NORTH, RANGE 66 WEST, 6TH P.M.



LEGEND

- = EXISTING MONUMENT
- ⊕ = BOTTOM HOLE
- BH= BOTTOM HOLE
- ⊙ = PROPOSED WELL
- ⊕ = EXISTING WELL

NOTES:

- THIS FIELD SURVEY CONFORMS TO THE MINIMUM STANDARDS SET BY THE C.O.G.C.C., RULE NO. 215
- HORIZONTAL POSITIONS AND ORTHOMETRIC ELEVATIONS SHOWN AT THE WELL HEAD, ARE BASED ON GPS-RTK POSITIONS DERIVED FROM MINIMUM 2-HOUR STATIC OBSERVATIONS CORRECTED BY THE NATIONAL GEODETIC SURVEY ONLINE POSITIONING USER SERVICE, O.P.U.S. DATUM: HORIZONTAL = NAD83/2007, VERTICAL = NAVD88
- THE BASIS OF BEARINGS ARE STATE PLANE COORDINATE SYSTEM GRID BEARINGS SHOWN HEREON BETWEEN THE DESCRIBED THE MONUMENTS SHOWN HEREON.
- GRID DISTANCES ARE SHOWN, AS MEASURED IN THE FIELD, WITH TIES TO WELLS MEASURED PERPENDICULAR TO SECTION LINES.

NOTES:

- CAMP 38C-26HZ TO BE AT 667' FNL, 658' FEL.
- BOTTOM HOLE AT 460' FSL & 85' FEL.
- CAMP 38N-26HZ TO BE AT 677' FNL, 677' FEL.
- BOTTOM HOLE AT 460' FSL & 166' FEL.
- CAMP 37N-26HZ TO BE AT 667' FNL, 696' FEL.
- BOTTOM HOLE AT 460' FSL & 865' FEL.
- CAMP 15N-26HZ TO BE AT 677' FNL, 715' FEL.
- BOTTOM HOLE AT 460' FSL & 1530' FEL.
- CAMP 36N-26HZ TO BE AT 667' FNL, 733' FEL.
- BOTTOM HOLE AT 460' FSL & 2260' FEL.
- HSR-BLACKFORD 1-26A TO BE AT 667' FNL, 611' FEL.

PREPARED BY:

PFS

Petroleum Field Services, LLC
1801 W. 13th Ave.
Denver, CO 80204



KERR-MCGEE OIL & GAS ONSHORE LP

FIELD DATE:
11-11-11

DRAWING DATE:
11-16-11

BY:
SMF

PAD NAME:
CAMP 5 PAD

SURFACE LOCATION:

WELD COUNTY, COLORADO
NE 1/4 NE 1/4, SEC. 26, T3N, R66W, 6TH P.M.

