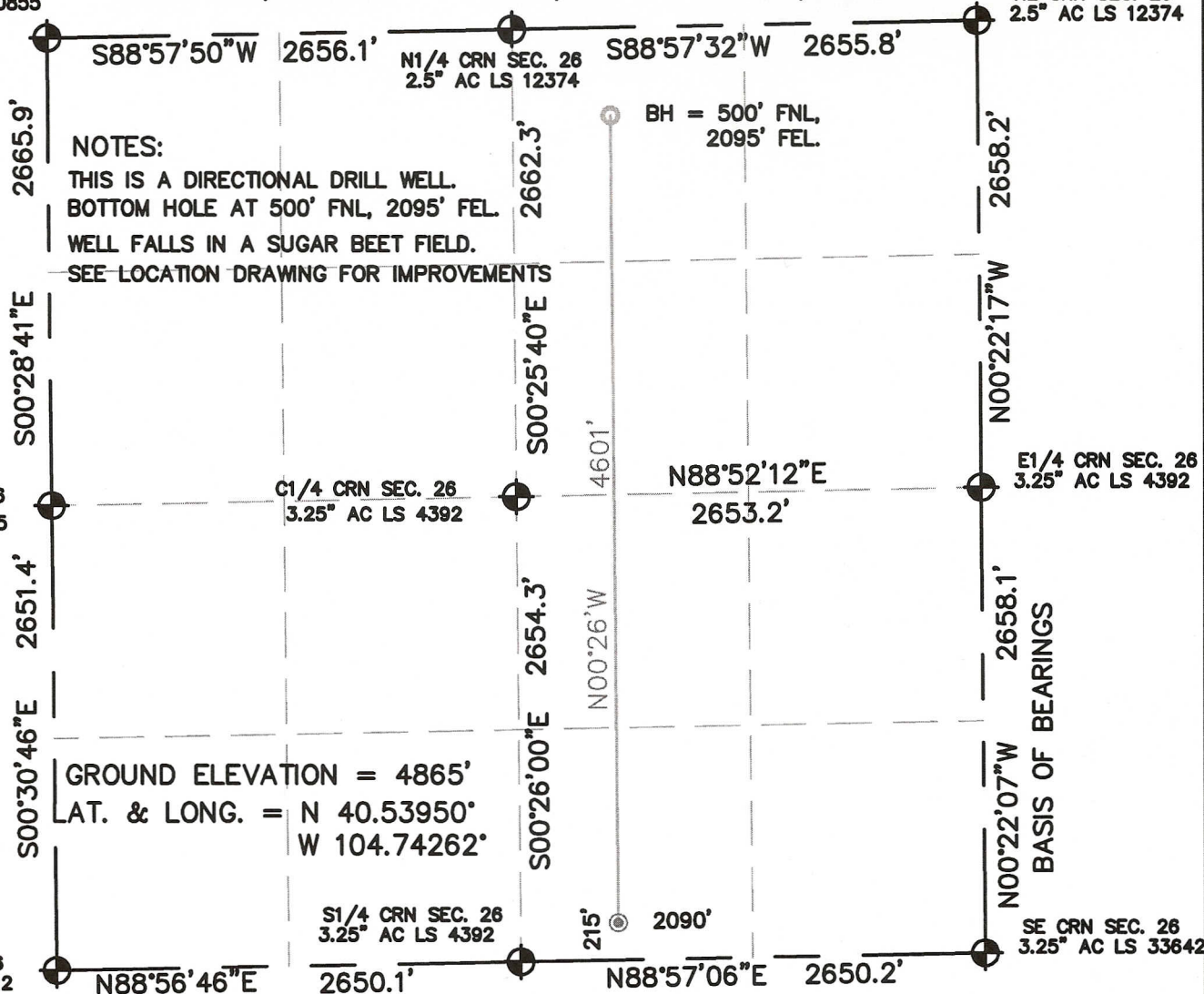


WELL LOCATION CERTIFICATE

NW CRN SEC. 26
3.25" AC LS 10855

SECTION 26, TOWNSHIP 7 NORTH, RANGE 66 WEST, 6TH P.M.

NE CRN SEC. 26
2.5" AC LS 12374

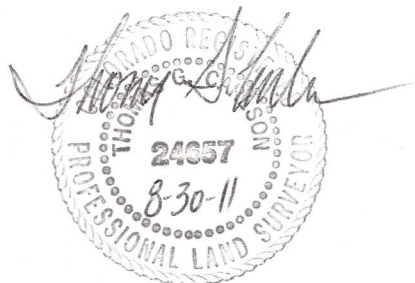


NOTES:

THIS IS A DIRECTIONAL DRILL WELL.
BOTTOM HOLE AT 500' FNL, 2095' FEL.
WELL FALLS IN A SUGAR BEET FIELD.
SEE LOCATION DRAWING FOR IMPROVEMENTS

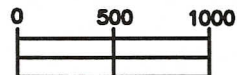
GROUND ELEVATION = 4865'
LAT. & LONG. = N 40.53950°
W 104.74262°

I HEREBY STATE TO PERTOLEUM DEV. CORP. THAT THE SURFACE LOCATION OF THE WELL LEFFLER 34-26H IS LOCATED 215' FSL & 2090' FEL, SEC. 26, T7N, R66W, 6PM.



LEGEND

- = FOUND MONUMENT
- = PROPOSED WELL
- = BOTTOM HOLE



SCALE 1" = 1000'

ELEVATION SOURCE = USGS 7.5' QUAD.MAP CONTOURS
NGVD 1929 DATUM.

LAT. & LONG. ARE DIFFERENTIALLY CORRECTED (NAD'83)
USING (DGPS) WITH A (PDOP) VALUE OF 1.9.

THOMAS G. CARLSON, PLS 24657
HORSESHOE SURVEYING, LLC

SHOWN DISTANCES ARE FIELD MEASURED - EXTERIOR SECTION LINES
ARE DRAWN TO SCALE (BEST APPROX. OR FOUND MONUMENT).

THIS IS NOT A MONUMENTED BOUNDARY SURVEY, IT IS ONLY A
DRAWING INTENDED TO DEPICT THE WELL LOCATION TO SECTION LINES.

DISTANCES TO WELL SHOWN PERPENDICULAR
TO SECTION LINES.

PREPARED BY:		HORSESHOE SURVEYING, LLC PO BOX 150458 LAKEWOOD, CO 80215 (720)872-0196		WELL NAME: LEFFLER 34-26H	
DRAWING DATE: 8-30-11				LOCATION: WELD COUNTY, CO SE1/4, SEC. 26, T7N, R66W, 6TH P.M.	
FIELD DATE: 8-27-11	BY: TGC	CHKD:		JOB NO.	SHEET NO. 1 OF 1