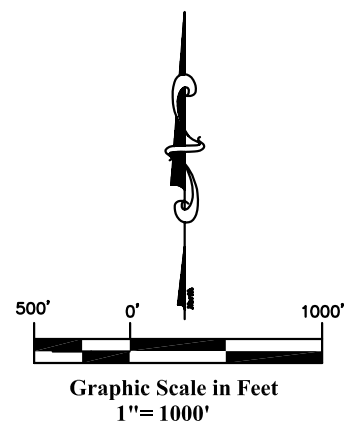
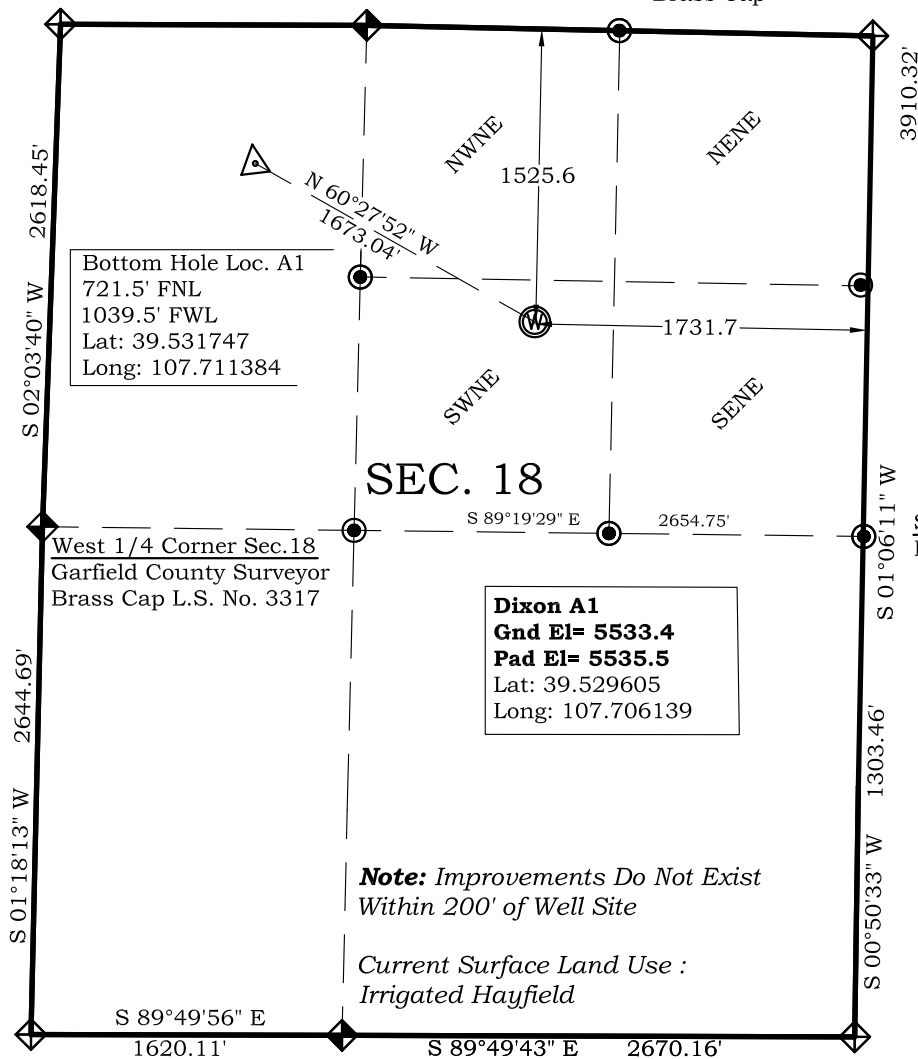


Northwest Corner Sec. 18
Aluminum Cap L.S. No. 28862

North $\frac{1}{4}$ Corner Sec. 18
Brass Cap L.S. No. 15846

Northeast Corner Sec.18
Garfield County Surveyor
Brass Cap

Well Location Plat Dixon Well A1



South $\frac{1}{16}$ Corner Sec.18 /17
Brass Cap L.S. No.15846

Legend

- Field Surveyed Section Corner
- Field Surveyed Quarter Corner
- Calculated Section Corner Location
- Field Surveyed $\frac{1}{6}$ Corner

DIXON A PAD

WELL A1

1526' FNL

1732' FEL

WGS 84

LATITUDE

39.529605

LONGITUDE

107.706139

UTM 13 NORTH

NAD 1983

NORTHING

14366924.9

EASTING

877330.8

Southwest Corner Sec. 18
Stone in Place

South $\frac{1}{4}$ Corner Sec.18
Garfield County Surveyor
Brass Cap L.S. No.14111

Southeast Corner Sec.18
Aluminum Cap L.S. No.
31944

Prepared For Antero Resources
Proposed Dixon A1 Well Situate in The SW1/4NE1/4 Section
18, Township 6 South, Range 92 West of the 6 th. Principal
Meridian, County of Garfield, State of Colorado

SURVEYOR'S CERTIFICATE

I, SCOTT E. AIBNER, A REGISTERED LAND SURVEYOR, LICENSED UNDER THE LAWS OF THE STATE OF COLORADO DO HEREBY CERTIFY THAT THE SURVEY SHOWN HEREON WAS PREPARED BY RIVER VALLEY SURVEY, INC., FOR ANTERO RESOURCES, BY ME OR UNDER MY DIRECT SUPERVISION AND THAT THIS PLAT IS A TRUE REPRESENTATION THEREOF.

BY: 
SCOTT E. AIBNER, COLORADO REG. NO. 31143

Notes:

- 1.) LATITUDE AND LONGITUDE COORDINATES ARE DIFFERENTIALLY CORRECTED AND BASED ON PUBLISHED NGS CONTROL STATION "WDP-5".
- 2.) ELEVATIONS ARE BASED ON NAVD OF 1929.
- 3.) ALL BOTTOM AND TOP HOLE LOCATIONS ARE MEASURED 90 DEGREES FROM SECTION LINE.
- 4.) USGS QUADRANGLE MAP "SILT CO".
- 5.) CURRENT SURFACE LAND USE: OPEN RANGELAND
- 6.) PDOP AT THE TIME OF LOCATION OF SURFACE WELL = 1.2
- 7.) BOTTOM HOLE DISTANCE TO NEAREST LEASE LINE IS 500.3'



River Valley Survey, Inc.
110 East 3rd. Street, Suite 207
Rifle, Colorado 81650
Ph: 970-379-7846

Project: Dixon A Pad

Proj. No. 06001-07A

Field Date: 05-17-07

Scale: 1"= 1000'

Date: 08-01-07

Sheet: 1 of 7

Well Location Plat
Prepared For Antero Resources

Situate In:
SW1/4NE1/4 Section 18, T6S., R. 92 W.
of the 6th P.M., Garfield County,
Colorado

