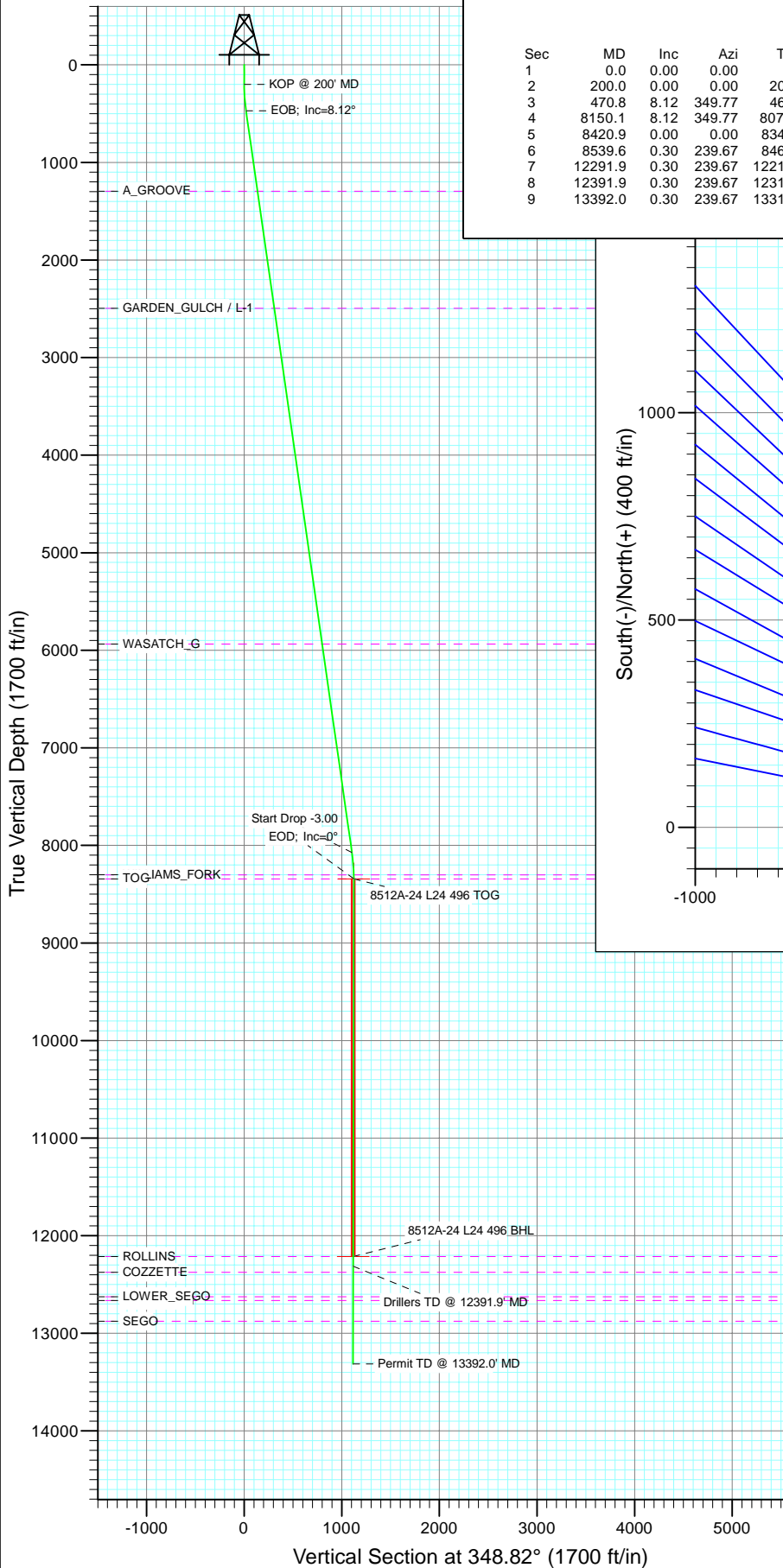
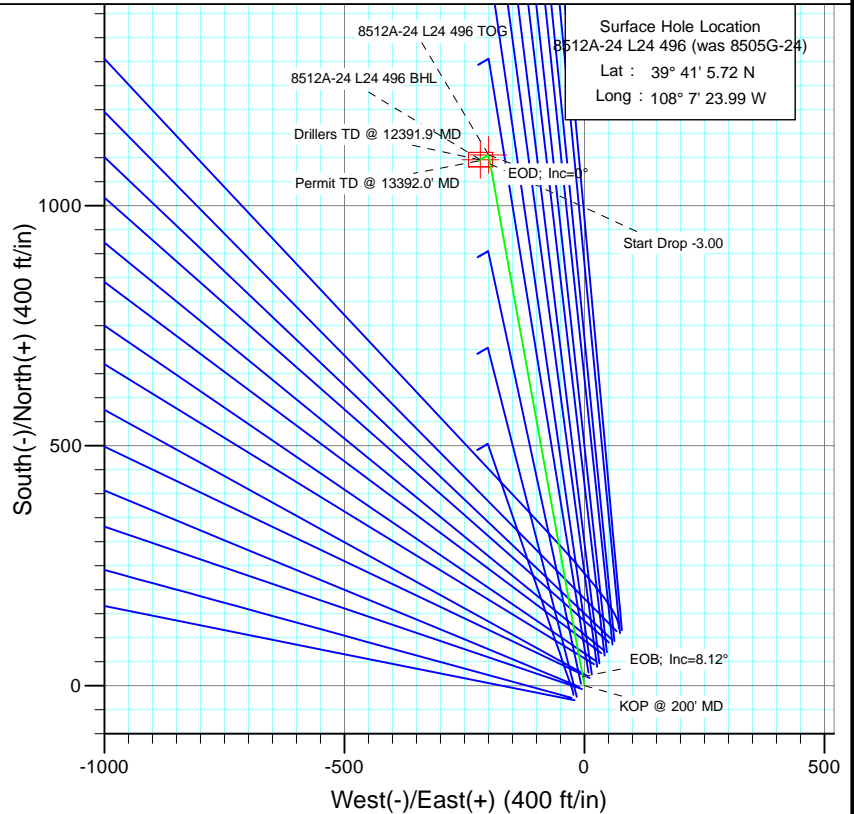




Project: Story Gulch
Site: L24 496
Well: 8512A-24 L24 496 (was 8505G-24)
Wellbore: DD
Design: Plan #2



SECTION DETAILS										
Sec	MD	Inc	Azi	TVD	+N/-S	+E/-W	Dleg	TFace	VSect	Target
1	0.0	0.00	0.00	0.0	0.0	0.0	0.00	0.00	0.0	
2	200.0	0.00	0.00	200.0	0.0	0.0	0.00	0.00	0.0	
3	470.8	8.12	349.77	469.9	18.9	-3.4	3.00	349.77	19.2	
4	8150.1	8.12	349.77	8072.1	1086.9	-196.1	0.00	0.00	1104.3	
5	8420.9	0.00	0.00	8342.0	1105.8	-199.5	3.00	180.00	1123.5	8512A-24 L24 496 TOG
6	8539.6	0.30	239.67	8460.7	1105.6	-199.8	0.25	239.67	1123.4	
7	12291.9	0.30	239.67	12213.0	1095.8	-216.5	0.00	0.00	1117.0	8512A-24 L24 496 BHL
8	12391.9	0.30	239.67	12313.0	1095.6	-217.0	0.00	0.00	1116.9	
9	13392.0	0.30	239.67	13313.0	1093.0	-221.5	0.00	0.00	1115.2	



Azimuths to True North
Magnetic North: 10.44°

Magnetic Field
Strength: 52326.7snT
Dip Angle: 65.87°
Date: 5/16/2011
Model: IGRF2010

FORMATION TOP DETAILS

TVDPATH	MDPATH	FORMATION
1295.0	1304.3	A_GROOVE
2495.0	2516.4	GARDEN_GULCH / L-1
5936.0	5992.3	WASATCH_G
8302.0	8380.9	WILLIAMS_FORK
8342.0	8420.9	TOG
12213.0	12291.9	ROLLINS
12376.0	12454.9	COZZETTE
12625.0	12704.0	LOWER_SEGO
12665.0	12744.0	CORCORAN
12877.0	12956.0	SEGO

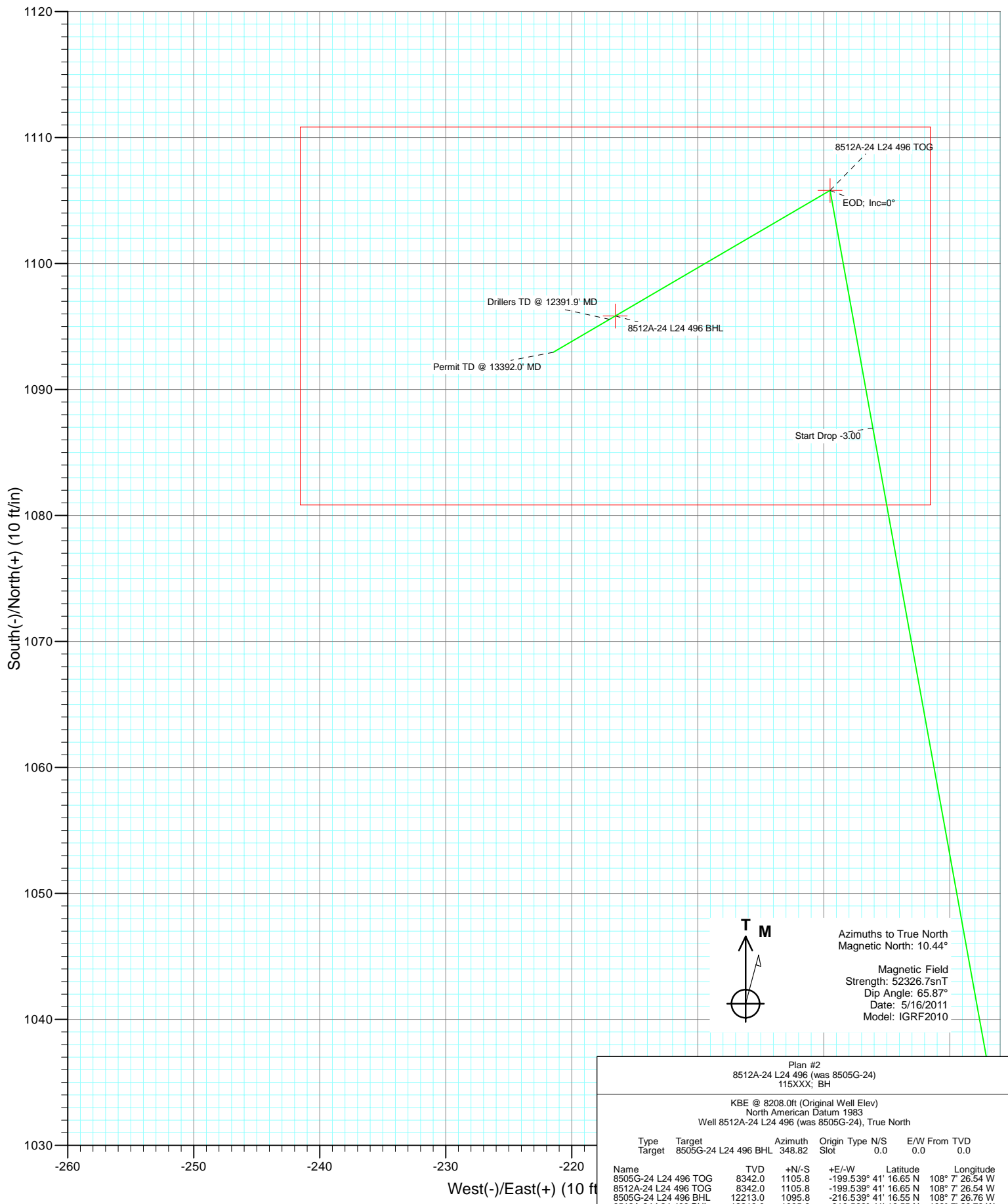
Plan #2
8512A-24 L24 496 (was 8505G-24)
115XXX; BH

KBE @ 8208.0ft (Original Well Elev)
North American Datum 1983
Well 8512A-24 L24 496 (was 8505G-24), True North

Type	Target	Azimuth	Origin	Type	N/S	E/W	From	TVD
Name	8505G-24 L24 496 BHL	348.82	Slot		0.0	0.0		0.0
8512A-24 L24 496 TOG	8342.0	1105.8	-199.539° 41' 16.65 N	108° 7' 26.54 W				
8512A-24 L24 496 BHL	12213.0	1095.8	-216.539° 41' 16.55 N	108° 7' 26.76 W				



Project: Story Gulch
Site: L24 496
Well: 8512A-24 L24 496 (was 8505G-24)
Wellbore: DD
Design: Plan #2



Cathedral Energy Services

Planning Report

Database:	EDM 5000.1 US Multi Users DB	Local Co-ordinate Reference:	Well 8512A-24 L24 496 (was 8505G-24)
Company:	EnCana Oil & Gas (USA) Inc	TVD Reference:	KBE @ 8208.0ft (Original Well Elev)
Project:	Story Gulch	MD Reference:	KBE @ 8208.0ft (Original Well Elev)
Site:	L24 496	North Reference:	True
Well:	8512A-24 L24 496 (was 8505G-24)	Survey Calculation Method:	Minimum Curvature
Wellbore:	DD		
Design:	Plan #2		

Project	Story Gulch		
Map System:	US State Plane 1983	System Datum:	Mean Sea Level
Geo Datum:	North American Datum 1983		
Map Zone:	Colorado Central Zone		

Site		L24 496			
Site Position:		Northing:	1,685,024.52 ft	Latitude:	39° 41' 5.72 N
From:	Lat/Long	Easting:	2,261,789.15 ft	Longitude:	108° 7' 23.99 W
Position Uncertainty:	0.0 ft	Slot Radius:	13.200 in	Grid Convergence:	-1.65 °

Well	8512A-24 L24 496 (was 8505G-24)					
Well Position	+N/-S	0.0 ft	Northing:	1,685,024.51 ft	Latitude:	39° 41' 5.72 N
	+E/-W	0.0 ft	Easting:	2,261,789.15 ft	Longitude:	108° 7' 23.99 W
Position Uncertainty		0.0 ft	Wellhead Elevation:	ft	Ground Level:	8,193.0 ft

Wellbore	DD				
Magnetics	Model Name	Sample Date	Declination (°)	Dip Angle (°)	Field Strength (nT)
	IGRF2010	5/16/2011	10.44	65.87	52,327

Design	Plan #2			
Audit Notes:				
Version:	Phase:	PLAN	Tie On Depth:	0.0
Vertical Section:	Depth From (TVD) (ft)	+N/-S (ft)	+E/-W (ft)	Direction (°)
	0.0	0.0	0.0	348.82

Plan Sections										
Measured Depth (ft)	Inclination (°)	Azimuth (°)	Vertical Depth (ft)	+N/-S (ft)	+E/-W (ft)	Dogleg Rate (°/100ft)	Build Rate (°/100ft)	Turn Rate (°/100ft)	TFO (°)	Target
0.0	0.00	0.00	0.0	0.0	0.0	0.00	0.00	0.00	0.00	
200.0	0.00	0.00	200.0	0.0	0.0	0.00	0.00	0.00	0.00	
470.8	8.12	349.77	469.9	18.9	-3.4	3.00	3.00	0.00	349.77	
8,150.1	8.12	349.77	8,072.1	1,086.9	-196.1	0.00	0.00	0.00	0.00	
8,420.9	0.00	0.00	8,342.0	1,105.8	-199.5	3.00	-3.00	0.00	180.00	8512A-24 L24 496 TC
8,539.6	0.30	239.67	8,460.7	1,105.6	-199.8	0.25	0.25	-101.34	239.67	
12,291.9	0.30	239.67	12,213.0	1,095.8	-216.5	0.00	0.00	0.00	0.00	8512A-24 L24 496 B+
12,391.9	0.30	239.67	12,313.0	1,095.6	-217.0	0.00	0.00	0.00	0.00	
13,392.0	0.30	239.67	13,313.0	1,093.0	-221.5	0.00	0.00	0.00	0.00	

Cathedral Energy Services

Planning Report

Database:	EDM 5000.1 US Multi Users DB	Local Co-ordinate Reference:	Well 8512A-24 L24 496 (was 8505G-24)
Company:	EnCana Oil & Gas (USA) Inc	TVD Reference:	KBE @ 8208.0ft (Original Well Elev)
Project:	Story Gulch	MD Reference:	KBE @ 8208.0ft (Original Well Elev)
Site:	L24 496	North Reference:	True
Well:	8512A-24 L24 496 (was 8505G-24)	Survey Calculation Method:	Minimum Curvature
Wellbore:	DD		
Design:	Plan #2		

Planned Survey

Measured Depth (ft)	Inclination (°)	Azimuth (°)	Vertical Depth (ft)	+N/-S (ft)	+E/-W (ft)	Vertical Section (ft)	Dogleg Rate (°/100ft)	Build Rate (°/100ft)	Comments / Formations
0.0	0.00	0.00	0.0	0.0	0.0	0.0	0.00	0.00	
100.0	0.00	0.00	100.0	0.0	0.0	0.0	0.00	0.00	
200.0	0.00	0.00	200.0	0.0	0.0	0.0	0.00	0.00	KOP @ 200' MD
300.0	3.00	349.77	300.0	2.6	-0.5	2.6	3.00	3.00	
400.0	6.00	349.77	399.6	10.3	-1.9	10.5	3.00	3.00	
470.8	8.12	349.77	469.9	18.9	-3.4	19.2	3.00	3.00	EOB; Inc=8.12°
500.0	8.12	349.77	498.8	22.9	-4.1	23.3	0.00	0.00	
600.0	8.12	349.77	597.8	36.8	-6.6	37.4	0.00	0.00	
700.0	8.12	349.77	696.8	50.7	-9.2	51.6	0.00	0.00	
800.0	8.12	349.77	795.8	64.6	-11.7	65.7	0.00	0.00	
900.0	8.12	349.77	894.8	78.6	-14.2	79.8	0.00	0.00	
1,000.0	8.12	349.77	993.8	92.5	-16.7	93.9	0.00	0.00	
1,100.0	8.12	349.77	1,092.8	106.4	-19.2	108.1	0.00	0.00	
1,200.0	8.12	349.77	1,191.8	120.3	-21.7	122.2	0.00	0.00	
1,300.0	8.12	349.77	1,290.8	134.2	-24.2	136.3	0.00	0.00	
1,304.3	8.12	349.77	1,295.0	134.8	-24.3	136.9	0.00	0.00	A_GROOVE
1,400.0	8.12	349.77	1,389.8	148.1	-26.7	150.5	0.00	0.00	
1,500.0	8.12	349.77	1,488.8	162.0	-29.2	164.6	0.00	0.00	
1,600.0	8.12	349.77	1,587.8	175.9	-31.7	178.7	0.00	0.00	
1,700.0	8.12	349.77	1,686.8	189.8	-34.2	192.9	0.00	0.00	
1,800.0	8.12	349.77	1,785.8	203.7	-36.8	207.0	0.00	0.00	
1,900.0	8.12	349.77	1,884.7	217.6	-39.3	221.1	0.00	0.00	
2,000.0	8.12	349.77	1,983.7	231.6	-41.8	235.3	0.00	0.00	
2,100.0	8.12	349.77	2,082.7	245.5	-44.3	249.4	0.00	0.00	
2,200.0	8.12	349.77	2,181.7	259.4	-46.8	263.5	0.00	0.00	
2,300.0	8.12	349.77	2,280.7	273.3	-49.3	277.7	0.00	0.00	
2,400.0	8.12	349.77	2,379.7	287.2	-51.8	291.8	0.00	0.00	
2,500.0	8.12	349.77	2,478.7	301.1	-54.3	305.9	0.00	0.00	
2,516.4	8.12	349.77	2,495.0	303.4	-54.7	308.2	0.00	0.00	GARDEN_GULCH / L-1
2,600.0	8.12	349.77	2,577.7	315.0	-56.8	320.0	0.00	0.00	
2,700.0	8.12	349.77	2,676.7	328.9	-59.3	334.2	0.00	0.00	
2,800.0	8.12	349.77	2,775.7	342.8	-61.8	348.3	0.00	0.00	
2,900.0	8.12	349.77	2,874.7	356.7	-64.4	362.4	0.00	0.00	
3,000.0	8.12	349.77	2,973.7	370.6	-66.9	376.6	0.00	0.00	
3,100.0	8.12	349.77	3,072.7	384.5	-69.4	390.7	0.00	0.00	
3,200.0	8.12	349.77	3,171.7	398.5	-71.9	404.8	0.00	0.00	
3,300.0	8.12	349.77	3,270.7	412.4	-74.4	419.0	0.00	0.00	
3,400.0	8.12	349.77	3,369.7	426.3	-76.9	433.1	0.00	0.00	
3,500.0	8.12	349.77	3,468.7	440.2	-79.4	447.2	0.00	0.00	
3,600.0	8.12	349.77	3,567.7	454.1	-81.9	461.4	0.00	0.00	
3,700.0	8.12	349.77	3,666.7	468.0	-84.4	475.5	0.00	0.00	
3,800.0	8.12	349.77	3,765.7	481.9	-86.9	489.6	0.00	0.00	
3,900.0	8.12	349.77	3,864.7	495.8	-89.5	503.7	0.00	0.00	
4,000.0	8.12	349.77	3,963.7	509.7	-92.0	517.9	0.00	0.00	
4,100.0	8.12	349.77	4,062.7	523.6	-94.5	532.0	0.00	0.00	
4,200.0	8.12	349.77	4,161.7	537.5	-97.0	546.1	0.00	0.00	
4,300.0	8.12	349.77	4,260.7	551.4	-99.5	560.3	0.00	0.00	
4,400.0	8.12	349.77	4,359.7	565.4	-102.0	574.4	0.00	0.00	
4,500.0	8.12	349.77	4,458.6	579.3	-104.5	588.5	0.00	0.00	
4,600.0	8.12	349.77	4,557.6	593.2	-107.0	602.7	0.00	0.00	
4,700.0	8.12	349.77	4,656.6	607.1	-109.5	616.8	0.00	0.00	
4,800.0	8.12	349.77	4,755.6	621.0	-112.0	630.9	0.00	0.00	

Cathedral Energy Services

Planning Report

Database:	EDM 5000.1 US Multi Users DB	Local Co-ordinate Reference:	Well 8512A-24 L24 496 (was 8505G-24)
Company:	EnCana Oil & Gas (USA) Inc	TVD Reference:	KBE @ 8208.0ft (Original Well Elev)
Project:	Story Gulch	MD Reference:	KBE @ 8208.0ft (Original Well Elev)
Site:	L24 496	North Reference:	True
Well:	8512A-24 L24 496 (was 8505G-24)	Survey Calculation Method:	Minimum Curvature
Wellbore:	DD		
Design:	Plan #2		

Planned Survey									
Measured Depth (ft)	Inclination (°)	Azimuth (°)	Vertical Depth (ft)	+N/-S (ft)	+E/-W (ft)	Vertical Section (ft)	Dogleg Rate (°/100ft)	Build Rate (°/100ft)	Comments / Formations
4,900.0	8.12	349.77	4,854.6	634.9	-114.5	645.1	0.00	0.00	
5,000.0	8.12	349.77	4,953.6	648.8	-117.1	659.2	0.00	0.00	
5,100.0	8.12	349.77	5,052.6	662.7	-119.6	673.3	0.00	0.00	
5,200.0	8.12	349.77	5,151.6	676.6	-122.1	687.5	0.00	0.00	
5,300.0	8.12	349.77	5,250.6	690.5	-124.6	701.6	0.00	0.00	
5,400.0	8.12	349.77	5,349.6	704.4	-127.1	715.7	0.00	0.00	
5,500.0	8.12	349.77	5,448.6	718.4	-129.6	729.8	0.00	0.00	
5,600.0	8.12	349.77	5,547.6	732.3	-132.1	744.0	0.00	0.00	
5,700.0	8.12	349.77	5,646.6	746.2	-134.6	758.1	0.00	0.00	
5,800.0	8.12	349.77	5,745.6	760.1	-137.1	772.2	0.00	0.00	
5,900.0	8.12	349.77	5,844.6	774.0	-139.6	786.4	0.00	0.00	
5,992.3	8.12	349.77	5,936.0	786.8	-142.0	799.4	0.00	0.00	WASATCH_G
6,000.0	8.12	349.77	5,943.6	787.9	-142.1	800.5	0.00	0.00	
6,100.0	8.12	349.77	6,042.6	801.8	-144.7	814.6	0.00	0.00	
6,200.0	8.12	349.77	6,141.6	815.7	-147.2	828.8	0.00	0.00	
6,300.0	8.12	349.77	6,240.6	829.6	-149.7	842.9	0.00	0.00	
6,400.0	8.12	349.77	6,339.6	843.5	-152.2	857.0	0.00	0.00	
6,500.0	8.12	349.77	6,438.6	857.4	-154.7	871.2	0.00	0.00	
6,600.0	8.12	349.77	6,537.6	871.3	-157.2	885.3	0.00	0.00	
6,700.0	8.12	349.77	6,636.6	885.3	-159.7	899.4	0.00	0.00	
6,800.0	8.12	349.77	6,735.6	899.2	-162.2	913.6	0.00	0.00	
6,900.0	8.12	349.77	6,834.6	913.1	-164.7	927.7	0.00	0.00	
7,000.0	8.12	349.77	6,933.6	927.0	-167.2	941.8	0.00	0.00	
7,100.0	8.12	349.77	7,032.6	940.9	-169.7	955.9	0.00	0.00	
7,200.0	8.12	349.77	7,131.5	954.8	-172.3	970.1	0.00	0.00	
7,300.0	8.12	349.77	7,230.5	968.7	-174.8	984.2	0.00	0.00	
7,400.0	8.12	349.77	7,329.5	982.6	-177.3	998.3	0.00	0.00	
7,500.0	8.12	349.77	7,428.5	996.5	-179.8	1,012.5	0.00	0.00	
7,600.0	8.12	349.77	7,527.5	1,010.4	-182.3	1,026.6	0.00	0.00	
7,700.0	8.12	349.77	7,626.5	1,024.3	-184.8	1,040.7	0.00	0.00	
7,800.0	8.12	349.77	7,725.5	1,038.2	-187.3	1,054.9	0.00	0.00	
7,900.0	8.12	349.77	7,824.5	1,052.2	-189.8	1,069.0	0.00	0.00	
8,000.0	8.12	349.77	7,923.5	1,066.1	-192.3	1,083.1	0.00	0.00	
8,100.0	8.12	349.77	8,022.5	1,080.0	-194.8	1,097.3	0.00	0.00	
8,150.1	8.12	349.77	8,072.1	1,086.9	-196.1	1,104.3	0.00	0.00	Start Drop -3.00
8,200.0	6.63	349.77	8,121.6	1,093.2	-197.2	1,110.7	3.00	-3.00	
8,300.0	3.63	349.77	8,221.2	1,102.0	-198.8	1,119.7	3.00	-3.00	
8,380.9	1.20	349.77	8,302.0	1,105.4	-199.4	1,123.1	3.00	-3.00	WILLIAMS_FORK
8,400.0	0.63	349.77	8,321.1	1,105.7	-199.5	1,123.4	3.00	-3.00	
8,420.9	0.00	0.00	8,342.0	1,105.8	-199.5	1,123.5	3.00	-3.00	EOD; Inc=0° - TOG - 8512A-24 L24 496 TOG -
8,500.0	0.20	239.67	8,421.1	1,105.7	-199.6	1,123.5	0.25	0.25	
8,539.6	0.30	239.67	8,460.7	1,105.6	-199.8	1,123.4	0.25	0.25	
8,600.0	0.30	239.67	8,521.1	1,105.5	-200.0	1,123.3	0.00	0.00	
8,700.0	0.30	239.67	8,621.1	1,105.2	-200.5	1,123.1	0.00	0.00	
8,800.0	0.30	239.67	8,721.1	1,105.0	-200.9	1,123.0	0.00	0.00	
8,900.0	0.30	239.67	8,821.1	1,104.7	-201.4	1,122.8	0.00	0.00	
9,000.0	0.30	239.67	8,921.1	1,104.4	-201.8	1,122.6	0.00	0.00	
9,100.0	0.30	239.67	9,021.1	1,104.2	-202.3	1,122.4	0.00	0.00	
9,200.0	0.30	239.67	9,121.1	1,103.9	-202.7	1,122.3	0.00	0.00	
9,300.0	0.30	239.67	9,221.1	1,103.7	-203.2	1,122.1	0.00	0.00	
9,400.0	0.30	239.67	9,321.1	1,103.4	-203.6	1,121.9	0.00	0.00	
9,500.0	0.30	239.67	9,421.1	1,103.1	-204.1	1,121.8	0.00	0.00	

Cathedral Energy Services

Planning Report

Database:	EDM 5000.1 US Multi Users DB	Local Co-ordinate Reference:	Well 8512A-24 L24 496 (was 8505G-24)
Company:	EnCana Oil & Gas (USA) Inc	TVD Reference:	KBE @ 8208.0ft (Original Well Elev)
Project:	Story Gulch	MD Reference:	KBE @ 8208.0ft (Original Well Elev)
Site:	L24 496	North Reference:	True
Well:	8512A-24 L24 496 (was 8505G-24)	Survey Calculation Method:	Minimum Curvature
Wellbore:	DD		
Design:	Plan #2		

Planned Survey									
Measured Depth (ft)	Inclination (°)	Azimuth (°)	Vertical Depth (ft)	+N/-S (ft)	+E/-W (ft)	Vertical Section (ft)	Dogleg Rate (°/100ft)	Build Rate (°/100ft)	Comments / Formations
9,600.0	0.30	239.67	9,521.1	1,102.9	-204.5	1,121.6	0.00	0.00	
9,700.0	0.30	239.67	9,621.1	1,102.6	-205.0	1,121.4	0.00	0.00	
9,800.0	0.30	239.67	9,721.1	1,102.4	-205.4	1,121.3	0.00	0.00	
9,900.0	0.30	239.67	9,821.1	1,102.1	-205.8	1,121.1	0.00	0.00	
10,000.0	0.30	239.67	9,921.1	1,101.8	-206.3	1,120.9	0.00	0.00	
10,100.0	0.30	239.67	10,021.1	1,101.6	-206.7	1,120.7	0.00	0.00	
10,200.0	0.30	239.67	10,121.1	1,101.3	-207.2	1,120.6	0.00	0.00	
10,300.0	0.30	239.67	10,221.1	1,101.0	-207.6	1,120.4	0.00	0.00	
10,400.0	0.30	239.67	10,321.1	1,100.8	-208.1	1,120.2	0.00	0.00	
10,500.0	0.30	239.67	10,421.1	1,100.5	-208.5	1,120.1	0.00	0.00	
10,600.0	0.30	239.67	10,521.1	1,100.3	-209.0	1,119.9	0.00	0.00	
10,700.0	0.30	239.67	10,621.1	1,100.0	-209.4	1,119.7	0.00	0.00	
10,800.0	0.30	239.67	10,721.1	1,099.7	-209.9	1,119.6	0.00	0.00	
10,900.0	0.30	239.67	10,821.1	1,099.5	-210.3	1,119.4	0.00	0.00	
11,000.0	0.30	239.67	10,921.1	1,099.2	-210.8	1,119.2	0.00	0.00	
11,100.0	0.30	239.67	11,021.1	1,099.0	-211.2	1,119.0	0.00	0.00	
11,200.0	0.30	239.67	11,121.1	1,098.7	-211.7	1,118.9	0.00	0.00	
11,300.0	0.30	239.67	11,221.1	1,098.4	-212.1	1,118.7	0.00	0.00	
11,400.0	0.30	239.67	11,321.1	1,098.2	-212.6	1,118.5	0.00	0.00	
11,500.0	0.30	239.67	11,421.1	1,097.9	-213.0	1,118.4	0.00	0.00	
11,600.0	0.30	239.67	11,521.1	1,097.6	-213.5	1,118.2	0.00	0.00	
11,700.0	0.30	239.67	11,621.1	1,097.4	-213.9	1,118.0	0.00	0.00	
11,800.0	0.30	239.67	11,721.1	1,097.1	-214.3	1,117.9	0.00	0.00	
11,900.0	0.30	239.67	11,821.1	1,096.9	-214.8	1,117.7	0.00	0.00	
12,000.0	0.30	239.67	11,921.1	1,096.6	-215.2	1,117.5	0.00	0.00	
12,100.0	0.30	239.67	12,021.1	1,096.3	-215.7	1,117.4	0.00	0.00	
12,200.0	0.30	239.67	12,121.1	1,096.1	-216.1	1,117.2	0.00	0.00	
12,291.9	0.30	239.67	12,213.0	1,095.8	-216.5	1,117.0	0.00	0.00	ROLLINS - 8512A-24 L24 496 BHL - 8505G-24
12,300.0	0.30	239.67	12,221.1	1,095.8	-216.6	1,117.0	0.00	0.00	
12,391.9	0.30	239.67	12,313.0	1,095.6	-217.0	1,116.9	0.00	0.00	Drillers TD @ 12391.9' MD
12,400.0	0.30	239.67	12,321.1	1,095.6	-217.0	1,116.8	0.00	0.00	
12,454.9	0.30	239.67	12,376.0	1,095.4	-217.3	1,116.7	0.00	0.00	COZZETTE
12,500.0	0.30	239.67	12,421.1	1,095.3	-217.5	1,116.7	0.00	0.00	
12,600.0	0.30	239.67	12,521.1	1,095.0	-217.9	1,116.5	0.00	0.00	
12,700.0	0.30	239.67	12,621.0	1,094.8	-218.4	1,116.3	0.00	0.00	
12,704.0	0.30	239.67	12,625.0	1,094.8	-218.4	1,116.3	0.00	0.00	LOWER_SEGO
12,744.0	0.30	239.67	12,665.0	1,094.7	-218.6	1,116.3	0.00	0.00	CORCORAN
12,800.0	0.30	239.67	12,721.0	1,094.5	-218.8	1,116.2	0.00	0.00	
12,900.0	0.30	239.67	12,821.0	1,094.2	-219.3	1,116.0	0.00	0.00	
12,956.0	0.30	239.67	12,877.0	1,094.1	-219.5	1,115.9	0.00	0.00	SEGO
13,000.0	0.30	239.67	12,921.0	1,094.0	-219.7	1,115.8	0.00	0.00	
13,100.0	0.30	239.67	13,021.0	1,093.7	-220.2	1,115.7	0.00	0.00	
13,200.0	0.30	239.67	13,121.0	1,093.5	-220.6	1,115.5	0.00	0.00	
13,300.0	0.30	239.67	13,221.0	1,093.2	-221.1	1,115.3	0.00	0.00	
13,392.0	0.30	239.67	13,313.0	1,093.0	-221.5	1,115.2	0.00	0.00	

Cathedral Energy Services

Planning Report

Database:	EDM 5000.1 US Multi Users DB	Local Co-ordinate Reference:	Well 8512A-24 L24 496 (was 8505G-24)
Company:	EnCana Oil & Gas (USA) Inc	TVD Reference:	KBE @ 8208.0ft (Original Well Elev)
Project:	Story Gulch	MD Reference:	KBE @ 8208.0ft (Original Well Elev)
Site:	L24 496	North Reference:	True
Well:	8512A-24 L24 496 (was 8505G-24)	Survey Calculation Method:	Minimum Curvature
Wellbore:	DD		
Design:	Plan #2		

Targets									
Target Name									
- hit/miss target	Dip Angle	Dip Dir.	TVD	+N/-S	+E/-W	Northing	Easting	Latitude	Longitude
- Shape	(°)	(°)	(ft)	(ft)	(ft)	(ft)	(ft)		
8512A-24 L24 496 BHL - plan hits target center - Rectangle (sides W30.0 H50.0 D0.0)	0.00	0.00	12,213.0	1,095.8	-216.5	1,686,126.14	2,261,604.34	39° 41' 16.55 N	108° 7' 26.76 W
8505G-24 L24 496 BHL - plan hits target center - Rectangle (sides W30.0 H50.0 D0.0)	0.00	0.00	12,213.0	1,095.8	-216.5	1,686,126.14	2,261,604.34	39° 41' 16.55 N	108° 7' 26.76 W
8512A-24 L24 496 TOG - plan hits target center - Point	0.00	0.00	8,342.0	1,105.8	-199.5	1,686,135.62	2,261,621.66	39° 41' 16.65 N	108° 7' 26.54 W
8505G-24 L24 496 TOG - plan hits target center - Point	0.00	0.00	8,342.0	1,105.8	-199.5	1,686,135.62	2,261,621.66	39° 41' 16.65 N	108° 7' 26.54 W

Formations						
Measured Depth	Vertical Depth	Name	Lithology	Dip	Dip Direction	
(ft)	(ft)			(°)	(°)	
1,304.3	1,295.0	A_GROOVE				
2,516.4	2,495.0	GARDEN_GULCH / L-1				
5,992.3	5,936.0	WASATCH_G				
8,380.9	8,302.0	WILLIAMS_FORK				
8,420.9	8,342.0	TOG				
12,291.9	12,213.0	ROLLINS				
12,454.9	12,376.0	COZZETTE				
12,704.0	12,625.0	LOWER_SEGO				
12,744.0	12,665.0	CORCORAN				
12,956.0	12,877.0	SEGO				

Plan Annotations					
Measured Depth	Vertical Depth	Local Coordinates			
(ft)	(ft)	+N/-S (ft)	+E/-W (ft)	Comment	
200.0	200.0	0.0	0.0	KOP @ 200' MD	
470.8	469.9	18.9	-3.4	EOB; Inc=8.12°	
8,150.1	8,072.1	1,086.9	-196.1	Start Drop -3.00	
8,420.9	8,342.0	1,105.8	-199.5	EOD; Inc=0°	
12,391.9	12,313.0	1,095.6	-217.0	Drillers TD @ 12391.9' MD	
13,392.0	13,313.0	1,093.0	-221.5	Permit TD @ 13392.0' MD	