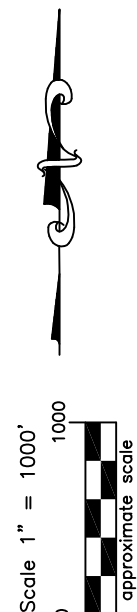
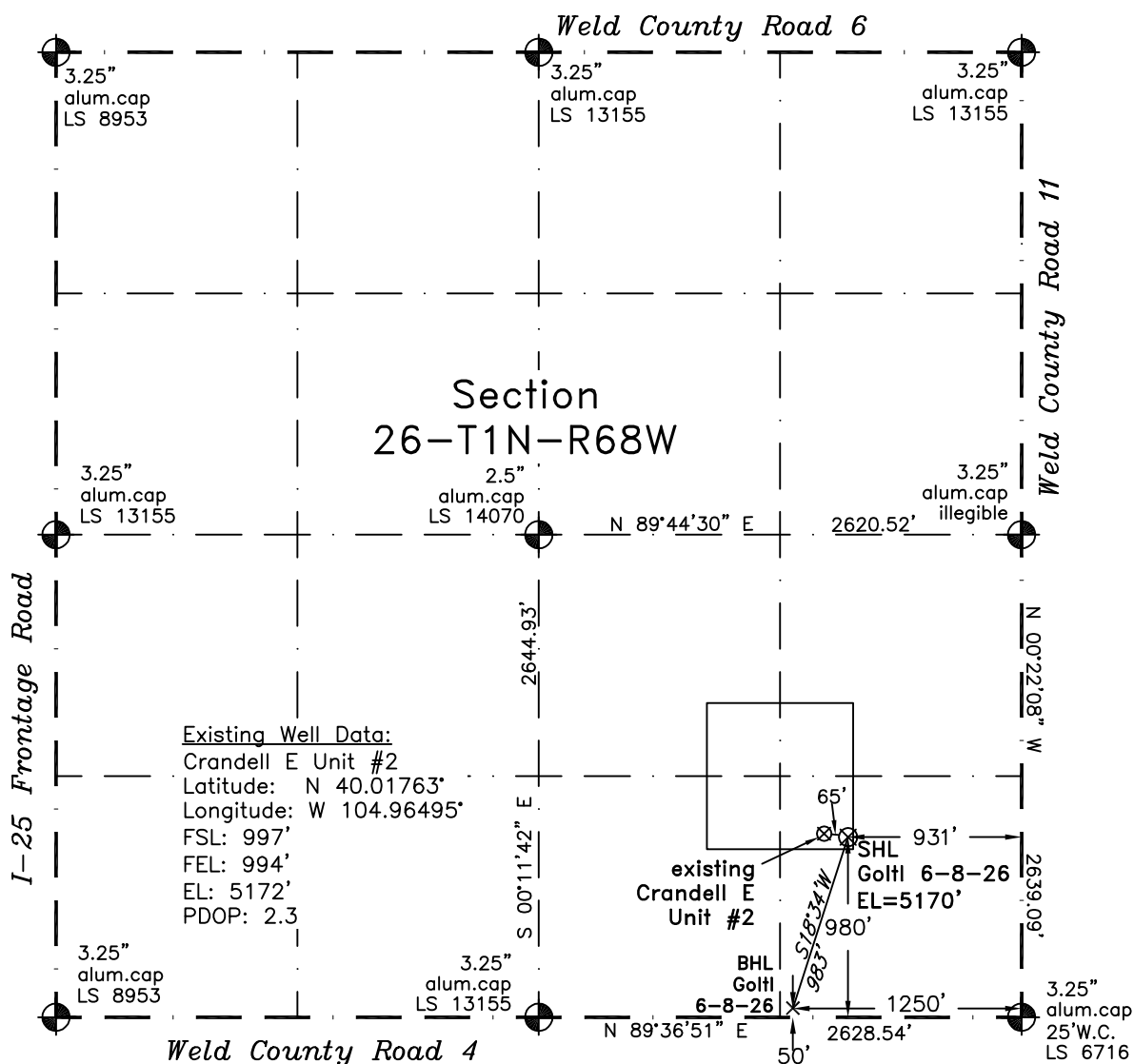


PLS Group, LLC  
109 Coronado Ct. - Bldg. 7  
Fort Collins, Colorado 80525  
P. 970-282-3446 Fx. 970-377-6767

# WELL LOCATION CERTIFICATE

THIS MAP DOES NOT REPRESENT A BOUNDARY SURVEY



LEGEND  
— found survey monument  
- - - calculated dimension  
(c)

In accordance with a request from Jennifer Lind of EnCana Oil & Gas (USA) Inc., PLS Group, LLC has determined the location of the **Golft 6-8-26** well site to be SHL: 980' FSL and 931' FEL, BHL: 50' FSL and 1250' FEL, as measured at ninety (90) degrees from the section lines of Section 26, Township 1 North, Range 68 West, 6th Principal Meridian, City and County of Broomfield, CO.

## Proposed Surface Hole Data:

Latitude: N 40.01759° (BHL 40.01503°)  
Longitude: W 104.96473° (BHL 104.96586°)  
PDOP: 1.3

## Nearest:

Building 559' northeast	Above Ground Utility 896' east
Public Road 916' east	Railroad 4100' northeast
Property Line 382' west	Well Window: SHL is 16' inside
Existing Well: Crandell E Unit #2, 65' northwest	

## Notes:

- 1) Bearings and distances based upon NAD 83 Colorado North State Plane Coordinates using RTK GPS observations taken on 10/8/2009 by operator Tom Winans.
- 2) Conversion factor to ground (1.000280465).
- 3) Elevations based on NAVD 88 GPS heights and Geoid 2003 corrections.
- 4) See Location Drawing for visible improvements within 400 feet.
- 5) The surface is a cultivated field.

**NOTICE:** According to Colorado law you must commence any legal action based upon any defect in this W.L.C. within three years after you first discover such defect. In no event may any action based upon any defect in this W.L.C. be commenced more than ten years from this said date of the certification shown hereon.

I hereby certify that this Well Location Certificate was prepared by me or under my direct supervision on 10/10/2011 for and on behalf of EnCana Oil & Gas (USA) Inc. That it is not a Land Survey Plat or an Improvement Survey Plat and that it is not to be relied upon for establishment of fences, buildings, or other future improvement lines.

John Robert McGehee LS#38219  
Well: Golft 6-8-26 WLC