



+N/-S  
0.0

+E/-W  
0.0

Northing  
1754547.10

Easting  
2196446.40

Latitude  
39° 52' 13.013 N

Longitude  
108° 21' 47.355 W

Slot  
A6

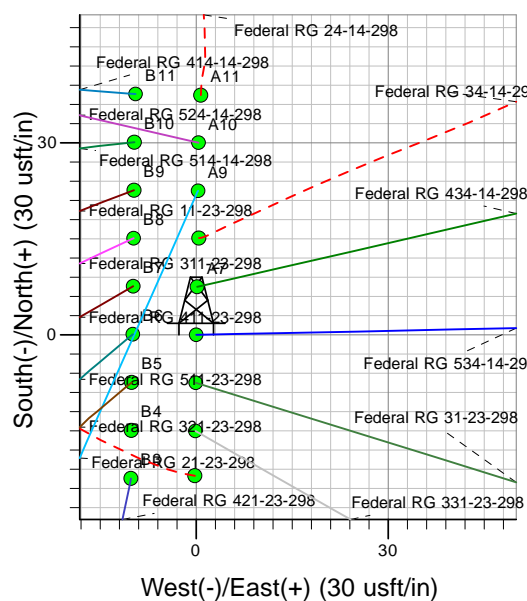
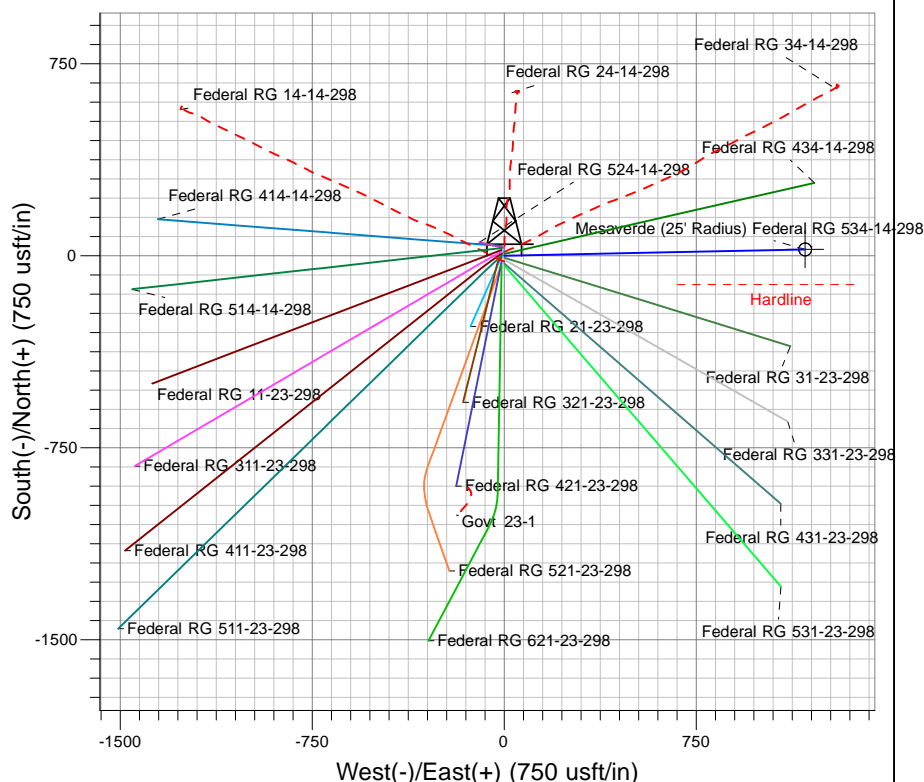
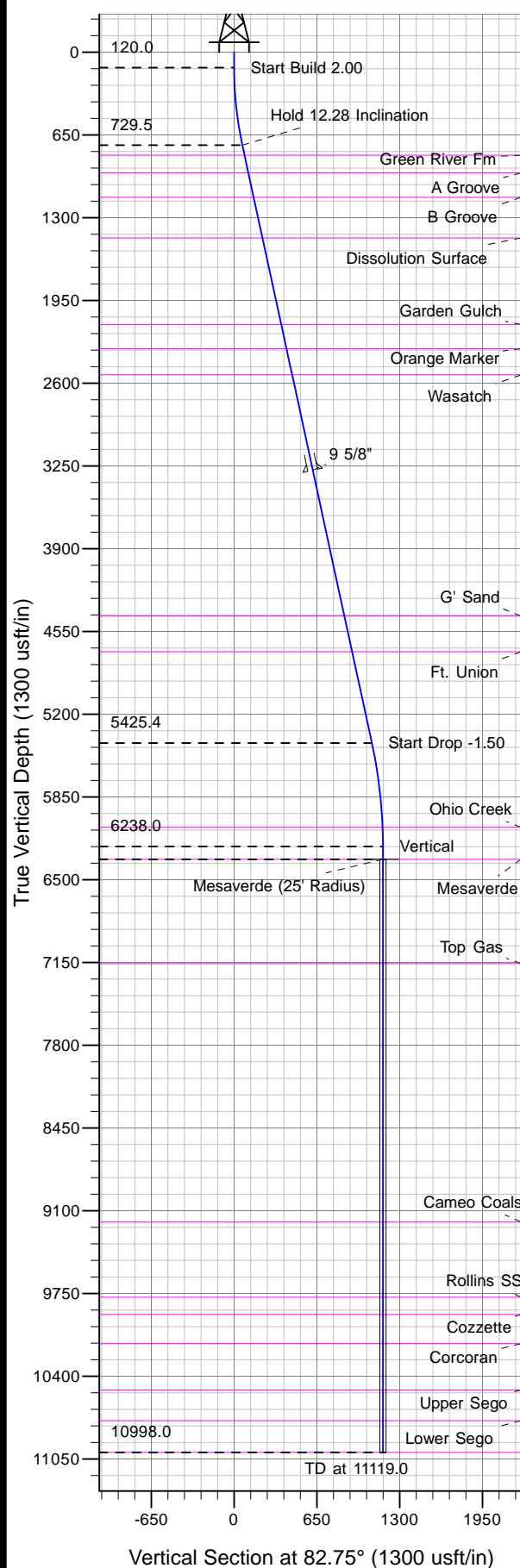
Well Name: Federal RG 534-14-298

Surface Location: Federal RG 24-14-298 Pad

North American Datum 1983 , US State Plane 1983 , Colorado Central Zone

Ground Elevation: 6686.0

KELLY BUSHING @ 6708.0usft (Frontier 10 (22' RKB) kjs)



Project: RG 14-02S-098W  
Site: Federal RG 24-14-298 Pad  
Well: Federal RG 534-14-298  
Plan #2 13Apr11 kjs

Azimuths to True North  
Magnetic North: 11.04°  
Magnetic Field  
Strength: 52801.5snT  
Dip Angle: 66.09°  
Date: 8/30/2007  
Model: IGRF2005-10

# ANNOTATIONS

TVD	MD	Inc	Azi	+N/-S	+E/-W	VSec	Departure	Annotation
120.0	120.0	0.00	0.00	0.0	0.0	0.0	0.0	Start Build 2.00
729.5	734.1	12.28	88.80	1.4	65.6	65.2	65.6	Hold 12.28 Inclination
5425.4	5540.1	12.28	88.80	22.7	1087.8	1081.9	1088.0	Start Drop -1.50
6238.0	6359.0	0.00	0.00	24.5	1175.2	1168.9	1175.4	Vertical
6338.0	6459.0	0.00	0.00	24.5	1175.2	1168.9	1175.4	Mesaverde
10998.0	11119.0	0.00	0.00	24.5	1175.2	1168.9	1175.4	TD at 11119.0