



COMPENSATED DENSITY
COMPENSATED NEUTRON
MICROLOG

Phoenix Surveys, Inc.

Company Noble Energy Inc.
Well Mosier K23-2-1D
Field Wattenberg
County Weld
State/Province Colorado

Location SHL 2359 FSL & 2522 FWL NE SW
BHL 2569 FNL & 2581 FEL SW NE
Sec 23 Twp 4N Rge 69W
Elevation 4725
Log Measured From K/S
Depth Unit Feet
Bottom Logged Interval 27452 - 27453

Drilling Measures From K/S
Date Entered April 18, 2011
Depth Unit Feet
Bottom Logged Interval 27452 - 27453

Company
Well
County
State/Province

Location
Sec
Elevation
Log Measured From
Depth Unit
Bottom Logged Interval

Drilling Measures From
Date Entered
Depth Unit
Bottom Logged Interval

Company
Well
County
State/Province

Location
Sec
Elevation
Log Measured From
Depth Unit
Bottom Logged Interval

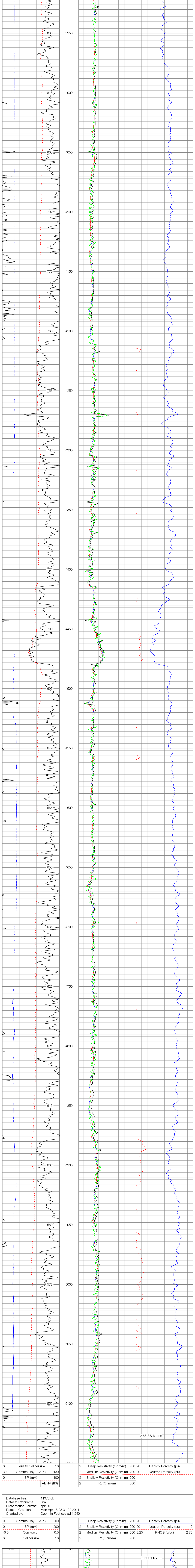
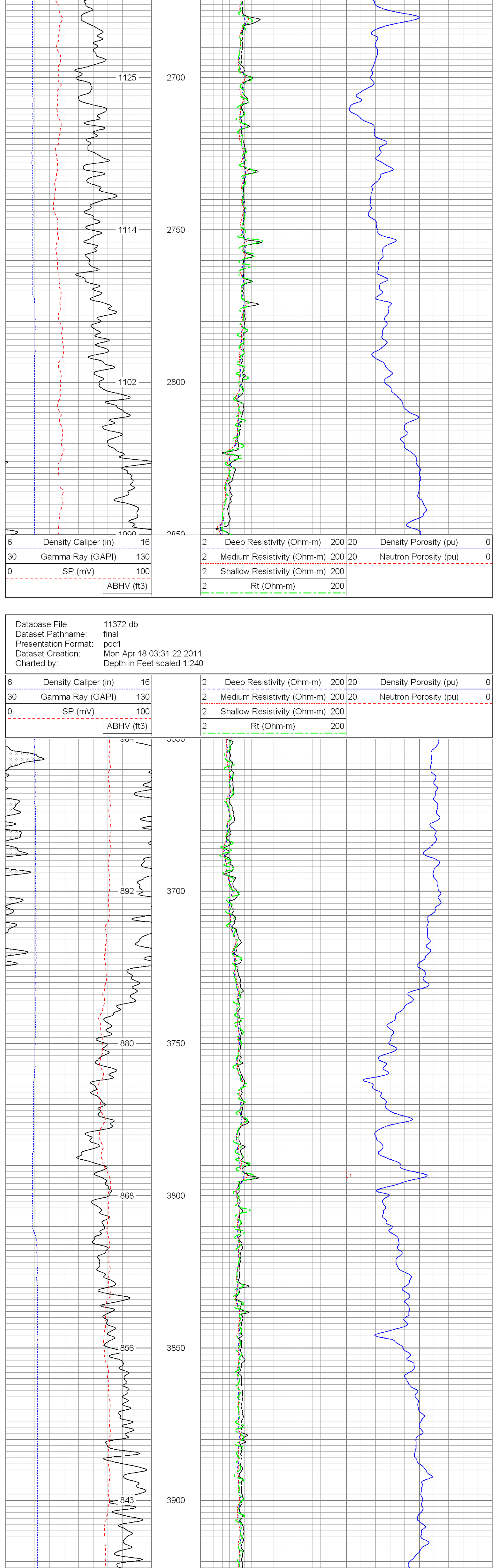
Drilling Measures From
Date Entered
Depth Unit
Bottom Logged Interval

All interpretations are opinions based on inferences from electrical or other measurements and we cannot and do not guarantee the accuracy or correctness of any interpretation, and we shall not accept in the case of gross or willful negligence on our part to be liable or responsible for any loss, costs, damages, or expenses incurred or sustained by anyone resulting from any interpretation made by any of our officers, agents or employees. These interpretations are also subject to our general terms and conditions set out in our current Price Schedule.

Comments

Annular volume calculated for 4.5" casing
Ensign Drilling Rig 126
Thank you for using Phoenix Surveys!!
API #: 05-123-31665-00-00

Database File: 11372.db
Dataset Pathname: final
Presentation Format: pdc1
Dataset Creation: Mon Apr 18 03:31:22 2011
Charted by: Depth in Feet scaled 1:240



Database File: 11372.db
Dataset Pathname: final
Presentation Format: split20
Dataset Creation: Mon Apr 18 03:31:22 2011
Charted by: Depth in Feet scaled 1:240

