

---

# **CHEVRON - MID-CONTINENT EBIZ**

---

**SKR 698-09-AV-07  
SKINNER RIDGE  
Garfield County , Colorado**

**Cement Surface Casing**  
**13-May-2009**

**Job Site Documents**

## The Road to Excellence Starts with Safety

Sold To #: 338668		Ship To #: 2713345		Quote #:		Sales Order #: 6663513	
Customer: CHEVRON - MID-CONTINENT EBIZ				Customer Rep: DOHERTY, ED			
Well Name: SKR		Well #: 698-09-AV-07		API/UWI #: 05-045-17296			
Field: SKINNER RIDGE		City (SAP): PARACHUTE		County/Parish: Garfield		State: Colorado	
Lat: N 39.551 deg. OR N 39 deg. 33 min. 3.636 secs.				Long: W 108.33 deg. OR W -109 deg. 40 min. 12.77 secs.			
Contractor: H&P 318		Rig/Platform Name/Num: H&P 318					
Job Purpose: Cement Surface Casing							
Well Type: Development Well				Job Type: Cement Surface Casing			
Sales Person: HARTLEY, RICHARD				Srv Supervisor: BROST, ROBERT		MBU ID Emp #: 394382	
Job Personnel							
HES Emp Name	Exp Hrs	Emp #	HES Emp Name	Exp Hrs	Emp #	HES Emp Name	Exp Hrs
BROST, ROBERT W	9	394382	HUGHES, STEVEN	9	300140	smith, chris	9
STILLSON, ERIC W	9	393789	Shane				452619
Equipment							
HES Unit #	Distance-1 way	HES Unit #	Distance-1 way	HES Unit #	Distance-1 way	HES Unit #	Distance-1 way
10829462	60 mile	10872429	60 mile	10897909	60 mile		
Job Hours							
Date	On Location Hours	Operating Hours	Date	On Location Hours	Operating Hours	Date	On Location Hours
5/12/09	1.5	0	5/13/09	5	1		
TOTAL		Total is the sum of each column separately					
Job							
Formation Name				Job Times			
Formation Depth (MD)		Top	Bottom	Called Out	Date	Time	Time Zone
Form Type		BHST		On Location	12 - May - 2009	19:00	MST
Job depth MD		992. ft	Job Depth TVD	Job Started	12 - May - 2009	22:30	MST
Water Depth		Wk Ht Above Floor		Job Completed	13 - May - 2009	01:22	MST
Perforation Depth (MD)		From	To	Job Completed	13 - May - 2009	02:19	MST
Perforation Depth (MD)		From	To	Departed Loc	13 - May - 2009	04:30	MST
Well Data							
Description	New / Used	Max pressure psig	Size in	ID in	Weight lbm/ft	Thread	Grade
12 1/4 Open Hole Section				12.25			
Surface Casing	New		8.625	7.921	32.		
Sales/Rental/3 <sup>rd</sup> Party (HES)							
Description				Qty	Qty uom	Depth	Supplier
PLUG,CMTG, TOP, 8 5/8, HW, 7.20 MIN/8.09 MA				1	EA		
PORT. DAS W/CEMWIN; ACQUIRE W/HES, ZI				1	JOB		
ADC (AUTO DENSITY CTRL) SYS, /JOB, ZI				1	JOB		
Tools and Accessories							
Type	Size	Qty	Make	Depth	Type	Size	Qty
Guide Shoe					Packer		
Float Shoe					Bridge Plug		
Float Collar					Retainer		
Insert Float							
Stage Tool							
Miscellaneous Materials							
Gelling Agt		Conc		Surfactant		Conc	
Treatment Fld		Conc		Inhibitor		Conc	
				Acid Type		Qty	
				Sand Type		Size	
						Conc	%
						Qty	



Fluid Data									
Stage/Plug #: 1									
Fluid #	Stage Type	Fluid Name	Qty	Qty uom	Mixing Density lbm/gal	Yield ft <sup>3</sup> /sk	Mix Fluid Gal/sk	Rate bbl/min	Total Mix Fluid Gal/sk
1	PolyFlake Dyed Spacer		30.00	bbl	8.33	.0	.0	2	
2	Lead Cement	VERSACEM (TM) SYSTEM (452010)	140.0	sacks	12.3	2.38	13.75	6	
	2 %	CAL-SEAL 60, 50 LB BAG (101217146)							
	2 %	ECONOLITE (100001580)							
	0.3 %	VERSASET, 55 LB SK (101376573)							
	5.64 lbm	SALT, 100 LB BAG (100003652)							
	0.125 lbm	POLY-E-FLAKE (101216940)							
	0.25 %	D-AIR 3000 (101007446)							
	13.75 Gal	FRESH WATER							
3	Tail Cement	VERSACEM (TM) SYSTEM (452010)	150.0	sacks	12.8	2.11	11.75	6	
	2 %	CAL-SEAL 60, 50 LB BAG (101217146)							
	2 %	ECONOLITE (100001580)							
	0.3 %	VERSASET, 55 LB SK (101376573)							
	5.64 lbm	SALT, 100 LB BAG (100003652)							
	11.75 Gal	FRESH WATER							
4	Fresh Water Displacement		60.6	bbl	8.33	.0	.0	8	
Calculated Values		Pressures		Volumes					
Displacement	60.6	Shut In: Instant		Lost Returns	No	Cement Slurry	121	Pad	
Top Of Cement	surface	5 Min		Cement Returns	30	Actual Displacement	60	Treatment	
Frac Gradient		15 Min		Spacers	30	Load and Breakdown		Total Job	
Rates									
Circulating rig		Mixing	6	Displacement	8	Avg. Job	6.5		
Cement Left In Pipe	Amount	42 ft	Reason	Shoe Joint					
Frac Ring # 1 @	ID	Frac ring # 2 @	ID	Frac Ring # 3 @	ID	Frac Ring # 4 @	ID		
The Information Stated Herein Is Correct				Customer Representative Signature					

*The Road to Excellence Starts with Safety*

Sold To #: 338668		Ship To #: 2713345		Quote #:		Sales Order #: 6663513	
Customer: CHEVRON - MID-CONTINENT EBIZ				Customer Rep: DOHERTY, ED			
Well Name: SKR			Well #: 698-09-AV-07		API/UWI #: 05-045-17296		
Field: SKINNER RIDGE		City (SAP): PARACHUTE		County/Parish: Garfield		State: Colorado	
Legal Description:							
Lat: N 39.551 deg. OR N 39 deg. 33 min. 3.636 secs.				Long: W 108.33 deg. OR W -109 deg. 40 min. 12.77 secs.			
Contractor: H&P 318			Rig/Platform Name/Num: H&P 318				
Job Purpose: Cement Surface Casing						Ticket Amount:	
Well Type: Development Well			Job Type: Cement Surface Casing				
Sales Person: HARTLEY, RICHARD			Srv Supervisor: BROST, ROBERT			MBU ID Emp #: 394382	

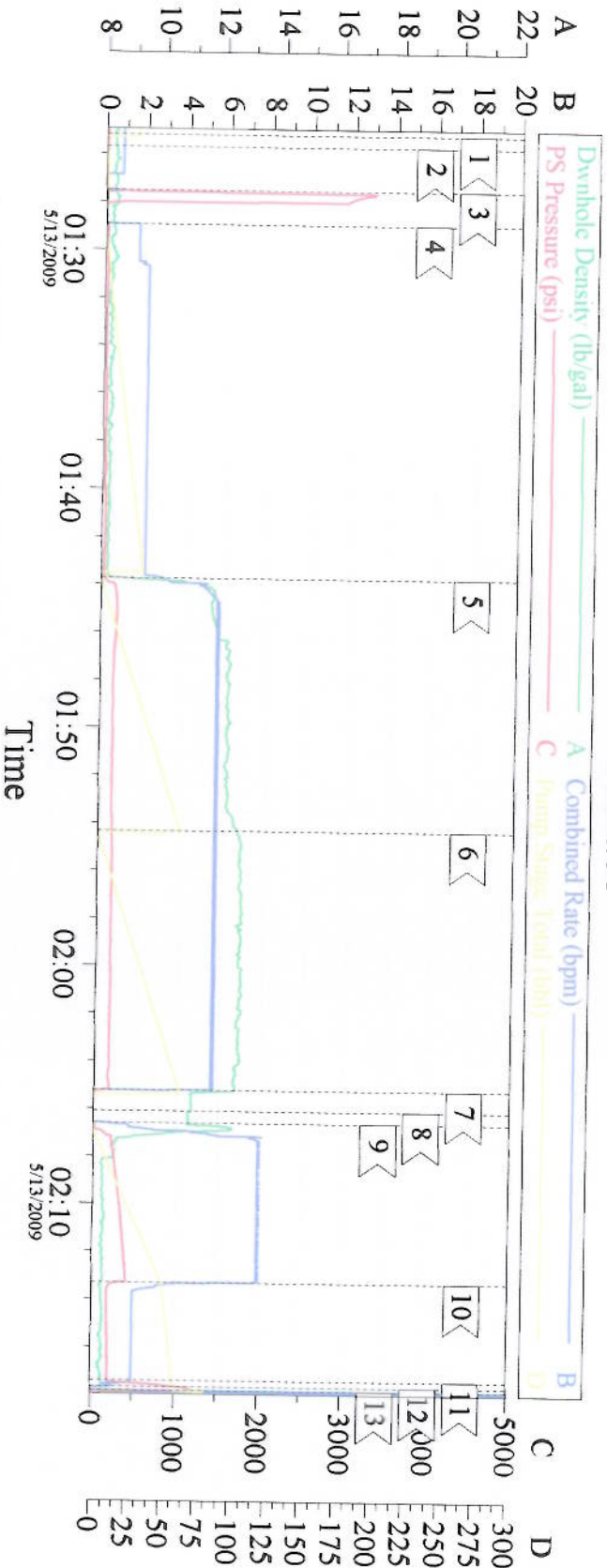
Activity Description	Date/Time	Cht #	Rate bbl/min	Volume bbl		Pressure psig		Comments
				Stage	Total	Tubing	Casing	
Call Out	05/12/2009 19:00							elite#11 8 5/8' surface 992td 995tp 42shoe 12 1/4"hole 9.3ppg mud
Safety Huddle	05/12/2009 20:00							no cell phones use seatbelts watch following distance dusty road to location extra caution
Arrive At Loc	05/12/2009 22:30							
Assessment Of Location Safety Meeting	05/12/2009 22:45							walk threw rigup looking for haz
Rig-Up Equipment	05/12/2009 23:00							BPh2o= 15 BPcmt= 19
Rig-Up Completed	05/12/2009 23:30							
Safety Meeting - Pre Job	05/13/2009 01:00							attn by rig crew pump crew comp rep
Start Job	05/13/2009 01:22			2			12.0	fill lines fresh water 2 bls
Pressure Test	05/13/2009 01:27						3200.0	good test no leaks
Pump Spacer 1	05/13/2009 01:28			30			28.0	dye and poly-flake
Pump Lead Cement	05/13/2009 01:43			59			191.0	140sks 12.3ppg 2.38yield 13.75h2o
Pump Tail Cement	05/13/2009 01:54			56			183.0	150sks 12.8ppg 2.11yield 11.75h2o
Shutdown	05/13/2009 02:05							
Drop Top Plug	05/13/2009 02:06							plug left container
Pump Displacement	05/13/2009 02:06			60.6			418.0	fresh water slow rate last ten bls to 2bls min
Bump Plug	05/13/2009 02:19						205.0	took 1000psi over to land



*Cementing Job Log*

Activity Description	Date/Time	Cht #	Rate bbl/ min	Volume bbl		Pressure psig		Comments
				Stage	Total	Tubing	Casing	
Check Floats	05/13/2009 02:19						1210. 0	floats held
End Job	05/13/2009 02:20							cmt to surface bls=30
Safety Meeting - Pre Rig- Down	05/13/2009 02:30							good ciculation during job
Safety Meeting - Departing Location	05/13/2009 04:30							thank you Robert Brost and crew

# chevron 8 5/8" surface



## Event Log

1	start job	01:25:13	2	fill lines	01:25:42	3	test lines	01:27:31
4	pump spcr	01:28:56	5	pump lead cnt	01:43:45	6	pump tail cnt	01:54:20
7	shut down	02:05:13	8	drop plug	02:06:06	9	pump disp	02:06:37
10	slow rate	02:13:18	11	bump plug	02:17:24	12	check floats	02:17:40
13	end job	02:17:49						

Customer: chevron  
Well Description: surface  
LEASE: SKR

Job Date: 5/13/09  
CEMENTER Robert Brost  
WELL # 698-09-AV-07

Ticket #: 6663513  
ADC USED YES  
CO REP Johnathan