



SUPERIOR
Black Lick, Pa.
Mercer, Pa.
Wooster, Oh.
Cleveland, Ok.
Trinidad, Co.

DUAL INDUCTION LOG

Company XTO Energy Inc.
Well Hill Ranch 14-15
Field Purgatoire River
County Las Animas State Colorado

Location: API # : 05 071 09450 00

1277' FSL & 2144' FEL

SEC 14 TWP 34S RGE 67W

Permanent Datum Ground Level Elevation 7906'
Log Measured From Ground Level
Drilling Measured From Ground Level

Other Services
CDL
NEUTRON
Elevation
K.B. -----
D.F. -----
G.L. 7906'

Date 4-5-08

Run Number One

Depth Driller 2515'

Depth Logger 2511'

Bottom Logged Interval 2509'

Top Log Interval Surface Casing

Casing Driller 8 5/8" @ 450'

Casing Logger 452'

Bit Size 7 7/8"

Type Fluid in Hole Water

Density / Viscosity ///

pH / Fluid Loss ///

Source of Sample ///

Rm @ Meas. Temp ///

Rmf @ Meas. Temp ///

Rmc @ Meas. Temp ///

Source of Rmf / Rmc ///

Rm @ BHT ///

Time Circulation Stopped 10:00 A.M.

Time Logger on Bottom 12:15 P.M.

Maximum Recorded Temperature 108 DEG F

Equipment Number T697

Location Trinidad

Recorded By J. Cappellucci

Witnessed By Mr. Butch Cummings

<<< Fold Here >>>

All interpretations are opinions based on inferences from electrical or other measurements and we cannot and do not guarantee the accuracy or correctness of any interpretation, and we shall not, except in the case of gross or willful negligence on our part, be liable or responsible for any loss, costs, damages, or expenses incurred or sustained by anyone resulting from any interpretation made by any of our officers, agents or employees. These interpretations are also subject to our general terms and conditions set out in our current Price Schedule.

Comments

Well Directions:
Lorencito, 2.2 miles past Compressor station take right,
at next Y stay right up hill, At top of hill take hard left,
second left to location.

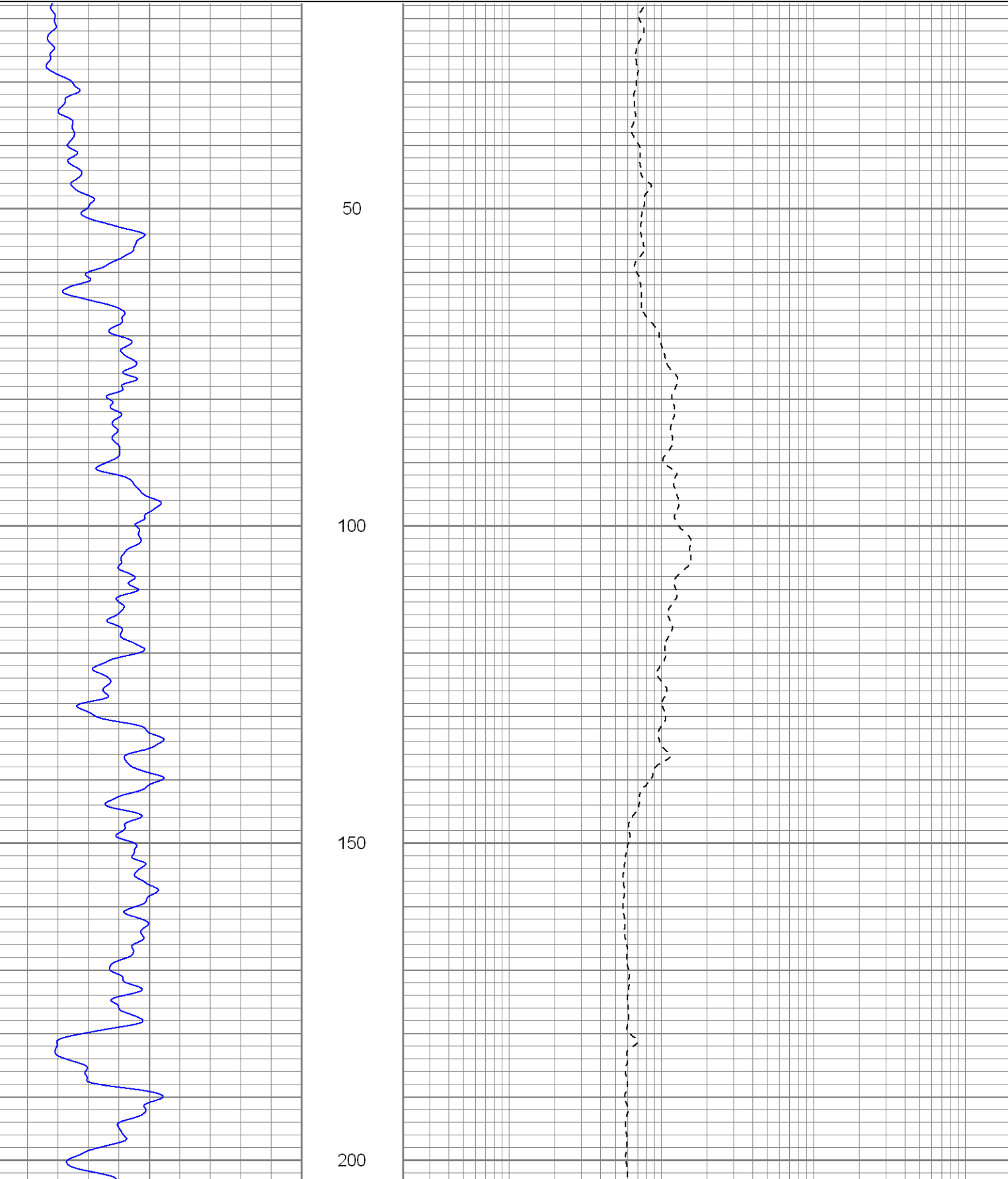


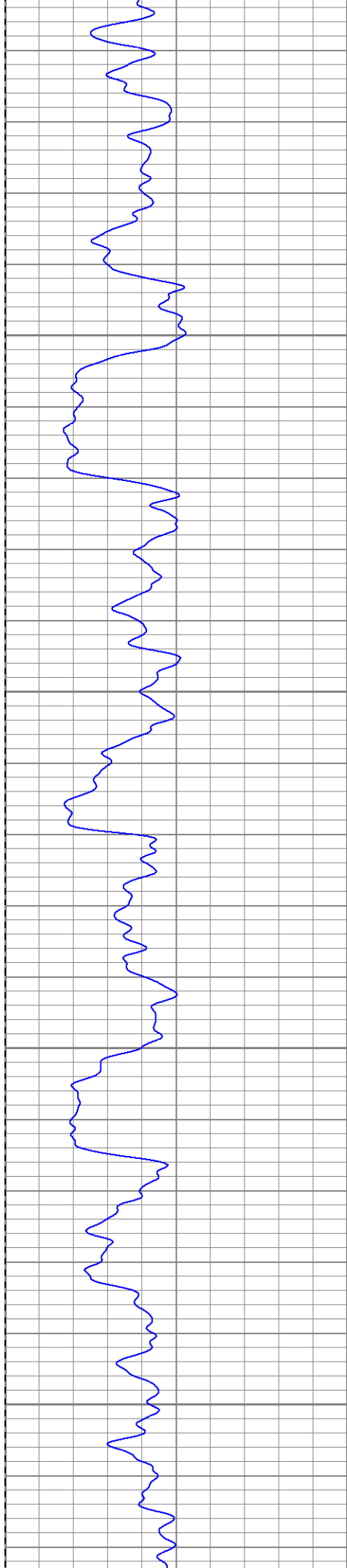
SUPERIOR
Black Lick, Pa.
Mercer, Pa.
Wooster, Oh.
Cleveland, Ok.
Trinidad, Co.

Main Pass

Database File: xtohr1415.db
Dataset Pathname: pass2.1
Presentation Format: dil
Dataset Creation: Mon Apr 07 09:24:55 2008 by Calc Open-Cased 070814
Charted by: Depth in Feet scaled 1:240

0	GR (GAPI)	200	0.2	RILM (Ohm-m)	2000
-200	SP (mV)	0	0.2	RILD (Ohm-m)	2000
			0.2	RLL3 (Ohm-m)	2000



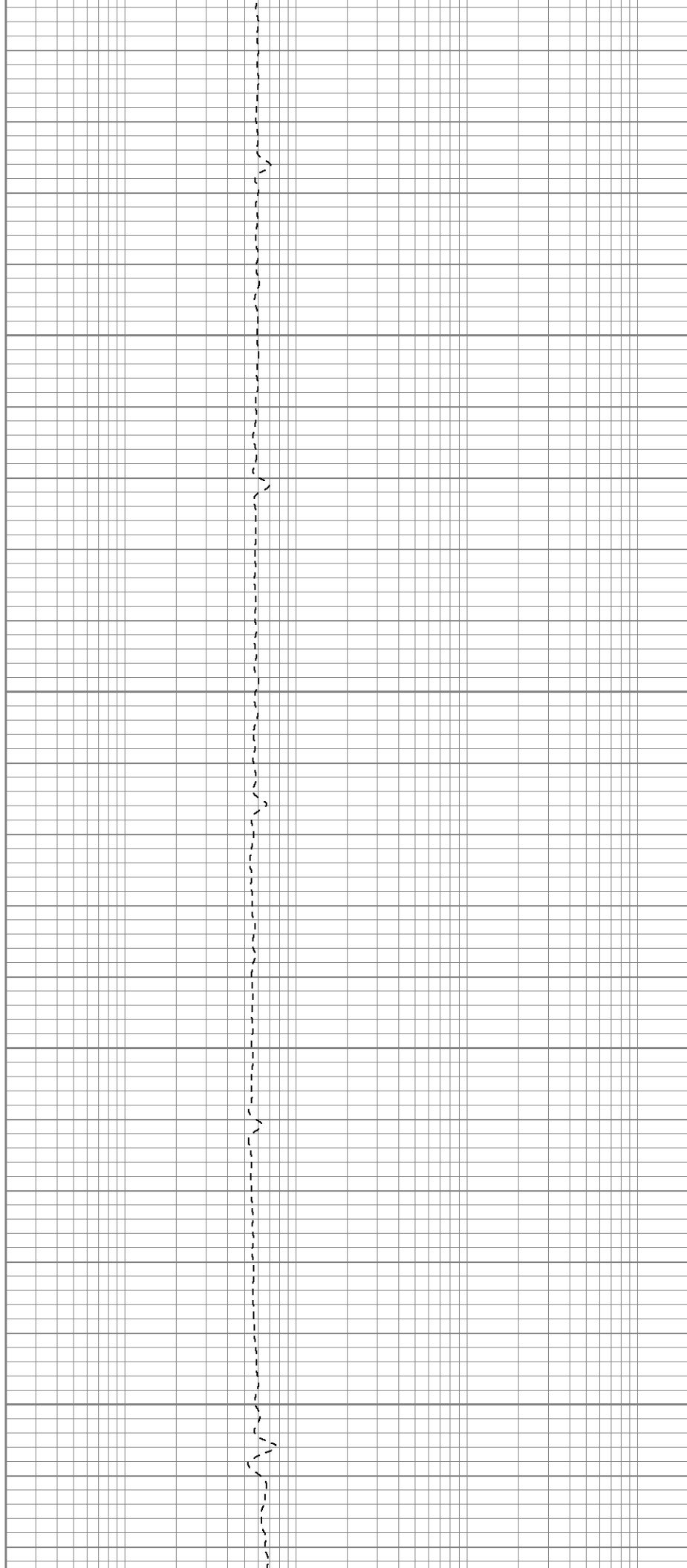


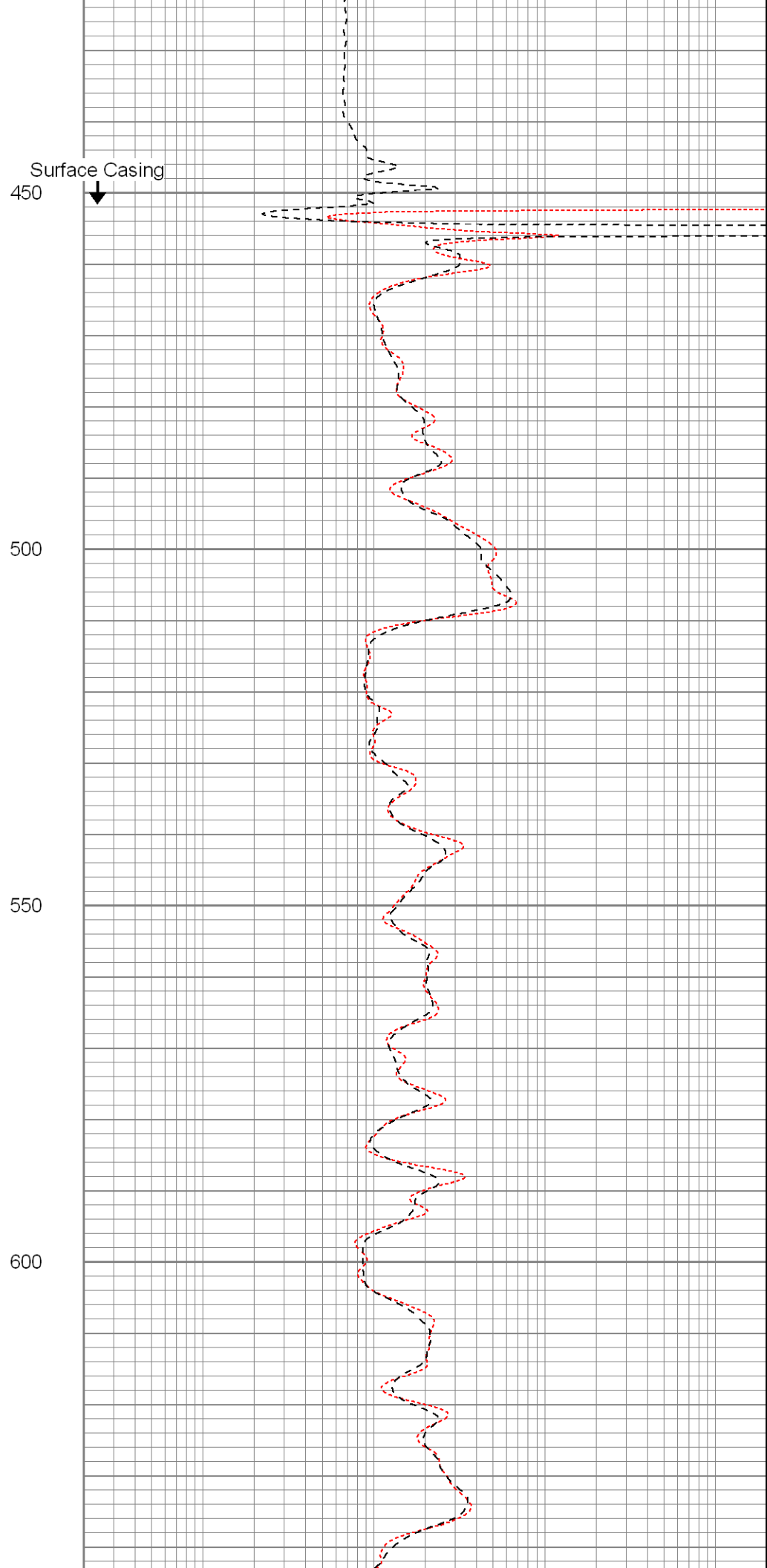
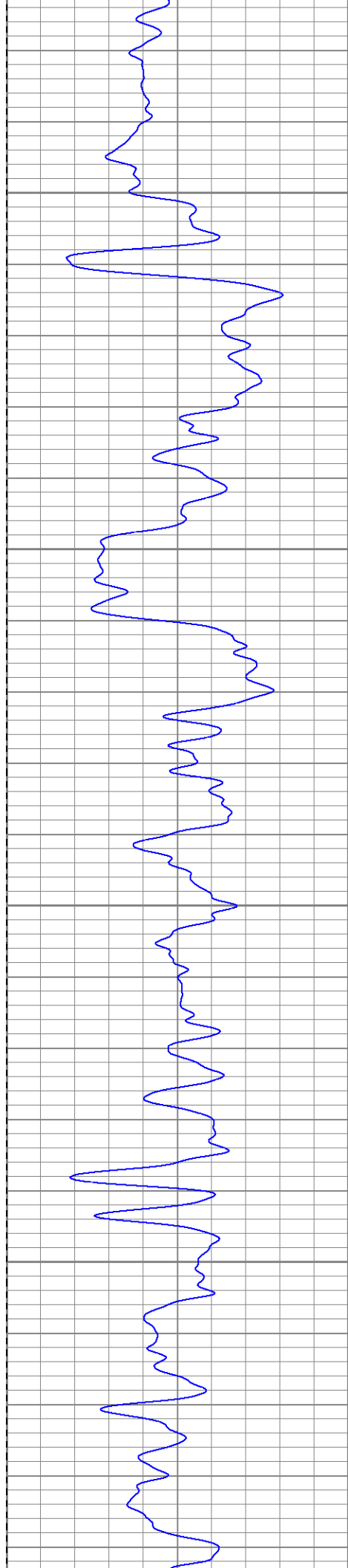
250

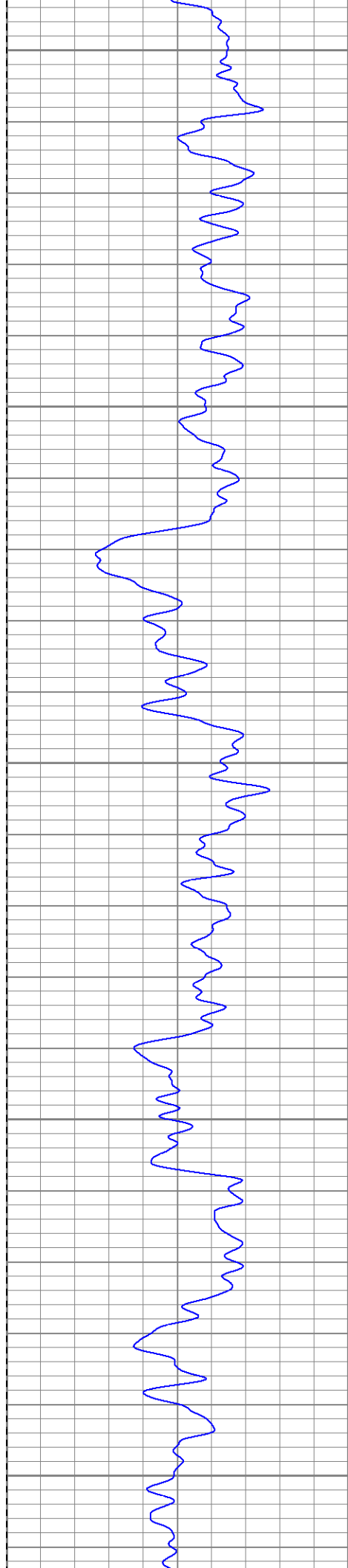
300

350

400







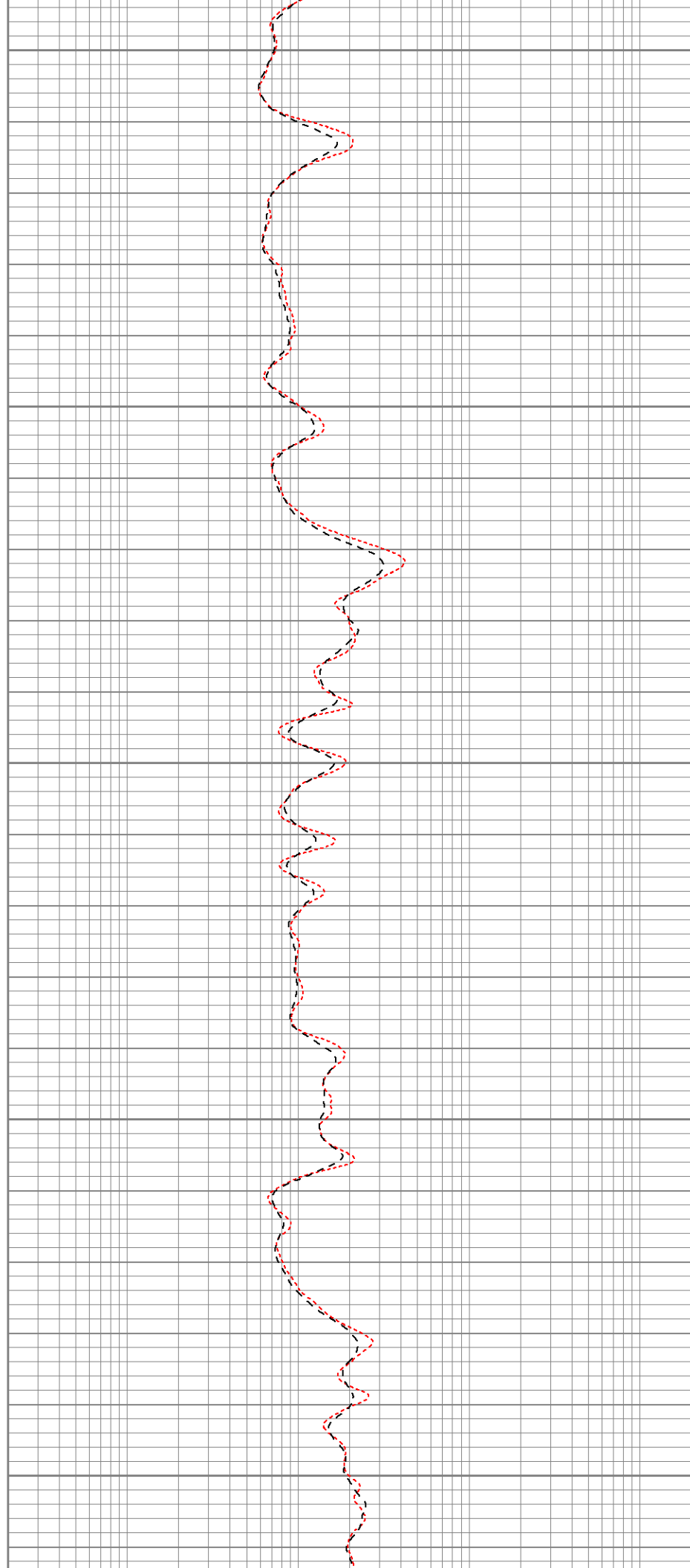
650

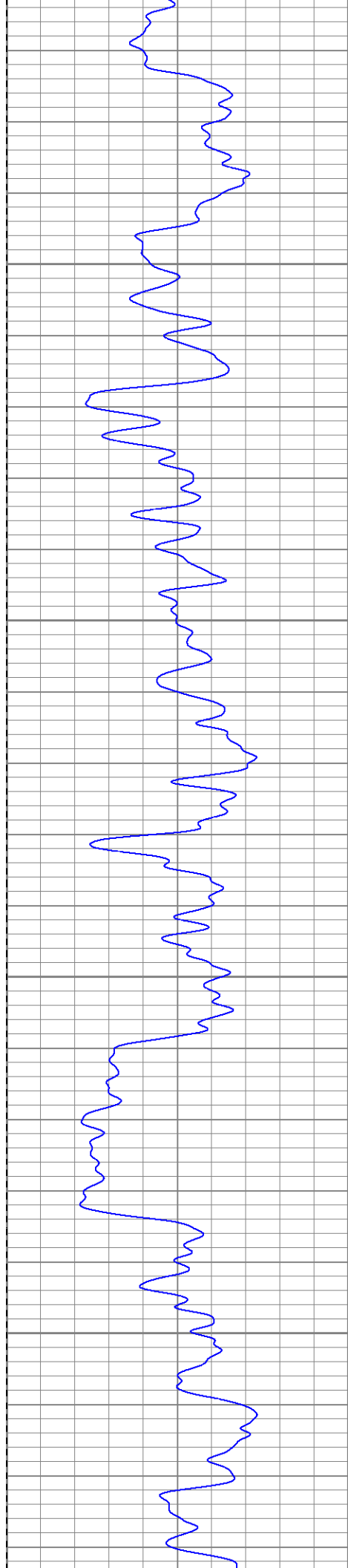
700

750

800

850



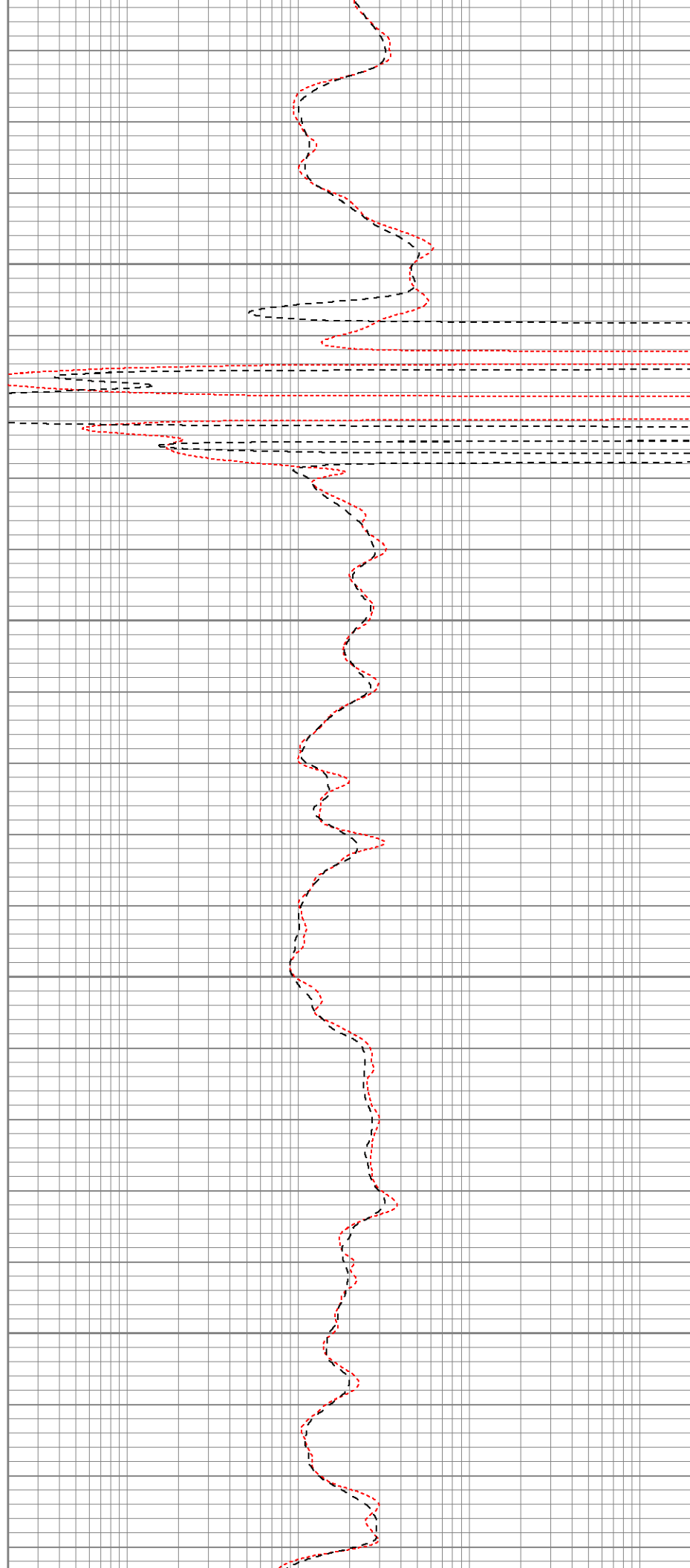


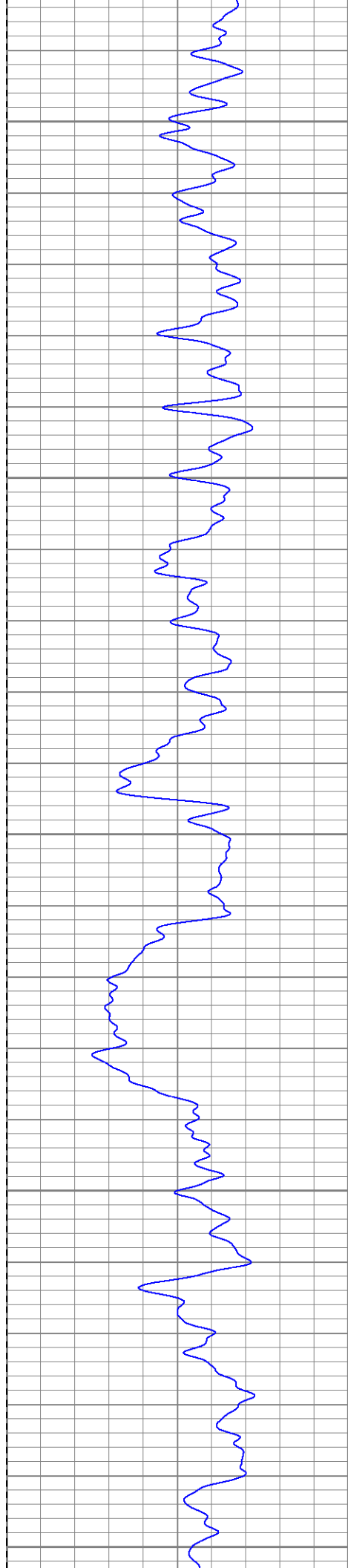
900

950

1000

1050





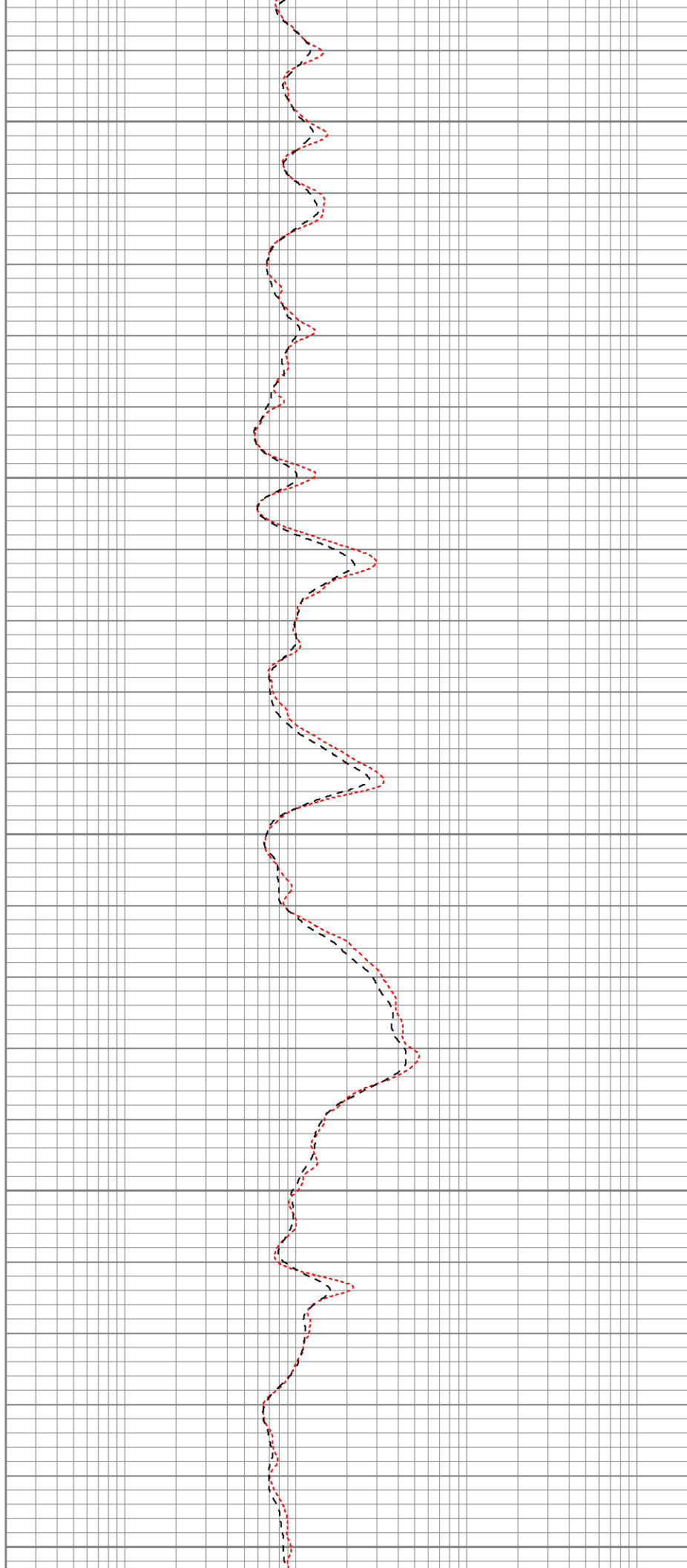
1100

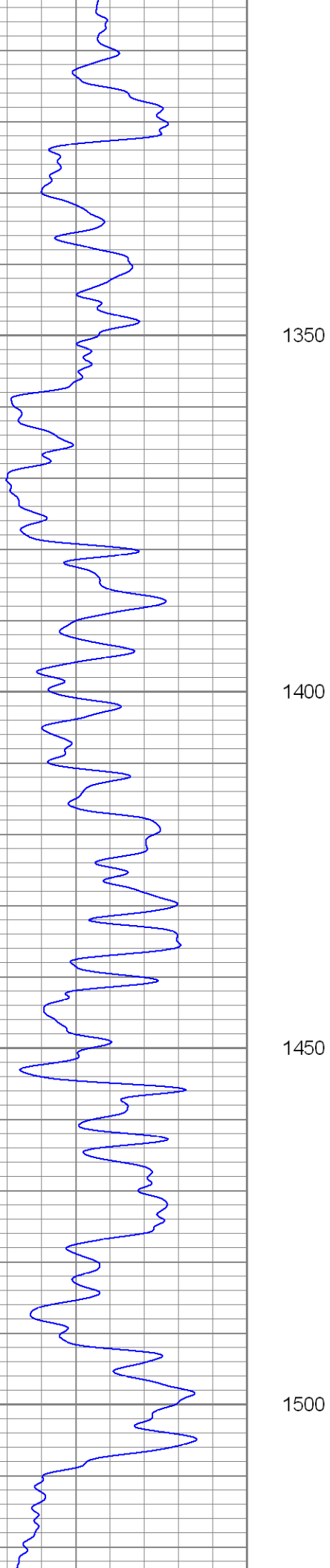
1150

1200

1250

1300



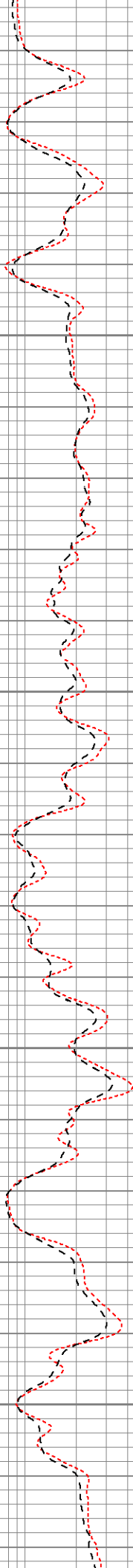


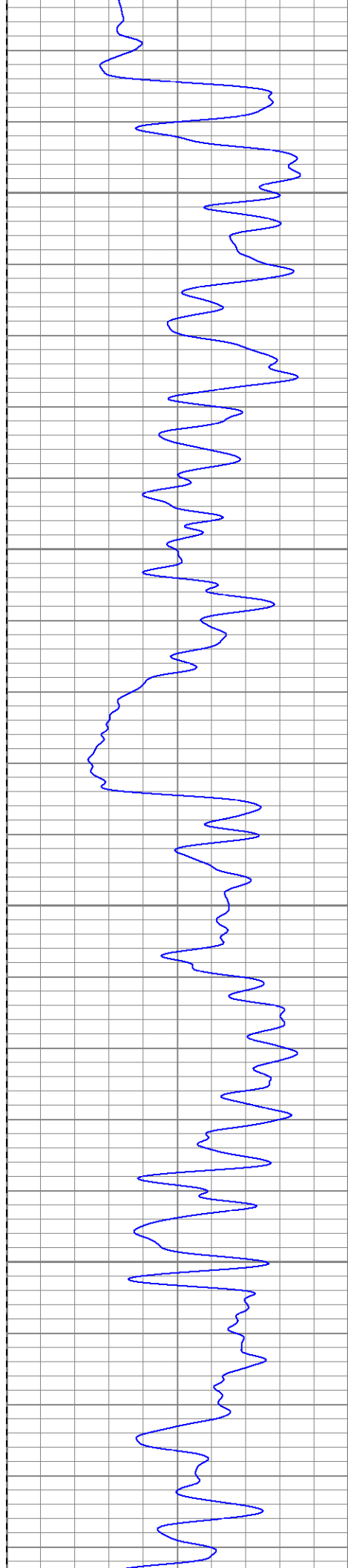
1350

1400

1450

1500



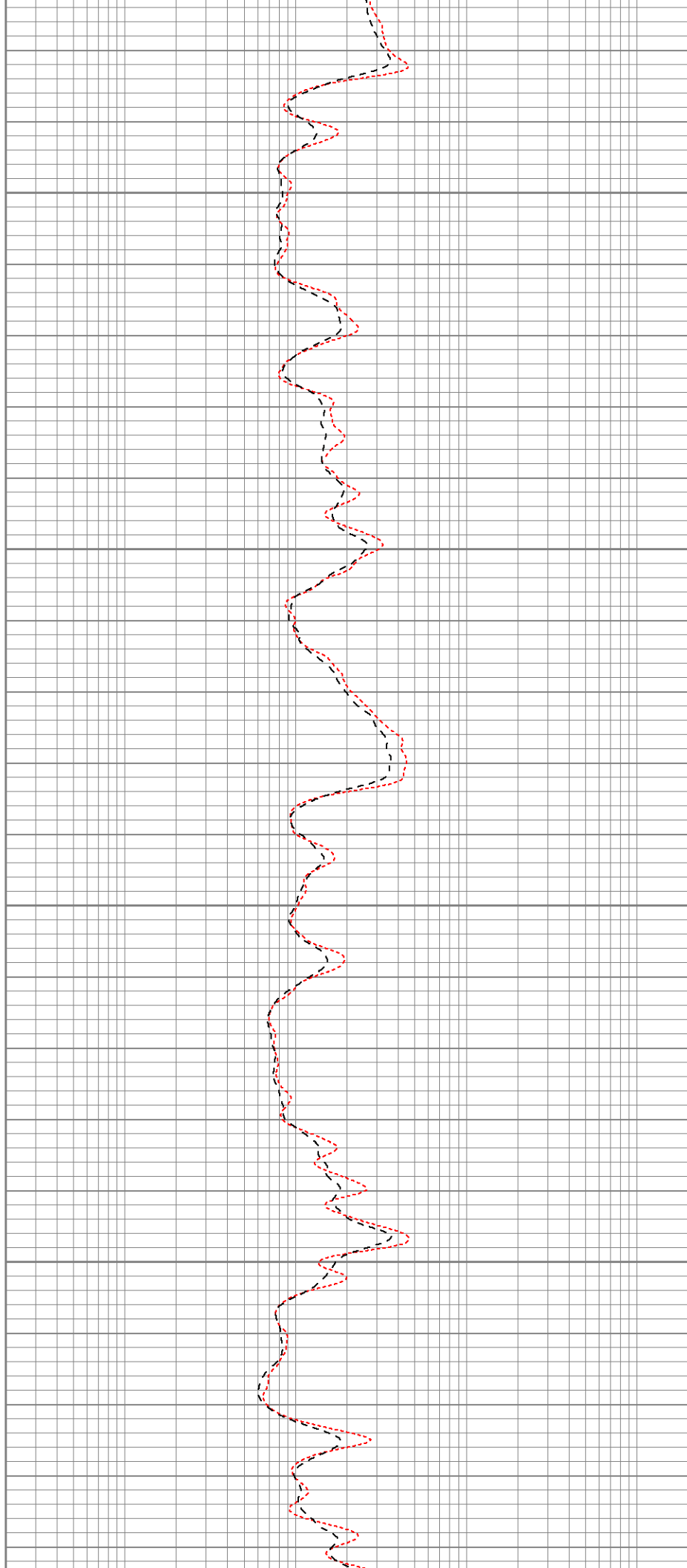


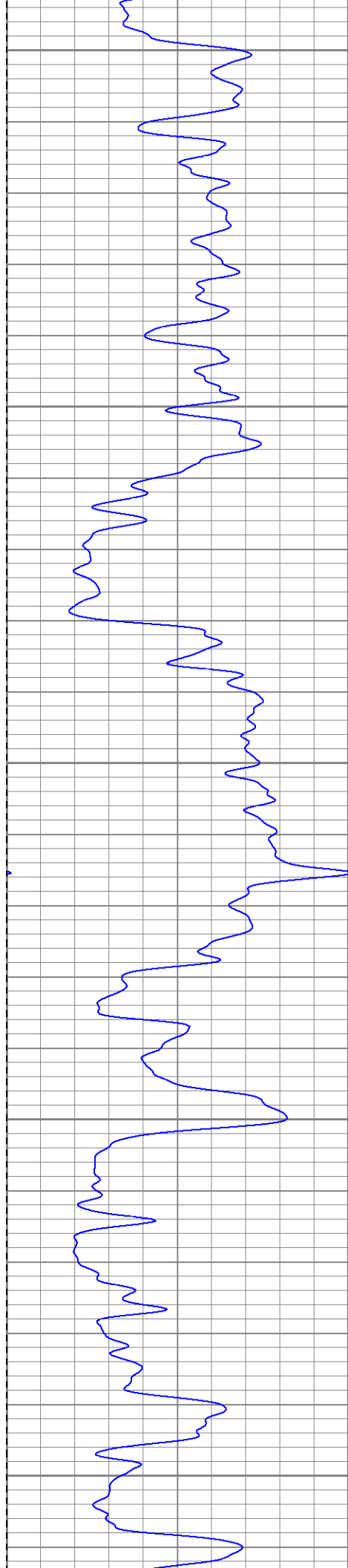
1550

1600

1650

1700





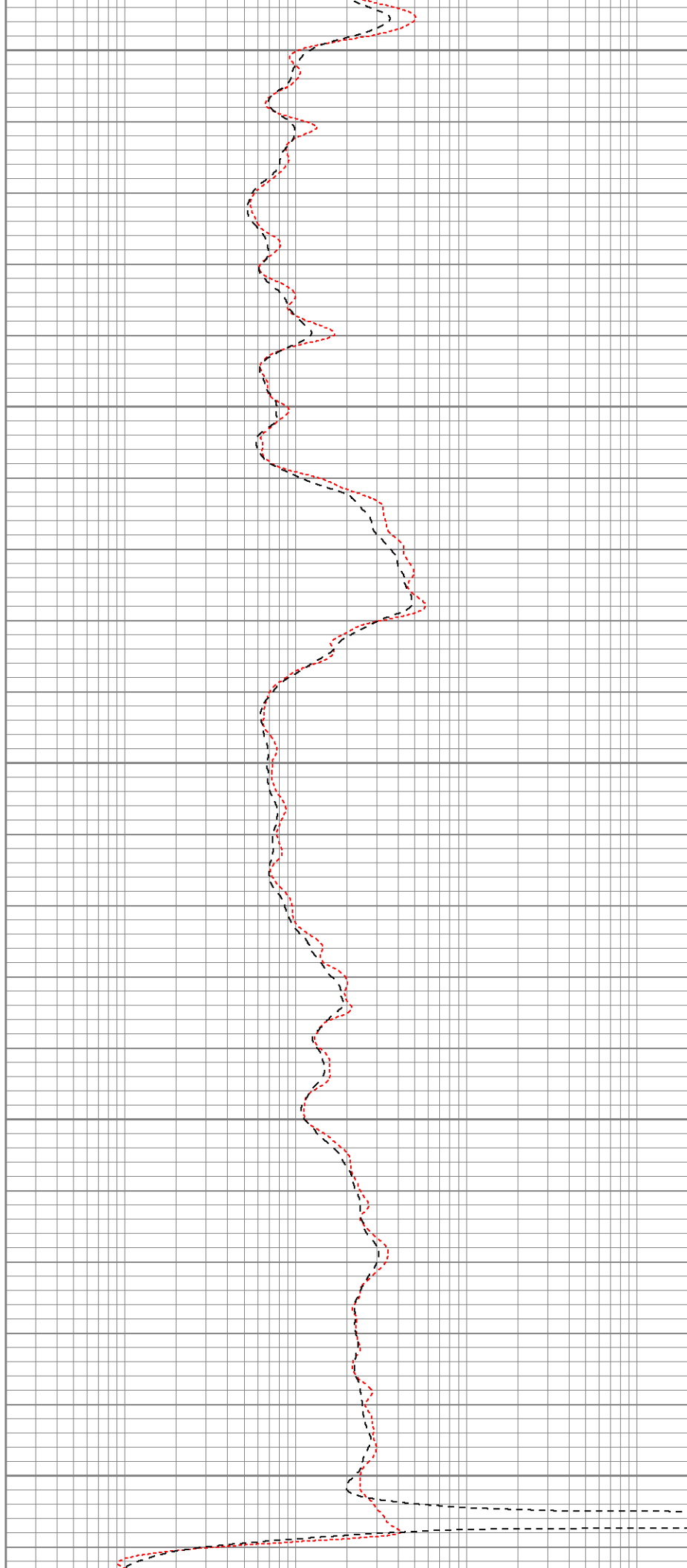
1750

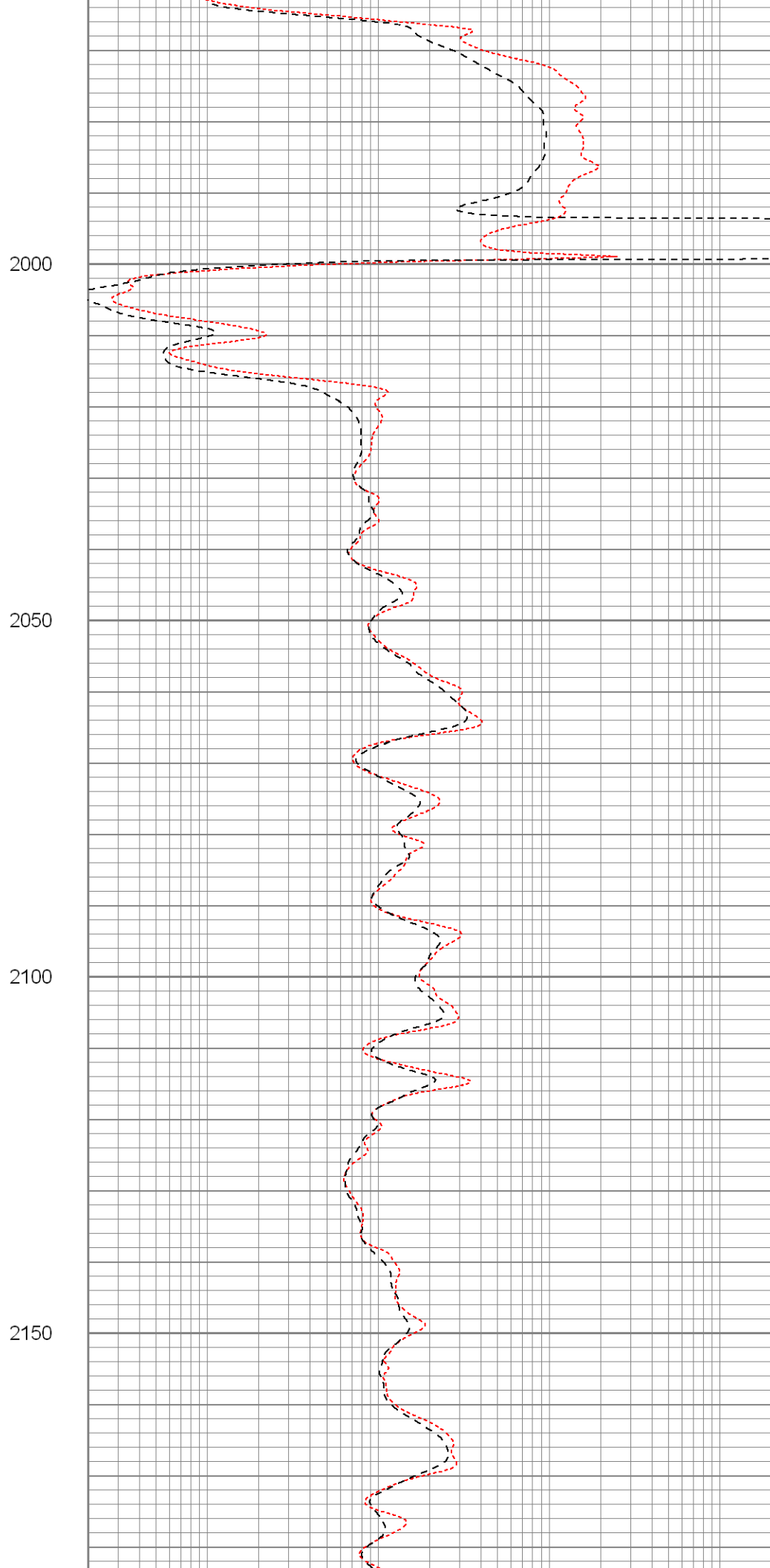
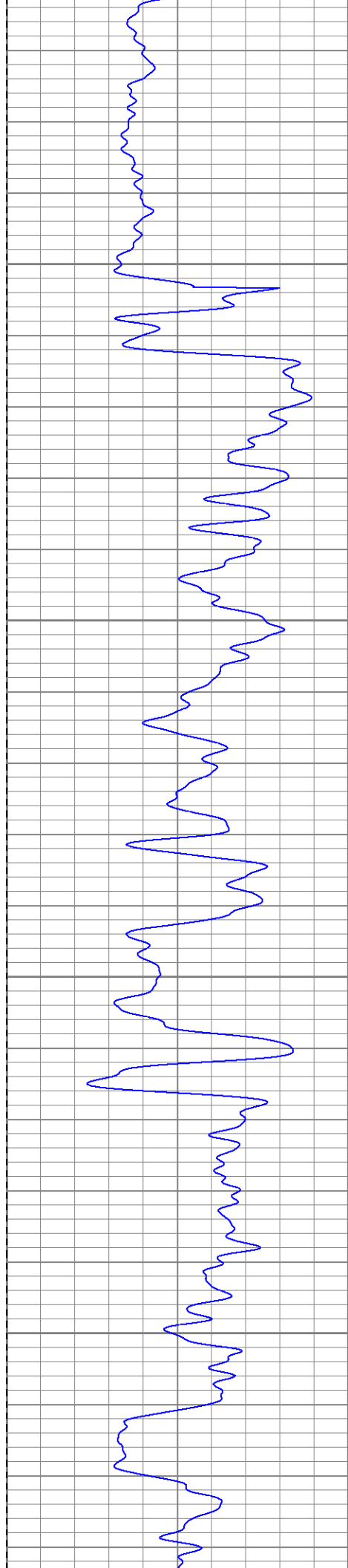
1800

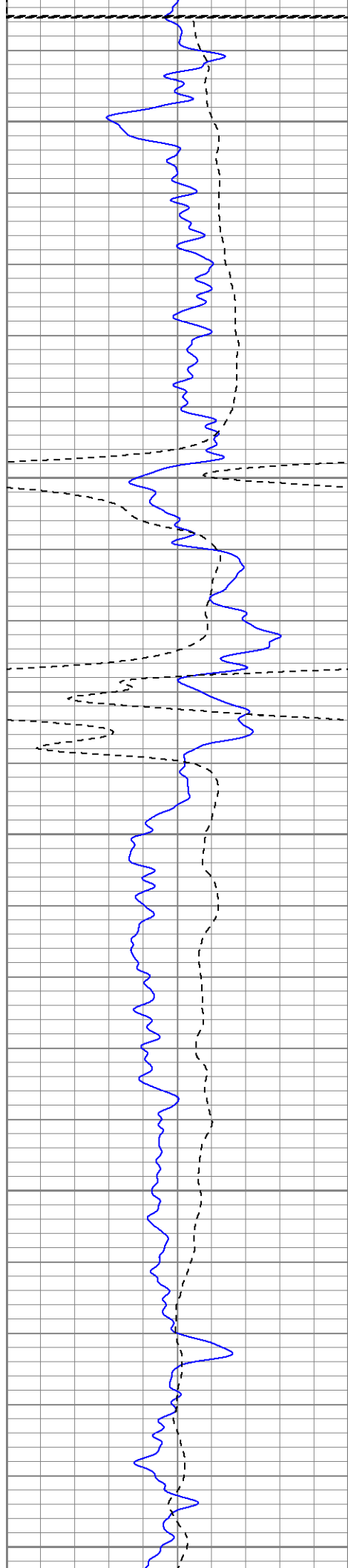
1850

1900

1950







Fluid Level

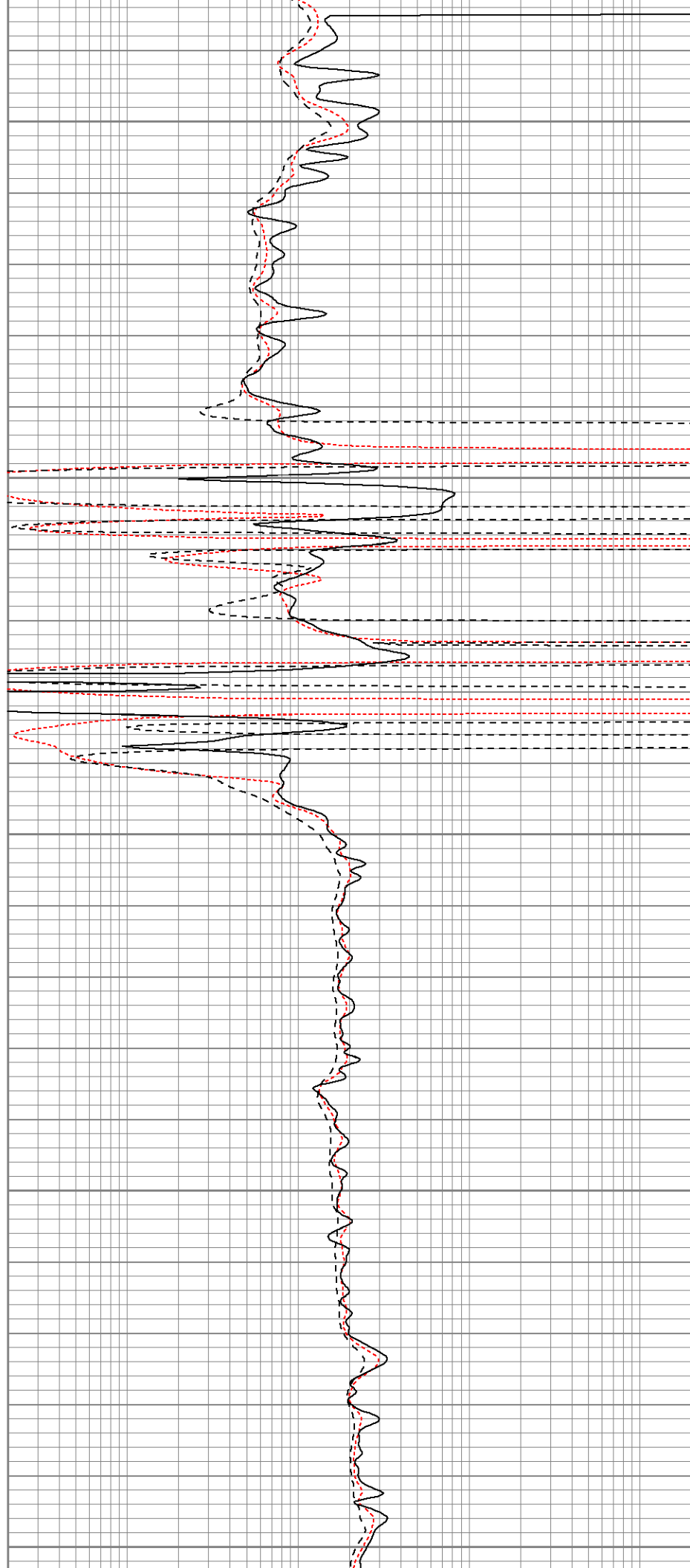
2200

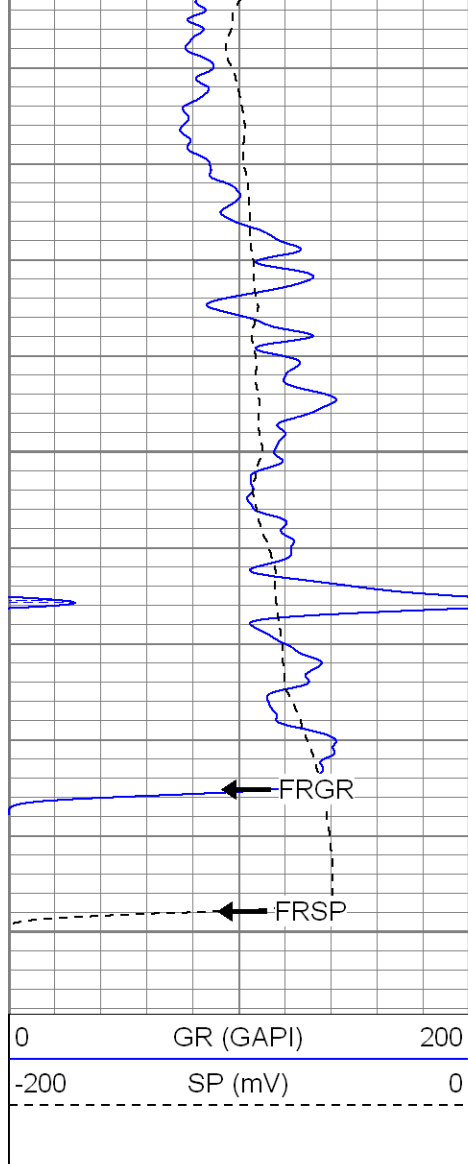
2250

2300

2350

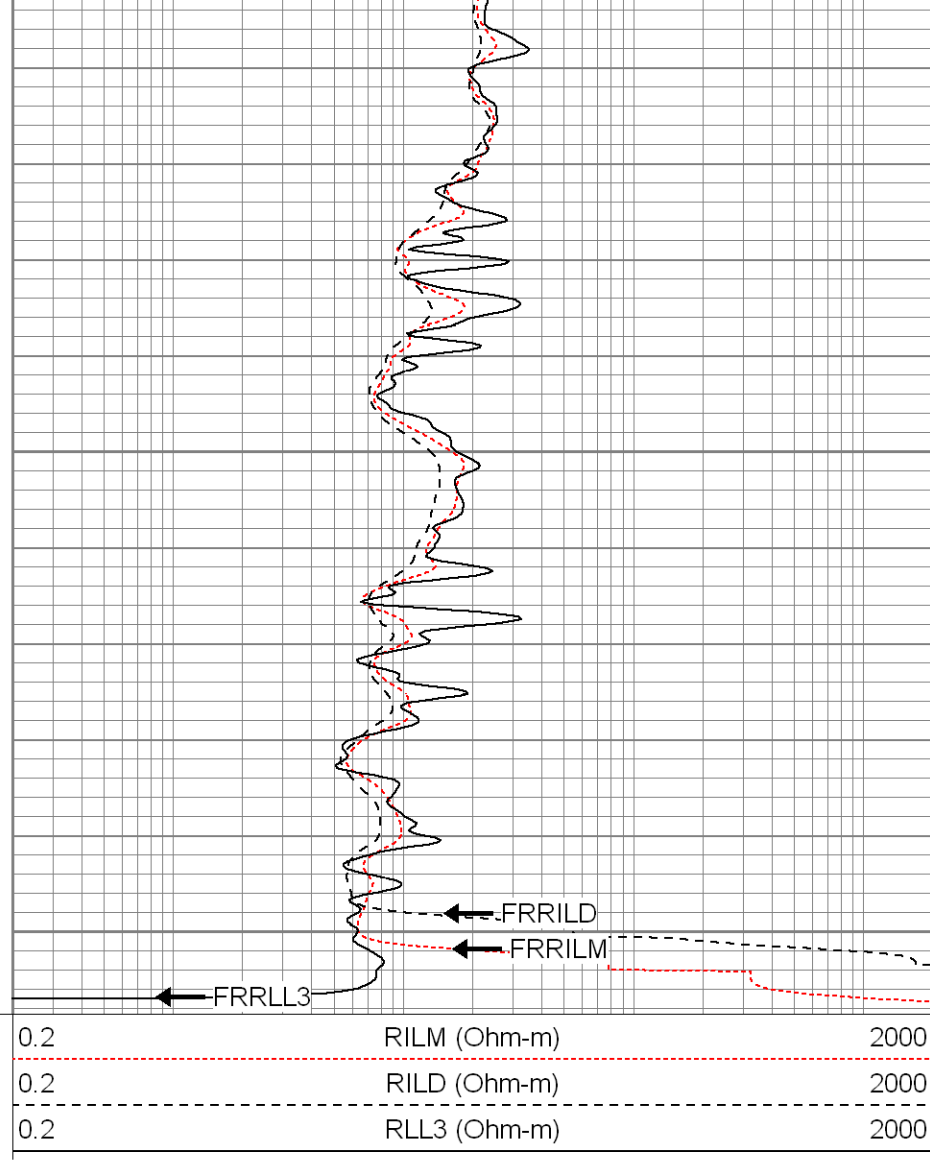
2400





2450

2500



SUPERIOR

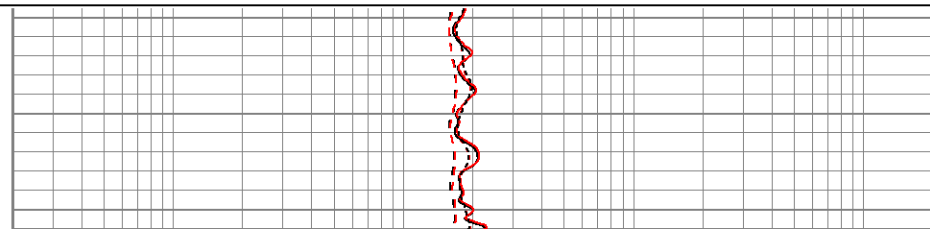
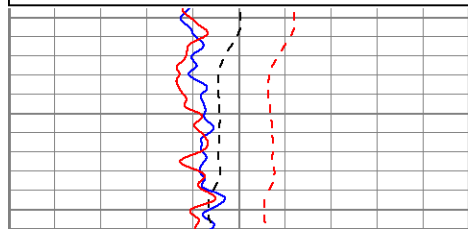
Black Lick, Pa.
Mercer, Pa.
Wooster, Oh.
Cleveland, Ok.
Trinidad, Co.

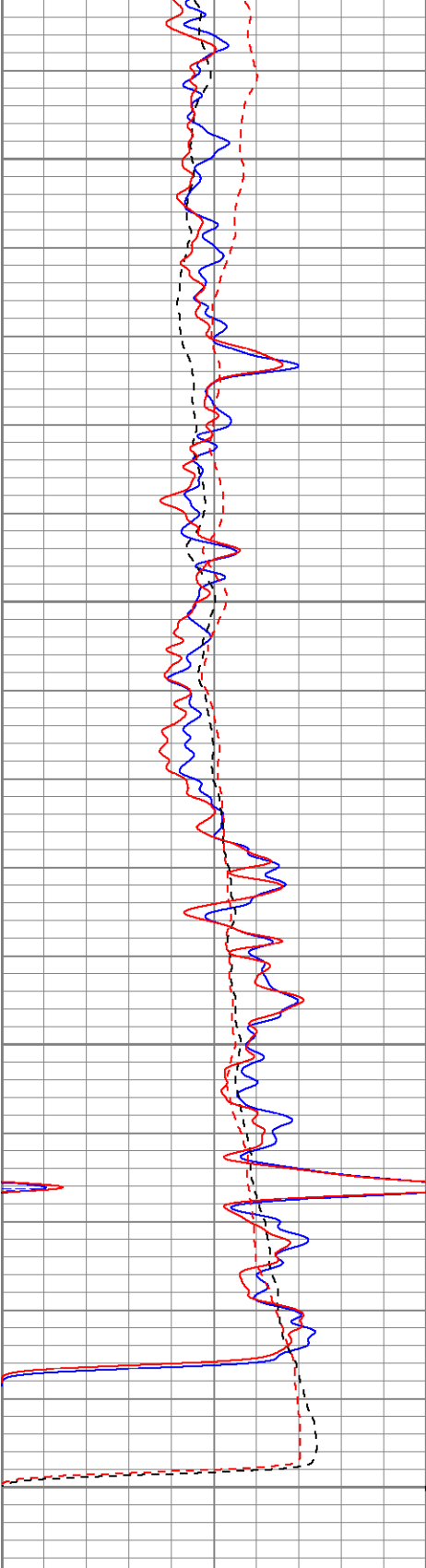
Repeat Pass

Database File: xtohr1415.db
Dataset Pathname: pass1.1
Presentation Format: dil
Dataset Creation: Sat Apr 05 13:38:13 2008 by Calc Open-Cased 070814
Charted by: Depth in Feet scaled 1:240

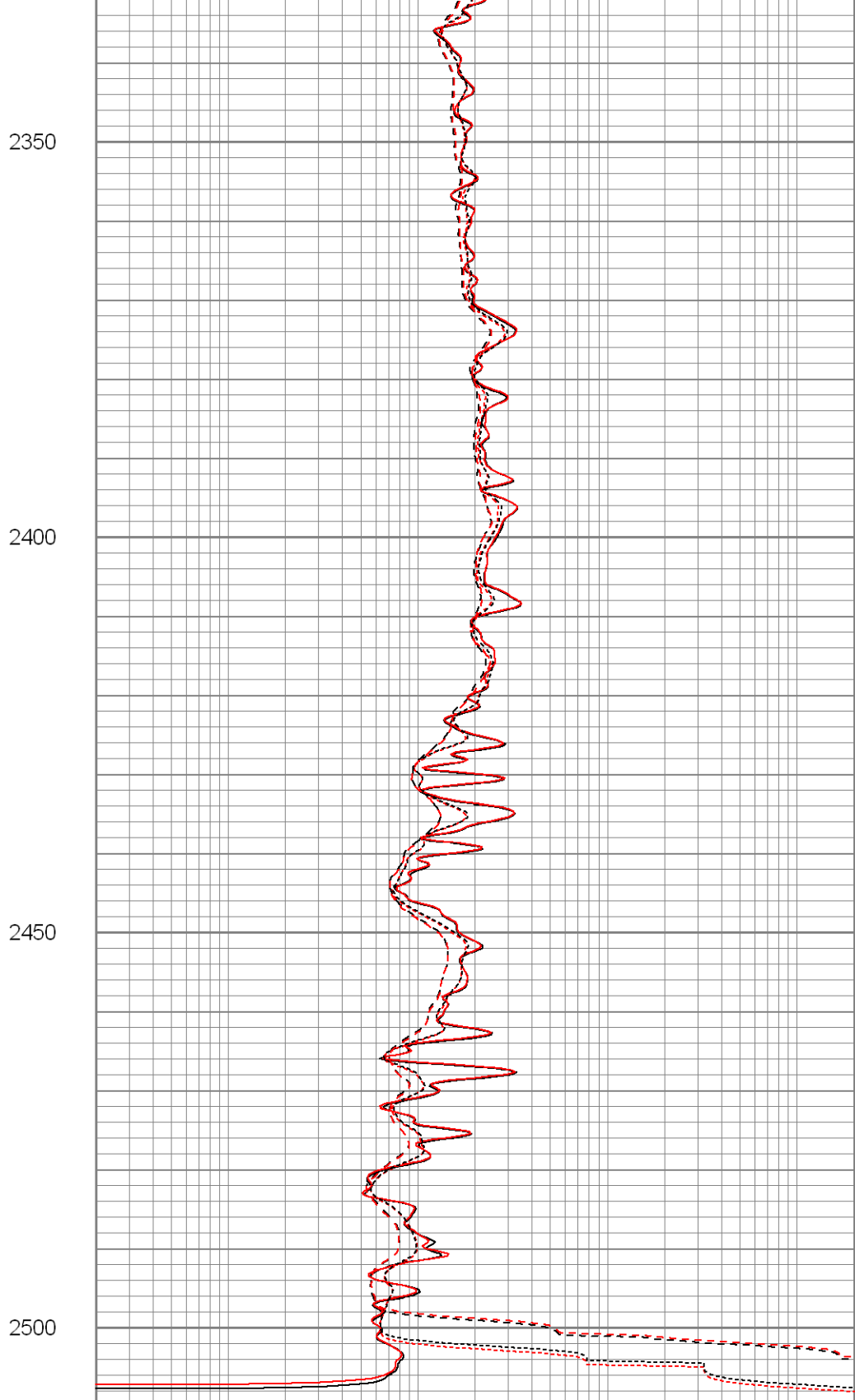
0	GR (GAPI)	200
-200	SP (mV)	0
0	GR-repeat (GAPI)	200
-200	SP-repeat (mV)	0

0.2	RILM (Ohm-m)	2000
0.2	RILD (Ohm-m)	2000
0.2	RLL3 (Ohm-m)	2000
0.2	RLL3-repeat (Ohm-m)	2000
0.2	RILM-repeat (Ohm-m)	2000
0.2	RILD-repeat (Ohm-m)	2000





0	GR (GAPI)	200
-200	SP (mV)	0
0	GR-repeat (GAPI)	200
-200	SP-repeat (mV)	0



0.2	RILM (Ohm-m)	2000
0.2	RILD (Ohm-m)	2000
0.2	RLL3 (Ohm-m)	2000
0.2	RLL3-repeat (Ohm-m)	2000
0.2	RILM-repeat (Ohm-m)	2000
0.2	RILD-repeat (Ohm-m)	2000

Database File: X:\OH\10-08
Dataset Pathname: pass1
Dataset Creation: Sat Apr 05 12:11:16 2008 by Log Open-Cased 070814

Dual Induction Calibration Report

Serial-Model: 5375-G
Surface Cal Performed: Tue Apr 01 11:00:37 2008
Downhole Cal Performed: Tue Apr 01 11:01:24 2008

Surface Calibration

Loop:	Readings			References			Results	
	Air	Loop		Air	Loop		m	b
Deep	0.001	0.620	V	0.000	500.000	mmho-m	807.237	-0.611
Medium	0.003	0.742	V	0.000	550.000	mmho-m	743.848	-2.179
Internal:	Zero	Cal		Zero	Cal		m	b
Deep	0.001	0.620	V	0.000	500.000	mmho-m	807.141	-0.502
Medium	0.003	0.742	V	0.000	550.000	mmho-m	743.959	-2.189

Downhole Calibration

Internal:	Readings			References			Results	
	Zero	Cal		Zero	Cal		m	b
Deep	-0.493	500.241	mmho-m	-0.108	499.951	mmho-m	0.999	0.384
Medium	0.182	550.341	mmho-m	0.009	549.927	mmho-m	1.000	-0.172
Shallow	2.506	0.008	V	500.000	2.000	Ohm-m	189.000	-2.700



Gamma Ray Calibration Report

Serial Number: 2001
Tool Model: OH
Performed: Fri Apr 04 09:53:13 2008

Calibrator Value: 1.0 GAPI

Background Reading: 0.0 cps
Calibrator Reading: 1.0 cps

Sensitivity: 0.2500 GAPI/cps

Sensor	Offset (ft)	Schematic	Description	Len (ft)	OD (in)	Wt (lb)
GR	22.64		None	0.75	1.50	5.00
			GR-OH (2001) 2001	3.56	3.25	40.00
CILD SP	10.60 10.60		DIL-G (5375) Gearhart	21.47	4.00	345.00

