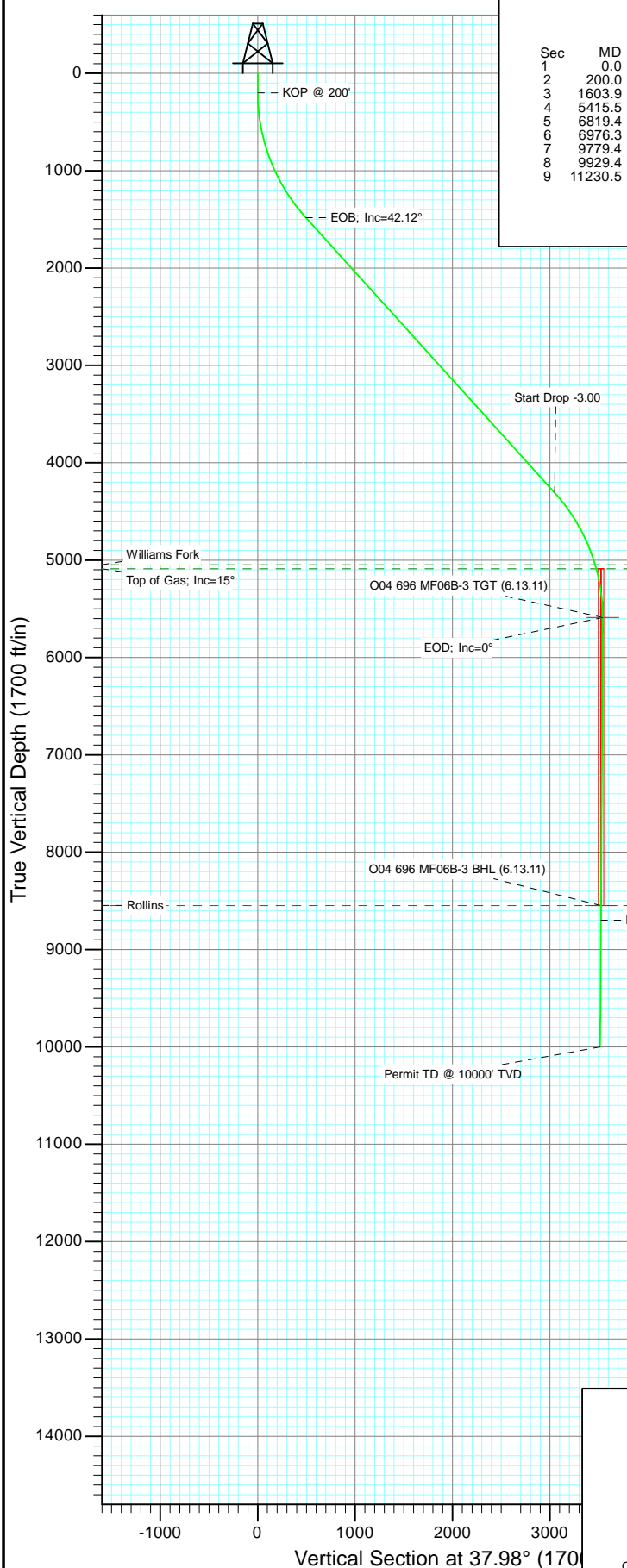
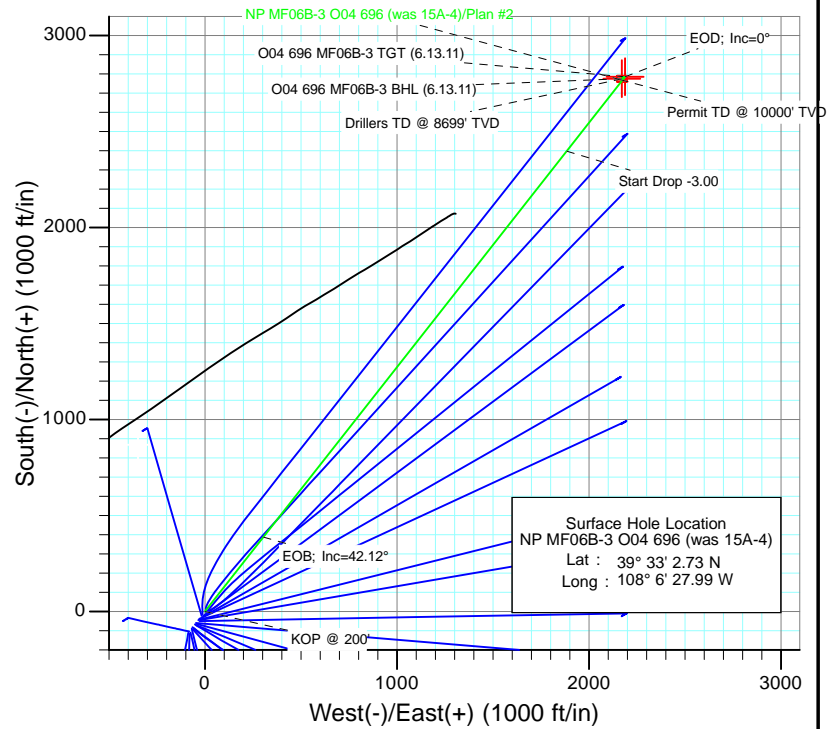




Project: North Piceance  
Site: O04 696 (3rd)  
Well: NP MF06B-3 O04 696 (was 15A-4)  
Wellbore: DD  
Design: Plan #2



SECTION DETAILS										
Sec	MD	Inc	Azi	TVD	+N/-S	+E/-W	Dleg	TFace	VSection	Target
1	0.0	0.00	0.00	0.0	0.0	0.0	0.00	0.00	0.0	
2	200.0	0.00	0.00	200.0	0.0	0.0	0.00	0.00	0.0	
3	1603.9	42.12	38.16	1480.9	387.8	304.7	3.00	38.16	493.2	
4	5415.5	42.12	38.16	4308.1	2397.7	1884.1	0.00	0.00	3049.4	O04 696 MF06B-3 TGT (6.13.11)
5	6819.4	0.00	0.00	5589.0	2785.5	2188.8	3.00	180.00	3542.6	O04 696 MF06B-3 BHL (6.13.11)
6	6976.3	0.39	239.45	5746.0	2785.2	2188.3	0.25	239.45	3542.1	
7	9779.4	0.39	239.45	8549.0	2775.5	2171.8	0.00	0.00	3524.2	
8	9929.4	0.39	239.45	8699.0	2774.9	2170.9	0.00	0.00	3523.2	
9	11230.5	0.39	239.45	10000.0	2770.4	2163.2	0.00	0.00	3514.9	



Azimuths to True North  
Magnetic North: 10.54°

Magnetic Field  
Strength: 52365.2snT  
Dip Angle: 65.79°  
Date: 6/17/2010  
Model: IGRF2010

#### FORMATION TOP DETAILS

TVDPath	MDPath	Formation
5049.0	6271.9	Williams Fork
5089.0	6313.5	Top of Gas; Inc=15°
8549.0	9779.4	Rollins

Plan #2 NP MF06B-3 O04 696 (was 15A-4) 95xxx; LR WELL @ 6044.0ft (Original Well Elev) North American Datum 1983 Well NP MF06B-3 O04 696 (was 15A-4), True North							
Type TD	Target No Target (Freehand)	Azimuth 37.98	Origin Type Slot	N/S 0.0	E/W 0.0	From TVD 0.0	
Name	TVD	+N/-S	+E/-W	Latitude		Longitude	
O04 696 MF06B-3 TGT (6.13.11)	5589.0	2785.5	2188.8	39° 33' 30.26 N		108° 6' 0.04 W	
O04 696 MF06B-3 BHL (6.13.11)	8549.0	2775.5	2171.8	39° 33' 30.16 N		108° 6' 0.26 W	

## Planning Report

<b>Database:</b>	USA EDM 5000 US Multi Users DB	<b>Local Co-ordinate Reference:</b>	Well NP MF06B-3 O04 696 (was 15A-4)
<b>Company:</b>	EnCana Oil & Gas (USA) Inc	<b>TVD Reference:</b>	WELL @ 6044.0ft (Original Well Elev)
<b>Project:</b>	North Piceance	<b>MD Reference:</b>	WELL @ 6044.0ft (Original Well Elev)
<b>Site:</b>	O04 696 (3rd)	<b>North Reference:</b>	True
<b>Well:</b>	NP MF06B-3 O04 696 (was 15A-4)	<b>Survey Calculation Method:</b>	Minimum Curvature
<b>Wellbore:</b>	DD		
<b>Design:</b>	Plan #2		

<b>Project</b>	North Piceance		
<b>Map System:</b>	US State Plane 1983	<b>System Datum:</b>	Mean Sea Level
<b>Geo Datum:</b>	North American Datum 1983		
<b>Map Zone:</b>	Colorado Central Zone		

<b>Site</b>	O04 696 (3rd)			
<b>Site Position:</b>		<b>Northing:</b>	1,635,941.08 ft	<b>Latitude:</b> 39° 33' 1.64 N
<b>From:</b>	Lat/Long	<b>Easting:</b>	2,264,673.43 ft	<b>Longitude:</b> 108° 6' 29.09 W
<b>Position Uncertainty:</b>	0.0 ft	<b>Slot Radius:</b>	13.200 in	<b>Grid Convergence:</b> -1.64 °

<b>Well</b>	NP MF06B-3 O04 696 (was 15A-4)			
<b>Well Position</b>	<b>+N/-S</b>	0.0 ft	<b>Northing:</b>	1,636,048.83 ft
	<b>+E/-W</b>	0.0 ft	<b>Easting:</b>	2,264,762.72 ft
<b>Position Uncertainty</b>		0.0 ft	<b>Wellhead Elevation:</b>	ft
			<b>Ground Level:</b>	6,022.0 ft

<b>Wellbore</b>	DD				
<b>Magnetics</b>	<b>Model Name</b>	<b>Sample Date</b>	<b>Declination (°)</b>	<b>Dip Angle (°)</b>	<b>Field Strength (nT)</b>
	IGRF2010	6/17/2010	10.54	65.79	52,365

<b>Design</b>	Plan #2			
<b>Audit Notes:</b>				
<b>Version:</b>	<b>Phase:</b>	PLAN	<b>Tie On Depth:</b>	0.0
<b>Vertical Section:</b>	<b>Depth From (TVD) (ft)</b>	<b>+N/-S (ft)</b>	<b>+E/-W (ft)</b>	<b>Direction (°)</b>
	0.0	0.0	0.0	37.98

<b>Plan Sections</b>										
Measured Depth (ft)	Inclination (°)	Azimuth (°)	Vertical Depth (ft)	+N/-S (ft)	+E/-W (ft)	Dogleg Rate (°/100ft)	Build Rate (°/100ft)	Turn Rate (°/100ft)	TFO (°)	Target
0.0	0.00	0.00	0.0	0.0	0.0	0.00	0.00	0.00	0.00	
200.0	0.00	0.00	200.0	0.0	0.0	0.00	0.00	0.00	0.00	
1,603.9	42.12	38.16	1,480.9	387.8	304.7	3.00	3.00	0.00	38.16	
5,415.5	42.12	38.16	4,308.1	2,397.7	1,884.1	0.00	0.00	0.00	0.00	
6,819.4	0.00	0.00	5,589.0	2,785.5	2,188.8	3.00	-3.00	0.00	180.00	O04 696 MF06B-3 TC
6,976.3	0.39	239.45	5,746.0	2,785.2	2,188.3	0.25	0.25	-76.81	239.45	
9,779.4	0.39	239.45	8,549.0	2,775.5	2,171.8	0.00	0.00	0.00	0.00	O04 696 MF06B-3 B+
9,929.4	0.39	239.45	8,699.0	2,774.9	2,170.9	0.00	0.00	0.00	0.00	
11,230.5	0.39	239.45	10,000.0	2,770.4	2,163.2	0.00	0.00	0.00	0.00	

# Planning Report

**Database:** USA EDM 5000 US Multi Users DB  
**Company:** EnCana Oil & Gas (USA) Inc  
**Project:** North Piceance  
**Site:** O04 696 (3rd)  
**Well:** NP MF06B-3 O04 696 (was 15A-4)  
**Wellbore:** DD  
**Design:** Plan #2

**Local Co-ordinate Reference:** Well NP MF06B-3 O04 696 (was 15A-4)  
**TVD Reference:** WELL @ 6044.0ft (Original Well Elev)  
**MD Reference:** WELL @ 6044.0ft (Original Well Elev)  
**North Reference:** True  
**Survey Calculation Method:** Minimum Curvature

## Planned Survey

Measured Depth (ft)	Inclination (°)	Azimuth (°)	Vertical Depth (ft)	+N/-S (ft)	+E/-W (ft)	Vertical Section (ft)	Dogleg Rate (°/100ft)	Build Rate (°/100ft)	Comments / Formations
0.0	0.00	0.00	0.0	0.0	0.0	0.0	0.00	0.00	
30.0	0.00	0.00	30.0	0.0	0.0	0.0	0.00	0.00	
60.0	0.00	0.00	60.0	0.0	0.0	0.0	0.00	0.00	
90.0	0.00	0.00	90.0	0.0	0.0	0.0	0.00	0.00	
120.0	0.00	0.00	120.0	0.0	0.0	0.0	0.00	0.00	
150.0	0.00	0.00	150.0	0.0	0.0	0.0	0.00	0.00	
180.0	0.00	0.00	180.0	0.0	0.0	0.0	0.00	0.00	
200.0	0.00	0.00	200.0	0.0	0.0	0.0	0.00	0.00	KOP @ 200'
210.0	0.30	38.16	210.0	0.0	0.0	0.0	3.00	3.00	
240.0	1.20	38.16	240.0	0.3	0.3	0.4	3.00	3.00	
270.0	2.10	38.16	270.0	1.0	0.8	1.3	3.00	3.00	
300.0	3.00	38.16	300.0	2.1	1.6	2.6	3.00	3.00	
330.0	3.90	38.16	329.9	3.5	2.7	4.4	3.00	3.00	
360.0	4.80	38.16	359.8	5.3	4.1	6.7	3.00	3.00	
390.0	5.70	38.16	389.7	7.4	5.8	9.4	3.00	3.00	
420.0	6.60	38.16	419.5	10.0	7.8	12.7	3.00	3.00	
450.0	7.50	38.16	449.3	12.8	10.1	16.3	3.00	3.00	
480.0	8.40	38.16	479.0	16.1	12.7	20.5	3.00	3.00	
510.0	9.30	38.16	508.6	19.7	15.5	25.1	3.00	3.00	
540.0	10.20	38.16	538.2	23.7	18.6	30.2	3.00	3.00	
570.0	11.10	38.16	567.7	28.1	22.1	35.7	3.00	3.00	
600.0	12.00	38.16	597.1	32.8	25.8	41.7	3.00	3.00	
630.0	12.90	38.16	626.4	37.9	29.8	48.2	3.00	3.00	
660.0	13.80	38.16	655.6	43.3	34.1	55.1	3.00	3.00	
690.0	14.70	38.16	684.6	49.2	38.6	62.5	3.00	3.00	
720.0	15.60	38.16	713.6	55.3	43.5	70.4	3.00	3.00	
750.0	16.50	38.16	742.4	61.8	48.6	78.6	3.00	3.00	
780.0	17.40	38.16	771.1	68.7	54.0	87.4	3.00	3.00	
810.0	18.30	38.16	799.7	75.9	59.7	96.6	3.00	3.00	
840.0	19.20	38.16	828.1	83.5	65.6	106.2	3.00	3.00	
870.0	20.10	38.16	856.3	91.5	71.9	116.3	3.00	3.00	
900.0	21.00	38.16	884.4	99.7	78.4	126.9	3.00	3.00	
930.0	21.90	38.16	912.4	108.4	85.2	137.8	3.00	3.00	
960.0	22.80	38.16	940.1	117.3	92.2	149.2	3.00	3.00	
990.0	23.70	38.16	967.7	126.7	99.5	161.1	3.00	3.00	
1,020.0	24.60	38.16	995.0	136.3	107.1	173.3	3.00	3.00	
1,050.0	25.50	38.16	1,022.2	146.3	115.0	186.0	3.00	3.00	
1,080.0	26.40	38.16	1,049.2	156.6	123.1	199.2	3.00	3.00	
1,110.0	27.30	38.16	1,076.0	167.3	131.4	212.7	3.00	3.00	
1,140.0	28.20	38.16	1,102.5	178.2	140.1	226.7	3.00	3.00	
1,170.0	29.10	38.16	1,128.8	189.6	149.0	241.1	3.00	3.00	
1,200.0	30.00	38.16	1,154.9	201.2	158.1	255.9	3.00	3.00	
1,230.0	30.90	38.16	1,180.8	213.1	167.5	271.1	3.00	3.00	
1,260.0	31.80	38.16	1,206.4	225.4	177.1	286.7	3.00	3.00	
1,290.0	32.70	38.16	1,231.8	238.0	187.0	302.7	3.00	3.00	
1,320.0	33.60	38.16	1,256.9	250.9	197.2	319.1	3.00	3.00	
1,350.0	34.50	38.16	1,281.8	264.1	207.5	335.9	3.00	3.00	
1,380.0	35.40	38.16	1,306.3	277.6	218.2	353.1	3.00	3.00	
1,410.0	36.30	38.16	1,330.7	291.4	229.0	370.6	3.00	3.00	
1,440.0	37.20	38.16	1,354.7	305.6	240.1	388.6	3.00	3.00	
1,470.0	38.10	38.16	1,378.5	320.0	251.4	406.9	3.00	3.00	
1,500.0	39.00	38.16	1,401.9	334.7	263.0	425.6	3.00	3.00	

## Planning Report

<b>Database:</b>	USA EDM 5000 US Multi Users DB	<b>Local Co-ordinate Reference:</b>	Well NP MF06B-3 O04 696 (was 15A-4)
<b>Company:</b>	EnCana Oil & Gas (USA) Inc	<b>TVD Reference:</b>	WELL @ 6044.0ft (Original Well Elev)
<b>Project:</b>	North Piceance	<b>MD Reference:</b>	WELL @ 6044.0ft (Original Well Elev)
<b>Site:</b>	O04 696 (3rd)	<b>North Reference:</b>	True
<b>Well:</b>	NP MF06B-3 O04 696 (was 15A-4)	<b>Survey Calculation Method:</b>	Minimum Curvature
<b>Wellbore:</b>	DD		
<b>Design:</b>	Plan #2		

### Planned Survey

Measured Depth (ft)	Inclination (°)	Azimuth (°)	Vertical Depth (ft)	+N/-S (ft)	+E/-W (ft)	Vertical Section (ft)	Dogleg Rate (°/100ft)	Build Rate (°/100ft)	Comments / Formations
1,530.0	39.90	38.16	1,425.1	349.6	274.7	444.7	3.00	3.00	
1,560.0	40.80	38.16	1,447.9	364.9	286.7	464.1	3.00	3.00	
1,590.0	41.70	38.16	1,470.5	380.5	299.0	483.9	3.00	3.00	
1,603.9	42.12	38.16	1,480.9	387.8	304.7	493.2	3.00	3.00	EOB; Inc=42.12°
1,620.0	42.12	38.16	1,492.8	396.3	311.4	504.0	0.00	0.00	
1,650.0	42.12	38.16	1,515.0	412.1	323.8	524.1	0.00	0.00	
1,680.0	42.12	38.16	1,537.3	427.9	336.2	544.2	0.00	0.00	
1,710.0	42.12	38.16	1,559.5	443.7	348.7	564.3	0.00	0.00	
1,740.0	42.12	38.16	1,581.8	459.5	361.1	584.4	0.00	0.00	
1,770.0	42.12	38.16	1,604.0	475.4	373.5	604.6	0.00	0.00	
1,800.0	42.12	38.16	1,626.3	491.2	386.0	624.7	0.00	0.00	
1,830.0	42.12	38.16	1,648.6	507.0	398.4	644.8	0.00	0.00	
1,860.0	42.12	38.16	1,670.8	522.8	410.8	664.9	0.00	0.00	
1,890.0	42.12	38.16	1,693.1	538.6	423.3	685.0	0.00	0.00	
1,920.0	42.12	38.16	1,715.3	554.5	435.7	705.2	0.00	0.00	
1,950.0	42.12	38.16	1,737.6	570.3	448.1	725.3	0.00	0.00	
1,980.0	42.12	38.16	1,759.8	586.1	460.6	745.4	0.00	0.00	
2,010.0	42.12	38.16	1,782.1	601.9	473.0	765.5	0.00	0.00	
2,040.0	42.12	38.16	1,804.3	617.7	485.4	785.6	0.00	0.00	
2,070.0	42.12	38.16	1,826.6	633.6	497.8	805.8	0.00	0.00	
2,100.0	42.12	38.16	1,848.8	649.4	510.3	825.9	0.00	0.00	
2,130.0	42.12	38.16	1,871.1	665.2	522.7	846.0	0.00	0.00	
2,160.0	42.12	38.16	1,893.3	681.0	535.1	866.1	0.00	0.00	
2,190.0	42.12	38.16	1,915.6	696.8	547.6	886.2	0.00	0.00	
2,220.0	42.12	38.16	1,937.8	712.7	560.0	906.4	0.00	0.00	
2,250.0	42.12	38.16	1,960.1	728.5	572.4	926.5	0.00	0.00	
2,280.0	42.12	38.16	1,982.4	744.3	584.9	946.6	0.00	0.00	
2,310.0	42.12	38.16	2,004.6	760.1	597.3	966.7	0.00	0.00	
2,340.0	42.12	38.16	2,026.9	775.9	609.7	986.8	0.00	0.00	
2,370.0	42.12	38.16	2,049.1	791.8	622.2	1,007.0	0.00	0.00	
2,400.0	42.12	38.16	2,071.4	807.6	634.6	1,027.1	0.00	0.00	
2,430.0	42.12	38.16	2,093.6	823.4	647.0	1,047.2	0.00	0.00	
2,460.0	42.12	38.16	2,115.9	839.2	659.4	1,067.3	0.00	0.00	
2,490.0	42.12	38.16	2,138.1	855.0	671.9	1,087.4	0.00	0.00	

### Targets

Target Name	Dip Angle (°)	Dip Dir. (°)	TVD (ft)	+N/-S (ft)	+E/-W (ft)	Northing (ft)	Easting (ft)	Latitude	Longitude
- hit/miss target									
- Shape									
O04 696 MF06B-3 BHL	0.00	0.00	8,549.0	2,775.5	2,171.8	1,638,760.82	2,267,013.29	39° 33' 30.16 N	108° 6' 0.26 W
- plan misses target center by 6858.4ft at 2490.0ft MD (2138.1 TVD, 855.0 N, 671.9 E)									
- Rectangle (sides W30.0 H50.0 D0.0)									
Interp @ 4081.2 (NP MF	0.00	0.00	4,081.2	868.8	-348.3	1,636,927.29	2,264,439.47	39° 33' 11.32 N	108° 6' 32.44 W
- plan misses target center by 2194.6ft at 2490.0ft MD (2138.1 TVD, 855.0 N, 671.9 E)									
- Point									
O04 696 MF06B-3 TGT	0.00	0.00	5,589.0	2,785.5	2,188.8	1,638,770.36	2,267,030.56	39° 33' 30.26 N	108° 6' 0.04 W
- plan misses target center by 4235.1ft at 2490.0ft MD (2138.1 TVD, 855.0 N, 671.9 E)									
- Point									

# Planning Report

**Database:** USA EDM 5000 US Multi Users DB  
**Company:** EnCana Oil & Gas (USA) Inc  
**Project:** North Piceance  
**Site:** O04 696 (3rd)  
**Well:** NP MF06B-3 O04 696 (was 15A-4)  
**Wellbore:** DD  
**Design:** Plan #2

**Local Co-ordinate Reference:** Well NP MF06B-3 O04 696 (was 15A-4)  
**TVD Reference:** WELL @ 6044.0ft (Original Well Elev)  
**MD Reference:** WELL @ 6044.0ft (Original Well Elev)  
**North Reference:** True  
**Survey Calculation Method:** Minimum Curvature

## Planned Survey

Measured Depth (ft)	Inclination (°)	Azimuth (°)	Vertical Depth (ft)	+N/-S (ft)	+E/-W (ft)	Vertical Section (ft)	Dogleg Rate (°/100ft)	Build Rate (°/100ft)	Comments / Formations
2,500.0	42.12	38.16	2,145.5	860.3	676.0	1,094.1	0.00	0.00	
2,600.0	42.12	38.16	2,219.7	913.0	717.5	1,161.2	0.00	0.00	
2,700.0	42.12	38.16	2,293.9	965.8	758.9	1,228.3	0.00	0.00	
2,800.0	42.12	38.16	2,368.1	1,018.5	800.3	1,295.3	0.00	0.00	
2,900.0	42.12	38.16	2,442.3	1,071.2	841.8	1,362.4	0.00	0.00	
3,000.0	42.12	38.16	2,516.4	1,124.0	883.2	1,429.5	0.00	0.00	
3,100.0	42.12	38.16	2,590.6	1,176.7	924.6	1,496.5	0.00	0.00	
3,200.0	42.12	38.16	2,664.8	1,229.4	966.1	1,563.6	0.00	0.00	
3,300.0	42.12	38.16	2,739.0	1,282.2	1,007.5	1,630.7	0.00	0.00	
3,400.0	42.12	38.16	2,813.1	1,334.9	1,048.9	1,697.7	0.00	0.00	
3,500.0	42.12	38.16	2,887.3	1,387.6	1,090.4	1,764.8	0.00	0.00	
3,515.8	42.12	38.16	2,899.1	1,396.0	1,096.9	1,775.4	0.00	0.00	Interp @ 4081.2 (NP MF15A-4 O04 696 DD Pla
3,600.0	42.12	38.16	2,961.5	1,440.4	1,131.8	1,831.8	0.00	0.00	
3,700.0	42.12	38.16	3,035.7	1,493.1	1,173.3	1,898.9	0.00	0.00	
3,800.0	42.12	38.16	3,109.8	1,545.8	1,214.7	1,966.0	0.00	0.00	
3,900.0	42.12	38.16	3,184.0	1,598.6	1,256.1	2,033.0	0.00	0.00	
4,000.0	42.12	38.16	3,258.2	1,651.3	1,297.6	2,100.1	0.00	0.00	
4,100.0	42.12	38.16	3,332.4	1,704.0	1,339.0	2,167.2	0.00	0.00	
4,200.0	42.12	38.16	3,406.6	1,756.8	1,380.4	2,234.2	0.00	0.00	
4,300.0	42.12	38.16	3,480.7	1,809.5	1,421.9	2,301.3	0.00	0.00	
4,400.0	42.12	38.16	3,554.9	1,862.2	1,463.3	2,368.4	0.00	0.00	
4,500.0	42.12	38.16	3,629.1	1,915.0	1,504.8	2,435.4	0.00	0.00	
4,600.0	42.12	38.16	3,703.3	1,967.7	1,546.2	2,502.5	0.00	0.00	
4,700.0	42.12	38.16	3,777.4	2,020.4	1,587.6	2,569.6	0.00	0.00	
4,800.0	42.12	38.16	3,851.6	2,073.2	1,629.1	2,636.6	0.00	0.00	
4,900.0	42.12	38.16	3,925.8	2,125.9	1,670.5	2,703.7	0.00	0.00	
5,000.0	42.12	38.16	4,000.0	2,178.6	1,711.9	2,770.8	0.00	0.00	
5,100.0	42.12	38.16	4,074.2	2,231.4	1,753.4	2,837.8	0.00	0.00	
5,200.0	42.12	38.16	4,148.3	2,284.1	1,794.8	2,904.9	0.00	0.00	
5,300.0	42.12	38.16	4,222.5	2,336.8	1,836.2	2,972.0	0.00	0.00	
5,400.0	42.12	38.16	4,296.7	2,389.6	1,877.7	3,039.0	0.00	0.00	
5,415.5	42.12	38.16	4,308.1	2,397.7	1,884.1	3,049.4	0.00	0.00	Start Drop -3.00
5,500.0	39.58	38.16	4,372.1	2,441.2	1,918.2	3,104.7	3.00	-3.00	
5,600.0	36.58	38.16	4,450.8	2,489.7	1,956.4	3,166.3	3.00	-3.00	
5,700.0	33.58	38.16	4,532.6	2,534.9	1,991.9	3,223.8	3.00	-3.00	
5,800.0	30.58	38.16	4,617.3	2,576.6	2,024.7	3,276.9	3.00	-3.00	
5,900.0	27.58	38.16	4,704.7	2,614.8	2,054.7	3,325.5	3.00	-3.00	
6,000.0	24.58	38.16	4,794.5	2,649.4	2,081.9	3,369.5	3.00	-3.00	
6,100.0	21.58	38.16	4,886.5	2,680.2	2,106.1	3,408.7	3.00	-3.00	
6,200.0	18.58	38.16	4,980.4	2,707.2	2,127.3	3,443.0	3.00	-3.00	
6,271.9	16.42	38.16	5,049.0	2,724.2	2,140.7	3,464.6	3.00	-3.00	Williams Fork
6,300.0	15.58	38.16	5,076.0	2,730.3	2,145.4	3,472.4	3.00	-3.00	
6,313.5	15.18	38.16	5,089.0	2,733.1	2,147.6	3,475.9	3.00	-3.00	Top of Gas; Inc=15°
6,400.0	12.58	38.16	5,173.0	2,749.4	2,160.5	3,496.7	3.00	-3.00	
6,500.0	9.58	38.16	5,271.1	2,764.6	2,172.3	3,515.9	3.00	-3.00	
6,600.0	6.58	38.16	5,370.1	2,775.6	2,181.0	3,530.0	3.00	-3.00	
6,700.0	3.58	38.16	5,469.7	2,782.6	2,186.5	3,538.8	3.00	-3.00	
6,800.0	0.58	38.16	5,569.6	2,785.4	2,188.7	3,542.5	3.00	-3.00	
6,819.4	0.00	0.00	5,589.0	2,785.5	2,188.8	3,542.6	3.00	-3.00	EOD; Inc=0° - O04 696 MF06B-3 TGT (6.13.11)
6,900.0	0.20	239.45	5,669.6	2,785.4	2,188.7	3,542.4	0.25	0.25	
6,976.3	0.39	239.45	5,746.0	2,785.2	2,188.3	3,542.1	0.25	0.25	
7,000.0	0.39	239.45	5,769.6	2,785.1	2,188.2	3,541.9	0.00	0.00	

## Planning Report

<b>Database:</b>	USA EDM 5000 US Multi Users DB	<b>Local Co-ordinate Reference:</b>	Well NP MF06B-3 O04 696 (was 15A-4)
<b>Company:</b>	EnCana Oil & Gas (USA) Inc	<b>TVD Reference:</b>	WELL @ 6044.0ft (Original Well Elev)
<b>Project:</b>	North Piceance	<b>MD Reference:</b>	WELL @ 6044.0ft (Original Well Elev)
<b>Site:</b>	O04 696 (3rd)	<b>North Reference:</b>	True
<b>Well:</b>	NP MF06B-3 O04 696 (was 15A-4)	<b>Survey Calculation Method:</b>	Minimum Curvature
<b>Wellbore:</b>	DD		
<b>Design:</b>	Plan #2		

Planned Survey									
Measured Depth (ft)	Inclination (°)	Azimuth (°)	Vertical Depth (ft)	+N/-S (ft)	+E/-W (ft)	Vertical Section (ft)	Dogleg Rate (°/100ft)	Build Rate (°/100ft)	Comments / Formations
7,100.0	0.39	239.45	5,869.6	2,784.8	2,187.6	3,541.3	0.00	0.00	
7,200.0	0.39	239.45	5,969.6	2,784.4	2,187.0	3,540.6	0.00	0.00	
7,300.0	0.39	239.45	6,069.6	2,784.1	2,186.4	3,540.0	0.00	0.00	
7,400.0	0.39	239.45	6,169.6	2,783.8	2,185.8	3,539.4	0.00	0.00	
7,500.0	0.39	239.45	6,269.6	2,783.4	2,185.2	3,538.7	0.00	0.00	
7,600.0	0.39	239.45	6,369.6	2,783.1	2,184.7	3,538.1	0.00	0.00	
7,700.0	0.39	239.45	6,469.6	2,782.7	2,184.1	3,537.4	0.00	0.00	
7,800.0	0.39	239.45	6,569.6	2,782.4	2,183.5	3,536.8	0.00	0.00	
7,900.0	0.39	239.45	6,669.6	2,782.0	2,182.9	3,536.2	0.00	0.00	
8,000.0	0.39	239.45	6,769.6	2,781.7	2,182.3	3,535.5	0.00	0.00	
8,100.0	0.39	239.45	6,869.6	2,781.3	2,181.7	3,534.9	0.00	0.00	
8,200.0	0.39	239.45	6,969.6	2,781.0	2,181.1	3,534.3	0.00	0.00	
8,300.0	0.39	239.45	7,069.6	2,780.6	2,180.5	3,533.6	0.00	0.00	
8,400.0	0.39	239.45	7,169.6	2,780.3	2,179.9	3,533.0	0.00	0.00	
8,500.0	0.39	239.45	7,269.6	2,779.9	2,179.4	3,532.3	0.00	0.00	
8,600.0	0.39	239.45	7,369.6	2,779.6	2,178.8	3,531.7	0.00	0.00	
8,700.0	0.39	239.45	7,469.6	2,779.2	2,178.2	3,531.1	0.00	0.00	
8,800.0	0.39	239.45	7,569.6	2,778.9	2,177.6	3,530.4	0.00	0.00	
8,900.0	0.39	239.45	7,669.6	2,778.5	2,177.0	3,529.8	0.00	0.00	
9,000.0	0.39	239.45	7,769.6	2,778.2	2,176.4	3,529.2	0.00	0.00	
9,100.0	0.39	239.45	7,869.6	2,777.8	2,175.8	3,528.5	0.00	0.00	
9,200.0	0.39	239.45	7,969.6	2,777.5	2,175.2	3,527.9	0.00	0.00	
9,300.0	0.39	239.45	8,069.6	2,777.1	2,174.6	3,527.3	0.00	0.00	
9,400.0	0.39	239.45	8,169.6	2,776.8	2,174.0	3,526.6	0.00	0.00	
9,500.0	0.39	239.45	8,269.6	2,776.4	2,173.5	3,526.0	0.00	0.00	
9,600.0	0.39	239.45	8,369.6	2,776.1	2,172.9	3,525.3	0.00	0.00	
9,700.0	0.39	239.45	8,469.6	2,775.7	2,172.3	3,524.7	0.00	0.00	
9,779.4	0.39	239.45	8,549.0	2,775.5	2,171.8	3,524.2	0.00	0.00	Rollins - O04 696 MF06B-3 BHL (6.13.11)
9,800.0	0.39	239.45	8,569.6	2,775.4	2,171.7	3,524.1	0.00	0.00	
9,900.0	0.39	239.45	8,669.6	2,775.0	2,171.1	3,523.4	0.00	0.00	
9,929.4	0.39	239.45	8,699.0	2,774.9	2,170.9	3,523.2	0.00	0.00	Drillers TD @ 8699' TVD
10,000.0	0.39	239.45	8,769.6	2,774.7	2,170.5	3,522.8	0.00	0.00	
10,100.0	0.39	239.45	8,869.6	2,774.4	2,169.9	3,522.2	0.00	0.00	
10,200.0	0.39	239.45	8,969.6	2,774.0	2,169.3	3,521.5	0.00	0.00	
10,300.0	0.39	239.45	9,069.5	2,773.7	2,168.7	3,520.9	0.00	0.00	
10,400.0	0.39	239.45	9,169.5	2,773.3	2,168.1	3,520.2	0.00	0.00	
10,500.0	0.39	239.45	9,269.5	2,773.0	2,167.6	3,519.6	0.00	0.00	
10,600.0	0.39	239.45	9,369.5	2,772.6	2,167.0	3,519.0	0.00	0.00	
10,700.0	0.39	239.45	9,469.5	2,772.3	2,166.4	3,518.3	0.00	0.00	
10,800.0	0.39	239.45	9,569.5	2,771.9	2,165.8	3,517.7	0.00	0.00	
10,900.0	0.39	239.45	9,669.5	2,771.6	2,165.2	3,517.1	0.00	0.00	
11,000.0	0.39	239.45	9,769.5	2,771.2	2,164.6	3,516.4	0.00	0.00	
11,100.0	0.39	239.45	9,869.5	2,770.9	2,164.0	3,515.8	0.00	0.00	
11,200.0	0.39	239.45	9,969.5	2,770.5	2,163.4	3,515.1	0.00	0.00	
11,230.5	0.39	239.45	10,000.0	2,770.4	2,163.2	3,514.9	0.00	0.00	Permit TD @ 10000' TVD

## Planning Report

<b>Database:</b>	USA EDM 5000 US Multi Users DB	<b>Local Co-ordinate Reference:</b>	Well NP MF06B-3 O04 696 (was 15A-4)
<b>Company:</b>	EnCana Oil & Gas (USA) Inc	<b>TVD Reference:</b>	WELL @ 6044.0ft (Original Well Elev)
<b>Project:</b>	North Piceance	<b>MD Reference:</b>	WELL @ 6044.0ft (Original Well Elev)
<b>Site:</b>	O04 696 (3rd)	<b>North Reference:</b>	True
<b>Well:</b>	NP MF06B-3 O04 696 (was 15A-4)	<b>Survey Calculation Method:</b>	Minimum Curvature
<b>Wellbore:</b>	DD		
<b>Design:</b>	Plan #2		

Targets									
Target Name									
- hit/miss target	Dip Angle	Dip Dir.	TVD	+N/-S	+E/-W	Northing	Easting	Latitude	Longitude
- Shape	(°)	(°)	(ft)	(ft)	(ft)	(ft)	(ft)		
O04 696 MF06B-3 BHL - plan hits target center - Rectangle (sides W30.0 H50.0 D0.0)	0.00	0.00	8,549.0	2,775.5	2,171.8	1,638,760.82	2,267,013.29	39° 33' 30.16 N	108° 6' 0.26 W
Interp @ 4081.2 (NP MF - plan misses target center by 1940.1ft at 3515.8ft MD (2899.1 TVD, 1396.0 N, 1096.9 E) - Point	0.00	0.00	4,081.2	868.8	-348.3	1,636,927.29	2,264,439.47	39° 33' 11.32 N	108° 6' 32.44 W
O04 696 MF06B-3 TGT - plan hits target center - Point	0.00	0.00	5,589.0	2,785.5	2,188.8	1,638,770.36	2,267,030.56	39° 33' 30.26 N	108° 6' 0.04 W

Formations					
Measured Depth	Vertical Depth	Name	Lithology	Dip	Dip Direction
(ft)	(ft)			(°)	(°)
6,271.9	5,049.0	Williams Fork		0.00	
6,313.5	5,089.0	Top of Gas; Inc=15°		0.00	
9,779.4	8,549.0	Rollins		0.00	

Plan Annotations				
Measured Depth	Vertical Depth	Local Coordinates		Comment
(ft)	(ft)	+N/-S (ft)	+E/-W (ft)	
200.0	200.0	0.0	0.0	KOP @ 200'
1,603.9	1,480.9	387.8	304.7	EOB; Inc=42.12°
5,415.5	4,308.1	2,397.7	1,884.1	Start Drop -3.00
6,819.4	5,589.0	2,785.5	2,188.8	EOD; Inc=0°
9,929.4	8,699.0	2,785.2	2,188.3	Drillers TD @ 8699' TVD
11,230.5	10,000.0	2,775.5	2,171.8	Permit TD @ 10000' TVD