

Well Name: Booth USX EE35-07D

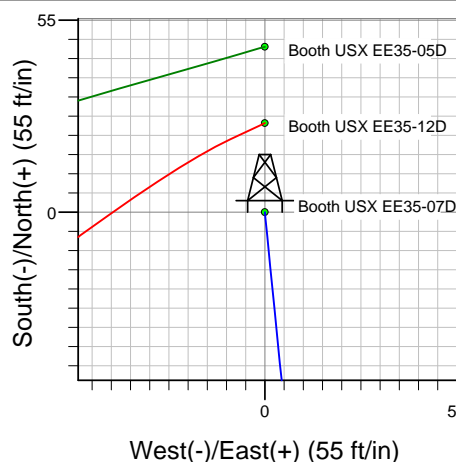
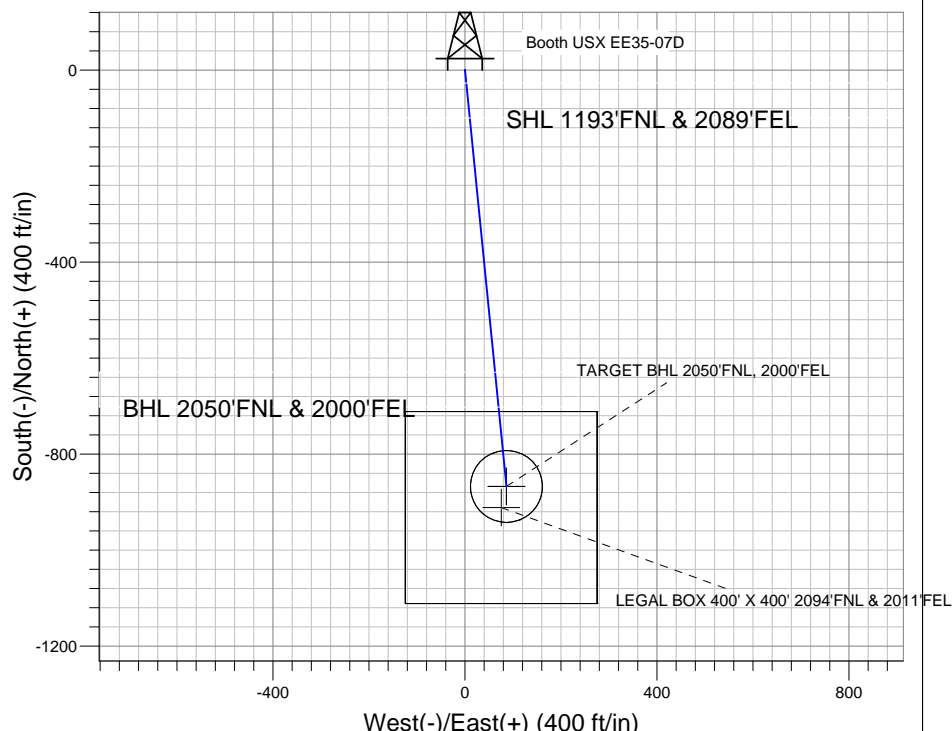
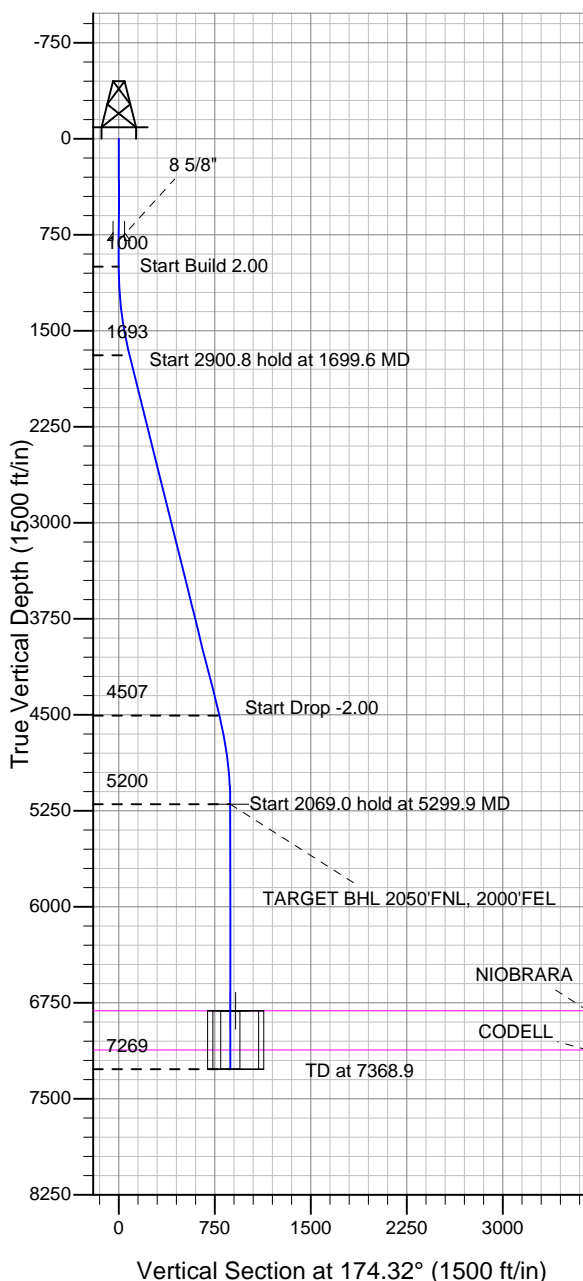
Surface Location: Booth USX EE35-05D Pad Sec.35-T7N-R65W
North American Datum 1983 US State Plane 1983 Colorado Northern Zone

Ground Elevation: 4831.0

+N/-S	+E/-W	Northing	Easting	Latitude	Longitude	Slot
0.0	0.0	1438830.87	3242366.16	40.534720	-104.628030	

Original Well Elev WELL @ 4844.0ft (Original Well Elev)

NOBLE ENERGY INC WELD COUNTY CO



Booth USX EE35-05D Pad Sec.35-T7N-R65W
Booth USX EE35-07D
Noble Booth USX EE35-07D Plan #1 (7-13-11)
13:11, July 19 2011



Azimuths to True North
Magnetic North: 8.79°

Magnetic Field
Strength: 53208.5nT
Dip Angle: 67.18°
Date: 7/13/2011
Model: IGRF2010

WELLBORE TARGET DETAILS (LAT/LONG)

Name	TVD	+N/-S	+E/-W	Latitude	Longitude	Shape
TARGET BHL 2050'FNL, 2000'FEL	5200.0	-867.1	86.2	40.532340	-104.627720	Point
LEGAL BOX 400' X 400' 2094'FNL & 2011'FEL	6814.0	-911.1	75.2	40.532219	-104.627759	Rectangle (Sides: L400.0 W400.0)
TARGET CIRCLE 2050'FNL & 2000'FEL	6814.0	-867.1	86.2	40.532340	-104.627720	Circle (Radius: 75.0)

SECTION DETAILS

Sec	MD	Inc	Azi	TVD	+N/-S	+E/-W	DLeg	TFace	VSec	Target
1	0.0	0.00	0.00	0.0	0.0	0.0	0.00	0.00	0.0	
2	1000.0	0.00	0.00	1000.0	0.0	0.0	0.00	0.00	0.0	
3	1699.6	13.99	174.32	1692.7	-84.6	8.4	2.00	174.32	85.0	
4	4600.3	13.99	174.32	4507.3	-782.5	77.8	0.00	0.00	786.3	
5	5299.9	0.00	0.00	5200.0	-867.1	86.2	2.00	180.00	871.3	TARGET BHL 2050'FNL, 2000'FEL
6	7368.9	0.00	0.00	7269.0	-867.1	86.2	0.00	0.00	871.3	



Directional

NOBLE ENERGY INC WELD COUNTY CO

SEC.35-T7N-R65W

Booth USX EE35-05D Pad Sec.35-T7N-R65W

Booth USX EE35-07D

Wellbore #1

Plan: Noble Booth USX EE35-07D Plan #1 (7-13-11)

Standard Planning Report

19 July, 2011



Database:	Landmark	Local Co-ordinate Reference:	Well Booth USX EE35-07D
Company:	NOBLE ENERGY INC WELD COUNTY CO	TVD Reference:	WELL @ 4844.0ft (Original Well Elev)
Project:	SEC.35-T7N-R65W	MD Reference:	WELL @ 4844.0ft (Original Well Elev)
Site:	Booth USX EE35-05D Pad Sec.35-T7N-R65W	North Reference:	True
Well:	Booth USX EE35-07D	Survey Calculation Method:	Minimum Curvature
Wellbore:	Wellbore #1		
Design:	Noble Booth USX EE35-07D Plan #1 (7-13-11)		

Project	SEC.35-T7N-R65W, Weld County, Colorado		
Map System:	US State Plane 1983	System Datum:	Mean Sea Level
Geo Datum:	North American Datum 1983		Using Well Reference Point
Map Zone:	Colorado Northern Zone		Using geodetic scale factor

Site Booth USX EE35-05D Pad Sec.35-T7N-R65W					
Site Position:		Northing:		1,438,878.24 ft	
From:	Lat/Long	Easting:		Latitude:	40.534850
		3,242,365.69 ft		Longitude:	-104.628030
Position Uncertainty:		Slot Radius:		Grid Convergence:	0.56 °
0.0 ft		"			

Well	Booth USX EE35-07D					
Well Position	+N/-S	-47.4 ft	Northing:	1,438,830.87 ft	Latitude:	40.534720
	+E/-W	0.0 ft	Easting:	3,242,366.16 ft	Longitude:	-104.628030
Position Uncertainty		0.0 ft	Wellhead Elevation:	ft	Ground Level:	4,831.0 ft

Wellbore	Wellbore #1				
Magnetics	Model Name	Sample Date	Declination (°)	Dip Angle (°)	Field Strength (nT)
	IGRF2010	7/13/2011	8.79	67.18	53,209

Design	Noble Booth USX EE35-07D Plan #1 (7-13-11)			
Audit Notes:				
Version:	Phase:	PROTOTYPE	Tie On Depth:	0.0
Vertical Section:	Depth From (TVD) (ft)	+N/-S (ft)	+E/-W (ft)	Direction (°)
	0.0	0.0	0.0	174.32

Plan Sections										
Measured Depth (ft)	Inclination (°)	Azimuth (°)	Vertical Depth (ft)	+N/-S (ft)	+E/-W (ft)	Dogleg Rate (°/100ft)	Build Rate (°/100ft)	Turn Rate (°/100ft)	TFO (°)	Target
0.0	0.00	0.00	0.0	0.0	0.0	0.00	0.00	0.00	0.00	
1,000.0	0.00	0.00	1,000.0	0.0	0.0	0.00	0.00	0.00	0.00	
1,699.6	13.99	174.32	1,692.7	-84.6	8.4	2.00	2.00	0.00	174.32	
4,600.3	13.99	174.32	4,507.3	-782.5	77.8	0.00	0.00	0.00	0.00	
5,299.9	0.00	0.00	5,200.0	-867.1	86.2	2.00	-2.00	0.00	180.00	TARGET BHL 205C
7,368.9	0.00	0.00	7,269.0	-867.1	86.2	0.00	0.00	0.00	0.00	

Database:	Landmark	Local Co-ordinate Reference:	Well Booth USX EE35-07D
Company:	NOBLE ENERGY INC WELD COUNTY CO	TVD Reference:	WELL @ 4844.0ft (Original Well Elev)
Project:	SEC.35-T7N-R65W	MD Reference:	WELL @ 4844.0ft (Original Well Elev)
Site:	Booth USX EE35-05D Pad Sec.35-T7N-R65W	North Reference:	True
Well:	Booth USX EE35-07D	Survey Calculation Method:	Minimum Curvature
Wellbore:	Wellbore #1		
Design:	Noble Booth USX EE35-07D Plan #1 (7-13-11)		

Planned Survey

Measured Depth (ft)	Inclination (°)	Azimuth (°)	Vertical Depth (ft)	+N/-S (ft)	+E/-W (ft)	Vertical Section (ft)	Dogleg Rate (°/100ft)	Build Rate (°/100ft)	Turn Rate (°/100ft)
0.0	0.00	0.00	0.0	0.0	0.0	0.0	0.00	0.00	0.00
40.0	0.00	0.00	40.0	0.0	0.0	0.0	0.00	0.00	0.00
80.0	0.00	0.00	80.0	0.0	0.0	0.0	0.00	0.00	0.00
120.0	0.00	0.00	120.0	0.0	0.0	0.0	0.00	0.00	0.00
160.0	0.00	0.00	160.0	0.0	0.0	0.0	0.00	0.00	0.00
200.0	0.00	0.00	200.0	0.0	0.0	0.0	0.00	0.00	0.00
240.0	0.00	0.00	240.0	0.0	0.0	0.0	0.00	0.00	0.00
280.0	0.00	0.00	280.0	0.0	0.0	0.0	0.00	0.00	0.00
320.0	0.00	0.00	320.0	0.0	0.0	0.0	0.00	0.00	0.00
360.0	0.00	0.00	360.0	0.0	0.0	0.0	0.00	0.00	0.00
400.0	0.00	0.00	400.0	0.0	0.0	0.0	0.00	0.00	0.00
440.0	0.00	0.00	440.0	0.0	0.0	0.0	0.00	0.00	0.00
480.0	0.00	0.00	480.0	0.0	0.0	0.0	0.00	0.00	0.00
520.0	0.00	0.00	520.0	0.0	0.0	0.0	0.00	0.00	0.00
560.0	0.00	0.00	560.0	0.0	0.0	0.0	0.00	0.00	0.00
600.0	0.00	0.00	600.0	0.0	0.0	0.0	0.00	0.00	0.00
640.0	0.00	0.00	640.0	0.0	0.0	0.0	0.00	0.00	0.00
680.0	0.00	0.00	680.0	0.0	0.0	0.0	0.00	0.00	0.00
720.0	0.00	0.00	720.0	0.0	0.0	0.0	0.00	0.00	0.00
760.0	0.00	0.00	760.0	0.0	0.0	0.0	0.00	0.00	0.00
795.0	0.00	0.00	795.0	0.0	0.0	0.0	0.00	0.00	0.00
8 5/8"									
800.0	0.00	0.00	800.0	0.0	0.0	0.0	0.00	0.00	0.00
840.0	0.00	0.00	840.0	0.0	0.0	0.0	0.00	0.00	0.00
880.0	0.00	0.00	880.0	0.0	0.0	0.0	0.00	0.00	0.00
920.0	0.00	0.00	920.0	0.0	0.0	0.0	0.00	0.00	0.00
960.0	0.00	0.00	960.0	0.0	0.0	0.0	0.00	0.00	0.00
1,000.0	0.00	0.00	1,000.0	0.0	0.0	0.0	0.00	0.00	0.00
1,040.0	0.80	174.32	1,040.0	-0.3	0.0	0.3	2.00	2.00	0.00
1,080.0	1.60	174.32	1,080.0	-1.1	0.1	1.1	2.00	2.00	0.00
1,120.0	2.40	174.32	1,120.0	-2.5	0.2	2.5	2.00	2.00	0.00
1,160.0	3.20	174.32	1,159.9	-4.4	0.4	4.5	2.00	2.00	0.00
1,200.0	4.00	174.32	1,199.8	-6.9	0.7	7.0	2.00	2.00	0.00
1,240.0	4.80	174.32	1,239.7	-10.0	1.0	10.0	2.00	2.00	0.00
1,280.0	5.60	174.32	1,279.6	-13.6	1.4	13.7	2.00	2.00	0.00
1,320.0	6.40	174.32	1,319.3	-17.8	1.8	17.9	2.00	2.00	0.00
1,360.0	7.20	174.32	1,359.1	-22.5	2.2	22.6	2.00	2.00	0.00
1,400.0	8.00	174.32	1,398.7	-27.7	2.8	27.9	2.00	2.00	0.00
1,440.0	8.80	174.32	1,438.3	-33.6	3.3	33.7	2.00	2.00	0.00
1,480.0	9.60	174.32	1,477.8	-39.9	4.0	40.1	2.00	2.00	0.00
1,520.0	10.40	174.32	1,517.1	-46.8	4.7	47.1	2.00	2.00	0.00
1,560.0	11.20	174.32	1,556.4	-54.3	5.4	54.6	2.00	2.00	0.00
1,600.0	12.00	174.32	1,595.6	-62.3	6.2	62.6	2.00	2.00	0.00
1,640.0	12.80	174.32	1,634.7	-70.8	7.0	71.2	2.00	2.00	0.00
1,680.0	13.60	174.32	1,673.6	-79.9	7.9	80.3	2.00	2.00	0.00
1,699.6	13.99	174.32	1,692.7	-84.6	8.4	85.0	2.00	2.00	0.00
1,720.0	13.99	174.32	1,712.5	-89.5	8.9	89.9	0.00	0.00	0.00
1,760.0	13.99	174.32	1,751.3	-99.1	9.9	99.6	0.00	0.00	0.00
1,800.0	13.99	174.32	1,790.1	-108.7	10.8	109.3	0.00	0.00	0.00
1,840.0	13.99	174.32	1,828.9	-118.4	11.8	118.9	0.00	0.00	0.00
1,880.0	13.99	174.32	1,867.7	-128.0	12.7	128.6	0.00	0.00	0.00
1,920.0	13.99	174.32	1,906.5	-137.6	13.7	138.3	0.00	0.00	0.00
1,960.0	13.99	174.32	1,945.3	-147.2	14.6	148.0	0.00	0.00	0.00

Database:	Landmark	Local Co-ordinate Reference:	Well Booth USX EE35-07D
Company:	NOBLE ENERGY INC WELD COUNTY CO	TVD Reference:	WELL @ 4844.0ft (Original Well Elev)
Project:	SEC.35-T7N-R65W	MD Reference:	WELL @ 4844.0ft (Original Well Elev)
Site:	Booth USX EE35-05D Pad Sec.35-T7N-R65W	North Reference:	True
Well:	Booth USX EE35-07D	Survey Calculation Method:	Minimum Curvature
Wellbore:	Wellbore #1		
Design:	Noble Booth USX EE35-07D Plan #1 (7-13-11)		

Planned Survey

Measured Depth (ft)	Inclination (°)	Azimuth (°)	Vertical Depth (ft)	+N/-S (ft)	+E/-W (ft)	Vertical Section (ft)	Dogleg Rate (°/100ft)	Build Rate (°/100ft)	Turn Rate (°/100ft)
2,000.0	13.99	174.32	1,984.2	-156.9	15.6	157.6	0.00	0.00	0.00
2,040.0	13.99	174.32	2,023.0	-166.5	16.5	167.3	0.00	0.00	0.00
2,080.0	13.99	174.32	2,061.8	-176.1	17.5	177.0	0.00	0.00	0.00
2,120.0	13.99	174.32	2,100.6	-185.7	18.5	186.6	0.00	0.00	0.00
2,160.0	13.99	174.32	2,139.4	-195.4	19.4	196.3	0.00	0.00	0.00
2,200.0	13.99	174.32	2,178.2	-205.0	20.4	206.0	0.00	0.00	0.00
2,240.0	13.99	174.32	2,217.0	-214.6	21.3	215.7	0.00	0.00	0.00
2,280.0	13.99	174.32	2,255.8	-224.2	22.3	225.3	0.00	0.00	0.00
2,320.0	13.99	174.32	2,294.7	-233.8	23.2	235.0	0.00	0.00	0.00
2,360.0	13.99	174.32	2,333.5	-243.5	24.2	244.7	0.00	0.00	0.00
2,400.0	13.99	174.32	2,372.3	-253.1	25.2	254.3	0.00	0.00	0.00
2,440.0	13.99	174.32	2,411.1	-262.7	26.1	264.0	0.00	0.00	0.00
2,480.0	13.99	174.32	2,449.9	-272.3	27.1	273.7	0.00	0.00	0.00
2,520.0	13.99	174.32	2,488.7	-282.0	28.0	283.4	0.00	0.00	0.00
2,560.0	13.99	174.32	2,527.5	-291.6	29.0	293.0	0.00	0.00	0.00
2,600.0	13.99	174.32	2,566.4	-301.2	29.9	302.7	0.00	0.00	0.00
2,640.0	13.99	174.32	2,605.2	-310.8	30.9	312.4	0.00	0.00	0.00
2,680.0	13.99	174.32	2,644.0	-320.5	31.8	322.0	0.00	0.00	0.00
2,720.0	13.99	174.32	2,682.8	-330.1	32.8	331.7	0.00	0.00	0.00
2,760.0	13.99	174.32	2,721.6	-339.7	33.8	341.4	0.00	0.00	0.00
2,800.0	13.99	174.32	2,760.4	-349.3	34.7	351.1	0.00	0.00	0.00
2,840.0	13.99	174.32	2,799.2	-359.0	35.7	360.7	0.00	0.00	0.00
2,880.0	13.99	174.32	2,838.0	-368.6	36.6	370.4	0.00	0.00	0.00
2,920.0	13.99	174.32	2,876.9	-378.2	37.6	380.1	0.00	0.00	0.00
2,960.0	13.99	174.32	2,915.7	-387.8	38.5	389.7	0.00	0.00	0.00
3,000.0	13.99	174.32	2,954.5	-397.5	39.5	399.4	0.00	0.00	0.00
3,040.0	13.99	174.32	2,993.3	-407.1	40.5	409.1	0.00	0.00	0.00
3,080.0	13.99	174.32	3,032.1	-416.7	41.4	418.8	0.00	0.00	0.00
3,120.0	13.99	174.32	3,070.9	-426.3	42.4	428.4	0.00	0.00	0.00
3,160.0	13.99	174.32	3,109.7	-435.9	43.3	438.1	0.00	0.00	0.00
3,200.0	13.99	174.32	3,148.6	-445.6	44.3	447.8	0.00	0.00	0.00
3,240.0	13.99	174.32	3,187.4	-455.2	45.2	457.4	0.00	0.00	0.00
3,280.0	13.99	174.32	3,226.2	-464.8	46.2	467.1	0.00	0.00	0.00
3,320.0	13.99	174.32	3,265.0	-474.4	47.2	476.8	0.00	0.00	0.00
3,360.0	13.99	174.32	3,303.8	-484.1	48.1	486.5	0.00	0.00	0.00
3,400.0	13.99	174.32	3,342.6	-493.7	49.1	496.1	0.00	0.00	0.00
3,440.0	13.99	174.32	3,381.4	-503.3	50.0	505.8	0.00	0.00	0.00
3,480.0	13.99	174.32	3,420.2	-512.9	51.0	515.5	0.00	0.00	0.00
3,520.0	13.99	174.32	3,459.1	-522.6	51.9	525.1	0.00	0.00	0.00
3,560.0	13.99	174.32	3,497.9	-532.2	52.9	534.8	0.00	0.00	0.00
3,600.0	13.99	174.32	3,536.7	-541.8	53.8	544.5	0.00	0.00	0.00
3,640.0	13.99	174.32	3,575.5	-551.4	54.8	554.2	0.00	0.00	0.00
3,680.0	13.99	174.32	3,614.3	-561.1	55.8	563.8	0.00	0.00	0.00
3,720.0	13.99	174.32	3,653.1	-570.7	56.7	573.5	0.00	0.00	0.00
3,760.0	13.99	174.32	3,691.9	-580.3	57.7	583.2	0.00	0.00	0.00
3,800.0	13.99	174.32	3,730.7	-589.9	58.6	592.8	0.00	0.00	0.00
3,840.0	13.99	174.32	3,769.6	-599.6	59.6	602.5	0.00	0.00	0.00
3,880.0	13.99	174.32	3,808.4	-609.2	60.5	612.2	0.00	0.00	0.00
3,920.0	13.99	174.32	3,847.2	-618.8	61.5	621.9	0.00	0.00	0.00
3,960.0	13.99	174.32	3,886.0	-628.4	62.5	631.5	0.00	0.00	0.00
4,000.0	13.99	174.32	3,924.8	-638.1	63.4	641.2	0.00	0.00	0.00
4,040.0	13.99	174.32	3,963.6	-647.7	64.4	650.9	0.00	0.00	0.00
4,080.0	13.99	174.32	4,002.4	-657.3	65.3	660.5	0.00	0.00	0.00

Database:	Landmark	Local Co-ordinate Reference:	Well Booth USX EE35-07D
Company:	NOBLE ENERGY INC WELD COUNTY CO	TVD Reference:	WELL @ 4844.0ft (Original Well Elev)
Project:	SEC.35-T7N-R65W	MD Reference:	WELL @ 4844.0ft (Original Well Elev)
Site:	Booth USX EE35-05D Pad Sec.35-T7N-R65W	North Reference:	True
Well:	Booth USX EE35-07D	Survey Calculation Method:	Minimum Curvature
Wellbore:	Wellbore #1		
Design:	Noble Booth USX EE35-07D Plan #1 (7-13-11)		

Planned Survey									
Measured Depth (ft)	Inclination (°)	Azimuth (°)	Vertical Depth (ft)	+N/-S (ft)	+E/-W (ft)	Vertical Section (ft)	Dogleg Rate (°/100ft)	Build Rate (°/100ft)	Turn Rate (°/100ft)
4,120.0	13.99	174.32	4,041.3	-666.9	66.3	670.2	0.00	0.00	0.00
4,160.0	13.99	174.32	4,080.1	-676.5	67.2	679.9	0.00	0.00	0.00
4,200.0	13.99	174.32	4,118.9	-686.2	68.2	689.6	0.00	0.00	0.00
4,240.0	13.99	174.32	4,157.7	-695.8	69.2	699.2	0.00	0.00	0.00
4,280.0	13.99	174.32	4,196.5	-705.4	70.1	708.9	0.00	0.00	0.00
4,320.0	13.99	174.32	4,235.3	-715.0	71.1	718.6	0.00	0.00	0.00
4,360.0	13.99	174.32	4,274.1	-724.7	72.0	728.2	0.00	0.00	0.00
4,400.0	13.99	174.32	4,312.9	-734.3	73.0	737.9	0.00	0.00	0.00
4,440.0	13.99	174.32	4,351.8	-743.9	73.9	747.6	0.00	0.00	0.00
4,480.0	13.99	174.32	4,390.6	-753.5	74.9	757.2	0.00	0.00	0.00
4,520.0	13.99	174.32	4,429.4	-763.2	75.8	766.9	0.00	0.00	0.00
4,560.0	13.99	174.32	4,468.2	-772.8	76.8	776.6	0.00	0.00	0.00
4,600.0	13.99	174.32	4,507.0	-782.4	77.8	786.3	0.00	0.00	0.00
4,600.3	13.99	174.32	4,507.3	-782.5	77.8	786.3	0.00	0.00	0.00
4,640.0	13.20	174.32	4,545.9	-791.8	78.7	795.7	2.00	-2.00	0.00
4,680.0	12.40	174.32	4,584.9	-800.6	79.6	804.5	2.00	-2.00	0.00
4,720.0	11.60	174.32	4,624.0	-808.9	80.4	812.8	2.00	-2.00	0.00
4,760.0	10.80	174.32	4,663.3	-816.6	81.2	820.6	2.00	-2.00	0.00
4,800.0	10.00	174.32	4,702.6	-823.8	81.9	827.8	2.00	-2.00	0.00
4,840.0	9.20	174.32	4,742.0	-830.4	82.5	834.5	2.00	-2.00	0.00
4,880.0	8.40	174.32	4,781.6	-836.5	83.1	840.6	2.00	-2.00	0.00
4,920.0	7.60	174.32	4,821.2	-842.0	83.7	846.2	2.00	-2.00	0.00
4,960.0	6.80	174.32	4,860.9	-847.0	84.2	851.2	2.00	-2.00	0.00
5,000.0	6.00	174.32	4,900.6	-851.5	84.6	855.7	2.00	-2.00	0.00
5,040.0	5.20	174.32	4,940.4	-855.3	85.0	859.6	2.00	-2.00	0.00
5,080.0	4.40	174.32	4,980.3	-858.7	85.3	862.9	2.00	-2.00	0.00
5,120.0	3.60	174.32	5,020.2	-861.4	85.6	865.7	2.00	-2.00	0.00
5,160.0	2.80	174.32	5,060.1	-863.7	85.8	867.9	2.00	-2.00	0.00
5,200.0	2.00	174.32	5,100.1	-865.3	86.0	869.6	2.00	-2.00	0.00
5,240.0	1.20	174.32	5,140.1	-866.4	86.1	870.7	2.00	-2.00	0.00
5,280.0	0.40	174.32	5,180.1	-867.0	86.2	871.3	2.00	-2.00	0.00
5,299.9	0.00	0.00	5,200.0	-867.1	86.2	871.3	2.00	-2.00	0.00
TARGET BHL 2050'FNL, 2000'FEL									
5,320.0	0.00	0.00	5,220.1	-867.1	86.2	871.3	0.00	0.00	0.00
5,360.0	0.00	0.00	5,260.1	-867.1	86.2	871.3	0.00	0.00	0.00
5,400.0	0.00	0.00	5,300.1	-867.1	86.2	871.3	0.00	0.00	0.00
5,440.0	0.00	0.00	5,340.1	-867.1	86.2	871.3	0.00	0.00	0.00
5,480.0	0.00	0.00	5,380.1	-867.1	86.2	871.3	0.00	0.00	0.00
5,520.0	0.00	0.00	5,420.1	-867.1	86.2	871.3	0.00	0.00	0.00
5,560.0	0.00	0.00	5,460.1	-867.1	86.2	871.3	0.00	0.00	0.00
5,600.0	0.00	0.00	5,500.1	-867.1	86.2	871.3	0.00	0.00	0.00
5,640.0	0.00	0.00	5,540.1	-867.1	86.2	871.3	0.00	0.00	0.00
5,680.0	0.00	0.00	5,580.1	-867.1	86.2	871.3	0.00	0.00	0.00
5,720.0	0.00	0.00	5,620.1	-867.1	86.2	871.3	0.00	0.00	0.00
5,760.0	0.00	0.00	5,660.1	-867.1	86.2	871.3	0.00	0.00	0.00
5,800.0	0.00	0.00	5,700.1	-867.1	86.2	871.3	0.00	0.00	0.00
5,840.0	0.00	0.00	5,740.1	-867.1	86.2	871.3	0.00	0.00	0.00
5,880.0	0.00	0.00	5,780.1	-867.1	86.2	871.3	0.00	0.00	0.00
5,920.0	0.00	0.00	5,820.1	-867.1	86.2	871.3	0.00	0.00	0.00
5,960.0	0.00	0.00	5,860.1	-867.1	86.2	871.3	0.00	0.00	0.00
6,000.0	0.00	0.00	5,900.1	-867.1	86.2	871.3	0.00	0.00	0.00
6,040.0	0.00	0.00	5,940.1	-867.1	86.2	871.3	0.00	0.00	0.00
6,080.0	0.00	0.00	5,980.1	-867.1	86.2	871.3	0.00	0.00	0.00

Database:	Landmark	Local Co-ordinate Reference:	Well Booth USX EE35-07D
Company:	NOBLE ENERGY INC WELD COUNTY CO	TVD Reference:	WELL @ 4844.0ft (Original Well Elev)
Project:	SEC.35-T7N-R65W	MD Reference:	WELL @ 4844.0ft (Original Well Elev)
Site:	Booth USX EE35-05D Pad Sec.35-T7N-R65W	North Reference:	True
Well:	Booth USX EE35-07D	Survey Calculation Method:	Minimum Curvature
Wellbore:	Wellbore #1		
Design:	Noble Booth USX EE35-07D Plan #1 (7-13-11)		

Planned Survey

Measured Depth (ft)	Inclination (°)	Azimuth (°)	Vertical Depth (ft)	+N/-S (ft)	+E/-W (ft)	Vertical Section (ft)	Dogleg Rate (°/100ft)	Build Rate (°/100ft)	Turn Rate (°/100ft)
6,120.0	0.00	0.00	6,020.1	-867.1	86.2	871.3	0.00	0.00	0.00
6,160.0	0.00	0.00	6,060.1	-867.1	86.2	871.3	0.00	0.00	0.00
6,200.0	0.00	0.00	6,100.1	-867.1	86.2	871.3	0.00	0.00	0.00
6,240.0	0.00	0.00	6,140.1	-867.1	86.2	871.3	0.00	0.00	0.00
6,280.0	0.00	0.00	6,180.1	-867.1	86.2	871.3	0.00	0.00	0.00
6,320.0	0.00	0.00	6,220.1	-867.1	86.2	871.3	0.00	0.00	0.00
6,360.0	0.00	0.00	6,260.1	-867.1	86.2	871.3	0.00	0.00	0.00
6,400.0	0.00	0.00	6,300.1	-867.1	86.2	871.3	0.00	0.00	0.00
6,440.0	0.00	0.00	6,340.1	-867.1	86.2	871.3	0.00	0.00	0.00
6,480.0	0.00	0.00	6,380.1	-867.1	86.2	871.3	0.00	0.00	0.00
6,520.0	0.00	0.00	6,420.1	-867.1	86.2	871.3	0.00	0.00	0.00
6,560.0	0.00	0.00	6,460.1	-867.1	86.2	871.3	0.00	0.00	0.00
6,600.0	0.00	0.00	6,500.1	-867.1	86.2	871.3	0.00	0.00	0.00
6,640.0	0.00	0.00	6,540.1	-867.1	86.2	871.3	0.00	0.00	0.00
6,680.0	0.00	0.00	6,580.1	-867.1	86.2	871.3	0.00	0.00	0.00
6,720.0	0.00	0.00	6,620.1	-867.1	86.2	871.3	0.00	0.00	0.00
6,760.0	0.00	0.00	6,660.1	-867.1	86.2	871.3	0.00	0.00	0.00
6,800.0	0.00	0.00	6,700.1	-867.1	86.2	871.3	0.00	0.00	0.00
6,840.0	0.00	0.00	6,740.1	-867.1	86.2	871.3	0.00	0.00	0.00
6,880.0	0.00	0.00	6,780.1	-867.1	86.2	871.3	0.00	0.00	0.00
6,913.9	0.00	0.00	6,814.0	-867.1	86.2	871.3	0.00	0.00	0.00
NIOBRARA - LEGAL BOX 400' X 400' 2094'FNL & 2011'FEL - TARGET CIRCLE 2050'FNL & 2000'FEL									
6,920.0	0.00	0.00	6,820.1	-867.1	86.2	871.3	0.00	0.00	0.00
6,960.0	0.00	0.00	6,860.1	-867.1	86.2	871.3	0.00	0.00	0.00
7,000.0	0.00	0.00	6,900.1	-867.1	86.2	871.3	0.00	0.00	0.00
7,040.0	0.00	0.00	6,940.1	-867.1	86.2	871.3	0.00	0.00	0.00
7,080.0	0.00	0.00	6,980.1	-867.1	86.2	871.3	0.00	0.00	0.00
7,120.0	0.00	0.00	7,020.1	-867.1	86.2	871.3	0.00	0.00	0.00
7,160.0	0.00	0.00	7,060.1	-867.1	86.2	871.3	0.00	0.00	0.00
7,200.0	0.00	0.00	7,100.1	-867.1	86.2	871.3	0.00	0.00	0.00
7,218.9	0.00	0.00	7,119.0	-867.1	86.2	871.3	0.00	0.00	0.00
CODELL									
7,240.0	0.00	0.00	7,140.1	-867.1	86.2	871.3	0.00	0.00	0.00
7,280.0	0.00	0.00	7,180.1	-867.1	86.2	871.3	0.00	0.00	0.00
7,320.0	0.00	0.00	7,220.1	-867.1	86.2	871.3	0.00	0.00	0.00
7,360.0	0.00	0.00	7,260.1	-867.1	86.2	871.3	0.00	0.00	0.00
7,368.9	0.00	0.00	7,269.0	-867.1	86.2	871.3	0.00	0.00	0.00

Database:	Landmark	Local Co-ordinate Reference:	Well Booth USX EE35-07D
Company:	NOBLE ENERGY INC WELD COUNTY CO	TVD Reference:	WELL @ 4844.0ft (Original Well Elev)
Project:	SEC.35-T7N-R65W	MD Reference:	WELL @ 4844.0ft (Original Well Elev)
Site:	Booth USX EE35-05D Pad Sec.35-T7N-R65W	North Reference:	True
Well:	Booth USX EE35-07D	Survey Calculation Method:	Minimum Curvature
Wellbore:	Wellbore #1		
Design:	Noble Booth USX EE35-07D Plan #1 (7-13-11)		

Targets

Target Name

- hit/miss target	Dip Angle	Dip Dir.	TVD	+N/-S	+E/-W	Northing	Easting	Latitude	Longitude
- Shape	(°)	(°)	(ft)	(ft)	(ft)	(ft)	(ft)		
LEGAL BOX 400' X 400'	0.00	0.00	6,814.0	-911.1	75.2	1,437,920.59	3,242,450.31	40.532219	-104.627759
- plan misses target center by 45.4ft at 6913.9ft MD (6814.0 TVD, -867.1 N, 86.2 E)									
- Rectangle (sides W400.0 H400.0 D455.0)									
TARGET BHL 2050'F	0.00	0.00	5,200.0	-867.1	86.2	1,437,964.72	3,242,460.85	40.532340	-104.627720
- plan hits target center									
- Point									
TARGET CIRCLE 205'	0.00	0.00	6,814.0	-867.1	86.2	1,437,964.72	3,242,460.85	40.532340	-104.627720
- plan hits target center									
- Circle (radius 75.0)									

Casing Points

Measured Depth	Vertical Depth	Name	Casing Diameter	Hole Diameter
(ft)	(ft)		(")	(")
795.0	795.0	8 5/8"	8-5/8	12-1/4

Formations

Measured Depth	Vertical Depth	Name	Lithology	Dip	Dip Direction
(ft)	(ft)			(°)	(°)
6,913.9	6,814.0	NIOBRARA		0.00	
7,218.9	7,119.0	CODELL		0.00	