

Company	Pioneer Natural Resources	Company	Pioneer Natural Resources
Well	Grants 14-34 Tr	Well	Grants 14-34 Tr
Field	Purgatoire River	Field	Purgatoire River
County	Las Animas	County	Las Animas
State	Colorado	State	Colorado
Location:	API #: 05 071 09783 00 571' FSL & 636' FWL	Other Services	CDNL
Permanent Datum	SEC 34 TWP 32S RGE 66W	Elevation	
Log Measured From	Ground Level	K.B. 7489'	
Drilling Measured From	Kelly Bushing 4' AGL Kelly Bushing	D.F. -----	
		G.L. 7485'	
Date	5-15-11		
Run Number	One		
Depth Driller	1902'		
Depth Logger	1889'		
Bottom Logged Interval	1887'		
Top Log Interval	Surface Casing		
Casing Driller	8 5/8" @ 671'		
Casing Logger	667'		
Bit Size	7 7/8"		
Type Fluid in Hole	Airated Water		
Density / Viscosity	///		
pH / Fluid Loss	///		
Source of Sample	///		
Rm @ Meas. Temp	///		
Rmf @ Meas. Temp	///		
Rmc @ Meas. Temp	///		
Source of Rmf / Rmc	///		
Rm @ BHT	///		
Time Circulation Stopped	11:00 P.M.		
Time Logger on Bottom	1:45 A.M.		
Maximum Recorded Temperature	98 DEG F		
Equipment Number	T590		
Location	Trinidad		
Recorded By	C. Sisneros		
Witnessed By	Mr. Bill Vigil		

<<< Fold Here >>>

All interpretations are opinions based on inferences from electrical or other measurements and we cannot and do not guarantee the accuracy or correctness of any interpretation, and we shall not, except in the case of gross or willful negligence on our part, be liable or responsible for any loss, costs, damages, or expenses incurred or sustained by anyone resulting from any interpretation made by any of our officers, agents or employees. These interpretations are also subject to our general terms and conditions set out in our current Price Schedule.

#### Comments

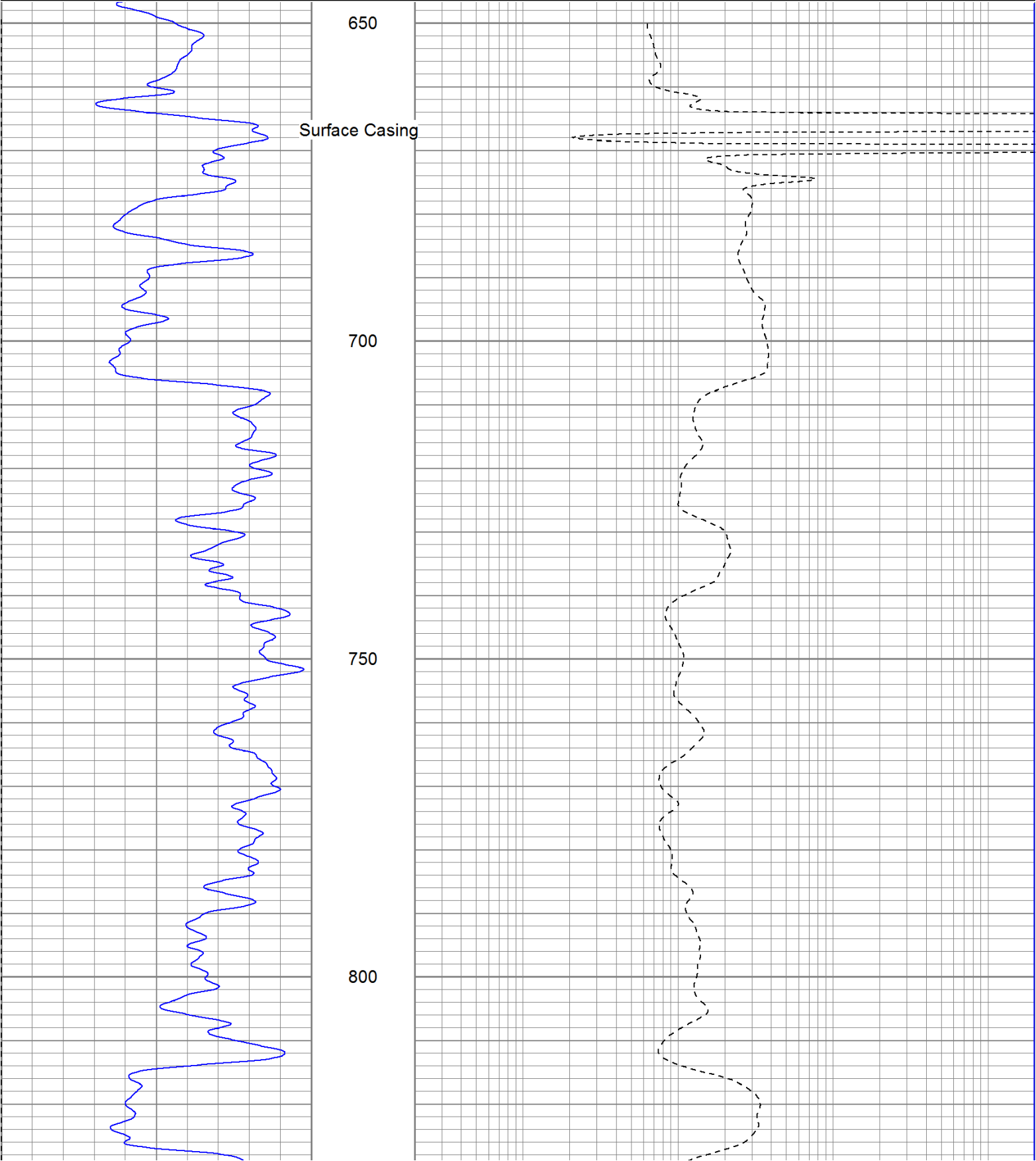
#### Directions:

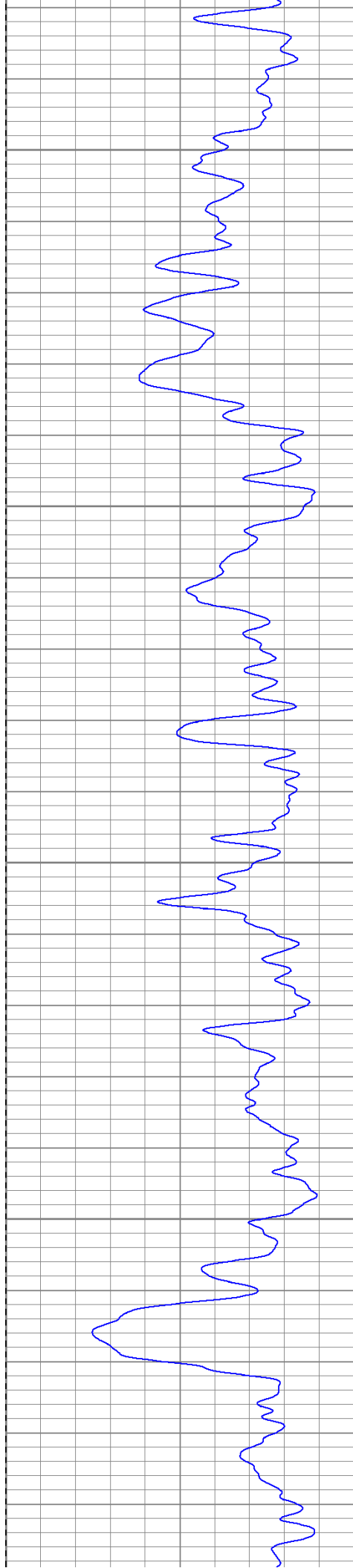
Reilly Canyon, stay left at post office. Left on C.R. 31.0 towards Cottontail Compressor.  
Take 2nd left, straight across from road to Cottontail, and first right to location.

Database File: grantstr.db  
Dataset Pathname: pass2.1  
Presentation Format: iel  
Dataset Creation: Mon May 16 19:31:49 2011 by Calc Open-Cased 110302  
Charted by: Depth in Feet scaled 1:240

0	GR (GAPI)	200
-200	SP (mV)	0

0.2	DIR (Ohm-m)	2000
0.2	SN (Ohm-m)	2000



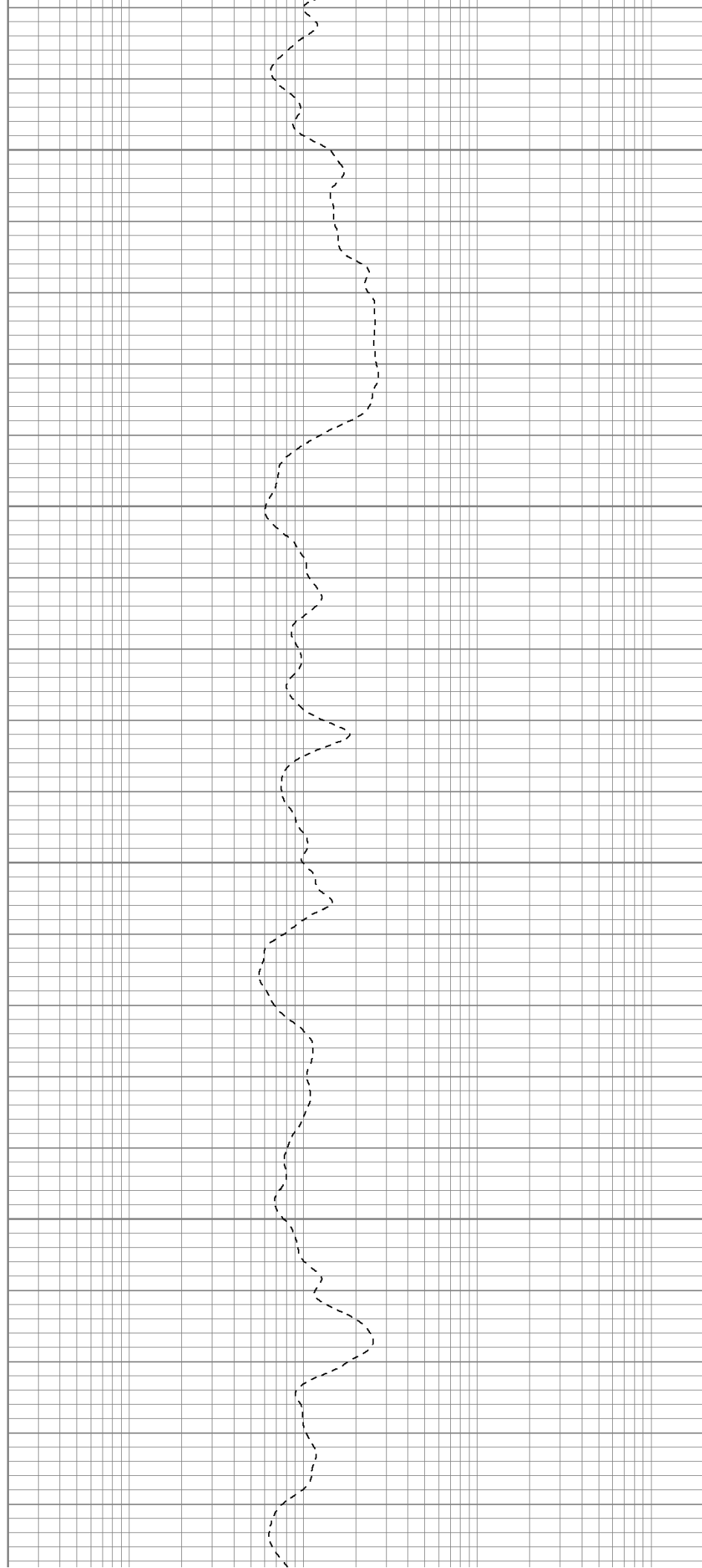


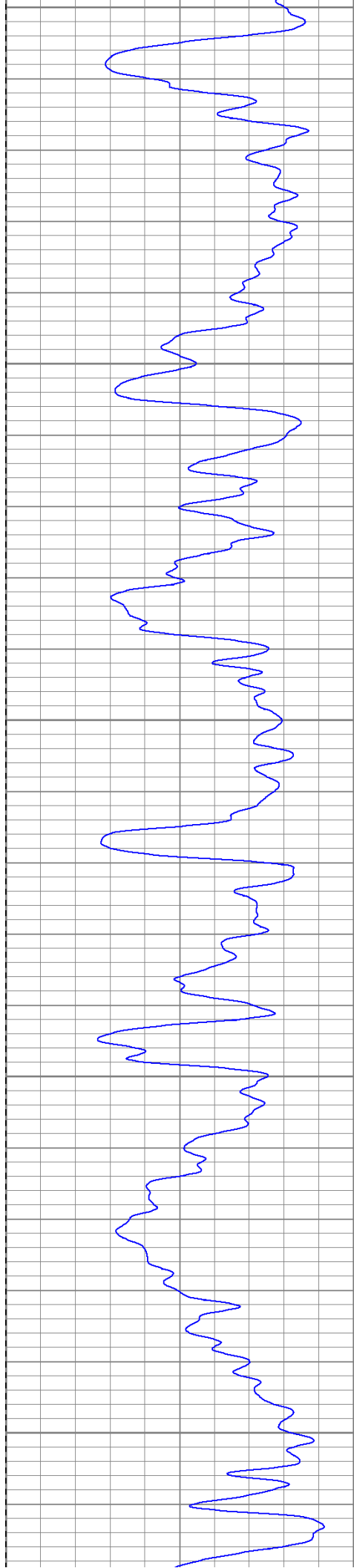
850

900

950

1000





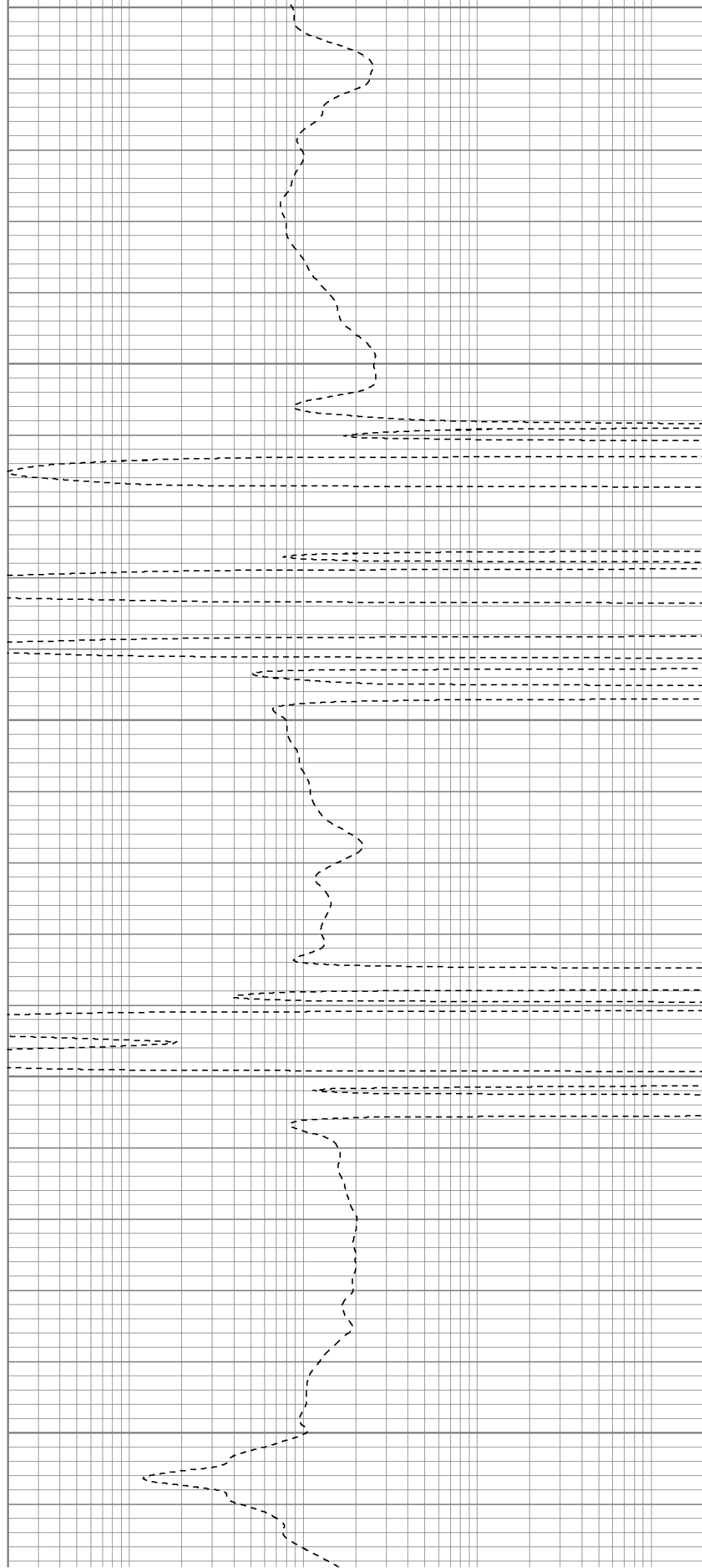
1050

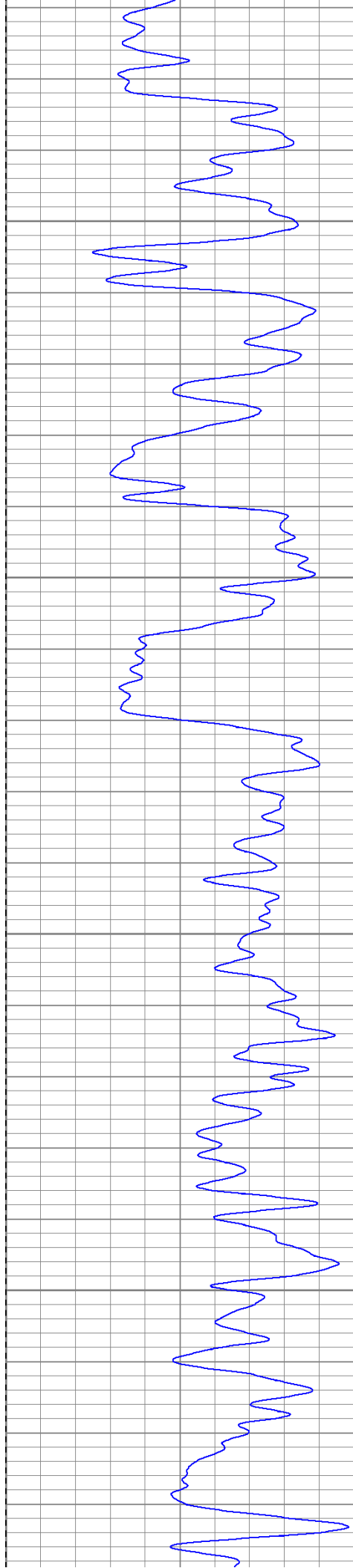
1100

1150

1200

1250



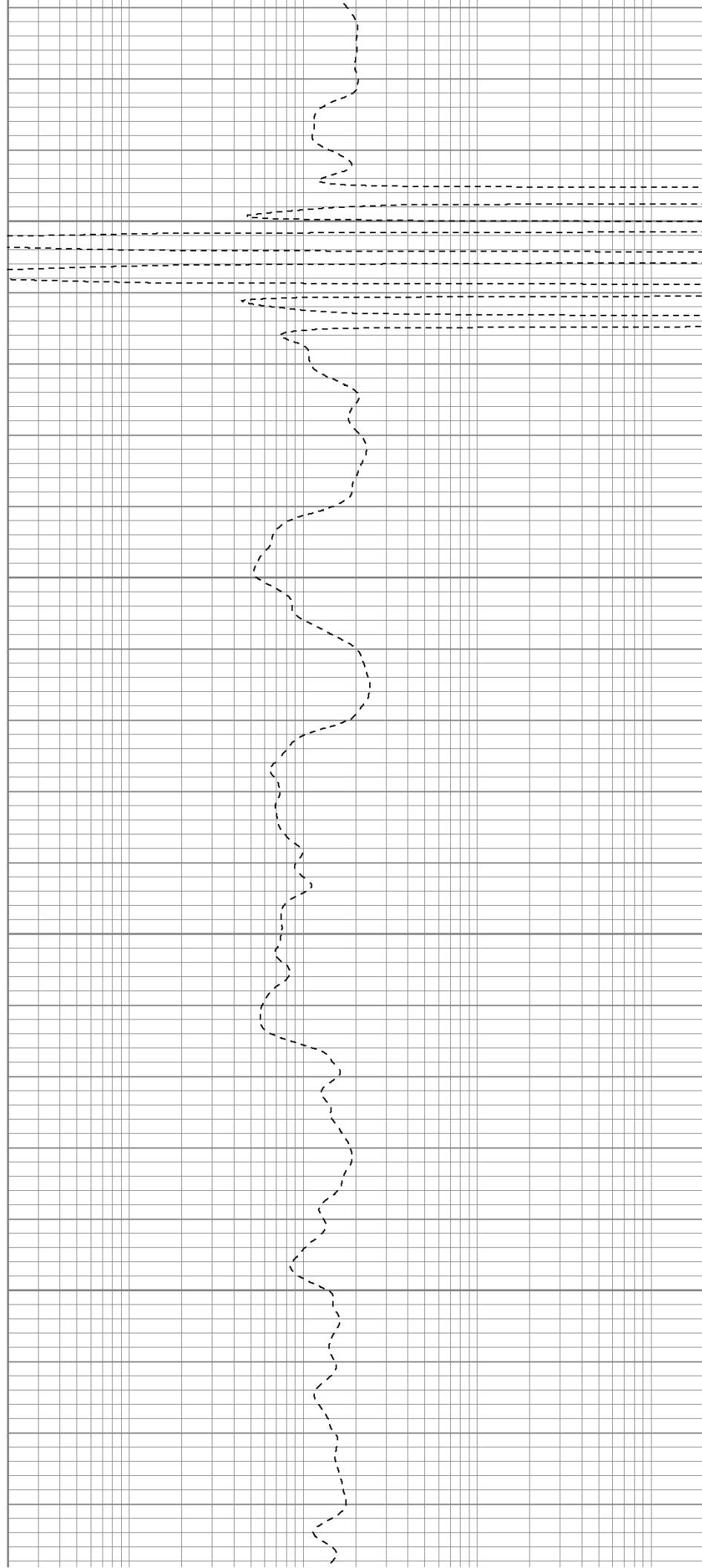


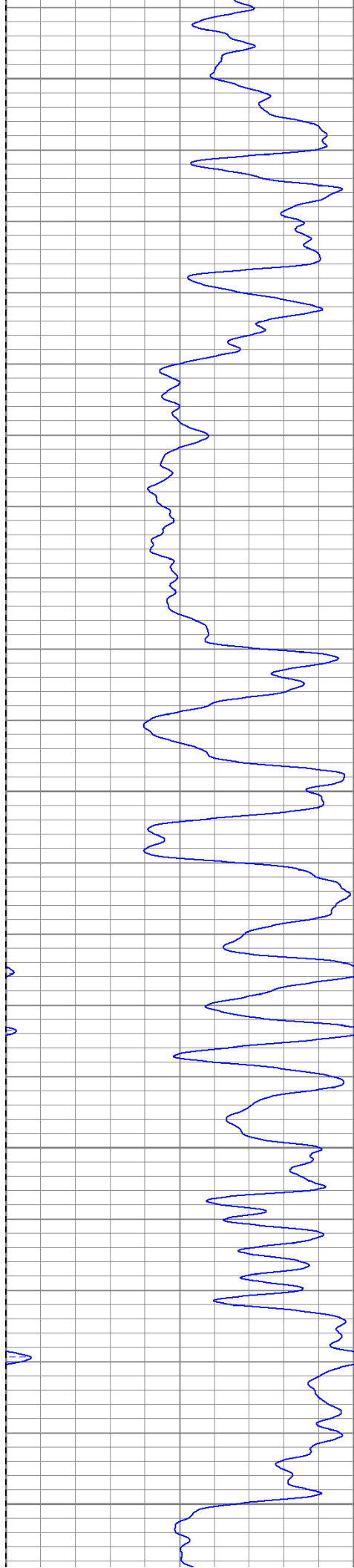
1300

1350

1400

1450





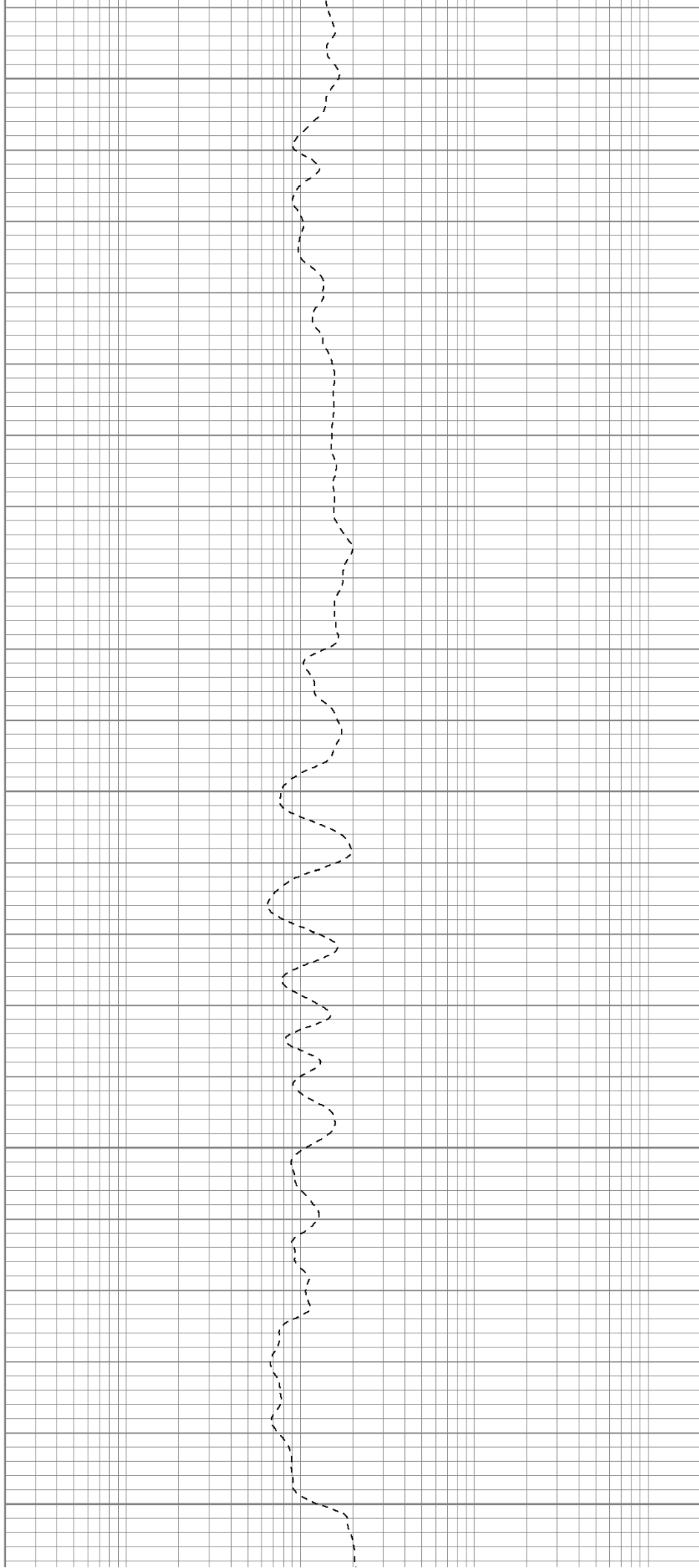
1500

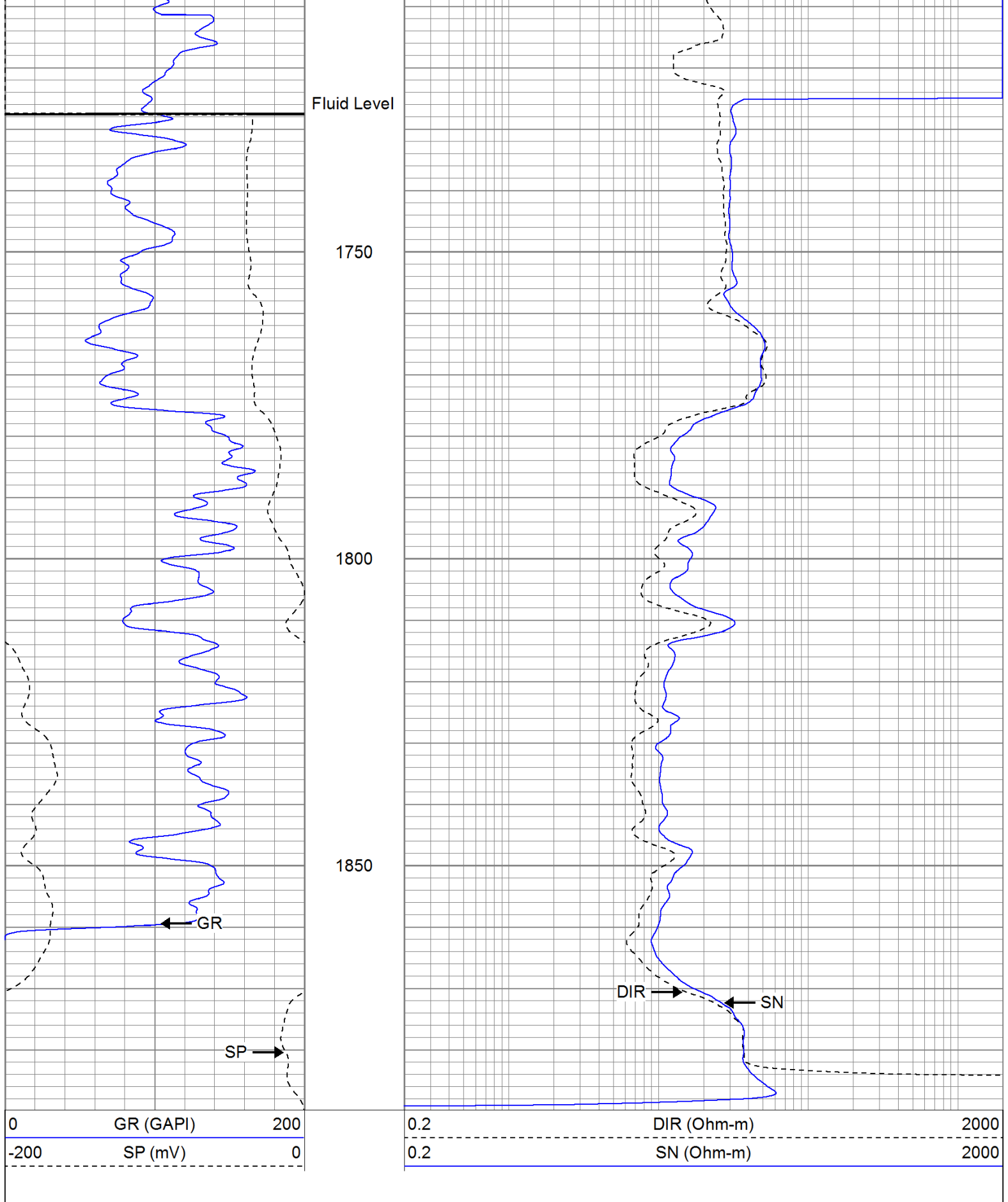
1550

1600

1650

1700

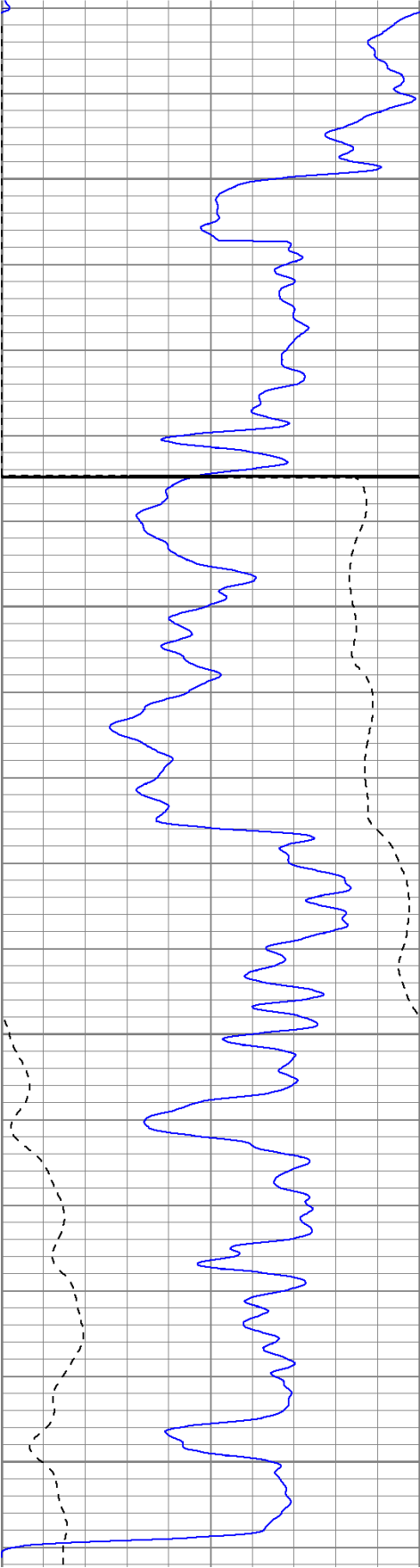




Database File: grantstr.db  
Dataset Pathname: pass1.1  
Presentation Format: iel  
Dataset Creation: Mon May 16 19:42:50 2011 by Calc Open-Cased 110302  
Charted by: Depth in Feet scaled 1:240

0	GR (GAPI)	200
-200	SP (mV)	0

0.2	DIR (Ohm-m)	2000
0.2	SN (Ohm-m)	2000

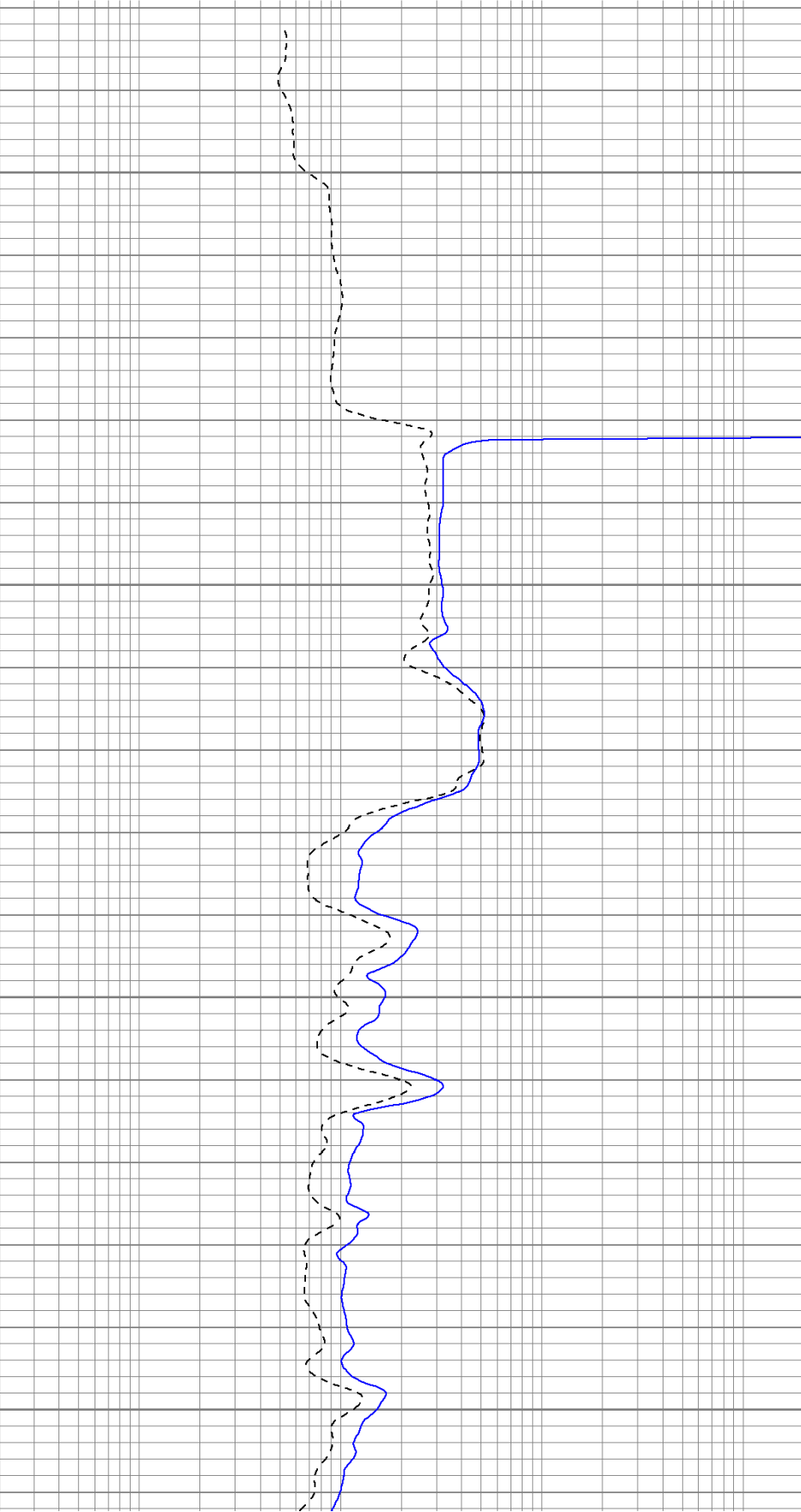


1700

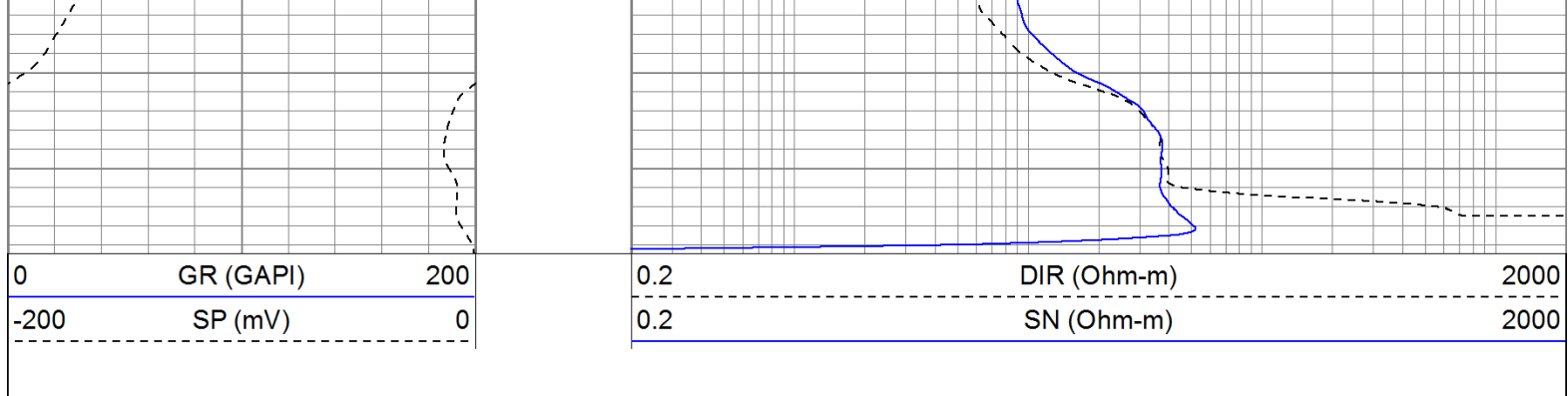
1750

1800

1850







### Calibration Report

Database File: grantstr.db  
 Dataset Pathname: pass1  
 Dataset Creation: Mon May 16 02:06:50 2011 by Log Open-Cased 110302

### Induction Tool Calibration Report

Serial Number: 701  
 Tool Model: Probe  
 Downhole Cal Performed: Fri May 13 12:26:14 2011  
 Surface Cal Performed: Wed Apr 27 12:27:07 2011  
 After Survey Verification Performed:

Surface Calibration:	Air	Loop	
Conductivity Reference:	0.000	500.000	mmho
Conductivity Reading:	0.006	0.644	V
Internal Reference:	Zero	Cal	
Conductivity Reference:	0.000	500.000	mmho
Conductivity Reading:	0.007	0.643	V

Downhole Calibration:	Internal Zero	Internal Cal	
Conductivity Reference:	0.703	499.163	mmho
Conductivity Reading:	0.000	0.000	V
Short Normal Reference:	0.000	20.000	Ohm-m
Short Normal Reading:	0.005	0.214	V

Results:	Gain	Offset
Loop Conductivity:	783.886	-4.674
Downhole Correction:	1.000	0.000
Short Normal Resistivity:	95.281	-0.432

After Survey Verification	Internal Zero	Internal Cal	
Conductivity Reading:	0.000	0.000	V
Conductivity Result:	0.000	0.000	mmho
Short Normal Reading:	0.000	0.000	V
Short Normal Result:	0.000	0.000	Ohm-m

### Compensated Density Calibration Report

Serial-Model: 901-2.75POH  
 Source / Verifier: /  
 Master Calibration Performed: Sat Apr 30 08:01:03 2011  
 Before Survey Verification Performed:  
 After Survey Verification Performed:



### Master Calibration

	Density		Far Detector	Near Detector	
Magnesium	1.710	g/cc	1001.79	578.48	cps
Aluminum	2.590	g/cc	180.36	300.39	cps

Spine Angle = 69.08

Density/Spine Ratio = 0.479

	<div>Size</div>		<div>Reading</div>	
Small Ring	8.00	in	2.47	V
Large Ring	17.00	in	4.50	V
Before Survey Verification				
	<div>Target</div>		<div>Measured</div>	
		g/cc		g/cc
		g/cc		g/cc
		g/cc		g/cc
After Survey Verification				
	<div>Target</div>		<div>Measured</div>	
		g/cc		g/cc
		g/cc		g/cc
		g/cc		g/cc
Neutron Calibration Report				
Serial Number:	802			
Tool Model:	2.75POH			
Performed:	Tue May 03 12:28:21 2011			
Calibrator Value:	700	NAPI		
Calibrator Reading:	1000	cps		
Sensitivity:	0.7	NAPI/cps		
Gamma Ray Calibration Report				
Serial Number:	801			
Tool Model:	2.75POH			
Performed:	Thu May 05 13:29:10 2011			
Calibrator Value:	200.0	GAPI		
Background Reading:	8.0	cps		
Calibrator Reading:	264.7	cps		
Sensitivity:	0.6500	GAPI/cps		

Sensor	Offset (ft)	Schematic	Description	Len (ft)	OD (in)	Wt (lb)
GR	29.58		None	0.75	1.50	5.00
			GR-2.75POH (801) Probe 2.75" Probe Open Hole Gamma Ray	3.73	2.75	43.00
NEU	24.04		NEU-2.75POH (802) Probe Epithermal	4.75	2.75	58.00
			GR-2.75POH (801)	3.73	2.75	43.00

LSD	16.21		Cable Log	CDL-2.75POH (901)	8.43	2.75	106.00
DCAL	15.94						
SSD	15.69						
DIC	6.24			IEL-Probe (701)	13.46	2.75	93.00
SP	2.25						
SN	1.71						
				Dataset:	grantstr.db: field/well/run1/pass1		
				Total Length:	31.11 ft		
				Total Weight:	305.00 lb		
				O.D.	2.75 in		