
NOBLE ENERGY INC E-BUSINESS

**RULISON FED 20-11B
RULISON
Garfield County , Colorado**

Cement Surface Casing
04-Mar-2011

Post Job Report

The Road to Excellence Starts with Safety

Sold To #: 345242	Ship To #: 2819935	Quote #:	Sales Order #: 7982444
Customer: NOBLE ENERGY INC E-BUSINESS		Customer Rep: Wilkerson, Kenny	
Well Name: RULISON FED	Well #: 20-11B	API/UWI #: 05-045-18780	
Field: RULISON	City (SAP): RIFLE	County/Parish: Garfield	State: Colorado
Lat: N 39.433 deg. OR N 39 deg. 25 min. 59.567 secs.		Long: W 107.918 deg. OR W -108 deg. 4 min. 56.071 secs.	
Contractor: H&P 322	Rig/Platform Name/Num: H&P 322		
Job Purpose: Cement Surface Casing			
Well Type: Development Well		Job Type: Cement Surface Casing	
Sales Person: METLI, MARSHALL	Srvc Supervisor: HUGENTOBLE, LOGAN		MBU ID Emp #: 447333

Job Personnel

HES Emp Name	Exp Hrs	Emp #	HES Emp Name	Exp Hrs	Emp #	HES Emp Name	Exp Hrs	Emp #
HUGENTOBLE, LOGAN Mark	6	447333	SMITH, DUSTIN Michael	6	418015	WOLFE, JON P	6	485217
WYCOFF, CHARLES Edward	6	100165						

Equipment

HES Unit #	Distance-1 way	HES Unit #	Distance-1 way	HES Unit #	Distance-1 way	HES Unit #	Distance-1 way
10011429	60 mile	10744648C	60 mile	10783493	60 mile	10822007	60 mile
10829463	60 mile	10998508	60 mile				

Job Hours

Date	On Location Hours	Operating Hours	Date	On Location Hours	Operating Hours	Date	On Location Hours	Operating Hours
3/4/11	6	1						

TOTAL Total is the sum of each column separately

Job

Formation Name					Date	Time	Time Zone	
Formation Depth (MD)	Top		Bottom		Called Out	04 - Mar - 2011	07:00	MST
Form Type			BHST		On Location	04 - Mar - 2011	11:00	MST
Job depth MD	1531. ft		Job Depth TVD	1531. ft	Job Started	04 - Mar - 2011	14:18	MST
Water Depth			Wk Ht Above Floor	. ft	Job Completed	04 - Mar - 2011	15:15	MST
Perforation Depth (MD)	From		To		Departed Loc	04 - Mar - 2011	17:30	MST

Well Data

Description	New / Used	Max pressure psig	Size in	ID in	Weight lbm/ft	Thread	Grade	Top MD ft	Bottom MD ft	Top TVD ft	Bottom TVD ft
-------------	------------	-------------------	---------	-------	---------------	--------	-------	-----------	--------------	------------	---------------

Tools and Accessories

Type	Size	Qty	Make	Depth	Type	Size	Qty	Make	Depth	Type	Size	Qty	Make
Guide Shoe					Packer					Top Plug	8.625	1	HES
Float Shoe					Bridge Plug					Bottom Plug			
Float Collar					Retainer					SSR plug set			
Insert Float										Plug Container			
Stage Tool										Centralizers			

Miscellaneous Materials

Gelling Agt		Conc		Surfactant		Conc		Acid Type		Qty		Conc	%
Treatment Fld		Conc		Inhibitor		Conc		Sand Type		Size		Qty	

Fluid Data

Stage/Plug #: 1									
Fluid #	Stage Type	Fluid Name	Qty	Qty uom	Mixing Density lbm/gal	Yield ft3/sk	Mix Fluid Gal/sk	Rate bbl/min	Total Mix Fluid Gal/sk

Stage/Plug #: 1

Stage/Plug #: 1									
Fluid #	Stage Type	Fluid Name	Qty	Qty uom	Mixing Density lbm/gal	Yield ft ³ /sk	Mix Fluid Gal/sk	Rate bbl/min	Total Mix Fluid Gal/sk
1	Fresh Water Spacer		20.00	bbl	.	.0	.0	6	
2	Lead Cement	VERSACEM (TM) SYSTEM (452010)	231.0	sacks	12.3	2.38	13.75	6	13.75
3	Tail Cement	VERSACEM (TM) SYSTEM (452010)	122.0	sacks	12.8	2.11	11.75	6	11.75
4	Displacement		91.00	bbl	.	.0	.0	7	
Calculated Values		Pressures		Volumes					
Displacement	90	Shut In: Instant		Lost Returns	0	Cement Slurry	144	Pad	
Top Of Cement	SURFACE	5 Min		Cement Returns	10	Actual Displacement	69	Treatment	
Frac Gradient		15 Min		Spacers	20	Load and Breakdown		Total Job	
Rates									
Circulating	7	Mixing	6	Displacement	7	Avg. Job	6		
Cement Left In Pipe	Amount	0 ft	Reason	Shoe Joint					
Frac Ring # 1 @	ID	Frac ring # 2 @	ID	Frac Ring # 3 @	ID	Frac Ring # 4 @	ID		
The Information Stated Herein Is Correct				Customer Representative Signature					

The Road to Excellence Starts with Safety

Sold To #: 345242	Ship To #: 2819935	Quote #:	Sales Order #: 7982444
Customer: NOBLE ENERGY INC E-BUSINESS		Customer Rep: Wilkerson, Kenny	
Well Name: RULISON FED		Well #: 20-11B	API/UWI #: 05-045-18780
Field: RULISON	City (SAP): RIFLE	County/Parish: Garfield	State: Colorado
Legal Description:			
Lat: N 39.433 deg. OR N 39 deg. 25 min. 59.567 secs.		Long: W 107.918 deg. OR W -108 deg. 4 min. 56.071 secs.	
Contractor: H&P 322		Rig/Platform Name/Num: H&P 322	
Job Purpose: Cement Surface Casing			Ticket Amount:
Well Type: Development Well		Job Type: Cement Surface Casing	
Sales Person: METLI, MARSHALL		Srv Supervisor: HUGENTOBLE, LOGAN	MBU ID Emp #: 447333

Activity Description	Date/Time	Cht #	Rate bbl/min	Volume bbl		Pressure psig		Comments
				Stage	Total	Tubing	Casing	
Call Out	03/04/2011 07:00							
Pre-Convoy Safety Meeting	03/04/2011 09:00							ALL HES EMPLOYEES
Arrive At Loc	03/04/2011 11:00							RIG STILL RUNNING CASING
Assessment Of Location Safety Meeting	03/04/2011 11:15							ALL HES EMPLOYEES
Rig-Up Equipment	03/04/2011 11:25							1 HT-400 PUMP TRUCK, 1 660 BULK TRUCK, 1 BODY LOAD, 1 F-450 P/U,
Pre-Job Safety Meeting	03/04/2011 14:00							ALL HES EMPLOYEES, RIG CREW, CO REP AND ANY 3RD PARTY VENDORS
Start Job	03/04/2011 14:18							TP 1530.5 FT, TD 1541 FT, FC 1492 FT, HOLE 12.25", MUD WT 9 PPG, RATE WILL BE , WILL BUMP 500 PSI OVER LAND PSI, RIG CIRCULATED HOLE FOR 1 HRS
Pump Water	03/04/2011 14:20		2	2			40.0	FILL LINES PRIOR TO PRESSURE TESTING LINES
Pressure Test	03/04/2011 14:22							NO LEAKS, KICK OUTS SET TO 3000 PSI FOR TEST.
Pump Spacer 1	03/04/2011 14:25		6	20			66.0	FRESH WATER
Activity Description	Date/Time	Cht #	Rate bbl/min	Volume bbl		Pressure psig		Comments
				Stage	Total	Tubing	Casing	

Sold To # : 345242

Ship To # :2819935

Quote # :

Sales Order # :

7982444

SUMMIT Version: 7.20.130

Monday, March 07, 2011 03:19:00

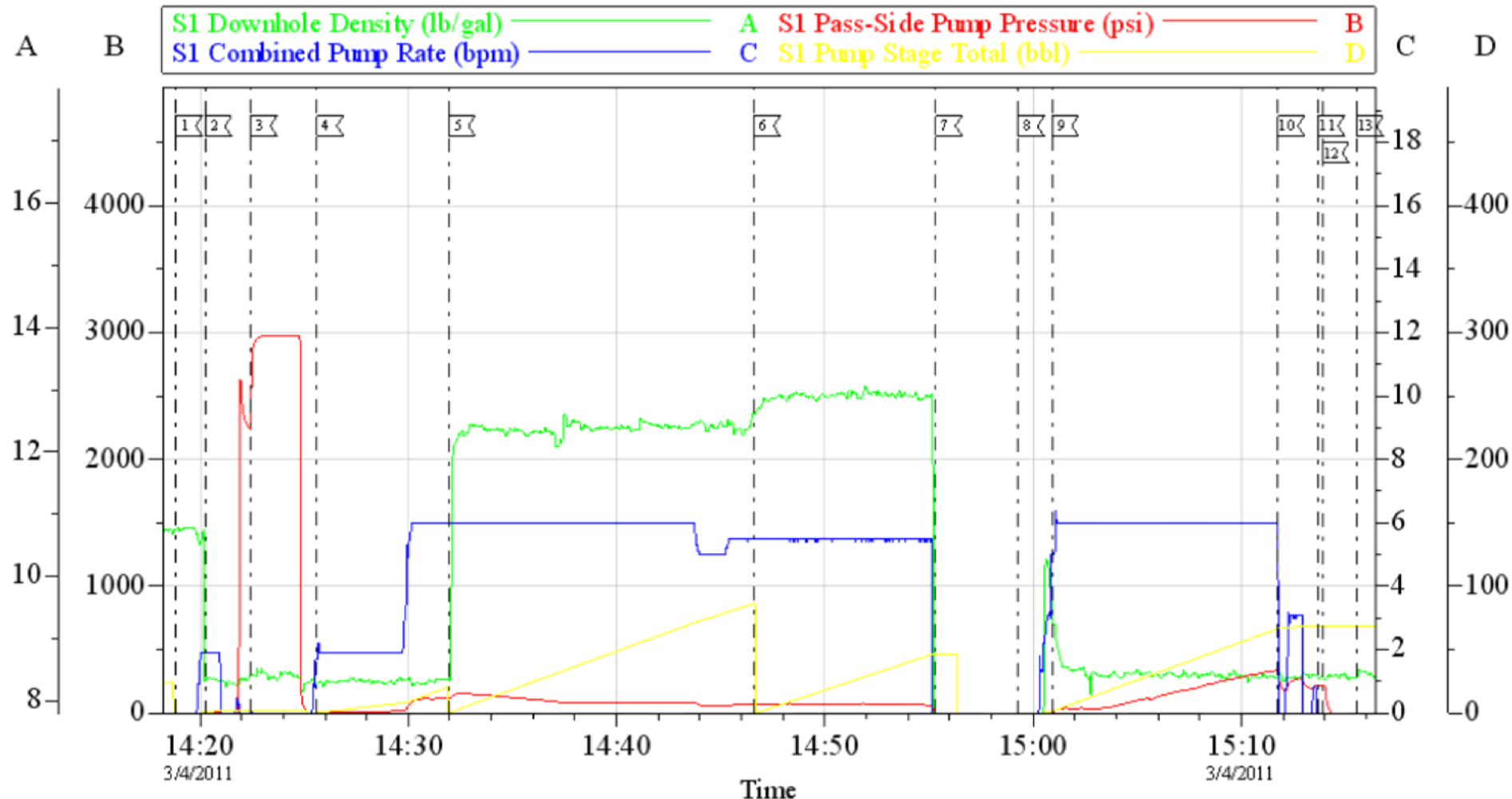
Pump Lead Cement	03/04/2011 14:31		6	98			125.0	231 SKS VERSACEM CMT TO BE MIXED AT 12.3 PPG, 2.38 YIELD, 13.75 GAL/SK, CMT TO BE WEIGHED VIA PRESSURE BALANCED MUD SCALES WET AND DRY SAMPLES SUBMITTED.
Pump Tail Cement	03/04/2011 14:46		6	46			154.0	122 SKS VERSACEM CMT TO BE MIXED AT 12.8 PPG, 2.38 YIELD, 11.75 GAL/SK, CMT TO BE WEIGHED VIA PRESSURE BALANCED MUD SCALES, WET AND DRY SAMPLES SUBMITTED,
Shutdown	03/04/2011 14:55							
Drop Plug	03/04/2011 14:59							PLUG LAUNCHED
Pump Displacement	03/04/2011 15:00		7	69			107.0	FRESH WATER
Slow Rate	03/04/2011 15:11		2	59			110.0	10 BBLS PRIOR TO CALCULATED DISPLACEMENT
Shutdown	03/04/2011 15:13							AFTER 10 BBLS GOOD CEMENT TO SURFACE WE SHUTDOWN PER KENNY
Check Floats	03/04/2011 15:13							FLOATS HOLDING
End Job	03/04/2011 15:15							THANK YOU FOR USING HES LOGAN HUGENTOBLE AND CREW
Post-Job Safety Meeting (Pre Rig-Down)	03/04/2011 15:20							ALL HES EMPLOYEES
Rig-Down Equipment	03/04/2011 15:30							
Pre-Convoy Safety Meeting	03/04/2011 17:30							ALL HES EMPLOYEES
Crew Leave Location	03/04/2011 17:40							LOCATION CLEAN

Total Depth = 1541, Total pipe = 1530.5, Shoe Joint = 38.49, Mud Weight = 9# . Pumped the job offline with a swedge. Removed quicklatch and plug container charges off ticket. 10 bbls cement returns then shutdown per Kenny. The plug did not land, only displaced 69 bbl displacement and the floats held. 😊

Thank you for using Grand Junction Halliburton.

NOBLE

8.625 SURFACE PIPE



Local Event Log			
1 START JOB	14:18:51	2 PRIME LINES	14:20:16
3 PRESSURE TEST	14:22:27	4 PUMP H2O SPACER	14:25:37
5 PUMP LEAD CEMENT	14:31:57	6 PUMP TAIL CEMENT	14:46:36
7 SHUTDOWN	14:55:20	8 DROP TOP PLUG	14:59:16
9 PUMP DISPLACEMENT	15:00:55	10 SLOW RATE	15:11:45
11 SHUTDOWN	15:13:41	12 CHECK FLOATS	15:13:54
13 END JOB	15:15:33		

Customer: NOBLE
Well Description: FED 20-11B
Company Rep: KENNY WILKERSON

Job Date: 04-Mar-2011
Job Type: SURFACE
Cement Supervisor: LOGAN HUGENTOBLER

Sales Order #: 7982444
ADC Used: YES
Elite #6/Operator: RYAN WYCOFF

OptiCem v6.4.10
04-Mar-11 15:26