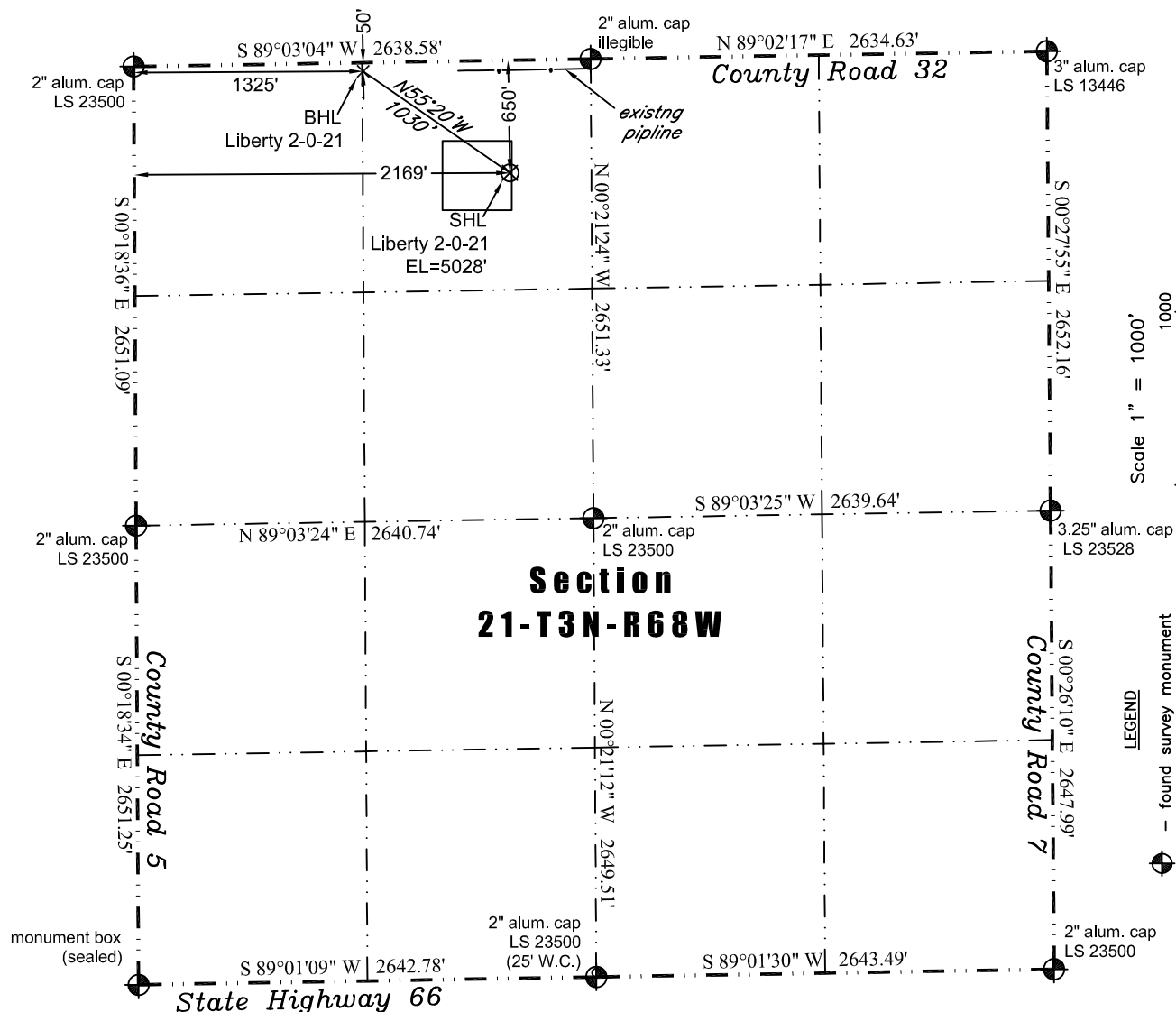


PLS Group, LLC  
109 Coronado Ct. - Bldg. 7  
Fort Collins, Colorado 80525  
P. 970-282-3446 Fx. 970-377-6767

# WELL LOCATION CERTIFICATE

*THIS MAP DOES NOT  
REPRESENT A BOUNDARY SURVEY*



In accordance with a request from Dave Bale of EnCana Oil & Gas (USA) Inc., PLS Group, LLC has determined the location of the **Liberty 2-0-21** well site to be SHL 650' FNL and 2169' FWL (BHL 50' FNL and 1325' FWL) as measured at ninety (90) degrees from the section lines of Section 21, Township 3 North, Range 68 West of the 6th Principal Meridian, Weld County, Colorado.

## Proposed Surface Hole Data:

Latitude: N 40.21680° (BHL 40.21842°)  
Longitude: W 105.00954° (BHL 105.01256°)  
PDOP: 2.0

## Nearest:

Building 603' northeast	Above Ground Utility 629' north
Public Road 632' north	Railroad 466' southeast
Property Line 470' east	Well Window: SHL is 10' inside
Existing Well: Runyan #1 3,544' northwest	

## Notes:

- 1) Bearings and distances based on NAD 83 Colorado North State Plane Coordinates using RTK GPS observations taken 5/24/11 by operator Craig Burke.
- 2) Conversion factor to ground (1.00027924).
- 3) Elevations based on NAVD 88 GPS heights and Geoid 2003 corrections.
- 4) See improvement map for visible improvements within 400 feet.
- 5) The surface use is irrigated cropland.

**NOTICE:** According to Colorado law you must commence any legal action based upon any defect in this W.L.C. within three years after you first discover such defect. In no event may any action based upon any defect in this W.L.C. be commenced more than ten years from this said date of the certification shown hereon.

I hereby certify that this Well Location Certificate was prepared by me or under my direct supervision on 6/1/2011 for and on behalf of EnCana Oil & Gas (USA) Inc. That it is not a Land Survey Plat or an Improvement Survey Plat and that it is not to be relied upon for establishment of fences, buildings, or other future improvement lines.



John Robert McGehee LS#38219  
Well: Liberty 2-0-21 WLC