

The Road to Excellence Starts with Safety

The Road to Excellence Starts With Safety								
Sold To #: 353810		Ship To #: 2855647		Quote #:		Sales Order #: 8202326		
Customer: XTO ENERGY INC EBUSINESS				Customer Rep: Coffee, Ron				
Well Name: Hill Ranch			Well #: 02-08			API/UWI #:		
Field:		City (SAP): TRINIDAD		County/Parish: Las Animas			State: Colorado	
Contractor: ??			Rig/Platform Name/Num: ??					
Job Purpose: Cement Multiple Stages								
Well Type: Development Well			Job Type: Cement Multiple Stages					
Sales Person: FLING, MATTHEW			Srcv Supervisor: WHEELER, JUSTIN			MBU ID Emp #: 196470		

Job Personnel

HES Emp Name	Exp Hrs	Emp #	HES Emp Name	Exp Hrs	Emp #	HES Emp Name	Exp Hrs	Emp #
BULINSKI, MATTHEW J	7.5	483865	CHAVEZ, JEROME Christophe	7.5	458298	GIBBS, JASON Edwin	7.5	300487
LYNCH, JACK William	7.5	483039	PAUMEN, CORD Anthony	7.5	453759	WHEELER, JUSTIN W	7.5	196470

Equipment

HES Unit #	Distance-1 way	HES Unit #	Distance-1 way	HES Unit #	Distance-1 way	HES Unit #	Distance-1 way
10824253C	42 mile	10948694	42 mile	11026160	42 mile	11515861C	42 mile
11562570C	42 mile	10857012	42 mile	11566182	42 mile	11645063	42 mile

Job Hours

Date	On Location Hours	Operating Hours	Date	On Location Hours	Operating Hours	Date	On Location Hours	Operating Hours
5-29-11	7.5	3						

TOTAL

Total is the sum of each column separately

Job

Job Times

Formation Name	Formation Depth (MD)	Top	Bottom	Form Type	Job depth MD	Job Depth TVD	Water Depth	Perforation Depth (MD)	From	To	Called Out	On Location	Job Started	Job Completed	Departed Loc
				BHST	2312. ft	2312. ft	Wk Ht Above Floor				28 - May - 2011	29 - May - 2011	29 - May - 2011	29 - May - 2011	29 - May - 2011
											22:00	04:30	08:53	11:17	12:00
											MST	MST	MST	MST	MST

Well Data

Description	New / Used	Max pressure psig	Size in	ID in	Weight lbm/ft	Thread	Grade	Top MD ft	Bottom MD ft	Top TVD ft	Bottom TVD ft
13 3/8" Openhole				7.875				492.	2312.		
Multiple Stage Cementer	Unknown								1444.		
5 1/2" Production Casing	Unknown		5.5	4.95	15.5		J-55		2312.		
8 5/8" Surface Casing	Unknown		8.625	8.097	24.		J-55		492.		

Tools and Accessories

Type	Size	Qty	Make	Depth	Type	Size	Qty	Make	Depth	Type	Size	Qty	Make
Guide Shoe					Packer					Top Plug			
Float Shoe					Bridge Plug					Bottom Plug			
Float Collar	5 1/2"			2264'	Retainer					SSR plug set	5 1/2"	1	
Insert Float										Plug Container			
Stage Tool	5 1/2"	1		1444'						Centralizers			

Miscellaneous Materials

Gelling Agt	Conc	Surfactant	Conc	Acid Type	Qty	Conc	%
Treatment Fld	Conc	Inhibitor	Conc	Sand Type	Size	Qty	

Fluid Data

Stage/Plug #: 1

Fluid #	Stage Type	Fluid Name	Qty	Qty uom	Mixing Density lbm/gal	Yield ft ³ /sk	Mix Fluid Gal/sk	Rate bbl/min	Total Mix Fluid Gal/sk
1	FRESH WATER		10	bbl	8.33	.0	.0	.0	
2	GELLED WATER		20	bbl	8.33	.0	.0	.0	
		0.2 gal/Mgal	LGC-VI UC, BULK (101582755)						
3	TUNED LIGHT TRINIDAD	TUNED LIGHT (TM) SYSTEM (452984)	135	sacks	10.	2.24	7.93		7.93
		7.93 Gal	FRESH WATER						
4	DISPLACEMENT		53.9	bbl	8.33	.0	.0	.0	
Stage/Plug #: 2									
Fluid #	Stage Type	Fluid Name	Qty	Qty uom	Mixing Density uom	Yield uom	Mix Fluid uom	Rate uom	Total Mix Fluid uom
1	FRESH WATER		10	bbl	8.33	.0	.0	.0	
2	GELLED WATER		20	bbl	8.33	.0	.0	.0	
		0.2 gal/Mgal	LGC-VI UC, BULK (101582755)						
3	TUNED LIGHT TRINIDAD	TUNED LIGHT (TM) SYSTEM (452984)	165	sacks	10.	2.24	7.93		7.93
		7.93 Gal	FRESH WATER						
4	DISPLACEMENT		34.4	bbl	8.33	.0	.0	.0	
Calculated Values		Pressures		Volumes					
Displacement	53.9 / 34.4	Shut In: Instant	205	Lost Returns	Yes	Cement Slurry	113.7	Pad	
Top Of Cement	Surface	5 Min		Cement Returns	17 bbls	Actual Displacement		Treatment	
Frac Gradient		15 Min		Spacers		Load and Breakdown		Total Job	
Rates									
Circulating		Mixing		Displacement		Avg. Job			
Cement Left in Pipe	Amount	0 ft	Reason	Shoe Joint					
Frac Ring # 1 @	ID	Frac ring # 2 @	ID	Frac Ring # 3 @	ID	Frac Ring # 4 @	ID		
The Information Stated Herein Is Correct				Customer Representative Signature					

The Road to Excellence Starts with Safety

The Road to Excellence Starts with Safety			
Sold To #: 353810	Ship To #: 2855647	Quote #:	Sales Order #: 8202326
Customer: XTO ENERGY INC EBUSINESS		Customer Rep: Coffee, Ron	
Well Name: Hill Ranch		Well #: 02-08	API/UWI #:
Field:	City (SAP): TRINIDAD	County/Parish: Las Animas	State: Colorado
Legal Description:			
Lat:		Long:	
Contractor: ??		Rig/Platform Name/Num: ??	
Job Purpose: Cement Multiple Stages			Ticket Amount:
Well Type: Development Well		Job Type: Cement Multiple Stages	
Sales Person: FLING, MATTHEW	Srv Supervisor: WHEELER, JUSTIN	MBU ID Emp #: 196470	

Activity Description	Date/Time	Cht #	Rate bbl/min	Volume bbl		Pressure psig		Comments
				Stage	Total	Tubing	Casing	
Depart from Service Center or Other Site	05/29/2011 02:00							
Arrive At Loc	05/29/2011 04:30							
Safety Meeting - Pre Rig-Up	05/29/2011 08:00							
Test Lines	05/29/2011 08:53							
Pump Spacer	05/29/2011 08:56		3	65			.0	Pump Fresh Water
Pump Spacer	05/29/2011 09:12		3	20			.0	Pump Gelled Water
Pump Cement	05/29/2011 09:22		3	53.9			20.0	Mix and Pump 135 sks Tuned Light Cement @ 10 lb/gal
Drop Plug	05/29/2011 09:38							Shut-Down, Drop Plug
Pump Displacement - Start	05/29/2011 09:43		3	0			.0	Pump Fresh Water Displacement
Pump Displacement - End	05/29/2011 10:00		2	53.9			.0	No Returns Throughout 1st Stage
Bump Plug	05/29/2011 10:00		2	53.9			505.0	
Check Floats	05/29/2011 10:03							Floats Holding
Drop Opening Device For Multiple Stage Cementer	05/29/2011 10:07							
Pressure Up	05/29/2011 10:09							
Open Multiple Stage Cementer	05/29/2011 10:09						1915.0	Tool Opens at 1915
Pump Spacer	05/29/2011 10:11		1.5	10			.0	Pump Fresh Water
Pump Spacer	05/29/2011 10:16		1.5	20			.0	Pump Gelled Water

Sold To # : 353810

Ship To # : 2855647

Quote # :

Sales Order # :

8202326

SUMMIT Version: 7.20.130

Sundav. May 29. 2011 11:39:00

Activity Description	Date/Time	Cht #	Rate bbl/min	Volume bbl		Pressure psig		Comments
				Stage	Total	Tubing	Casing	
Pump Cement	05/29/2011 10:32		3	59.8			.0	Mix and Pump 150 sks Tuned Light Cement @ 10 lb/gal
Drop Plug	05/29/2011 10:59							Shut-Down, Drop Plug
Pump Displacement - Start	05/29/2011 11:00		3	0			.0	Pump Fresh Water Displacement
Cement Returns to Surface	05/29/2011 11:05		3	17			90.0	17 bbls Cement to Surface
Pump Displacement - End	05/29/2011 11:13		2	34.4			205.0	Established Returns With 10 bbls Cement Left to Pump
Bump Plug	05/29/2011 11:13		2	34.4			1900. 0	
Close Multiple Stage Cementer	05/29/2011 11:14						1895. 0	
End Job	05/29/2011 11:17							
Safety Meeting - Pre Rig- Down	05/29/2011 11:30							
Safety Meeting - Departing Location	05/29/2011 12:00							

Sold To # : 353810

Ship To # : 2855647

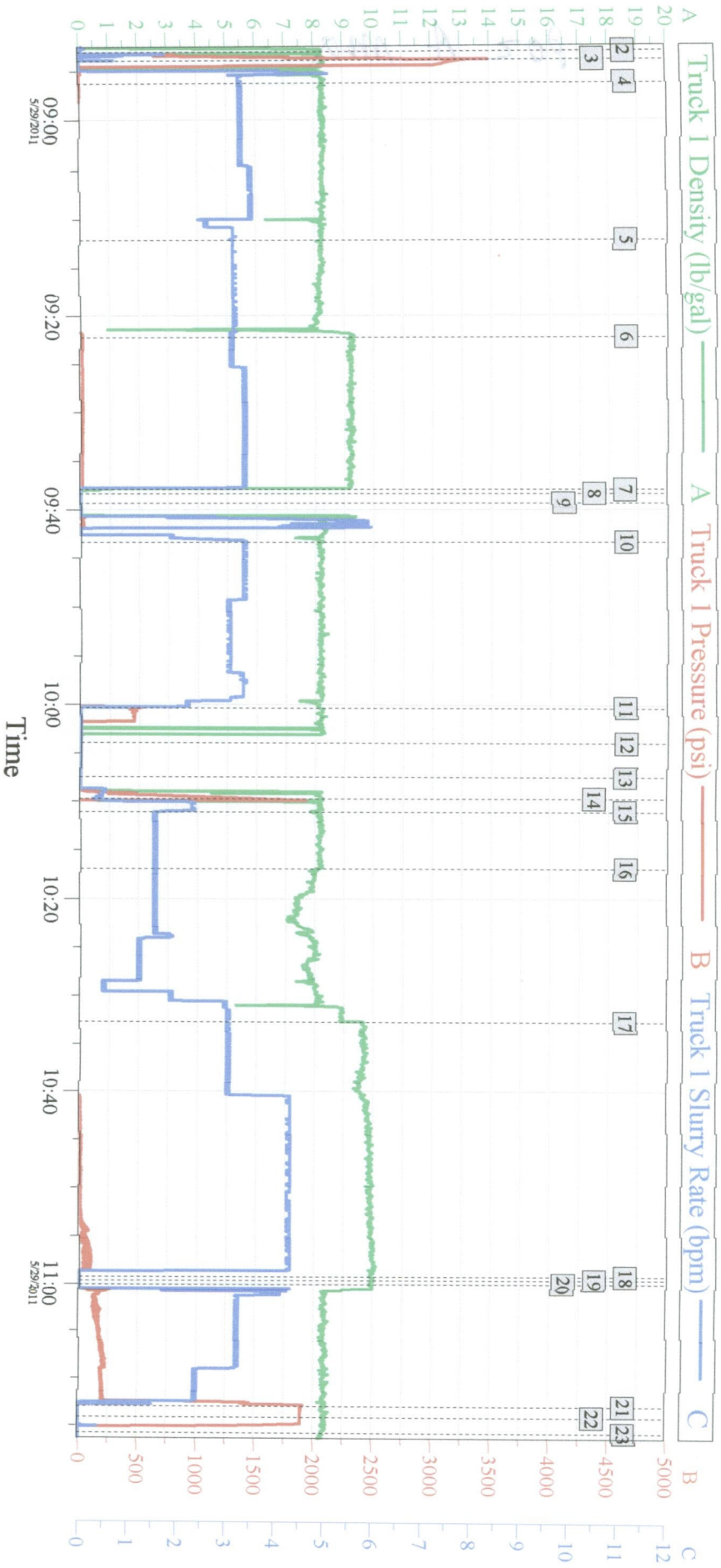
Quote # :

Sales Order # : 8202326

SUMMIT Version: 7.20.130

Sunday, May 29, 2011 11:39:00

XTO - Hill Ranch 02-08 5 1/2" Production Casing



Global Event Log

Intersection	TIP	TISR	Intersection	TIP	TISR	Intersection	TIP	TISR
2 Start Job	08:53:05	0.000	3 Test Lines	08:53:54	3456	4 Pump Fresh Water	08:56:13	-0.988
5 Pump Gelled Water	09:12:06	-7.909	6 Pump Cement	09:22:12	20.76	7 Shutdown	09:37:53	-20.76
8 Drop Shutoff Plug	09:38:18	-20.76	9 Clean Lines	09:39:16	-20.76	10 Pump Displacement	09:43:18	-13.77
11 Bump Plug	10:00:18	502.7	12 Check Floats	10:03:56	-16.55	13 Drop Bomb	10:07:30	-0.989
14 Open MSC	10:09:41	1406	15 Pump Fresh Water	10:11:03	-7.909	16 Pump Gelled Water	10:16:54	-12.85
17 Pump Cement	10:32:38	-6.921	18 Shutdown	10:59:17	-40.53	19 Drop Top Plug	10:59:38	-39.55
20 Pump Displacement	11:00:03	-38.56	21 Bump Plug	11:13:00	1898	22 Close Multiple Stage Cementer	11:14:09	1894
23 Release Pressure	11:15:47	-29.66						

Customer:
Well Description:

Job Date: 29-May-2011
UWI:

Sales Order #: 8202326