

## The Road to Excellence Starts with Safety

Sold To #: 353810	Ship To #: 2855647	Quote #:	Sales Order #: 8193863
Customer: XTO ENERGY INC EBUSINESS	Customer Rep: Coffee, Ron		
Well Name: Hill Ranch	Well #: 02-08	API/UWI #: 05-071-09850	
Field:	City (SAP): TRINIDAD	County/Parish: Las Animas	State: Colorado
Contractor: Pense Drilling	Rig/Platform Name/Num: 19		
Job Purpose: Cement Conductor Casing			
Well Type: Development Well	Job Type: Cement Conductor Casing		
Sales Person: THEIS, MATTHEW	Srv Supervisor: WHEELER, JUSTIN	MBU ID Emp #: 196470	

## Job Personnel

HES Emp Name	Exp Hrs	Emp #	HES Emp Name	Exp Hrs	Emp #	HES Emp Name	Exp Hrs	Emp #
CHAVEZ, JEROME Christophe		458298	PAUMEN, CORD Anthony		453759	WHEELER, JUSTIN W		196470

## Equipment

HES Unit #	Distance-1 way	HES Unit #	Distance-1 way	HES Unit #	Distance-1 way	HES Unit #	Distance-1 way
10025030	42 mile	10824253C	42 mile	10948694	42 mile	11338223	42 mile

## Job Hours

Date	On Location Hours	Operating Hours	Date	On Location Hours	Operating Hours	Date	On Location Hours	Operating Hours
TOTAL								

Total is the sum of each column separately

## Job

Formation Name							Date	Time	Time Zone
Formation Depth (MD)	Top			Bottom		Called Out	26 - May - 2011	00:00	MST
Form Type				BHST		On Location	26 - May - 2011	12:30	MST
Job depth MD	43. ft		Job Depth TVD	43. ft		Job Started	26 - May - 2011	12:51	MST
Water Depth				Wk Ht Above Floor		Job Completed	26 - May - 2011	15:20	MST
Perforation Depth (MD)	From			To		Departed Loc	26 - May - 2011	16:00	MST

## Well Data

Description	New / Used	Max pressure psig	Size in	ID in	Weight lbm/ft	Thread	Grade	Top MD ft	Bottom MD ft	Top TVD ft	Bottom TVD ft
17 1/2" Openhole									43.		
13 3/8" Conductor Casing	Unknown		13.375	12.715	48.				43.		

## Tools and Accessories

Type	Size	Qty	Make	Depth	Type	Size	Qty	Make	Depth	Type	Size	Qty	Make
Guide Shoe					Packer					Top Plug			
Float Shoe					Bridge Plug					Bottom Plug			
Float Collar					Retainer					SSR plug set			
Insert Float										Plug Container			
Stage Tool										Centralizers			

## Miscellaneous Materials

Gelling Agt	Conc	Surfactant	Conc	Acid Type	Qty	Conc	%
Treatment Fld	Conc	Inhibitor	Conc	Sand Type	Size	Qty	

## Fluid Data

Stage/Plug #: 1	Fluid #	Stage Type	Fluid Name	Qty	Qty uom	Mixing Density lbm/gal	Yield ft3/sk	Mix Fluid Gal/sk	Rate bbl/min	Total Mix Fluid Gal/sk

Stage/Plug #: 1	Fluid #	Stage Type	Fluid Name	Qty	Qty uom	Mixing Density lbm/gal	Yield ft3/sk	Mix Fluid Gal/sk	Rate bbl/min	Total Mix Fluid Gal/sk



Stage/Plug #: 1									
1	FRESH WATER		30	bbl	8.33	.0	.0	.0	
2	Trinidad Surface Blend	TRINIDAD SURFACE BLEND - SBM (137081)	150	sacks	13.5	1.81	8.84	4.0	8.84
	0.125 lbm	POLY-E-FLAKE (101216940)							
	2 %	CAL-SEAL 60, 50 LB BAG (101217146)							
	2 %	ECONOLITE (100001580)							
	5 lbm	GILSONITE, 50 LB BAG (100001618)							
	0.2 %	VERSASET, 55 LB SK (101376573)							
	6 %	SALT, 100 LB BAG (100003652)							
	8.838 Gal	FRESH WATER							
3	DISPLACEMENT		5	bbl	8.33	.0	.0	.0	
Calculated Values			Pressures		Volumes				
Displacement	5	Shut In: Instant	10	Lost Returns	Yes	Cement Slurry	48.4	Pad	
Top Of Cement	Surface	5 Min		Cement Returns	7 bbls	Actual Displacement	5	Treatment	
Frac Gradient		15 Min		Spacers	50 bbls	Load and Breakdown		Total Job	
Rates									
Circulating		Mixing		Displacement		Avg. Job			
Cement Left In Pipe	Amount	0 ft	Reason	Shoe Joint					
Frac Ring # 1 @	ID	Frac ring # 2 @	ID	Frac Ring # 3 @	ID	Frac Ring # 4 @	ID		
The Information Stated Herein Is Correct				Customer Representative Signature					

*The Road to Excellence Starts with Safety*

Sold To #: 353810	Ship To #: 2855647	Quote #:	Sales Order #: 8193863
Customer: XTO ENERGY INC EBUSINESS		Customer Rep: Coffee, Ron	
Well Name: Hill Ranch		Well #: 02-08	API/UWI #: 05-071-09850
Field:	City (SAP): TRINIDAD	County/Parish: Las Animas	State: Colorado
Legal Description:			
Lat: N 0 deg. OR N 0 deg. 0 min. 0 secs.		Long: E 0 deg. OR E 0 deg. 0 min. 0 secs.	
Contractor: Pense Drilling		Rig/Platform Name/Num: 19	
Job Purpose: Cement Conductor Casing			Ticket Amount:
Well Type: Development Well		Job Type: Cement Conductor Casing	
Sales Person: THEIS, MATTHEW		Srv Supervisor: WHEELER, JUSTIN	MBU ID Emp #: 196470

Activity Description	Date/Time	Cht #	Rate bbl/ min	Volume bbl		Pressure psig		Comments
				Stage	Total	Tubing	Casing	
Depart from Service Center or Other Site	05/26/2011 12:00							
Arrive At Loc	05/26/2011 12:30							
Safety Meeting - Pre Rig-Up	05/26/2011 12:35							
Test Lines	05/26/2011 12:53							
Pump Spacer	05/26/2011 12:54		2	30			15.0	Pump Fresh Water
Shutdown	05/26/2011 13:04							Unable to Establish Circulation
Pump Spacer	05/26/2011 13:10		4	20			50.0	Mix LGC IV Gel Spacer w/ Polyflake, to help Establish Circulation
Pump Cement	05/26/2011 13:26		4	38.7			105.0	Mix and Pump 120 sks Cement @ 13.5 lb/gal
Cement Returns to Surface	05/26/2011 13:32							Cement to Surface, Stop Mixing Cement
Pump Displacement - Start	05/26/2011 13:33		5	0			130.0	Pump Fresh Water Displacement
Pump Displacement - End	05/26/2011 13:34		5	5			10.0	End Displacement, Shut-Down, Cement Fell Back approx. 10' in 2 minutes
Shut In Well	05/26/2011 13:35						.0	
Other	05/26/2011 13:36							Wait for Cement Fallback
Other	05/26/2011 14:54			9.7				Mix 30 sks Cement @ 13.5 lb/gal, Top Out Well
Safety Meeting - Pre Rig-Down	05/26/2011 15:45							

Sold To #: 353810

Ship To #: 2855647

Quote #:

Sales Order #:

8193863

SUMMIT Version: 7.20.130

Thursday, May 26, 2011 03:24:00

Activity Description	Date/Time	Cht #	Rate bbl/ min	Volume bbl		Pressure psig		Comments
				Stage	Total	Tubing	Casing	
Safety Meeting - Departing Location	05/26/2011 16:00							

Sold To # : 353810

Ship To # :2855647

Quote # :

Sales Order # :

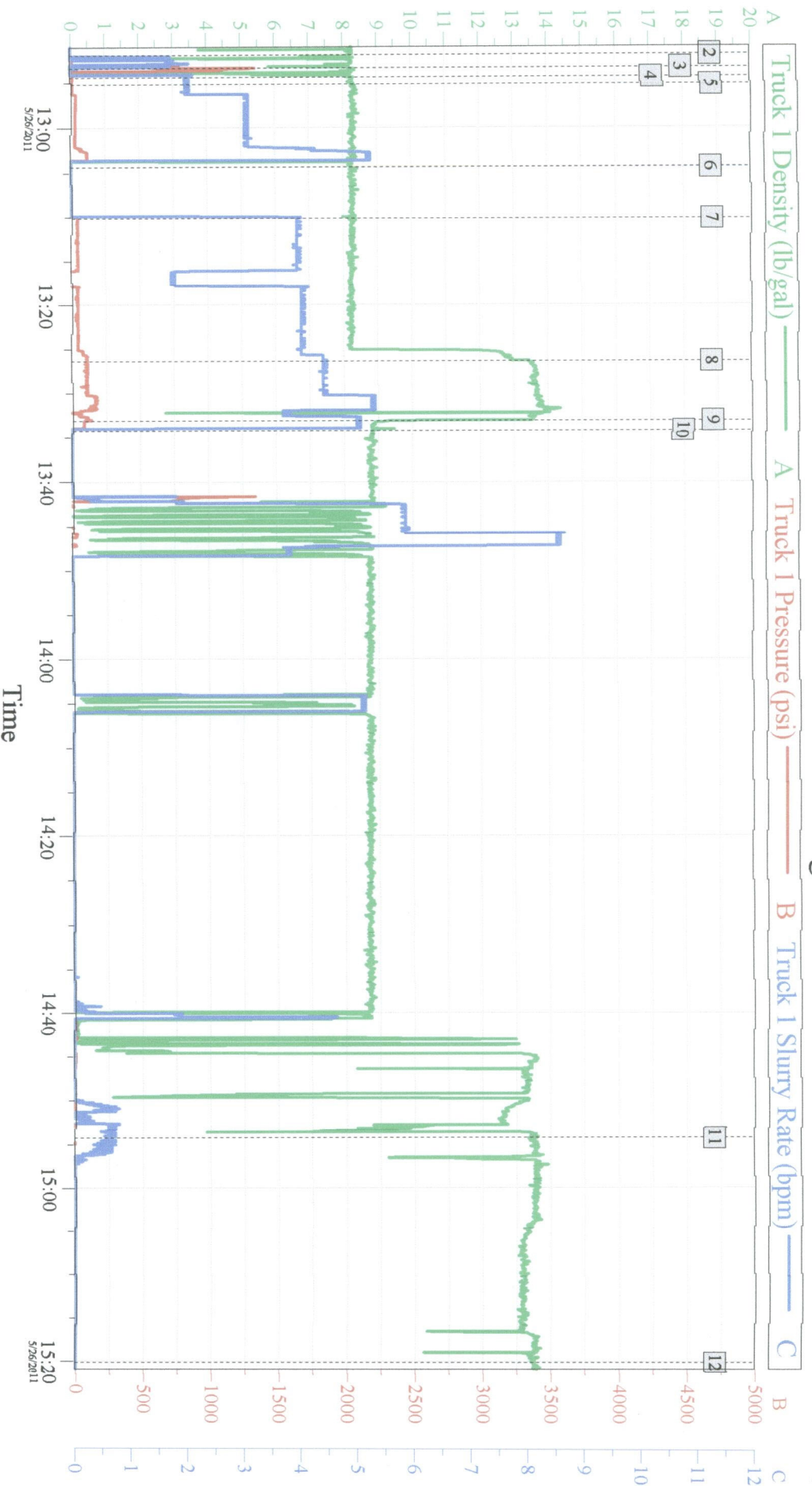
8193863

SUMMIT Version: 7.20.130

Thursday, May 26, 2011 03:24:00



# XTO - Hill Ranch 02-08 13 3/8" Conductor Casing



## Global Event Log

Intersection	TIP	TISR	Intersection	TIP	TISR	Intersection	TIP	TISR
2 Start Job	12:51:54	-12.85	3 Test Lines	12:53:18	610.2	4 Pump Fresh Water	12:54:21	14.76
5 Start Job	12:55:12	11.86	6 Shutdown	13:04:20	-12.22	7 Pump LCM Spacer	13:10:07	48.44
8 Pump Cement	13:26:18	105.0	9 Pump Displacement	13:33:03	132.5	10 Shut-In Well	13:34:11	-29.66
11 Top-Out Well	14:54:14	-2.540	12 End Job	13:20:05	-3.955			0.000

Customer: XTO  
Well Description: Hill Ranch 02-08

Job Date: 26-May-2011  
UWI:

Sales Order #: 8193863