

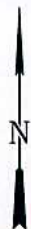
LEGEND

- EXISTING LOCATION
- EXISTING ROAD



Wasatch Surveying Associates

906 Main Street Evanston, Wyoming 82930
Phone No. (307) 789-4545 Fax 307-789-5722



EnCana Oil & Gas (USA) Inc.

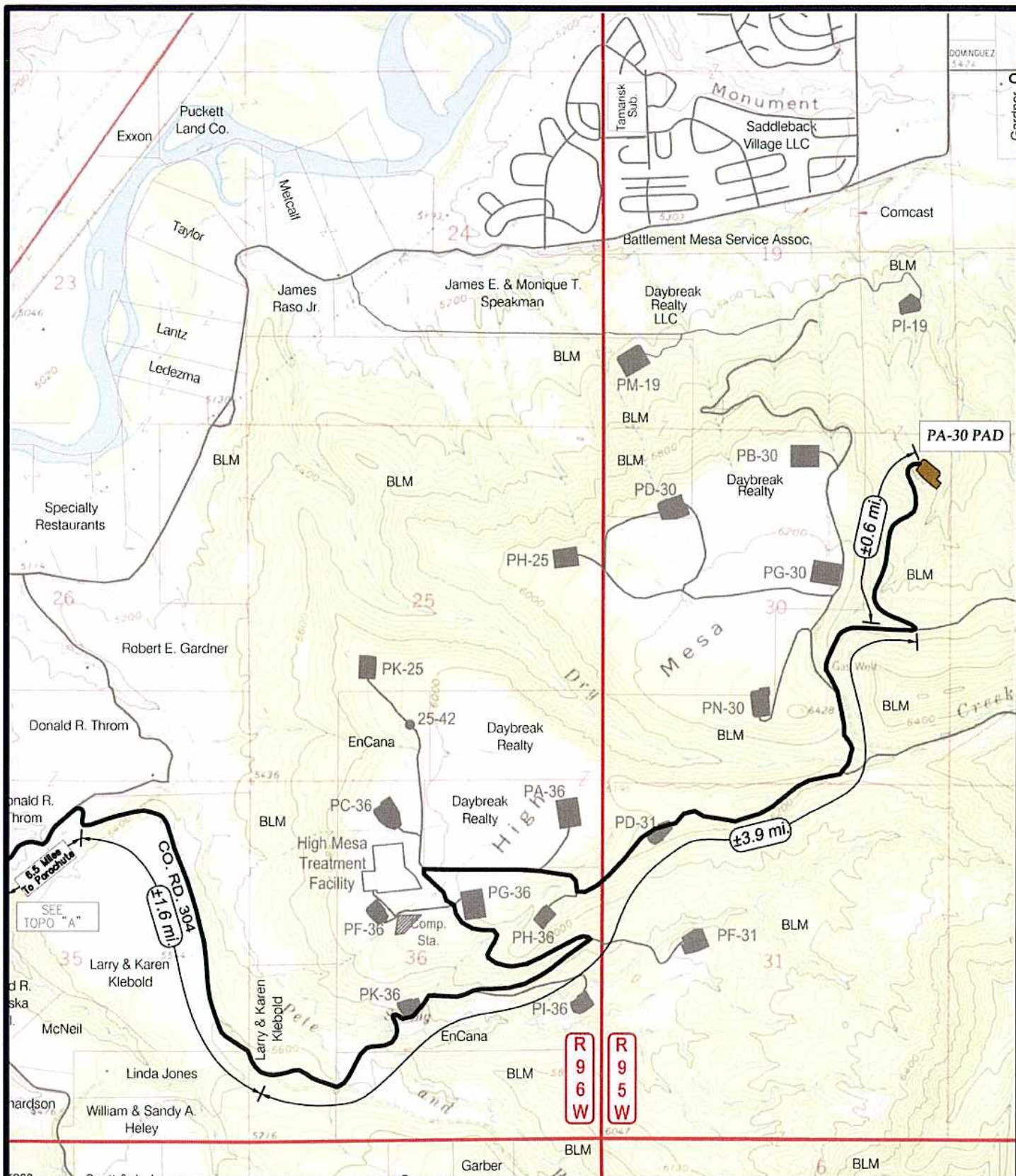
PA-30 PAD
SECTION 30, T7S, R95W, 6th, P.M.
GARFIELD COUNTY, COLORADO

TOPO A



PROJECT NUMBER
10-04-15
DATE: 4/7/10
SCALE: 1:100,000

8

of 10



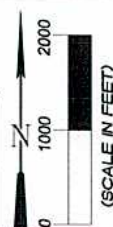
LEGEND

-  PA-30 WELL PAD
-  EXISTING ROAD



Wasatch Surveying Associates

906 Main Street Evanston, Wyoming 82930
Phone No. (307) 789-4545 Fax 307-789-5722



EnCana Oil & Gas (USA) Inc.

PA-30 Well Pad
SECTION 30, T7S, R95W, 6th, P.M.
GARFIELD COUNTY, COLORADO

TOPO B

PROJECT NUMBER
10-04-15
DATE: 4/6/10
SCALE: 1" = 2000'

9
of 10