

Rangely Weber Sand Unit

WALBRIDGE L.B. 4X

Current Wellbore

03/20/11

Well Details:	
STATE & CO	CO - Rio Blanco
TWNS & RNG	T1N & R102W
SECTION	(NWNE) 1
API	05-103-0873600
CHEVNO	AN8065

Casing Details:		P&A: LWAL4X - CS39
Type	Depth	
KB	5227	
GL	5212.5	
16 in. ? #/ft, ?	0 - 30', ? sxs cmt	
9.625 in. 36 #/ft, K-55	0 - 3027', 775 sxs cmt	
7 in. 23 #/ft, K-55	0 - 5288', sxs cmt	
7 in. 26 #/ft, K-55	5288 - 6456', 870 sxs cmt	
Perf Top	5915	
Perf Btm	6338	
PBTD:	6413	
TD:	6458	

Formation	Depth
Niobrara	
Frontier	3083
Frontier Snd	3172
Mowry	3359
Dakota	3450
Morrison	3540
Curtis	4123
Entrada	4243
Carmel	4410
Navajo	4466
Chinle	5036
Shinarump	5190
Moenkopi	5260
Weber	5902

COGCC Regulations: Set Isolation Packer
within 300' of perfs or 100' above liner

GOC_CALC	5556	FT	PAY
Weber 1a	5902	177	0
Weber 2	6079		
Weber 3a	6084	88	0
Weber 4	6172		
Weber 5a	6215	105	0
Weber 6	6320		
Weber 7a	6334	79	0
Weber 8	6424		
Weber 9a			0
Weber 10			
Weber 11a		0	0
		449	0
OWC_CALC	6376		

KB 5227
GL 5212.5
16 in. ? #/ft, ?
0 - 30', ? sxs cmt

9.625 in. 36 #/ft, K-55
0 - 3027', 775 sxs cmt

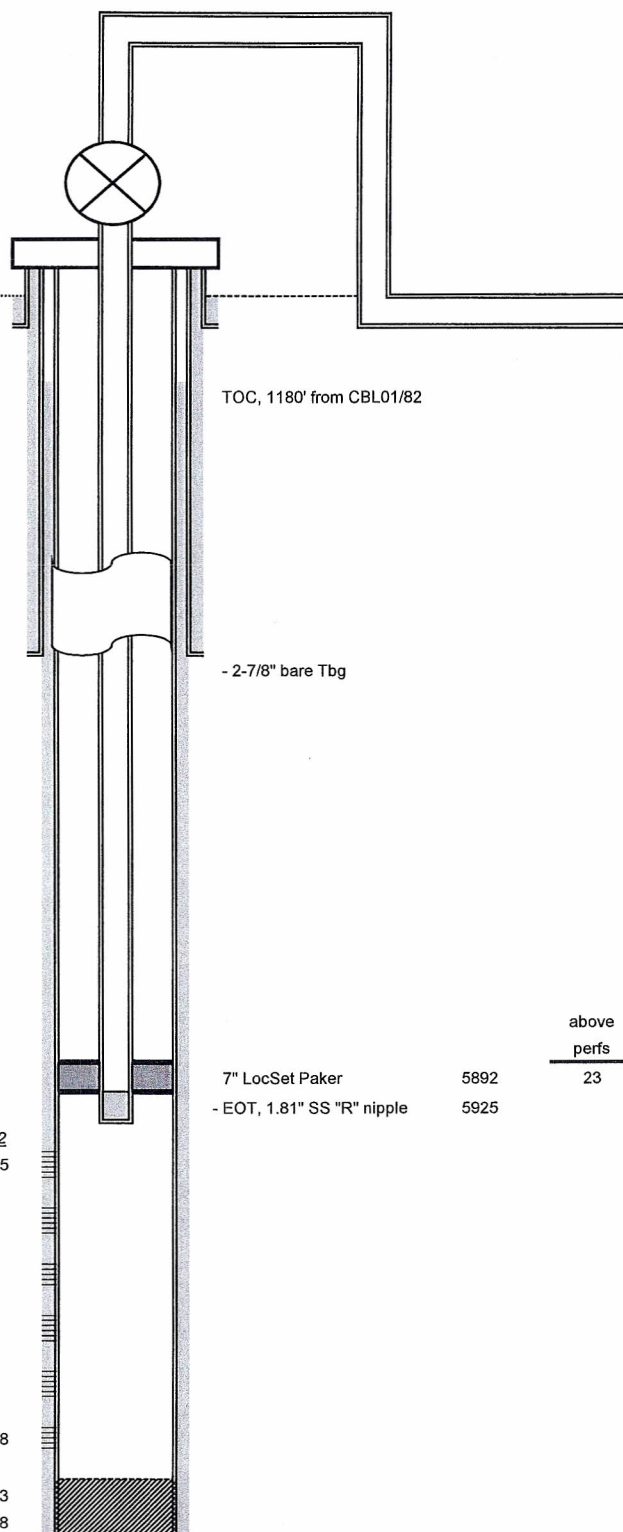
7 in. 23 #/ft, K-55
0 - 5288', sxs cmt

7 in. 26 #/ft, K-55
5288 - 6456', 870 sxs cmt

Weber 5902
Perf Top 5915

Perf Btm 6338

PBTD: 6413
TD: 6458



above
perfs
23

Notes:

- 09/08: PLS set 1.81" RZG plug at 5915' PLS Depth.
- 12/81: Set 7" casing at 6456', pump 870 sxs Expanding Cement, no returns to surface (CBL estimates TOA at 1180').
- 08/81: Set 9-5/8" surface casing to 3026.5', pump 475 sxs Econolite + 150 sxs G w/ 2% CaCl₂, returns to surface, RIH w/ 90' 1" pipe and pumped 75sxs top cement.