

---

# **OXY GRAND JUNCTION EBUSINESS**

---

**CC 697-08-31A  
PARACHUTE  
Garfield County , Colorado**

**Cement Surface Casing**  
**25-Dec-2010**

**Post Job Summary**

### The Road to Excellence Starts with Safety

Sold To #: 344034		Ship To #: 2827283		Quote #:		Sales Order #: 7814852	
Customer: OXY GRAND JUNCTION EBUSINESS				Customer Rep: BENAVIDES, VICTOR			
Well Name: CC			Well #: 697-08-31A			API/UWI #: 05-045*18352	
Field: PARACHUTE		City (SAP): PARACHUTE		County/Parish: Garfield		State: Colorado	
Lat: N 39.536 deg. OR N 39 deg. 32 min. 10.108 secs.				Long: W 108.238 deg. OR W -109 deg. 45 min. 44.593 secs.			
Contractor: H&P 330			Rig/Platform Name/Num: H&P 330				
Job Purpose: Cement Surface Casing							
Well Type: Development Well			Job Type: Cement Surface Casing				
Sales Person: DUNNING, DUSTIN			Srvs Supervisor: STILLSON, ERIC			MBU ID Emp #: 393789	

### Job Personnel

HES Emp Name	Exp Hrs	Emp #	HES Emp Name	Exp Hrs	Emp #	HES Emp Name	Exp Hrs	Emp #
SMITH, DUSTIN Michael	12	418015	STILLSON, ERIC W	12	393789	WINKER, STEVEN	12	478776
WYCKOFF, RYAN Scott	12	476117						

### Equipment

HES Unit #	Distance-1 way	HES Unit #	Distance-1 way	HES Unit #	Distance-1 way	HES Unit #	Distance-1 way
10025118	120 mile	10567589C	120 mile	10713212	120 mile	10741259	120 mile
10951246	120 mile	10995027	120 mile	11006314	120 mile		

### Job Hours

Date	On Location Hours	Operating Hours	Date	On Location Hours	Operating Hours	Date	On Location Hours	Operating Hours
12-25-10	12	5						

<b>TOTAL</b>	Total is the sum of each column separately							
--------------	--	--	--	--	--	--	--	--

### Job

Formation Name	Top	Bottom	Called Out	Date	Time	Time Zone
Formation Depth (MD)			On Location	25 - Dec - 2010	11:00	MST
Form Type		BHST	Job Started	25 - Dec - 2010	13:28	MST
Job depth MD	2712. ft	Job Depth TVD	2712. ft	Job Completed	25 - Dec - 2010	21:11
Water Depth		Wk Ht Above Floor		Departed Loc	25 - Dec - 2010	23:30
Perforation Depth (MD)	From	To				MST

### Well Data

Description	New / Used	Max pressure psig	Size in	ID in	Weight lbm/ft	Thread	Grade	Top MD ft	Bottom MD ft	Top TVD ft	Bottom TVD ft
OPEN HOLE SECTION				14.75				.	2730.		
SURFACE CASING	Unknown		9.625	8.921	36.			.	2712.		

### Sales/Rental/3<sup>rd</sup> Party (HES)

Description	Qty	Qty uom	Depth	Supplier
PLUG,CMTG,TOP,9 5/8,HWE,8.16 MIN/9.06 MA	1	EA		
R/A DENSOMETER W/CHART RECORDER,/JOB,ZI	1	JOB		
PORT. DATA ACQUIS. W/OPTICEM RT W/HES	1	EA		
ADC (AUTO DENSITY CTRL) SYS, /JOB,ZI	1	JOB		

### Tools and Accessories

Type	Size	Qty	Make	Depth	Type	Size	Qty	Make	Depth	Type	Size	Qty	Make
Guide Shoe					Packer					Top Plug	9.625	1	
Float Shoe					Bridge Plug					Bottom Plug			
Float Collar					Retainer					SSR plug set			
Insert Float										Plug Container	9.625	1	
Stage Tool										Centralizers			

Miscellaneous Materials													
Gelling Agt		Conc		Surfactant		Conc		Acid Type		Qty		Conc	%
Treatment Fld		Conc		Inhibitor		Conc		Sand Type		Size		Qty	
Fluid Data													
Stage/Plug #: 1													
Fluid #	Stage Type	Fluid Name			Qty	Qty uom	Mixing Density lbm/gal	Yield ft3/sk	Mix Fluid Gal/sk	Rate bbl/min	Total Mix Fluid Gal/sk		
1	Water Spacer				20.00	bbl	8.33	.0	.0	5			
2	GEL				20.00	bbl	8.4	.0	.0	5			
3	Water Spacer				20.00	bbl	8.33	.0	.0	5			
4	Lead Cement	VERSACEM (TM) SYSTEM (452010)			1075.0	sacks	12.3	2.33	12.62	7	12.62		
12.62 Gal		FRESH WATER											
5	Tail Cement	VERSACEM (TM) SYSTEM (452010)			160.0	sacks	12.8	2.07	10.67	7	10.67		
10.67 Gal		FRESH WATER											
6	Displacement				203.00	bbl	8.33	.0	.0	6.5			
7	Topout Cement	HALCEM (TM) SYSTEM (452986)			91.0	sacks	12.5	1.97	10.96		10.96		
10.96 Gal		FRESH WATER											
Calculated Values			Pressures			Volumes							
Displacement	205.5	Shut In: Instant				Lost Returns		Cement Slurry	537	Pad			
Top Of Cement	SURFACE	5 Min				Cement Returns	7	Actual Displacement	203	Treatment			
Frac Gradient		15 Min				Spacers	60	Load and Breakdown		Total Job			
Rates													
Circulating	RIG	Mixing		7		Displacement	6.5		Avg. Job		6.5		
Cement Left In Pipe	Amount	53.4 ft	Reason	Shoe Joint									
Frac Ring # 1 @	ID	Frac ring # 2 @	ID	Frac Ring # 3 @	ID	Frac Ring # 4 @	ID						
The Information Stated Herein Is Correct					Customer Representative Signature								

*The Road to Excellence Starts with Safety*

<b>Sold To #:</b> 344034	<b>Ship To #:</b> 2827283	<b>Quote #:</b>	<b>Sales Order #:</b> 7814852
<b>Customer:</b> OXY GRAND JUNCTION EBUSINESS		<b>Customer Rep:</b> BENAVIDES, VICTOR	
<b>Well Name:</b> CC	<b>Well #:</b> 697-08-31A	<b>API/UWI #:</b> 05-045*18352	
<b>Field:</b> PARACHUTE	<b>City (SAP):</b> PARACHUTE	<b>County/Parish:</b> Garfield	<b>State:</b> Colorado
<b>Legal Description:</b>			
<b>Lat:</b> N 39.536 deg. OR N 39 deg. 32 min. 10.108 secs.		<b>Long:</b> W 108.238 deg. OR W -109 deg. 45 min. 44.593 secs.	
<b>Contractor:</b> H&P 330		<b>Rig/Platform Name/Num:</b> H&P 330	
<b>Job Purpose:</b> Cement Surface Casing			<b>Ticket Amount:</b>
<b>Well Type:</b> Development Well		<b>Job Type:</b> Cement Surface Casing	
<b>Sales Person:</b> DUNNING, DUSTIN		<b>Srv Supervisor:</b> STILLSON, ERIC	<b>MBU ID Emp #:</b> 393789

Activity Description	Date/Time	Cht #	Rate bbl/min	Volume bbl		Pressure psig		Comments
				Stage	Total	Tubing	Casing	
Call Out	12/25/2010 02:30							9 5/8 SURFACE, OXY, H&P 330, CC 697- 08-31A.
Pre-Convoy Safety Meeting	12/25/2010 04:30							ENTIRE CREW, OBSERVE ALL SAFE DRIVING PROCEDURES
Arrive At Loc	12/25/2010 11:00							RIG RUNNING CASING.
Assessment Of Location Safety Meeting	12/25/2010 11:05							REVIEWED EMERGENCY PLAN, ASSESSED WORK AREA AND SPOTTED EQUIPMENT.
Pre-Rig Up Safety Meeting	12/25/2010 11:25							ENTIRE CREW, WALKED THROUGH RIG UP LOOKING FOR HAZARDS.
Rig-Up Equipment	12/25/2010 11:30							1 PICK UP, 1 HT400 PUMP TRUCK, 2 660 BULK CEMENT TRUCKS, 1 BULK CEMENT STORAGE BIN, 1 QUICK LATCH HEAD WITH PLUG.
Pre-Job Safety Meeting	12/25/2010 13:00							ENTIRE CREW, CO REP AND RIG CREW.
Start Job	12/25/2010 13:28							TD 2730 TP 2712 SJ 53.38 FC 2658.62 MW 9.1 PPG, 9 5/8 36# CASING IN 14 3/4 HOLE, PARASITE SET AT 2521.
Pump Water	12/25/2010 13:29		2	2			120.0	FILL LINES BEFORE TESTING

Activity Description	Date/Time	Cht #	Rate bbl/min	Volume bbl		Pressure psig		Comments
				Stage	Total	Tubing	Casing	
Pressure Test	12/25/2010 13:32		0.5	0.1			3550.0	HELD PRESSURE FOR 2 MIN, PRESSURE HELD, NO LEAKS.
Pump Spacer 1	12/25/2010 13:35		5	20			270.0	FRESH WATER, PREMIXED CEMENT TUB AND WEIGHED WITH SCALES.
Pump Spacer 2	12/25/2010 13:39		5	20			230.0	GEL SPACER, 20 BBLS WATER WITH 5 GAL LGC MIXED IN TANKS,
Pump Spacer 1	12/25/2010 13:43		3	20			120.0	FRESH WATER, HAD TO ADJUST RATES FROM 2 TO 4 BPM DUE TO CELLAR PUMP NOT KEEPING UP.
Pump Lead Cement	12/25/2010 13:51		7	446			350.0	1075 SKS VERSACEM, 12.3 PPG, 2.33 CUFT/SK, 12.62 GAL/SK, 7 BOXES TUFF FIBER MIXED IN DOWNHOLE SIDE ON THE FLY. HAD TO ADJUST RATES FROM 1 TO 7 BPM DUE TO CELLAR PUMP.
Pump Tail Cement	12/25/2010 15:28		7	59			370.0	160 SKS VERSACEM, 12.8 PPG, 2.07 CUFT/SK, 10.67 GAL/SK, SLOWED TO 5 BPM LAST 15 BBLS TO MAINTAIN DENSITY.
Shutdown	12/25/2010 15:38							LOST RETURNS AT 130 BBLS GONE ON LEAD CEMENT, THEN REGAINED FOR ABOUT 100 BBLS AT 340 BBLS GONE, NO RETURNS REST OF THE WAY.
Drop Top Plug	12/25/2010 15:39							VARIFIED PLUG LEFT CONTAINER.
Pump Displacement	12/25/2010 15:40		6.5	205.5			550.0	FRESH WATER
Slow Rate	12/25/2010 16:10		2	195			380.0	SLOWED RATE TO 2 BPM TO BUMP PLUG.

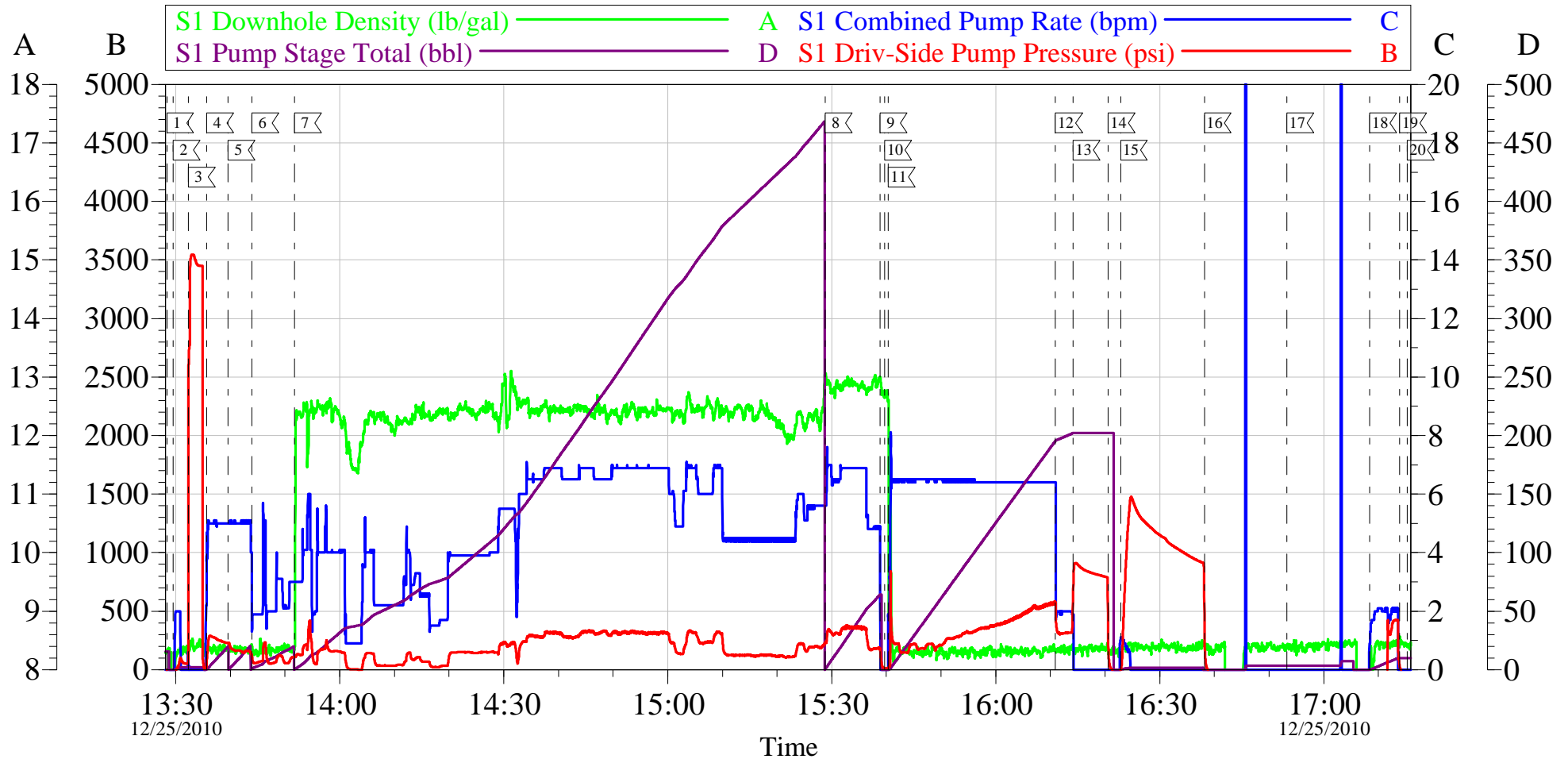
Activity Description	Date/Time	Cht #	Rate bbl/ min	Volume bbl		Pressure psig		Comments
				Stage	Total	Tubing	Casing	
Bump Plug	12/25/2010 16:14		2	203			920.0	PLUG LANDED AT 203 BBLS GONE AT 380 PSI, BUMPED UP TO 920 PSI AND HELD FOR 6 MIN PER CO REP.
Check Floats	12/25/2010 16:20							PRESSURE BLED DOWN TO 830 PSI WHEN RELEASED, FLOATS HELD, WHEN RELEASED PRESSURE GOT 1 BBL OF WATER BACK TO TRUCK.
Pressure Up	12/25/2010 16:22		1	1			1505. 0	PRESSURE UP TO TEST CASING.
Release Casing Pressure	12/25/2010 16:38							PRESSURE BLED DOWN TO 900 PSI WHEN RELEASED, RIG WILL TEST AGAIN WITH RIG PUMP TO MAKE SURE IT WAS NOT THE HT 400 BLEEDING PRESSURE. WE HAD A GOOD PRESSURE TEST AT THE START.
Safety Huddle	12/25/2010 16:45							RIG UP IRON TO CELLAR TO PUMP THROUGH PARASITE.
Pump Water	12/25/2010 17:08		2	10			470.0	10 BBLS WATER WITH 10 LBS SUAR PUMPED TO CLEAR PARASITE, CAUGHT PRESSURE AT 6.5 BBLS GONE.
Shutdown	12/25/2010 17:13							

Activity Description	Date/Time	Cht #	Rate bbl/min	Volume bbl		Pressure psig		Comments
				Stage	Total	Tubing	Casing	
Safety Huddle	12/25/2010 17:20							RIG UP TO TOPOUT. TOPOUT TRUCK WAS BROUGHT OVER FROM ANOTHER OXY RIG WITH APPROX. 165 SKS REMAINING FROM THE 350 SKS. THE TOPOUT WAS NOT CHARGED ON THAT TICKET (SO # 7840224) SO IT WILL BE ON THIS TICKET.
Pump Water	12/25/2010 20:42		2	2			30.0	PUMP WATER TO ENSURE LINES ARE CLEAR BEFORE MIXING CEMENT.
Pump Cement	12/25/2010 20:47		2	25			70.0	TOPOUT CEMENT, 12.5 PPG, 1.97 CUFT/SK, 10.96 GAL/SK.
Shutdown	12/25/2010 20:58							CEMENT TO SURFACE, WAIT 10 MINUTES TO SEE IF IT FALLS BACK.
Pump Cement	12/25/2010 21:06		2	7	32		70.0	TOPOUT CEMENT, 12.5 PPG, 1.97 CUFT/SK, 10.96 GAL/SK. 32 BBLS TOTAL, APPROX 91 SKS OF TOPOUT, THE REMAINING TOPOUT WILL STAY ON LOCATION.
Pump Water	12/25/2010 21:10		2	2			40.0	PUMP WATER TO CLEAR IRON OF CEMENT. 7 BBLS OF CEMENT TO SURFACE.
Shutdown	12/25/2010 21:11							USED 1 STICK OF 1" IRON TO TOPOUT, IT WAS CUT DOWN TO ABOUT 6 FEET AND WILL BE CHARGED ON TICKET.
End Job	12/25/2010 21:11							DID NOT RECIPROCATATE PIPE DURING JOB.

Activity Description	Date/Time	Cht #	Rate bbl/ min	Volume bbl		Pressure psig		Comments
				Stage	Total	Tubing	Casing	
Post-Job Safety Meeting (Pre Rig-Down)	12/25/2010 21:15							ENTIRE CREW
Rig-Down Equipment	12/25/2010 21:45							
Pre-Convoy Safety Meeting	12/25/2010 23:25							ENTIRE CREW, OBSERVE ALL SAFE DRIVING PROCEDURES
Crew Leave Location	12/25/2010 23:30							THANK YOU FOR USING HALLIBURTON, ERIC STILLSON AND CREW.

# OXY

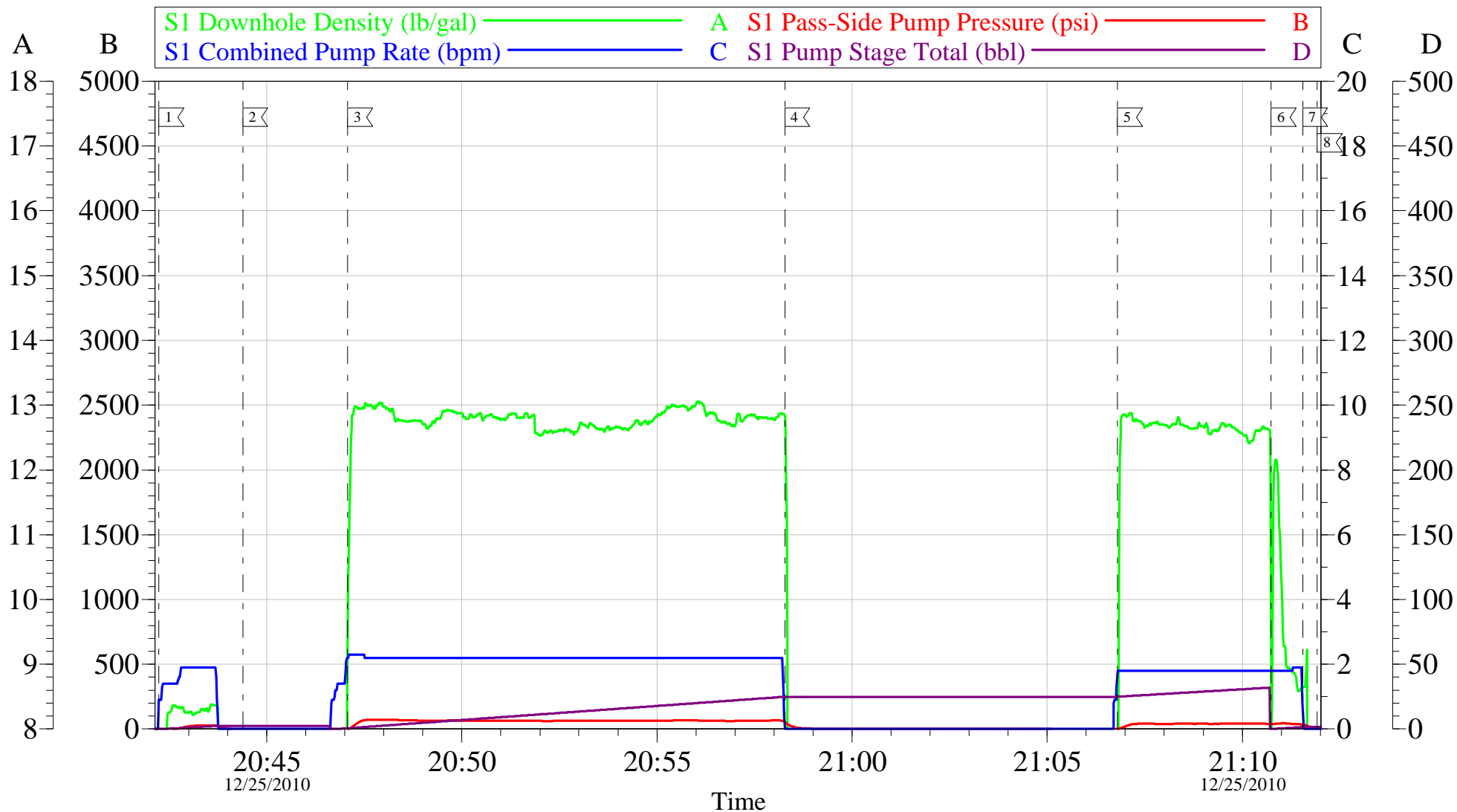
## 9 5/8 SURFACE



Customer: OXY	Job Date: 25-Dec-2010	Sales Order #: 7814852
Well Description: CC 697-08-31A	Job Type: SURFACE	ADC Used: YES
Company Rep: VICTOR BENAVIDES	Cement Supervisor: ERIC STILLSON	Elite #: 3 DUSTIN SMITH

# OXY

## TOPOUT 9 5/8 SURFACE



Local Event Log			
1	PUMP WATER/FILL LINES	20:42:14	2
2	MIX CEMENT	20:44:23	3
3	PUMP CEMENT	20:47:04	4
4	SHUTDOWN	20:58:17	5
5	PUMP CEMENT	21:06:48	6
6	PUMP WATER	21:10:44	7
7	SHUTDOWN	21:11:33	8
8	END JOB	21:11:55	

Customer: OXY	Job Date: 25-Dec-2010	Sales Order #: 7814852
Well Description: CC 697-08-31A	Job Type: SURFACE	ADC Used: YES
Company Rep: VICTOR BENAVIDES	Cement Supervisor: ERIC STILLSON	Elite #: 3 DUSTIN SMITH

OptiCem v6.4.2  
25-Dec-10 21:37