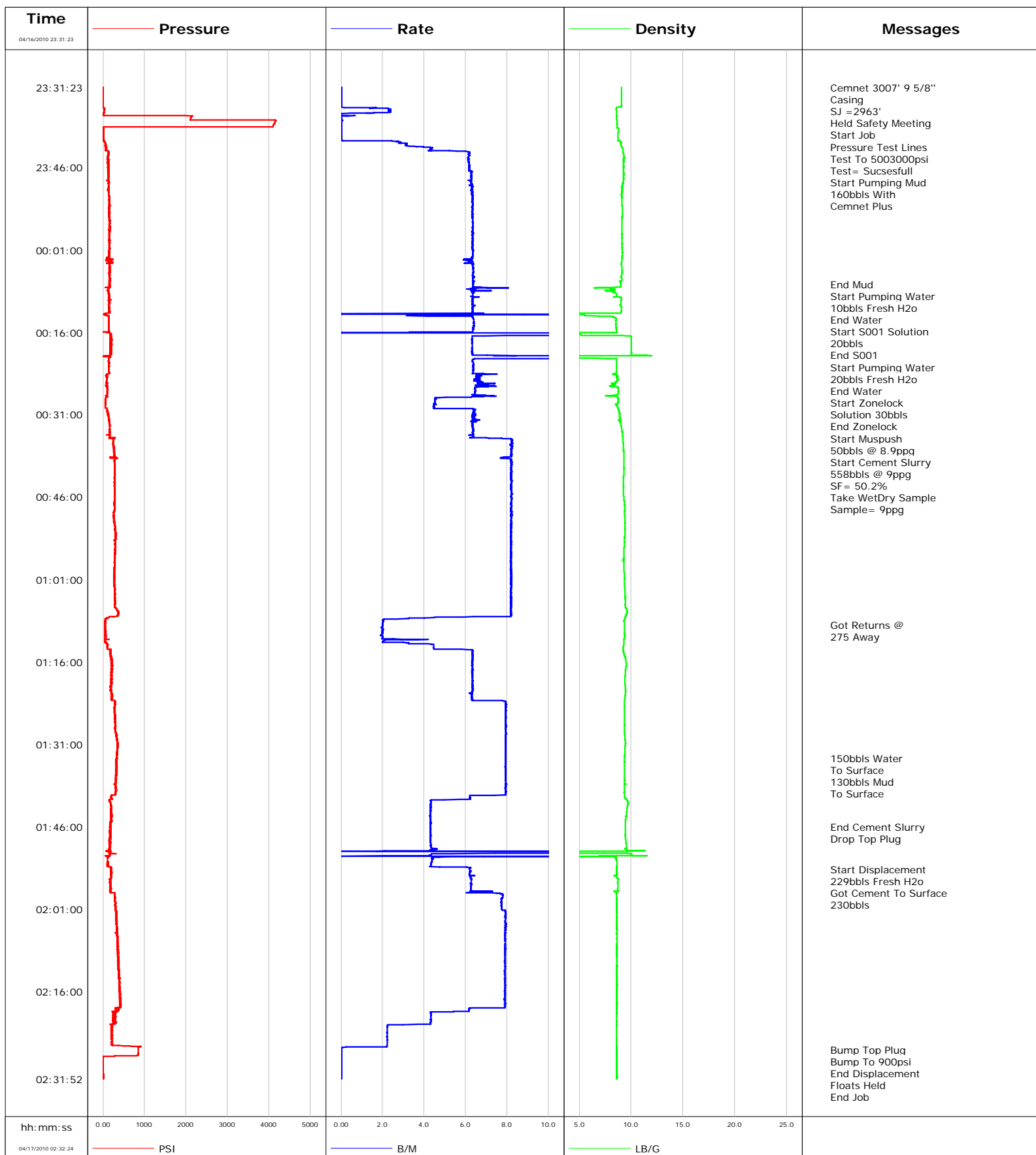


Well SGU8504C-25
Field N PARACUTE
Engineer
Country United States

Client ENCANA
SIR No. B2IJ-00143
Job Type 9 5/8 SURFACE
Job Date 04-16-2010





Cementing Service Report

				Customer ENCANA			Job Number B2IJ-00143								
Well SGU8504C-25			Location (legal) N PARACHUTE			Schlumberger Location GJCO		Job Start Apr/16/2010							
Field N PARACUTE		Formation Name/Type		Deviation		Bit Size 14.8 in		Well MD		Well TVD					
County GARFIELD		State/Province Colorado		BHP		BHST		BHCT		Pore Press. Gradient					
Well Master 0631175270		API/UWI													
Rig Name PATTERSON 306		Drilled For Gas		Service Via Land		Casing/Liner									
						Depth, ft		Size, in		Weight, lb/ft		Grade		Thread	
Offshore Zone		Well Class New		Well Type Development		3007.0		9.630		36.0					
						0.0		0.000		0.0					
Drilling Fluid Type		Max. Density		Plastic Viscosity		Tubing/Drill Pipe									
						Depth,		Size,		Weight,		Grade		Thread	
Service Line Cementing		Job Type 9 5/8 SURFACE													
Max. Allowed Tub. Press		Max. Allowed Ann. Press		WH Connection Single Cement head		Perforations/Open Hole									
						Top,		Bottom,				No. of Shots		Total Interval	
Service Instructions														Diameter	
Treat Down Casing				Displacement 229.0 bbl		Packer Type				Packer Depth					
Tubing Vol.				Casing Vol. 232.0 bbl		Annular Vol. 365.0 bbl		Openhole Vol. 597.0 bbl							
Casing/Tubing Secured <input checked="" type="checkbox"/>		1 Hole Vol. Circulated prior to Cement <input type="checkbox"/>		Casing Tools				Squeeze Job							
Lift Pressure 1488 psi		Shoe Type Guide		Squeeze Type											
Pipe Rotated <input type="checkbox"/>		Pipe Reciprocated <input type="checkbox"/>		Shoe Depth 3007.0 ft		Tool Type									
No. Centralizers		Top Plugs 1		Bottom Plugs		Stage Tool Type		Tool Depth							
Cement Head Type Single		Stage Tool Depth		Tail Pipe Size											
Job Scheduled For Apr/16/2010		Arrived on Location Apr/16/2010		Leave Location Apr/16/2010		Collar Type Diff-Fill		Tail Pipe Depth							
						Collar Depth 2963.0 ft		Sqz. Total Vol.							
Date	Time 24-hr clock	Treating Pressure PSI	Flow Rate B/M	Density LB/G	Volume BBL	Message									
04/16/2010	23:14:17					Started Acquisition									
04/16/2010	23:31:23	-4	0.0	9.05	0.0										
04/16/2010	23:31:24					Cemnet 3007' 9 5/8"									
04/16/2010	23:31:24					Casing									
04/16/2010	23:31:24					SJ =2963'									
04/16/2010	23:31:24					Held Safety Meeting									
04/16/2010	23:31:24	-4	0.0	9.05	0.0										
04/16/2010	23:31:27					Start Job									
04/16/2010	23:31:27	-5	0.0	9.05	0.0										
04/16/2010	23:31:30					Pressure Test Lines									
04/16/2010	23:31:30	-4	0.0	9.05	0.0										
04/16/2010	23:31:31					Test To 5003000psi									
04/16/2010	23:31:31					Test= Sucsesfull									
04/16/2010	23:31:31	-4	0.0	9.05	0.0										
04/16/2010	23:31:47	-4	0.0	9.06	0.0										
04/16/2010	23:32:17	-5	0.0	9.05	0.0										
04/16/2010	23:32:47	-5	0.0	9.05	0.0										
04/16/2010	23:33:17	-5	0.0	9.05	0.0										
04/16/2010	23:33:47	-4	0.0	9.06	0.0										
04/16/2010	23:34:17	-7	0.0	9.06	0.0										
04/16/2010	23:34:47	-8	0.0	9.05	0.0										

Well			Field		Job Start		Customer		Job Number	
SGU8504C-25			N PARACUTE		Apr/16/2010		ENCANA		B2IJ-00143	
Date	Time 24-hr clock	Treating Pressure PSI	Flow Rate B/M	Density LB/G	Volume BBL	Message				
04/16/2010	23:35:47	26	2.4	8.59	1.5					
04/16/2010	23:36:17	4	0.0	8.59	2.2					
04/16/2010	23:36:47	2128	0.0	8.62	2.3					
04/16/2010	23:37:17	2107	0.0	8.62	2.3					
04/16/2010	23:37:47	4143	0.0	8.63	2.3					
04/16/2010	23:38:17	4107	0.0	8.63	2.3					
04/16/2010	23:38:47	-1	0.0	8.69	2.3					
04/16/2010	23:39:17	4	0.0	8.77	2.3					
04/16/2010	23:39:47	3	0.0	8.76	2.3					
04/16/2010	23:40:17	3	0.0	8.74	2.3					
04/16/2010	23:40:47	3	0.0	8.75	2.3					
04/16/2010	23:41:17	40	2.7	9.00	2.6					
04/16/2010	23:41:47	60	3.2	9.01	4.1					
04/16/2010	23:42:13					Start Pumping Mud				
04/16/2010	23:42:13	63	3.7	9.08	5.5					
04/16/2010	23:42:15					160bbls With				
04/16/2010	23:42:15					Cemnet Plus				
04/16/2010	23:42:15	77	4.0	9.09	5.6					
04/16/2010	23:42:17	71	4.1	9.10	5.8					
04/16/2010	23:42:47	72	4.3	9.21	7.9					
04/16/2010	23:43:17	132	6.2	9.21	10.6					
04/16/2010	23:43:47	129	6.2	9.30	13.7					
04/16/2010	23:44:17	128	6.1	9.33	16.8					
04/16/2010	23:44:47	131	6.2	9.28	19.9					
04/16/2010	23:45:17	121	6.1	9.27	22.9					
04/16/2010	23:45:47	139	6.2	9.28	26.0					
04/16/2010	23:46:17	130	6.2	9.27	29.1					
04/16/2010	23:46:47	134	6.3	9.28	32.2					
04/16/2010	23:47:17	131	6.3	9.28	35.3					
04/16/2010	23:47:47	135	6.3	9.28	38.5					
04/16/2010	23:48:17	134	6.3	9.27	41.6					
04/16/2010	23:48:47	134	6.2	9.26	44.7					
04/16/2010	23:49:17	140	6.2	9.18	47.9					
04/16/2010	23:49:47	144	6.3	9.15	51.0					
04/16/2010	23:50:17	134	6.3	9.13	54.2					
04/16/2010	23:50:47	144	6.3	9.13	57.3					
04/16/2010	23:51:17	153	6.3	9.13	60.5					
04/16/2010	23:51:47	161	6.3	9.12	63.7					
04/16/2010	23:52:17	164	6.3	9.12	66.8					
04/16/2010	23:52:47	161	6.3	9.12	70.0					
04/16/2010	23:53:17	166	6.3	9.16	73.2					
04/16/2010	23:53:47	148	6.3	9.17	76.4					
04/16/2010	23:54:17	141	6.3	9.17	79.5					
04/16/2010	23:54:47	166	6.3	9.16	82.7					
04/16/2010	23:55:17	164	6.3	9.13	85.8					
04/16/2010	23:55:47	164	6.4	9.11	89.0					
04/16/2010	23:56:17	165	6.4	9.11	92.2					
04/16/2010	23:56:47	160	6.3	9.11	95.4					
04/16/2010	23:57:17	169	6.3	9.13	98.5					
04/16/2010	23:57:47	163	6.3	9.14	101.7					
04/16/2010	23:58:17	160	6.3	9.14	104.9					
04/16/2010	23:58:47	148	6.3	9.14	108.0					
04/16/2010	23:59:17	161	6.3	9.13	111.2					
04/16/2010	23:59:47	169	6.3	9.13	114.4					

Well			Field		Job Start		Customer		Job Number	
SGU8504C-25			N PARACUTE		Apr/16/2010		ENCANA		B2IJ-00143	
Date	Time 24-hr clock	Treating Pressure PSI	Flow Rate B/M	Density LB/G	Volume BBL	Message				
04/17/2010	00:00:47	159	6.3	9.13	120.7					
04/17/2010	00:01:17	141	6.3	9.15	123.9					
04/17/2010	00:01:47	142	6.4	9.15	127.1					
04/17/2010	00:02:17	149	6.3	9.13	130.3					
04/17/2010	00:02:47	130	5.9	9.11	133.4					
04/17/2010	00:03:17	143	6.3	9.09	136.5					
04/17/2010	00:03:47	154	6.3	9.08	139.6					
04/17/2010	00:04:17	159	6.4	9.10	142.8					
04/17/2010	00:04:47	154	6.4	9.12	145.9					
04/17/2010	00:05:17	141	6.3	9.14	149.1					
04/17/2010	00:05:47	154	6.4	9.07	152.3					
04/17/2010	00:06:17	155	6.4	9.10	155.5					
04/17/2010	00:06:47	154	6.4	8.97	158.7					
04/17/2010	00:07:12					End Mud				
04/17/2010	00:07:12	152	6.4	9.00	161.3					
04/17/2010	00:07:16					Start Pumping Water				
04/17/2010	00:07:16	162	6.4	9.01	161.7					
04/17/2010	00:07:17					10bbbls Fresh H2o				
04/17/2010	00:07:17	151	6.4	9.01	161.9					
04/17/2010	00:07:47	175	6.5	8.94	165.0					
04/17/2010	00:08:17	131	6.3	8.43	168.3					
04/17/2010	00:08:47	136	6.3	8.45	171.6					
04/17/2010	00:09:17	156	6.3	8.57	174.7					
04/17/2010	00:09:32					End Water				
04/17/2010	00:09:32	133	6.6	8.37	176.3					
04/17/2010	00:09:33					Start S001 Solution				
04/17/2010	00:09:33	134	6.6	8.31	176.4					
04/17/2010	00:09:34					20bbbls				
04/17/2010	00:09:34	134	6.7	8.61	176.5					
04/17/2010	00:09:47	142	6.3	9.05	177.9					
04/17/2010	00:10:17	163	6.3	9.05	181.1					
04/17/2010	00:10:47	154	6.3	9.04	184.3					
04/17/2010	00:11:17	146	6.4	9.04	187.4					
04/17/2010	00:11:47	145	6.3	9.05	190.6					
04/17/2010	00:12:17	145	6.3	9.04	193.8					
04/17/2010	00:12:39					End S001				
04/17/2010	00:12:39	55	0.0	0.48	195.7					
04/17/2010	00:12:47	35	8.9	4.86	196.9					
04/17/2010	00:12:50					Start Pumping Water				
04/17/2010	00:12:50	64	3.3	5.51	197.1					
04/17/2010	00:12:51					20bbbls Fresh H2o				
04/17/2010	00:12:51	71	3.2	5.51	197.2					
04/17/2010	00:13:17	140	6.4	8.35	199.3					
04/17/2010	00:13:47	142	6.4	8.54	202.5					
04/17/2010	00:14:17	139	6.4	8.57	205.7					
04/17/2010	00:14:47	144	6.4	8.57	208.9					
04/17/2010	00:15:11					End Water				
04/17/2010	00:15:11	143	6.3	8.57	211.4					
04/17/2010	00:15:17	152	6.4	8.57	212.1					
04/17/2010	00:15:47	141	6.3	8.57	215.3					
04/17/2010	00:15:57					Start Zonelock				
04/17/2010	00:15:57					Solution 30bbbls				
04/17/2010	00:15:57	-17	5.3	8.59	216.3					
04/17/2010	00:16:17	192	13.9	4.49	219.7					

Well			Field		Job Start	Customer	Job Number
SGU8504C-25			N PARACUTE		Apr/16/2010	ENCANA	B2IJ-00143
Date	Time 24-hr clock	Treating Pressure PSI	Flow Rate B/M	Density LB/G	Volume BBL	Message	
04/17/2010	00:17:17	207	6.3	10.01	227.6		
04/17/2010	00:17:47	185	6.3	10.01	230.8		
04/17/2010	00:18:17	181	6.3	10.02	233.9		
04/17/2010	00:18:47	176	6.3	10.02	237.1		
04/17/2010	00:19:17	176	6.3	10.02	240.2		
04/17/2010	00:19:47	184	6.3	10.02	243.4		
04/17/2010	00:20:17	46	25.0	1.28	247.3		
04/17/2010	00:20:47	154	9.6	8.28	259.5		
04/17/2010	00:21:12					End Zonelock	
04/17/2010	00:21:12	137	6.3	8.58	262.2		
04/17/2010	00:21:17	146	6.3	8.58	262.7		
04/17/2010	00:21:22					Start Muspush	
04/17/2010	00:21:22	139	6.3	8.59	263.3		
04/17/2010	00:21:43					50bbbls @ 8.9ppg	
04/17/2010	00:21:43	143	6.4	8.57	265.5		
04/17/2010	00:21:47	137	6.4	8.57	265.9		
04/17/2010	00:22:17	138	6.4	8.58	269.1		
04/17/2010	00:22:47	147	6.4	8.58	272.3		
04/17/2010	00:23:17	158	6.4	8.58	275.5		
04/17/2010	00:23:47	85	6.6	8.59	278.8		
04/17/2010	00:24:17	91	6.5	8.66	282.1		
04/17/2010	00:24:47	106	6.5	8.70	285.4		
04/17/2010	00:25:17	87	6.7	8.39	288.7		
04/17/2010	00:25:47	82	7.4	7.97	292.1		
04/17/2010	00:26:17	105	6.5	8.78	295.5		
04/17/2010	00:26:47	109	6.5	8.76	298.7		
04/17/2010	00:27:17	104	6.4	8.76	301.9		
04/17/2010	00:27:47	100	6.3	8.75	305.3		
04/17/2010	00:28:17	65	4.5	8.78	307.7		
04/17/2010	00:28:47	60	4.5	8.76	309.9		
04/17/2010	00:29:17	59	4.5	8.63	312.2		
04/17/2010	00:29:47	57	4.5	8.72	314.4		
04/17/2010	00:30:17	113	6.4	8.82	317.4		
04/17/2010	00:30:47	123	6.4	8.88	320.6		
04/17/2010	00:31:17	127	6.4	8.92	323.8		
04/17/2010	00:31:34					Start Cement Slurry	
04/17/2010	00:31:34	150	6.4	8.93	325.6		
04/17/2010	00:31:35					558bbbls @ 9ppg	
04/17/2010	00:31:35					SF= 50.2%	
04/17/2010	00:31:35	150	6.4	8.93	325.7		
04/17/2010	00:31:36					Take WetDry Sample	
04/17/2010	00:31:36					Sample= 9ppg	
04/17/2010	00:31:36	149	6.4	8.94	325.8		
04/17/2010	00:31:47	149	6.4	8.93	327.0		
04/17/2010	00:32:17	163	6.5	8.92	330.2		
04/17/2010	00:32:47	165	6.3	9.03	333.4		
04/17/2010	00:33:17	165	6.3	9.07	336.6		
04/17/2010	00:33:47	163	6.4	9.11	339.8		
04/17/2010	00:34:17	154	6.3	9.15	342.9		
04/17/2010	00:34:47	164	6.4	9.18	346.1		
04/17/2010	00:35:17	154	7.4	9.21	349.4		
04/17/2010	00:35:47	245	8.2	9.23	353.4		
04/17/2010	00:36:17	252	8.2	9.25	357.5		
04/17/2010	00:36:47	263	8.2	9.26	361.6		

Well			Field		Job Start	Customer	Job Number
SGU8504C-25			N PARACUTE		Apr/16/2010	ENCANA	B2IJ-00143
Date	Time 24-hr clock	Treating Pressure PSI	Flow Rate B/M	Density LB/G	Volume BBL	Message	
04/17/2010	00:37:47	259	8.2	9.29	369.9		
04/17/2010	00:38:17	270	8.2	9.29	374.0		
04/17/2010	00:38:47	251	7.7	9.30	378.0		
04/17/2010	00:39:17	271	8.2	9.31	382.0		
04/17/2010	00:39:47	287	8.2	9.31	386.1		
04/17/2010	00:40:17	281	8.2	9.32	390.2		
04/17/2010	00:40:47	275	8.2	9.31	394.3		
04/17/2010	00:41:17	294	8.2	9.31	398.4		
04/17/2010	00:41:47	296	8.2	9.29	402.5		
04/17/2010	00:42:17	289	8.2	9.28	406.6		
04/17/2010	00:42:47	288	8.2	9.27	410.7		
04/17/2010	00:43:17	292	8.2	9.26	414.8		
04/17/2010	00:43:47	286	8.2	9.26	419.0		
04/17/2010	00:44:17	284	8.2	9.26	423.1		
04/17/2010	00:44:47	286	8.2	9.26	427.2		
04/17/2010	00:45:17	280	8.2	9.27	431.3		
04/17/2010	00:45:47	292	8.2	9.29	435.4		
04/17/2010	00:46:17	284	8.2	9.31	439.5		
04/17/2010	00:46:47	280	8.2	9.34	443.6		
04/17/2010	00:47:17	272	8.2	9.36	447.7		
04/17/2010	00:47:47	288	8.2	9.38	451.8		
04/17/2010	00:48:17	286	8.2	9.39	455.9		
04/17/2010	00:48:47	267	8.2	9.38	460.0		
04/17/2010	00:49:17	260	8.2	9.38	464.1		
04/17/2010	00:49:47	273	8.2	9.38	468.2		
04/17/2010	00:50:17	272	8.2	9.39	472.3		
04/17/2010	00:50:47	286	8.2	9.41	476.4		
04/17/2010	00:51:17	288	8.2	9.41	480.5		
04/17/2010	00:51:47	295	8.2	9.41	484.6		
04/17/2010	00:52:17	306	8.2	9.40	488.7		
04/17/2010	00:52:47	320	8.2	9.38	492.8		
04/17/2010	00:53:17	305	8.2	9.37	496.9		
04/17/2010	00:53:47	304	8.2	9.37	501.0		
04/17/2010	00:54:17	293	8.2	9.35	505.1		
04/17/2010	00:54:47	290	8.2	9.34	509.2		
04/17/2010	00:55:17	290	8.2	9.33	513.3		
04/17/2010	00:55:47	294	8.2	9.32	517.4		
04/17/2010	00:56:17	295	8.2	9.31	521.5		
04/17/2010	00:56:47	288	8.2	9.29	525.6		
04/17/2010	00:57:17	284	8.2	9.29	529.7		
04/17/2010	00:57:47	286	8.2	9.29	533.7		
04/17/2010	00:58:17	282	8.2	9.30	537.8		
04/17/2010	00:58:47	276	8.2	9.32	541.9		
04/17/2010	00:59:17	280	8.2	9.32	546.0		
04/17/2010	00:59:47	274	8.2	9.33	550.1		
04/17/2010	01:00:17	270	8.2	9.34	554.2		
04/17/2010	01:00:47	272	8.2	9.35	558.3		
04/17/2010	01:01:17	274	8.2	9.36	562.4		
04/17/2010	01:01:47	278	8.2	9.36	566.5		
04/17/2010	01:02:17	283	8.2	9.38	570.6		
04/17/2010	01:02:47	298	8.2	9.40	574.7		
04/17/2010	01:03:17	290	8.2	9.42	578.8		
04/17/2010	01:03:47	281	8.2	9.43	582.9		
04/17/2010	01:04:17	300	8.1	9.43	587.0		

Well			Field		Job Start		Customer		Job Number	
SGU8504C-25			N PARACUTE		Apr/16/2010		ENCANA		B2IJ-00143	
Date	Time 24-hr clock	Treating Pressure PSI	Flow Rate B/M	Density LB/G	Volume BBL	Message				
04/17/2010	01:05:17	301	8.2	9.43	595.2					
04/17/2010	01:05:47	286	8.2	9.43	599.3					
04/17/2010	01:06:17	320	8.2	9.54	603.4					
04/17/2010	01:06:47	367	8.2	9.63	607.5					
04/17/2010	01:07:17	374	8.2	9.56	611.6					
04/17/2010	01:07:47	160	6.4	9.45	615.6					
04/17/2010	01:08:17	59	2.0	9.37	617.4					
04/17/2010	01:08:47	63	2.0	9.34	618.4					
04/17/2010	01:09:14					Got Returns @				
04/17/2010	01:09:14	49	2.0	9.35	619.3					
04/17/2010	01:09:17	45	2.0	9.35	619.4					
04/17/2010	01:09:31					275 Away				
04/17/2010	01:09:31	46	2.0	9.36	619.9					
04/17/2010	01:09:47	47	2.0	9.37	620.4					
04/17/2010	01:10:17	62	2.0	9.37	621.4					
04/17/2010	01:10:47	67	2.0	9.38	622.4					
04/17/2010	01:11:17	48	2.0	9.39	623.4					
04/17/2010	01:11:47	81	2.0	9.33	624.4					
04/17/2010	01:12:17	47	2.0	9.32	625.7					
04/17/2010	01:12:47	116	4.5	9.31	627.2					
04/17/2010	01:13:17	103	4.5	9.25	629.4					
04/17/2010	01:13:47	164	6.3	9.24	631.8					
04/17/2010	01:14:17	192	6.3	9.28	635.0					
04/17/2010	01:14:47	178	6.3	9.35	638.1					
04/17/2010	01:15:17	198	6.3	9.46	641.3					
04/17/2010	01:15:47	216	6.3	9.51	644.5					
04/17/2010	01:16:17	202	6.3	9.53	647.6					
04/17/2010	01:16:47	227	6.3	9.52	650.8					
04/17/2010	01:17:17	196	6.4	9.48	654.0					
04/17/2010	01:17:47	225	6.3	9.46	657.1					
04/17/2010	01:18:17	194	6.3	9.44	660.3					
04/17/2010	01:18:47	198	6.3	9.42	663.5					
04/17/2010	01:19:17	191	6.3	9.41	666.6					
04/17/2010	01:19:47	206	6.3	9.41	669.8					
04/17/2010	01:20:17	208	6.3	9.43	673.0					
04/17/2010	01:20:47	184	6.3	9.45	676.1					
04/17/2010	01:21:17	187	6.3	9.48	679.3					
04/17/2010	01:21:47	224	6.3	9.46	682.4					
04/17/2010	01:22:17	221	6.3	9.42	685.6					
04/17/2010	01:22:47	214	6.3	9.39	688.7					
04/17/2010	01:23:17	294	8.0	9.36	692.3					
04/17/2010	01:23:47	289	7.9	9.35	696.3					
04/17/2010	01:24:17	293	8.0	9.36	700.3					
04/17/2010	01:24:47	290	8.0	9.34	704.2					
04/17/2010	01:25:17	288	7.9	9.35	708.2					
04/17/2010	01:25:47	292	7.9	9.35	712.2					
04/17/2010	01:26:17	289	8.0	9.35	716.1					
04/17/2010	01:26:47	288	7.9	9.36	720.1					
04/17/2010	01:27:17	294	8.0	9.36	724.1					
04/17/2010	01:27:47	290	8.0	9.35	728.0					
04/17/2010	01:28:17	302	7.9	9.35	732.0					
04/17/2010	01:28:47	317	7.9	9.36	736.0					
04/17/2010	01:29:17	317	7.9	9.39	739.9					
04/17/2010	01:29:47	332	7.9	9.41	743.9					

Well			Field		Job Start		Customer		Job Number	
SGU8504C-25			N PARACUTE		Apr/16/2010		ENCANA		B2IJ-00143	
Date	Time 24-hr clock	Treating Pressure PSI	Flow Rate B/M	Density LB/G	Volume BBL	Message				
04/17/2010	01:30:47	356	7.9	9.43	751.8					
04/17/2010	01:31:17	365	7.9	9.43	755.8					
04/17/2010	01:31:47	342	7.9	9.42	759.8					
04/17/2010	01:32:17	338	7.9	9.40	763.7					
04/17/2010	01:32:47	348	7.9	9.39	767.7					
04/17/2010	01:33:17	339	7.9	9.38	771.7					
04/17/2010	01:33:30					150bbls Water				
04/17/2010	01:33:30					To Surface				
04/17/2010	01:33:30					130bbls Mud				
04/17/2010	01:33:30					To Surface				
04/17/2010	01:33:30	331	7.9	9.37	773.4					
04/17/2010	01:33:47	330	7.9	9.37	775.6					
04/17/2010	01:34:17	328	7.9	9.36	779.6					
04/17/2010	01:34:47	320	7.9	9.35	783.6					
04/17/2010	01:35:17	317	7.9	9.35	787.5					
04/17/2010	01:35:47	335	7.9	9.35	791.5					
04/17/2010	01:36:17	320	7.9	9.34	795.5					
04/17/2010	01:36:47	309	7.9	9.35	799.4					
04/17/2010	01:37:17	308	7.9	9.34	803.4					
04/17/2010	01:37:47	308	7.9	9.34	807.4					
04/17/2010	01:38:17	289	7.9	9.37	811.3					
04/17/2010	01:38:47	318	7.9	9.35	815.3					
04/17/2010	01:39:17	313	7.9	9.35	819.2					
04/17/2010	01:39:47	304	7.9	9.33	823.2					
04/17/2010	01:40:17	198	6.4	9.35	827.1					
04/17/2010	01:40:47	212	6.2	9.45	830.2					
04/17/2010	01:41:17	159	4.3	9.64	832.9					
04/17/2010	01:41:47	193	4.3	9.72	835.1					
04/17/2010	01:42:17	193	4.3	9.64	837.3					
04/17/2010	01:42:47	206	4.3	9.59	839.4					
04/17/2010	01:43:17	191	4.3	9.57	841.6					
04/17/2010	01:43:47	197	4.3	9.54	843.7					
04/17/2010	01:44:17	209	4.3	9.51	845.9					
04/17/2010	01:44:47	197	4.3	9.47	848.0					
04/17/2010	01:45:17	193	4.3	9.46	850.2					
04/17/2010	01:45:47	184	4.3	9.45	852.4					
04/17/2010	01:46:01					End Cement Slurry				
04/17/2010	01:46:01	179	4.3	9.45	853.4					
04/17/2010	01:46:12					Drop Top Plug				
04/17/2010	01:46:12	190	4.3	9.45	854.1					
04/17/2010	01:46:17	173	4.3	9.45	854.5					
04/17/2010	01:46:47	165	4.3	9.45	856.7					
04/17/2010	01:47:17	200	4.3	9.47	858.8					
04/17/2010	01:47:47	160	4.3	9.46	861.0					
04/17/2010	01:48:17	154	4.3	9.48	863.1					
04/17/2010	01:48:47	170	4.3	9.51	865.3					
04/17/2010	01:49:17	167	4.3	9.53	867.5					
04/17/2010	01:49:47	160	4.3	9.54	869.6					
04/17/2010	01:50:17	165	4.3	9.60	871.8					
04/17/2010	01:50:47	154	25.0	4.26	880.2					
04/17/2010	01:51:17	79	2.5	11.51	883.4					
04/17/2010	01:51:47	111	4.4	8.57	886.9					
04/17/2010	01:52:17	109	4.4	8.62	889.1					
04/17/2010	01:52:47	119	4.3	8.62	891.2					

Well			Field		Job Start		Customer		Job Number	
SGU8504C-25			N PARACUTE		Apr/16/2010		ENCANA		B2IJ-00143	
Date	Time 24-hr clock	Treating Pressure PSI	Flow Rate B/M	Density LB/G	Volume BBL	Message				
04/17/2010	01:53:44					Start Displacement				
04/17/2010	01:53:44	196	6.2	8.62	896.1					
04/17/2010	01:53:47					229bbls Fresh H2o				
04/17/2010	01:53:47	200	6.2	8.62	896.4					
04/17/2010	01:54:17	188	6.2	8.62	899.5					
04/17/2010	01:54:47	190	6.2	8.62	902.6					
04/17/2010	01:55:17	204	6.2	8.58	905.7					
04/17/2010	01:55:47	183	6.3	8.75	908.9					
04/17/2010	01:56:17	192	6.2	8.71	912.0					
04/17/2010	01:56:47	182	6.3	8.73	915.2					
04/17/2010	01:57:08					Got Cement To Surface				
04/17/2010	01:57:08	201	6.3	8.72	917.3					
04/17/2010	01:57:09					230bbls				
04/17/2010	01:57:09	201	6.3	8.72	917.5					
04/17/2010	01:57:17	190	6.3	8.71	918.3					
04/17/2010	01:57:47	187	6.4	8.41	921.5					
04/17/2010	01:58:17	283	7.8	8.59	925.0					
04/17/2010	01:58:47	292	7.8	8.62	928.8					
04/17/2010	01:59:17	290	7.7	8.62	932.7					
04/17/2010	01:59:47	310	7.7	8.62	936.6					
04/17/2010	02:00:17	292	7.7	8.62	940.5					
04/17/2010	02:00:47	295	7.7	8.62	944.3					
04/17/2010	02:01:17	329	7.9	8.62	948.2					
04/17/2010	02:01:47	326	8.0	8.62	952.2					
04/17/2010	02:02:17	320	7.9	8.62	956.1					
04/17/2010	02:02:47	330	7.9	8.62	960.1					
04/17/2010	02:03:17	318	7.9	8.62	964.1					
04/17/2010	02:03:47	329	7.9	8.62	968.0					
04/17/2010	02:04:17	340	7.9	8.62	972.0					
04/17/2010	02:04:47	328	7.9	8.62	975.9					
04/17/2010	02:05:17	290	7.9	8.62	979.9					
04/17/2010	02:05:47	333	7.9	8.62	983.9					
04/17/2010	02:06:17	341	7.9	8.62	987.8					
04/17/2010	02:06:47	355	7.9	8.62	991.8					
04/17/2010	02:07:17	349	7.9	8.62	995.7					
04/17/2010	02:07:47	356	7.9	8.62	999.7					
04/17/2010	02:08:17	351	7.9	8.62	1003.6					
04/17/2010	02:08:47	371	7.9	8.62	1007.6					
04/17/2010	02:09:17	374	7.9	8.62	1011.5					
04/17/2010	02:09:47	360	7.9	8.62	1015.5					
04/17/2010	02:10:17	381	7.9	8.62	1019.4					
04/17/2010	02:10:47	373	7.9	8.62	1023.4					
04/17/2010	02:11:17	369	7.9	8.62	1027.3					
04/17/2010	02:11:47	387	7.9	8.62	1031.3					
04/17/2010	02:12:17	385	7.9	8.62	1035.2					
04/17/2010	02:12:47	387	7.9	8.62	1039.2					
04/17/2010	02:13:17	394	7.9	8.62	1043.1					
04/17/2010	02:13:47	389	7.9	8.62	1047.1					
04/17/2010	02:14:17	395	7.9	8.62	1051.0					
04/17/2010	02:14:47	403	7.9	8.62	1055.0					
04/17/2010	02:15:17	400	7.9	8.62	1058.9					
04/17/2010	02:15:47	404	7.9	8.62	1062.9					
04/17/2010	02:16:17	402	7.9	8.62	1066.8					
04/17/2010	02:16:47	414	7.9	8.62	1070.8					

Well			Field		Job Start	Customer	Job Number
SGU8504C-25			N PARACUTE		Apr/16/2010	ENCANA	B2IJ-00143
Date	Time 24-hr clock	Treating Pressure PSI	Flow Rate B/M	Density LB/G	Volume BBL	Message	
04/17/2010	02:17:47	409	7.9	8.62	1078.7		
04/17/2010	02:18:17	420	7.9	8.62	1082.6		
04/17/2010	02:18:47	410	7.9	8.62	1086.6		
04/17/2010	02:19:17	321	6.2	8.62	1090.0		
04/17/2010	02:19:47	263	4.3	8.62	1092.8		
04/17/2010	02:20:17	231	4.3	8.62	1095.0		
04/17/2010	02:20:47	293	4.3	8.62	1097.1		
04/17/2010	02:21:17	231	4.3	8.62	1099.3		
04/17/2010	02:21:47	294	4.3	8.62	1101.5		
04/17/2010	02:22:17	201	2.2	8.62	1103.0		
04/17/2010	02:22:47	202	2.2	8.62	1104.1		
04/17/2010	02:23:17	221	2.2	8.62	1105.2		
04/17/2010	02:23:47	201	2.2	8.62	1106.3		
04/17/2010	02:24:17	221	2.2	8.62	1107.4		
04/17/2010	02:24:47	203	2.2	8.62	1108.5		
04/17/2010	02:25:17	225	2.2	8.62	1109.7		
04/17/2010	02:25:47	254	2.2	8.62	1110.8		
04/17/2010	02:26:17	847	0.0	8.62	1111.4		
04/17/2010	02:26:30					Bump Top Plug	
04/17/2010	02:26:30	851	0.0	8.62	1111.4		
04/17/2010	02:26:31					Bump To 900psi	
04/17/2010	02:26:31	852	0.0	8.62	1111.4		
04/17/2010	02:26:47	851	0.0	8.62	1111.4		
04/17/2010	02:27:15					End Displacement	
04/17/2010	02:27:15	849	0.0	8.62	1111.4		
04/17/2010	02:27:17					Floats Held	
04/17/2010	02:27:17	849	0.0	8.62	1111.4		
04/17/2010	02:27:47	44	0.0	8.62	1111.4		
04/17/2010	02:28:17	-3	0.0	8.62	1111.4		
04/17/2010	02:28:47	-2	0.0	8.62	1111.4		
04/17/2010	02:29:17	-1	0.0	8.62	1111.4		
04/17/2010	02:29:47	-1	0.0	8.62	1111.4		
04/17/2010	02:30:15					End Job	
04/17/2010	02:30:15	-1	0.0	8.62	1111.4		
04/17/2010	02:30:17	-1	0.0	8.62	1111.4		
04/17/2010	02:30:47	-0	0.0	8.62	1111.4		
04/17/2010	02:31:17	0	0.0	8.62	1111.4		

Post Job Summary

Average Pump Rates, bbl/min					Volume of Fluid Injected, bbl			
Slurry 6.7	N2	Mud 6.2	Maximum Rate 25.0	Total Slurry 1111.4	Mud 155.8	Spacer 325.6	N2	
Treating Pressure Summary, psi					Breakdown Fluid			
Maximum 4170	Final -1	Average 262	Bump Plug to 900	Breakdown	Type	Volume	Density	
Avg. N2 Percent		Designed Slurry Volume 558.0 bbl		Displacement 257.3 bbl	Mix Water Temp 74 degF	Cement Circulated to Surface? <input checked="" type="checkbox"/>	Volume 230.0 bbl	
						Washed Thru Perfs <input type="checkbox"/>	To	
Customer or Authorized Representative NORM MCCREARY			Schlumberger Supervisor JASON CRICK			Circulation Lost <input type="checkbox"/>	Job Completed <input checked="" type="checkbox"/>	
						-	-	



Service Order for i-District Job 348821

Customer Name: ENCANA USA - PARACHUTE FIELD OFC	Person Taking Call: Strickler, Nikole	Location: Grand Junction, CO WS	Order Date: 12/3/2009 12:00 AM	Job Number: 348821
Service Order Number: B2IJ-00143	Service Line: Cementing	Supervisor: Strickler, Nikole	Legal Location:	
Well Name and Number: SGU8504C-25 F25 496	Pad/Platform: F25	Field: Story Gulch	County: Rio Blanco	State/Prov: CO
Well Master Number: 0631175270	API/UWI:	Rig Name: PATTERSON 306	Well Age: New	Sales Engineer: Hudson, Matthew
Job Type: Cementing – 9 5/8" Surface Casing	Time Well Ready:	Deviation:	Hole Size:	Well MD: 3000 ft
Well TVD:	BHP:	BHST: 115 °F	BHCT: 95 °F	Treat Down: Casing
Packer Type:	Packer Depth:	Well Head Connection:	HHP on Location: 550 hhp	Max Allowed Pressure: 4000 psi
Max Allowed Ann Pressure: 1500 psi		Job Stage Number: Production casing 12 of 12	FTL Ticket/Quote Number : B2IJ-00143	
Expected on Location: 4/17/2010 12:00 AM	Ready to Pump:	Job Start Date: 4/17/2010 12:00 AM	Job End Date: 4/17/2010 12:00 PM	
Leave for Job: 4/17/2010 12:00:00 AM		Arrive from Job: 4/17/2010 12:00:00 PM		

Casing/Tubing						Service Instructions: Cement 9 5/8" Surface Casing @ 3000ft w/ 50% Excess 160 bbls CemNET + in mud 30 bbls ZONELOCK 50 bbls MUDPUSH @ 8.6 ppg 1108sks 9.0ppg LiteCRETE Drop plug on fly with 5 bbls 8.6 ppg MudPUSH II Displace w water Displace with water CemNET in all slurry
String Type	Depth	Size	Weight	Grade	Thread	
Perforations						
Top	Bottom	SPF	No of Shots	Formation Name		
Total Interval: 0			Diameter:			
Coiled Tubing						
Size	Thickness	Length	String ID	Reel ID		

Client Contact						
Name	Voice	Fax	Email	Title	Company	Notes
Norman McCreary	303-353-5354					
Notes: 9 5/8" head, bowl, plug 1000lbs of CemNET 1600lbs of CemNET + 600lbs of S001						

Directions:

Materials				
Name	Code	Description	Quantity	Density
8.6 MudPush		49bbls Water + 215lbs D182 + 775lbs D031	60.00 bbl	8.60 lb/gal
9.0 LiteCRETE		LiteCRETE Blend + 0.8%D079 + 0.8%D065 + 0.4%D013 + 0.2%D046 + 0.25pps D029	559.00 bbl	9.00 lb/gal
B290	B290	CemNET+	1,600.00 lb	
D095	D095	D095 Cement Additive	1,000.00 lb	
S001	S001	Calcium Chloride S1	600.00 lb	

Fluid Systems:

8.6 MudPush				
49bbbls Water + 215lbs D182 + 775lbs D031				
Sacks Of:			Total Blend/Cem:	
Sack Weight:			Dry Blend Code:	
Yield:			Final Fluid Density:	8.60 lb/gal
Mix Water:			Base Fluid Den:	8.32 lb/gal
Mix Fluid:			Volume:	60.00 bbl
Mix Water Den:			Base Fluid Vol:	59.00 bbl
Sacks Blend/Cem:			Acid Volume:	
Total Mix Water:			Acid Conc:	
Total Mix Fluid:			Load out Excess	
Code	Conc	Design	Total by design	Load out with excess
D031	15.500 lb/bbl	BWVSpacerV O	775.00 lb	775.00 lb
D182	4.300 lb/bbl	BWVSpacerV O	215.00 lb	215.00 lb

9.0 LiteCRETE				
LiteCRETE Blend + 0.8%D079 + 0.8%D065 + 0.4%D013 + 0.2%D046 + 0.25pps D029				
Sacks Of:	Cement		Total Blend/Cem:	110,903.00 lb
Sack Weight:	100.00 lb		Dry Blend Code:	
Yield:	2.83 ft3/sk		Final Fluid Density:	9.00 lb/gal
Mix Water:	10.62 gal/sk		Base Fluid Den:	
Mix Fluid:	10.62 gal/sk		Volume:	
Mix Water Den:	8.32 lb/gal		Base Fluid Vol:	
Sacks Blend/Cem:	1,109.03 sks		Acid Volume:	
Total Mix Water:	44.58 m3		Acid Conc:	
Total Mix Fluid:	44.58 m3		Load out Excess	
Code	Conc	Design	Total by design	Load out with excess
D124	53.000 lb/sk	WTSK	58,778.59 lb	58,778.59 lb
D907	37.000 lb/sk	WTSK	41,034.11 lb	41,034.11 lb
D154	10.000 lb/sk	WTSK	11,090.30 lb	11,090.30 lb

D079	0.800 lb/sk	WTSK	887.22 lb	887.22 lb
D065	0.800 lb/sk	WTSK	887.22 lb	887.22 lb
D013	0.400 lb/sk	WTSK	443.61 lb	443.61 lb
D046	0.200 lb/sk	WTSK	221.81 lb	221.81 lb
D029	0.250 lb/sk	WTSK	277.26 lb	277.26 lb

Resources				
Personnel	Equipment 1	Equipment 2	Assignment	Note
	2CSS015995		4/17/2010 6:00 AM - 4/18/2010 6:00 AM	AirSlide: 294 sks 9.0 LiteCrete/AR 4-14-10
	2CSS18226		4/17/2010 6:00 AM - 4/18/2010 6:00 AM	AirSlide: 298 sks 9.0 LiteCrete/AR 4-14-10
	2CSS29478		4/17/2010 6:00 AM - 4/18/2010 6:00 AM	AirSlide: 295 sks 9.0 LiteCrete/AR 4-14-10