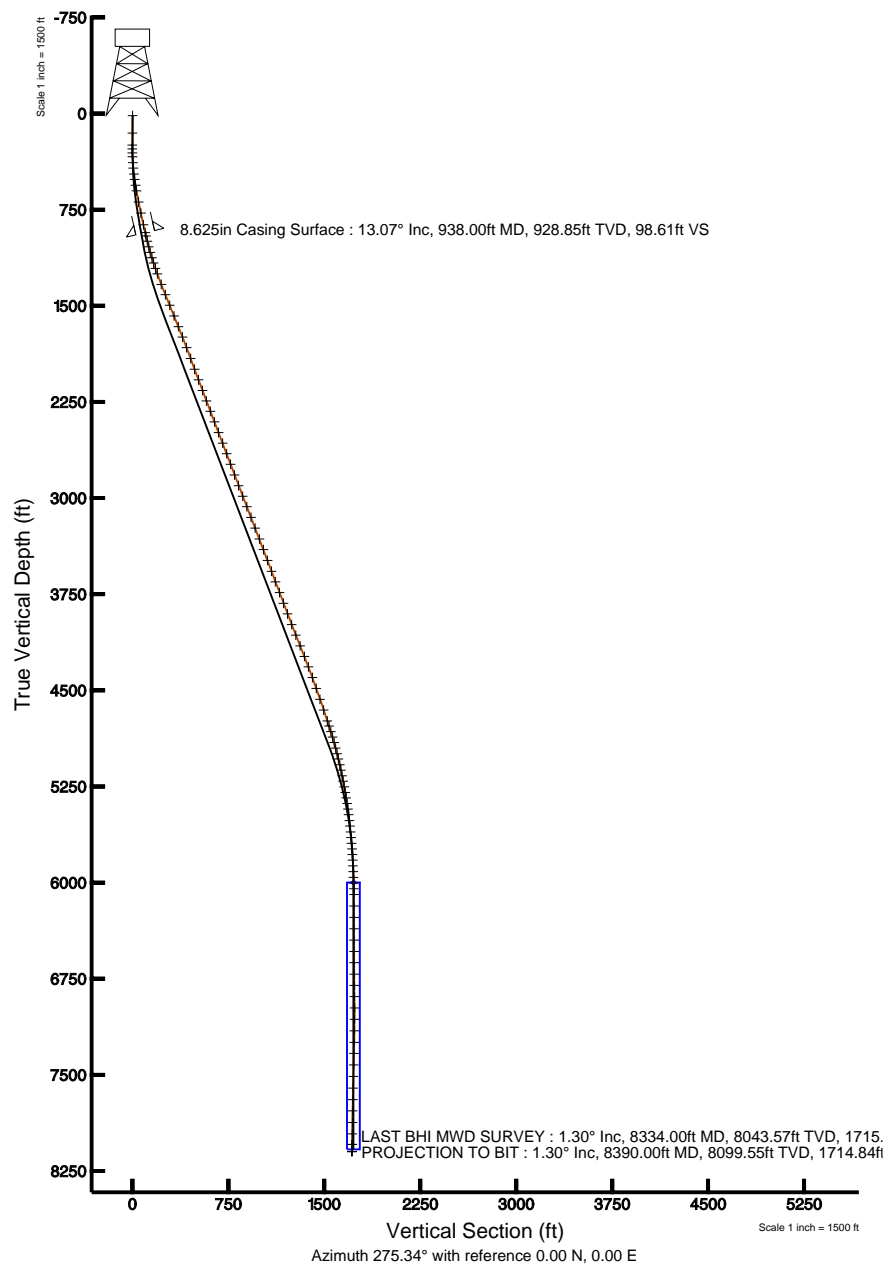
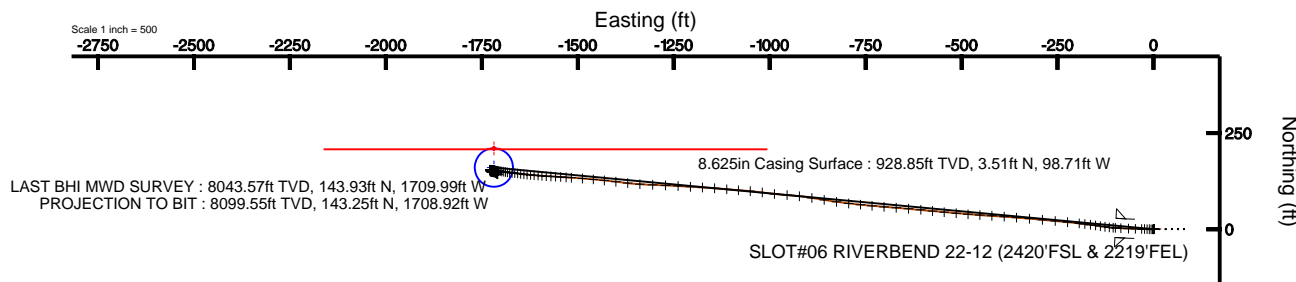


# KERR MCGEE OIL & GAS ONSHORE LP

Location: COLORADO Slot: SLOT#06 RIVERBEND 22-12 (2420'FSL & 2219'FEL)  
 Field: WELD COUNTY (KERR MCGEE) Well: RIVERBEND 22-12  
 Facility: SEC.12-T1N-R67W Wellbore: RIVERBEND 22-12 PWB



Plot reference wellpath is RIVERBEND 22-12 (REV-8.0) PWB	
True vertical depths are referenced to XTREME 15 (RKB)	Grid System: NAD83 / Lambert Colorado State Planes, Northern Zone (501), US feet
Measured depths are referenced to XTREME 15 (RKB)	North Reference: True north
XTREME 15 (RKB) to Mean Sea Level: 4928 feet	Scale: True distance
Mean Sea Level to Mud line (Facility: SEC.12-T1N-R67W): 0 feet	Depths are in feet
Coordinates are in feet referenced to Slot	Created by: cookdarn on 1/27/2011



BGGM (1945.0 to 2012.0) Dip: 66.80° Field: 53021.9 nT  
 Magnetic North is 8.91 degrees East of True North (at 12/6/2010)

To correct azimuth from Magnetic to True add 8.91 degrees  
 For example: if the Magnetic North Azimuth = 90 degs, then the Grid North Azimuth = 90 + 8.91 = 98.91



# Actual Wellpath Report

RIVERBEND 22-12 AWP

Page 1 of 6



INTEQ

## REFERENCE WELLPATH IDENTIFICATION

Operator	KERR MCGEE OIL & GAS ONSHORE LP	Slot	SLOT#06 RIVERBEND 22-12 (2420'FSL & 2219'FEL)
Area	COLORADO	Well	RIVERBEND 22-12
Field	WELD COUNTY (KERR MCGEE)	Wellbore	RIVERBEND 22-12 AWB
Facility	SEC.12-T1N-R67W		

## REPORT SETUP INFORMATION

Projection System	NAD83 / Lambert Colorado State Planes, Northern Zone (501), US feet	Software System	WellArchitect® 2.0
North Reference	True	User	Cookdanm
Scale	0.999962	Report Generated	1/27/2011 at 4:40:53 PM
Convergence at slot	0.43° East	Database/Source file	Denver Server/RIVERBEND_22-12_AWB.xml

## WELLPATH LOCATION

	Local coordinates		Grid coordinates		Geographic coordinates	
	North[ft]	East[ft]	Easting[USft]	Northing[USft]	Latitude	Longitude
Slot Location	0.00	-80.05	3185356.33	1267204.49	40°03'53.878"N	104°50'15.860"W
Facility Reference Pt			3185436.38	1267205.09	40°03'53.878"N	104°50'14.831"W
Field Reference Pt			3197771.84	1268891.29	40°04'09.600"N	104°47'36.000"W

## WELLPATH DATUM

Calculation method	Minimum curvature	XTREME 15 (RKB) to Facility Vertical Datum	4928.00ft
Horizontal Reference Pt	Slot	XTREME 15 (RKB) to Mean Sea Level	4928.00ft
Vertical Reference Pt	XTREME 15 (RKB)	Facility Vertical Datum to Mud Line (Facility)	0.00ft
MD Reference Pt	XTREME 15 (RKB)	Section Origin	N 0.00, E 0.00 ft
Field Vertical Reference	Mean Sea Level	Section Azimuth	275.34°



# Actual Wellpath Report

RIVERBEND 22-12 AWP

Page 2 of 6



INTEQ

## REFERENCE WELLPATH IDENTIFICATION

Operator	KERR MCGEE OIL & GAS ONSHORE LP	Slot	SLOT#06 RIVERBEND 22-12 (2420'FSL & 2219'FEL)
Area	COLORADO	Well	RIVERBEND 22-12
Field	WELD COUNTY (KERR MCGEE)	Wellbore	RIVERBEND 22-12 AWB
Facility	SEC.12-T1N-R67W		

## WELLPATH DATA (120 stations) † = interpolated/extrapolated station

MD [ft]	Inclination [°]	Azimuth [°]	TVD [ft]	Vert Sect [ft]	North [ft]	East [ft]	DLS [°/100ft]	Comments
0.00†	0.000	84.500	0.00	0.00	0.00	0.00	0.00	
15.00	0.000	84.500	15.00	0.00	0.00	0.00	0.00	
152.00	1.200	84.500	151.99	-1.41	0.14	1.43	0.88	
245.00	0.200	119.700	244.98	-2.51	0.15	2.54	1.12	
275.00	0.800	266.600	274.98	-2.35	0.11	2.37	3.25	
306.00	1.500	261.700	305.97	-1.75	0.04	1.76	2.28	
337.00	2.700	265.900	336.95	-0.63	-0.07	0.63	3.90	
383.00	4.200	269.100	382.87	2.11	-0.17	-2.14	3.29	
426.00	5.500	270.800	425.71	5.73	-0.17	-5.77	3.04	
472.00	6.900	271.900	471.44	10.69	-0.05	-10.74	3.05	
515.00	8.200	272.900	514.07	16.33	0.19	-16.38	3.04	
560.00	9.100	272.200	558.56	23.09	0.49	-23.14	2.01	
605.00	10.100	270.500	602.93	30.57	0.66	-30.65	2.31	
693.00	11.200	271.200	689.41	46.79	0.91	-46.91	1.26	
782.00	12.200	272.900	776.56	64.80	1.57	-64.94	1.19	
875.00	12.500	273.600	867.41	84.68	2.70	-84.80	0.36	
964.00	13.300	272.900	954.16	104.54	3.82	-104.64	0.92	
1007.00	14.300	277.200	995.92	114.79	4.73	-114.85	3.33	
1052.00	15.200	277.900	1039.44	126.24	6.24	-126.20	2.04	
1097.00	16.100	277.500	1082.77	138.36	7.87	-138.23	2.01	
1141.00	17.400	278.600	1124.90	151.03	9.65	-150.79	3.04	
1184.00	18.500	278.200	1165.81	164.26	11.58	-163.90	2.57	
1229.00	19.400	277.200	1208.37	178.86	13.54	-178.38	2.13	
1273.00	19.900	275.800	1249.81	193.66	15.21	-193.08	1.56	
1361.00	21.100	275.400	1332.23	224.47	18.21	-223.75	1.37	
1448.00	22.200	275.800	1413.09	256.57	21.35	-255.69	1.28	
1537.00	22.100	275.000	1495.52	290.12	24.51	-289.10	0.36	
1627.00	22.300	275.000	1578.85	324.13	27.47	-322.97	0.22	
1717.00	21.800	274.300	1662.27	357.91	30.21	-356.65	0.63	
1804.00	21.600	274.700	1743.10	390.08	32.73	-388.72	0.29	
1893.00	20.900	273.300	1826.05	422.32	34.99	-420.89	0.97	
1983.00	20.000	273.300	1910.38	453.75	36.80	-452.29	1.00	
2073.00	20.200	274.700	1994.90	484.67	38.96	-483.14	0.58	
2161.00	20.700	275.000	2077.35	515.41	41.56	-513.77	0.58	
2250.00	20.500	275.400	2160.66	546.73	44.40	-544.96	0.27	
2337.00	20.600	275.800	2242.13	577.26	47.38	-575.35	0.20	
2424.00	21.000	275.800	2323.46	608.16	50.50	-606.09	0.46	
2512.00	21.500	274.300	2405.47	640.05	53.30	-637.86	0.84	
2601.00	21.000	274.700	2488.42	672.30	55.83	-670.01	0.58	
2690.00	21.300	274.000	2571.43	704.41	58.27	-702.03	0.44	
2778.00	20.400	275.800	2653.66	735.73	60.93	-733.24	1.26	
2866.00	19.700	275.400	2736.33	765.90	63.88	-763.26	0.81	
2955.00	20.700	276.500	2819.85	796.62	67.07	-793.83	1.20	
3044.00	21.500	278.600	2902.89	828.63	71.29	-825.58	1.24	
3133.00	21.500	279.300	2985.70	861.19	76.36	-857.80	0.29	



# Actual Wellpath Report

RIVERBEND 22-12 AWP

Page 3 of 6



INTEQ

REFERENCE WELLPATH IDENTIFICATION			
Operator	KERR MCGEE OIL & GAS ONSHORE LP	Slot	SLOT#06 RIVERBEND 22-12 (2420'FSL & 2219'FEL)
Area	COLORADO	Well	RIVERBEND 22-12
Field	WELD COUNTY (KERR MCGEE)	Wellbore	RIVERBEND 22-12 AWB
Facility	SEC.12-T1N-R67W		

WELLPATH DATA (120 stations)								
MD [ft]	Inclination [°]	Azimuth [°]	TVD [ft]	Vert Sect [ft]	North [ft]	East [ft]	DLS [°/100ft]	Comments
3221.00	21.700	278.600	3067.52	893.52	81.40	-889.80	0.37	
3310.00	21.500	276.500	3150.27	926.25	85.71	-922.28	0.90	
3400.00	20.800	274.700	3234.21	958.72	88.89	-954.59	1.06	
3491.00	21.600	275.400	3319.05	991.63	91.79	-987.37	0.92	
3580.00	20.700	278.600	3402.05	1023.71	95.68	-1019.23	1.64	
3670.00	20.200	274.000	3486.39	1055.13	99.14	-1050.46	1.87	
3760.00	20.000	274.700	3570.90	1086.05	101.49	-1081.30	0.35	
3848.00	20.600	274.700	3653.44	1116.58	103.99	-1111.73	0.68	
3938.00	20.900	274.700	3737.60	1148.47	106.60	-1143.51	0.33	
4027.00	20.700	272.600	3820.80	1180.05	108.62	-1175.04	0.87	
4116.00	20.700	274.000	3904.06	1211.49	110.43	-1206.45	0.56	
4205.00	21.500	273.300	3987.09	1243.51	112.46	-1238.42	0.94	
4294.00	21.900	272.200	4069.78	1276.39	114.04	-1271.29	0.64	
4384.00	22.000	272.600	4153.26	1309.98	115.45	-1304.90	0.20	
4473.00	22.000	273.600	4235.78	1343.30	117.25	-1338.19	0.42	
4560.00	20.900	276.500	4316.75	1375.10	120.03	-1369.88	1.76	
4649.00	20.100	277.200	4400.12	1406.26	123.75	-1400.82	0.94	
4739.00	19.100	275.400	4484.90	1436.44	127.07	-1430.83	1.30	
4829.00	18.400	275.000	4570.12	1465.37	129.69	-1459.64	0.79	
4918.00	18.800	274.700	4654.48	1493.76	132.09	-1487.92	0.46	
5007.00	19.000	273.600	4738.68	1522.58	134.18	-1516.67	0.46	
5050.00	18.400	273.300	4779.41	1536.36	135.01	-1530.43	1.41	
5095.00	17.900	274.300	4822.17	1550.37	135.94	-1544.42	1.31	
5140.00	16.800	272.900	4865.12	1563.78	136.78	-1557.81	2.61	
5184.00	15.600	273.300	4907.37	1576.05	137.44	-1570.07	2.74	
5229.00	14.900	273.600	4950.79	1587.88	138.16	-1581.88	1.57	
5274.00	14.100	274.300	4994.35	1599.14	138.93	-1593.12	1.82	
5317.00	13.300	274.000	5036.13	1609.32	139.67	-1603.28	1.87	
5363.00	12.800	275.800	5080.94	1619.71	140.55	-1613.63	1.40	
5406.00	12.000	275.400	5122.94	1628.94	141.45	-1622.82	1.87	
5451.00	11.500	274.000	5167.00	1638.10	142.21	-1631.95	1.28	
5494.00	11.300	277.200	5209.15	1646.60	143.03	-1640.41	1.54	
5539.00	10.600	277.500	5253.33	1655.14	144.13	-1648.88	1.56	
5583.00	10.100	277.500	5296.61	1663.04	145.16	-1656.72	1.14	
5626.00	9.500	275.800	5338.98	1670.36	146.01	-1663.99	1.55	
5671.00	8.800	274.700	5383.41	1677.51	146.67	-1671.12	1.60	
5715.00	8.100	275.800	5426.93	1683.98	147.26	-1677.55	1.63	
5759.00	6.900	280.300	5470.56	1689.71	148.04	-1683.24	3.03	
5805.00	6.400	279.600	5516.25	1695.02	148.96	-1688.49	1.10	
5848.00	6.200	277.500	5558.99	1699.73	149.67	-1693.15	0.71	
5894.00	5.700	277.500	5604.74	1704.50	150.29	-1697.88	1.09	
5939.00	5.000	280.300	5649.54	1708.68	150.93	-1702.02	1.66	
5983.00	4.700	278.600	5693.39	1712.39	151.54	-1705.69	0.76	
6028.00	3.800	275.800	5738.26	1715.73	151.97	-1709.00	2.05	
6071.00	3.400	275.800	5781.18	1718.43	152.24	-1711.68	0.93	



# Actual Wellpath Report

RIVERBEND 22-12 AWP

Page 4 of 6



INTEQ

## REFERENCE WELLPATH IDENTIFICATION

Operator	KERR MCGEE OIL & GAS ONSHORE LP	Slot	SLOT#06 RIVERBEND 22-12 (2420'FSL & 2219'FEL)
Area	COLORADO	Well	RIVERBEND 22-12
Field	WELD COUNTY (KERR MCGEE)	Wellbore	RIVERBEND 22-12 AWB
Facility	SEC.12-T1N-R67W		

## WELLPATH DATA (120 stations)

MD [ft]	Inclination [°]	Azimuth [°]	TVD [ft]	Vert Sect [ft]	North [ft]	East [ft]	DLS [°/100ft]	Comments
6115.00	3.000	285.200	5825.11	1720.86	152.68	-1714.09	1.50	
6160.00	2.700	285.900	5870.05	1723.07	153.28	-1716.25	0.67	
6205.00	2.800	284.900	5915.00	1725.19	153.85	-1718.33	0.25	
6250.00	2.600	282.100	5959.95	1727.29	154.35	-1720.39	0.53	
6294.00	1.800	275.800	6003.92	1728.97	154.62	-1722.05	1.90	
6339.00	1.600	273.600	6048.90	1730.31	154.74	-1723.38	0.47	
6384.00	0.900	279.300	6093.89	1731.29	154.83	-1724.36	1.58	
6473.00	0.400	200.900	6182.88	1732.07	154.65	-1725.16	1.02	
6562.00	0.300	161.100	6271.88	1732.06	154.14	-1725.20	0.29	
6651.00	0.300	178.700	6360.88	1731.93	153.69	-1725.12	0.10	
6740.00	0.100	222.300	6449.88	1731.95	153.40	-1725.16	0.27	
6828.00	0.200	187.500	6537.88	1732.00	153.19	-1725.23	0.15	
6916.00	0.300	333.800	6625.88	1732.13	153.25	-1725.36	0.54	
7005.00	0.600	319.000	6714.88	1732.59	153.81	-1725.77	0.36	
7093.00	1.100	316.500	6802.87	1733.56	154.77	-1726.65	0.57	
7180.00	1.100	254.000	6889.85	1734.97	155.14	-1728.03	1.31	
7269.00	0.900	214.000	6978.84	1736.10	154.33	-1729.24	0.80	
7358.00	1.600	156.600	7067.82	1735.83	152.61	-1729.14	1.52	
7447.00	1.300	145.700	7156.79	1734.59	150.63	-1728.07	0.46	
7537.00	1.300	106.300	7246.77	1732.94	149.50	-1726.52	0.97	
7624.00	1.400	99.300	7333.75	1730.91	149.05	-1724.52	0.22	
7714.00	1.400	104.900	7423.72	1728.73	148.59	-1722.37	0.15	
7804.00	1.300	97.900	7513.70	1726.63	148.17	-1720.30	0.21	
7895.00	1.500	101.400	7604.67	1724.41	147.79	-1718.11	0.24	
7984.00	1.300	99.600	7693.64	1722.24	147.40	-1715.97	0.23	
8072.00	1.200	107.700	7781.62	1720.35	146.95	-1714.11	0.23	
8163.00	1.200	121.100	7872.60	1718.56	146.17	-1712.39	0.31	
8252.00	1.000	147.100	7961.59	1717.24	145.03	-1711.17	0.60	
8334.00	1.300	122.500	8043.57	1715.97	143.93	-1709.99	0.70	LAST BHI MWD SURVEY
8390.00	1.300	122.500	8099.55	1714.84	143.25	-1708.92	0.00	PROJECTION TO BIT

## HOLE & CASING SECTIONS Ref Wellbore: RIVERBEND 22-12 AWB Ref Wellpath: RIVERBEND 22-12 AWP

String/Diameter	Start MD [ft]	End MD [ft]	Interval [ft]	Start TVD [ft]	End TVD [ft]	Start N/S [ft]	Start E/W [ft]	End N/S [ft]	End E/W [ft]
12.25in Open Hole	15.00	938.00	923.00	15.00	928.85	0.00	0.00	3.51	-98.71
8.625in Casing Surface	15.00	938.00	923.00	15.00	928.85	0.00	0.00	3.51	-98.71
7.875in Open Hole	938.00	8390.00	7452.00	928.85	8099.55	3.51	-98.71	143.25	-1708.92



# Actual Wellpath Report

RIVERBEND 22-12 AWP

Page 5 of 6



INTEQ

## REFERENCE WELLPATH IDENTIFICATION

Operator	KERR MCGEE OIL & GAS ONSHORE LP	Slot	SLOT#06 RIVERBEND 22-12 (2420'FSL & 2219'FEL)
Area	COLORADO	Well	RIVERBEND 22-12
Field	WELD COUNTY (KERR MCGEE)	Wellbore	RIVERBEND 22-12 AWB
Facility	SEC.12-T1N-R67W		

## TARGETS

Name	MD [ft]	TVD [ft]	North [ft]	East [ft]	Grid East [srv ft]	Grid North [srv ft]	Latitude	Longitude	Shape
RIVERBEND 22-12 BHL ON PLAT (2590'FSL & 1320'FWL, REV-1)		6000.00	166.54	-1718.56	3183636.64	1267358.18	40°03'55.523"N	104°50'37.964"W	point
RIVERBEND 22-12 GEO TARGET 50' RADIUS (2584'FSL & 1320'FWL, REV- 2)		6000.00	160.54	-1718.56	3183636.69	1267352.18	40°03'55.464"N	104°50'37.964"W	circle
RIVERBEND 22-12 HARDLINE 50'N OF GEO TARGET		6000.00	210.54	-1718.56	3183636.31	1267402.18	40°03'55.958"N	104°50'37.964"W	point

## WELLPATH COMPOSITION Ref Wellbore: RIVERBEND 22-12 AWB Ref Wellpath: RIVERBEND 22-12 AWP

Start MD [ft]	End MD [ft]	Positional Uncertainty Model	Log Name/Comment	Wellbore
15.00	875.00	NaviTrak (Standard)	BHI MWD SURVEYS 12.25 HOLE <152-875>	RIVERBEND 22-12 AWB
875.00	8334.00	NaviTrak (Standard)	BHI MWD SURVEYS 7.875 HOLE <964-8334>	RIVERBEND 22-12 AWB
8334.00	8390.00	Blind Drilling (std)	Projection to bit	RIVERBEND 22-12 AWB



# Actual Wellpath Report

RIVERBEND 22-12 AWP

Page 6 of 6



INTEQ

## REFERENCE WELLPATH IDENTIFICATION

Operator	KERR MCGEE OIL & GAS ONSHORE LP	Slot	SLOT#06 RIVERBEND 22-12 (2420'FSL & 2219'FEL)
Area	COLORADO	Well	RIVERBEND 22-12
Field	WELD COUNTY (KERR MCGEE)	Wellbore	RIVERBEND 22-12 AWB
Facility	SEC.12-T1N-R67W		

## WELLPATH COMMENTS

MD [ft]	Inclination [°]	Azimuth [°]	TVD [ft]	Comment
8334.00	1.300	122.500	8043.57	LAST BHI MWD SURVEY
8390.00	1.300	122.500	8099.55	PROJECTION TO BIT