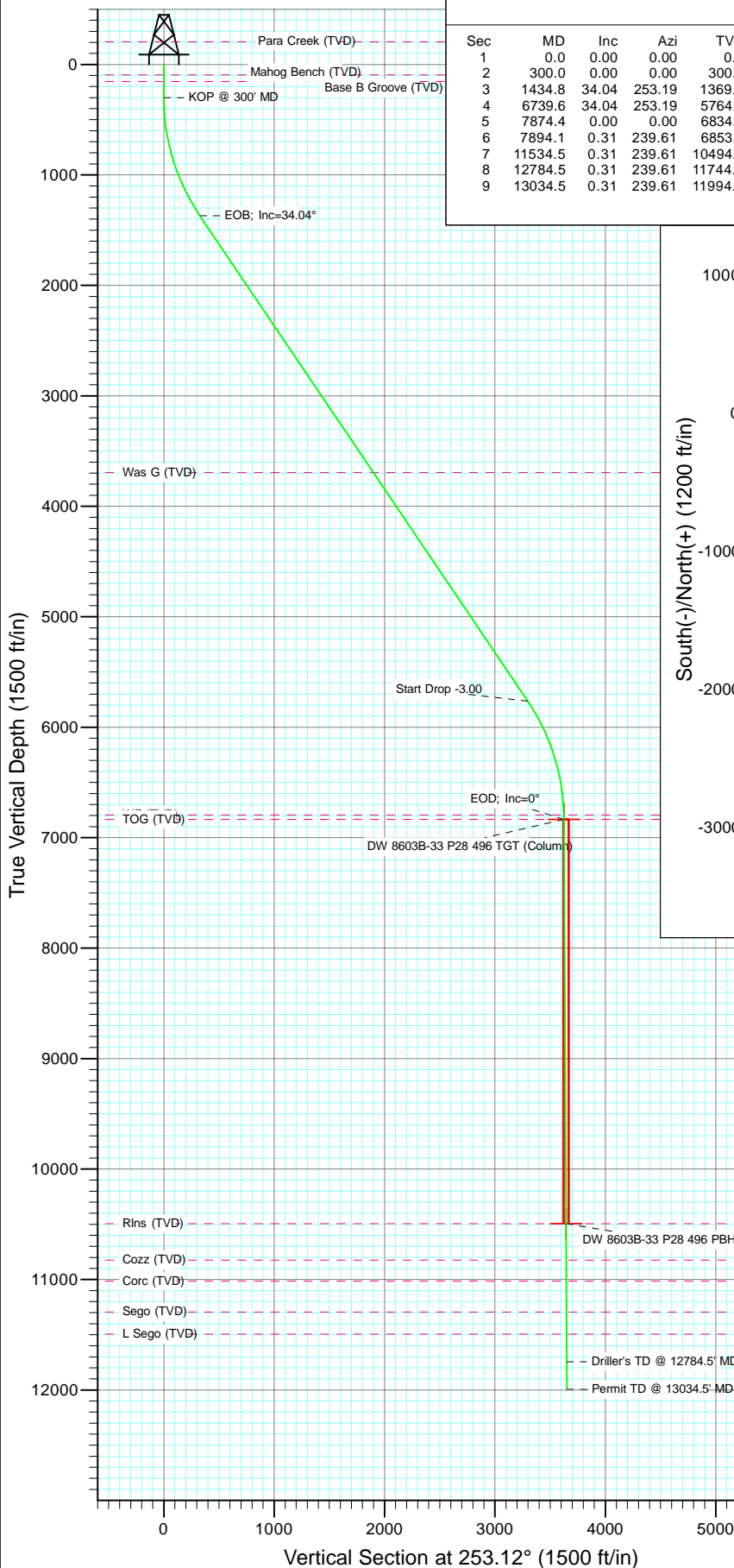


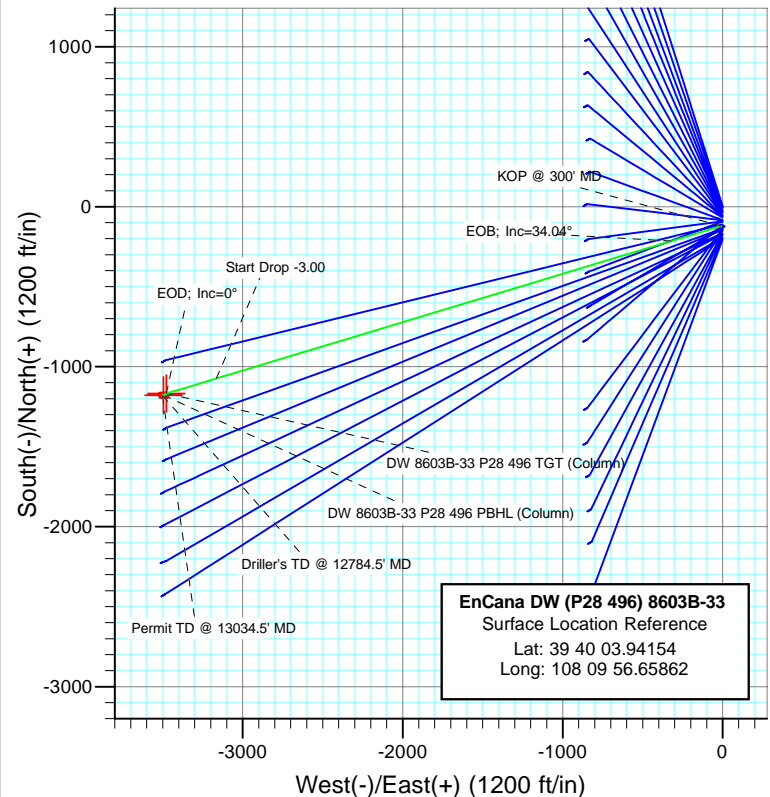


Project: Double Willow
Site: S28-T4S-R96W (P28 496)(column pattern)
Well: DW 8603B-33 (P28 496)
Wellbore: DD
Design: Plan #1



SECTION DETAILS

Sec	MD	Inc	Azi	TVD	+N/-S	+E/-W	Dleg	TFace	V Sect	Target
1	0.0	0.00	0.00	0.0	-120.0	-8.7	0.00	0.00	0.0	
2	300.0	0.00	0.00	300.0	-120.0	-8.7	0.00	0.00	0.0	
3	1434.8	34.04	253.19	1369.2	-214.6	-322.0	3.00	253.19	327.3	
4	6739.6	34.04	253.19	5764.8	-1073.4	-3164.9	0.00	0.00	3297.1	DW 8603B-33 P28 496 TGT (Column)
5	7874.4	0.00	0.00	6834.0	-1168.1	-3478.3	3.00	180.00	3624.4	DW 8603B-33 P28 496 PBHL (Column)
6	7894.1	0.31	239.61	6853.7	-1168.1	-3478.3	1.57	239.61	3624.5	
7	11534.5	0.31	239.61	10494.0	-1178.1	-3495.3	0.00	0.00	3643.6	
8	12784.5	0.31	239.61	11744.0	-1181.5	-3501.1	0.00	0.00	3650.2	
9	13034.5	0.31	239.61	11994.0	-1182.2	-3502.3	0.00	0.00	3651.5	



FORMATION TOP DETAILS

TVDPath	MDPath	Formation
94.0	94.0	Mahog Bench (TVD)
154.0	154.0	Base B Groove (TVD)
3694.0	4240.5	Was G (TVD)
6794.0	7834.4	WF (TVD)
6834.0	7874.4	TOG (TVD)
10494.0	11534.5	Rins (TVD)
10824.0	11864.5	Cozz (TVD)
11014.0	12054.5	Corc (TVD)
11294.0	12334.5	Sego (TVD)
11494.0	12534.5	L Sego (TVD)



Azimuths to True North
Magnetic North: 10.52°

Magnetic Field
Strength: 52361.4nT
Dip Angle: 65.86°
Date: 11/29/2010
Model: IGRF2010

Type	Target	Azimuth	Origin	Type	N/S	E/W	From	TV
Target	DW 8603B-33 P28 496 PBHL (Column)	253.12	-120.0	-8.7	0.0			
Name	TVD	+N/-S	+E/-W	Latitude	Longitude			
DW 8603B-33 P28 496 TGT (Column)	6834.0	-1168.1	-3478.339° 39'	53.58 N 108° 10'	41.03 W			
DW 8603B-33 P28 496 PBHL (Column)	10494.0	-1178.1	-3495.339° 39'	53.48 N 108° 10'	41.24 W			

Cathedral Energy Services

Planning Report

Database:	EDM 5000.1 US Multi Users DB	Local Co-ordinate Reference:	Site S28-T4S-R96W (P28 496)(column pattern)
Company:	EnCana Oil & Gas (USA) Inc	TVD Reference:	WELL @ 7804.0ft (Original Well Elev)
Project:	Double Willow	MD Reference:	WELL @ 7804.0ft (Original Well Elev)
Site:	S28-T4S-R96W (P28 496)(column pattern)	North Reference:	True
Well:	DW 8603B-33 (P28 496)	Survey Calculation Method:	Minimum Curvature
Wellbore:	DD		
Design:	Plan #1		

Project	Double Willow		
Map System:	US State Plane 1983	System Datum:	Mean Sea Level
Geo Datum:	North American Datum 1983		
Map Zone:	Colorado Central Zone		

Site	S28-T4S-R96W (P28 496)(column pattern)			
Site Position:		Northing:	1,679,243.29 ft	Latitude: 39° 40' 5.13 N
From:	Lat/Long	Easting:	2,249,687.54 ft	Longitude: 108° 9' 56.55 W
Position Uncertainty:	0.0 ft	Slot Radius:	13.200 in	Grid Convergence: -1.68 °

Well	DW 8603B-33 (P28 496)			
Well Position	+N/-S	-120.0 ft	Northing:	1,679,123.61 ft
	+E/-W	-8.7 ft	Easting:	2,249,675.37 ft
Position Uncertainty		0.0 ft	Wellhead Elevation:	ft
			Ground Level:	7,771.0 ft

Wellbore	DD				
Magnetics	Model Name	Sample Date	Declination (°)	Dip Angle (°)	Field Strength (nT)
	IGRF2010	11/29/2010	10.52	65.86	52,361

Design	Plan #1			
Audit Notes:				
Version:	Phase:	PLAN	Tie On Depth:	0.0
Vertical Section:	Depth From (TVD) (ft)	+N/-S (ft)	+E/-W (ft)	Direction (°)
	0.0	-120.0	-8.7	253.12

Plan Sections										
Measured Depth (ft)	Inclination (°)	Azimuth (°)	Vertical Depth (ft)	+N/-S (ft)	+E/-W (ft)	Dogleg Rate (°/100ft)	Build Rate (°/100ft)	Turn Rate (°/100ft)	TFO (°)	Target
0.0	0.00	0.00	0.0	-120.0	-8.7	0.00	0.00	0.00	0.00	
300.0	0.00	0.00	300.0	-120.0	-8.7	0.00	0.00	0.00	0.00	
1,434.8	34.04	253.19	1,369.2	-214.6	-322.0	3.00	3.00	0.00	253.19	
6,739.6	34.04	253.19	5,764.8	-1,073.4	-3,164.9	0.00	0.00	0.00	0.00	
7,874.4	0.00	0.00	6,834.0	-1,168.1	-3,478.3	3.00	-3.00	0.00	180.00	DW 8603B-33 P28 49
7,894.1	0.31	239.61	6,853.7	-1,168.1	-3,478.3	1.57	1.57	-610.10	239.61	
11,534.5	0.31	239.61	10,494.0	-1,178.1	-3,495.3	0.00	0.00	0.00	0.00	DW 8603B-33 P28 49
12,784.5	0.31	239.61	11,744.0	-1,181.5	-3,501.1	0.00	0.00	0.00	0.00	
13,034.5	0.31	239.61	11,994.0	-1,182.2	-3,502.3	0.00	0.00	0.00	0.00	

Cathedral Energy Services

Planning Report

Database:	EDM 5000.1 US Multi Users DB	Local Co-ordinate Reference:	Site S28-T4S-R96W (P28 496)(column pattern)
Company:	EnCana Oil & Gas (USA) Inc	TVD Reference:	WELL @ 7804.0ft (Original Well Elev)
Project:	Double Willow	MD Reference:	WELL @ 7804.0ft (Original Well Elev)
Site:	S28-T4S-R96W (P28 496)(column pattern)	North Reference:	True
Well:	DW 8603B-33 (P28 496)	Survey Calculation Method:	Minimum Curvature
Wellbore:	DD		
Design:	Plan #1		

Planned Survey

Measured Depth (ft)	Inclination (°)	Azimuth (°)	Vertical Depth (ft)	+N/-S (ft)	+E/-W (ft)	Vertical Section (ft)	Dogleg Rate (°/100ft)	Build Rate (°/100ft)	Comments / Formations
0.0	0.00	0.00	0.0	-120.0	-8.7	0.0	0.00	0.00	
94.0	0.00	0.00	94.0	-120.0	-8.7	0.0	0.00	0.00	Mahog Bench (TVD)
100.0	0.00	0.00	100.0	-120.0	-8.7	0.0	0.00	0.00	
154.0	0.00	0.00	154.0	-120.0	-8.7	0.0	0.00	0.00	Base B Groove (TVD)
200.0	0.00	0.00	200.0	-120.0	-8.7	0.0	0.00	0.00	
300.0	0.00	0.00	300.0	-120.0	-8.7	0.0	0.00	0.00	KOP @ 300' MD
400.0	3.00	253.19	400.0	-120.7	-11.2	2.6	3.00	3.00	
500.0	6.00	253.19	499.6	-123.0	-18.7	10.5	3.00	3.00	
600.0	9.00	253.19	598.8	-126.8	-31.2	23.5	3.00	3.00	
700.0	12.00	253.19	697.1	-132.1	-48.6	41.7	3.00	3.00	
800.0	15.00	253.19	794.3	-138.8	-71.0	65.1	3.00	3.00	
900.0	18.00	253.19	890.2	-147.0	-98.1	93.5	3.00	3.00	
1,000.0	21.00	253.19	984.4	-156.7	-130.1	126.9	3.00	3.00	
1,100.0	24.00	253.19	1,076.8	-167.7	-166.7	165.1	3.00	3.00	
1,200.0	27.00	253.19	1,167.1	-180.2	-207.9	208.2	3.00	3.00	
1,300.0	30.00	253.19	1,254.9	-194.0	-253.6	255.9	3.00	3.00	
1,400.0	33.00	253.19	1,340.2	-209.1	-303.6	308.1	3.00	3.00	
1,434.8	34.04	253.19	1,369.2	-214.6	-322.0	327.3	3.00	3.00	EOB; Inc=34.04°
1,500.0	34.04	253.19	1,423.2	-225.2	-357.0	363.8	0.00	0.00	
1,600.0	34.04	253.19	1,506.1	-241.4	-410.5	419.8	0.00	0.00	
1,700.0	34.04	253.19	1,588.9	-257.6	-464.1	475.8	0.00	0.00	
1,800.0	34.04	253.19	1,671.8	-273.8	-517.7	531.8	0.00	0.00	
1,900.0	34.04	253.19	1,754.7	-290.0	-571.3	587.8	0.00	0.00	
2,000.0	34.04	253.19	1,837.5	-306.1	-624.9	643.7	0.00	0.00	
2,100.0	34.04	253.19	1,920.4	-322.3	-678.5	699.7	0.00	0.00	
2,200.0	34.04	253.19	2,003.2	-338.5	-732.1	755.7	0.00	0.00	
2,300.0	34.04	253.19	2,086.1	-354.7	-785.7	811.7	0.00	0.00	
2,400.0	34.04	253.19	2,169.0	-370.9	-839.3	867.7	0.00	0.00	
2,500.0	34.04	253.19	2,251.8	-387.1	-892.9	923.7	0.00	0.00	
2,600.0	34.04	253.19	2,334.7	-403.3	-946.5	979.6	0.00	0.00	
2,700.0	34.04	253.19	2,417.6	-419.5	-1,000.0	1,035.6	0.00	0.00	
2,800.0	34.04	253.19	2,500.4	-435.7	-1,053.6	1,091.6	0.00	0.00	
2,900.0	34.04	253.19	2,583.3	-451.8	-1,107.2	1,147.6	0.00	0.00	
3,000.0	34.04	253.19	2,666.1	-468.0	-1,160.8	1,203.6	0.00	0.00	
3,100.0	34.04	253.19	2,749.0	-484.2	-1,214.4	1,259.6	0.00	0.00	
3,200.0	34.04	253.19	2,831.9	-500.4	-1,268.0	1,315.5	0.00	0.00	
3,300.0	34.04	253.19	2,914.7	-516.6	-1,321.6	1,371.5	0.00	0.00	
3,400.0	34.04	253.19	2,997.6	-532.8	-1,375.2	1,427.5	0.00	0.00	
3,500.0	34.04	253.19	3,080.4	-549.0	-1,428.8	1,483.5	0.00	0.00	
3,600.0	34.04	253.19	3,163.3	-565.2	-1,482.4	1,539.5	0.00	0.00	
3,700.0	34.04	253.19	3,246.2	-581.4	-1,536.0	1,595.5	0.00	0.00	
3,800.0	34.04	253.19	3,329.0	-597.5	-1,589.5	1,651.4	0.00	0.00	
3,900.0	34.04	253.19	3,411.9	-613.7	-1,643.1	1,707.4	0.00	0.00	
4,000.0	34.04	253.19	3,494.7	-629.9	-1,696.7	1,763.4	0.00	0.00	
4,100.0	34.04	253.19	3,577.6	-646.1	-1,750.3	1,819.4	0.00	0.00	
4,200.0	34.04	253.19	3,660.5	-662.3	-1,803.9	1,875.4	0.00	0.00	
4,240.5	34.04	253.19	3,694.0	-668.8	-1,825.6	1,898.0	0.00	0.00	Was G (TVD)
4,300.0	34.04	253.19	3,743.3	-678.5	-1,857.5	1,931.4	0.00	0.00	
4,400.0	34.04	253.19	3,826.2	-694.7	-1,911.1	1,987.3	0.00	0.00	
4,500.0	34.04	253.19	3,909.0	-710.9	-1,964.7	2,043.3	0.00	0.00	
4,600.0	34.04	253.19	3,991.9	-727.0	-2,018.3	2,099.3	0.00	0.00	
4,700.0	34.04	253.19	4,074.8	-743.2	-2,071.9	2,155.3	0.00	0.00	

Cathedral Energy Services

Planning Report

Database:	EDM 5000.1 US Multi Users DB	Local Co-ordinate Reference:	Site S28-T4S-R96W (P28 496)(column pattern)
Company:	EnCana Oil & Gas (USA) Inc	TVD Reference:	WELL @ 7804.0ft (Original Well Elev)
Project:	Double Willow	MD Reference:	WELL @ 7804.0ft (Original Well Elev)
Site:	S28-T4S-R96W (P28 496)(column pattern)	North Reference:	True
Well:	DW 8603B-33 (P28 496)	Survey Calculation Method:	Minimum Curvature
Wellbore:	DD		
Design:	Plan #1		

Planned Survey									
Measured Depth (ft)	Inclination (°)	Azimuth (°)	Vertical Depth (ft)	+N/-S (ft)	+E/-W (ft)	Vertical Section (ft)	Dogleg Rate (°/100ft)	Build Rate (°/100ft)	Comments / Formations
4,800.0	34.04	253.19	4,157.6	-759.4	-2,125.5	2,211.3	0.00	0.00	
4,900.0	34.04	253.19	4,240.5	-775.6	-2,179.0	2,267.2	0.00	0.00	
5,000.0	34.04	253.19	4,323.4	-791.8	-2,232.6	2,323.2	0.00	0.00	
5,100.0	34.04	253.19	4,406.2	-808.0	-2,286.2	2,379.2	0.00	0.00	
5,200.0	34.04	253.19	4,489.1	-824.2	-2,339.8	2,435.2	0.00	0.00	
5,300.0	34.04	253.19	4,571.9	-840.4	-2,393.4	2,491.2	0.00	0.00	
5,400.0	34.04	253.19	4,654.8	-856.6	-2,447.0	2,547.2	0.00	0.00	
5,500.0	34.04	253.19	4,737.7	-872.7	-2,500.6	2,603.1	0.00	0.00	
5,600.0	34.04	253.19	4,820.5	-888.9	-2,554.2	2,659.1	0.00	0.00	
5,700.0	34.04	253.19	4,903.4	-905.1	-2,607.8	2,715.1	0.00	0.00	
5,800.0	34.04	253.19	4,986.2	-921.3	-2,661.4	2,771.1	0.00	0.00	
5,900.0	34.04	253.19	5,069.1	-937.5	-2,715.0	2,827.1	0.00	0.00	
6,000.0	34.04	253.19	5,152.0	-953.7	-2,768.5	2,883.1	0.00	0.00	
6,100.0	34.04	253.19	5,234.8	-969.9	-2,822.1	2,939.0	0.00	0.00	
6,200.0	34.04	253.19	5,317.7	-986.1	-2,875.7	2,995.0	0.00	0.00	
6,300.0	34.04	253.19	5,400.5	-1,002.3	-2,929.3	3,051.0	0.00	0.00	
6,400.0	34.04	253.19	5,483.4	-1,018.4	-2,982.9	3,107.0	0.00	0.00	
6,500.0	34.04	253.19	5,566.3	-1,034.6	-3,036.5	3,163.0	0.00	0.00	
6,600.0	34.04	253.19	5,649.1	-1,050.8	-3,090.1	3,219.0	0.00	0.00	
6,700.0	34.04	253.19	5,732.0	-1,067.0	-3,143.7	3,274.9	0.00	0.00	
6,739.6	34.04	253.19	5,764.8	-1,073.4	-3,164.9	3,297.1	0.00	0.00	Start Drop -3.00
6,800.0	32.23	253.19	5,815.4	-1,083.0	-3,196.5	3,330.1	3.00	-3.00	
6,900.0	29.23	253.19	5,901.3	-1,097.7	-3,245.4	3,381.2	3.00	-3.00	
7,000.0	26.23	253.19	5,989.8	-1,111.2	-3,290.0	3,427.7	3.00	-3.00	
7,100.0	23.23	253.19	6,080.6	-1,123.3	-3,330.0	3,469.6	3.00	-3.00	
7,200.0	20.23	253.19	6,173.5	-1,134.0	-3,365.5	3,506.6	3.00	-3.00	
7,300.0	17.23	253.19	6,268.2	-1,143.3	-3,396.2	3,538.7	3.00	-3.00	
7,400.0	14.23	253.19	6,364.5	-1,151.1	-3,422.1	3,565.8	3.00	-3.00	
7,500.0	11.23	253.19	6,462.0	-1,157.5	-3,443.2	3,587.9	3.00	-3.00	
7,600.0	8.23	253.19	6,560.5	-1,162.4	-3,459.4	3,604.8	3.00	-3.00	
7,700.0	5.23	253.19	6,659.8	-1,165.8	-3,470.6	3,616.5	3.00	-3.00	
7,800.0	2.23	253.19	6,759.6	-1,167.7	-3,476.9	3,623.0	3.00	-3.00	
7,834.4	1.20	253.19	6,794.0	-1,168.0	-3,477.9	3,624.0	3.00	-3.00	WF (TVD)
7,874.4	0.00	0.00	6,834.0	-1,168.1	-3,478.3	3,624.4	3.00	-3.00	EOD; Inc=0° - TOG (TVD) - DW 8603B-33 P28
7,894.1	0.31	239.61	6,853.7	-1,168.1	-3,478.3	3,624.5	1.57	1.57	
7,900.0	0.31	239.61	6,859.6	-1,168.1	-3,478.3	3,624.5	0.00	0.00	
8,000.0	0.31	239.61	6,959.6	-1,168.4	-3,478.8	3,625.1	0.00	0.00	
8,100.0	0.31	239.61	7,059.6	-1,168.7	-3,479.3	3,625.6	0.00	0.00	
8,200.0	0.31	239.61	7,159.6	-1,168.9	-3,479.7	3,626.1	0.00	0.00	
8,300.0	0.31	239.61	7,259.6	-1,169.2	-3,480.2	3,626.6	0.00	0.00	
8,400.0	0.31	239.61	7,359.6	-1,169.5	-3,480.7	3,627.2	0.00	0.00	
8,500.0	0.31	239.61	7,459.6	-1,169.8	-3,481.1	3,627.7	0.00	0.00	
8,600.0	0.31	239.61	7,559.6	-1,170.0	-3,481.6	3,628.2	0.00	0.00	
8,700.0	0.31	239.61	7,659.6	-1,170.3	-3,482.1	3,628.7	0.00	0.00	
8,800.0	0.31	239.61	7,759.6	-1,170.6	-3,482.5	3,629.3	0.00	0.00	
8,900.0	0.31	239.61	7,859.6	-1,170.9	-3,483.0	3,629.8	0.00	0.00	
9,000.0	0.31	239.61	7,959.6	-1,171.1	-3,483.5	3,630.3	0.00	0.00	
9,100.0	0.31	239.61	8,059.6	-1,171.4	-3,483.9	3,630.8	0.00	0.00	
9,200.0	0.31	239.61	8,159.6	-1,171.7	-3,484.4	3,631.4	0.00	0.00	
9,300.0	0.31	239.61	8,259.6	-1,172.0	-3,484.9	3,631.9	0.00	0.00	
9,400.0	0.31	239.61	8,359.6	-1,172.2	-3,485.3	3,632.4	0.00	0.00	
9,500.0	0.31	239.61	8,459.6	-1,172.5	-3,485.8	3,632.9	0.00	0.00	

Cathedral Energy Services

Planning Report

Database:	EDM 5000.1 US Multi Users DB	Local Co-ordinate Reference:	Site S28-T4S-R96W (P28 496)(column pattern)
Company:	EnCana Oil & Gas (USA) Inc	TVD Reference:	WELL @ 7804.0ft (Original Well Elev)
Project:	Double Willow	MD Reference:	WELL @ 7804.0ft (Original Well Elev)
Site:	S28-T4S-R96W (P28 496)(column pattern)	North Reference:	True
Well:	DW 8603B-33 (P28 496)	Survey Calculation Method:	Minimum Curvature
Wellbore:	DD		
Design:	Plan #1		

Planned Survey									
Measured Depth (ft)	Inclination (°)	Azimuth (°)	Vertical Depth (ft)	+N/-S (ft)	+E/-W (ft)	Vertical Section (ft)	Dogleg Rate (°/100ft)	Build Rate (°/100ft)	Comments / Formations
9,600.0	0.31	239.61	8,559.6	-1,172.8	-3,486.3	3,633.5	0.00	0.00	
9,700.0	0.31	239.61	8,659.6	-1,173.1	-3,486.7	3,634.0	0.00	0.00	
9,800.0	0.31	239.61	8,759.6	-1,173.3	-3,487.2	3,634.5	0.00	0.00	
9,900.0	0.31	239.61	8,859.6	-1,173.6	-3,487.7	3,635.0	0.00	0.00	
10,000.0	0.31	239.61	8,959.6	-1,173.9	-3,488.1	3,635.6	0.00	0.00	
10,100.0	0.31	239.61	9,059.6	-1,174.1	-3,488.6	3,636.1	0.00	0.00	
10,200.0	0.31	239.61	9,159.6	-1,174.4	-3,489.1	3,636.6	0.00	0.00	
10,300.0	0.31	239.61	9,259.6	-1,174.7	-3,489.5	3,637.2	0.00	0.00	
10,400.0	0.31	239.61	9,359.6	-1,175.0	-3,490.0	3,637.7	0.00	0.00	
10,500.0	0.31	239.61	9,459.6	-1,175.2	-3,490.5	3,638.2	0.00	0.00	
10,600.0	0.31	239.61	9,559.6	-1,175.5	-3,490.9	3,638.7	0.00	0.00	
10,700.0	0.31	239.61	9,659.6	-1,175.8	-3,491.4	3,639.3	0.00	0.00	
10,800.0	0.31	239.61	9,759.6	-1,176.1	-3,491.9	3,639.8	0.00	0.00	
10,900.0	0.31	239.61	9,859.6	-1,176.3	-3,492.3	3,640.3	0.00	0.00	
11,000.0	0.31	239.61	9,959.5	-1,176.6	-3,492.8	3,640.8	0.00	0.00	
11,100.0	0.31	239.61	10,059.5	-1,176.9	-3,493.3	3,641.4	0.00	0.00	
11,200.0	0.31	239.61	10,159.5	-1,177.2	-3,493.7	3,641.9	0.00	0.00	
11,300.0	0.31	239.61	10,259.5	-1,177.4	-3,494.2	3,642.4	0.00	0.00	
11,400.0	0.31	239.61	10,359.5	-1,177.7	-3,494.7	3,642.9	0.00	0.00	
11,500.0	0.31	239.61	10,459.5	-1,178.0	-3,495.1	3,643.5	0.00	0.00	
11,534.5	0.31	239.61	10,494.0	-1,178.1	-3,495.3	3,643.6	0.00	0.00	Rins (TVD) - DW 8603B-33 P28 496 PBHL (Col
11,600.0	0.31	239.61	10,559.5	-1,178.3	-3,495.6	3,644.0	0.00	0.00	
11,700.0	0.31	239.61	10,659.5	-1,178.5	-3,496.1	3,644.5	0.00	0.00	
11,800.0	0.31	239.61	10,759.5	-1,178.8	-3,496.5	3,645.0	0.00	0.00	
11,864.5	0.31	239.61	10,824.0	-1,179.0	-3,496.8	3,645.4	0.00	0.00	Cozz (TVD)
11,900.0	0.31	239.61	10,859.5	-1,179.1	-3,497.0	3,645.6	0.00	0.00	
12,000.0	0.31	239.61	10,959.5	-1,179.3	-3,497.5	3,646.1	0.00	0.00	
12,054.5	0.31	239.61	11,014.0	-1,179.5	-3,497.7	3,646.4	0.00	0.00	Corc (TVD)
12,100.0	0.31	239.61	11,059.5	-1,179.6	-3,497.9	3,646.6	0.00	0.00	
12,200.0	0.31	239.61	11,159.5	-1,179.9	-3,498.4	3,647.2	0.00	0.00	
12,300.0	0.31	239.61	11,259.5	-1,180.2	-3,498.9	3,647.7	0.00	0.00	
12,334.5	0.31	239.61	11,294.0	-1,180.3	-3,499.0	3,647.9	0.00	0.00	Sego (TVD)
12,400.0	0.31	239.61	11,359.5	-1,180.4	-3,499.3	3,648.2	0.00	0.00	
12,500.0	0.31	239.61	11,459.5	-1,180.7	-3,499.8	3,648.7	0.00	0.00	
12,534.5	0.31	239.61	11,494.0	-1,180.8	-3,500.0	3,648.9	0.00	0.00	L Sego (TVD)
12,600.0	0.31	239.61	11,559.5	-1,181.0	-3,500.3	3,649.3	0.00	0.00	
12,700.0	0.31	239.61	11,659.5	-1,181.3	-3,500.7	3,649.8	0.00	0.00	
12,784.5	0.31	239.61	11,744.0	-1,181.5	-3,501.1	3,650.2	0.00	0.00	Driller's TD @ 12784.5' MD
12,800.0	0.31	239.61	11,759.5	-1,181.5	-3,501.2	3,650.3	0.00	0.00	
12,900.0	0.31	239.61	11,859.5	-1,181.8	-3,501.7	3,650.8	0.00	0.00	
13,000.0	0.31	239.61	11,959.5	-1,182.1	-3,502.1	3,651.4	0.00	0.00	
13,034.5	0.31	239.61	11,994.0	-1,182.2	-3,502.3	3,651.5	0.00	0.00	

Cathedral Energy Services

Planning Report

Database:	EDM 5000.1 US Multi Users DB	Local Co-ordinate Reference:	Site S28-T4S-R96W (P28 496)(column pattern)
Company:	EnCana Oil & Gas (USA) Inc	TVD Reference:	WELL @ 7804.0ft (Original Well Elev)
Project:	Double Willow	MD Reference:	WELL @ 7804.0ft (Original Well Elev)
Site:	S28-T4S-R96W (P28 496)(column pattern)	North Reference:	True
Well:	DW 8603B-33 (P28 496)	Survey Calculation Method:	Minimum Curvature
Wellbore:	DD		
Design:	Plan #1		

Targets									
Target Name									
- hit/miss target	Dip Angle	Dip Dir.	TVD	+N/-S	+E/-W	Northing	Easting	Latitude	Longitude
- Shape	(°)	(°)	(ft)	(ft)	(ft)	(ft)	(ft)		
DW 8603B-33 P28 496 I	0.00	0.00	10,494.0	-1,178.1	-3,495.3	1,678,168.27	2,246,159.19	39° 39' 53.48 N	108° 10' 41.24 W
- plan hits target center									
- Rectangle (sides W30.0 H50.0 D0.0)									
DW 8603B-33 P28 496 ^	0.00	0.00	6,834.0	-1,168.1	-3,478.3	1,678,177.76	2,246,176.51	39° 39' 53.58 N	108° 10' 41.03 W
- plan hits target center									
- Point									

Formations						
Measured Depth	Vertical Depth	Name	Lithology	Dip	Dip Direction	
(ft)	(ft)			(°)	(°)	
94.0	94.0	Mahog Bench (TVD)				
154.0	154.0	Base B Groove (TVD)				
4,240.5	3,694.0	Was G (TVD)				
7,834.4	6,794.0	WF (TVD)				
7,874.4	6,834.0	TOG (TVD)				
11,534.5	10,494.0	Rlms (TVD)				
11,864.5	10,824.0	Cozz (TVD)				
12,054.5	11,014.0	Corc (TVD)				
12,334.5	11,294.0	Sego (TVD)				
12,534.5	11,494.0	L Sego (TVD)				

Plan Annotations				
Measured Depth	Vertical Depth	Local Coordinates		Comment
(ft)	(ft)	+N/-S (ft)	+E/-W (ft)	
300.0	300.0	-120.0	-8.7	KOP @ 300' MD
1,434.8	1,369.2	-214.6	-322.0	EOB; Inc=34.04°
6,739.6	5,764.8	-1,073.4	-3,164.9	Start Drop -3.00
7,874.4	6,834.0	-1,168.1	-3,478.3	EOD; Inc=0°
12,784.5	11,744.0	-1,181.5	-3,501.1	Driller's TD @ 12784.5' MD
13,034.5	11,994.0	-1,182.2	-3,502.3	Permit TD @ 13034.5' MD